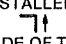
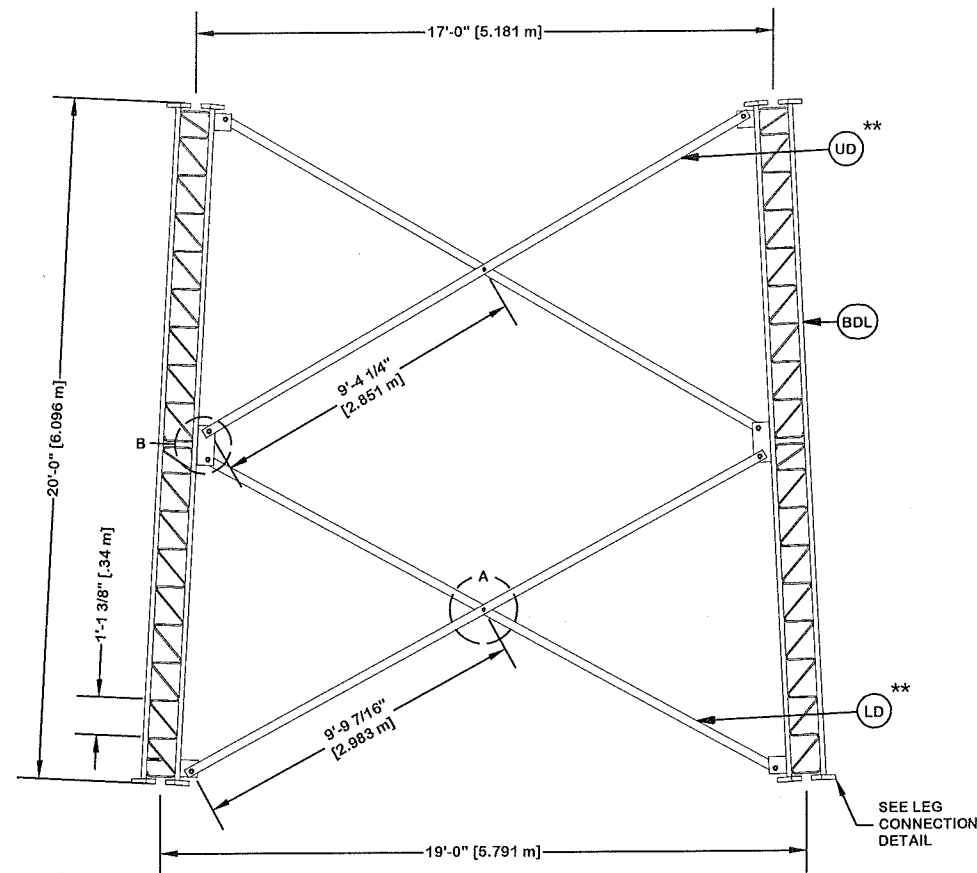


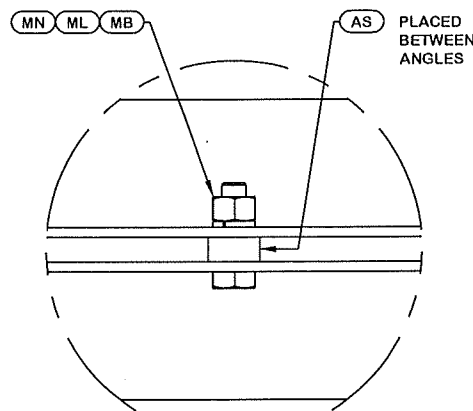
ORIENT LEGS WITH P/N STAMP
TOWARD BOTTOM OF SECTION

ORIENT ANGLES WITH STAMPED
END TOWARD TOP OF SECTION

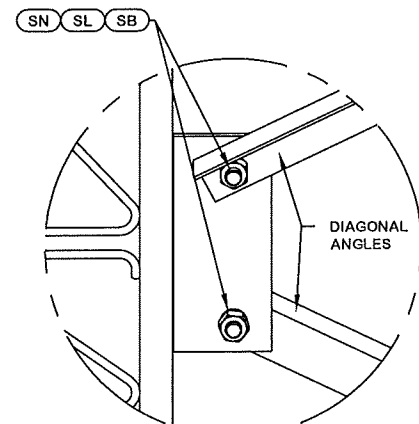
** DIAGONAL ANGLES MUST BE INSTALLED
WITH THE NON-BOLTED FACE UP, 
THIS MAY BE ON THE OPPOSITE SIDE OF THE
SIDE PLATE THAN WHAT IS SHOWN IN THE DETAIL.



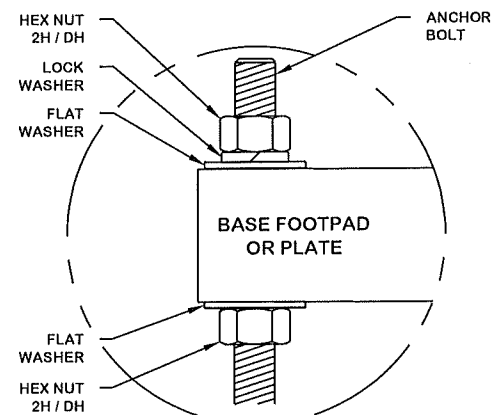
PARTS LIST					
ITEM	QTY	PART NO.	PART DESCRIPTION	UNIT WT.	NET WT.
BDL	3	195217	#12 LEG SECTION - 1-3/4" LEG - 1/2" BRACE - 1" BOL	746.710	2240.130
LD	6	198340	DIAG BRACE 5/16" X 3" X 3" 19' 4 1/64" LONG (A36)	128.000	768.000
AS	6	104291	SPACER 1/2" THICK 13/16" HOLE	0.500	3.000
MN	6	312502	3/4"-10 HOT DIPPED GALVANIZED NUT	0.190	1.140
ML	6	312153	3/4" GALVANIZED LOCKWASHER	0.030	0.180
MB	6	160427	3/4"-10 X 3" A-325T BOLT WITH FULL THREAD	0.470	2.820
SL	24	312223	1" GALVANIZED LOCKWASHER	0.080	1.920
SN	24	312504	1"-8 HOT DIPPED GALVANIZED NUT	0.430	10.320
SB	24	172265	1"-8 X 2-1/4" A-325 BOLT WITH 1-3/4" THREAD	0.840	20.160
UD	6	127612	DIAG BRACE 5/16" X 3" X 3" 18'-6-3/16" LONG (A-3)	118.590	711.540
Total Wt				3759.21 lb [1706.71 kg]	



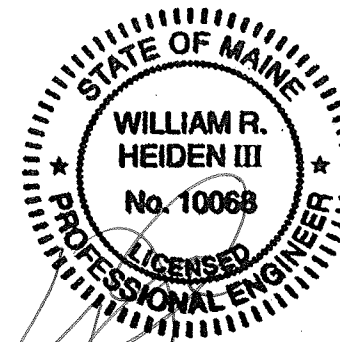
DETAIL A
ANGLE INTERSECTION CONNECTION



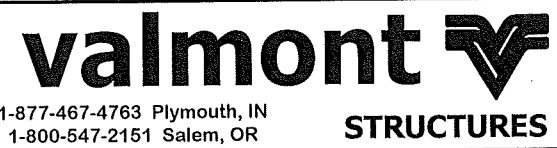
DETAIL B
MID SIDE PLATE ANGLE CONNECTION



ANCHOR BOLT ASSY. (TYP)
SEE FOUNDATION DRAWING FOR DETAILS



William R. Heiden III, ME P.E. #10068

@A <ACBATCH>		SKK 8/10/2016		SITE CITY OF PORTLAND FD, ME MOTOROLA SOLUTIONS U 19 X 180'		DESCRIPTION SECTION U-19.0 (0' - 20' ELEVATION)			
PROPRIETARY NOTE: THE DATA AND TECHNIQUES CONTAINED IN THIS DRAWING ARE PROPRIETARY INFORMATION OF VALMONT INDUSTRIES AND CONSIDERED A TRADE SECRET. ANY USE OR DISCLOSURE WITHOUT THE CONSENT OF VALMONT INDUSTRIES IS STRICTLY PROHIBITED.		STRUCTURE APPROVAL SKK 8/10/2016		FOUNDATION APPROVAL		ENG. FILE NO. 324370		DWG. NO. 268614T	
COPYRIGHT 2013		REVISION HISTORY		REV DESCRIPTION OF REVISIONS CPD BY DATE		1-877-467-4763 Plymouth, IN 1-800-547-2151 Salem, OR		3 OF 11 PAGE	