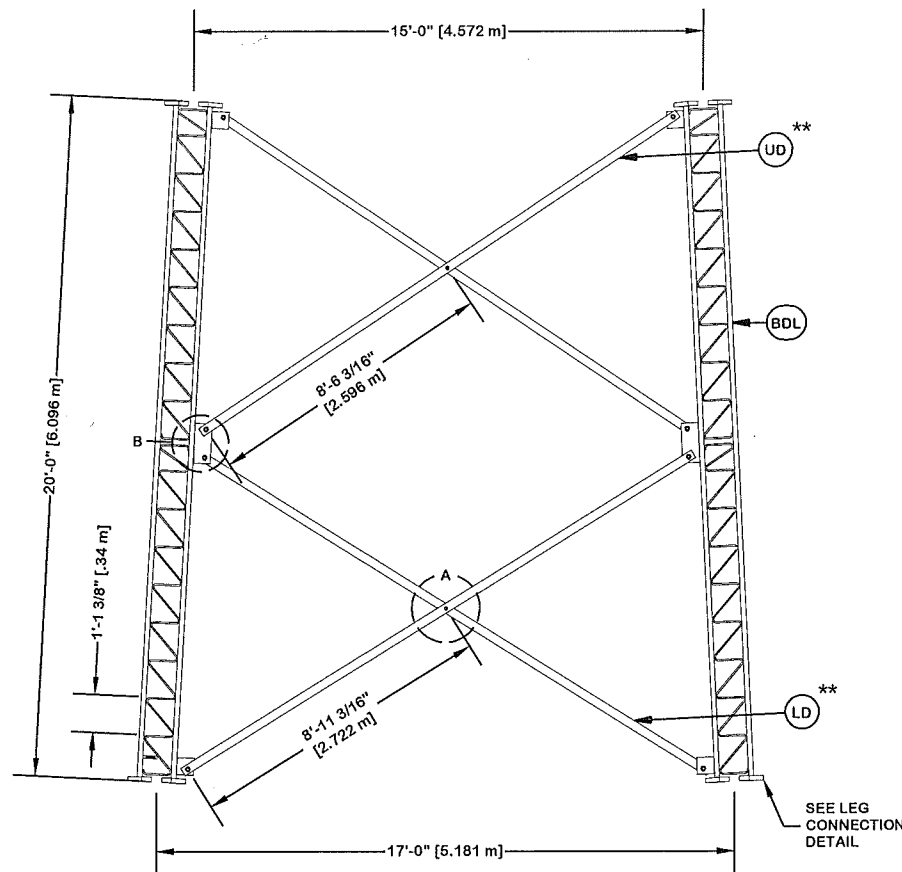


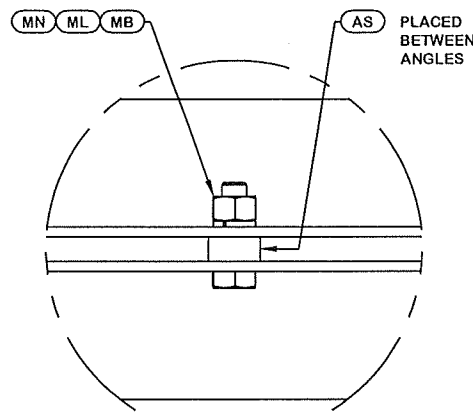
ORIENT LEGS WITH P/N STAMP
TOWARD BOTTOM OF SECTION

ORIENT ANGLES WITH STAMPED
END TOWARD TOP OF SECTION

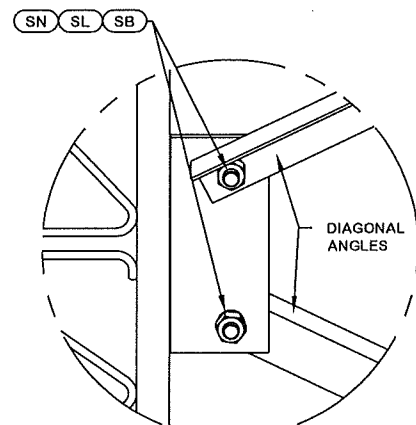
** DIAGONAL ANGLES MUST BE INSTALLED
WITH THE NON-BOLTED FACE UP,
THIS MAY BE ON THE OPPOSITE SIDE OF THE
SIDE PLATE THAN WHAT IS SHOWN IN THE DETAIL.



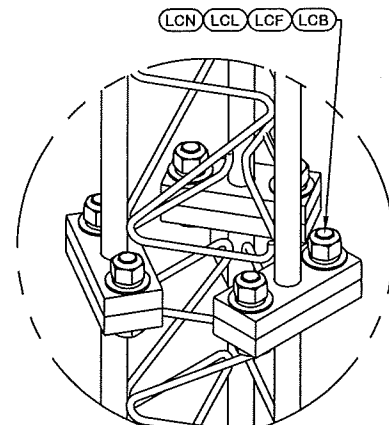
PARTS LIST					
ITEM	QTY	PART NO.	PART DESCRIPTION	UNIT WT.	NET WT.
BDL	3	195213	#12 LEG SECT - 1-3/4" TO 1-1/2" TRANS LEG - 1/2" B	739.890	2219.670
LD	6	127611	DIAG BRACE 5/16" X 3" X 3" 17'- 7-29/32" LONG (A)	113.100	678.600
AS	6	104291	SPACER 1/2" THICK 13/16" HOLE	0.500	3.000
MN	6	312502	3/4"-10 HOT DIPPED GALVANIZED NUT	0.190	1.140
ML	6	312153	3/4" GALVANIZED LOCKWASHER	0.030	0.180
MB	6	160427	3/4"-10 X 3" A-325T BOLT WITH FULL THREAD	0.470	2.820
SL	24	312223	1" GALVANIZED LOCKWASHER	0.080	1.920
SN	24	312504	1"-8 HOT DIPPED GALVANIZED NUT	0.430	10.320
SB	24	172265	1"-8 X 2-1/4" A-325 BOLT WITH 1-3/4" THREAD	0.840	20.160
UD	6	105588	DIAG BRACE 5/16" X 3" X 3" 16'- 9-27/32" LONG (A-)	107.730	646.380
LCB	18	222022	1-1/4"-7 X 5-1/2" A-325 BOLT WITH 2" THREAD	2.530	45.540
LCF	36	312282	1-1/4" GALVANIZED FLAT WASHER (F436)	0.130	4.680
LCL	18	312283	1-1/4" GALVANIZED LOCKWASHER	0.150	2.700
LCN	18	312507	1-1/4"-7 HOT DIPPED GALVANIZED NUT	0.730	13.140
Total Wt				3650.25 lb [1657.25 kg]	



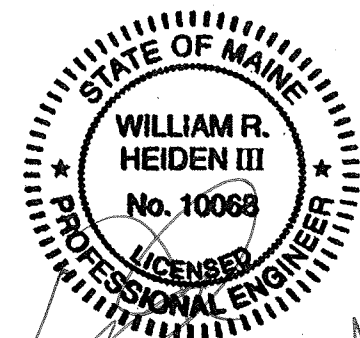
DETAIL A
ANGLE INTERSECTION CONNECTION



DETAIL B
MID SIDE PLATE ANGLE CONNECTION



LEG TO LEG CONNECTION
(SIDE PLATES NOT SHOWN FOR CLARITY)



NOV 15 2016
William R. Heiden III, ME P.E. #10068

REV	DESCRIPTION OF REVISIONS	CPD	BY	DATE
@A	<ACBATCH>		SKK	8/10/2016
REVISION HISTORY				

SITE	CITY OF PORTLAND FD, ME MOTOROLA SOLUTIONS U 19 X 180'
COPYRIGHT 2013	PROPRIETARY NOTE: THE DATA AND TECHNIQUES CONTAINED IN THIS DRAWING ARE PROPRIETARY INFORMATION OF VALMONT INDUSTRIES AND CONSIDERED A TRADE SECRET. ANY USE OR DISCLOSURE WITHOUT THE CONSENT OF VALMONT INDUSTRIES IS STRICTLY PROHIBITED.

DESCRIPTION	SECTION U-17.0 (20' - 40' ELEVATION)
STRUCTURE APPROVAL	SKK 8/10/2016
FOUNDATION APPROVAL	

valmont STRUCTURES	
1-877-467-4763 Plymouth, IN 1-800-547-2151 Salem, OR	
ENG. FILE NO.	324370
DWG. NO.	268614T