

(A)

Proposed Walk-in Cooler
Program/Specs

Barr Inc.

1423 Planeview Drive

Oshkosh, WI 54904

920-231-1711 Phone

20' x 40' x 12'-4"
Drive-In Cooler

DRAWING INDEX

- T.1 TITLE SHEET
- A100 FLOOR/CEILING PLAN
- A200 INSULATED WALL PANEL ELEVATIONS
- A300 INSULATED WALL PANEL DETAILS

TOLERANCES UNLESS SPECIFIED: FINISHES: AS SHOWN ANGLES: 90° DIMENSIONS: AS SHOWN DECIMALS: .001 FRACTIONS: 1/8", 1/4", 3/8", 1/2" TOLERANCES: ±.005 TOLERANCES: ±.005		DRAWING NO. _____ DATE: 8/25/2018 SCALE: NTS CHECKED BY: _____ SHEET NO. T.1
TITLE: 20' X 40' X 12'-4" Drive-In Cooler		Barr Inc. 1423 Planeview Drive Oshkosh, WI 54904 920-231-1711 Phone
REVISIONS NO. _____ BY _____ DATE _____		DRAWN BY: _____ DATE: _____

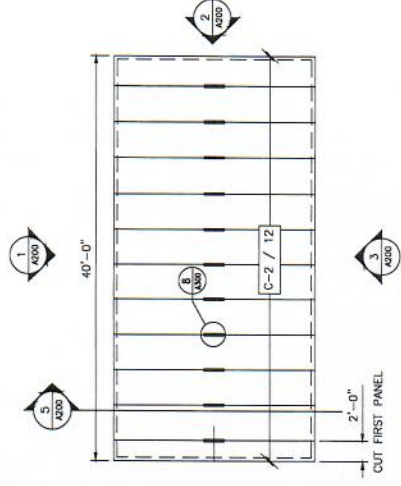
Barr Inc.
1423 Planerew Drive
Oshkosh, WI 54904
920-231-1711 Phone

20' x 40' x 12'-4"
Dry-e-in Cooler

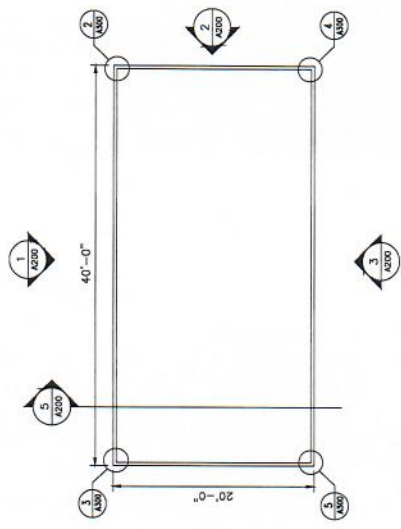
TOLERANCES UNLESS SPECIFIED
FRACTIONS DECIMAL
MILL. INCH.
XX' ± 1/2" XX' ± 0.03125'
XXX' ± 0.0625' XXX' ± 0.03125'
XXXX' ± 0.015625' XXX' ± 0.03125'

FLOOR PLAN

DATE: 8/20/2014
SCALE: NTS
SHEET NO.:
PROJECT NO.:



2
1/16" SCALE: N.T.S.
CEILING PLAN



1
1/16" SCALE: N.T.S.
FLOOR PLAN

PANEL SCHEDULE

PANEL DESIG.	PANEL HEIGHT	QTY. OF PANELS	PANEL THICK	PANEL SERIES	PANEL COLOR
W-1	12'-0"	36	4"	MESSLINE	USDA WHITE
C-2	20'-0"	12	4"	MESSLINE	USDA WHITE

BY	DATE	REVISION

00234

DATE: 8/20/2018

SCALE: N/A

DRY: REZ

WALL ELEVATIONS

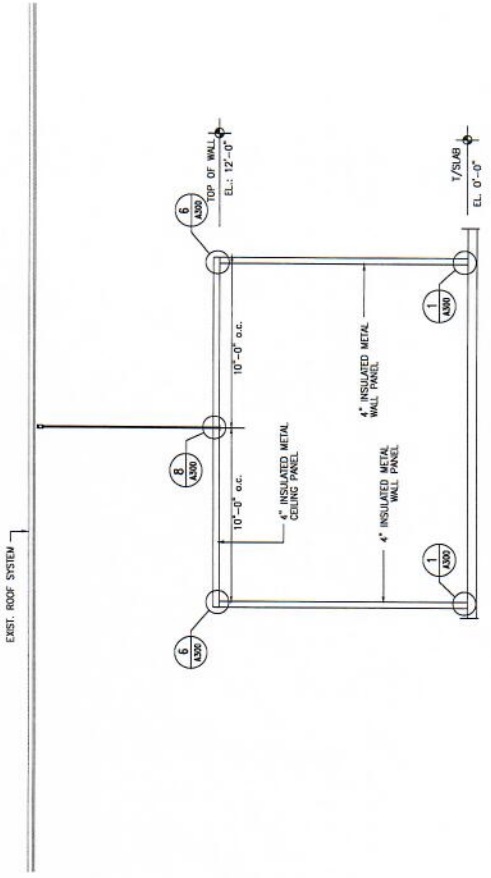
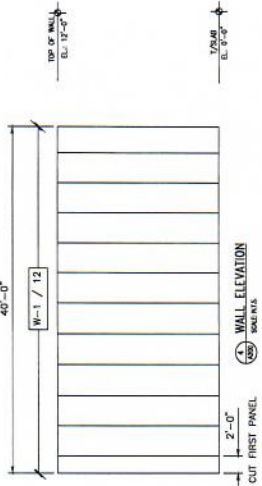
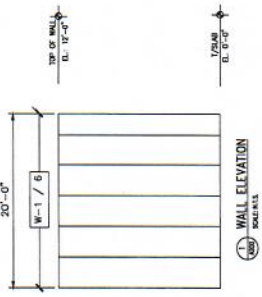
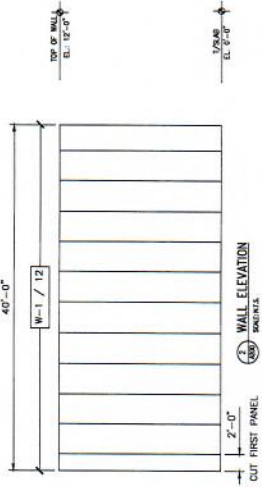
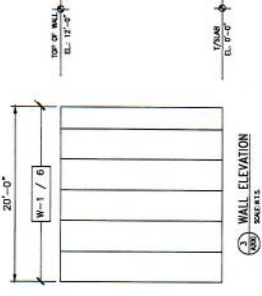
TOLEANCES UNLESS SPECIFIED
 FINISHES UNLESS SPECIFIED
 MATERIALS UNLESS SPECIFIED
 CONTRACTOR TO VERIFY ALL DIMENSIONS
 AND MATERIALS WITH THE ARCHITECT

20' X 40' X 12'-4"

Drive-In Cooler

Barr Inc.
 1423 Planview Drive
 Oshkosh, WI 54904
 920-231-1711 Phone

NO.	DATE	REVISION



PANEL SCHEDULE

PANEL DESIG.	PANEL HEIGHT	QTY OF PANELS	PANEL THICK	PANEL SERIES	PANEL COLOR
W-1	12'-0"	36	4"	USA	WHITE
C-2	20'-0"	12	4"	USA	WHITE



20' x 40' x 12'4"H Walk-In Cooler

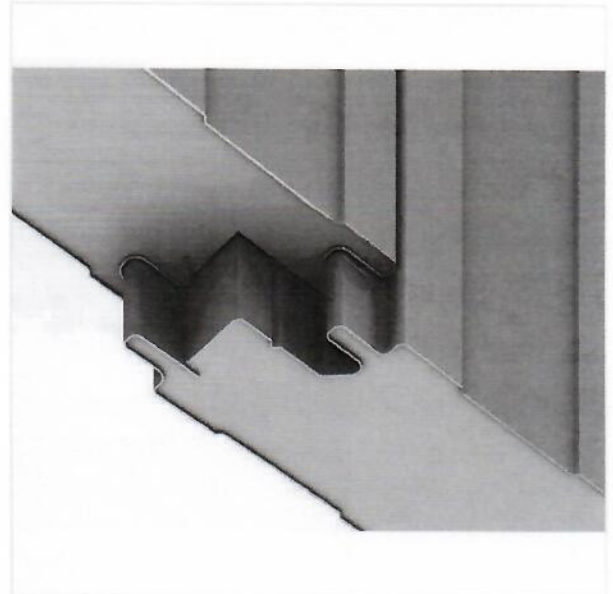
Size: 800 Sq. Ft.
Condition: New



FEATURES:

In stock, ready to ship!

- Modular, tongue & groove cold storage panels with 4" thick non-CFC foamed-in-place polyisocyanurate foam insulation.
- Stucco white interior/exterior finish.
- USDA & FM Approved.
- Unit includes (1) 8' x 8' manual sliding door.
- Install trim package for panels included (base angle, corner trim, caulking, screws, vinyl strip curtain for door, vapor barrier, ceiling suspension kit(s) etc).
- Refrigeration sized for holding conditions (no warm product entering etc).



SPECIFICATIONS:

Voltage/Phase: 230 Volt, 3 Phase.

Dimensions: 20' x 40' x 12'4"H

Finish: Stucco White

Model Details: (1) New 5 HP medium temp refrigeration system with

EC evaporator motors:

+35 to +45 degree storage.

230 Volt, 3 Phase.

Warranty: Refrigeration equipment includes 1 year factory + 4

year extended on compressor.

© 2008 - 2016 Barr, Inc.



20' x 40' x 12'4"H Walk-In Cooler

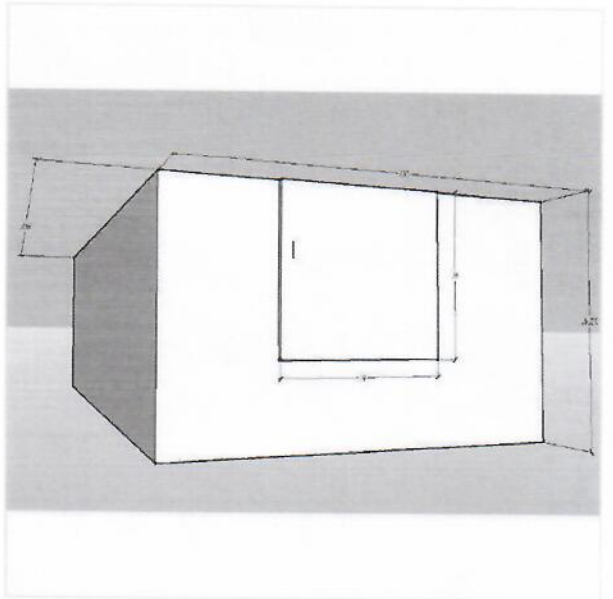
Size: 800 Sq. Ft.
Condition: New



FEATURES:

In stock, ready to ship!

- Modular, tongue & groove cold storage panels with 4" thick non-CFC foamed-in-place polyisocyanurate foam insulation.
- Stucco white interior/exterior finish.
- USDA & FM Approved.
- Unit includes (1) 8' x 8' manual sliding door.
- Install trim package for panels included (base angle, corner trim, caulking, screws, vinyl strip curtain for door, vapor barrier, ceiling suspension kit(s) etc).
- Refrigeration sized for holding conditions (no warm product entering etc).



SPECIFICATIONS:

Voltage/Phase: 230 Volt, 3 Phase.

Dimensions: 20' x 40' x 12'4"H

Finish: Stucco White

Model Details: (1) New 5 HP medium temp refrigeration system with EC evaporator motors:

+35 to +45 degree storage.

230 Volt, 3 Phase.

Warranty: Refrigeration equipment includes 1 year factory + 4

year extended on compressor.

© 2008 - 2016 Barr, Inc.