

321-A-2

522-522 Riverside

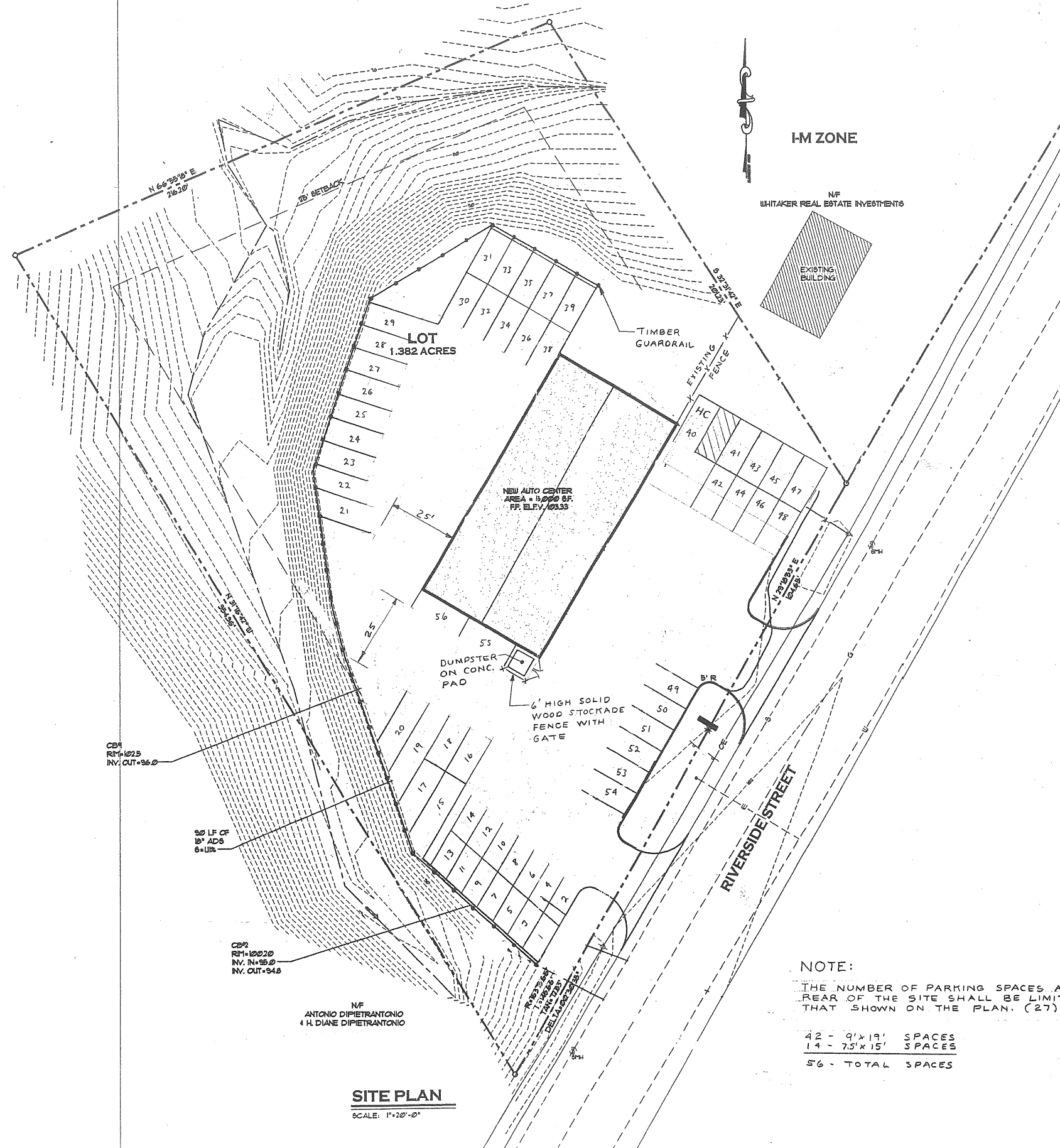
Bernie's Auto Repair

Roy Clark.





**NOTE**  
 1. FOR GENERAL NOTES AND LEGEND, SEE DRAWING CL

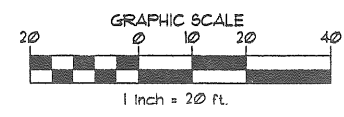
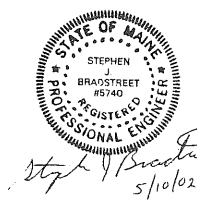


**SITE PLAN**  
 SCALE: 1"=20'-0"

**NOTE:**  
 THE NUMBER OF PARKING SPACES AT THE REAR OF THE SITE SHALL BE LIMITED TO THAT SHOWN ON THE PLAN. (27)

42 - 9'x19' SPACES  
 14 - 7.5'x15' SPACES  
 56 - TOTAL SPACES

I, STEPHEN J. BRADSTREET, SEAL THIS PLAN AS IT RELATES ONLY TO THE CITY'S 1/31/2002 LETTER REGARDING PARKING SPACES, GUARDRAIL AND DUMPSTER. THE ORIGINAL PLAN PREPARED BY ASSOCIATED DESIGN PARTNERS INC. WAS USED ONLY AS A BASE.



**ASSOCIATED DESIGN PARTNERS INC.**  
 80 Leighton Road  
 Falmouth, Maine 04105  
 Office: (207) 875-1751  
 Fax: (207) 875-1788  
 E-Mail: [tdb@adpartners.com](mailto:tdb@adpartners.com)

THIS DRAWING, DESIGN AND ELECTRONIC FILE ARE THE PROPERTY OF ASSOCIATED DESIGN PARTNERS, INC. THE REPRODUCTION, COPYING OR ANY OTHER USE OF THIS DOCUMENT WITHOUT WRITTEN CONSENT IS PROHIBITED.

PROJECT: **BERNIE'S AUTO CENTER**  
 522 RIVERSIDE STREET  
 PORTLAND, MAINE

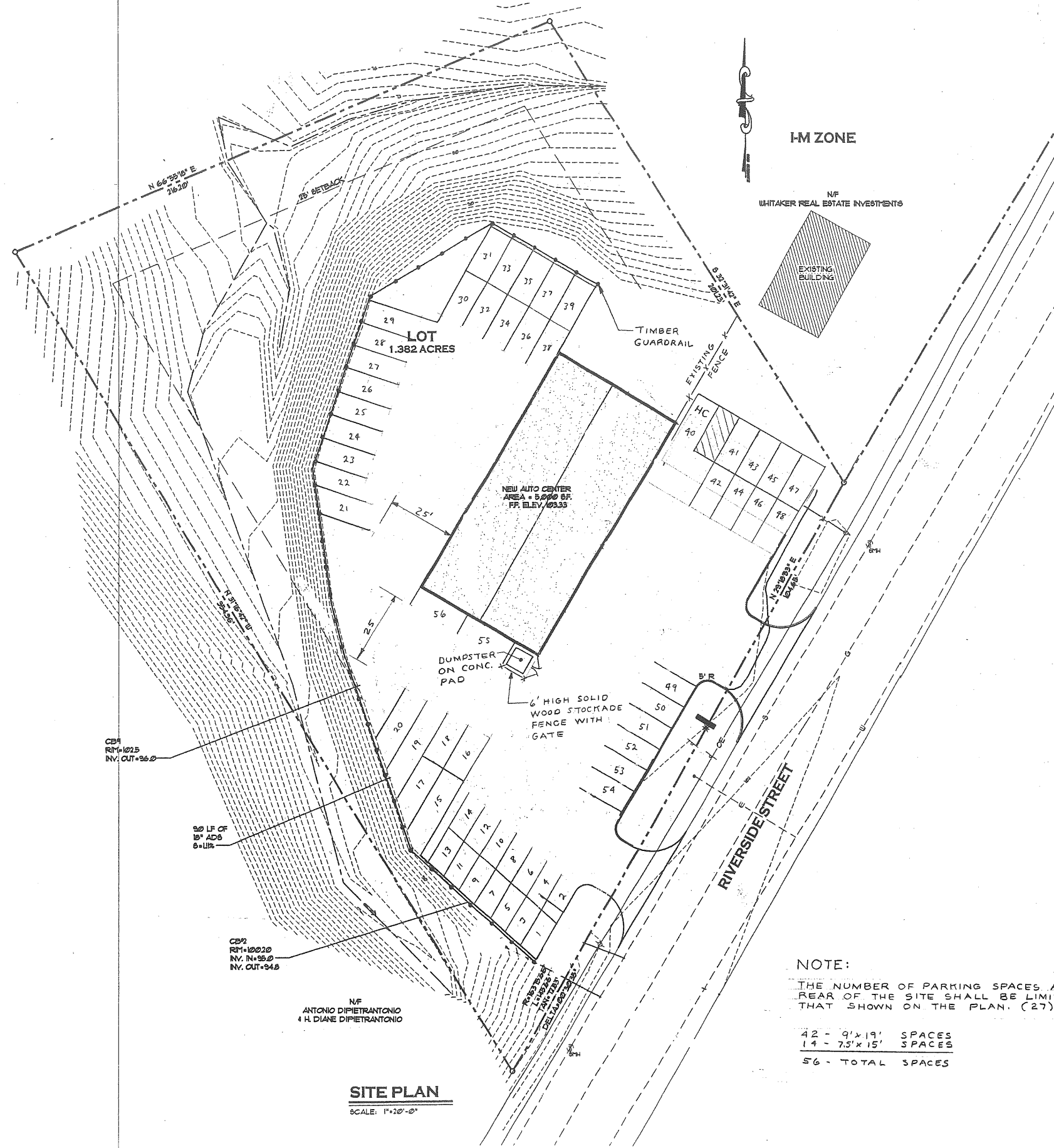
SHEET TITLE: **GRADING, DRAINAGE AND EROSION CONTROL PLAN**

NO.	REVISIONS DESCRIPTION	DATE

DATE: 11-30-99  
 SCALE: AS NOTED  
 DESIGN BY: E. DUEE  
 DRAWN BY: E. DUEE  
 FILE No. 99186.C1.DWG  
 PROJECT NUMBER: **99186**  
 SHEET: OF

**NOTE**

1. FOR GENERAL NOTES AND LEGEND, SEE DRAWING C1.



I-M ZONE

NF WHITAKER REAL ESTATE INVESTMENTS

EXISTING BUILDING

TIMBER GUARDRAIL

EXISTING FENCE

NEW AUTO CENTER AREA = 5,000 SF. FF. ELEV. 103.33

DUMPSTER ON CONC. PAD

6' HIGH SOLID WOOD STOCKADE FENCE WITH GATE

RIVERSIDE STREET

NF ANTONIO DIPIETRANTONIO & H. DIANE DIPIETRANTONIO

**SITE PLAN**

SCALE: 1" = 20' - 0"

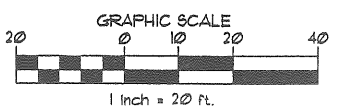
**NOTE:**

THE NUMBER OF PARKING SPACES AT THE REAR OF THE SITE SHALL BE LIMITED TO THAT SHOWN ON THE PLAN. (27)

- 42 - 9' x 19' SPACES
- 14 - 7.5' x 15' SPACES
- 56 - TOTAL SPACES



*Stephen J. Bradstreet*  
5/10/02



**ASSOCIATED DESIGN PARTNERS INC.**  
Office: (207) 878-1751  
Fax: (207) 878-1788  
E-Mail: [lbs@lepanel.com](mailto:lbs@lepanel.com)  
80 Leighton Road  
Falmouth, Maine 04105

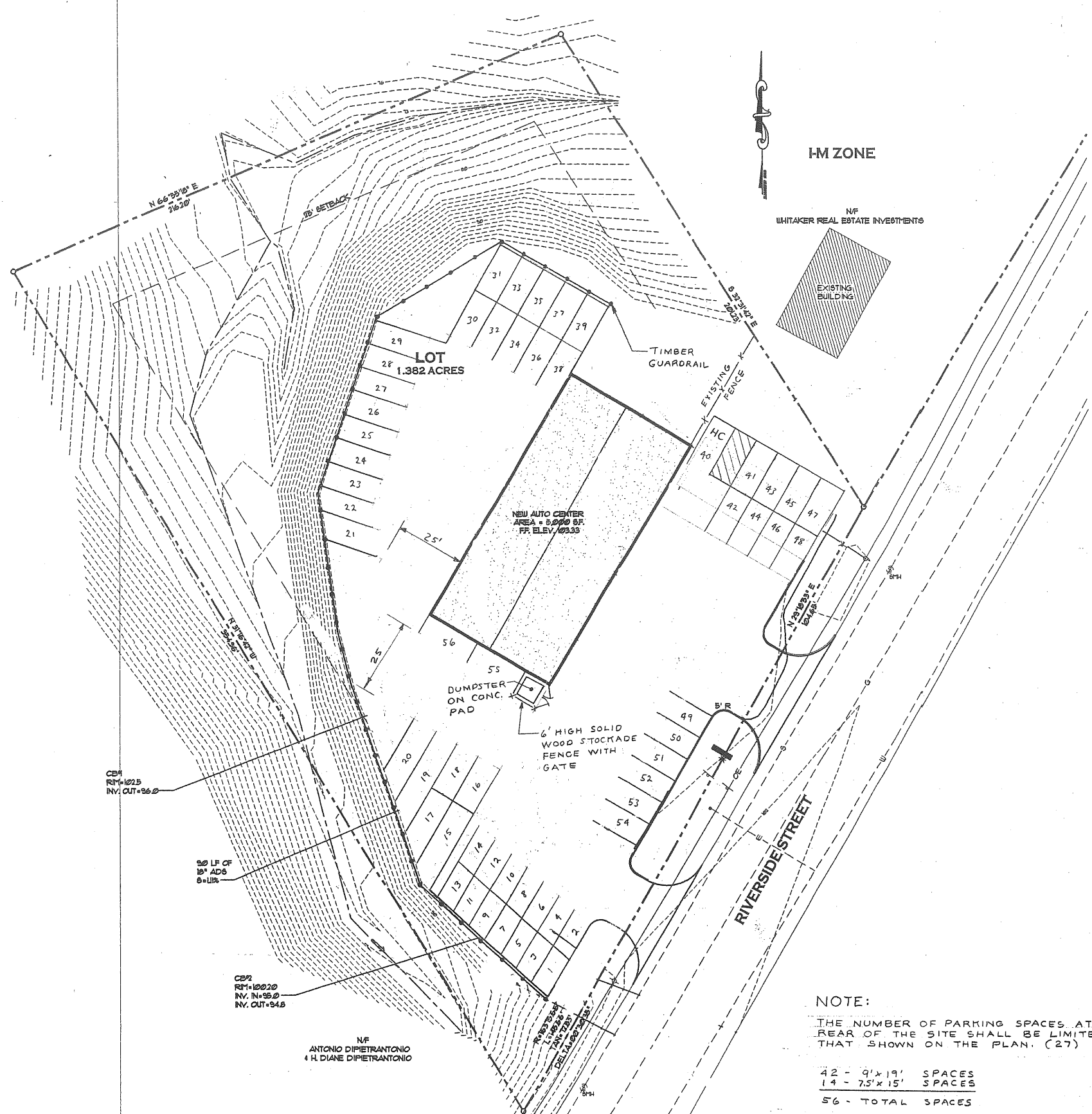
THIS DRAWING, DESIGN AND ELECTRONIC FILE ARE THE PROPERTY OF ASSOCIATED DESIGN PARTNERS, INC. THE REPRODUCTION, COPYING OR ANY OTHER USE OF THIS DOCUMENT WITHOUT WRITTEN CONSENT IS PROHIBITED.

PROJECT: **BERNIE'S AUTO CENTER**  
522 RIVERSIDE STREET  
PORTLAND, MAINE  
SHEET TITLE: **GRADING, DRAINAGE AND EROSION CONTROL PLAN**

REVISIONS	DESCRIPTION	DATE

DATE:	11-30-99
SCALE:	AS NOTED
DESIGN BY:	E. DUBE
DRAWN BY:	E. DUBE
FILE No.:	99186C1.DWG
PROJECT NUMBER:	<b>99186</b>
SHEET:	OF

**NOTE**  
1. FOR GENERAL NOTES AND LEGEND, SEE DRAWING CL



IM ZONE

NF WHITAKER REAL ESTATE INVESTMENTS

LOT 1.382 ACRES

NEW AUTO CENTER  
AREA = 9,990 SF  
FF. ELEV. 103.33

DUMPSTER ON CONC. PAD  
6' HIGH SOLID WOOD STOCKRADE FENCE WITH GATE

RIVERSIDE STREET

NF ANTONIO DIPIETRANTONIO  
4 H. DIANE DIPIETRANTONIO

**SITE PLAN**  
SCALE: 1"=20'-0"

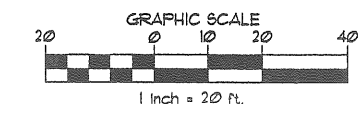
**NOTE:**  
THE NUMBER OF PARKING SPACES AT THE REAR OF THE SITE SHALL BE LIMITED TO THAT SHOWN ON THE PLAN. (27)

42 - 9' x 19' SPACES  
14 - 7.5' x 15' SPACES  
56 - TOTAL SPACES

I, STEPHEN J. BRADSTREET, SEAL THIS PLAN AS IT RELATES ONLY TO THE CITY'S 1/31/2002 LETTER REGARDING PARKING SPACES, GUADRRAIL AND DUMPSTER. THE ORIGINAL PLAN PREPARED BY ASSOCIATED DESIGN PARTNERS INC. WAS USED ONLY AS A BASE.



*Stephen J. Bradstreet*  
5/10/02



**ASSOCIATED DESIGN PARTNERS INC.**  
801 Jackson Road  
Falmouth, Maine 04105  
Office: (207) 875-1751  
Fax: (207) 875-1788  
E-Mail: tbs@adpartners.com

THIS DRAWING, DESIGN AND ELECTRONIC FILE ARE THE PROPERTY OF ASSOCIATED DESIGN PARTNERS, INC. THE REPRODUCTION, COPYING OR ANY OTHER USE OF THIS DOCUMENT WITHOUT WRITTEN CONSENT IS PROHIBITED.

PROJECT: **BERNIE'S AUTO CENTER**  
522 RIVERSIDE STREET  
PORTLAND, MAINE

SHEET TITLE: **GRADING, DRAINAGE AND EROSION CONTROL PLAN**

NO.	REVISIONS DESCRIPTION	DATE

DATE: 11-30-99  
SCALE: AS NOTED  
DESIGN BY: E. DUEE  
DRAWN BY: E. DUEE  
FILE No. 99186.C1.DVC  
PROJECT NUMBER: **99186**  
SHEET: OF

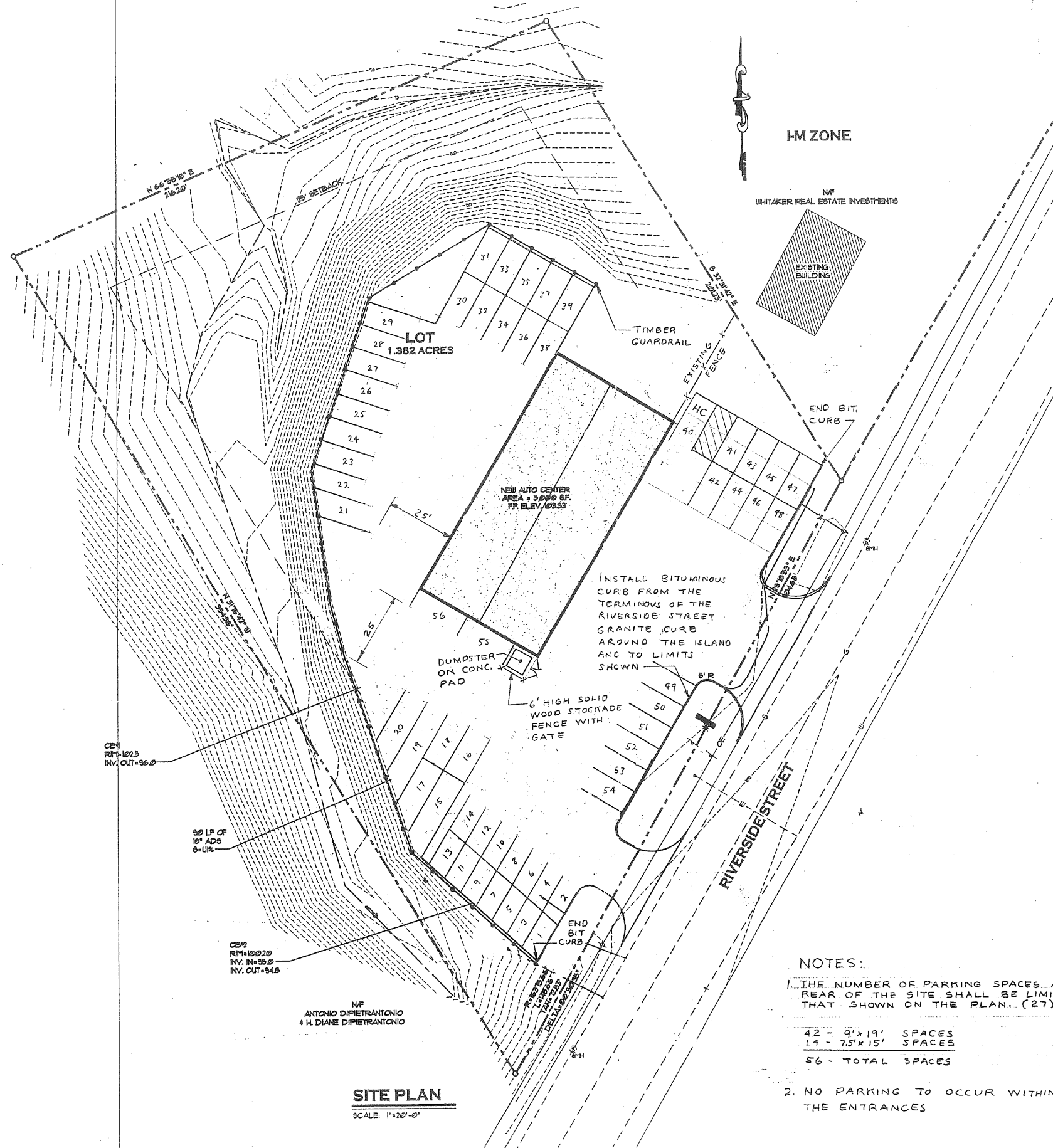






**NOTE**

1. FOR GENERAL NOTES AND LEGEND, SEE DRAWING C1



**SITE PLAN**  
SCALE: 1"=20'-0"

IM ZONE

NF WHITAKER REAL ESTATE INVESTMENTS

END BIT CURB

INSTALL BITUMINOUS CURB FROM THE TERMINUS OF THE RIVERSIDE STREET GRANITE CURB AROUND THE ISLAND AND TO LIMITS SHOWN

6" HIGH SOLID WOOD STOCKADE FENCE WITH GATE

DUMPSTER ON CONC. PAD

END BIT CURB

RIVERSIDE STREET

NF ANTONIO DIPIETRANTONIO & H. DIANE DIPIETRANTONIO

**NOTES:**

1. THE NUMBER OF PARKING SPACES AT THE REAR OF THE SITE SHALL BE LIMITED TO THAT SHOWN ON THE PLAN. (27)

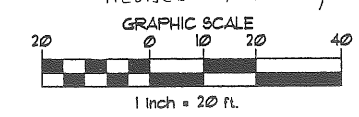
42 - 9' x 19' SPACES  
14 - 7.5' x 15' SPACES  
56 - TOTAL SPACES

2. NO PARKING TO OCCUR WITHIN THE ENTRANCES

I, STEPHEN J. BRADSTREET, SEAL  
THIS PLAN AS IT RELATES ONLY TO THE CITY'S 1/31/2002 LETTER REGARDING PARKING SPACES, GUARDRAIL AND DUMPSTER. THE ORIGINAL PLAN PREPARED BY ASSOCIATED DESIGN PARTNERS INC. WAS USED ONLY AS A BASE.



*Step J Bradstreet*  
5/10/02  
Revised 5/24/02 JJB



**ASSOCIATED DESIGN PARTNERS INC.**  
60 Leighton Road  
Portland, Maine 04105  
Phone: (207) 878-1781  
Fax: (207) 878-1786  
E-Mail: [ads@jvpartners.com](mailto:ads@jvpartners.com)

THIS DRAWING DESIGN AND ELECTRONIC FILE ARE THE PROPERTY OF ASSOCIATED DESIGN PARTNERS, INC. THE REPRODUCTION, COPYING OR ANY OTHER USE OF THIS DOCUMENT WITHOUT WRITTEN CONSENT IS PROHIBITED.

PROJECT: **BERNIE'S AUTO CENTER**  
522 RIVERSIDE STREET  
PORTLAND, MAINE  
SHEET TITLE: **GRADING, DRAINAGE AND EROSION CONTROL PLAN**

NO.	REVISIONS DESCRIPTION	DATE

DATE: 11-30-99  
SCALE: AS NOTED  
DESIGN BY: E. DUSE  
DRAWN BY: E. DUSE  
FILE No. 99186CLDVG  
PROJECT NUMBER: **99186**  
SHEET OF **C2 4**





