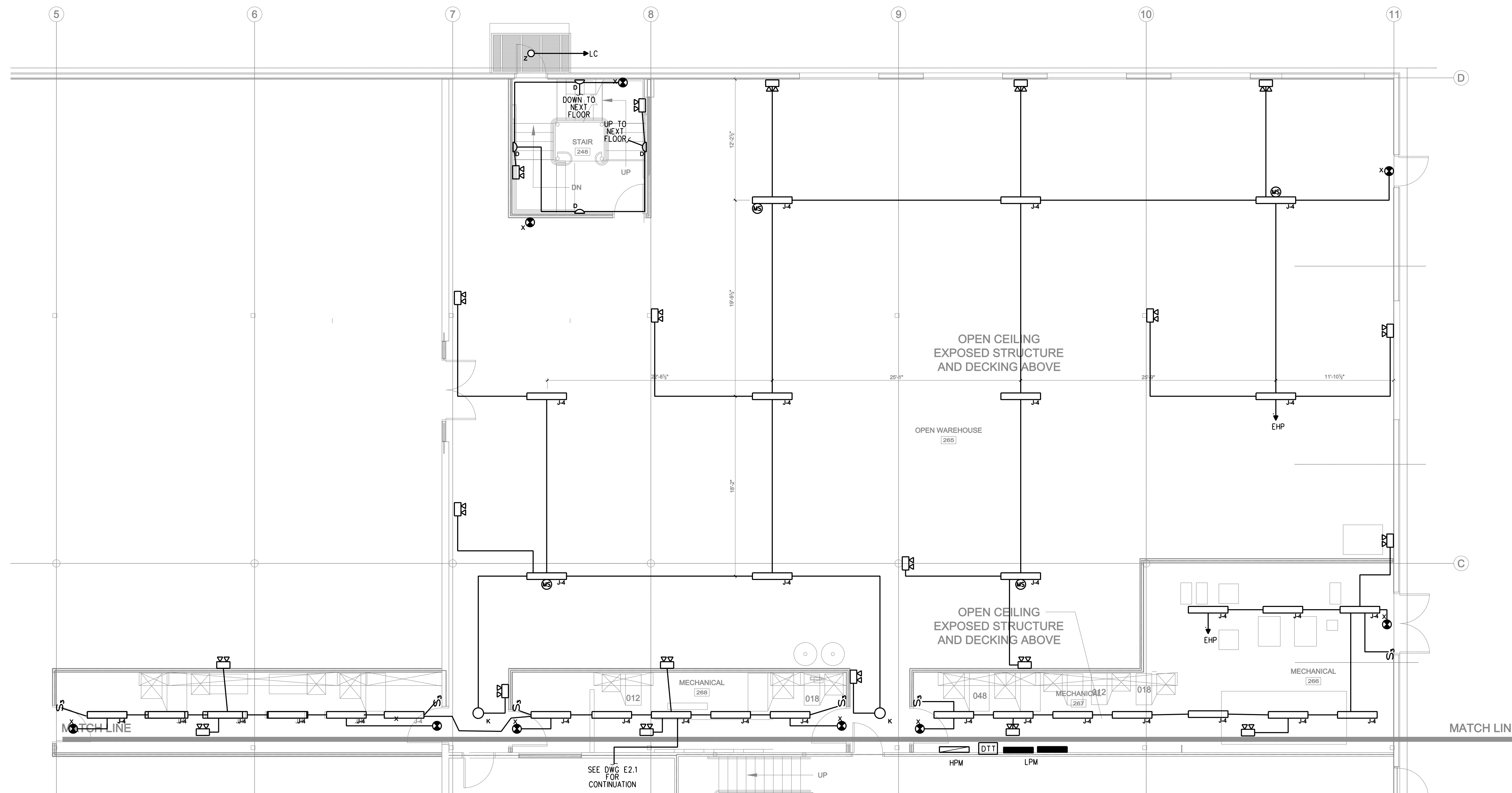


SITE ELECTRICAL PLAN
SCALE: 1" = 20'-0"



FIRST FLOOR PLAN - PART A LIGHTING
SCALE: 3/16"=1'-0"

NOTE: PRIOR TO STARTING WORK EC TO VERIFY LIGHTING LOCATIONS WITH ARCHITECTURAL PLANS.

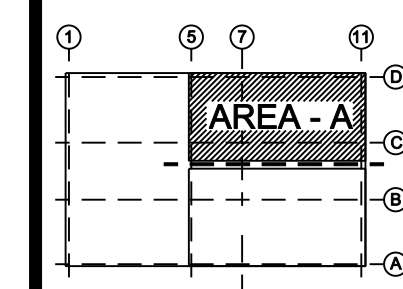
EnviroLogix
RIVERSIDE CAMPUS
530 - DNA EXPANSION
PORTLAND, MAINE

TFH ARCHITECTS
80 MIDDLE STREET
PORTLAND MAINE 04101
TELEPHONE 207 775 6141
ARCHITECTURE PLANNING

CONSULTANTS:
STRUCTURAL:
Sovtek Structural Engineers, Inc.
75 York Street
Portland, ME 04101-4450
207-775-1800
MECHANICAL:
Integrated Energy Systems, LLC
210 Middle Road
Falmouth, ME 04105
207-781-4200
ELECTRICAL:
Bennett Engineering
7 Bennett Road
Portland, ME 04102
207-865-9475

530 RIVERSIDE KEY PLAN

REVISIONS:



DATE: 8/31/11

PROJECT No. 1026A

DRAWN BY: TWG

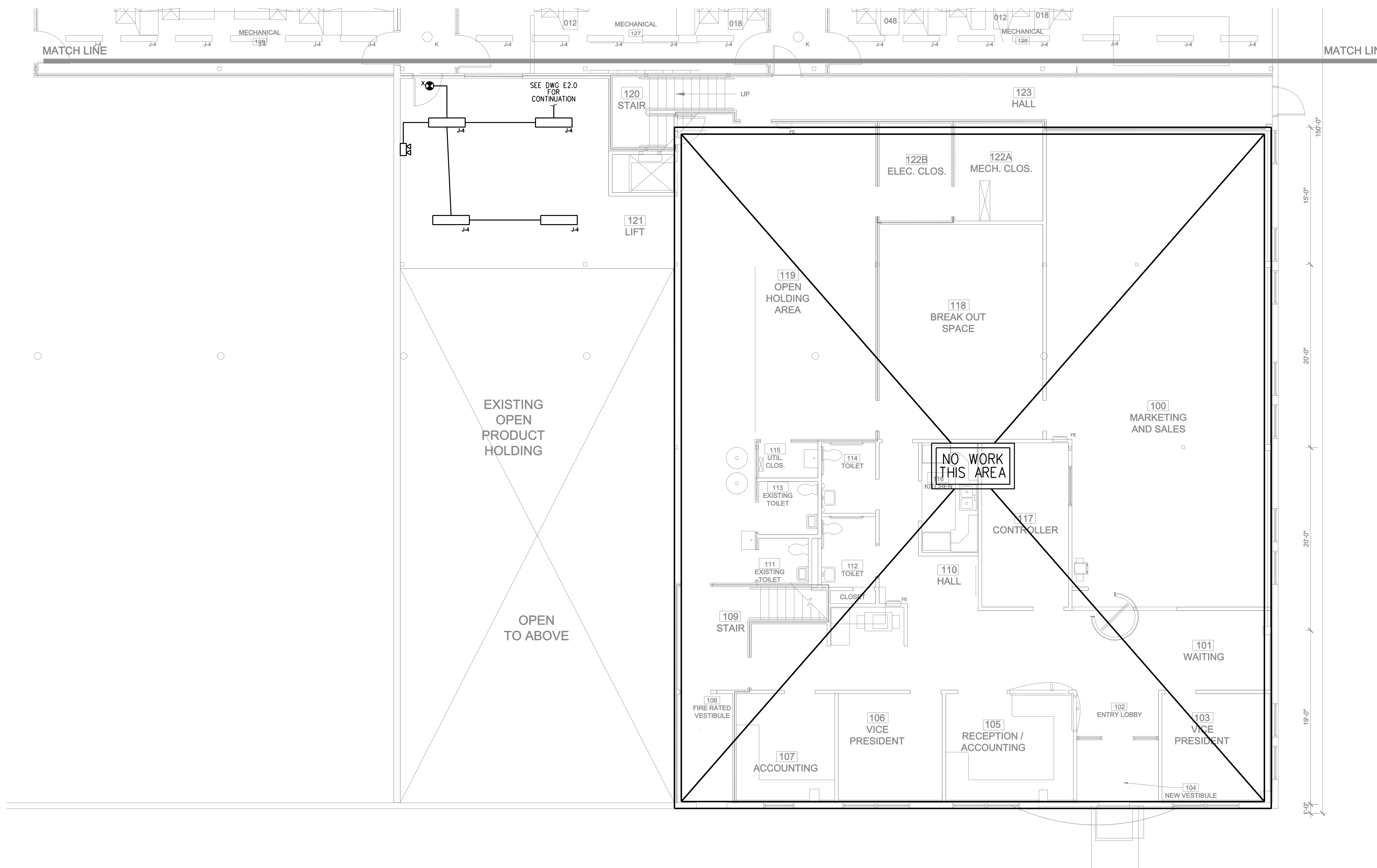
CHECKED BY: xxx

SCALE: AS NOTED

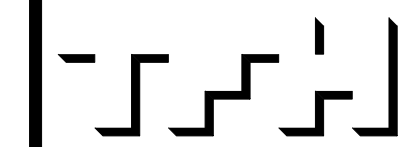
SHEET TITLE:
FIRST FLOOR PLAN
PART A
LIGHTING

E2.0

ISSUED FOR CONSTRUCTION



FIRST FLOOR PLAN - PART B LIGHTING
SCALE: 3/16"=1'-0"



TFH ARCHITECTS
80 MIDDLE STREET
PORTLAND MAINE 04101
TELEPHONE 207 775 6141
ARCHITECTURE PLANNING

CONSULTANTS:
STRUCTURAL:
Bentley Structural Engineers, Inc.
75 York Street
Portland, ME 04101-4450
207-633-1800
MECHANICAL:
Integrated Energy Systems, PLLC
210 Middle Street
Falmouth, ME 04105
207-781-4200
ELECTRICAL:
BENNETT ENGINEERING
7 Bennett Road
Portland, ME 04102
207-865-9475

530 RIVERSIDE KEY PLAN

REVISIONS:

DATE: 8/31/11

PROJECT No. 1026A

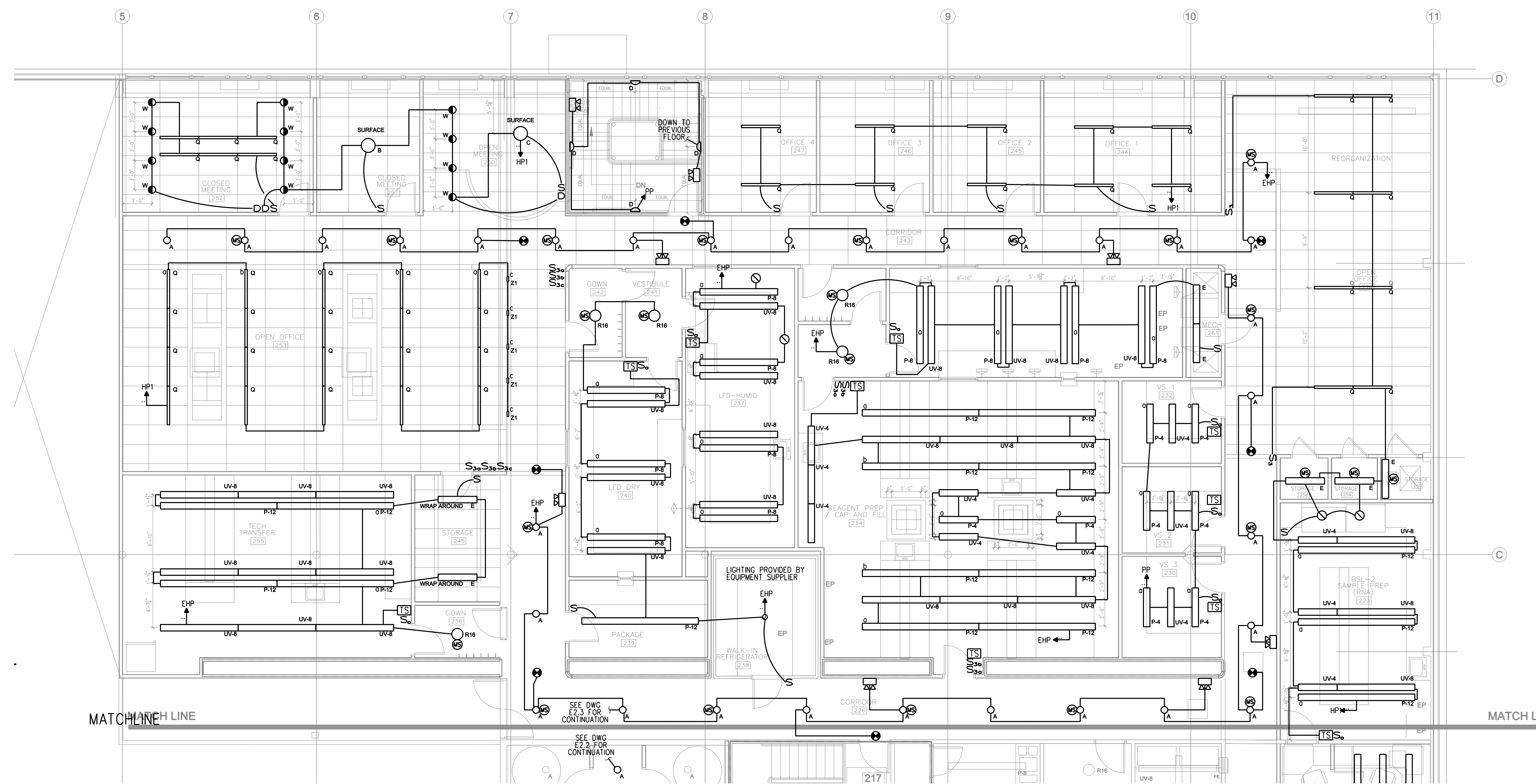
DRAWN BY: TWG

CHECKED BY: xxx

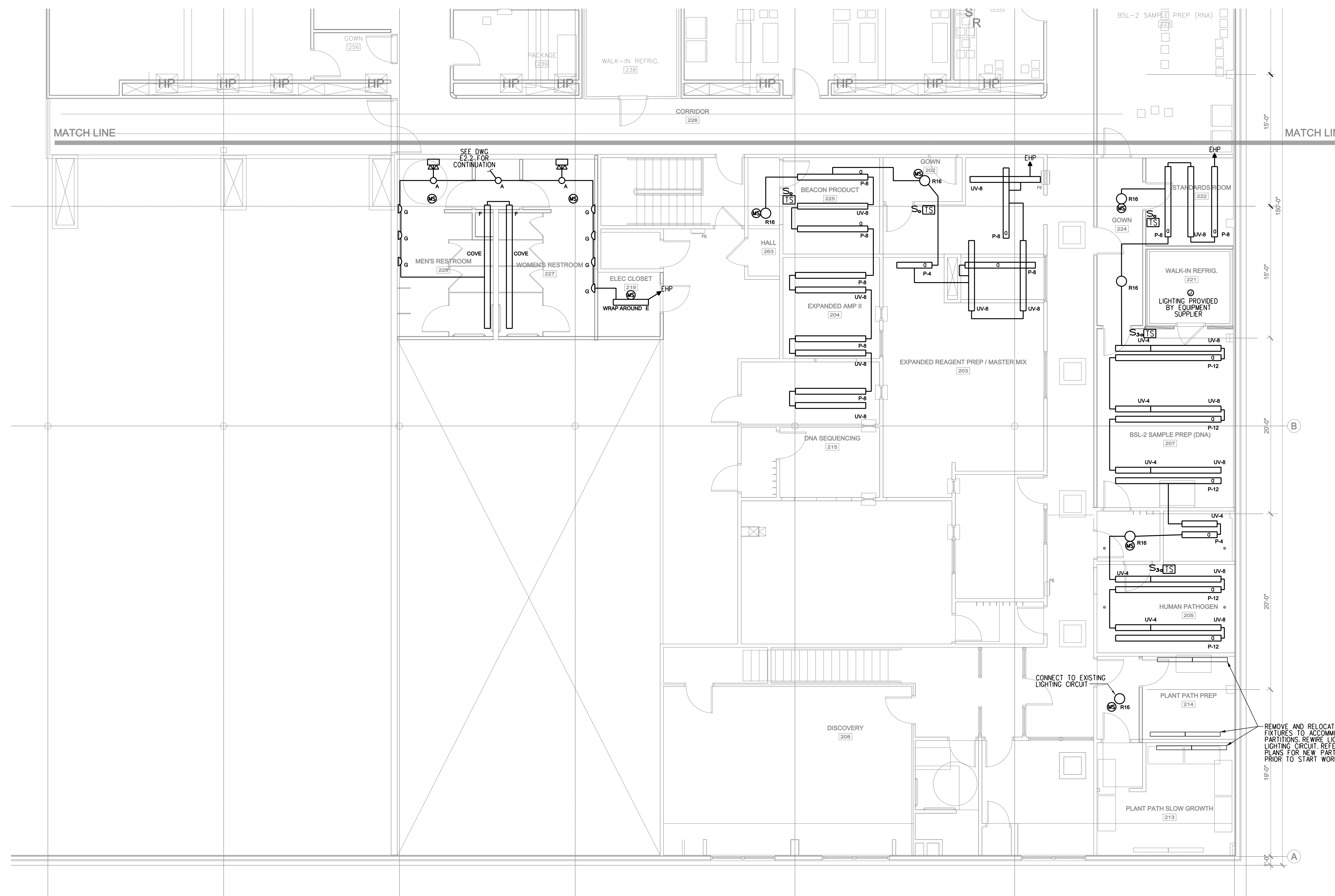
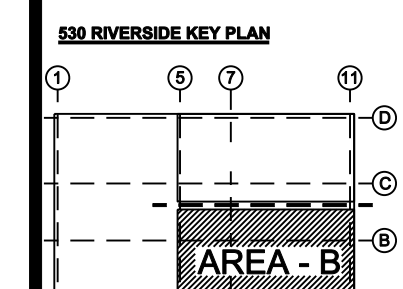
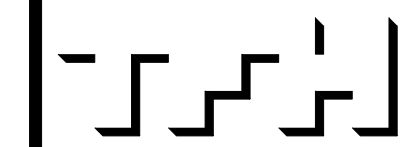
SCALE: AS NOTED

SHEET TITLE:
SECOND FLOOR PLAN
PART A
LIGHTING

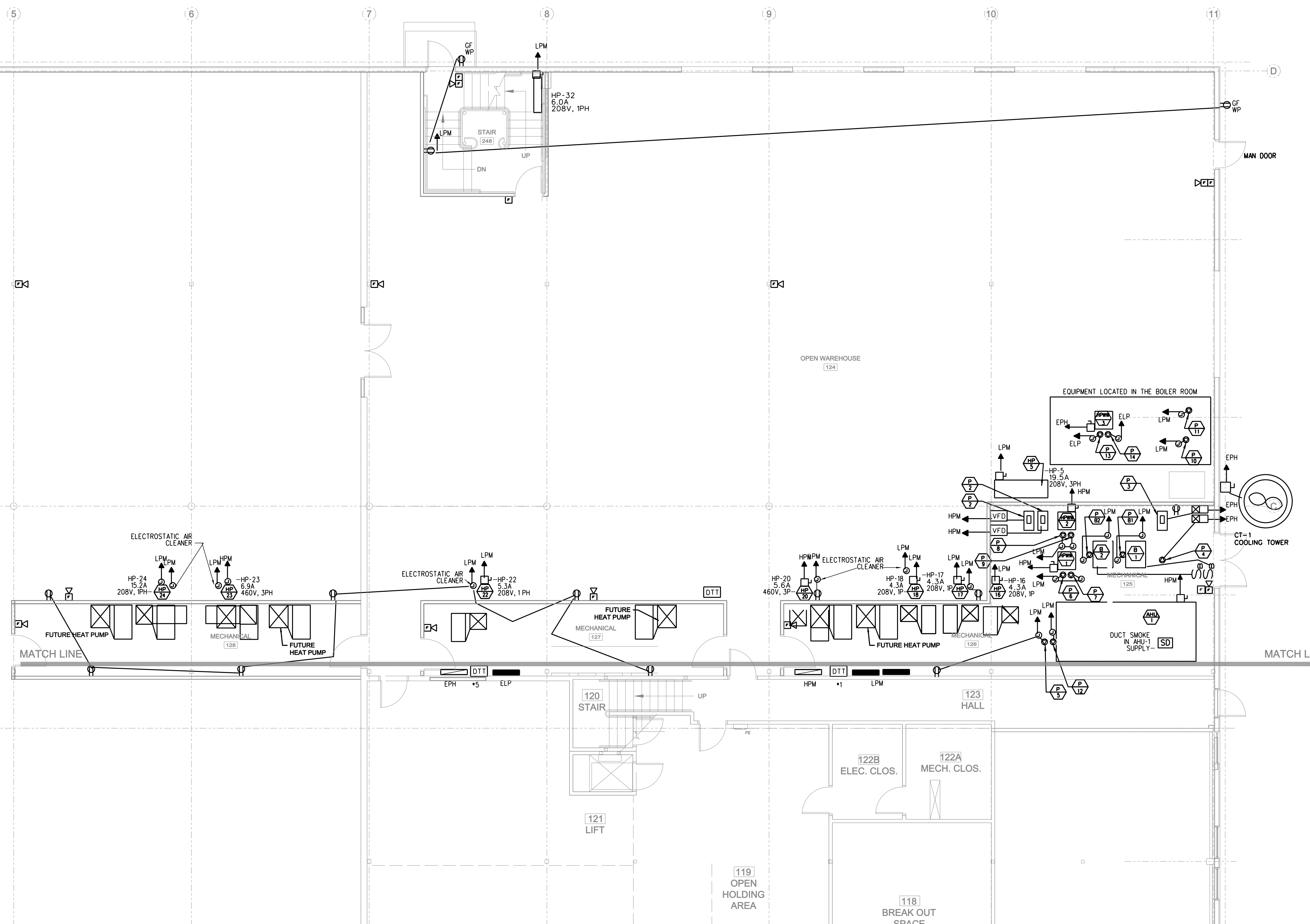
E2.2



SECOND FLOOR PLAN - PART A LIGHTING
3/16"=1'-0"

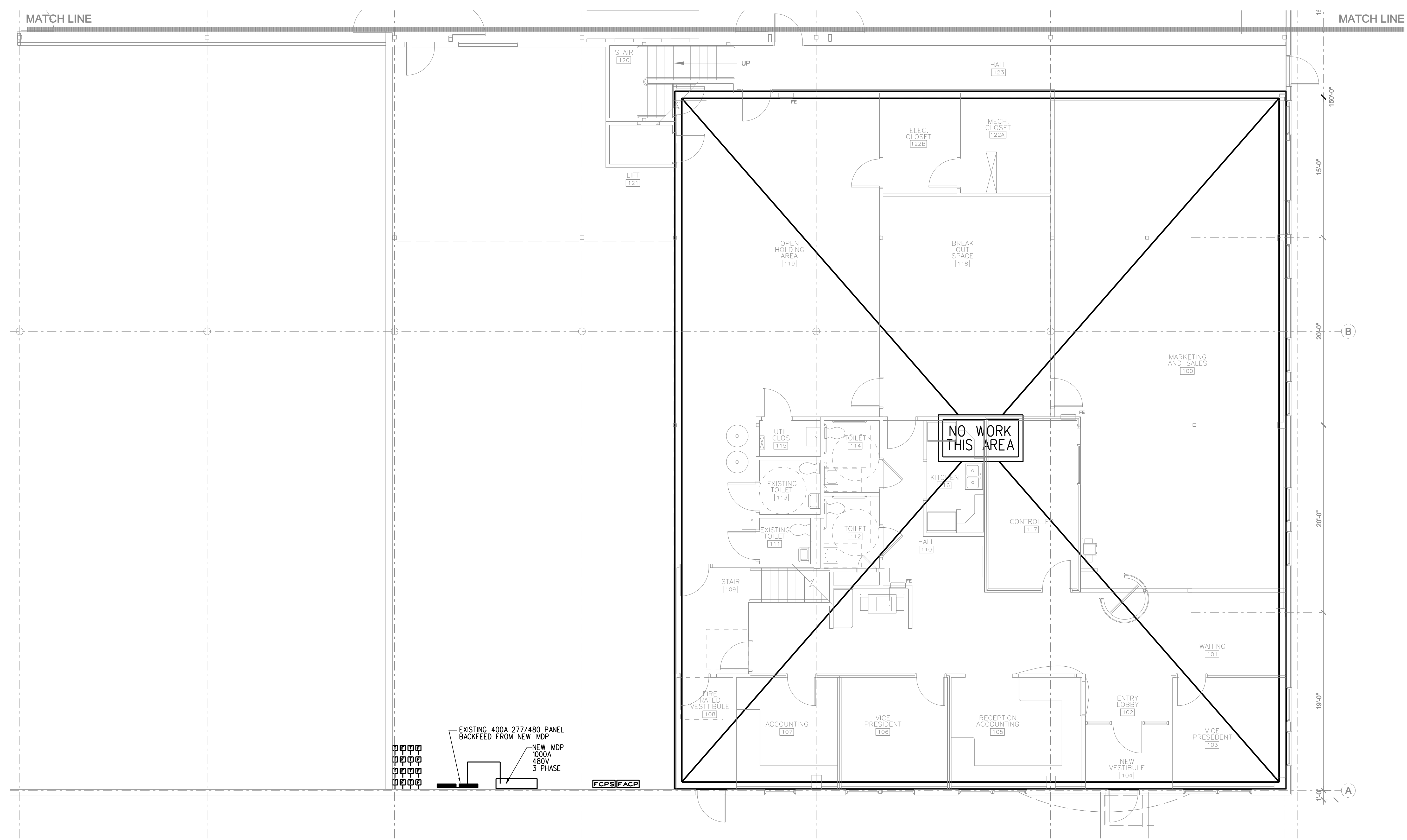


SECOND FLOOR PLAN - PART B LIGHTING
3/16"=1'-0"

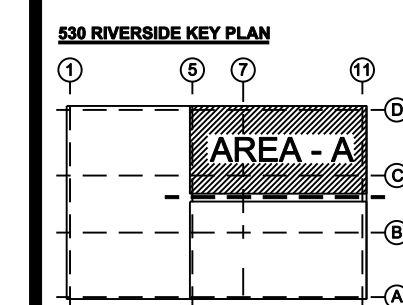
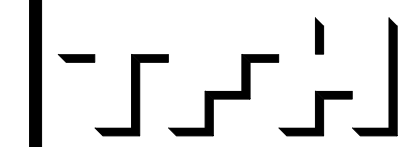


MECHANICAL CONTRACTOR SHALL SUPPLY AND INSTALL VFD'S FOR THE FOLLOWING EQUIPMENT:
AHU-1 SUPPLY FAN, EF-2, P-2A, P-2B, P-5, P-10, P-11 & P-14. VFD FOR P-11 WILL BE INTEGRATED INTO THE PUMP UNIT.
ELECTRICAL CONTRACTOR SHALL SUPPLY ALL ELECTRICAL CONNECTIONS FOR ALL VFD'S.
ELECTRICAL CONTRACTOR SHALL SUPPLY AND INSTALL STARTERS FOR PUMPS P-3,4,6,7,8,9,12,13.
SEE DRAWING M-2 FOR MECHANICAL SCHEDULES

FIRST FLOOR PLAN - PART A POWER
3/16"=1'-0"

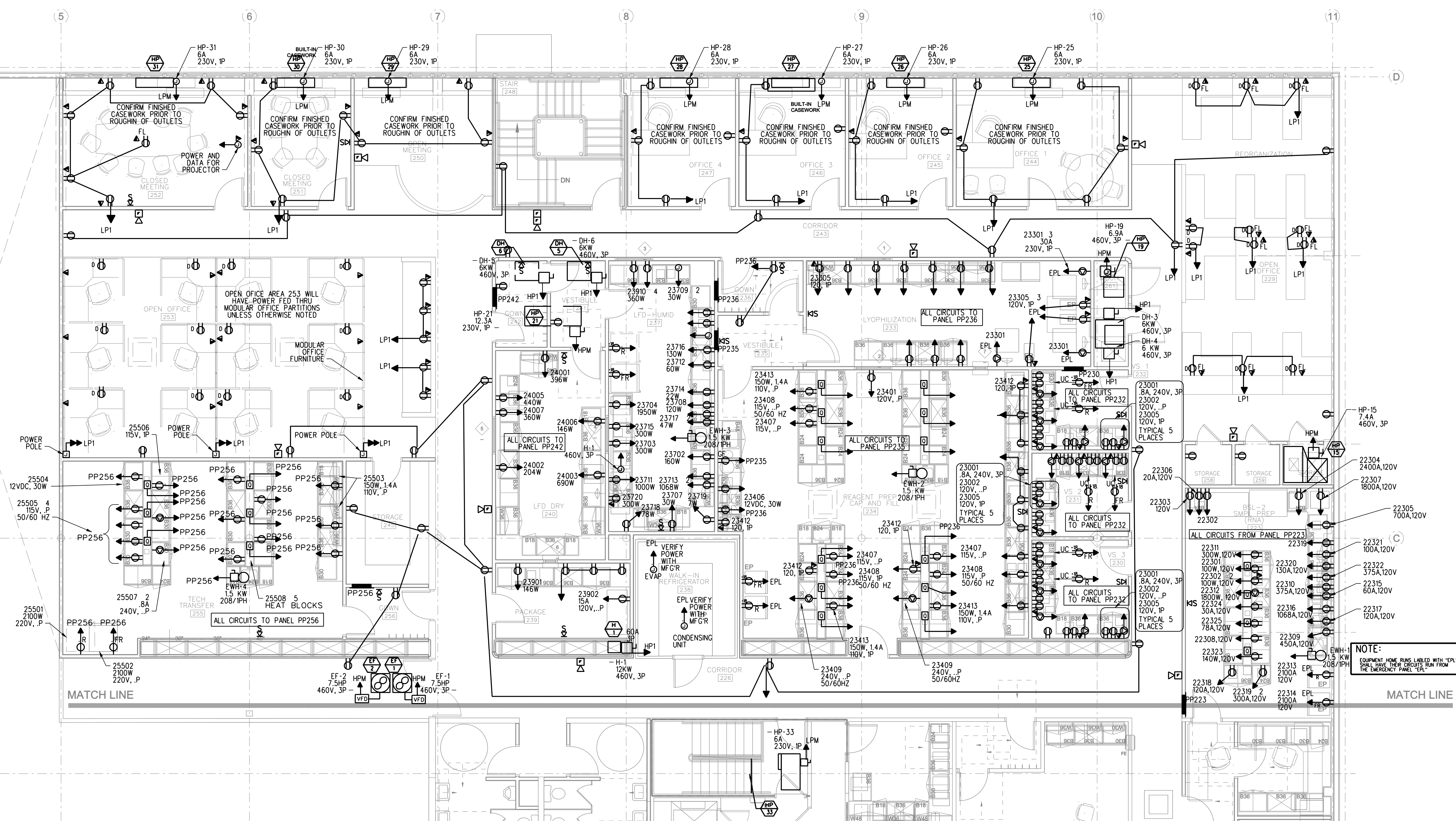


FIRST FLOOR PLAN - PART B POWER
3/16"=1'-0"

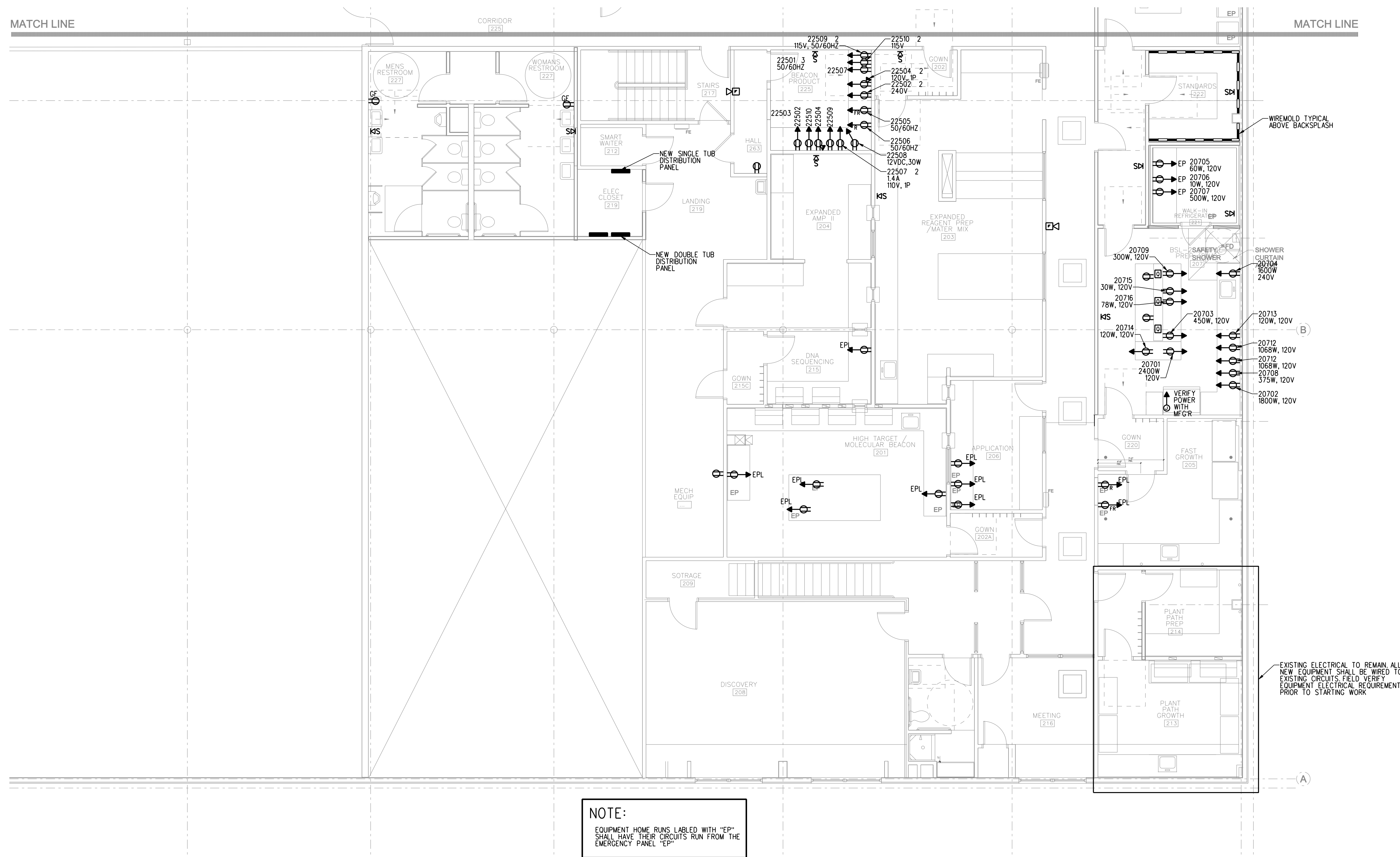


REVISIONS:

| | |
|--------------|--------------------------------------|
| DATE: | 8/31/11 |
| PROJECT No.: | 1026A |
| DRAWN BY: | TWG |
| CHECKED BY: | xxx |
| SCALE: | AS NOTED |
| SHEET TITLE: | SECOND FLOOR PLAN PART A POWER |



SECOND FLOOR PLAN - PART A POWER
3/16"-1"=1'

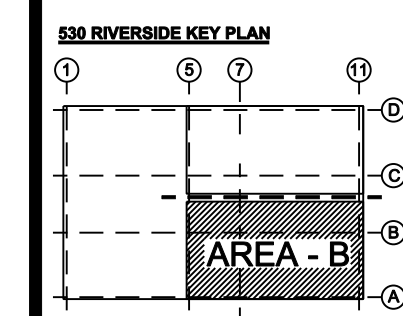


SECOND FLOOR PLAN - PART B POWER
3/16"=1'-0"

EnviroLogix
RIVERSIDE CAMPUS
530 - DNA EXPANSION
PORTLAND, MAINE

TFH ARCHITECTS
80 MIDDLE STREET
PORTLAND MAINE 04101
TELEPHONE 207 775 6141
ARCHITECTURE PLANNING

CONSULTANTS:
STRUCTURAL:
Becker Structural Engineers, Inc.
75 York Street
Portland, ME 04101-4450
207-639-1800
MECHANICAL:
Integrated Energy Systems, LLC
210 Middle Road
Falmouth, ME 04105
207-781-4200
ELECTRICAL:
BENNETT ENGINEERING
7 Bennett Road
Falmouth, ME 04102
207-865-9475



REVISIONS:

DATE: 8/31/11
PROJECT No. 1026A
DRAWN BY: TWG
CHECKED BY: xxx
SCALE: AS NOTED

SHEET TITLE:
SECOND FLOOR PLAN
PART B
POWER

E3.3

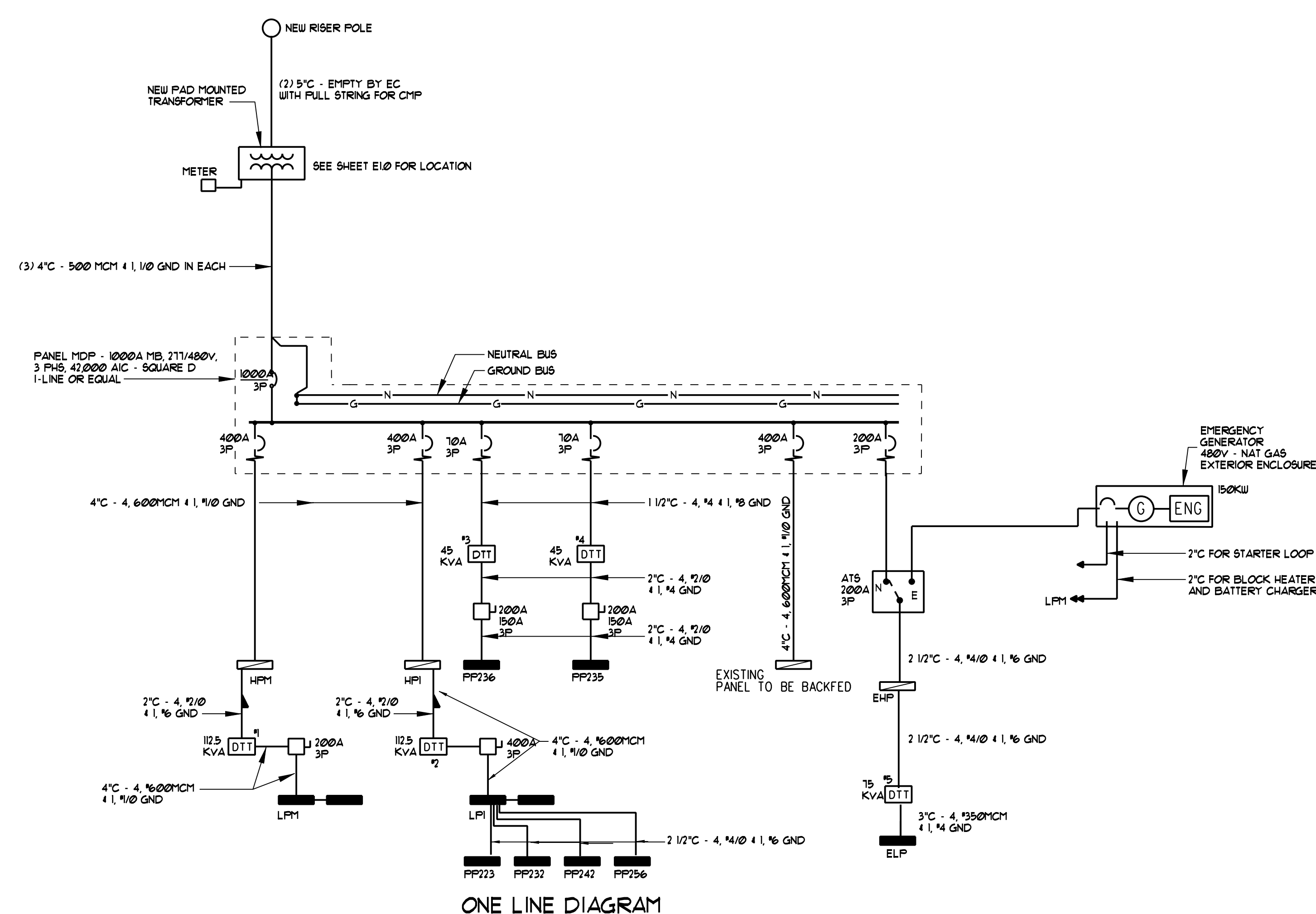
LIGHTING FIXTURE SCHEDULE

| TYPE | DESCRIPTION | LAMPS QUANTITY & TYPE | REMARKS |
|------|---|--|--|
| A | PRESCOLITE LF6INCW100A216MWT | LAMP WITH 75K EQUIV. LED, 3500°K, SCREW IN FLOOD | GWB AND ACT LOCATIONS |
| B | NOT USED | | |
| C | PRIMA LIGHTING "JUSTIN" 763-005423 WB WHITE 18W WC | 18W LAMP INCLUDED | STARWELL SCENCE |
| D | EUREKA 3213-CHR-WH SILOS | REFER TO SPEC FOR LAMPING | |
| E | COLUMBIA LIGHTING WC4-228-EU | (2) 4' T5, 28W | |
| F | COLUMBIA LIGHTING TYPE "SS", SS-...-2...-120 | REFER TO CUT SHEET FOR LAMPING | STAGGERED STRIP, BARE LAMP W/1 ARCH COVE, 2 LAMP, SEE PLAN FOR LENGTHS |
| G | EUREKA 3540-23-CHR-WH | F, T5, 14 | VANITY LIGHT |
| H | NOT USED | | |
| I | NOT USED | | |
| J4 | PROGRESS LIGHTING P7186-30EB | (2) F32TB | UTILITY LIGHT |
| K | PROGRESS LIGHTING P5094-30 | LAMP WITH 75W EQUIV. LED, 3500°K SCREW IN FLOOD | |
| L | NOT USED | | |
| M | NOT USED | | |
| N | NOT USED | | |
| O | NOT USED | | |
| P-4 | FINELITE S12-P-WCB-8"-2T8-SC-91W-OPEN-120V-FA50"-CE-C1 | (2) T8 | 4 FOOT LENGTH |
| P-8 | FINELITE S12-P-WCB-8"-2T8-SC-91W-OPEN-120V-FA50"-CE-C1 | (2) T8 | 8 FOOT LENGTH |
| P-12 | FINELITE S12-P-WCB-12"-2T8-SC-91W-OPEN-120V-FA50"-CE-C1 | (2) T8 | 12 FOOT LENGTH |
| Q | FINELITE HPR-A-1 4-DCO-LED-3500°K-120-SC-C1-OBO | | |
| R16 | PROGRESS LIGHTING P7310-60STRWB (16" DIAMETER) | (2) 13W 4-PIN QUAD FL G24Q-1 BASE | |
| R20 | PROGRESS LIGHTING P7309-60 (20" DIAMETER) | (1) FC2T9 32W | |
| S | NOT USED | | |
| T | NOT USED | | |
| UV4 | COLUMBIA LIGHTING WC4-232-NO LENS-EU | PHILLIPS TUV-36W GERMICIDAL | 4 FOOT LENGTH |
| UV8 | COLUMBIA LIGHTING WC8-232-NO LENS-EU | PHILLIPS TUV-36W GERMICIDAL | 8 FOOT LENGTH |
| V | CREE LREC-DR1000 | NEUTRAL COLOR 3500°K, GU24 BASE | ACCESSORY TRIM LT6A-DR, HOUSING SC6 |
| W | PRESCOLITE LF6INC | LAMP WITH 75K EQUIV. LED 3500°K, SCREW IN FLOOD | |
| X | COMPASS LIGHTING CSXWREB3 (EXIT LIGHT) | LED SUPPLIED W/ UNIT | |
| Y | COMPASS LIGHTING CSEU2 (EMERGENCY LIGHT) | (2) 5.4W | |
| Z | ALICO INDUSTRIES WLE-102 | 1W LED | STEP LIGHT, REFER TO PLANS FOR LOCATIONS |

ALL lighting fixtures shall be energy star rated or have high performance T8 ballast and lamps to meet efficiency maine criteria.
OFFICE AND COMMON AREAS TO BE 3500°K
ALL LAB LIGHTING TO BE 5000°K
REFER TO ARCHITECTURAL REFLECTED CEILING PLANS FOR FIXTURE LOCATIONS

SYMBOL LEGEND

- POWER PANEL 277/480, 3PHS, 4WIRE
- POWER PANEL 120/208, 3PHS, 4WIRE
- ELECTRIC MOTOR DRIVEN EQUIPMENT, HP SHOWN
- MANUAL MOTOR STARTER SWITCH WITH THERMAL OVERLOAD DEVICE MOUNT AT UNIT
- JUNCTION BOX
- DISCONNECT SWITCH - 600 VOLT - SIZE & NO. POLES AS NOTED.
- DISCONNECT SWITCH - 250 VOLT - SIZE & NO. POLES AS NOTED.
- COMBINATION CIRCUIT BREAKER & MAGNETIC MOTOR STARTER - NEMA SIZE 1 W/4 AUX. CONTACTS AND HAND-OFF-AUTO SWITCH W/RED POWER ON PILOT LIGHT, SUPPLIED BY E.C. - UNLESS OTHERWISE NOTED.
- VARIABLE SPEED DRIVE SUPPLIED BY M.C. WIRED BY E.C.
- LIGHTING FIXTURES - CAPITAL LETTERS DENOTE TYPE AS PER LIGHTING FIXTURE SCHEDULE. LOWER CASE LETTERS INDICATE SWITCH CONTROL. "IB" INDICATES INBOARD LAMPS CONTROLLED BY SWITCH "b" - OUTBOARD CONTROLLED BY SWITCH "o". DIAGONAL INDICATES NIGHT LIGHT (UNSWITCHED)
- EXIT LIGHT FIXTURE - UNSWITCHED - SEE LIGHTING FIXTURE SCHEDULE
- SELF CONTAINED EMERGENCY LIGHTING UNIT W/2 HEADS.
- SINGLE POLE SWITCH, 120 VOLT, 20 AMP SPECIFICATION GRADE, GROUNDING TYPE, MOUNT 48" AFF. 3-3-WAY 4-4-WAY 2-PILOT, WP-WEATHERPROOF. LOWER CASE LETTER INDICATES FIXTURE OR CONTROLLED LOAD. PILOT LIGHT SWITCHES SHALL BE PROVIDED W/ ENGRAVED NAMEPLATE IDENTIFYING USE.
- LIGHTING DIMMER SWITCH, SPECIFICATION GRADE, GROUNDING TYPE, MOUNT 48"
- MOTION SENSOR SWITCH, 120 VOLT, WALL MOUNT 48" OR CEILING MOUNTED - DUAL TECHNOLOGY.
- RACEWAY & WIRING MC CABLE RUN CONCEALED IN WALLS/CEILINGS.
- RACEWAY & WIRING RUN EXPOSED
- RACEWAY & WIRING RUN CONCEALED UNDER FLOOR
- HOME RUN TO PANEL - ARROWS INDICATE QUANTITY OF CIRCUITS - NUMERALS DENOTE CIRCUIT NUMBERS
- TEMPERATURE CONTROL PANEL - SUPPLIED BY M.C. WIRED BY E.C.
- DUPLEX RECEPTACLE - 20A, 125V SPECIFICATION GRADE GROUNDING TYPE MOUNT 18" AFF OR AS INDICATED ON DRAWINGS. "R" DENOTES REFRIGERATOR
- DOUBLE DUPLEX RECEPTACLE - 20A, 125V SPECIFICATION GRADE GROUNDING TYPE AND MOUNT 18" AFF OR AS INDICATED ON DRAWINGS.
- DUPLEX RECEPTACLE - GROUND FAULT OUTLET 20A, 125V - SPECIFICATION GRADE FLUSH MOUNTED 45" AFF - EXCEPT AS NOTED
- DUPLEX RECEPTACLE - FLUSH FLOOR MOUNTED 20A, 125V SPECIFICATION GRADE GROUNDING TYPE
- PEDESTAL TYPE OUTLET FISHER HAMILTON MODEL 227HD OR EQUAL 2-GANG, DOUBLE FACED SUPPLIED BY CASEWORKER WIRED BY ELECTRICAL CONTRACTOR
- FIRE ALARM HEAT DETECTOR, FIXED TEMPERATURE 200°F
- SMOKE DETECTOR, PHOTOELECTRIC TYPE - SYSTEM CONNECTED
- FIRE ALARM PULL STATION MOUNT 48" AFF
- FIRE ALARM AUDIO/VISUAL, MOUNT AT 6'-8" AFF "MH" DENOTES MINI HORN NUMERALS INDICATE CANDELA RATING
- FIRE ALARM VISUAL STROBE ONLY, MOUNT AT 6'-8" AFF NUMERALS INDICATE CANDELA RATING
- DUCT MOUNTED SMOKE DETECTOR
- FIRE ALARM ANNUNCIATOR PANEL
- FIRE ALARM CONTROL PANEL
- TELEPHONE/DATA DUAL JACK LOCATION - FLUSH FLOOR MOUNTED - TWO CAT 5E CABLES BACK TO TBB.
- TELEPHONE/DATA DUAL JACK LOCATION MOUNT 18" AFF - TWO CAT 5E CABLES BACK TO TBB.
- TELEPHONE JACK LOCATION MOUNT 18" AFF - ONE CAT 5E CABLE BACK TO TBB.
- TV OUTLET LOCATION
- MAGNETIC DOOR HOLDER
- CARD READER
- DOOR ELECTRIC STRIKE
- FWU DENOTES FURNISHED WITH UNIT
- WP DENOTES WEATHERPROOF CONSTRUCTION
- UC UNDER COUNTER, FR- FREEZER, R- REFRIGERATOR



TFH ARCHITECTS
80 MIDDLE STREET
PORTLAND MAINE 04101
TELEPHONE 207 775 6141
ARCHITECTURE PLANNING

CONSULTANTS:
STRUCTURAL:
Bentley Structural Engineers, Inc.
75 York Road
Portland, ME 04101-4450
207-679-1800
Mechanical:
Integrated Energy Systems, LLC
210 Middle Road
Falmouth, ME 04105
207-784-4200
ELECTRICAL:
BENNETT ENGINEERING
7 Bennett Road
Portland, ME 04102
207-865-9475

530 RIVERSIDE KEY PLAN

REVISIONS:

DATE: 8/31/11
PROJECT No. 1026A
DRAWN BY: TWG
CHECKED BY: xxx
SCALE: AS NOTED

SHEET TITLE:
LEGEND, DETAILS,
SCHEDULES

E4.0

