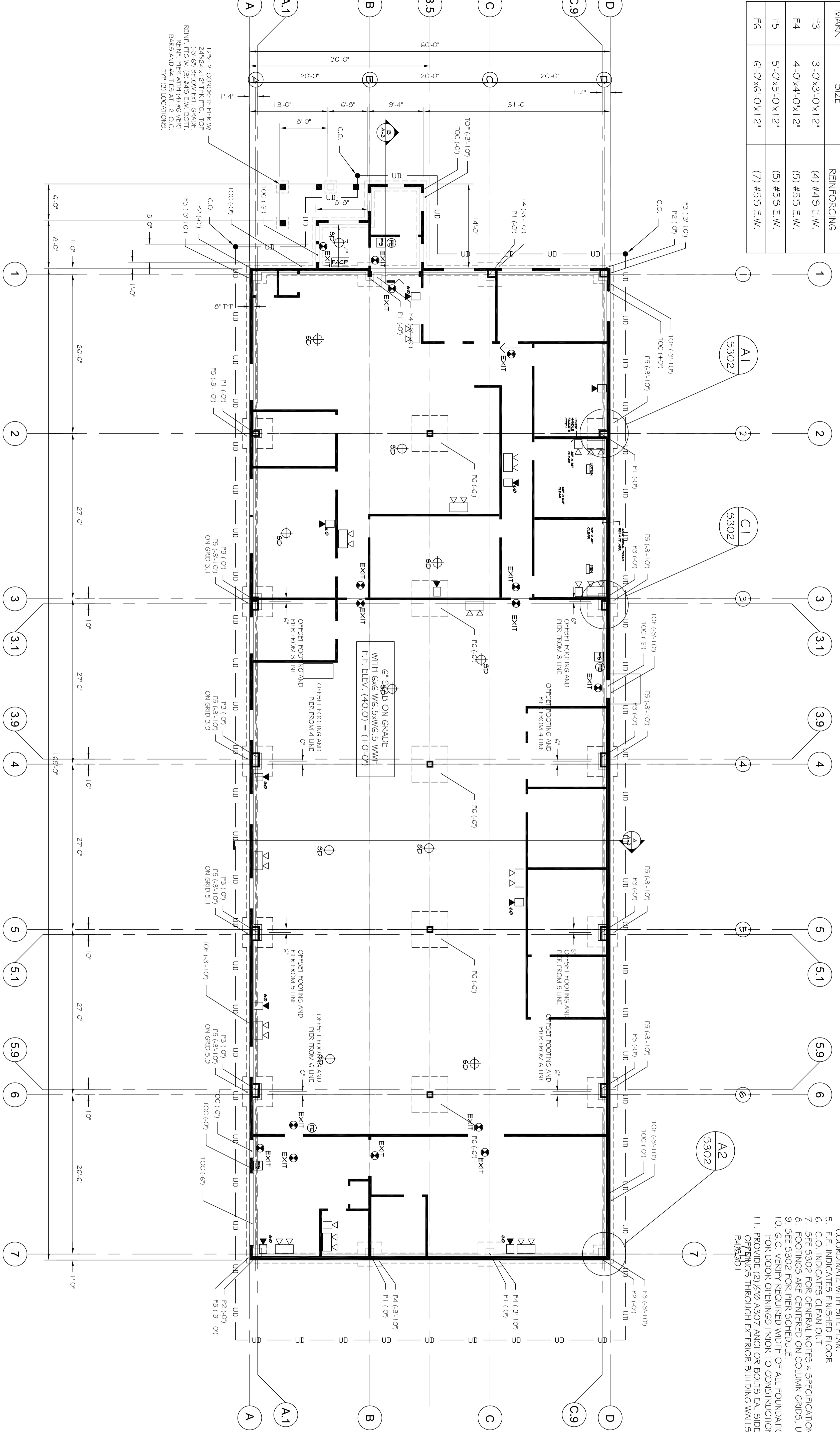


FOOTING SCHEDULE		
MARK	SIZE	BOTTOM REINFORCING
F3	3'-0"x3'-0"x12"	(4) #4 S E.W.
F4	4'-0"x4'-0"x12"	(5) #5 S E.W.
F5	5'-0"x5'-0"x12"	(5) #5 S E.W.
F6	6'-0"x6'-0"x12"	(7) #5 S E.W.



- NOTES:
1. TOC INDICATES TOP OF FOOTING
 2. TOC INDICATES TOP OF CONCRETE
 3. TOP OF CONCRETE AND TOP OF FOOTING ELEVATIONS ARE REFERENCED FROM FINISHED FLOOR ELEVATION = (+0'-0").
 4. — UD — INDICATES 4" SCHED. 40 PERFORATED PVC UNDERDRAIN (SHOWN SCHEMATICALLY) COORDINATE WITH SITE PLAN.
 5. F.F. INDICATES FINISHED FLOOR
 6. C.O. INDICATES CLEAN OUT
 7. SEE S302 FOR GENERAL NOTES & SPECIFICATIONS
 8. FOOTINGS ARE CENTERED ON COLUMN GRIDS. UNO.
 9. SEE S302 FOR PIER SCHEDULE
 10. G.C. VERIFY REQUIRED WIDTH OF ALL FOUNDATION WALL BOND-OUTS FOR DOOR OPENINGS PRIOR TO CONSTRUCTION.
 11. PROVIDE (2) 1/2" A307 ANCHOR BOLTS EA. SIDE OF FRAMED OPENINGS THROUGH EXTERIOR BUILDING WALLS. SEE DETAIL B45301

FOUNDATION PLAN
SCALE: 1/8" = 1'-0"

No.	BY	DESCRIPTION	DATE

DATE: 11-06-09-05	SCALE: AS NOTED
DESIGN BY: ASW	DRAWN BY: ASW
FILE #: 05005-5101	PROJECT NUMBER:
SHEET NO.: 101	

PROJECT: McALISTER FARM BUILDING
PORTLAND, ME
FOR: KEN PORTER - PORTER DRYWALL

SHEET TITLE: FOUNDATION PLAN
ISSUED FOR PERMITTING

THIS DRAWING, DESIGN AND SPECIFICATIONS ARE THE PROPERTY OF ASSOCIATED DESIGN PARTNERS, INC. NO REPRODUCTION, COPYING OR ANY PART THEREOF IS PERMITTED WITHOUT WRITTEN CONSENT OF ASSOCIATED DESIGN PARTNERS, INC.

ASSOCIATED DESIGN PARTNERS INC.

80 Leighton Road Falmouth, Maine 04105

Office: (207) 878-1751
Fax: (207) 878-1788
E-Mail: adp@adpengineering.com