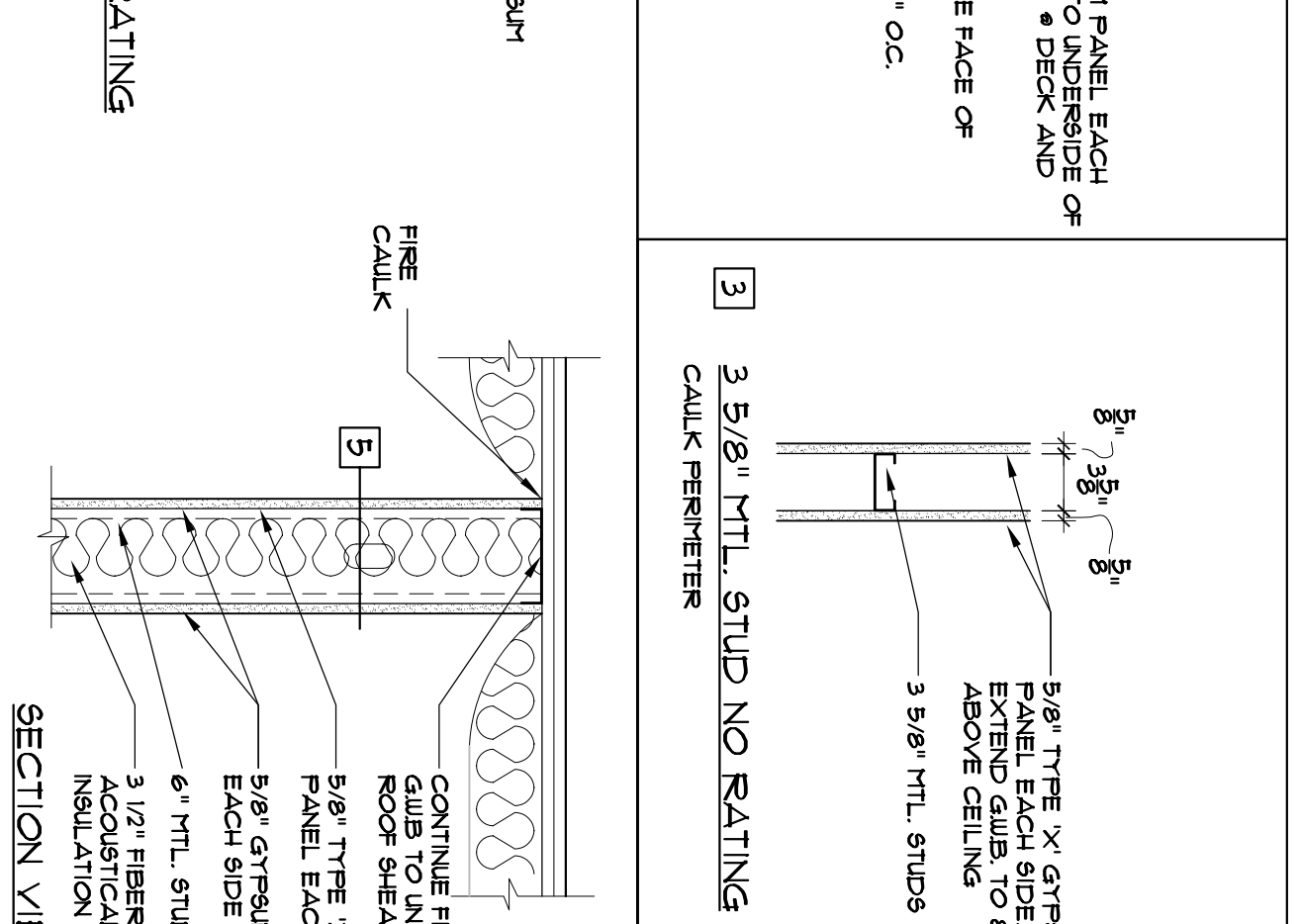
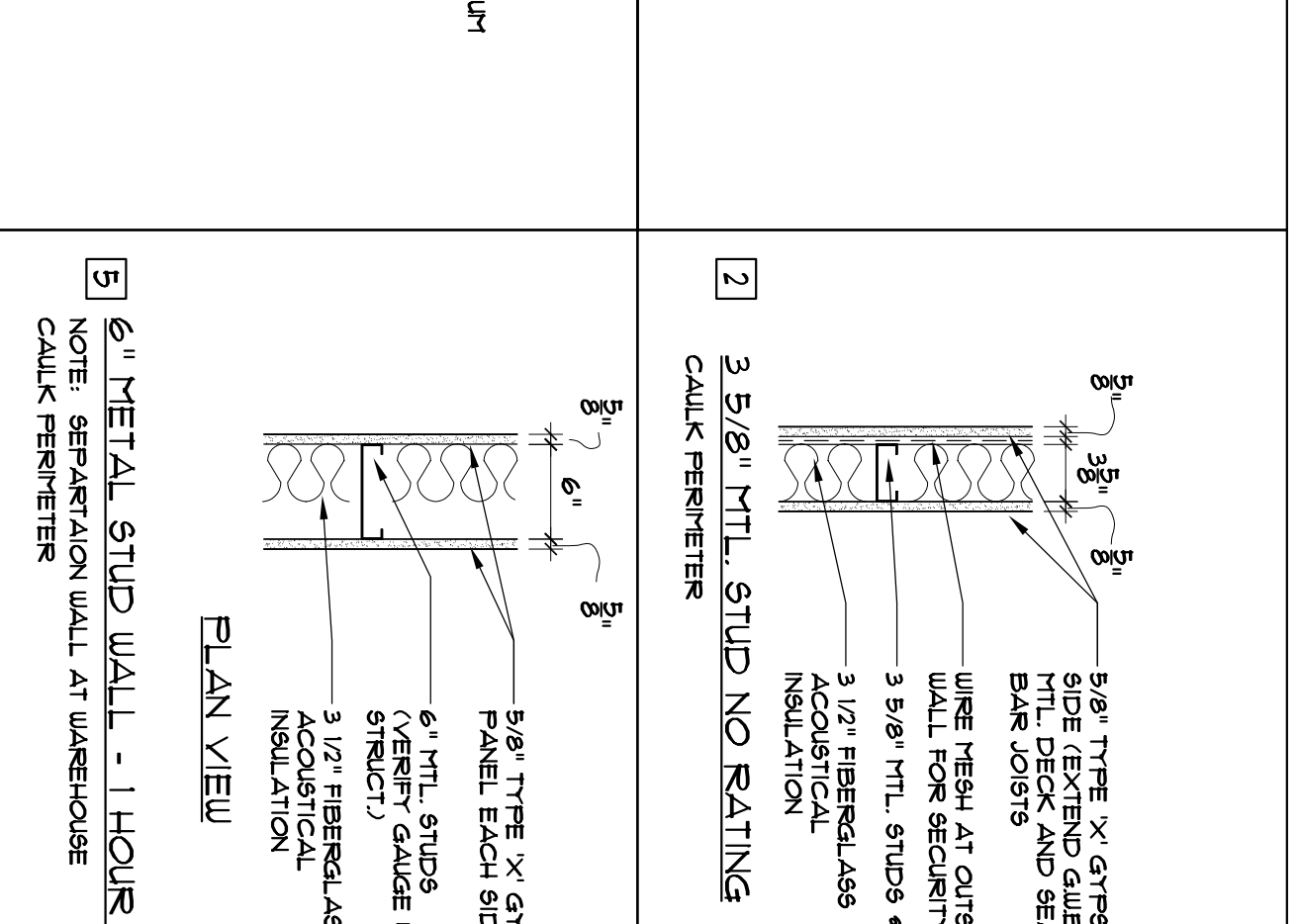
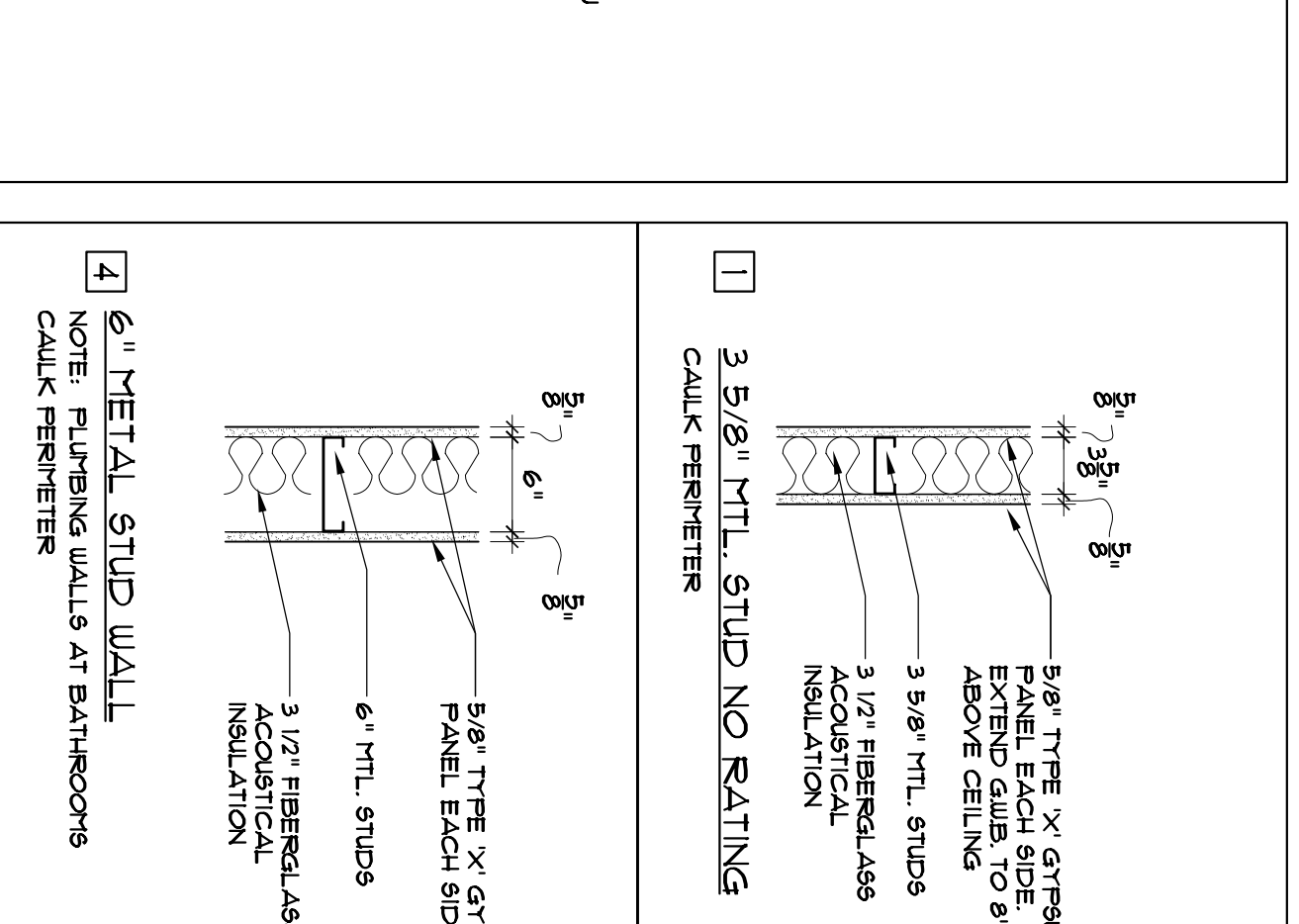
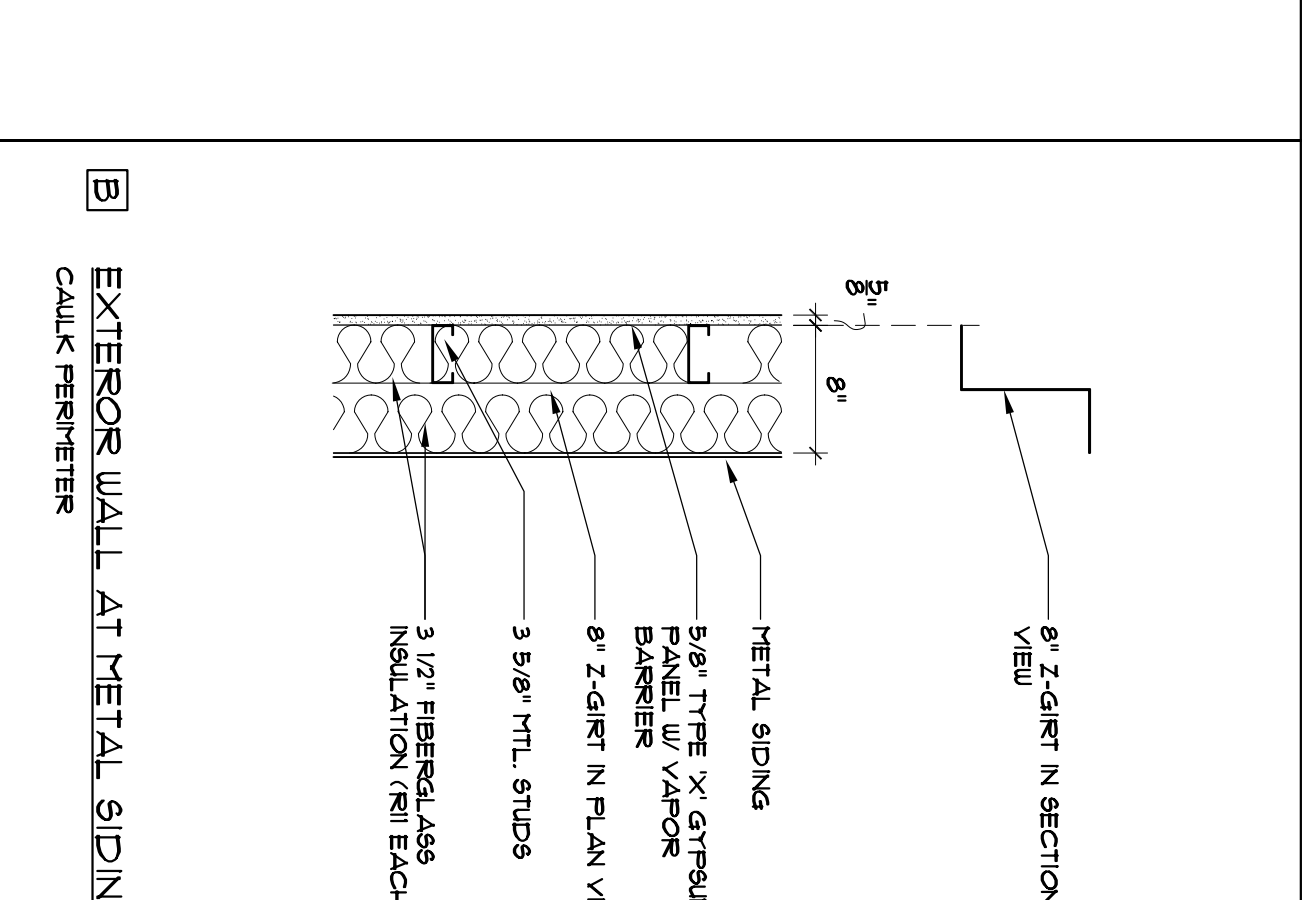
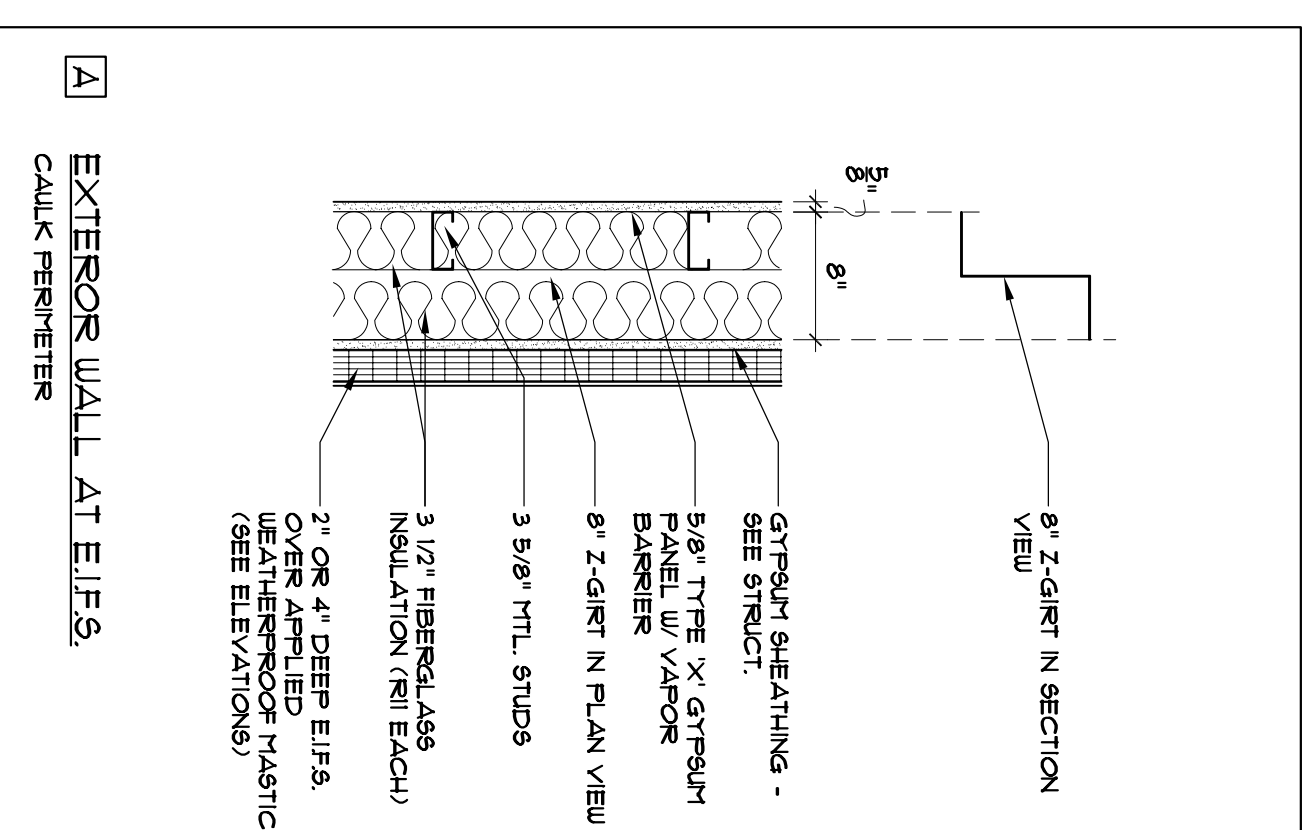


OCCUPANT LOAD - TABLE 104.1.2	
FIRE GROUP CLASSIFICATION - SECTION 703.4.1	
TYPE OF CONSTRUCTION - TABLE 602	
TABLE 603 BUILDING HEIGHT LIMITATION - SQ. FT.	
TABLE 604 STREET FRONTAGE HEIGHT LIMITATION (80%) - SQ. FT.	
TABLE 605 RAILROAD CROSSING OVERPASS (80%) - SQ. FT.	
TABLE 606 RAILROAD CROSSING UNDERPASS (80%) - SQ. FT.	
TABLE 607 RAILROAD CROSSING UNDERPASS (80%) - SQ. FT.	
TABLE 608 RAILROAD CROSSING UNDERPASS (80%) - SQ. FT.	
TABLE 609 RAILROAD CROSSING UNDERPASS (80%) - SQ. FT.	
TABLE 610 RAILROAD CROSSING UNDERPASS (80%) - SQ. FT.	
TABLE 611 RAILROAD CROSSING UNDERPASS (80%) - SQ. FT.	
TABLE 612 RAILROAD CROSSING UNDERPASS (80%) - SQ. FT.	
TABLE 613 RAILROAD CROSSING UNDERPASS (80%) - SQ. FT.	
TABLE 614 RAILROAD CROSSING UNDERPASS (80%) - SQ. FT.	
TABLE 615 RAILROAD CROSSING UNDERPASS (80%) - SQ. FT.	
TABLE 616 RAILROAD CROSSING UNDERPASS (80%) - SQ. FT.	
TABLE 617 RAILROAD CROSSING UNDERPASS (80%) - SQ. FT.	
TABLE 618 RAILROAD CROSSING UNDERPASS (80%) - SQ. FT.	
TABLE 619 RAILROAD CROSSING UNDERPASS (80%) - SQ. FT.	
TABLE 620 RAILROAD CROSSING UNDERPASS (80%) - SQ. FT.	
TABLE 621 RAILROAD CROSSING UNDERPASS (80%) - SQ. FT.	
TABLE 622 RAILROAD CROSSING UNDERPASS (80%) - SQ. FT.	
TABLE 623 RAILROAD CROSSING UNDERPASS (80%) - SQ. FT.	
TABLE 624 RAILROAD CROSSING UNDERPASS (80%) - SQ. FT.	
TABLE 625 RAILROAD CROSSING UNDERPASS (80%) - SQ. FT.	
TABLE 626 RAILROAD CROSSING UNDERPASS (80%) - SQ. FT.	
TABLE 627 RAILROAD CROSSING UNDERPASS (80%) - SQ. FT.	
TABLE 628 RAILROAD CROSSING UNDERPASS (80%) - SQ. FT.	
TABLE 629 RAILROAD CROSSING UNDERPASS (80%) - SQ. FT.	
TABLE 630 RAILROAD CROSSING UNDERPASS (80%) - SQ. FT.	
TABLE 631 RAILROAD CROSSING UNDERPASS (80%) - SQ. FT.	
TABLE 632 RAILROAD CROSSING UNDERPASS (80%) - SQ. FT.	
TABLE 633 RAILROAD CROSSING UNDERPASS (80%) - SQ. FT.	
TABLE 634 RAILROAD CROSSING UNDERPASS (80%) - SQ. FT.	
TABLE 635 RAILROAD CROSSING UNDERPASS (80%) - SQ. FT.	
TABLE 636 RAILROAD CROSSING UNDERPASS (80%) - SQ. FT.	
TABLE 637 RAILROAD CROSSING UNDERPASS (80%) - SQ. FT.	
TABLE 638 RAILROAD CROSSING UNDERPASS (80%) - SQ. FT.	
TABLE 639 RAILROAD CROSSING UNDERPASS (80%) - SQ. FT.	
TABLE 640 RAILROAD CROSSING UNDERPASS (80%) - SQ. FT.	
TABLE 641 RAILROAD CROSSING UNDERPASS (80%) - SQ. FT.	
TABLE 642 RAILROAD CROSSING UNDERPASS (80%) - SQ. FT.	
TABLE 643 RAILROAD CROSSING UNDERPASS (80%) - SQ. FT.	
TABLE 644 RAILROAD CROSSING UNDERPASS (80%) - SQ. FT.	
TABLE 645 RAILROAD CROSSING UNDERPASS (80%) - SQ. FT.	
TABLE 646 RAILROAD CROSSING UNDERPASS (80%) - SQ. FT.	
TABLE 647 RAILROAD CROSSING UNDERPASS (80%) - SQ. FT.	
TABLE 648 RAILROAD CROSSING UNDERPASS (80%) - SQ. FT.	
TABLE 649 RAILROAD CROSSING UNDERPASS (80%) - SQ. FT.	
TABLE 650 RAILROAD CROSSING UNDERPASS (80%) - SQ. FT.	
TABLE 651 RAILROAD CROSSING UNDERPASS (80%) - SQ. FT.	
TABLE 652 RAILROAD CROSSING UNDERPASS (80%) - SQ. FT.	
TABLE 653 RAILROAD CROSSING UNDERPASS (80%) - SQ. FT.	
TABLE 654 RAILROAD CROSSING UNDERPASS (80%) - SQ. FT.	
TABLE 655 RAILROAD CROSSING UNDERPASS (80%) - SQ. FT.	
TABLE 656 RAILROAD CROSSING UNDERPASS (80%) - SQ. FT.	
TABLE 657 RAILROAD CROSSING UNDERPASS (80%) - SQ. FT.	
TABLE 658 RAILROAD CROSSING UNDERPASS (80%) - SQ. FT.	
TABLE 659 RAILROAD CROSSING UNDERPASS (80%) - SQ. FT.	
TABLE 660 RAILROAD CROSSING UNDERPASS (80%) - SQ. FT.	
TABLE 661 RAILROAD CROSSING UNDERPASS (80%) - SQ. FT.	
TABLE 662 RAILROAD CROSSING UNDERPASS (80%) - SQ. FT.	
TABLE 663 RAILROAD CROSSING UNDERPASS (80%) - SQ. FT.	
TABLE 664 RAILROAD CROSSING UNDERPASS (80%) - SQ. FT.	
TABLE 665 RAILROAD CROSSING UNDERPASS (80%) - SQ. FT.	
TABLE 666 RAILROAD CROSSING UNDERPASS (80%) - SQ. FT.	
TABLE 667 RAILROAD CROSSING UNDERPASS (80%) - SQ. FT.	
TABLE 668 RAILROAD CROSSING UNDERPASS (80%) - SQ. FT.	
TABLE 669 RAILROAD CROSSING UNDERPASS (80%) - SQ. FT.	
TABLE 670 RAILROAD CROSSING UNDERPASS (80%) - SQ. FT.	
TABLE 671 RAILROAD CROSSING UNDERPASS (80%) - SQ. FT.	
TABLE 672 RAILROAD CROSSING UNDERPASS (80%) - SQ. FT.	
TABLE 673 RAILROAD CROSSING UNDERPASS (80%) - SQ. FT.	
TABLE 674 RAILROAD CROSSING UNDERPASS (80%) - SQ. FT.	
TABLE 675 RAILROAD CROSSING UNDERPASS (80%) - SQ. FT.	
TABLE 676 RAILROAD CROSSING UNDERPASS (80%) - SQ. FT.	
TABLE 677 RAILROAD CROSSING UNDERPASS (80%) - SQ. FT.	
TABLE 678 RAILROAD CROSSING UNDERPASS (80%) - SQ. FT.	
TABLE 679 RAILROAD CROSSING UNDERPASS (80%) - SQ. FT.	
TABLE 680 RAILROAD CROSSING UNDERPASS (80%) - SQ. FT.	
TABLE 681 RAILROAD CROSSING UNDERPASS (80%) - SQ. FT.	
TABLE 682 RAILROAD CROSSING UNDERPASS (80%) - SQ. FT.	
TABLE 683 RAILROAD CROSSING UNDERPASS (80%) - SQ. FT.	
TABLE 684 RAILROAD CROSSING UNDERPASS (80%) - SQ. FT.	
TABLE 685 RAILROAD CROSSING UNDERPASS (80%) - SQ. FT.	
TABLE 686 RAILROAD CROSSING UNDERPASS (80%) - SQ. FT.	
TABLE 687 RAILROAD CROSSING UNDERPASS (80%) - SQ. FT.	
TABLE 688 RAILROAD CROSSING UNDERPASS (80%) - SQ. FT.	
TABLE 689 RAILROAD CROSSING UNDERPASS (80%) - SQ. FT.	
TABLE 690 RAILROAD CROSSING UNDERPASS (80%) - SQ. FT.	
TABLE 691 RAILROAD CROSSING UNDERPASS (80%) - SQ. FT.	
TABLE 692 RAILROAD CROSSING UNDERPASS (80%) - SQ. FT.	
TABLE 693 RAILROAD CROSSING UNDERPASS (80%) - SQ. FT.	
TABLE 694 RAILROAD CROSSING UNDERPASS (80%) - SQ. FT.	
TABLE 695 RAILROAD CROSSING UNDERPASS (80%) - SQ. FT.	
TABLE 696 RAILROAD CROSSING UNDERPASS (80%) - SQ. FT.	
TABLE 697 RAILROAD CROSSING UNDERPASS (80%) - SQ. FT.	
TABLE 698 RAILROAD CROSSING UNDERPASS (80%) - SQ. FT.	
TABLE 699 RAILROAD CROSSING UNDERPASS (80%) - SQ. FT.	
TABLE 700 RAILROAD CROSSING UNDERPASS (80%) - SQ. FT.	

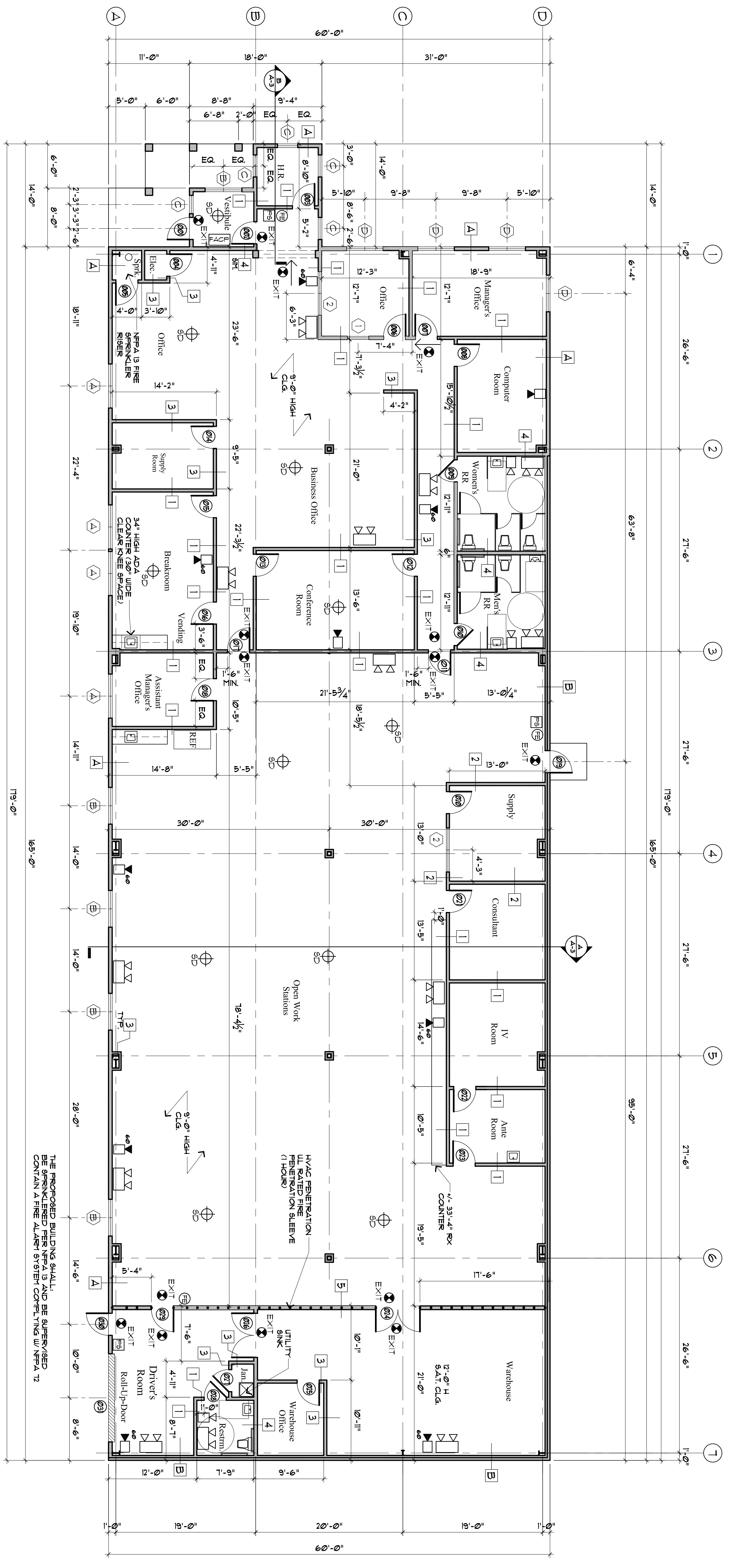
OCCUPANT LOAD - TABLE 101.2	
FIRE GROUP CLASSIFICATION	
TYPE OF CONSTRUCTION	
TABLE 101.5 BUILDING HEIGHT LIMITATION - SQ. FT.	
TABLE 101.6 STREET FRONTAGE HEIGHT LIMITATION (80%) - SQ. FT.	
TABLE 101.7 RAILROAD CROSSING OVERPASS (80%) - SQ. FT.	
TABLE 101.8 RAILROAD CROSSING UNDERPASS (80%) - SQ. FT.	
TABLE 101.9 RAILROAD CROSSING UNDERPASS (80%) - SQ. FT.	
TABLE 101.10 RAILROAD CROSSING UNDERPASS (80%) - SQ. FT.	
TABLE 101.11 RAILROAD CROSSING UNDERPASS (80%) - SQ. FT.	
TABLE 101.12 RAILROAD CROSSING UNDERPASS (80%) - SQ. FT.	
TABLE 101.13 RAILROAD CROSSING UNDERPASS (80%) - SQ. FT.	
TABLE 101.14 RAILROAD CROSSING UNDERPASS (80%) - SQ. FT.	
TABLE 101.15 RAILROAD CROSSING UNDERPASS (80%) - SQ. FT.	
TABLE 101.16 RAILROAD CROSSING UNDERPASS (80%) - SQ. FT.	
TABLE 101.17 RAILROAD CROSSING UNDERPASS (80%) - SQ. FT.	
TABLE 101.18 RAILROAD CROSSING UNDERPASS (80%) - SQ. FT.	
TABLE 101.19 RAILROAD CROSSING UNDERPASS (80%) - SQ. FT.	
TABLE 101.20 RAILROAD CROSSING UNDERPASS (80%) - SQ. FT.	
TABLE 101.21 RAILROAD CROSSING UNDERPASS (80%) - SQ. FT.	
TABLE 101.22 RAILROAD CROSSING UNDERPASS (80%) - SQ. FT.	
TABLE 101.23 RAILROAD CROSSING UNDERPASS (80%) - SQ. FT.	
TABLE 101.24 RAILROAD CROSSING UNDERPASS (80%) - SQ. FT.	
TABLE 101.25 RAILROAD CROSSING UNDERPASS (80%) - SQ. FT.	
TABLE 101.26 RAILROAD CROSSING UNDERPASS (80%) - SQ. FT.	
TABLE 101.27 RAILROAD CROSSING UNDERPASS (80%) - SQ. FT.	
TABLE 101.28 RAILROAD CROSSING UNDERPASS (80%) - SQ. FT.	
TABLE 101.29 RAILROAD CROSSING UNDERPASS (80%) - SQ. FT.	
TABLE 101.30 RAILROAD CROSSING UNDERPASS (80%) - SQ. FT.	
TABLE 101.31 RAILROAD CROSSING UNDERPASS (80%) - SQ. FT.	
TABLE 101.32 RAILROAD CROSSING UNDERPASS (80%) - SQ. FT.	
TABLE 101.33 RAILROAD CROSSING UNDERPASS (80%) - SQ. FT.	
TABLE 101.34 RAILROAD CROSSING UNDERPASS (80%) - SQ. FT.	
TABLE 101.35 RAILROAD CROSSING UNDERPASS (80%) - SQ. FT.	
TABLE 101.36 RAILROAD CROSSING UNDERPASS (80%) - SQ. FT.	
TABLE 101.37 RAILROAD CROSSING UNDERPASS (80%) - SQ. FT.	
TABLE 101.38 RAILROAD CROSSING UNDERPASS (80%) - SQ. FT.	
TABLE 101.39 RAILROAD CROSSING UNDERPASS (80%) - SQ. FT.	
TABLE 101.40 RAILROAD CROSSING UNDERPASS (80%) - SQ. FT.	
TABLE 101.41 RAILROAD CROSSING UNDERPASS (80%) - SQ. FT.	
TABLE 101.42 RAILROAD CROSSING UNDERPASS (80%) - SQ. FT.	
TABLE 101.43 RAILROAD CROSSING UNDERPASS (80%) - SQ. FT.	
TABLE 101.44 RAILROAD CROSSING UNDERPASS (80%) - SQ. FT.	
TABLE 101.45 RAILROAD CROSSING UNDERPASS (80%) - SQ. FT.	
TABLE 101.46 RAILROAD CROSSING UNDERPASS (80%) - SQ. FT.	
TABLE 101.47 RAILROAD CROSSING UNDERPASS (80%) - SQ. FT.	
TABLE 101.48 RAILROAD CROSSING UNDERPASS (80%) - SQ. FT.	
TABLE 101.49 RAILROAD CROSSING UNDERPASS (80%) - SQ. FT.	
TABLE 101.50 RAILROAD CROSSING UNDERPASS (80%) - SQ. FT.	



EXTERIOR WALL DETAILS
SCALE: 1/8" = 1'-0"

INTERIOR WALL DETAILS
SCALE: 1/8" = 1'-0"

[Symbol]	EXISTING WALL TO REMAIN
[Symbol]	PROPOSED GUM WALL
[Symbol]	PROPOSED FIRE RATED WALL
[Symbol]	EMERGENCY BACKUP LIGHT
[Symbol]	EXIT LIGHT
[Symbol]	SMOKE DETECTOR
[Symbol]	HEAT DETECTOR
[Symbol]	HORN/STROBE
[Symbol]	STROBE
[Symbol]	FIRE EXTINGUISHER
[Symbol]	PULL STATION
[Symbol]	FIRE ALARM CONTROL PANEL



THE PROPOSED BUILDING SHALL BE SPRINKLERED PER NFPA 13 AND BE SUPERVISED CONTAIN A FIRE ALARM SYSTEM COMPLYING W/ NFPA 72

FIRST FLOOR PLAN

PROJECT:	McAlister Farm
DATE:	June 13, 2005
REVISIONS:	
CHECKED BY:	PAH & BJB
DRAWN BY:	

PROJECT: **McALISTER FARM**
LOT #6 McALISTER FARM RD.
PORTLAND, MAINE

100 Commercial Street
Suite 205
Portland, ME 04101
Phone: 207.748.9277
Fax: 207.773.8951
E-mail: info@mmma-architects.com
Web: www.mmma-architects.com

M A R K MUELLER ARCHITECTS A.I.A.

© COPYRIGHT
MARK MUELLER ARCHITECTS

REGISTERED ARCHITECT
STATE OF MAINE
NO. 00372