

Revisions:

**arkinetics**  
 architects + urbanists  
 Architecture • Planning • Interiors • Preservation • Urban Design  
 www.arkinetics.com  
 Lorain Office  
 201 1/2 Fifth Street  
 Lorain, OH 44052  
 P: 440.246.3100  
 F: 440.246.5017  
 Cleveland Office  
 3723 Pearl Road  
 Cleveland, OH 44109  
 P: 216.748.7800  
 F: 216.748.1300

Project:

A Renovation For:  
**Irving Oil Marketing**  
 Store #7017  
 270 Riverside Street  
 Portland, ME 04103-1040

**arkinetics** Project #: 12025.07

Drawing Title  
**PLUMBING PLAN**

Date of Issue:  
 Plan Review **08/28/12**

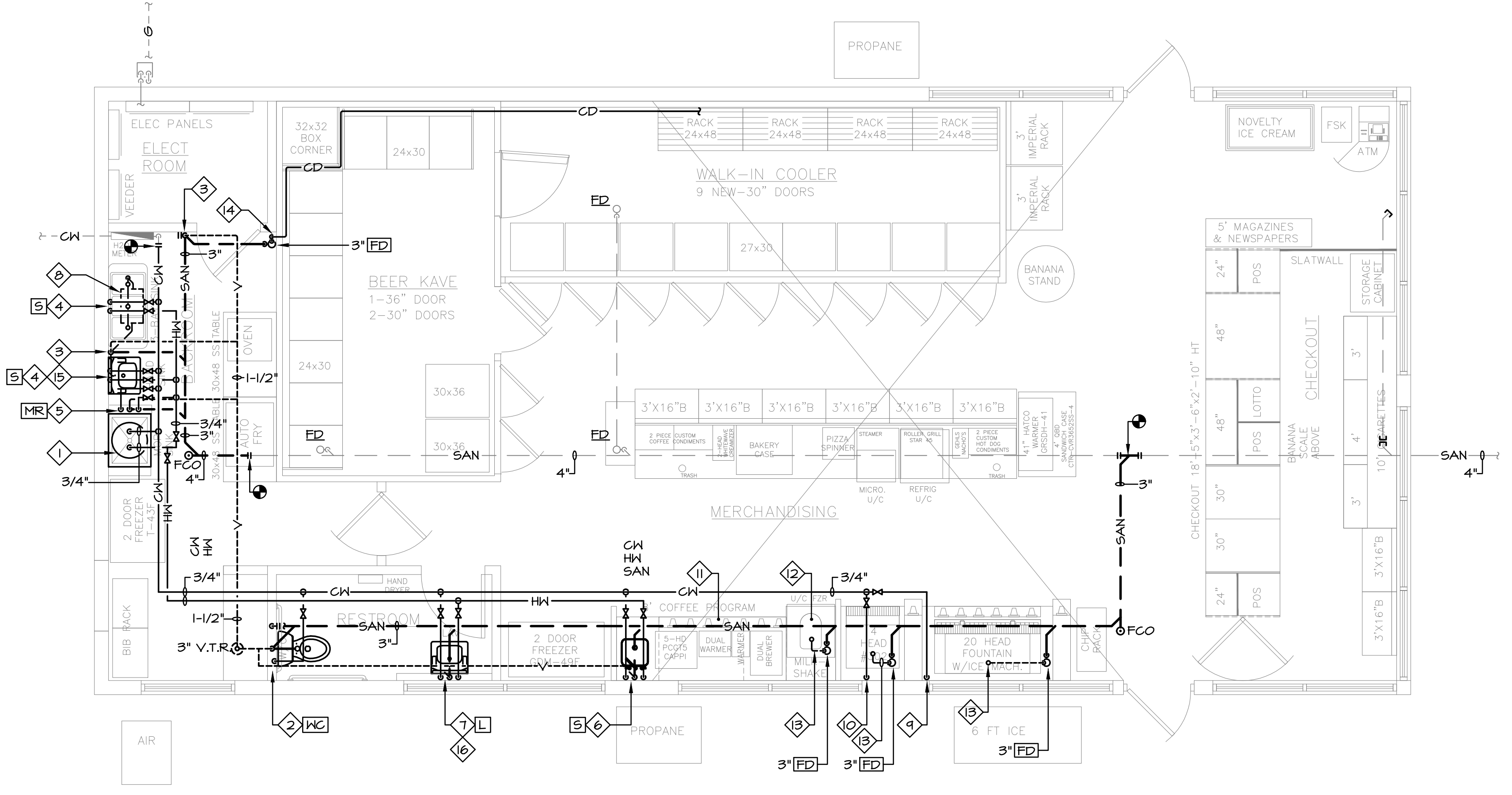
Sheet #: **P-102**

**GENERAL NOTES**

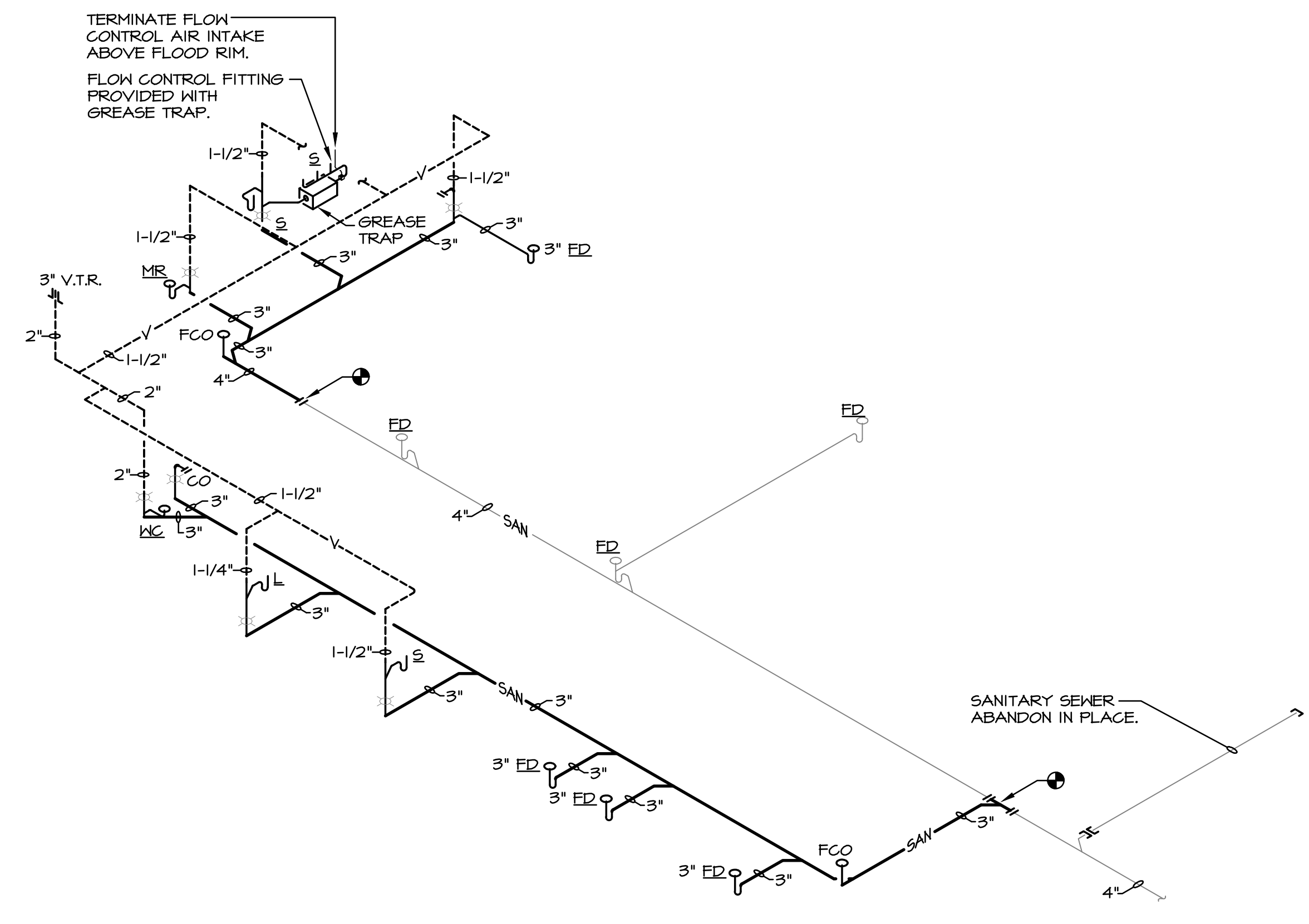
- CONDUCT FIELD SURVEY OF EXISTING CONDITIONS PRIOR TO SUBMISSION OF BID AND START OF WORK. NO ADDITIONAL PAYMENTS WILL BE MADE ON CLAIMS THAT ARISE FROM LACK OF KNOWLEDGE OF EXISTING CONDITIONS.
- COORDINATE SCHEDULE OF WORK REQUIRED IN OCCUPIED AND OPERATING AREAS WITH OWNER PRIOR TO STARTING SUCH WORK.
- SCHEDULE UTILITY SERVICE SHUTDOWNS REQUIRED FOR NEW CONSTRUCTION WITH OWNER AND GENERAL TRADES PRIOR TO SHUTTING DOWN SYSTEMS. GIVE ONE WEEK ADVANCE NOTICE.
- REMOVE AND REPLACE EXISTING CEILING TO ACCOMMODATE NEW WORK. REPLACE DAMAGED CEILING TILES WITH NEW.
- CUT FLOOR, WALL, AND CEILING CONSTRUCTION FOR PENETRATIONS TO ACCOMMODATE NEW WORK. COORDINATE WITH GENERAL TRADES. PATCH CONSTRUCTION TO MATCH, OR TO SATISFACTION OF ARCHITECT AND OWNER.
- COORDINATE ROUTING OF NEW PIPING WITH EXISTING BUILDING CONDITIONS AND WITH WORK OF OTHER TRADES. PROVIDE CHANGES IN LOCATION, DIRECTION, OFFSETS, AS MAY BE REQUIRED, WHETHER SPECIFICALLY INDICATED OR NOT, AND AT NO ADDITIONAL COST TO THE OWNER.
- ALL WORK TO BE COMPLETED IN ACCORDANCE WITH THE LOCAL BUILDING CODE AND AUTHORITY HAVING JURISDICTION.
- ALL FOUNTAIN STATIONS, FROSTER, COFFEE MAKERS AND ICE MACHINES SHALL BE PROVIDED WITH SMALL EQUIPMENT BACKFLOW PREVENTERS AND IN-LINE FILTERS AND SHALL CONFORM TO ASSE 1022.
- ALL FIXTURES SHALL BE PROVIDED WITH SHUT-OFF BALL VALVES ON SUPPLY LINES.
- ALL PUBLIC HAND WASHING SINKS SHALL BE SUPPLIED WITH TEMPERED WATER WITH AN APPROVED WATER TEMPERATURE LIMITING DEVICE THAT CONFORMS TO ASSE 1020.
- PLUMBING WORK SHALL BE COMPLETED BY AN INDIVIDUAL OR BUSINESS THAT IS LICENSED BY THE STATE CONSTRUCTION INDUSTRY LICENSING BOARD.
- PROVIDE FUNNEL ON FLOOR DRAINS THAT RECEIVE CONDENSATE.

**PLAN NOTES**

- WATER HEATER MOUNTED ABOVE MOP RECEPTOR. SEE THIS SHEET FOR WATER HEATER DETAIL AND SCHEDULE.
- 3" SANITARY, 1/2" COLD WATER DOWN AND 2" VENT UP IN HALL TO SERVE NEW PRESSURE ASSISTED WATER CLOSET.
- 3" SANITARY DOWN AND 1-1/2" VENT UP.
- 1/2" HOT & COLD WATER DOWN TO SERVE FIXTURES.
- 3" SANITARY, 1/2" HOT & COLD WATER DOWN AND 1-1/2" VENT UP IN WALL.
- 1-1/2" SANITARY, 1/2" HOT & COLD WATER DOWN AND 1-1/2" VENT UP IN WALL.
- 1-1/4" SANITARY, 1/2" HOT & COLD WATER DOWN AND 1-1/4" VENT UP IN WALL.
- PROVIDE NEW GREASE TRAP WITH 30 POUND GREASE CAPACITY ON FLOOR BEHIND WALL. 2" FIXTURE DRAINS TO SLEEVE THROUGH WALL. CONFORM TO PDI 6101 AND ASME A112.14.3.
- 20-HEAD FOUNTAIN: 3/4" COLD WATER DOWN IN WALL, PROVIDE MANIFOLD WITH (7) 1/2" BALL VALVES, 6 FOR FILTERED AND 1 FOR DOMESTIC. FILTERED WATER - 5 FOR FOUNTAIN, 1 FOR FROSTER, AND 1 FOR ICE MACHINE. IN-LINE BACKFLOW PREVENTER PROVIDED BY SUPPLIER.
- FROSTER: 3/4" COLD WATER DOWN IN WALL, PROVIDE (2) 1/2" BALL VALVES (1-DOMESTIC & 1-FILTERED). IN-LINE BACKFLOW PREVENTER PROVIDED BY PLUMBER.
- COFFEE PROGRAM: PROVIDED WITH 3/8" STUB OUT FOR FILTERED WATER BY OTHERS AND (5) 1/2" X 3/8" BALL VALVES WITH FEMALE THREADS. EQUIPMENT BACKFLOW ON FILTERED WATER LINE PROVIDED BY EQUIPMENT SUPPLIER.
- MSM: PROVIDED WITH 1/4" BRAIDED FLEXIBLE STUB OUT FOR FILTERED WATER BY OTHERS. IN-LINE BACKFLOW PREVENTER PROVIDED BY PLUMBER.
- ROUTE EQUIPMENT DRAIN BELOW AND SAFE-WASTE.
- CONDENSATE DRAIN PIPING SLEEVED AND SEALED THROUGH WALL OF BEER KAVE. SAFE-WASTE ABOVE FLOOR DRAIN.
- CONTRACTOR TO PROVIDE SELF-CLOSING METERING FAUCET FOR WALL MOUNTED HAND SINK.
- CONTRACTOR TO PROVIDE SELF-CLOSING METERING FAUCET FOR LAVATORY IN RESTROOM. PROVIDE CHICAGO FAUCET 3400-TCP OR APPROVED EQUAL.

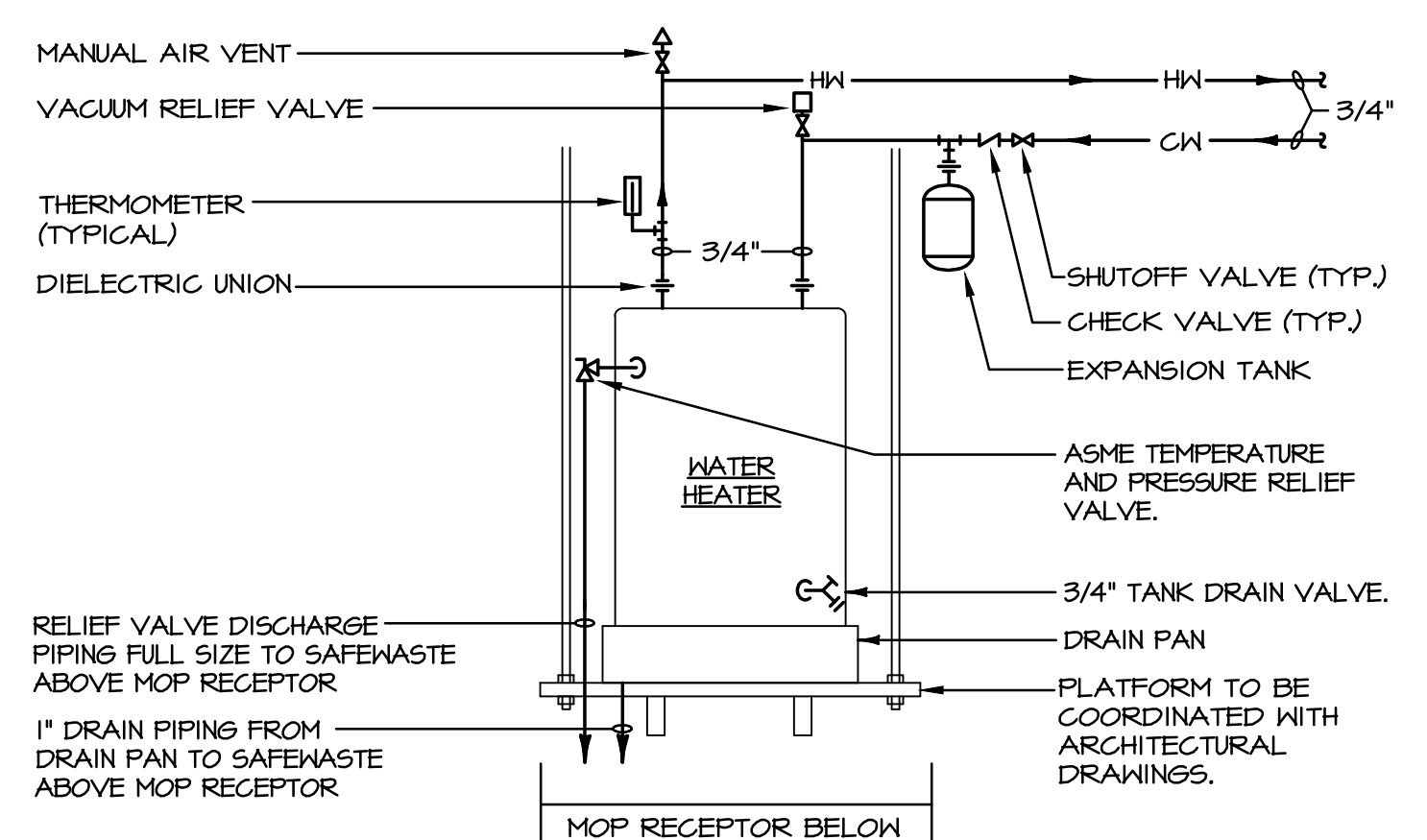


**PLUMBING PLAN**  
 SCALE: 1/4" = 1'-0"



**SANITARY STACK DIAGRAM**  
 NO SCALE

MARK	MANUFACTURER	MODEL	FUEL	KW INPUT	STORAGE CAPACITY (gallons)	FINAL TEMPERATURE (degrees F)	RECOVERY GPH	TEMPERATURE RISE (degrees F)	VOLTAGE	EXPANSION TANK	REMARKS
EWH	A.O. SMITH	DEL-40	ELECTRIC	UPPER 4.5 LOWER 4.5	40	120	46	80	240V-1PH	AMTROL MODEL ST-12	SIMULTANEOUS ELEMENT OPERATION



**WATER HEATER DETAIL**  
 NO SCALE

ITEM	DESCRIPTION	CONNECTION			
		HW	CW	WASTE	VENT
WC	WATER CLOSET (TANK TYPE)	—	1/2"	3"	2"
L	LAVATORY	1/2"	1/2"	1-1/4"	1-1/4"
S	WALLHUNG SINK	1/2"	1/2"	1-1/2"	1-1/2"
S	COUNTERTOP SINK	1/2"	1/2"	1-1/2"	1-1/2"
S	THREE COMPARTMENT SINK	1/2"	1/2"	(3) 2"	1-1/2"
MR	MOP RECEPTOR	1/2"	1/2"	3"	1-1/2"

33851 Curtis Blvd., 216  
 Eastlake, OH 44035  
 T 440.953.8780  
 F 440.953.1289  
 www.techni.com



cleveland | columbus