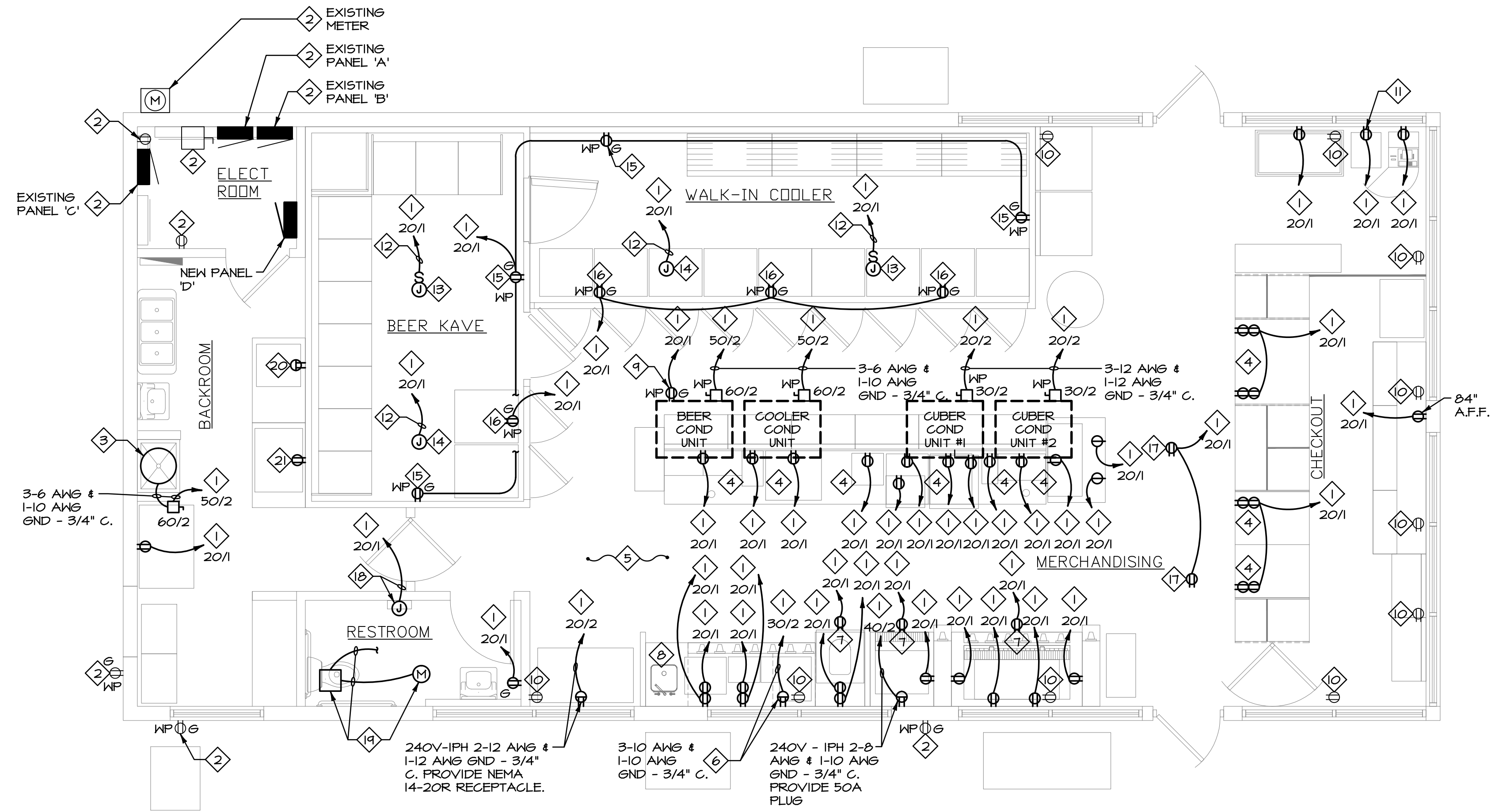


GENERAL NOTES

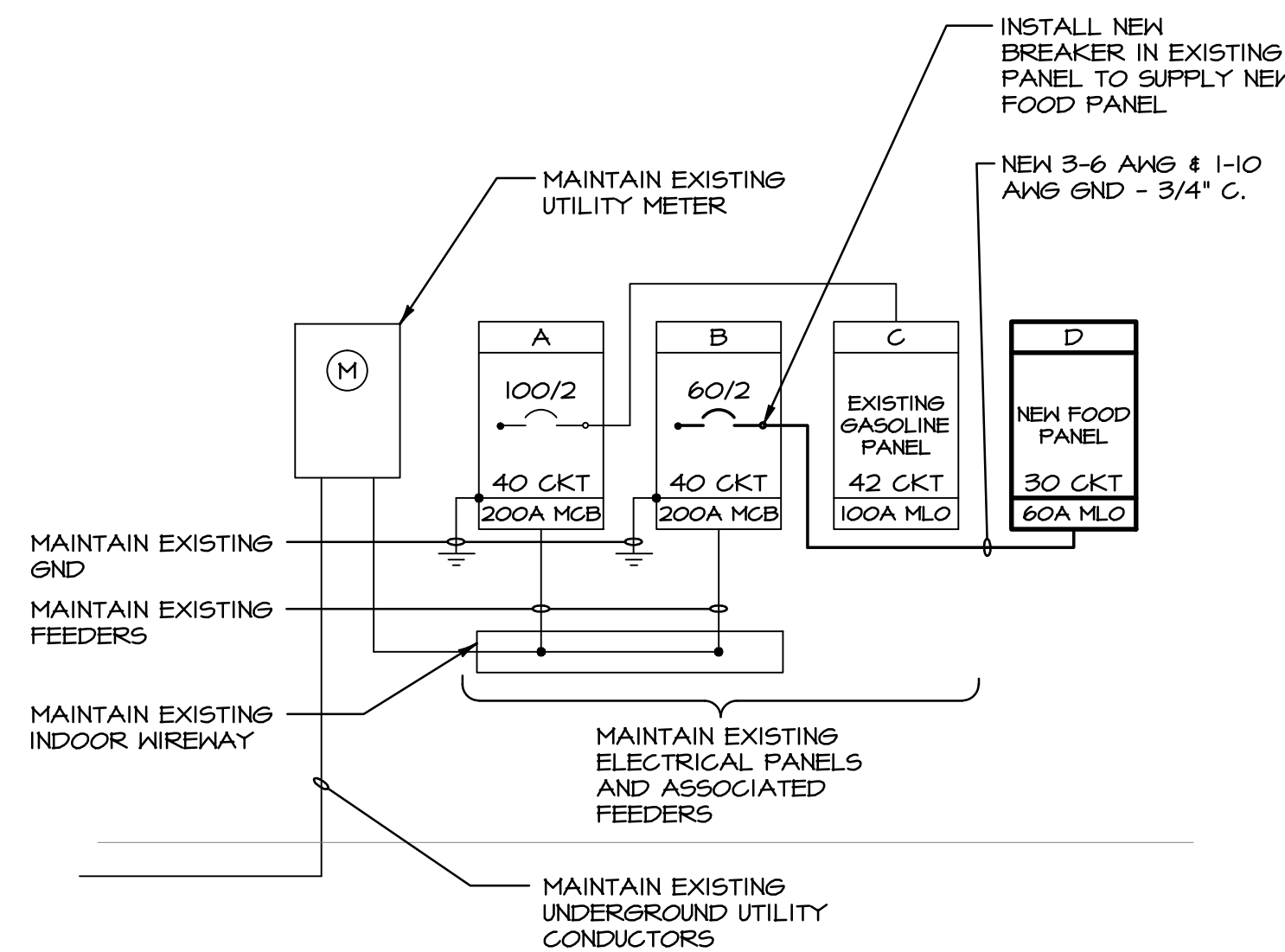
- A. THIS CONTRACTOR SHALL COORDINATE INSTALLATION OF AND MOUNTING OF ALL DUPLEX RECEPTACLES, TELEPHONE, DATA, OUTLETS, ETC., WITH ROOM ELEVATIONS, FIELD COORDINATION, AND ALL MILLWORK DRAWING BEFORE ROUGH-IN.
- B. THIS CONTRACTOR SHALL COORDINATE ALL FLOOR OUTLETS WITH FURNITURE PLAN LAYOUTS BEFORE ROUGH-IN. FINAL LOCATIONS SHALL BE APPROVED BY THE ARCHITECT AND COORDINATED IN THE FIELD. OBTAIN FURNITURE PLANS FROM ARCHITECT OR INTERIOR SPACE PLANNER.
- C. AN EFFORT HAS BEEN MADE TO IDENTIFY THE MAJOR LOADS BEING RE-CIRCUITED FROM THE EXISTING PANELS. THE CONTRACTOR IS RESPONSIBLE TO FIELD VERIFY AND RECONNECT ALL REMAINING EXISTING LOADS AS NECESSARY. REUSE EXISTING CIRCUIT BREAKERS AS APPLICABLE.
- D. ELECTRICAL WORK SHALL BE COMPLETED BY AN INDIVIDUAL OR BUSINESS THAT IS LICENSED IN THE STATE OF MAINE AS REQUIRED BY STATE AND LOCAL ORDINANCES.
- E. UPON COMPLETION OF CONSTRUCTION - E.C. SHALL PROVIDE NEW TYPEWRITTEN PANEL DIRECTORY FOR EXISTING PANELS, INDICATING ALL ACTIVELY USED AND SPARE CIRCUITS.
- F. PANEL DIRECTORIES ARE REQUIRED TO BE UPDATED BY THE ELECTRICAL CONTRACTOR PRIOR TO OBTAINING FINAL OCCUPANCY. BECAUSE OF THE EXTENT OF THE REMODEL AND THE AMOUNT OF EXISTING BRANCH CIRCUIT WIRING TO BE REUSED, ACCURATE PANEL DIRECTORIES CANNOT BE DETERMINED BY THE ENGINEER. THE ELECTRICAL CONTRACTOR IS RESPONSIBLE TO TRACE EXISTING BRANCH CIRCUIT WIRING, UPDATE THE PANEL DIRECTORIES IN THE FIELD, AND MEASURE LOAD READINGS ON THE PANELS TO ENSURE THAT NO PANEL SERVING THE SPACE IS OVERLOADED.

PLAN NOTES

- 1 REUSE EXISTING CIRCUIT IN PANEL SPACE MADE AVAILABLE BY REMODELING WORK. PROVIDE NEW CIRCUIT BREAKERS IN THE EXISTING AND NEW PANELS AS NECESSARY AND INSTALL NEW BRANCH CIRCUIT WIRING TO LOAD. CIRCUIT BREAKER SIZE SHOWN ON HOMERUN. BRANCH CIRCUITING SHOWN MAY BE COMBINED OR ADJUSTED IN THE FIELD AS REQUIRED BY THE ELECTRICAL CONTRACTOR TO PERMIT THE NEW WORK TO BE INSTALLED WITHOUT THE FURTHER ADDITION OF PANELBOARDS.
- 2 EXISTING TO REMAIN.
- 3 NEW ELECTRIC WATER HEATER. 240V, 1 PHASE, 9.0 KW.
- 4 MOUNT RECEPTACLE IN CASEWORK.
- 5 PROVIDE GFCI PROTECTION FOR PERSONNEL FOR 120 VOLT RECEPTACLE CIRCUITS IN KITCHENS, FOOD PREP AREAS, BEVERAGE DISPENSING AND FOR ANY DEVICE WITHIN 6' OF SINKS.
- 6 220V, 30A RECEPTACLE. ELECTRICAL CONTRACTOR TO VERIFY WIRE SIZE AND 2-POLE BREAKER SIZE SHOWN ON PLAN AND PLUG CONFIGURATION WITH FINAL EQUIPMENT SELECTION.
- 7 DROP RECEPTACLE FROM CEILING FOR SIGNAGE.
- 8 INSTALL ALL FOOD SERVICE AREA RECEPTACLES AND CIRCUITING WITHIN CABINETS.
- 9 WEATHER PROOF RECEPTACLE LOCATED ON ROOF FOR HVAC SERVICE REQUIREMENTS.
- 10 FLUSH MOUNT EXISTING RECEPTACLE IN NEW CEILING FOR WINDOW DISPLAYS.
- 11 MOUNT RECEPTACLE AT 84" A.F.F. FOR BUS LIGHT. COORDINATE LOCATION WITH OWNER PRIOR TO ROUGH-IN.
- 12 PROVIDE SEAL-OFF FITTINGS TO PREVENT THE CIRCULATION OF AIR INSIDE OF CONDUIT FROM THE COOLER AREA TO THE STORAGE AREA.
- 13 EVAPORATOR FAN CIRCUIT. WIRE THROUGH CONTROLLER TO THE FAN.
- 14 PROVIDE POWER TO DOOR HEATER AND LIGHTS.
- 15 MOUNT RECEPTACLE ON WALL 12" BELOW COOLER/BEER KAVE CEILING FOR SECURITY CAMERA.
- 16 MOUNT RECEPTACLE TO ACCESSIBLE CEILING IN COOLER/BEER KAVE FOR LOW VOLTAGE SIGNAGE. SEAL SLEEVE WITH POLY SILICON CAULKING TO PREVENT MOISTURE AND AIR FROM ENTERING AND DAMAGING THE TRANSFORMER AND LOW VOLTAGE WIRING.
- 17 FLUSH-MOUNT RECEPTACLE IN CEILING FOR MONITOR.
- 18 ELECTRIC HAND DRYER. 1.5KW 120V. VERIFY REQUIREMENTS WITH EQUIPMENT PROVIDED.
- 19 WIRE EXHAUST FAN TO ROOM LIGHTING CIRCUIT. EXHAUST FAN SHALL BE CONTROLLED BY CEILING-MOUNTED MOTION DETECTOR.
- 20 RELOCATED EXISTING OVEN. INSTALL NEW ELECTRICAL CONNECTION TO MATCH EXISTING. REUSE EXISTING BREAKER IN PANEL, AND REUSE AND EXTEND EXISTING BRANCH CIRCUIT WIRING WHERE FOUND SERVICEABLE TO NEW LOCATION.
- 21 RELOCATED EXISTING AUTO FRY UNIT. INSTALL NEW ELECTRICAL CONNECTION TO MATCH EXISTING. REUSE EXISTING BREAKER IN PANEL, AND REUSE AND EXTEND EXISTING BRANCH CIRCUIT WIRING WHERE FOUND SERVICEABLE TO NEW LOCATION.



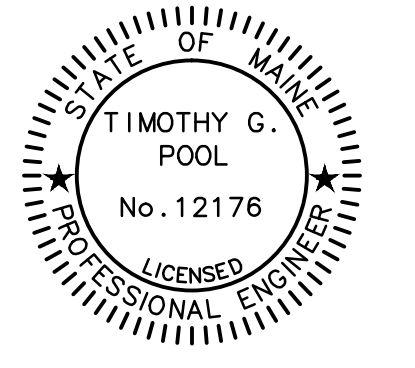
POWER PLAN
SCALE: 1/4" = 1'-0"



ONE LINE DIAGRAM
120/240V, 1PH, 3W SCALE: NONE

LOAD CALCULATION ESTIMATES			
ITEM DESCRIPTION	TOTAL SQ FT	WATT/SQ FT	TOTAL DEMAND (KW)
LIGHTING	1661	3.5	5.8
RECEPTACLES	1661	1.5	2.5
HVAC	1661	5.0	8.3
MERCHANDISING EQUIP	N/A	N/A	20.0
REFRIGERATION EQUIP	N/A	N/A	12.0
GASOLINE PUMPS	N/A	N/A	0.0
OUTDOOR LIGHTING	N/A	N/A	0.0
WATER HEATER	N/A	N/A	9.0
TOTAL STORE DEMAND	N/A	N/A	73.6

TOTAL STORE AMPS: 307



Revisions:

arkinetics
architects + urbanists
Architecture • Planning • Interiors • Preservation • Urban Design
www.arkinetics.com
Lorain Office
201 1/2 Fifth Street
Lorain, OH 44052
P: 440.246.3100
F: 440.246.5017
Cleveland Office
3723 Pearl Road
Cleveland, OH 44109
P: 216.748.7800
F: 216.748.1300

Project:

A Renovation For:
Irving Oil Marketing
Store #7017
270 Riverside Street
Portland, ME 04103-1040

arkinetics Project #: 12025.07

Drawing Title

POWER PLAN

Date of Issue:

Plan Review 08/28/12

© **arkinetics**
Sheet #:

E-103



33851 Curtis Blvd., 216
Eastlake, OH 44035
T 440.953.8760
F 440.953.1289
www.technl.com
cleveland | columbus