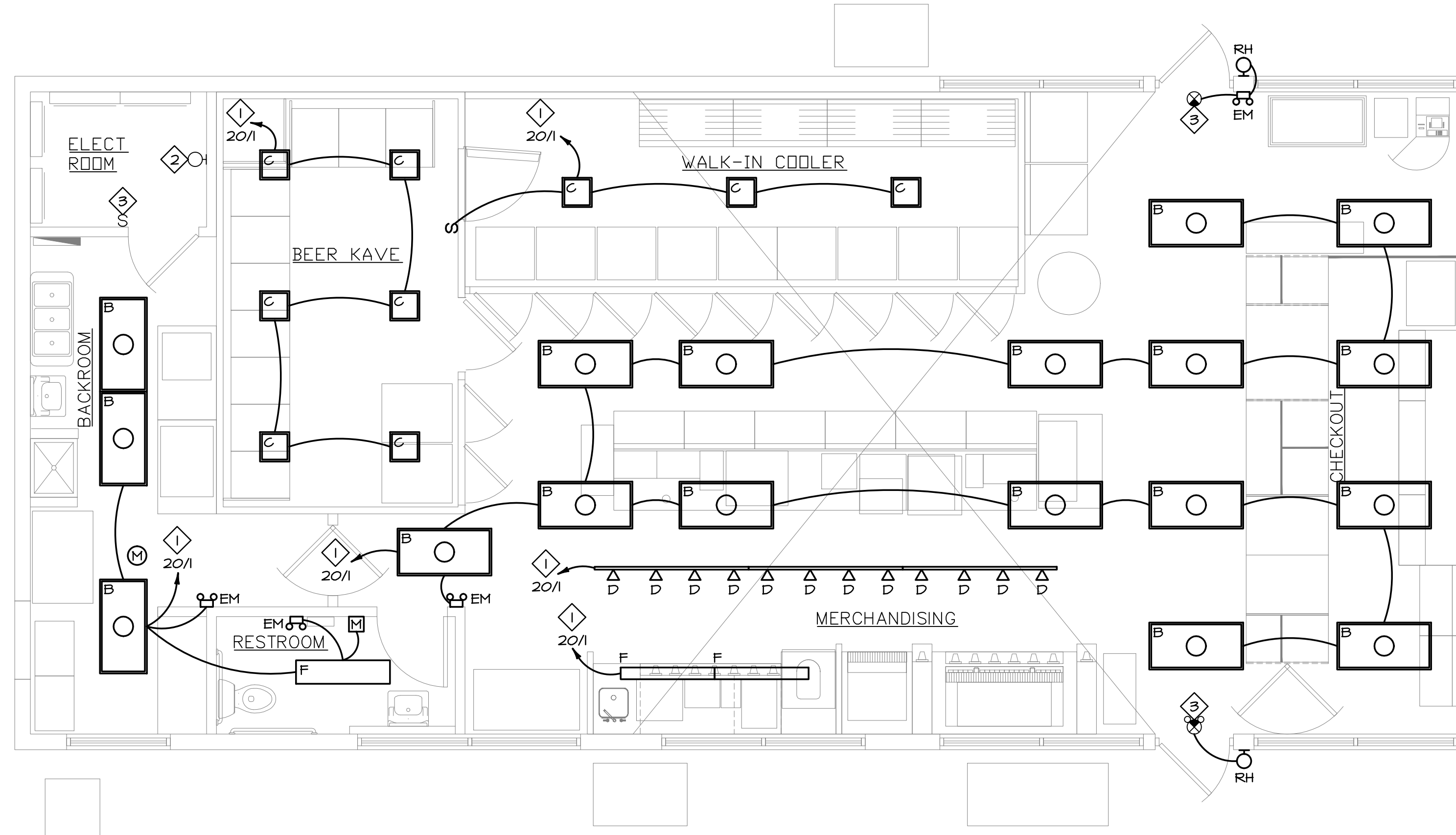


**GENERAL NOTES**

- A. ALL LIGHTING FIXTURE LOCATIONS INDICATED ON THIS DRAWING SHALL BE SUPERSEDED BY THE ARCHITECTURAL REFLECTED CEILING PLAN FOR THE AREA. ELECTRICAL CONTRACTOR SHALL REVIEW ARCHITECTURAL DRAWINGS FOR EXACT LOCATIONS OF LIGHTING FIXTURES.
- B. ALL WALL MOUNTED LIGHTING FIXTURE LOCATIONS INDICATED ON THIS DRAWING SHALL HAVE THE MOUNTING HEIGHTS VERIFIED WITH THE ARCHITECT BEFORE ROUGH-IN.
- C. EMERGENCY LIGHTING BATTERY PACKS AND THE EXIT SIGNS SHALL BE WIRED TO AN ALWAYS 'ON' POWER SOURCE IN THE ROOM WHICH THEY SERVE.
- D. AN EFFORT HAS BEEN MADE TO IDENTIFY THE MAJOR LOADS BEING RE-CIRCUITED FROM THE EXISTING PANELS. THE CONTRACTOR IS RESPONSIBLE TO FIELD VERIFY AND RECONNECT ALL REMAINING EXISTING LOADS FROM THE EXISTING PANELS AS NECESSARY, REUSE EXISTING CIRCUIT BREAKERS AS APPLICABLE.
- E. MAINTAIN BUILDING EXISTING EXIT SIGNAGE AND EMERGENCY BATTERY PACKS.
- F. PROVIDE PROTECTIVE SLEEVES OR SHATTERPROOF LAMPS IN ANY FOOD PREP AREAS.
- G. ELECTRICAL WORK SHALL BE COMPLETED BY AN INDIVIDUAL OR BUSINESS THAT IS LICENSED IN THE STATE OF MAINE AS REQUIRED BY STATE AND LOCAL ORDINANCES.
- H. UPON COMPLETION OF CONSTRUCTION - E.G. SHALL PROVIDE NEW TYPEWRITTEN PANEL DIRECTORY FOR EXISTING PANELS, INDICATING ALL ACTIVELY USED AND SPARE CIRCUITS.
- I. ASHRAE 90.1 COMPLIANCE - FACILITY IS A 24-HOUR FACILITY, MAKING IT EXEMPT FROM ASHRAE 90.1 REQUIREMENTS.
- J. FOOD SERVICES AREA LIGHTING ILLUMINATION HAS BEEN CALCULATED TO EXCEED 50 MAINTAINED FOOT CANDLES ON THE FOOD PREPARATION SURFACES. STORAGE AND COOLERS AREA LIGHTING ILLUMINATION HAS BEEN CALCULATED TO EXCEED 10 MAINTAINED FOOT CANDLES AT 30" A.F.F. BACKROOMS, TOILET ROOMS, AND MERCHANDISE AREA LIGHTING ILLUMINATION HAS BEEN CALCULATED TO EXCEED 20 MAINTAINED FOOT CANDLES AT 30" A.F.F.
- K. PANEL DIRECTORIES ARE REQUIRED TO BE UPDATED BY THE ELECTRICAL CONTRACTOR PRIOR TO OBTAINING FINAL OCCUPANCY. BECAUSE OF THE EXTENT OF THE REMODEL AND THE AMOUNT OF EXISTING BRANCH CIRCUIT WIRING TO BE REUSED, ACCURATE PANEL DIRECTORIES CANNOT BE DETERMINED BY THE ENGINEER. THE ELECTRICAL CONTRACTOR IS RESPONSIBLE TO TRACE EXISTING BRANCH CIRCUIT WIRING, UPDATE THE PANEL DIRECTORIES IN THE FIELD, AND MEASURE LOAD READINGS ON THE PANELS TO ENSURE THAT NO PANEL SERVING THE SPACE IS OVERLOADED.

**PLAN NOTES**

- ① REUSE EXISTING CIRCUIT IN PANEL SPACE MADE AVAILABLE BY REMODELING WORK. PROVIDE NEW CIRCUIT BREAKERS IN THE EXISTING PANELS AS NECESSARY AND INSTALL NEW BRANCH CIRCUIT WIRING TO LOAD. CIRCUIT BREAKER SIZE SHOWN ON HOMERUN. BRANCH CIRCUITING SHOWN MAY BE COMBINED OR ADJUSTED IN THE FIELD AS REQUIRED BY THE ELECTRICAL CONTRACTOR TO PERMIT THE NEW WORK TO BE INSTALLED WITHOUT THE ADDITION OF PANELBOARDS.
- ② EXISTING LUMINAIRE TO REMAIN. CLEAN AND RELAMP. MAINTAIN LOCAL CONTROLS.
- ③ MAINTAIN EXISTING DEVICE AND ASSOCIATED BRANCH CIRCUIT WIRING.



**LIGHTING PLAN**  
SCALE: 1/4" = 1'-0"

LUMINAIRE SCHEDULE									
SYMBOL	TYPE	LUMINAIRE		LAMP TYPE	DESCRIPTION	CEILING TYPE	MANUFACTURER	CATALOG NUMBER	REMARKS
		WATTS	VOLTS						
	B	96	120	(THREE) 32 WATT T-8	2'x4' RECESSED, 3-LAMP, LENSED TROFFER WITH PRISMATIC ACRYLIC LENS. 3-LAMP ELECTRONIC BALLAST.	GRID	LITHONIA OR APPROVED EQUAL	2SP8 G 3 32 A 12125 120 1/3 GEB	
	C	84	120	(TWO) 42W CFL	12"X12" DIE-CAST ALUMINUM LUMINAIRE WITH COMPACT FLUORESCENT LAMPING, POWDER-COAT FINISH AND POLYCARBONATE PRISMATIC LENS	SURFACE	EELP	VR5-2x42CF-MT	
	D	150	120	50W MR16	SINGLE CIRCUIT LOW VOLTAGE TRACK WITH QUANTITY OF HEADS AS SHOWN ON PLANS. COLOR TO BE WHITE	GRID	LITHONIA OR APPROVED EQUAL	LTC-GMBR-MR16-VH	AT COFFEE ARCH
	F	96	120	(THREE) 32 WATT T-8	4' FLUORESCENT DAMP LOCATION ENCLOSED INDUSTRIAL FIBERGLASS HOUSING AND ACRYLIC LENS	SURFACE	LITHONIA OR APPROVED EQUAL	DM 332 120 1/3GEB	
	EM	6	120/277	(TWO) 9W KRYPTON	WALL MOUNTED 2 HEAD EMERGENCY LIGHTING UNIT WITH BATTERY AND CHARGER AND REMOTE CAPACITY.	NA	LITHONIA OR APPROVED EQUAL	ELM627	WIRE AHEAD OF LOCAL SWITCHING OR TO DEDICATED NIGHT LIGHT CIRCUIT
	RH	12	120/277	(TWO) 6W XENON	REMOTE EMERGENCY LIGHTING FIXTURE WITH TWO HEADS.	NA	LITHONIA OR APPROVED EQUAL	ELA AFNR DB	WIRE AHEAD OF LOCAL SWITCHING OR TO DEDICATED NIGHT LIGHT CIRCUIT

Revisions:


**arkinetics**  
architects + urbanists  
Architecture • Planning • Interiors • Preservation • Urban Design  
www.arkinetics.com

Cleveland Office  
3723 Pearl Road  
Cleveland, OH 44109  
P: 216.746.7800  
F: 216.749.1300

Lorain Office  
201 1/2 Fifth Street  
Lorain, OH 44052  
P: 440.246.3100  
F: 440.246.5017

Project:

A Renovation For:  
**Irving Oil Marketing**  
Store #7017  
270 Riverside Street  
Portland, ME 04103-1040

**arkinetics** Project #: 12025.07

Drawing Title  
LIGHTING PLAN

Date of Issue:  
Plan Review 08/28/12

E:\2012 Projects\12271 Circle K 7017 Portland ME\E-102.dwg, 8/28/2012 12:59:19 PM, chris