

## ELECTRICAL DEMOLITION NOTES

- ANY DEMOLITION INDICATED ON THE DRAWINGS IS SHOWN IN GENERAL TO INDICATE THE EXTENT OF DEMOLITION AND IS NOT TO BE CONSIDERED AS A RECORD DRAWING OF EXISTING CONDITIONS. ACCORDINGLY, THE CONTRACTOR SHALL BE RESPONSIBLE FOR COMPLETE DEMOLITION OF THE ELECTRICAL WORK INDICATED INCLUDING ANY BURIED ITEMS OR ANY EXISTING ITEMS NOT SHOWN ON THE DRAWINGS. BEFORE DEMOLITION, THE CONTRACTOR SHALL BE RESPONSIBLE TO APPROPRIATE FIELD TESTING TO DETERMINE THE NATURE OF THE EXISTING ELECTRICAL WORK TO BE DEMOLISHED TO PROTECT EXISTING WORK REMAINING IN PLACE AND TO PROTECT THE PUBLIC.
- REPAIR AND RESTORE TO ORIGINAL CONDITION ALL ITEMS OR PORTIONS OF ELECTRICAL WORK WHICH ARE NOT NOTED TO BE DEMOLISHED, BUT ARE DAMAGED BY WORK UNDER THIS CONTRACT. IT SHALL BE THE CONTRACTOR'S RESPONSIBILITY TO PROTECT AND RETAIN POWER TO ALL EXISTING ACTIVE EQUIPMENT WHICH SHALL REMAIN. ELECTRICAL CONTRACTOR SHALL RECONNECT ANY EQUIPMENT BEING DISTURBED BY THIS RENOVATION.
- WHERE WORK BY THE GENERAL CONTRACTOR (WALL REMOVAL, NEW OR RELOCATED WALL OPENING, ETC.) RESULTS IN THE REMOVAL, RELOCATION, OR REFEEDING OF ELECTRICAL DEVICES OR LIGHTING FIXTURES, THE ELECTRICAL CONTRACTOR SHALL DISCONNECT OR RECONNECT AS REQUIRED ALL ACTIVE DEVICES REMAINING ON THAT CIRCUIT.
- CONTRACTOR VERIFY ALL CIRCUITS IN EXISTING PANEL AFFECTED BY THIS ALTERATION. WHERE ADDITIONAL CIRCUITS ARE NEEDED, USE AVAILABLE SPARE BREAKERS IN THE PANEL. TIGHTEN ALL CONNECTIONS.
- DO NOT PROCEED WITH DEMOLITION WITHOUT WRITTEN AUTHORITY TO PROCEED. PROCEED WITH DEMOLITION IN A SYSTEMATIC MANNER AND COORDINATE WITH ALL TRADES INVOLVED. COORDINATE AND SEQUENCE DEMOLITION SO AS NOT TO CAUSE A SHUTDOWN OF OPERATION OF SURROUNDING AREAS.
- DISCONNECT OR SHUT OFF SERVICE TO AREAS WHERE ELECTRICAL WORK IS TO BE REMOVED. REMOVE ALL ELECTRICAL FIXTURES, EQUIPMENT, AND RELATED SWITCHES, OUTLETS, CONDUIT, AND WIRING WHICH ARE NOT A PART OF THE FINAL PROJECT IN ALL AREAS WHERE WORK OF THIS CONTRACT IS TO BE PERFORMED. ALL REMOVED EQUIPMENT SHALL BE DISPOSED OF BY THIS CONTRACTOR UNLESS DIRECTED TO DO OTHERWISE BY THE OWNER. REMOVE ALL CONDUIT WIRE, BOXES, AND FASTENING DEVICES, AS REQUIRED TO AVOID ANY INTERFERENCE WITH NEW INSTALLATION. ABANDONED CONDUIT TO BE CAPPED AT BOTH ENDS. REMOVE EXISTING WIRE NO LONGER IN USE FROM DEVICE LOCATION BACK TO PANEL.
- ARRANGE TIMING OF SHUTDOWN PERIODS OF ALL IN-SERVICE PANELS WITH OWNER OR HIS REPRESENTATIVE. DO NOT SHUTDOWN ANY UTILITY WITHOUT PRIOR WRITTEN APPROVAL.
- WHERE EXISTING CIRCUITS ARE INDICATED TO BE REUSED, CONTRACTOR TO USE SENSING MEASURING DEVICES TO VERIFY THAT CIRCUITS FEED PROJECT AREA OR ARE NOT IN USE.
- REMOVE WIRING DEVICES WITH ASSOCIATED CONDUIT WIRING INDICATED ON PLAN UNLESS OTHERWISE NOTED.

## GENERAL CONSTRUCTION NOTES

- OPEN WIRE AND OPEN CABLES INSTALLED WITHIN THE RETURN AIR CEILING SPACE SHALL BE PLENUM RATED LETTER CODE 'P' AND WILL BE LOW-SMOKE PRODUCING.
- ALL WIRE FOR POWER, LIGHTING AND CONTROL SYSTEMS SHALL BE 600VOLT THIN-THIN, 90° INSULATED AND SHALL BE COPPER. ALL WIRE FOR COMMUNICATIONS SYSTEMS SHALL BE COPPER.
- FIRE SEAL OPENINGS AROUND ALL CONDUIT PENETRATIONS. PENETRATIONS THRU FIRE RATED CONSTRUCTION SHALL BE SEALED WITH LISTED FIRE RATED MATERIALS.
- EMT CONDUIT SHALL BE RUN IN ALL CEILING SPACES. TYPE MC CABLE MAY ONLY BE INSTALLED WHERE CONCEALED WITHIN WALL SPACES OR CEILING SPACES. CONNECTORS SHALL EFFECTIVELY SEAL THE CONDUIT OPENINGS WHERE INSTALLED IN CEILING SPACES USED FOR AIR HANDLING PURPOSES.
- ALL ELECTRICAL EQUIPMENT SHALL BE U.L. LISTED OR LABELED.
- ALL WORK SHALL BE DONE IN STRICT ACCORDANCE WITH THE NATIONAL ELECTRICAL CODE, AND ALL LOCAL ORDINANCES.
- ALL EXISTING CIRCUITS IN THE SPACE THAT ARE EXISTING TO REMAIN SHALL BE TRACED WITH A CIRCUIT TESTER, RE-CIRCUITED TO THE NEW PANELS, AND PROPERLY IDENTIFIED ON A NEW PANEL DIRECTORY.
- REMOVE ALL BRANCH CIRCUIT WIRE SHOWN TO BE REMOVED ABOVE THE CEILING SPACE BACK TO THE FIRST JUNCTION BOX ON ALL DEVICES SHOWN TO BE REMOVED AS PART OF THIS PROJECT.
- BRANCH CIRCUIT WIRING IS DIAGRAMMATIC. PROVIDE NEW CIRCUIT BREAKERS IN SPACES WITHIN PANEL BOARDS SHOWN OR UTILIZE SPARES MADE AVAILABLE AFTER DEMOLITION PHASE TYPE TO MATCH EXISTING. PROVIDE TYPED ACCURATE PANEL BOARD DIRECTORIES FOR ALL PANELS NOTED.
- PROVIDE 'HAGR' TYPE CIRCUIT BREAKERS FOR ALL MECHANICAL EQUIPMENT.
- PROVIDE BRANCH CIRCUIT BREAKERS IN THE NEW PANELS AS REQUIRED TO RESUPPLY ALL EXISTING AND NEW STORE LOADS. FIELD VERIFY QUANTITY AND SIZE OF BRANCH BREAKERS REQUIRED AND RECONNECT AS REQUIRED.
- ALL UTILITY UPGRADE COSTS, MISCELLANEOUS FEES, AND COORDINATION IS THE RESPONSIBILITY OF THE ELECTRICAL CONTRACTOR.
- ALL NEW EQUIPMENT AND DEVICES SHALL BE AS APPROVED AND SPECIFIED BY CIRCLE K AND ITS AFFILIATES. ALL METHODS OF INSTALLATION SHALL COMPLY WITH CIRCLE K STANDARDS AND ALL WORK IS SUBJECT TO FINAL ACCEPTANCE BY CIRCLE K.
- THE SIZE OF THE EXISTING ELECTRICAL SERVICE AT THIS LOCATION MUST BE CONFIRMED BY THE E.C. DURING CONSTRUCTION. THE MINIMUM REQUIRED SERVICE SIZE IS 400 AMPS. IF THE EXISTING SERVICE IS LESS THAN 400 AMPS, THE ELECTRICAL CONTRACTOR SHALL UPGRADE THE SERVICE TO 400 AMPS MINIMUM AND PROVIDE UTILITY UPGRADE AND CONNECTION COSTS.

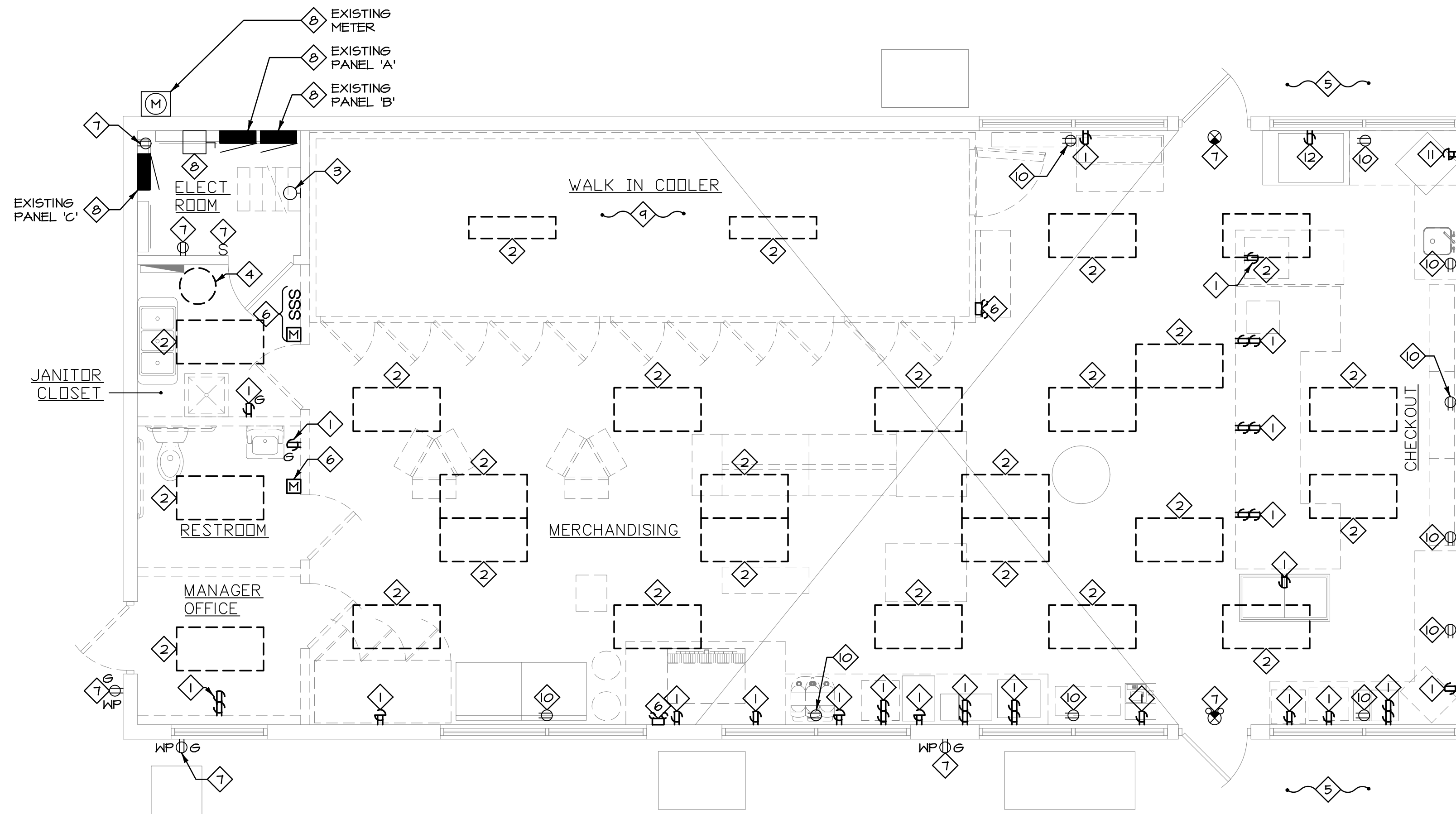
## ELECTRICAL SYMBOLS

- BRANCH CIRCUIT HOMERUN TO PANEL "A", CIRCUIT #3 AND #5. PROVIDE THE PROPER QUANTITY OF 12 AWG CONDUCTORS PLUS 1-12 AWG GND FOR THE CIRCUIT(S) INDICATED.
- SINGLE POLE SWITCH - MOUNTING AT 48" A.F.F.
- DUAL TECHNOLOGY MOTION SENSOR SWITCH - WALL MOUNTED AT 48" A.F.F. OR AS NOTED
- MOTION SENSOR SWITCH - CEILING MOUNTED
- SINGLE RECEPTACLE - MOUNTING AT 18" A.F.F. OR AS NOTED
- DUPLEX RECEPTACLE - MOUNTING AT 18" A.F.F. OR AS NOTED
- TWO DUPLEX RECEPTACLES MOUNTED IN A 2-GANG BOX - MOUNTING AT 18" A.F.F. OR AS NOTED
- DUPLEX RECEPTACLE - GROUND FAULT CIRCUIT INTERRUPTER
- GFCI TYPE DUPLEX RECEPTACLE IN WEATHERPROOF ENCLOSURE
- DUPLEX RECEPTACLE - MOUNTING AT 48" A.F.F. OR 6" ABOVE COUNTER
- SPECIAL PURPOSE OUTLET. VERIFY CONFIGURATION WITH EQUIPMENT PROVIDED.
- POWER POLE.
- COMBINATION SWITCH AND JUNCTION BOX - MOUNTING HEIGHT AND SIZE AS REQUIRED
- JUNCTION BOX - MOUNTING HEIGHT AND SIZE AS REQUIRED

- UNFUSED DISCONNECT SWITCH, 30 AMPERE, 3 POLE OR AS NOTED
- FUSED DISCONNECT SWITCH, 30 AMPERE, 3 POLE, 20 AMPERE FUSING OR AS NOTED
- PANELBOARD - 0 TO 150 VOLTS TO GROUND
- ONLINE REPRESENTATION OF A MOLDED CASE CIRCUIT BREAKER, SIZE AS NOTED
- ONLINE REPRESENTATION OF A FUSED SWITCH, SIZE AS NOTED
- ONLINE REPRESENTATION OF A METER
- EXIT SIGN - CEILING MOUNTED. SHADING INDICATES LIGHTED FACE. ARROW INDICATES CHEVRON DIRECTION INDICATION
- EMERGENCY BATTERY PACK - WALL MOUNTED
- PLAN NOTE TAG, REFER TO PLAN FOR DESCRIPTION
- A.F.F. ABOVE FINISHED FLOOR
- MGB MAIN CIRCUIT BREAKER
- MLO MAIN LUGS ONLY
- HEAVY LINE WEIGHT INDICATES THIS EQUIPMENT IS NEW UNLESS NOTED OTHERWISE
- LIGHT LINE WEIGHT INDICATES THIS EQUIPMENT IS EXISTING UNLESS NOTED OTHERWISE
- HEAVY DASHED LINE WEIGHT INDICATES THIS EQUIPMENT IS TO BE REMOVED UNLESS NOTED OTHERWISE

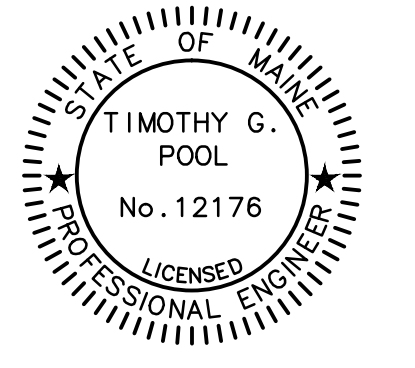
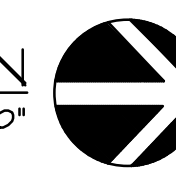
## PLAN NOTES

- REMOVE ALL EXISTING RECEPTACLES AND POWER FEEDERS IN AREA OF DEMOLITION THAT ARE NOT PART OF THE FINAL RENOVATION. REMOVE ALL CONDUIT AND WIRE BACK TO SOURCE.
- REMOVE EXISTING LUMINAIRE AND ASSOCIATED BRANCH CIRCUIT WIRING. MAINTAIN DOWNSTREAM LUMINAIRES THAT MAY BE AFFECTED BY THIS DEMOLITION.
- MAINTAIN EXISTING LUMINAIRE, ASSOCIATED CONTROLS, AND BRANCH CIRCUIT WIRING.
- EXISTING WATER HEATER TO BE REMOVED BY M.C. E.C. SHALL REMOVE ASSOCIATED EXISTING BRANCH CIRCUIT WIRING TO SOURCE.
- EXTERIOR SITE LIGHTING AND CANOPY LIGHTING IS EXISTING TO REMAIN, UNLESS OTHERWISE NOTED.
- REMOVE EXISTING DEVICE AND ASSOCIATED BRANCH CIRCUIT WIRING.
- MAINTAIN EXISTING DEVICE AND ASSOCIATED BRANCH CIRCUIT WIRING.
- EXISTING ELECTRICAL PANELS AND EQUIPMENT TO REMAIN. REFER TO ELECTRICAL DEMOLITION NOTE 4 AND GENERAL CONSTRUCTION NOTE 4.
- EXISTING WALK-IN COOLER/BEER CAVE TO BE REMOVED. E.C. TO REMOVE ASSOCIATED EXISTING DEVICES, LUMINAIRES, CONTROLS, AND BRANCH CIRCUIT WIRING.
- MAINTAIN EXISTING FLUSH-MOUNTED CEILING RECEPTACLE AND ASSOCIATED BRANCH CIRCUIT WIRING.
- EXISTING OVEN TO BE RELOCATED. REFER TO DRAWING E-103 FOR NEW LOCATION.
- EXISTING AUTO FRY UNIT TO BE RELOCATED. REFER TO DRAWING E-103 FOR NEW LOCATION.



## ELECTRICAL DEMOLITION PLAN

SCALE: 1/4" = 1'-0"



Revisions:

No.	Description

**arkinetics**  
architects + urbanists  
Architecture • Planning • Interiors • Preservation • Urban Design  
www.arkinetics.com  
Cleveland Office  
3723 Pearl Road  
Cleveland, OH 44109  
P: 216.748.7800  
F: 216.748.1300  
Lorain Office  
201 1/2 Fifth Street  
Lorain, OH 44052  
P: 440.246.3100  
F: 440.246.5017

Project:

A Renovation For:  
**Irving Oil Marketing**  
Store #7017  
270 Riverside Street  
Portland, ME 04103-1040

arkinetics Project #: 12025.07

Drawing Title  
ELECTRICAL  
DEMOLITION PLAN

Date of Issue:  
Plan Review 08/28/12

Sheet #: E-101



33851 Curtis Blvd., 216  
Eastlake, OH 44095  
T 440.953.8760  
F 440.953.1289  
www.tecinc.com  
cleveland | columbus