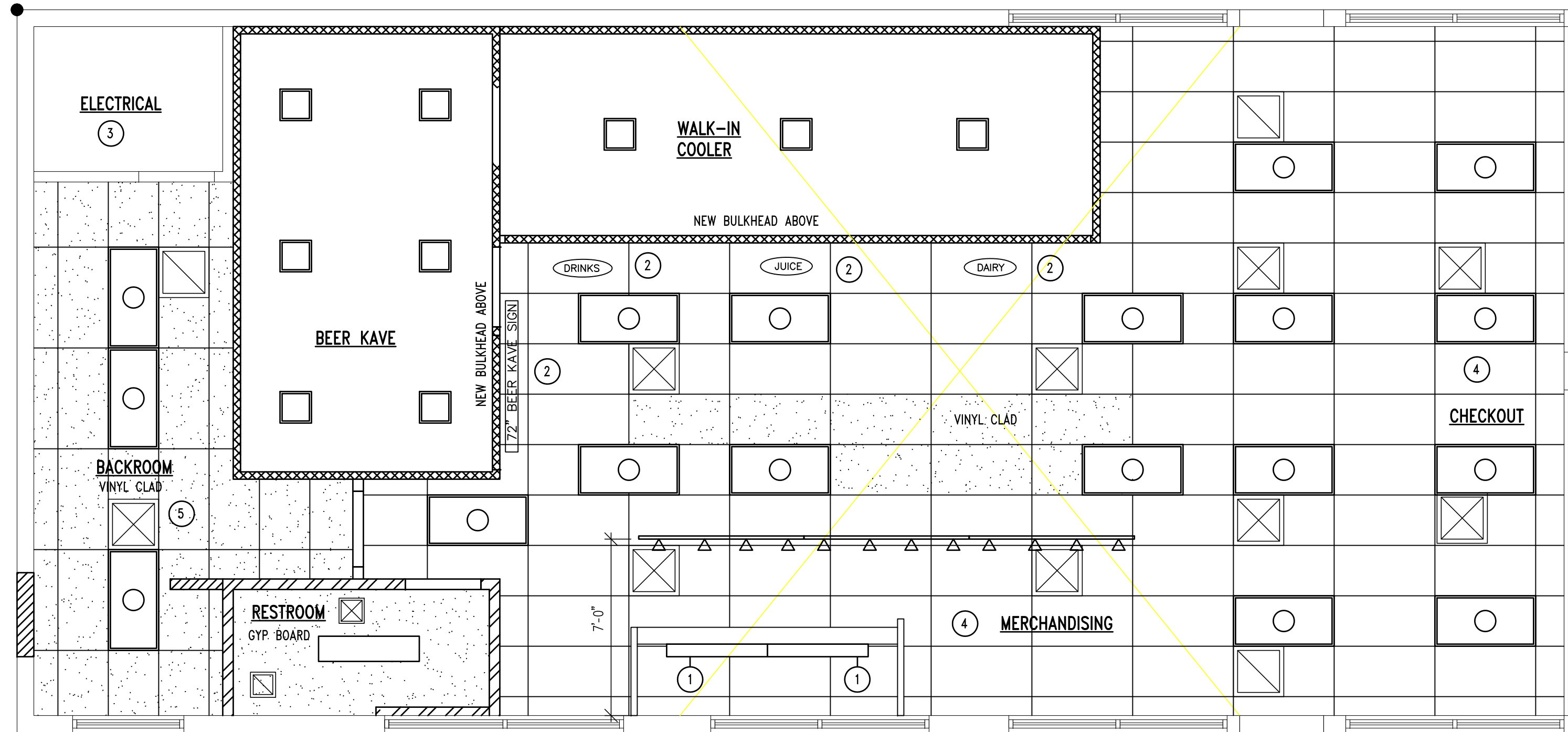
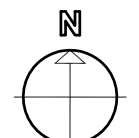


Revisions:

REFLECTED CEILING PLAN  
1/4" = 1'-0"



**GENERAL NOTES:**

- COORDINATE LOCATIONS OF LIGHTS, GRILLES, DIFFUSERS, ETC. WITH APPROVED ELECTRICAL & MECHANICAL DRAWINGS.
- SEE ELECTRICAL DRAWNGS FOR EMERGENCY LIGHTING AND EXIT SIGNAGE.
- NEW CEILING TILE SHALL HAVE A 25 OR LESS FLAME SPREAD RATING AND A 50 OR LESS SMOKE DEVELOPMENT RATING.
- SEE MECHANICAL AND ELECTRICAL DRAWINGS FOR ADDITIONAL INFORMATION.

**PLAN NOTES:**

- NEW COFFEE BAR ACCENT LIGHT FIXTURE W/ LENSE. MOUNT FIXTURE TO BACK OF COFFEE BAR DECORATIVE BEAM.
- NEW LED PRODUCT SIGNAGE ON BULKHEAD ABOVE. SEE ELECTRICAL DRAWINGS FOR ADDITIONAL INFORMATION.
- EXISTING CEILING TO REMAIN.
- NEW CEILING TILE AND NEW GRID.
- NEW VINYL CLAD CEILING TILE AND NEW GRID.

CEILING PLAN SYMBOL LEGEND	
	2' x 4' SUSPENDED ACOUSTICAL CEILING TILE AND GRID SYSTEM
	2' x 4' SUSPENDED VINYL CLAD ACOUSTICAL CEILING TILE AND GRID SYSTEM
	GYP. BOARD CEILING
	2' x 4' RECESSED FLUORESCENT LIGHT FIXTURE
	COOLER/BEER KAVE LIGHT FIXTURE
	1x LIGHT FIXTURE
	LOW VOLTAGE TRACK LIGHTING
	COFFEE BAR ACCENT LIGHT FIXTURE W/ LENSE
	RETURN AIR GRILLE
	SUPPLY AIR DIFFUSER
	EXHAUST FAN

**arkinetics**  
architects + urbanists  
Architecture - Planning - Interiors - Preservation - Urban Design  
www.arkinetics.com

Cleveland Office  
3723 Pearl Road  
Cleveland, OH 44109  
P: 216.749.7800  
F: 216.749.1300

Lorain Office  
201 1/2 Fifth Street  
Lorain, OH 44052  
P: 440.246.3100  
F: 440.246.5017

Project:

A Renovation For:  
**Irving Oil Marketing**  
Store #7017  
270 Riverside Street  
Portland, ME 04103-1040

arkinetics Project #: 12025.07

Drawing Title  
REFLECTED CEILING PLAN

Date of Issue:  
Plan Review 08/28/12

© arkinetics  
Sheet #:

A-102