

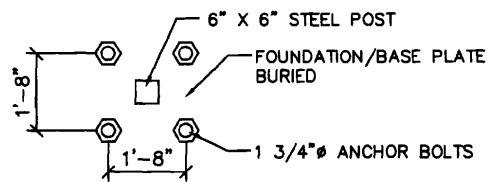
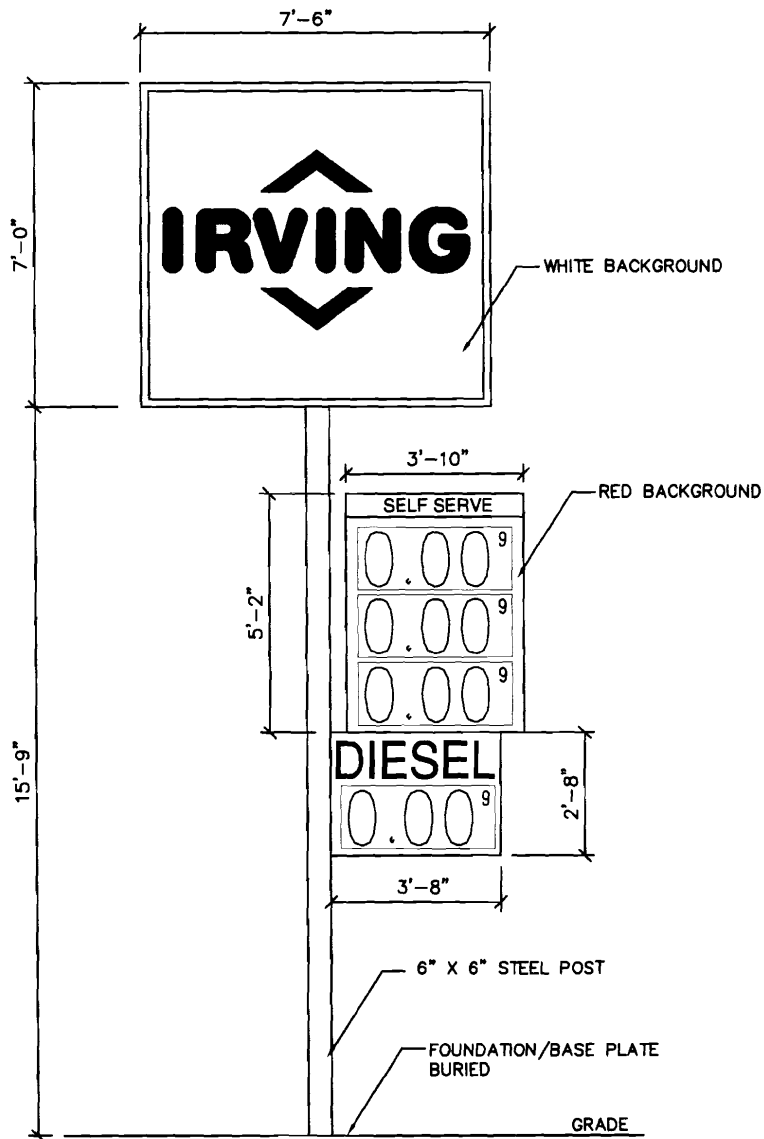
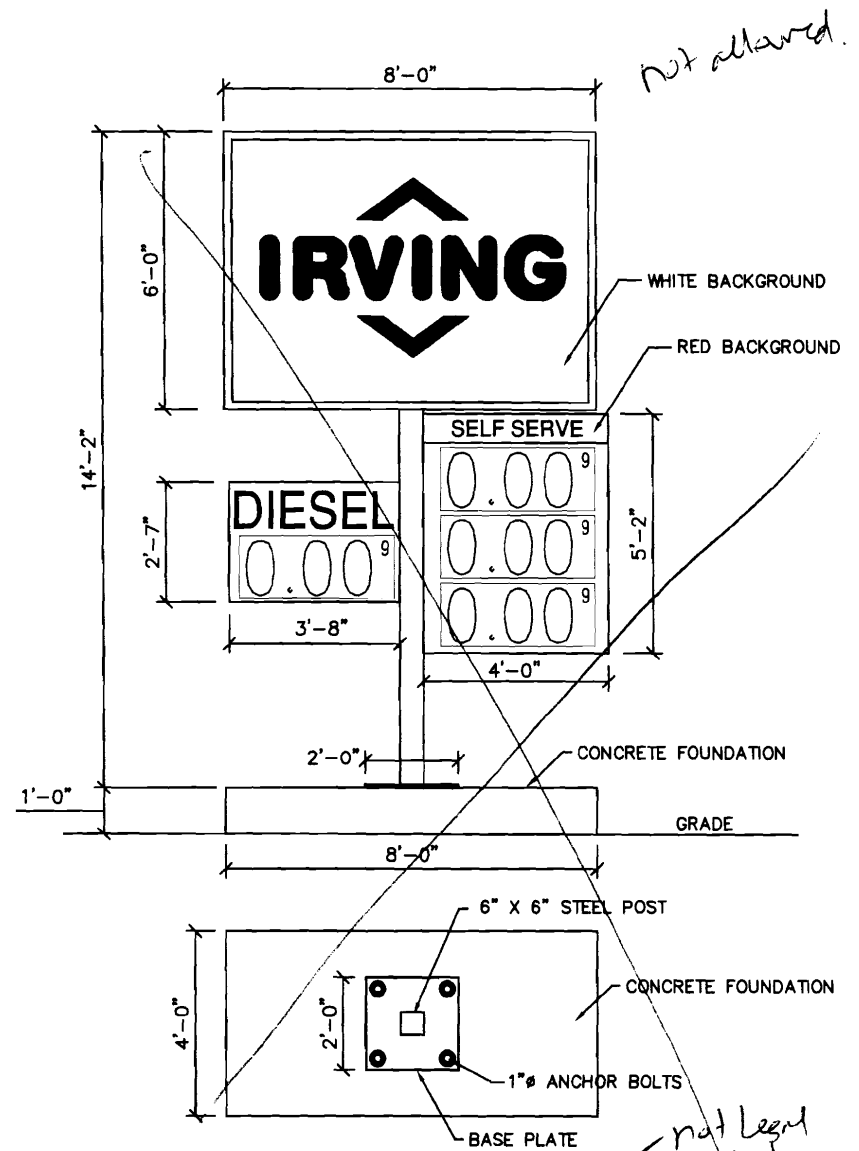


**A CROSS SECTION "A"**  
SCALE: 1 1/2" = 1'-0"

 <b>TRANSWORLD SIGNS</b> <small>9310 Parkway Montreal, QC, H1J 1N7          Phone: (514) 352-1336 Fax: (514) 352-0337          E-mail: info@transworldsigns.com</small>		<b>Revisions</b>		 <b>IRVING</b> Customer: IRVING Address: PORTLAND, ME USA Date: 3/11/08 Rep. Work Order Designer Drawing #: 209137m3 3/4	
		No	Description		
No 1					
No 2					
No 3					
No 4					
No 5					
No 6					



PYLON SIGN #1 RIVERSIDE ST



PYLON SIGN #2 WARREN AVE

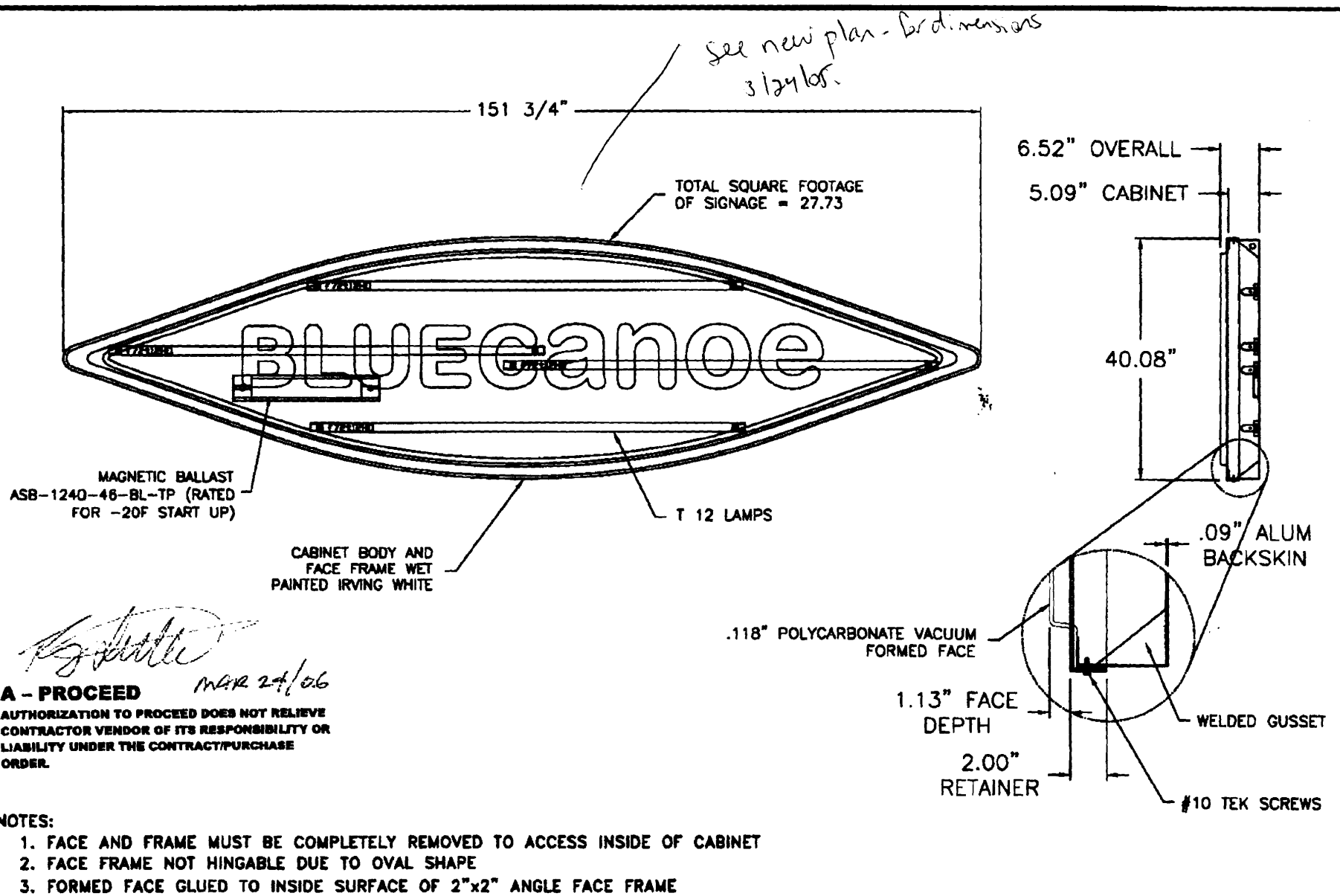
PORTLAND, ME  
270 RIVERSIDE STREET

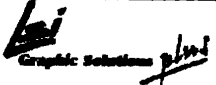
EXISTING PYLON SIGNS

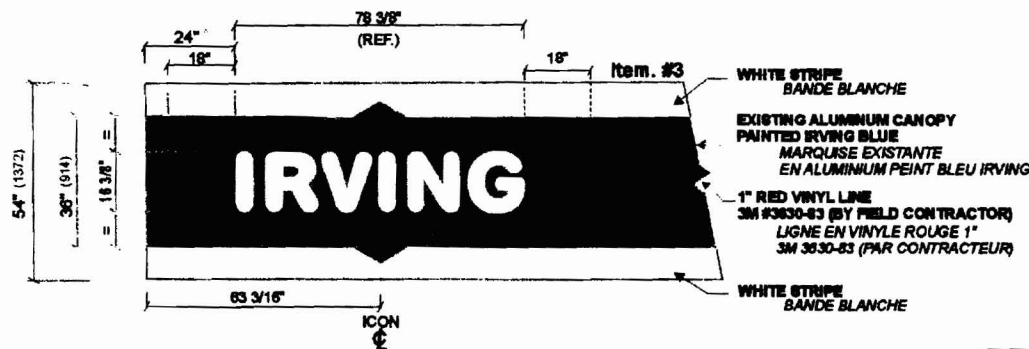
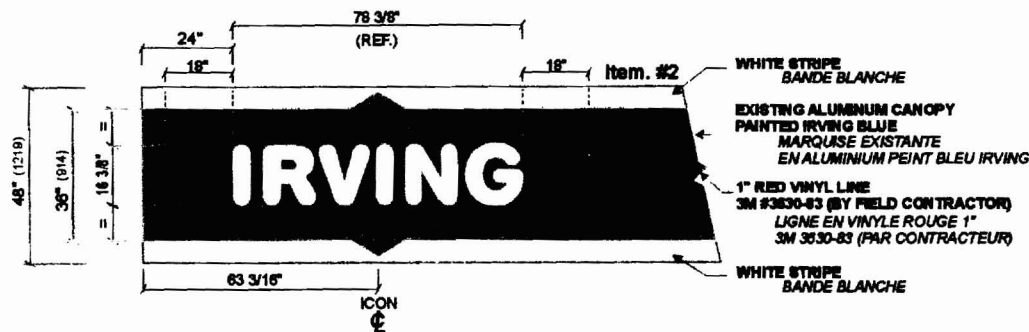
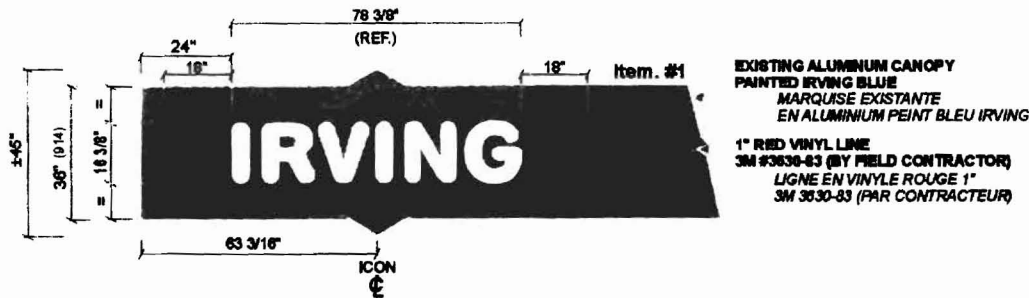
NTS

NOV 2007

not legal  
will have  
been removed by  
12/8/05.



TOLERANCES UNLESS OTHERWISE SPECIFIED: ± 1/32" FRACTIONS / .016" HOLE DIA. ± 1' ANGLES / .031" DECIMALS	TITLE:	IRVING OIL, 40" X 152" ILLUMINATED BLUE CANOE SINGLE SIDED SIGN COMPLETE DETAILS	SCALE: N.T.S.	6				 PROJECT #: 211455	
	NOTE: All designs and plans indicated on this drawing are the sole property of LSI Graphic Solutions Plus, created specifically for the noted project. None of such designs or plans shall be used or disclosed to any other person, firm or corporation without permission from LSI Graphic Solutions Plus.	MATERIAL:	PER PRINT	SHEET 1 OF 1	5				
	FINISH:	AS NOTED	DATE: 2/20/06	4					
			BY: RBS   CHECKED:	3					
			R.M. #	2					
				1					
			REV	ECN:	DATE:	BY:	DWG. #:		
			REVISIONS						

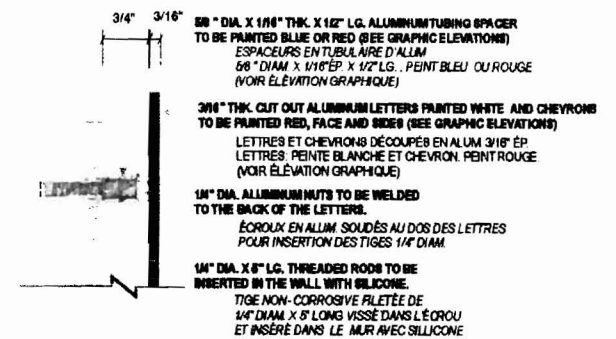


GRAPHIC ELEVATION  
ÉLEVATION GRAPHIQUE

SCALE / ÉCHELLE: 3/8" = 1'-0"

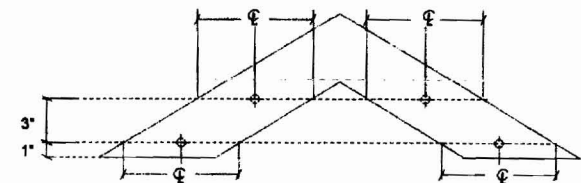
ADD 96" TO THIS DIMENSION AS REQUESTED  
BY IRVING OIL (SITE SPECIFIC)  
AJOUTER 96" À CETTE DIMENSION  
SI DEMANDÉ PAR "IRVING OIL" (SITE SPÉCIFIQUE)

**A - PROCEED**  
AUTHORIZATION TO PROCEED DOES NOT  
RELIEVE CONTRACTOR VENDOR OF ITS  
RESPONSIBILITY OR LIABILITY UNDER THE  
CONTRACT/PURCHASE ORDER.



CROSS SECTION  
COUPE TECHN. TYPIQUE

NOT TO SCALE  
AUCUNE ÉCHELLE



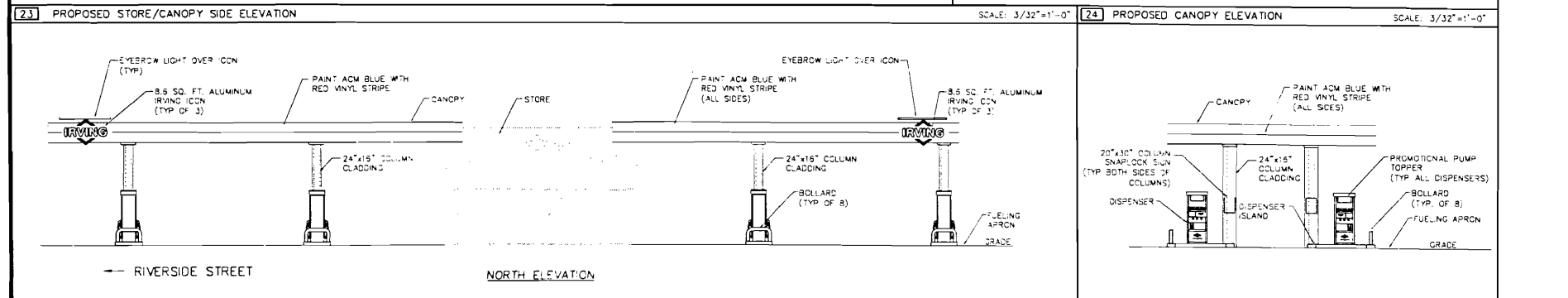
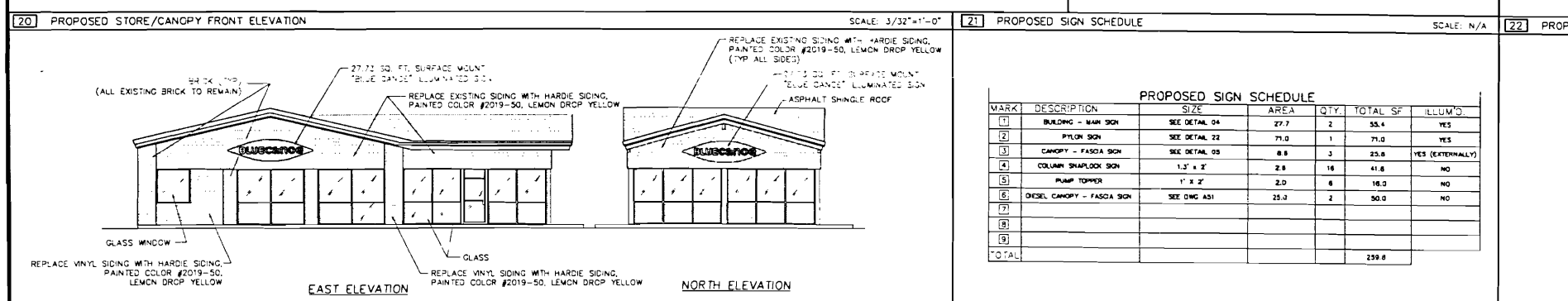
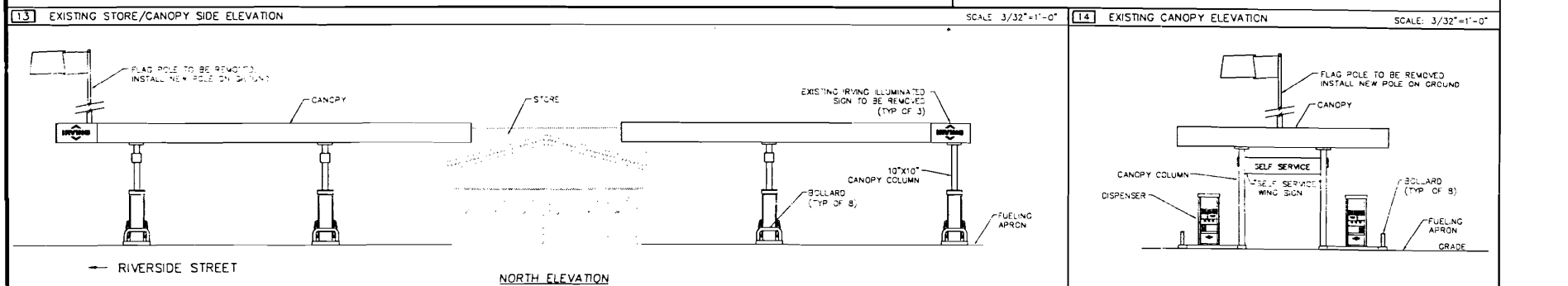
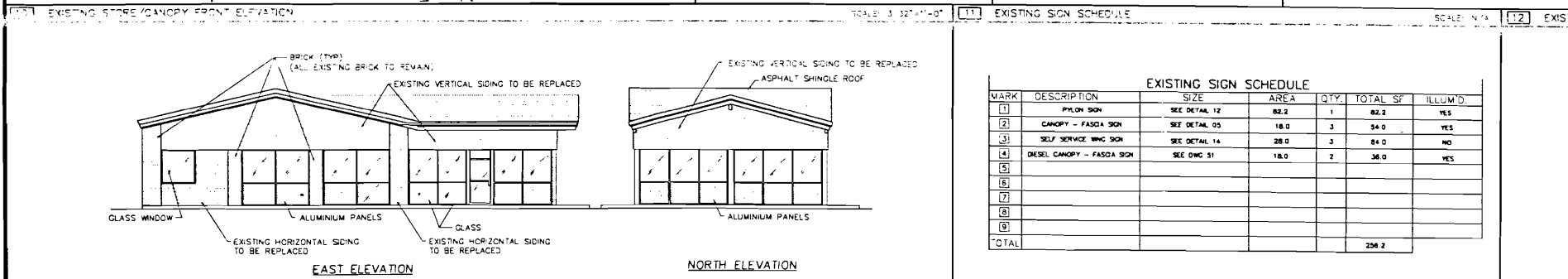
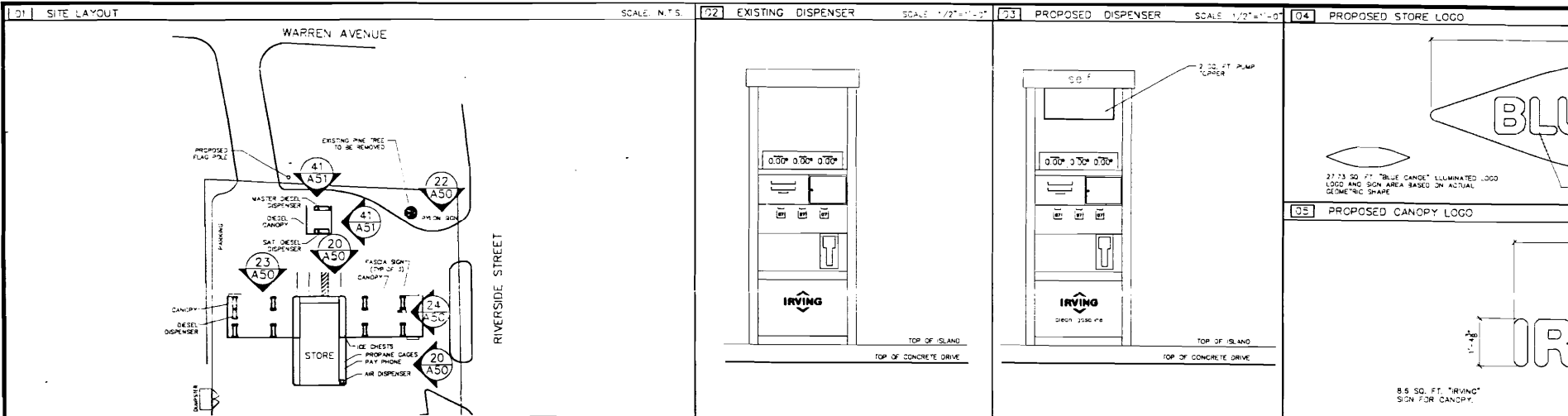
PINS LOCATION FOR CHEVRONS  
LOCALISATION DES TIGES POUR LES CHEVRONS

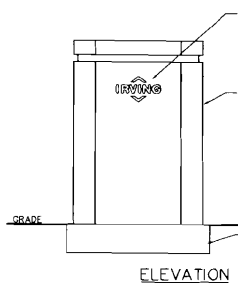
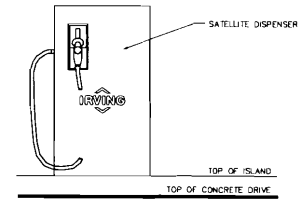
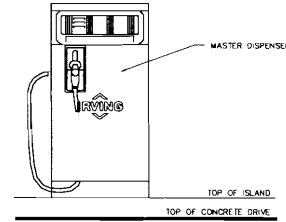
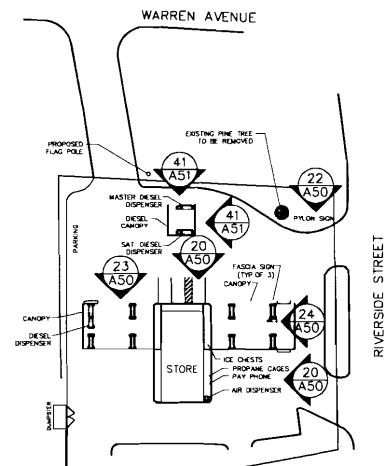
SCALE / ÉCHELLE: 1 1/2" = 1'-0"

- RED MATCH VINYL 3M #3630-83  
ROUGE APPAREILLANT VINYLE 3M #3630-83
- BLUE MATCH VINYL 3M #VT-12138  
BLEU APPAREILLANT VINYLE 3M #VT-12138
- WHITE MATCH ACRYLIC #7508  
BLANC APPAREILLANT L'ACRYLIQUE PIGM. #7508

COLORS / COULEURS

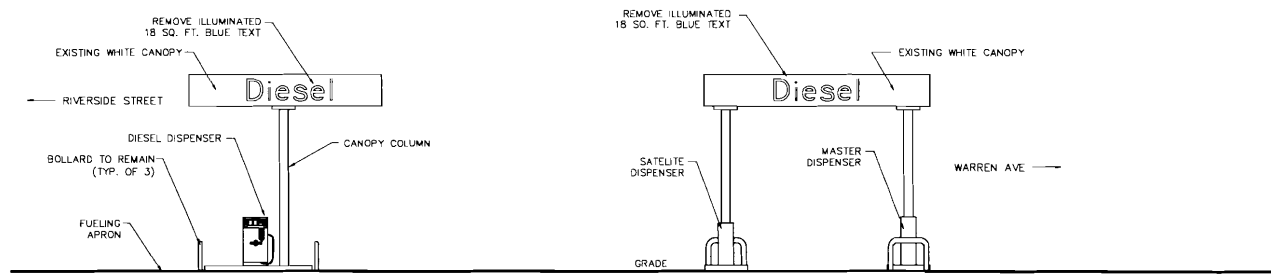
	Revisions	
	<p>1. 11/15/11 - REVISED PER COMMENTS FROM IRVING OIL</p> <p>2. 11/15/11 - REVISED PER COMMENTS FROM IRVING OIL</p> <p>3. 11/15/11 - REVISED PER COMMENTS FROM IRVING OIL</p> <p>4. 11/15/11 - REVISED PER COMMENTS FROM IRVING OIL</p> <p>5. 11/15/11 - REVISED PER COMMENTS FROM IRVING OIL</p> <p>6. 11/15/11 - REVISED PER COMMENTS FROM IRVING OIL</p> <p>7. 11/15/11 - REVISED PER COMMENTS FROM IRVING OIL</p> <p>8. 11/15/11 - REVISED PER COMMENTS FROM IRVING OIL</p> <p>9. 11/15/11 - REVISED PER COMMENTS FROM IRVING OIL</p> <p>10. 11/15/11 - REVISED PER COMMENTS FROM IRVING OIL</p> <p>11. 11/15/11 - REVISED PER COMMENTS FROM IRVING OIL</p> <p>12. 11/15/11 - REVISED PER COMMENTS FROM IRVING OIL</p> <p>13. 11/15/11 - REVISED PER COMMENTS FROM IRVING OIL</p> <p>14. 11/15/11 - REVISED PER COMMENTS FROM IRVING OIL</p> <p>15. 11/15/11 - REVISED PER COMMENTS FROM IRVING OIL</p> <p>16. 11/15/11 - REVISED PER COMMENTS FROM IRVING OIL</p> <p>17. 11/15/11 - REVISED PER COMMENTS FROM IRVING OIL</p> <p>18. 11/15/11 - REVISED PER COMMENTS FROM IRVING OIL</p> <p>19. 11/15/11 - REVISED PER COMMENTS FROM IRVING OIL</p> <p>20. 11/15/11 - REVISED PER COMMENTS FROM IRVING OIL</p>	<p>Irving</p> <p>J.Y. AREL</p> <p>Work Order</p>





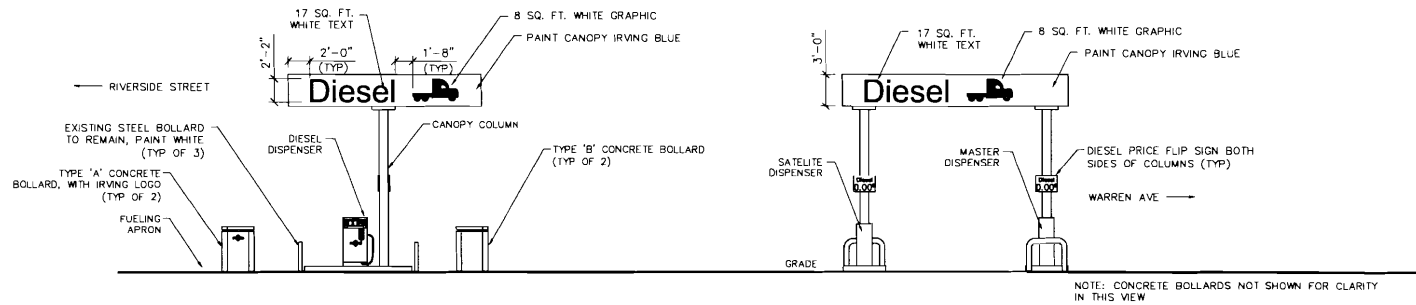
40 EXISTING DIESEL CANOPY ELEVATION

SCALE: 1/8"=1'-0"



41 PROPOSED DIESEL CANOPY ELEVATION

SCALE: 1/8"=1'-0"



45 SIGN SCHEDULE

SEE DRAWING A50 FOR SIGN SCHEDULE