

**BUILDER:** BRADCO SUPPLY CORPORATION  
**CUSTOMER:** BRADCO-WICKES LUMBER

**LOCATION:** PORTLAND, ME  
 Bldg A : 178.00 200.00 18.83  
 SWA HEIGHT: 18.83  
 FRONT ROOF PITCH: 1.000  
 DOWNSPOUT DROPS-SWA: 6  
 DOWNSPOUT DROPS-SWC: 9

**TABLE OF CONTENTS**  
 ANCHOR BOLT PLAN A1-A5  
 CROSS SECTION C51-C57  
 ROOF FRAMING BE1-BE2  
 ROOF SHEETING S1-S4  
 SIDEWALL E1-E2  
 UPDATED DETAILS  
 QUALITY ASSURANCE POLICY

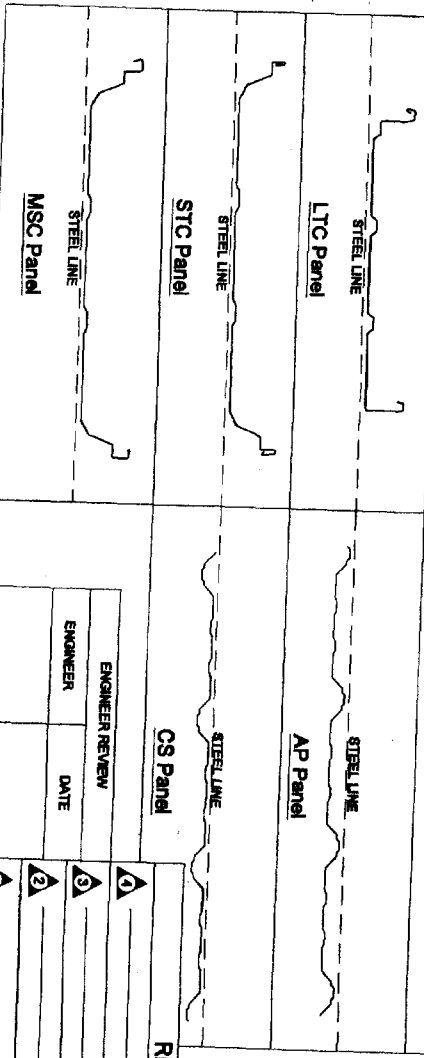
**Roof Sheeting:**  
 Type: MSC  
 Gage: 24  
 Color: Galvalume

**Ordered Options:**

Base Condition: Base girt w/trim  
 Base Trim Color: Parchment  
 Wall Mastic: No  
 UL Rating: 90  
 Thermal Blocks: Yes  
 Sidewall Eave Trim Type: Eave Gutter  
 Eave & Gable Trim Color: Parchment  
 Downspout Type: None  
 Downspout Color: Parchment  
 Elbows at Bottom of Drops: Yes  
 Corner Trim Color: Parchment  
 Framed Opening Trim Color: Parchment  
 Skylite: 0

**Framing:**  
 Purlin Type: Zees  
 Girt Type: Zees & Ceas

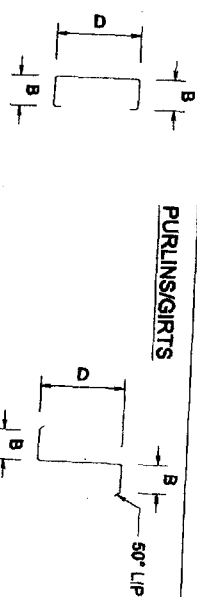
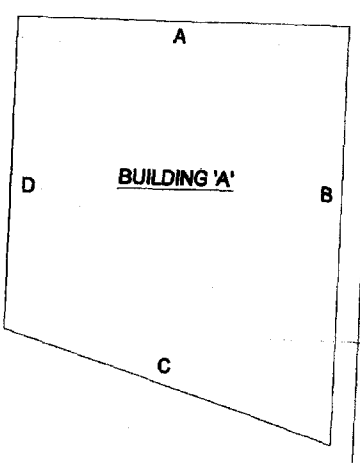
**SHEETING TYPES**



**Framing Kite & Wall Openings**  
 See Accessory Schedule on Anchor Bolt Plan, Page A1.

**Loading Information & Frame Column Reactions**  
 See Load Notes and Reactions on Anchor Bolt Detail Page, Page A4 & A5.

**KEY PLAN**



DESIGNATION	D	B
816	8.00	3.00
814	8.00	3.00
812	8.00	3.00
1014	10.00	3.00
1012	10.00	3.00

DESIGNATION	D	B
816	8.00	2.80
814	8.00	2.80
812	8.00	2.80
1014	10.00	2.78
1012	10.00	2.78

**Drawing Disclaimer:**  
 a) Drawings stamped "PERMIT DRAWINGS" are drawings that are complete for the permit, however, since some details and part numbers are missing, they are preliminary and are not to be used for construction and are not considered final drawings.  
 b) Drawings stamped "PROGRESS DRAWINGS" are drawings that are complete for the most part, however, since some details and part numbers are missing, they are preliminary and are not to be used for construction and are not considered final drawings.  
 c) Drawings stamped "DOCUMENTS FOR APPROVAL" are preliminary drawings, used for approval with no part numbers and are not to be used for construction.

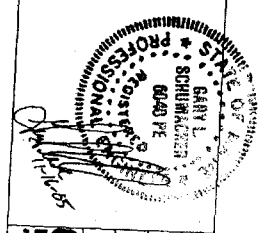
GENERAL DETAIL MANUAL V

ROOF PANEL MANUAL V

**REVISIONS**

NO.	DESCRIPTION	DATE
1	ENGINEER REVIEW	
2	ENGINEER	
3	DATE	
4		

NOTWITHSTANDING THE ADJACENT SEAL, NEITHER THE ENGINEER NAMED NOR CHIEF BUILDING IS ACTING AS THE ENGINEER OF RECORD. THE ENGINEER NAMED AND CHIEF BUILDING'S RESPONSIBILITY IS LIMITED TO THE STRUCTURAL PERFORMANCE OF THE PRE-ENGINEERED COMPONENTS DESIGNED BY CHIEF BUILDING.



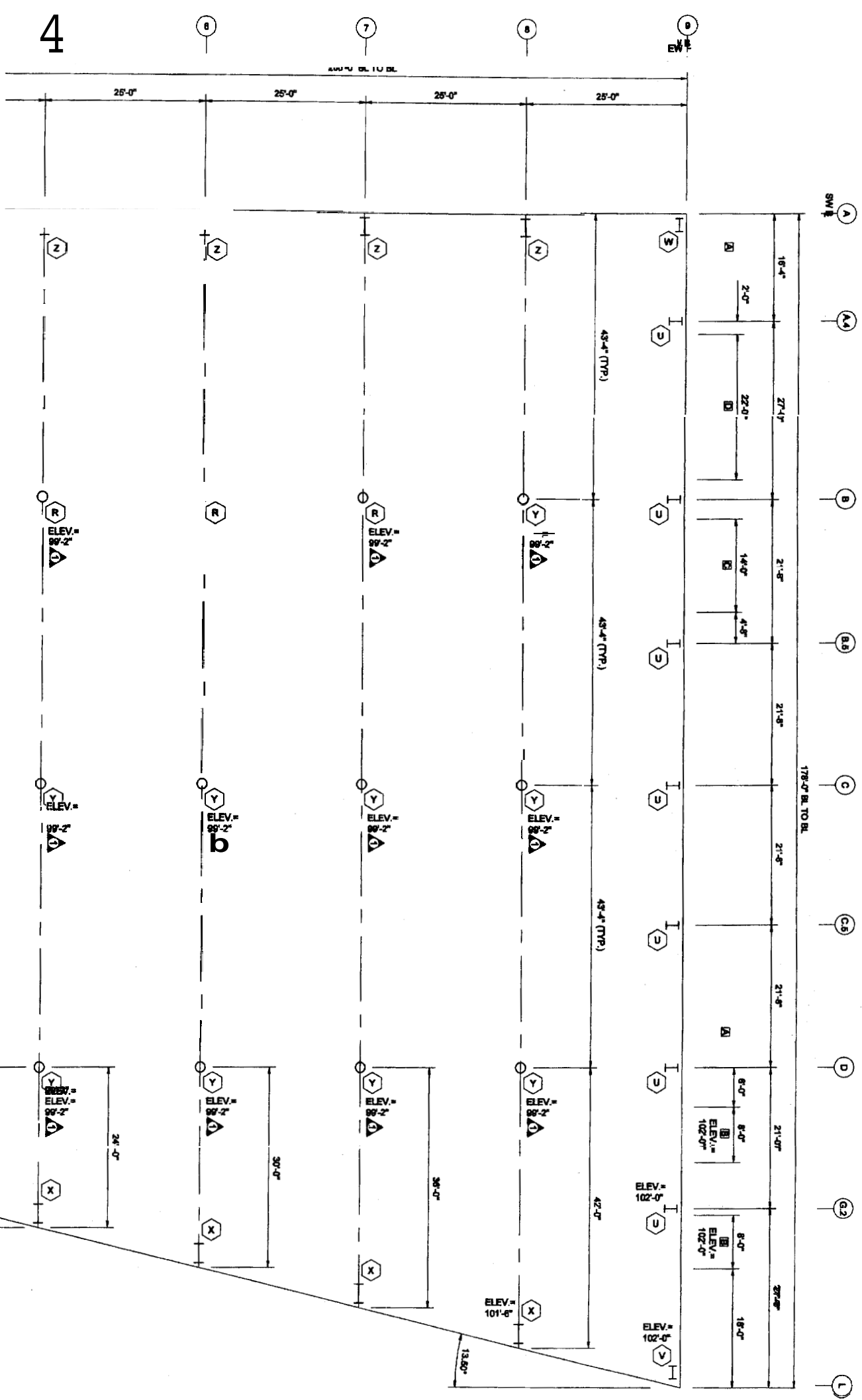
**COVER PAGE**  
 BRADCO SUPPLY / BRADCO-WICKES LUMBER  
 PORTLAND, ME  
 RFM 178X200X18-10 1:12 25 BAYS  
**CHIEF BUILDING**  
 DRAWN: CD CHECK: C1  
 ORDER NO. CO84705

**PROGRESS DRAWING**

PREPARED  
DATE DEC - 8 2005

**ACCESSORY SCHEDULE**

MARK	QUANTITY	DESCRIPTION
A	4	3070 PRE-ASSEMBLED WALL DOOR
B	2	8'-0" X 8'-0" HILTI OVERHEAD DOOR F.O.
C	1	14'-0" X 14'-0" HILTI OVERHEAD DOOR F.O.
D	1	22'-0" X 14'-0" HILTI OVERHEAD DOOR F.O.



**REFERENCE NOTES:**

1. ALL ANCHOR BOLTS INCLUDING NUTS AND WASHERS FOR SAME ARE NOT FURNISHED BY CHIEF BUILDINGS.
2. ANCHOR BOLT MATERIAL SHALL CONFORM TO ASTM A307 OR EQUAL.
3. BOLT PROJECTIONS ARE RECOMMENDED MINIMUMS BASED ON THE BASE PLATE BEARING DIRECTLY ON THE CONCRETE PIER. IF THE BASE PLATE IS TO BEAR ON GROUT, THE BOLT PROJECTION MUST BE INCREASED ACCORDINGLY.
4. ALL DRAWINGS ARE NOT TO SCALE.

**ANCHOR BOLTS**

QUANTITY	SIZE	PROJ.
18	0.5" Ø	1 1/2"
18	0.75" Ø	2"
0	1" Ø	2"
0	1 1/2" Ø	2 1/2"

**REVISIONS**

NO.	DESCRIPTION
1	REVISED PER C.O. #2

**ANCHOR BOLT PLAN**  
 FINISHED FLOOR ELEVATION = 100'-0"  
 BASE OF ALL COLUMNS AT ELEVATION = 100'-0" UNLESS NOTED.  
 BASE OF FRAME OPENING JAMBS AT ELEVATION = 100'-0" UNLESS NOTED.

**ANCHOR BOLT SETTING PLAN**  
 BRADCO SUPPLY / BRADCO-WICKES LUMBER  
 PORTLAND, ME

NOTWITHSTANDING THE ADVISORY SEAL, NEITHER THE ENGINEER NAME NOR CHIEF BUILDINGS IS ACTING AS THE ENGINEER OF RECORD. THE ENGINEER NAMED AND CHIEF BUILDINGS RESPONSIBILITY IS LIMITED TO THE STRUCTURAL PERFORMANCE OF THE PRE-ENGINEERED COMPONENTS DESIGNED BY CHIEF BUILDINGS.

STATE OF MAINE  
 EARLY L. SCUDLARKER  
 REGISTERED PROFESSIONAL ENGINEER  
 No. 10048 PE  
 11-16-05

CHIEF BUILDINGS  
 200 WESTERN AVENUE  
 PORTLAND, ME 04108  
 11-16-05

RFM 178X200X16-10 1:12 25' BAYS  
 DRAWN CD  
 CHECK ANK  
 ORDER NO. CO84705  
 A1  
 AS