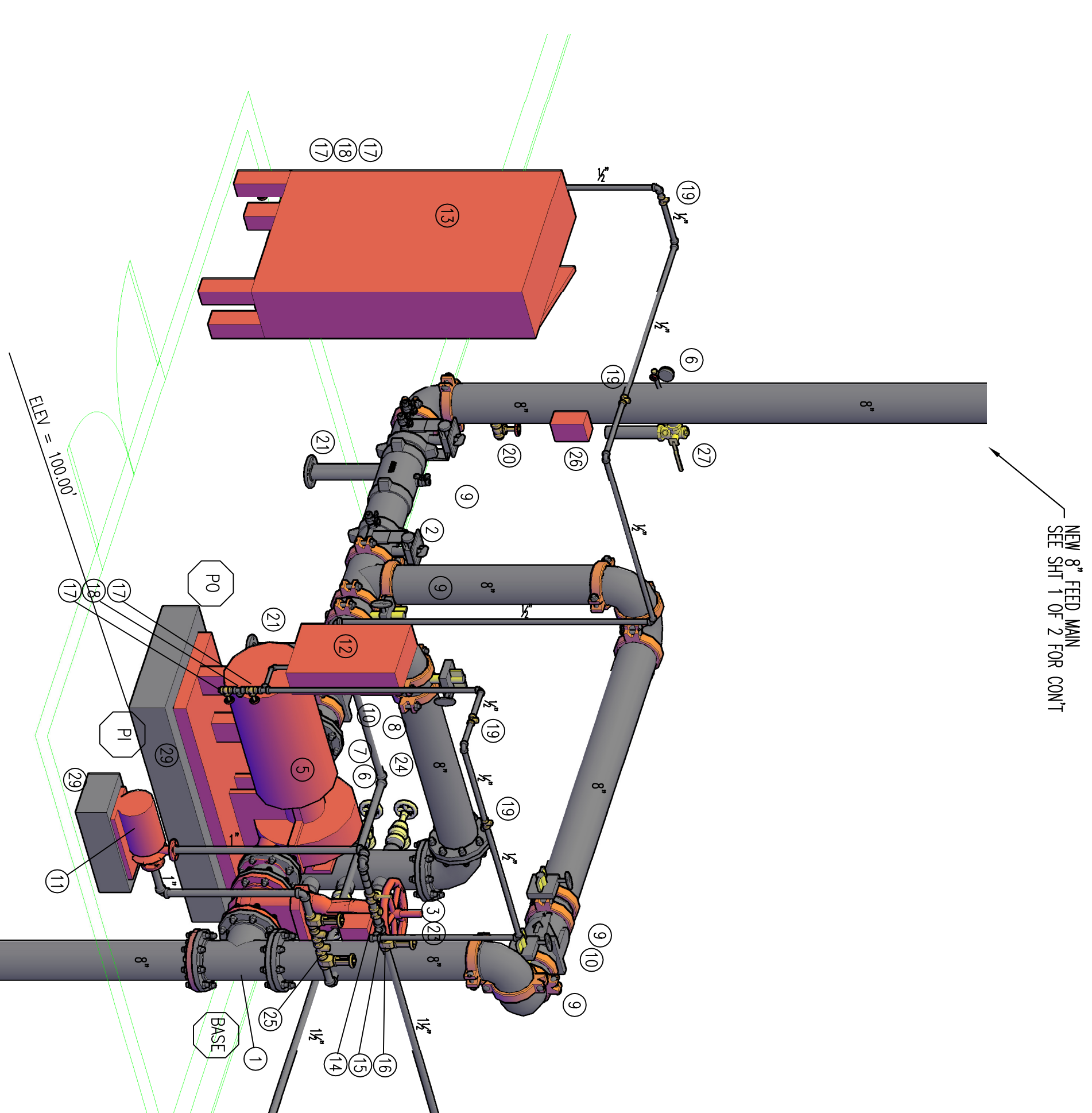
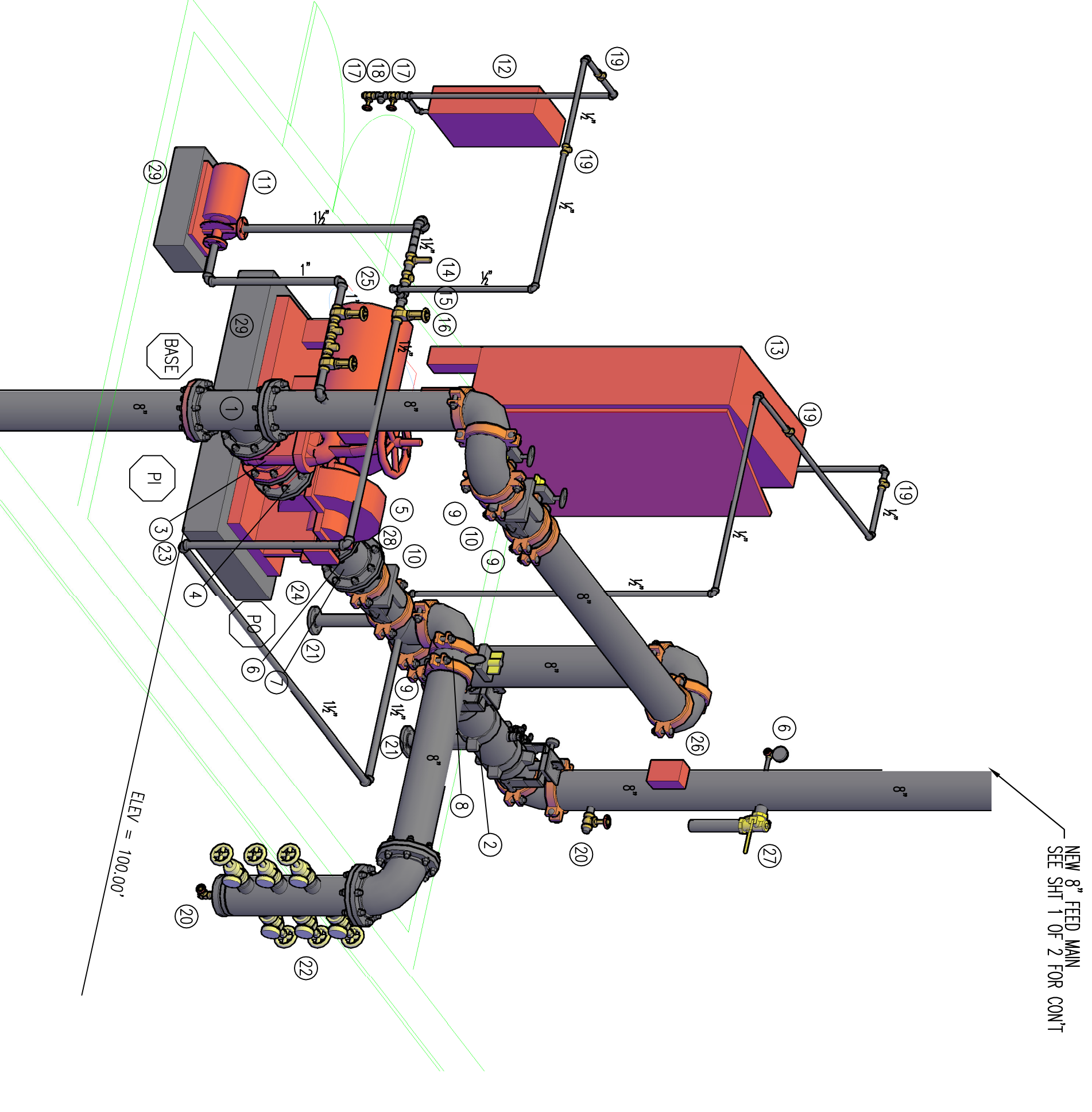


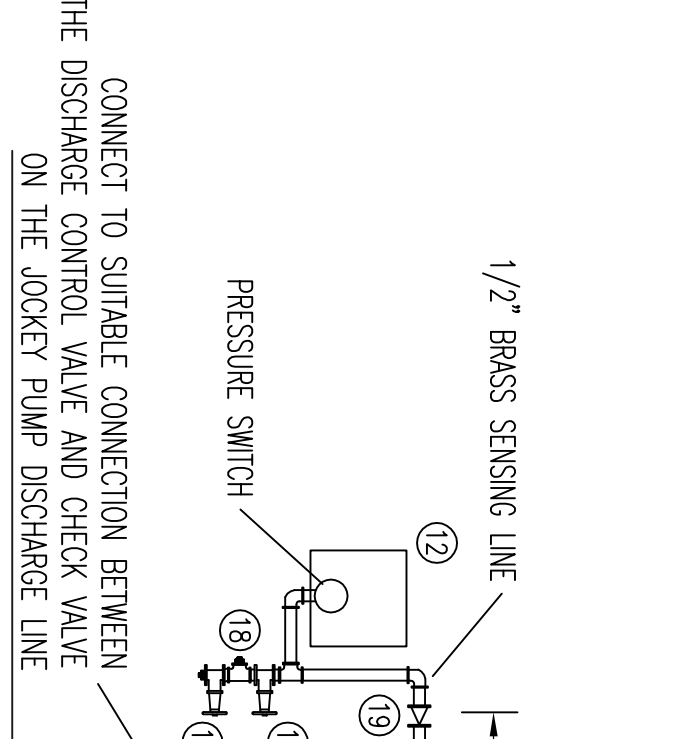
FIRE PUMP ROOM PARTIAL PLAN
SCALE: 1/4" = 1'-0"



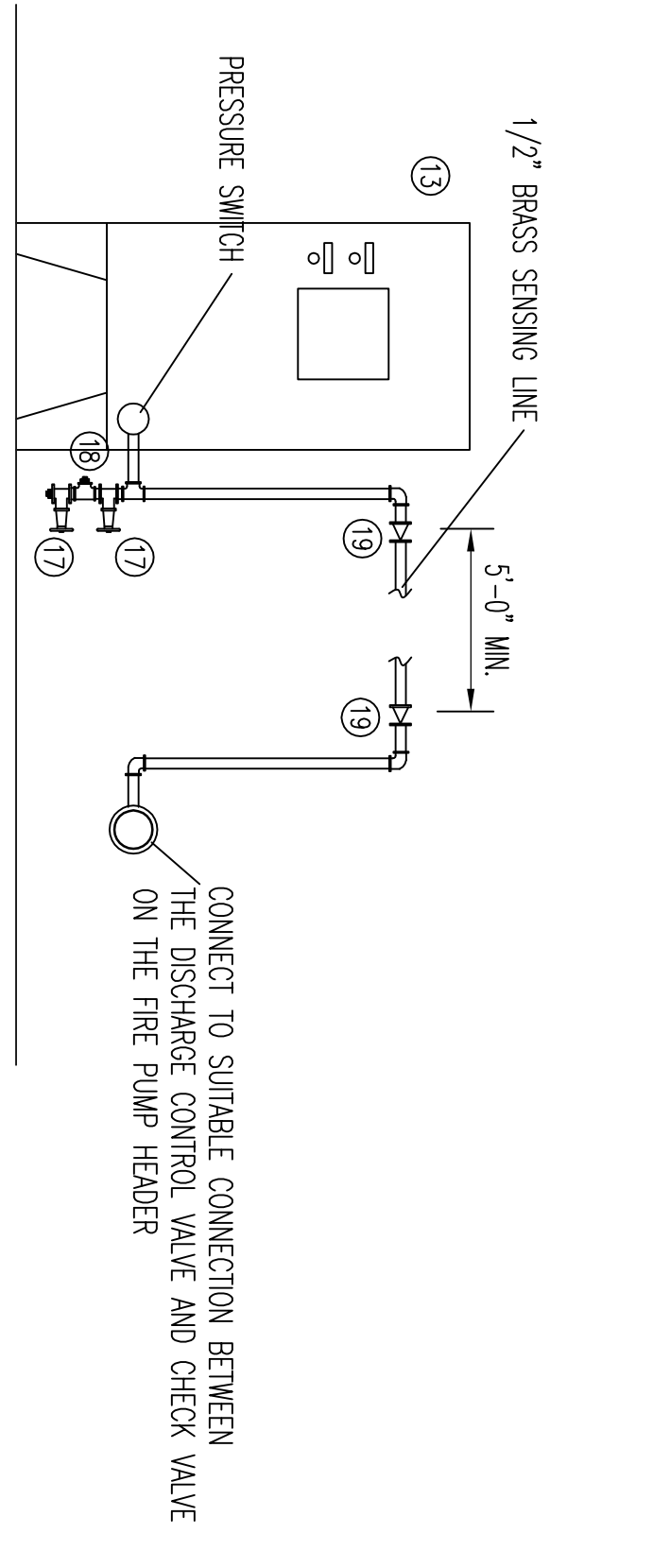
SW ISOMETRIC FIRE PUMP DETAIL
N.T.S.



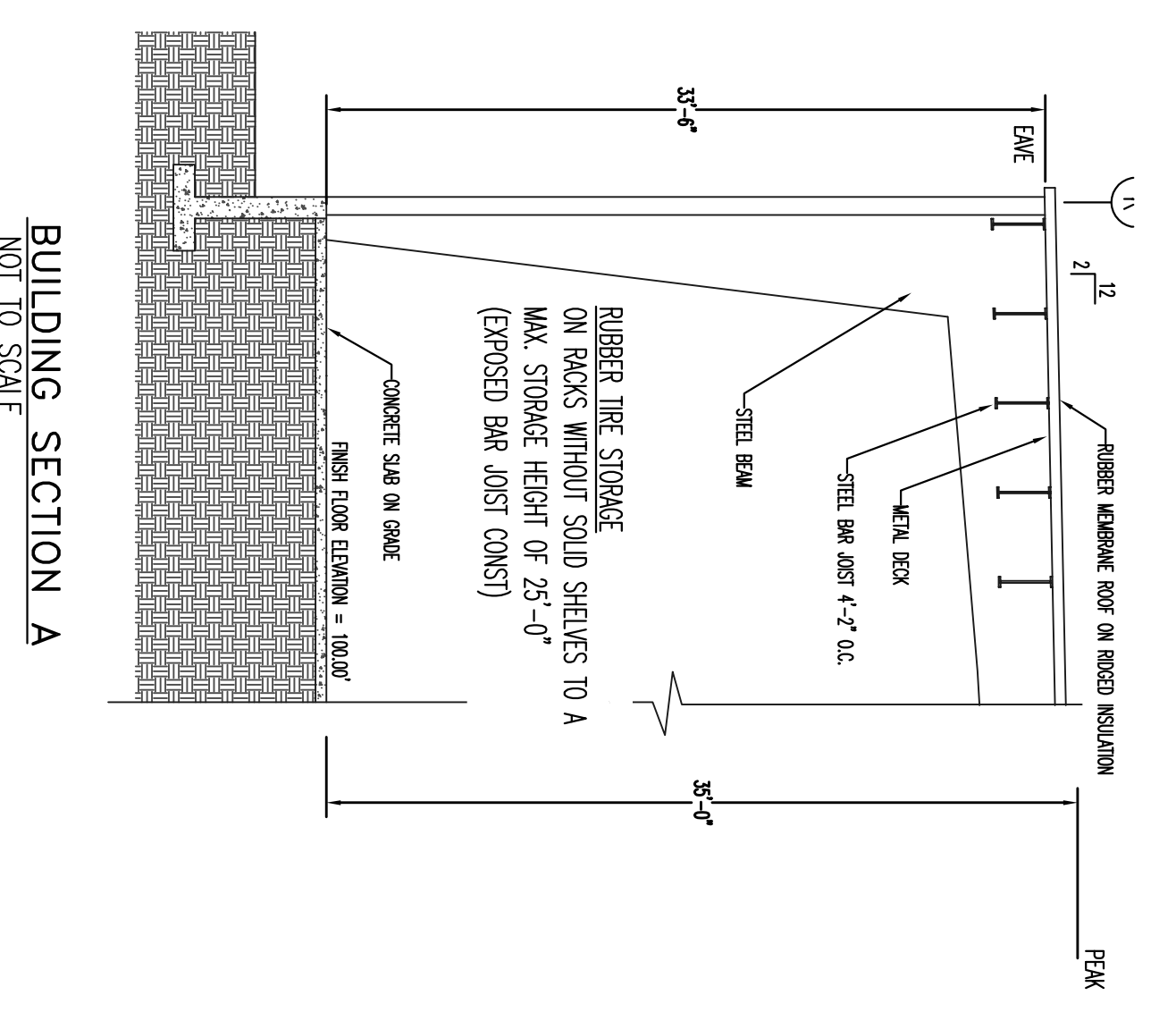
SE ISOMETRIC FIRE PUMP DETAIL
N.T.S.



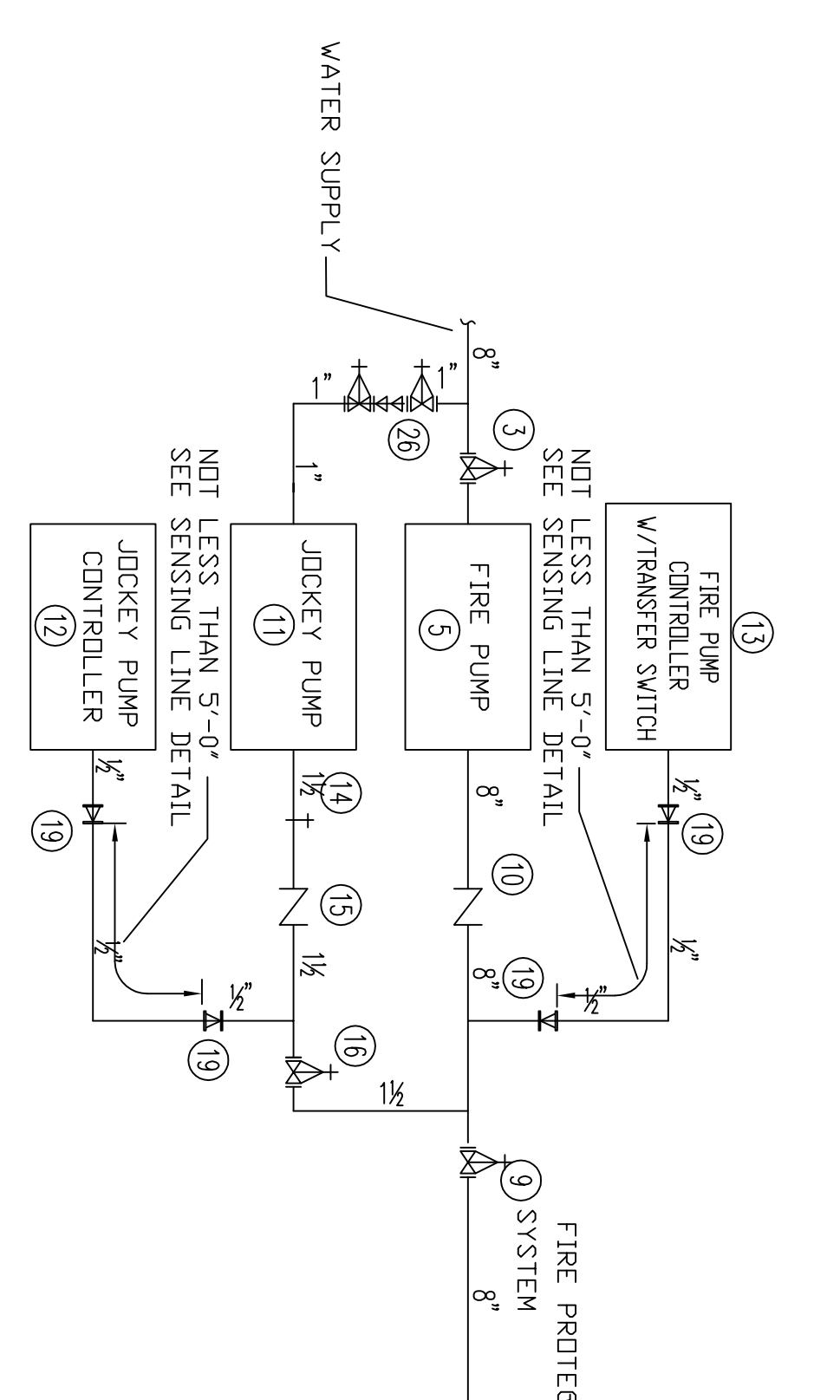
JOCKEY PUMP SENSING LINE DETAIL
NOT TO SCALE



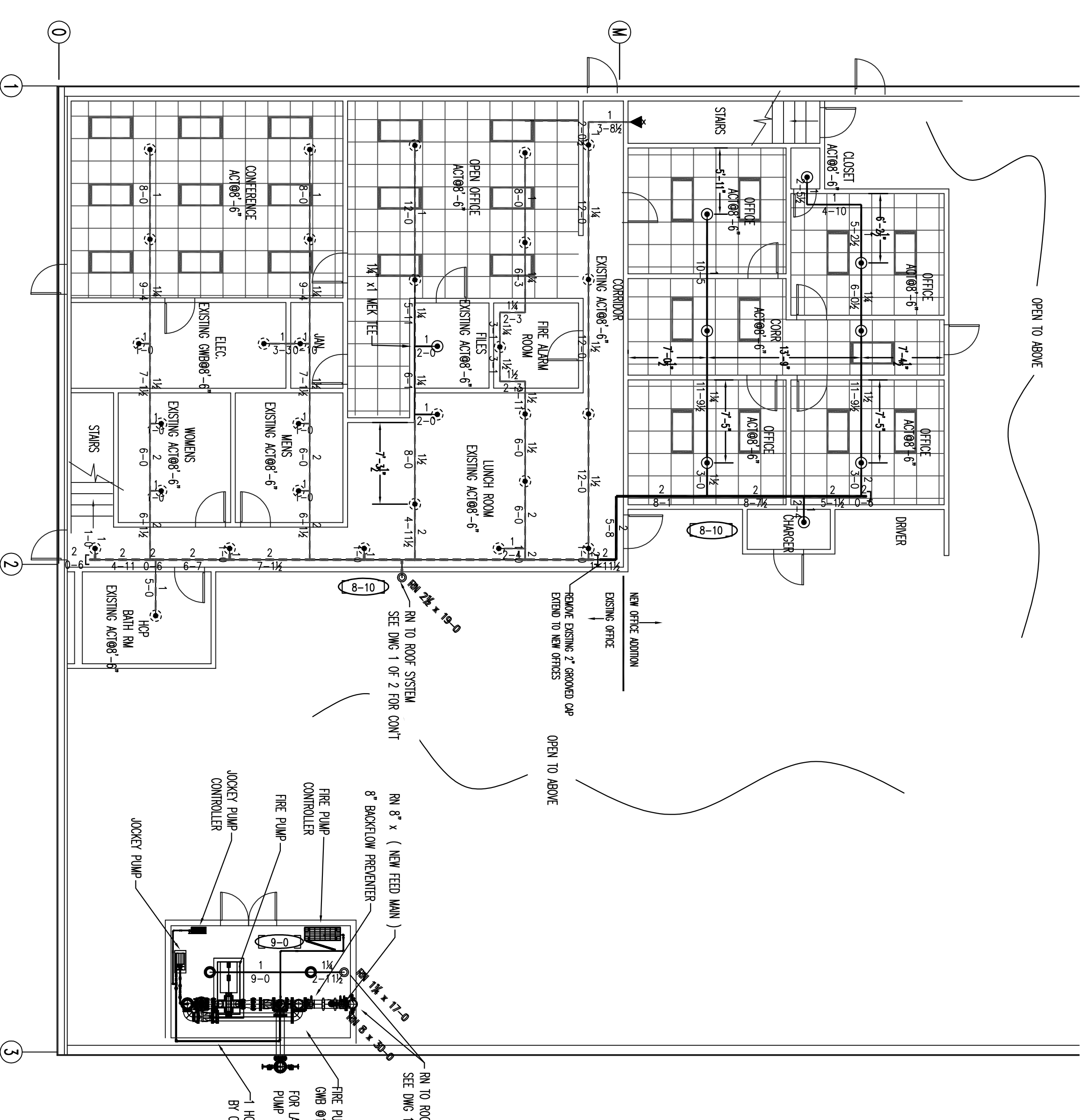
FIRE PUMP SENSING LINE DETAIL
NOT TO SCALE



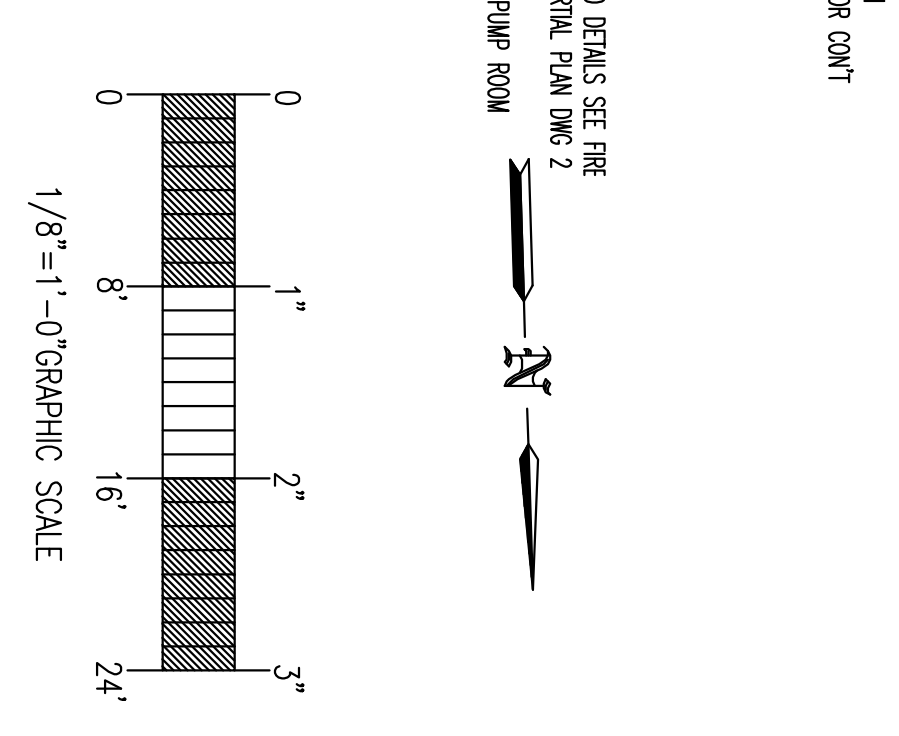
BUILDING SECTION A
NOT TO SCALE



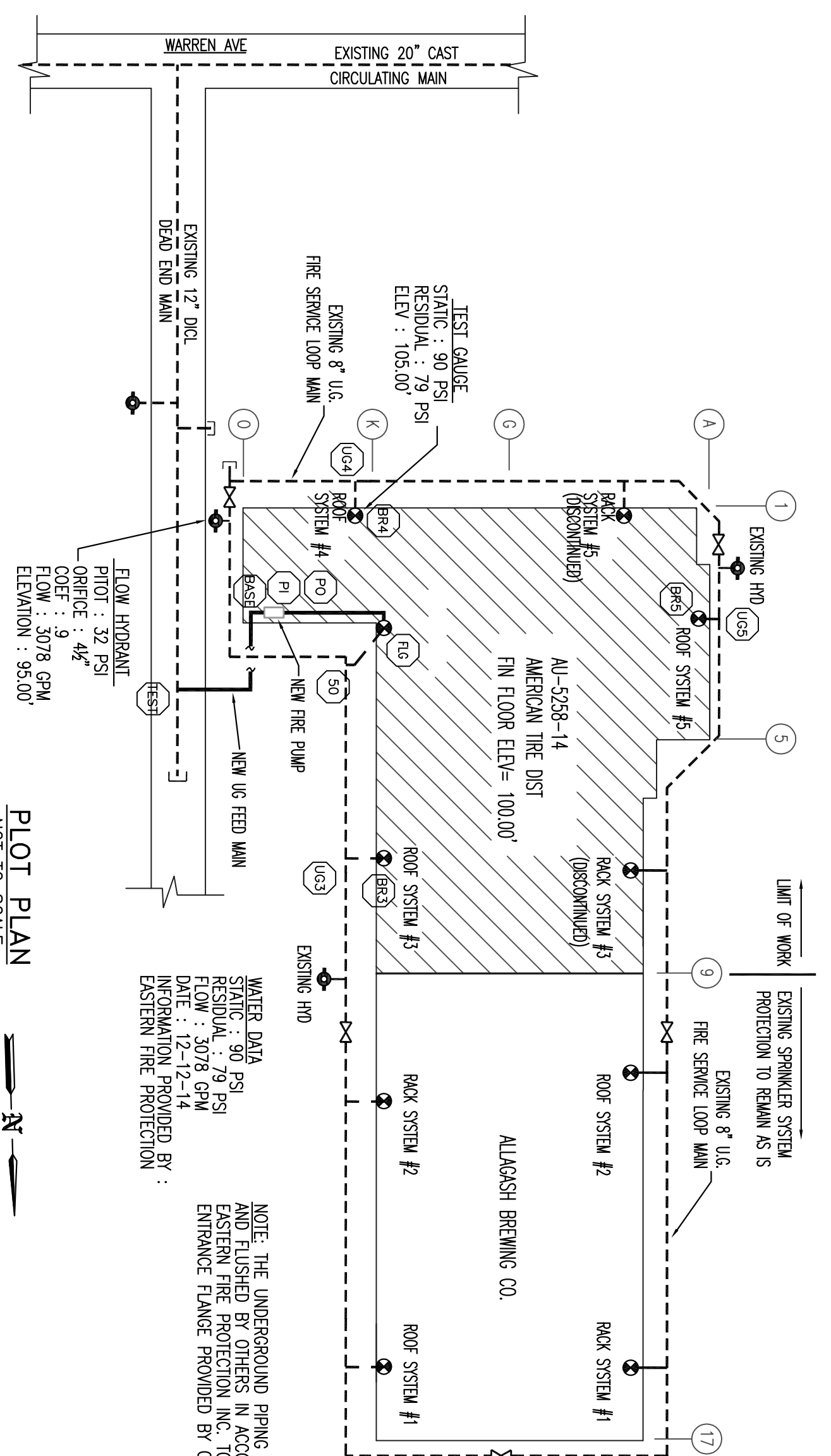
PINGING CONNECTION FOR PRESSURE SENSING LINE
(AS PER FIGURE A.4.20(b) NFPA 20, 2010 EDITION)



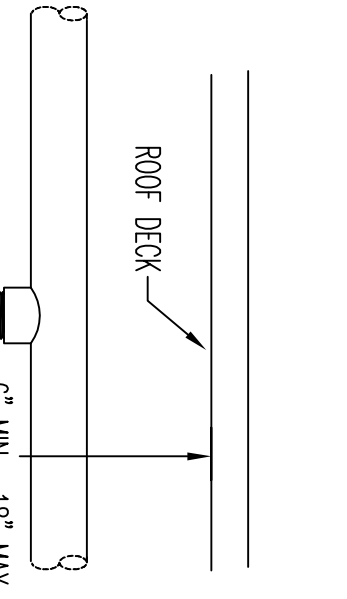
FIRE SPRINKLER PLAN - SYSTEM #4 BELOW MEZZ
SCALE: 1/8" = 1'-0"



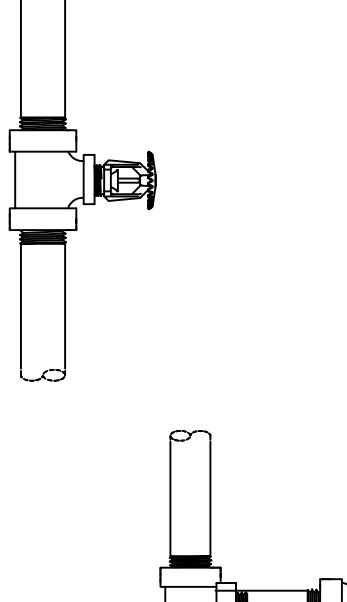
KEY PLAN
1/8" = 1'-0" GRAPHIC SCALE



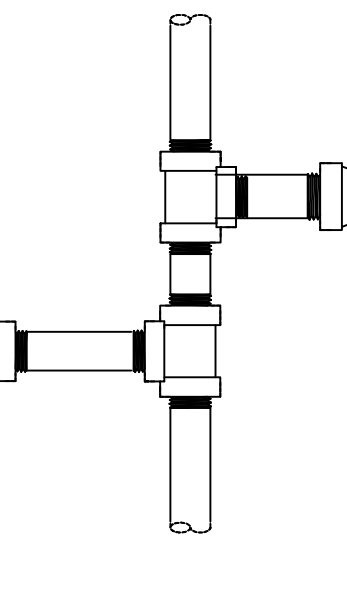
PLOT PLAN
NOT TO SCALE



BRASS ESPEE PENDENT
SYMBOL =



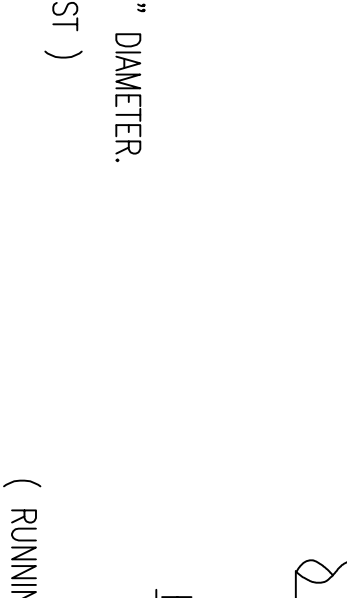
BRASS UPRIGHT
SYMBOL =



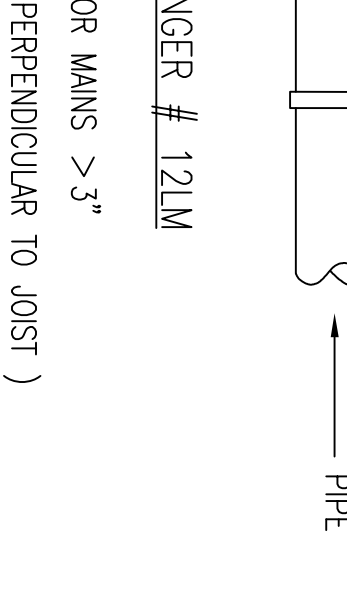
CHROME PENDENT ON DROP W/CHROME RECESSED ESC
SYMBOL =



HANGER #11



HANGER #14M



HANGER #12M

LEGEND

- 8" FLANGED TEE
- 8" PUMP MODEL C300 BACKFLOW PREVENTER W/ BITTERLY WAVES, TAMPER SWITCHES (N.O.)
- 8" O.S.&Y GATE VALVE W/ TAMPER SWITCH (N.O.)
- 3" SECTION PRESSURE GAUGE (0-300 PS)
- PATTERSON HORIZONTAL SPRT CASE FIRE PUMP MODEL 816 W/ 25HP 460/60/3 RATED FOR 1500 GPM @ 80 PSI (L. LISTED) / FM APPROVED CLOCKWISE ROTATION
- DISCHARGE PRESSURE GAUGE (0-300 PS)
- 3/4" ASING RELIEF VALVE LOCATED ON THE DISCHARGE SIDE OF THE PUMP.
- 8" TOO MODEL BRY GROUNDED BITTERLY VALVE W/ TAMPER SWITCH (N.C.)
- 8" TOO MODEL BRY GROUNDED BITTERLY VALVE W/ TAMPER SWITCH (N.O.)
- 8" TOO MODEL CV-17 GROUNDED CHECK VALVE
- WHI MODEL T41L 1.5HP 460/3/60 JOCKEY PUMP 1" SECTION 1" DISCHARGE.
- FATON MODEL 7900 FULL SERVICE SOFT START REDUCED VOLT FIRE PUMP CONTROLLER
- 3/4" JOCKEY PUMP RELIEF VALVE
- 1/2" CHECK VALVE
- 1/2" BITTERBELL VALVE W/ TAMPER SWITCH (N.O.)
- 2" x 2" x 1" TEE W/ 1/4" PLUG
- 1/2" CHECK VALVE W/ 3/2" HOLE IN CAPPER.
- 1" MANUARY DRAIN VALVE
- PPE STAND
- 20" POTTER TEST HEATER (6) 24" HOSE GATE VALVES (SEE DWG 1 OF 2)
- POTTER OSSI-2 O.S.&Y SUPERSONIC SWITCH
- 1/2" AUTOMATIC AIR RELEASE VALVE
- 1" AMES 2000B BACKFLOW PREVENTER W/ 1" BALL VALVES (N.O.)
- 8" POTTER VSA-8 FLOW SWITCH
- 2" 4GT TEST AND DRAIN VALVE MODEL 10114 W/ RELIEF VALVE
- 648 CONCRETE INCREASER
- CONCRETE PUMP PAD (BY OTHERS)

N.O. = NORMALLY OPEN
N.C. = NORMALLY CLOSED

NOTE:
THE PUMP INSULATION TO COMPLY WITH NFPA 2010 2010 EDITION.
WHERE THE PUMP ROOM IS NOT CONSISTENT, ATTACHED, ANCHOR OR WEDGE SHALL BE REMOVED BY A SOURCE NOT EXCEEDING 125# SHALL BE REMOVED AT A POINT OF CONSIDERABLE ATTENTION.
THE FIRE PUMP SHALL BE MOUNTED ON THE FOLLOWING FOUNDATIONS:
1) W/OUT RAMMING
2) LOSS OF PHASE
3) PHASE REVERSAL
4) CONTROLLER CONNECTED TO METEORIC POWER

STANDARD OF PUMP OPERATION
FIRE PUMP OPERATING PRESSURE = 71 PSI + 90 PSI = 161 PSI
JOCKEY PUMP START = 171 PSI - 10 PSI = 161 PSI
FIRE PUMP START = 161 PSI - 5 PSI = 156 PSI
THE ABOVE SETTINGS ARE APPROXIMATE AND MAY VARY BASED ON THE ACTUAL FIELD TEST CONDITIONS.
WHEN SELECTED TO SHIP ACTUAL FIELD TEST CONDITIONS.
ALL ELECTRICAL WORKER OR OTHERS IN COMPLIANCE WITH ARTICLE 685 OF THE NATIONAL ELECTRICAL CODE (NEC 2010).

ALTHOUGH NOT SPECIFIED, SOME SPRINKLER HEADS HAVE BEEN SHOWN IN GENERAL LOCATION OF SPRINKLER HEADS. PIPING MAY VARY TO SHIP ACTUAL FIELD CONDITIONS.
ADDITIONAL CENTER LINE (CL) TO BE USED WITH NON-COMPOSITE ALL WIRING TO BE DONE BY OTHERS.
OWNER TO PROVIDE SUFFICIENT HEAD THROUGHOUT BUILDING TO PREVENT FREEZING OF WATER FILLED SPRINKLER PIPING AND EQUIPMENT (6" F.).

REQUIRED APPROVALS
OWNER / ARCHITECT
STATE FIRE MARSHAL
PORTLAND FIRE DEPARTMENT

DRAWN BY: GED
CHECKED BY: WAR
NCEI LEVEL III: CERT # 90388
CONTRACTOR LICENSE # 101
CONTRACTOR REG. # 388

PROJECT:
AMERICAN TIRE DISTRIBUTORS (OLD LL BEAN WAREHOUSE)
765 WARREN AVE. PORTLAND, MAINE

FIRE SPRINKLER CONTRACTOR:
EASTERN FIRE PROTECTION

CONTRACT WITH:
LANDRY/FRENCH CONSTRUCTION CO.
ALBION/LAWTON INDUSTRIAL
ALBANY, ALBANY, MAINE 04210

JOB NUMBER: AN-529-14
DATE: 1/29/13

Symbol	Count	Thread	K-factor	Temp	SNW	Description	Note
○	2	1/2"	5.6	200	7713	NEW 7700 1" BRASS UPRIGHT	ON LINE
○	10	1/2"	5.6	155	7713	NEW 7700 1" BRASS UPRIGHT /	ON LINE
○	27	1/2"	5.6	155	7713	EXISTING BRASS UPRIGHT	BELOW
○					XXXX	EXISTING CHROME PENDENT / BRASS UPRIGHT	BELOW
○					XXXX	EXISTING CHROME PENDENT / BRASS UPRIGHT	BELOW

Symbol	Count	Thread	K-factor	Temp	SNW	Description	Note
○	2	1/2"	5.6	200	7713	NEW 7700 1" BRASS UPRIGHT	ON LINE
○	10	1/2"	5.6	155	7713	NEW 7700 1" BRASS UPRIGHT /	ON LINE
○	27	1/2"	5.6	155	7713	EXISTING BRASS UPRIGHT	BELOW
○					XXXX	EXISTING CHROME PENDENT / BRASS UPRIGHT	BELOW
○					XXXX	EXISTING CHROME PENDENT / BRASS UPRIGHT	BELOW

Symbol	Count	Thread	K-factor	Temp	SNW	Description	Note
○	2	1/2"	5.6	200	7713	NEW 7700 1" BRASS UPRIGHT	ON LINE
○	10	1/2"	5.6	155	7713	NEW 7700 1" BRASS UPRIGHT /	ON LINE
○	27	1/2"	5.6	155	7713	EXISTING BRASS UPRIGHT	BELOW
○					XXXX	EXISTING CHROME PENDENT / BRASS UPRIGHT	BELOW
○					XXXX	EXISTING CHROME PENDENT / BRASS UPRIGHT	BELOW

Symbol	Count	Thread	K-factor	Temp	SNW	Description	Note
○	2	1/2"	5.6	200	7713	NEW 7700 1" BRASS UPRIGHT	ON LINE
○	10	1/2"	5.6	155	7713	NEW 7700 1" BRASS UPRIGHT /	ON LINE
○	27	1/2"	5.6	155	7713	EXISTING BRASS UPRIGHT	BELOW
○					XXXX	EXISTING CHROME PENDENT / BRASS UPRIGHT	BELOW
○					XXXX	EXISTING CHROME PENDENT / BRASS UPRIGHT	BELOW

Symbol	Count	Thread	K-factor	Temp	SNW	Description	Note
○	2	1/2"	5.6	200	7713	NEW 7700 1" BRASS UPRIGHT	ON LINE
○	10	1/2"	5.6	155	7713	NEW 7700 1" BRASS UPRIGHT /	ON LINE
○	27	1/2"	5.6	155	7713	EXISTING BRASS UPRIGHT	BELOW
○					XXXX	EXISTING CHROME PENDENT / BRASS UPRIGHT	BELOW
○					XXXX	EXISTING CHROME PENDENT / BRASS UPRIGHT	BELOW

Symbol	Count	Thread	K-factor	Temp	SNW	Description	Note
○	2	1/2"	5.6	200	7713	NEW 7700 1" BRASS UPRIGHT	ON LINE
○	10	1/2"	5.6	155	7713	NEW 7700 1" BRASS UPRIGHT /	ON LINE
○	27	1/2"	5.6	155	7713	EXISTING BRASS UPRIGHT	BELOW
○					XXXX	EXISTING CHROME PENDENT / BRASS UPRIGHT	BELOW
○					XXXX	EXISTING CHROME PENDENT / BRASS UPRIGHT	BELOW