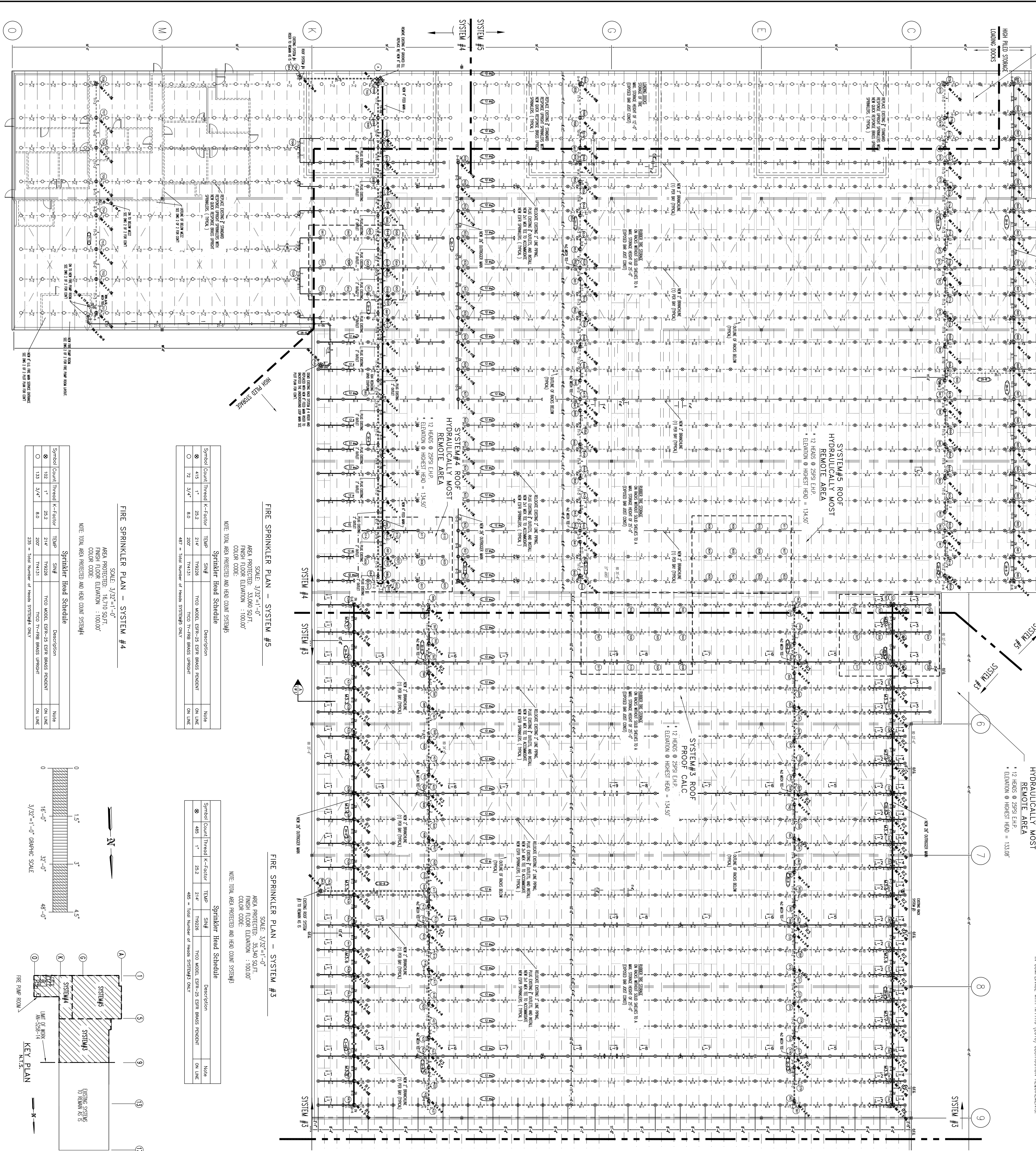


NOTE: HIGH PILED STORAGE DESIGN CORRECTED
 EXTENDED 15' FROM BACKS PER NFPA13 (2013)
 SECTION 11.12



NOTE: ALL MECHANICAL, ELECTRICAL, AND HEATING SYSTEMS TO BE INSTALLED
 IN COMPLIANCE WITH NFPA13 (2013) OBSTRUCTION REQUIREMENTS.

HYDRAULIC DATA NAMEPLATE
 TO BE WORKED BY DESIGNER

THIS BUILDING IS PROTECTED BY A HYDRAULICALLY DESIGNED AUTOMATIC SPRINKLER SYSTEM	LOCATION: SYSTEM#4 ROOF
No. of Sprinklers:	12
Basics of Design:	289SI
1. Density (GPM/FT ²):	12 HEADS
2. Sprinkler Area of Protection (SQ. FT.):	12 HEADS
3. System Demand:	12 HEADS
4. Water Flow Rate (GPM):	1837.6 GPM
5. Hydraulic Pressure at Sprinkler (PSI):	123.889 PSI
6. Pipe Size (IN):	1.5

HYDRAULIC DATA NAMEPLATE
 TO BE WORKED BY DESIGNER

THIS BUILDING IS PROTECTED BY A HYDRAULICALLY DESIGNED AUTOMATIC SPRINKLER SYSTEM	LOCATION: SYSTEM#5 ROOF
No. of Sprinklers:	12
Basics of Design:	289SI
1. Density (GPM/FT ²):	12 HEADS
2. Sprinkler Area of Protection (SQ. FT.):	12 HEADS
3. System Demand:	12 HEADS
4. Water Flow Rate (GPM):	1783.19 GPM
5. Hydraulic Pressure at Sprinkler (PSI):	131.188 PSI
6. Pipe Size (IN):	1.5

HYDRAULIC DATA NAMEPLATE
 TO BE WORKED BY DESIGNER

THIS BUILDING IS PROTECTED BY A HYDRAULICALLY DESIGNED AUTOMATIC SPRINKLER SYSTEM	LOCATION: SYSTEM#3 ROOF
No. of Sprinklers:	12
Basics of Design:	289SI
1. Density (GPM/FT ²):	12 HEADS
2. Sprinkler Area of Protection (SQ. FT.):	12 HEADS
3. System Demand:	12 HEADS
4. Water Flow Rate (GPM):	1923.2 GPM
5. Hydraulic Pressure at Sprinkler (PSI):	123.889 PSI
6. Pipe Size (IN):	1.5

HYDRAULIC DATA NAMEPLATE
 TO BE WORKED BY DESIGNER

THIS BUILDING IS PROTECTED BY A HYDRAULICALLY DESIGNED AUTOMATIC SPRINKLER SYSTEM	LOCATION: SYSTEM#2 ROOF
No. of Sprinklers:	12
Basics of Design:	289SI
1. Density (GPM/FT ²):	12 HEADS
2. Sprinkler Area of Protection (SQ. FT.):	12 HEADS
3. System Demand:	12 HEADS
4. Water Flow Rate (GPM):	1837.6 GPM
5. Hydraulic Pressure at Sprinkler (PSI):	123.889 PSI
6. Pipe Size (IN):	1.5

GENERAL NOTES

- SPRINKLER SYSTEM INSTALLATION TO COMPLY WITH NFPA 13, 20 (2013).
- NEW 800 LINE PIPING TO BE PER S13 SYSTEM WITH GROoved ENDS AND WELDED OUTLETS JOINED BY MECHANICAL COUPLERS.
- NEW MAIN PIPING TO BE PER S13 SYSTEM WITH GROoved ENDS AND WELDED OUTLETS JOINED BY MECHANICAL COUPLERS.
- NEW BRANCHED LINE PIPING TO BE PER S13, S1010, 40 JOINED BY THREADED DUCTILE IRON FITTINGS.
- ALL DIMENSIONS ARE SHOWN FOR GENERAL LOCATION OF SPRINKLERS PER NFPA13 (2013).
- WORK TO BE DONE BY OTHERS.
- OWNER TO REMOVE SPRINKLER HEAD THROUGHOUT BUILDING TO EXPOSE THE LIFT TO BE USED FOR SPARKER PIPING AND EQUIPMENT (4" DIA.).
- ALL WORKING TO BE DONE BY OTHERS.

REQUIRED APPROVALS

OWNER / ARCHITECT
 STATE FIRE MARSHAL
 PORTLAND FIRE DEPARTMENT

REVISIONS

NO.	REVISIONS
1	AS SHOWN

CONTRACT WITH:
LANDRY/FRENCH CONSTRUCTION CO.
 SCARBOROUGH, MAINE

CONTRACT NO.: 1792/25

DWG. NO.: 1 OF 2

DATE: 1/29/15

AMERICAN TIRE DISTRIBUTORS (OLD LL BEAN WAREHOUSE)
 765 WARREN AVE.
 PORTLAND, MAINE

EASTERN FIRE PROTECTION
 AUBURN/LEWISTON INDUSTRIAL AIRPARK, AUBURN, MAINE 04210

CONTRACTOR: LANDRY/FRENCH CONSTRUCTION CO.

SCALE: AS SHOWN

FIRE SPRINKLER PLAN - SYSTEM #4
 SCALE: 3/32"=1'-0"
 AREA PROTECTED: 33,000 SQ. FT.
 FINISH FLOOR ELEVATION: 100.00'
 COLOR CODE:

Sprinkler Head Schedule

Symbol	Count	Thread	K-Factor	TEMP	SNW	DESCRIPTION	NOTE
⊙	415	1"	25.2	214°	TW228	TICO MODEL ESPR-25 ESTER BRASS PENDANT	ON LINE
○	12	3/4"	8.0	200°	TK4131	TICO T7-F18B BRASS UPRIGHT	ON LINE

NOTE: TOTAL AREA PROTECTED AND HEAD COUNT SYSTEM#4

FIRE SPRINKLER PLAN - SYSTEM #5
 SCALE: 3/32"=1'-0"
 AREA PROTECTED: 33,000 SQ. FT.
 FINISH FLOOR ELEVATION: 100.00'
 COLOR CODE:

Sprinkler Head Schedule

Symbol	Count	Thread	K-Factor	TEMP	SNW	DESCRIPTION	NOTE
⊙	415	1"	25.2	214°	TW228	TICO MODEL ESPR-25 ESTER BRASS PENDANT	ON LINE
○	12	3/4"	8.0	200°	TK4131	TICO T7-F18B BRASS UPRIGHT	ON LINE

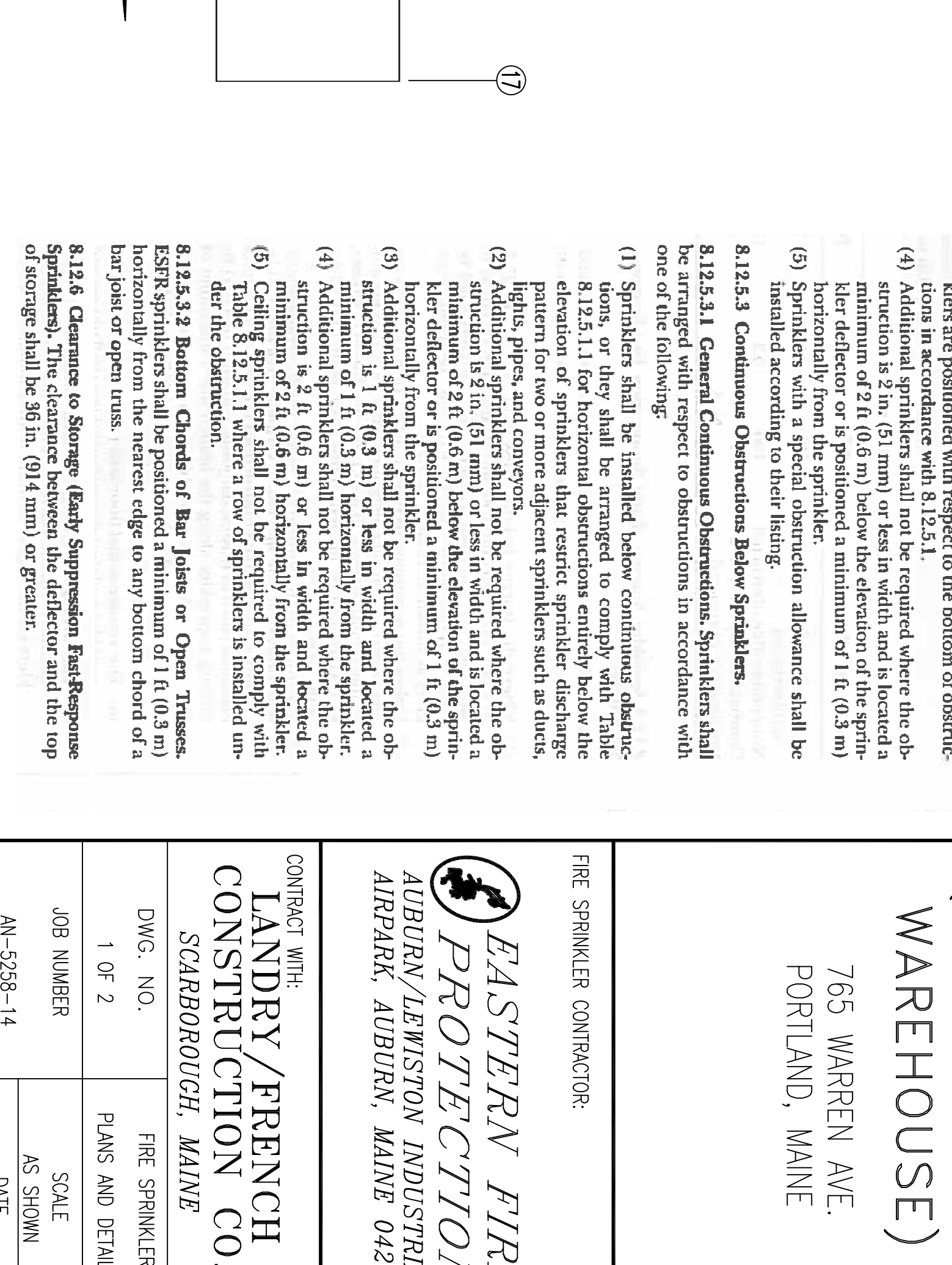
NOTE: TOTAL AREA PROTECTED AND HEAD COUNT SYSTEM#5

FIRE SPRINKLER PLAN - SYSTEM #3
 SCALE: 3/32"=1'-0"
 AREA PROTECTED: 33,000 SQ. FT.
 FINISH FLOOR ELEVATION: 100.00'
 COLOR CODE:

Sprinkler Head Schedule

Symbol	Count	Thread	K-Factor	TEMP	SNW	DESCRIPTION	NOTE
⊙	415	1"	25.2	214°	TW228	TICO MODEL ESPR-25 ESTER BRASS PENDANT	ON LINE
○	12	3/4"	8.0	200°	TK4131	TICO T7-F18B BRASS UPRIGHT	ON LINE

NOTE: TOTAL AREA PROTECTED AND HEAD COUNT SYSTEM#3



8.12.6 Clearance to Storage (Early Suppression FastResponse)
 8.12.6.1 Additional sprinklers shall be provided where the obstruction is 16" (414 mm) or greater from the ceiling edge of the obstruction.

8.12.6.2 Clearance to Storage (Early Suppression FastResponse)
 8.12.6.2.1 Additional sprinklers shall be provided where the obstruction is 16" (414 mm) or greater from the ceiling edge of the obstruction.