

GENERAL CONTRACTOR

STRUCTURAL ENGINEER

MEP ENGINEER

CLIENT

CBRE | Boulos Asset Management
 1 Canal Plaza
 Portland, ME 04101

PROJECT
**Existing Warehouse
 Office Expansion**
 765 Warren Avenue
 Portland, ME 04101
 CBL: 316 A003001



ISSUED FOR PERMIT

INFORMATION

Path: M:/boulos/warren

Issue Date: 12/17/14

Drawn By: djg

Checked By:

Revision:

- 1.
- 2.
- 3.
- 4.

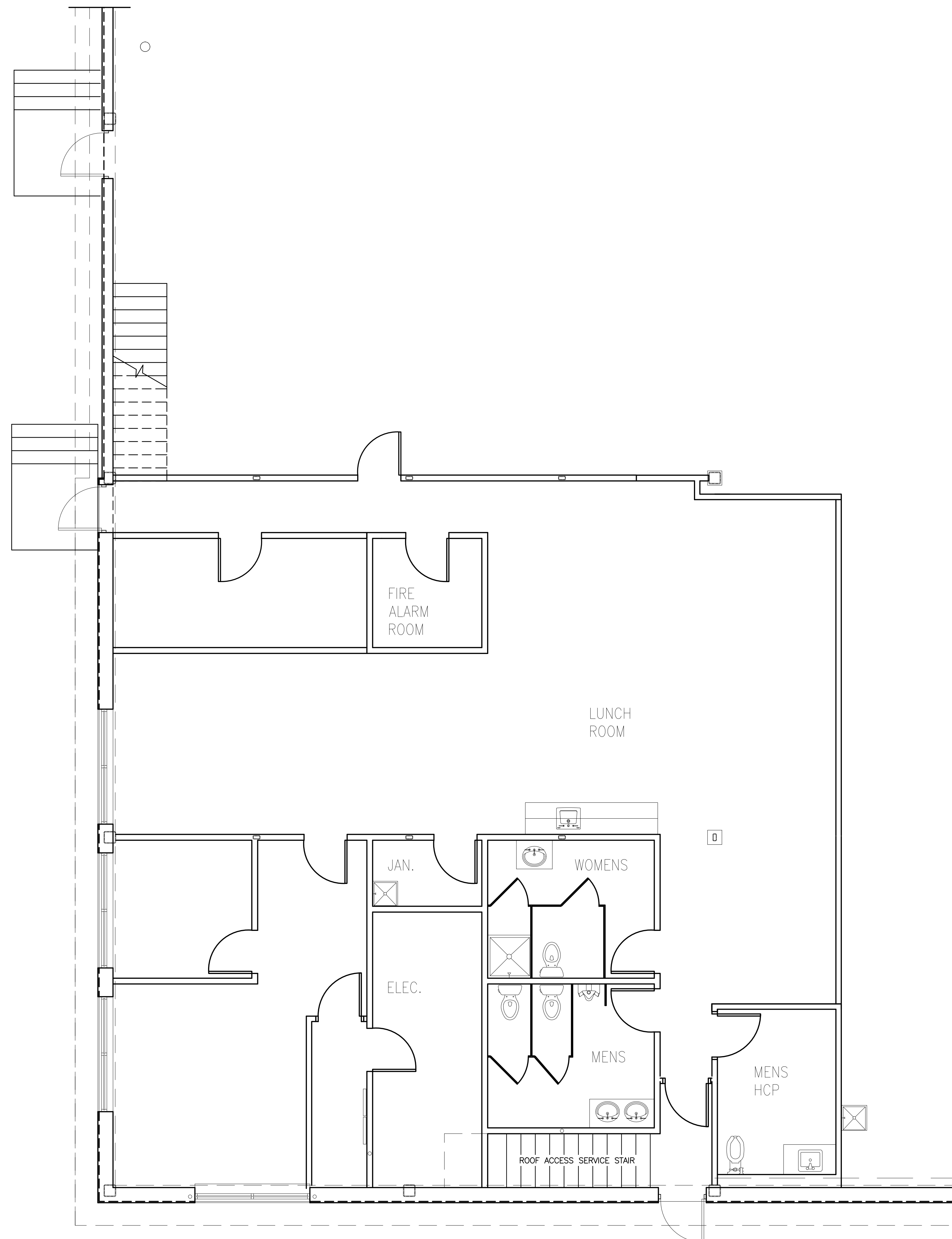
TITLE

**EXISTING CONDITIONS
 PLAN**

SCALE

1/4"=1'-0"

© 2014 Graham Architects. All rights reserved. Information, material, and designs in this document are proprietary to and owned by Graham Architects, and may not be disclosed to any third party, reproduced, posted on a global computer information network, or distributed in any way without the written consent from Graham Architects.



1 1/4"=1'-0" PARTIAL PLAN - EXISTING CONDITIONS

DO NOT SCALE DRAWINGS

EX-1