

5	3"=1'-0"	WALL TYPE 2	4	3"=1'-0"	WALL TYPE 1
---	----------	-------------	---	----------	-------------

OCCUPANT LOAD:

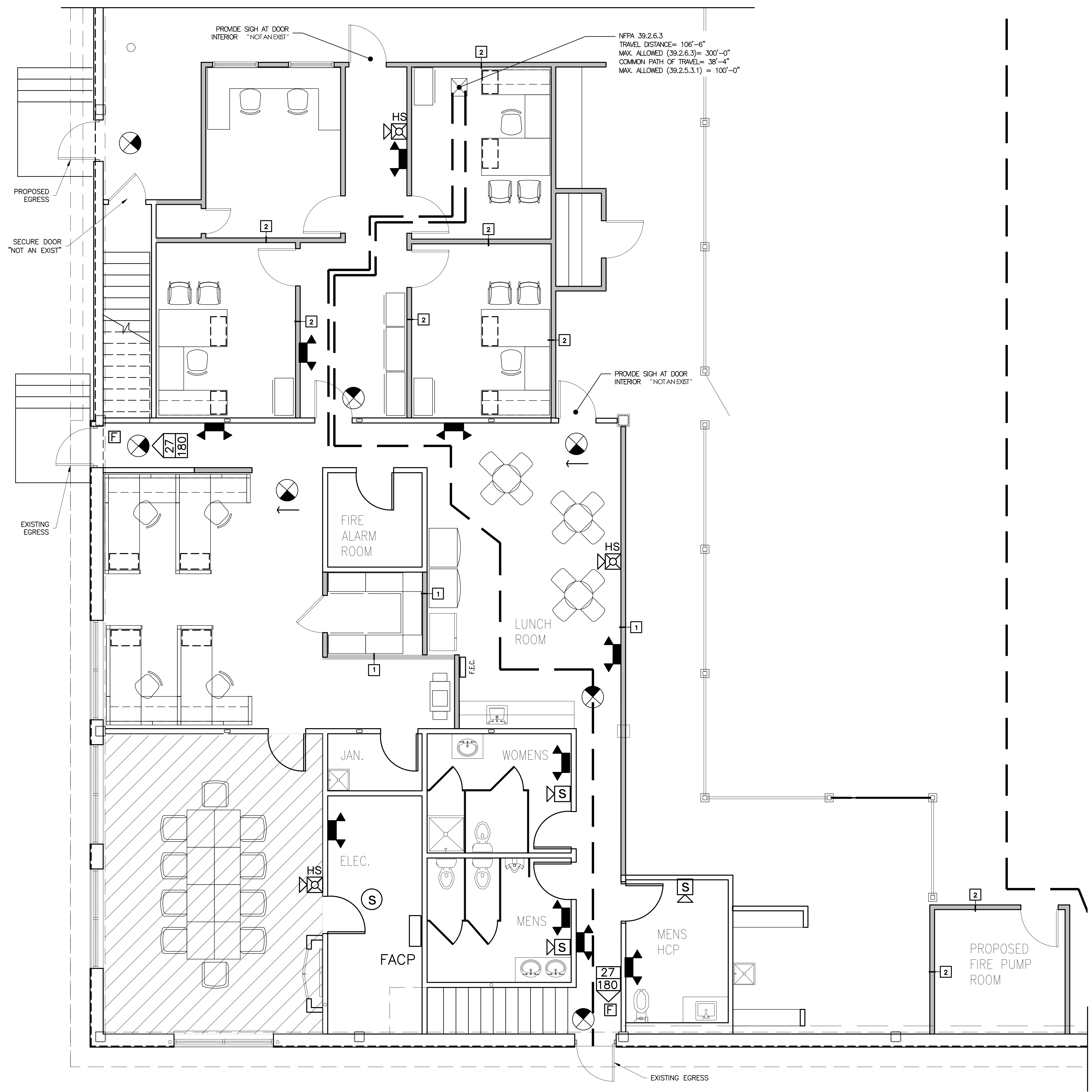
USE	FLOOR AREA	OCC. LOAD FACTOR (SF/OCC)	OCC. LOAD
OFFICE	2,570	100 GROSS	26
CONFERENCE	422	15 NET	28
			TOTAL = 54

3	NTS	LEGEND
---	-----	--------

LIFE SAFETY SYMBOLS:

- NTS TRAVEL DISTANCE (FROM FURTHEST POINT)
- OCCUPANCY LOAD
- OCCUPANT LOAD EGRESS CAPACITY
- OFFICE USE
- CONFERENCE USE
- DIRECTIONAL EXIT SIGN WALL MOUNT & CEILING MOUNT
- FULLY-RECESSED FIRE EXTINGUISHER CABINET
- EMERGENCY LIGHTS, SEE ELECTRICAL DRAWINGS
- FIRE ALARM AUDIO/VISUAL ALARM, 6'-8" AFF, WITH "C" CEILING MOUNTED
- FIRE ALARM VISUAL ALARM, 6'-8" AFF, WITH "C" CEILING MOUNTED
- FIRE ALARM MANUAL PULL STATION
- FIRE ALARM CONTROL PANEL

2	NTS	LEGEND
---	-----	--------



1	1/4"=1'-0"	EGRESS DIAGRAM - WAREHOUSE OFFICE SPACE
---	------------	---

DO NOT SCALE DRAWINGS

GENERAL CONTRACTOR

STRUCTURAL ENGINEER

MEP ENGINEER

CLIENT

CBRE | Boulos Asset Management
 1 Canal Plaza
 Portland, ME 04101

PROJECT
**Existing Warehouse
 Office Expansion**
 765 Warren Avenue
 Portland, ME 04101
 CBL: 316 A003001



ISSUED FOR PERMIT

INFORMATION

Path: M:/boulos/warren
 Issue Date: 12/17/14
 Drawn By: dijg
 Checked By:
 Revision:
 1.
 2.
 3.
 4.

TITLE

**LIFE SAFETY &
 EGRESS PLAN**

SCALE
 AS NOTED

© 2014 Graham Architects. All rights reserved. Information, material, and designs in this document are proprietary to and owned by Graham Architects, and may not be disclosed to any third party, reproduced, posted on a global computer information network, or distributed in any way without the written consent from Graham Architects.