

GENERAL CONTRACTOR

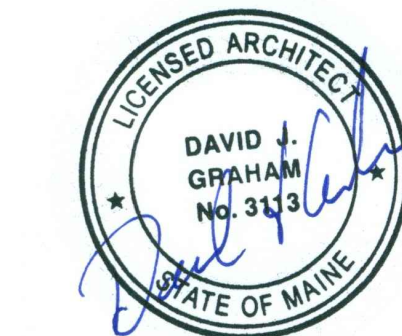
STRUCTURAL ENGINEER

MEP ENGINEER

CLIENT

CBRE | Boulos Asset Management
 1 Canal Plaza
 Portland, ME 04101

PROJECT
**Existing Warehouse
 Office Expansion**
 765 Warren Avenue
 Portland, ME 04101
 CBL: 316 A003001



ISSUED FOR PERMIT

INFORMATION

Path: M:/boulos/warren

Issue Date: 12/17/14

Drawn By: djg

Checked By:

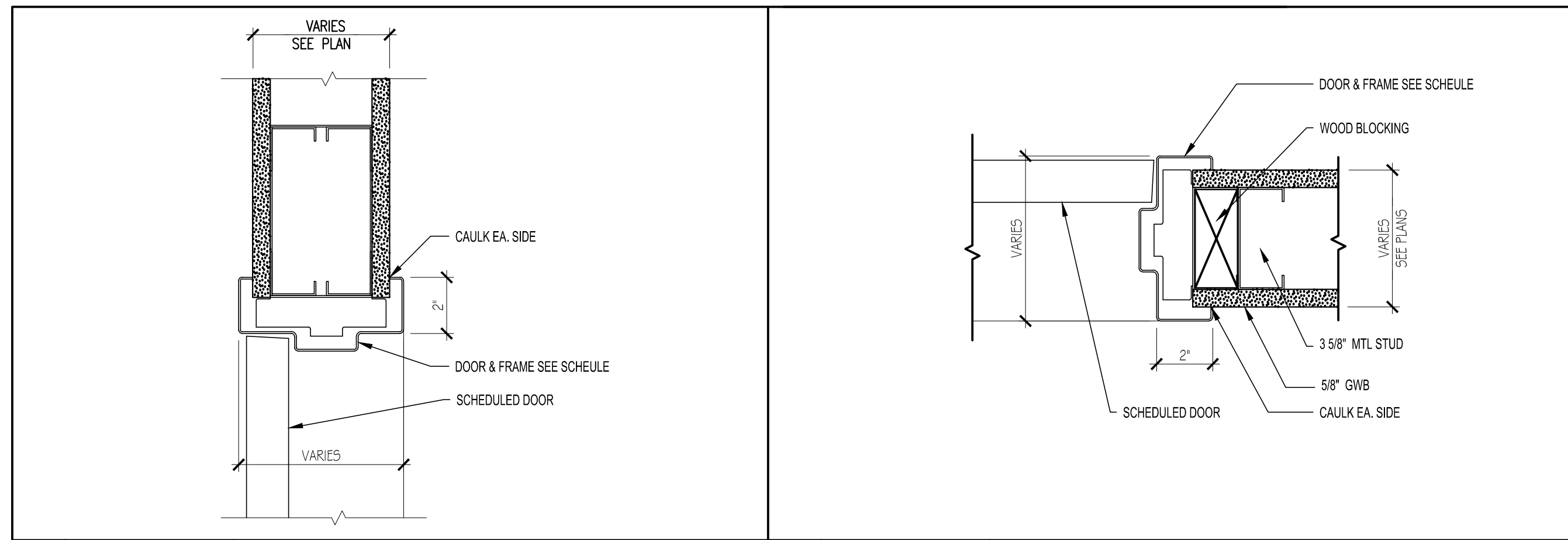
Revision:

- 1.
- 2.
- 3.
- 4.

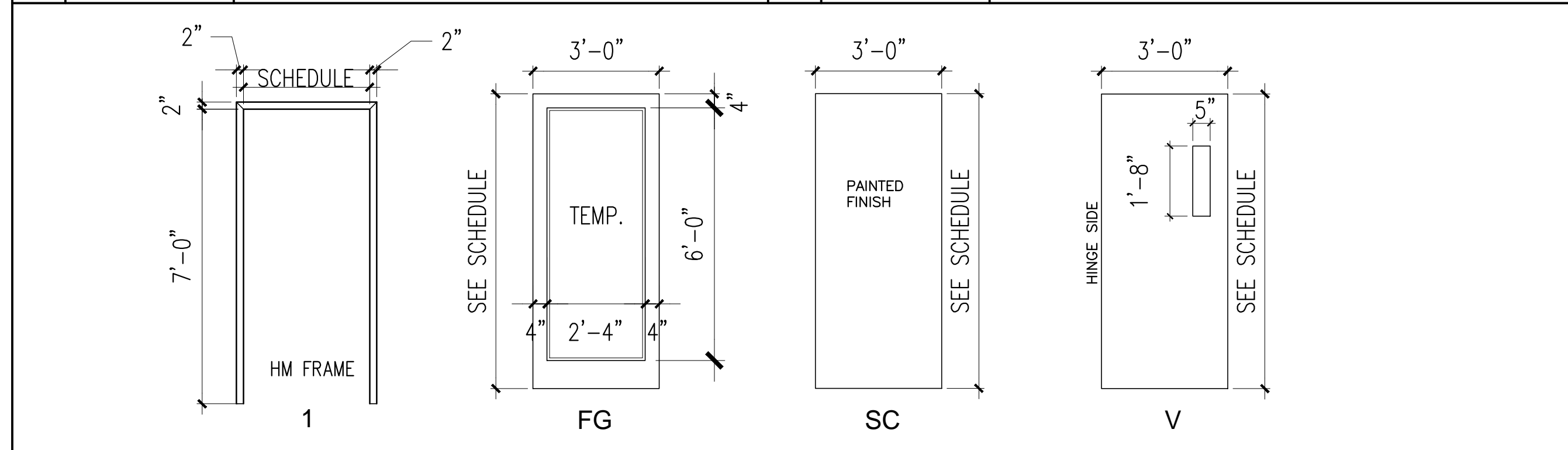
TITLE
**REFLECTED CEILING
 PLAN & DOOR
 SCHEDULE**

SCALE
 1/4"=1'-0"

© 2014 Graham Architects. All rights reserved.
 Information, material, and designs in this document are
 proprietary to and owned by Graham Architects and
 may not be disclosed to any third party, reproduced,
 posted on a global computer information network, or
 distributed in any way without the written consent from
 Graham Architects.



7 NTS HEAD DETAIL 6 NTS JAMB DETAIL



5 NTS DOOR TYPES AND DOOR FRAMES

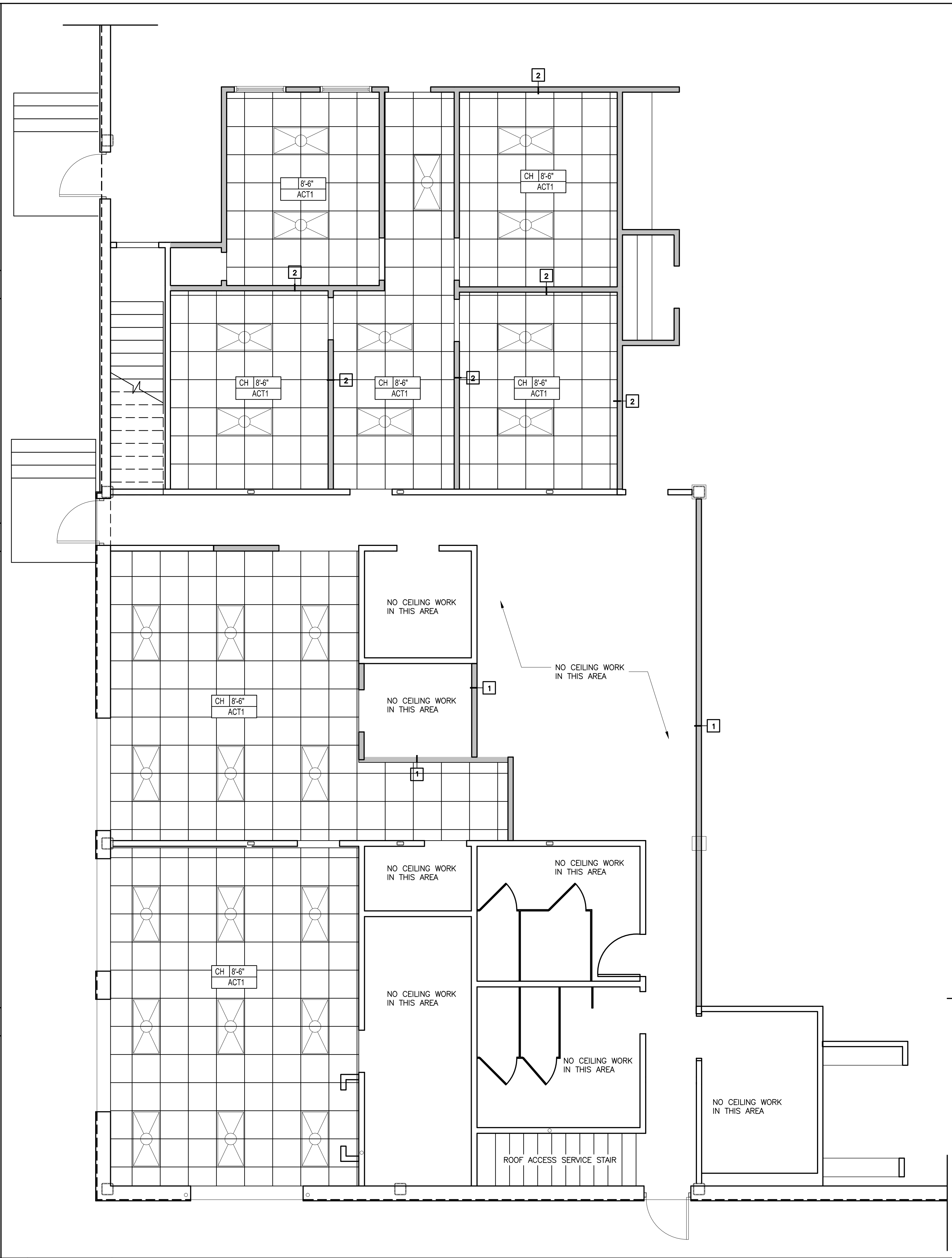
DOOR NUMBER	DOOR				FRAME					HWS	FIRE RATING (MIN.)	REMARKS
	SIZE	MATERIAL	ELEVATION	GLAZING	MATERIAL	ELEVATION	HEAD	JAMB	SILL			
01	3'-0" x 7'-0" x 1-3/4"	SC/PT	SC	-	HM	1	7/A2	6/A2	-	2	20MIN	CLOSER
02	3'-0" x 7'-0" x 1-3/4"	STL	SC	-	HM	1	7/A2	6/A2	-	1.6	45MIN	
03	3'-0" x 7'-0" x 1-3/4"	SC/PT	SC	-	HM	1	7/A2	6/A2	-	2	20MIN	
04	3'-0" x 7'-0" x 1-3/4"	SC/PT	SC	-	HM	1	7/A2	6/A2	-	2	20MIN	
05	3'-0" x 7'-0" x 1-3/4"	SC/PT	SC	-	HM	1	7/A2	6/A2	-	2	20MIN	
06	3'-0" x 7'-0" x 1-3/4"	SC/PT	SC	-	HM	1	7/A2	6/A2	-	2	20MIN	
07	3'-0" x 7'-0" x 1-3/4"	SC/PT	SC	-	HM	1	7/A2	6/A2	-	2	20MIN	
08	3'-0" x 7'-0" x 1-3/4"	SC/PT	SC	-	HM	1	7/A2	6/A2	-	2	20MIN	
09	3'-0" x 7'-0" x 1-3/4"	STL	SC	-	HM	1	7/A2	6/A2	-	1.6	45MIN	CLOSER
10	3'-0" x 7'-0" x 1-3/4"	STL	V	TEMP.	HM	1	7/A2	6/A2	-	1.6	-	CLOSER, EGRESS HARDWARE
11	3'-0" x 7'-0" x 1-3/4"	SC/PT	SC	-	HM	1	7/A2	6/A2	-	1.6	-	CLOSER
12	3'-0" x 7'-0" x 1-3/4"	STL	SC	-	HM	1	7/A2	6/A2	-	1.2,6	45MIN	CLOSER

1. SYMBOL "✓" SHOWN ON SCHEDULE INDICATES A REPEAT OF A PREVIOUS REFERENCE ON THE SCHEDULE.
2. ALL DOORS ARE 1-3/4" THICK UNLESS OTHERWISE NOTED
3. DOOR CONSTRUCTION: TYPICAL - SC - SOLID CORE HC - HOLLOW CORE HM - HOLLOW METAL AL - ALUMINUM & GLASS
4. FINISH TYPICAL - WV - WOOD VENEER PL - PLASTIC LAMINATE MP - METAL PAINTED AP - ALUMINUM PAINTED PT - PAINTED
5. GLASS TYPICAL - CW - CLEAR WIRE CP - CLEAR PLATE TP - TEMPERED LG - LEADED GLASS
6. FRAME TYPICAL - FF - FLUSH FRAME AL - ALUMINUM HM - HOLLOW METAL WD - WOOD AP - ALUMINUM PAINTED
7. MAXIMUM GLASS AREA FOR 45 MIN. AND 20 MIN. DOOR SHALL NOT EXCEED 1296 SQ.IN. AND HAVE A MAX. LITE DIMENSION OF 54". MAXIMUM GLASS AREA FOR 90 MIN. DOOR SHALL BE 100 SQ.IN.
8. CONTRACTOR TO VERIFY EXISTING CONDITIONS OF ALL PROPOSED MASONRY OPENINGS PRIOR TO CUTTING MASONRY. ARCHITECT IS TO BE NOTIFIED SHOULD ANY OPENINGS REQUIRE ADJUSTMENT.

4 NTS DOOR SCHEDULE AND NOTES

- GENERAL REFLECTED CEILING NOTES**
1. CONTRACTOR TO REMOVE AND DISPOSE OF ALL CEILING TILES AND TRACK.
 2. COORDINATE THE WORK OF ALL TRADES INVOLVED IN THE CEILING WORK TO INSURE CLEARANCES FOR FIXTURES, DUCTS, PIPING, CEILING SUSPENSION SYSTEM, ETC. NECESSARY TO MAINTAIN THE FINISHED CEILING HEIGHTS INDICATED ON THE CONTRACT DOCUMENTS.
 3. SUPPLY AND INSTALL ALL SUSPENDED TRACK AND MATERIAL REQUIRED TO COMPLETE THE WORK AS INDICATED ON THE DRAWINGS. PROVIDE ALL TIES FOR LIGHT FIXTURES, EXIT SIGNS AND OTHER CEILING/ SOFFIT ELEMENTS FOR SECURE ATTACHMENT OF GENERAL CONSTRUCTION.
 4. LIGHTING TO BE LOCATED AS BEST AS POSSIBLE WITH PROPOSED LAYOUT.
 5. CEILING TILES TO BE ARMSTRONG CIRRUS SECOND LOOK - II, 513.
- HARDWARE NOTES**
- A.) ALL HARDWARE SHALL COMPLY WITH A.D.A. REQUIREMENTS AND STANDARDS.
 - B.) G.C. TO REPLACE ALL EXISTING HARDWARE TO MATCH.
 - C.) G.C. TO PROVIDE CLOSURE ON ALL EXISTING DOORS WHERE REQUIRED. VERIFY WITH ARCHITECT.
 - D.) HARDWARE FINISH - "US26D DULL CHROME", VERIFY WITH OWNER.
1. LOCK SET, KEY TO CLIENT SYSTEM
 2. PASSAGE SET
 3. PRIVACY SET
 4. FIXED LEVER
 5. PEENED FOR ADA COMPLIANCE
 6. CLOSER

3 NTS CEILING NOTES 2 NTS HARDWARE



1 1/4"=1'-0" REFLECTED CEILING PLAN

DO NOT SCALE DRAWINGS