

BUILDING CODE DATA

Current Codes Used for Code Information
 International Building Code 2009
 IBC Maine Amendment 2009
 International Energy Conservation Code 2009
 NFPA 101 2009

ADA Standards for Accessible Design 2010

OCCUPANCY - MIXED OCCUPANCY
STORAGE GROUP S-2
BUSINESS GROUP B

OCCUPANT LOAD

WAREHOUSE : 67,895 GROSS S.F. /500 =
 136 PPL
 BUSINESS: 1,494 S.F. /100 =
 15 PPL

TYPE OF CONSTRUCTION IIB - SPRINKLED

INTERIOR FINISH CLASSIFICATION
OFFICE ROOMS & SPACES - CLASS C

NON-SEPARATED OCCUPANCY

FULLY SPRINKLED AND MONITORED BUILDING

EGRESS
BUSINESS OCCUPANCY
 COMMON PATH LIMIT: 100 FT.
 TRAVEL DISTANCE LIMIT: 300 FT

LOW HAZARD STORAGE OCCUPANCY
 COMMON PATH LIMIT: NR.
 TRAVEL DISTANCE LIMIT: NR
 NR:NOT REQUIRED



59 Mills Road Kennebunkport, ME 04046

o:207.967.8850 f:207.967.8851
 www.grahamarchitects.com

PROJECT
Allagash Brewing
Co.Storage/
Accessory Office

764 Warren Avenue
 Portland, Maine 04101
 CBL: 316 A003001

CLIENT
 CBRE | Boulos Property Management
 1 Canal Plaza, Suite 500
 Portland, ME 04101

INFORMATION

Path: m:\boulos\warren\
 Issue Date: 05.29.13
 Drawn By: DG
 Checked By: DG

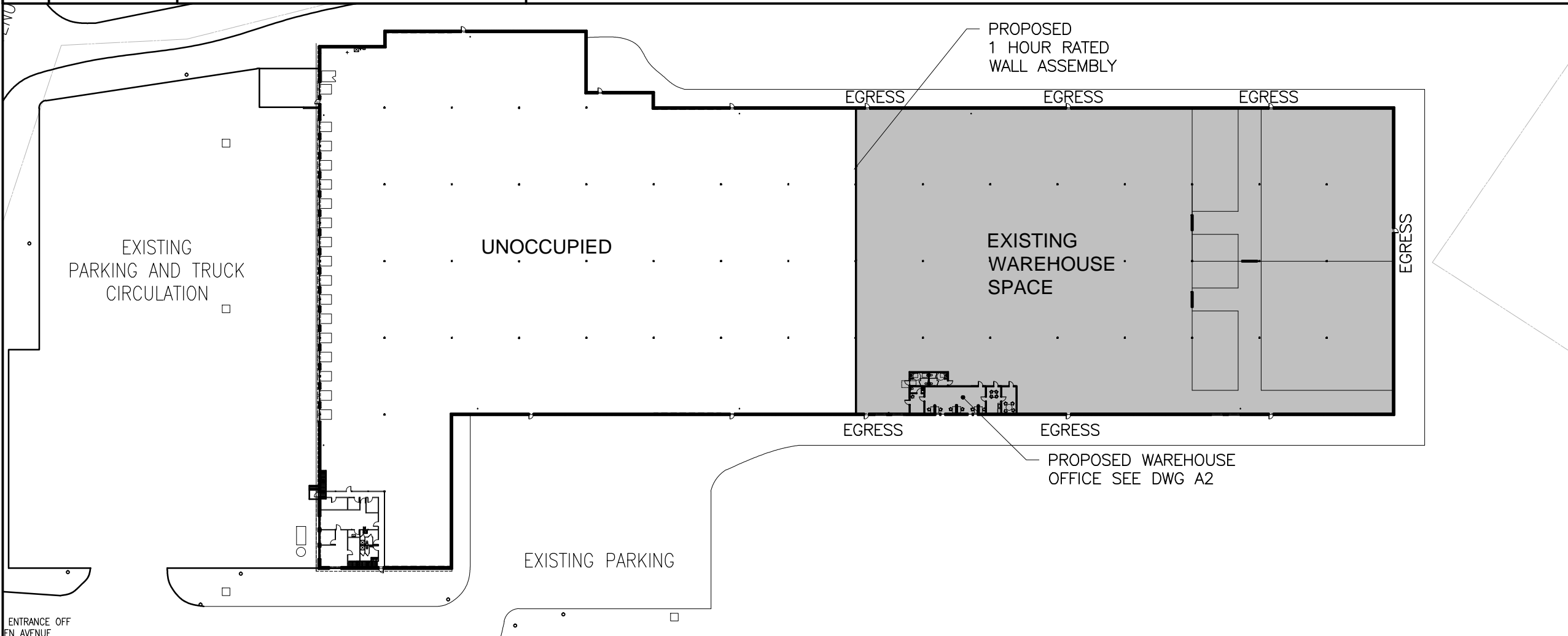


TITLE
KEY PLAN &
CODE DATA

SCALE: 1/4"=1'-0"

©2013 Graham Architects All rights reserved. Information, material, and designs in this document are proprietary to and owned by Graham Architects and may not be disclosed to any third party, reproduced, posted on a global computer information network, or distributed in any way without the written consent from Graham Architects.

2 N.T.S LOCUS MAP



5/29/2013 4:37:57 PM BUILDING KEY PLAN

A1