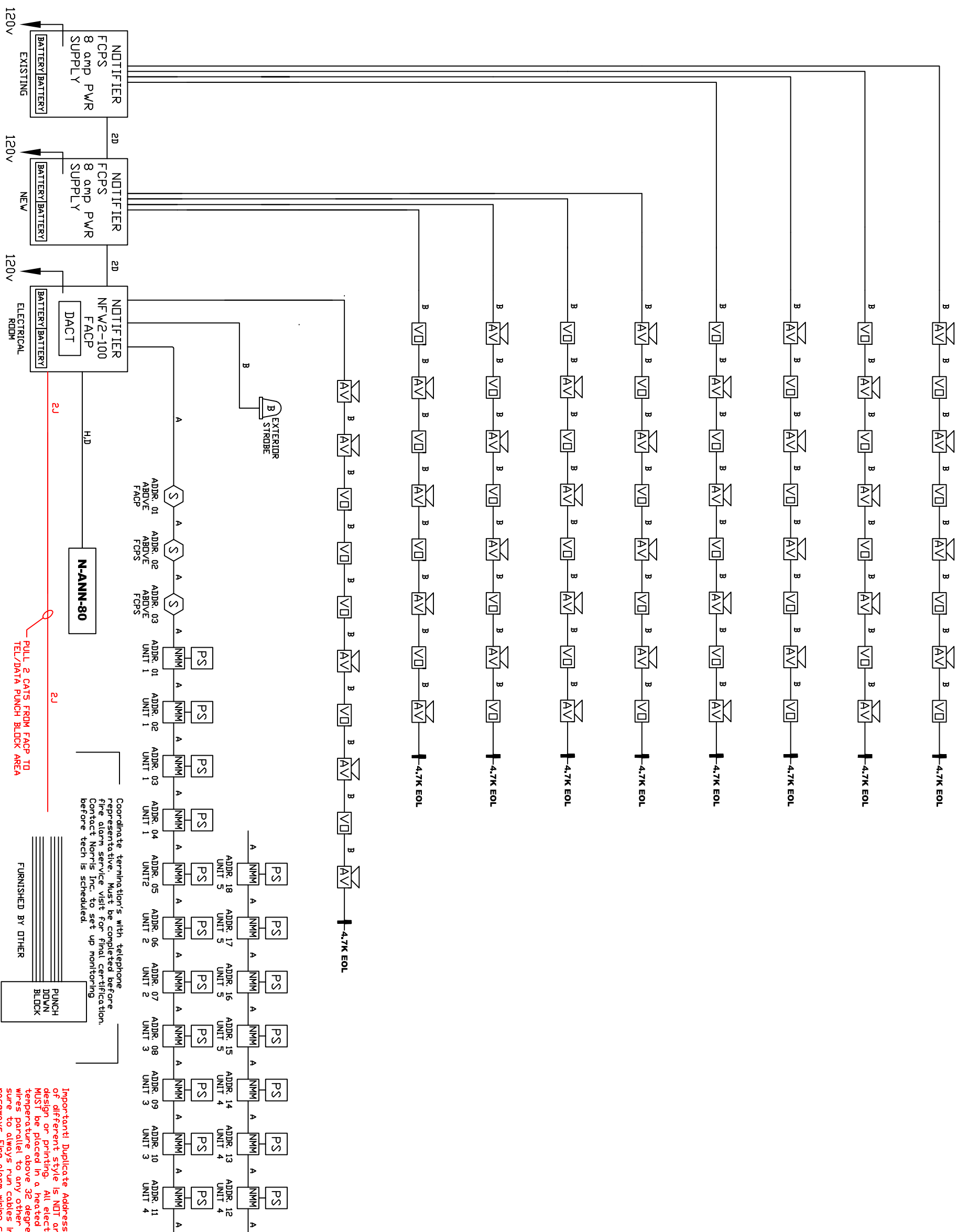


**\*Important! Securing Screw  
MUST be installed in top of  
Device on Exceder series HSR  
and STR Audio Visuals.**

**Important! Wiring connections  
must have correct polarity.**



**LEGEND**

- MOUNTING HEIGHT**
- 48 INCHES
  - PS PULL STATION
  - S SMOKE DETECTOR
  - R HEAT DETECTOR RATE OF RISE
  - F HEAT DETECTOR FIXED TEMP
  - RT REMOTE TEST/INDICATOR
  - DS DUCT SMOKE DETECTOR
  - VD VISUAL ONLY
- 80 INCHES
  - AV AUDIO / VISUAL
  - NZM ZONE MODULE
  - NC-100 CONTROL MODULE
  - NMM MONITOR MODULE 100=4 SQUARE, 100p=mlkmod
  - NC-100- RELAY MODULE
  - STS SPRINKLER TAMPER
  - SPS SPRINKLER PRESSURE
  - SFS SPRINKLER FLOW
  - B FLASHING STROBE

This drawing is a typical device layout, wiring is shown diagrammatically only. This drawing has been provided as an example ONLY. Riser does not necessarily indicate all devices and appliances. See floor plans and specification for location and quantities. The purchaser must accurately layout the initiating and notification devices in their proper zones/circuit. Note: All signal circuits have a 2.5 amp load limitation and a combined load limitation of 3.0 amps or 6.0 amps if XRM-24 is added to the panel. There can be 4 Class B rac circuits or 2 class A rac circuits. REMOTE power supply has a 3.0 amps limitation per circuit and an 8.0 amp combined limitation for all 4 circuits. (see chart below for current vs. candela ratings)

Room Size	Candela Rating	Load (amps)
20' x 20'	15 cd	0.08 amps
28' x 28'	30 cd	0.10 amps
45' x 45'	75 cd	0.15 amps
54' x 54'	110 cd	0.20 amps

- A 1 PR #12 AVG TWISTED-PAIR UNSHIELDED CABLE FPL
- GENESIS 4515, BELDEN 6020UL (UP to 10,000 f+t)
- A 1 PR #14 AVG TWISTED-PAIR UNSHIELDED CABLE FPL
- GENESIS 4513, BELDEN 6120UL (UP to 8,000 f+t)
- A 1 PR #16 AVG TWISTED-PAIR UNSHIELDED CABLE FPL
- GENESIS 4511, BELDEN 6220UL (UP to 4,500 f+t)
- B 1 PR #12 AVG FPL CABLE
- D 1 PR #14 AVG FPL CABLE
- E 1 PR #16 AVG FPL CABLE
- F 2c #12 AVG CABLE
- G 2c #14 AVG CABLE
- H 1 PR #16 AVG TWISTED-PAIR SHIELDED CABLE FPL
- J 1 CAT5 CABLE

Coordinate termination's with telephone representative. Must be completed before fire alarm service visit for final certification. Contact Norris Inc. to set up monitoring before tech is scheduled.

FURNISHED BY OTHER

REVISION 1 DATE: 4/18/2013

REVISION 0 SUBMITTAL DATE: 4/18/2013

SYSTEM WIRING RISER

PROJECT NAME: **765 WARREN AVE.**  
Portland, MAINE

SCALE NTS

BY: **ZAD**

CK BY:

SAVED AS:

2257 BROADWAY, SO. PORTLAND, MAINE

**Important! Duplicate Addresses on devices of different style is NOT an error in design or printing. All electronic devices MUST be placed in a heated room with temperature above 32 degrees. Never run wires parallel to any other wiring. Make sure to always run cables in separate raceways. Fire alarm wiring can emit noise that may affect other devices. Shielded cable can be used if cable is run near sensitive equipment**