

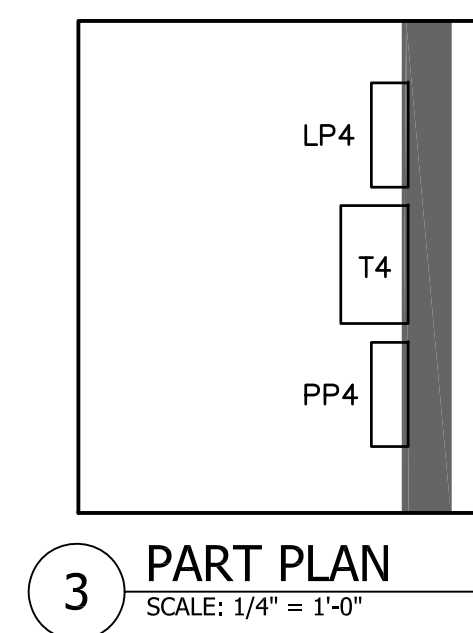
7 METERING SWITCHGEAR ELEVATION
SCALE: 1/2" = 1'-0"

KEYED NOTES:

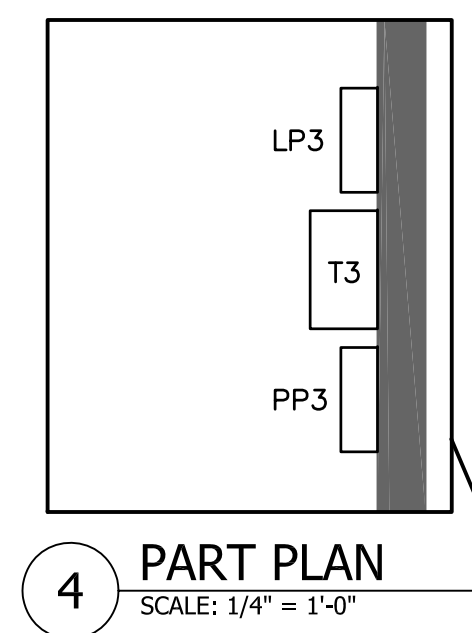
- ① EXISTING HVAC ROOFTOP UNIT. COORDINATE EXACT LOCATION IN FIELD. REWIRE TO PANEL LP3 - CURRENTLY FED FROM THIS LOCATION. (NOTE THAT THIS EQUIPMENT IS TO BE REMOVED IN FUTURE BY OTHERS.)
- ② EXISTING HVAC ROOFTOP UNIT. COORDINATE EXACT LOCATION IN FIELD. REWIRE TO PANEL LP1 - CURRENTLY FED FROM THIS LOCATION. (NOTE THAT THIS EQUIPMENT IS TO BE REMOVED IN FUTURE BY OTHERS.)
- ③ EXISTING PANEL P4 AND DISCONNECT SWITCHES. FIELD VERIFY ALL EQUIPMENT IN PANEL HAS BEEN REMOVED. TRANSFER ANY ACTIVE CIRCUITS TO LOADING DOCK EQUIPMENT TO PANEL PP2A. REMOVE PANEL, DISCONNECT AND WIRING BACK TO SOURCE (MAIN ELECTRICAL ROOM).
- ④ LOCATION OF EXISTING PANEL P5A (LOADING DOCK PANEL) WHICH IS CURRENTLY FED FROM PANEL P5. PANEL TO REMAIN IN PLACE, REDESIGNATE PANEL PP2A.
- ⑤ EXISTING TRANSFORMER (TO REMAIN)
- ⑥ EXISTING PANELS (TO REMAIN) SEE ONE LINE KEY NOTES FOR TENANT #2
- ⑦ TENANT #3 PANELS LOCATION. SEE ONE LINE KEY NOTES FOR TENANT #3.
- ⑧ NEW TENANT #4 PANELS LOCATION. SEE ONE LINE KEY NOTES FOR TENANT #4.
- ⑨ REMOVE EXISTING TELEPHONE EQUIPMENT FROM THIS WALL, INSTALL PP1A AND PP1. INSTALL/STACK TRANSFORMERS T1 AND T2 ON UNISTRUT STRUCTURE.
- ⑩ 400A TENANT METERS MUST BE FURNISHED AND REMOTE MOUNTED ADJACENT TO THE METERING SWITCHBOARD.

GENERAL NOTES

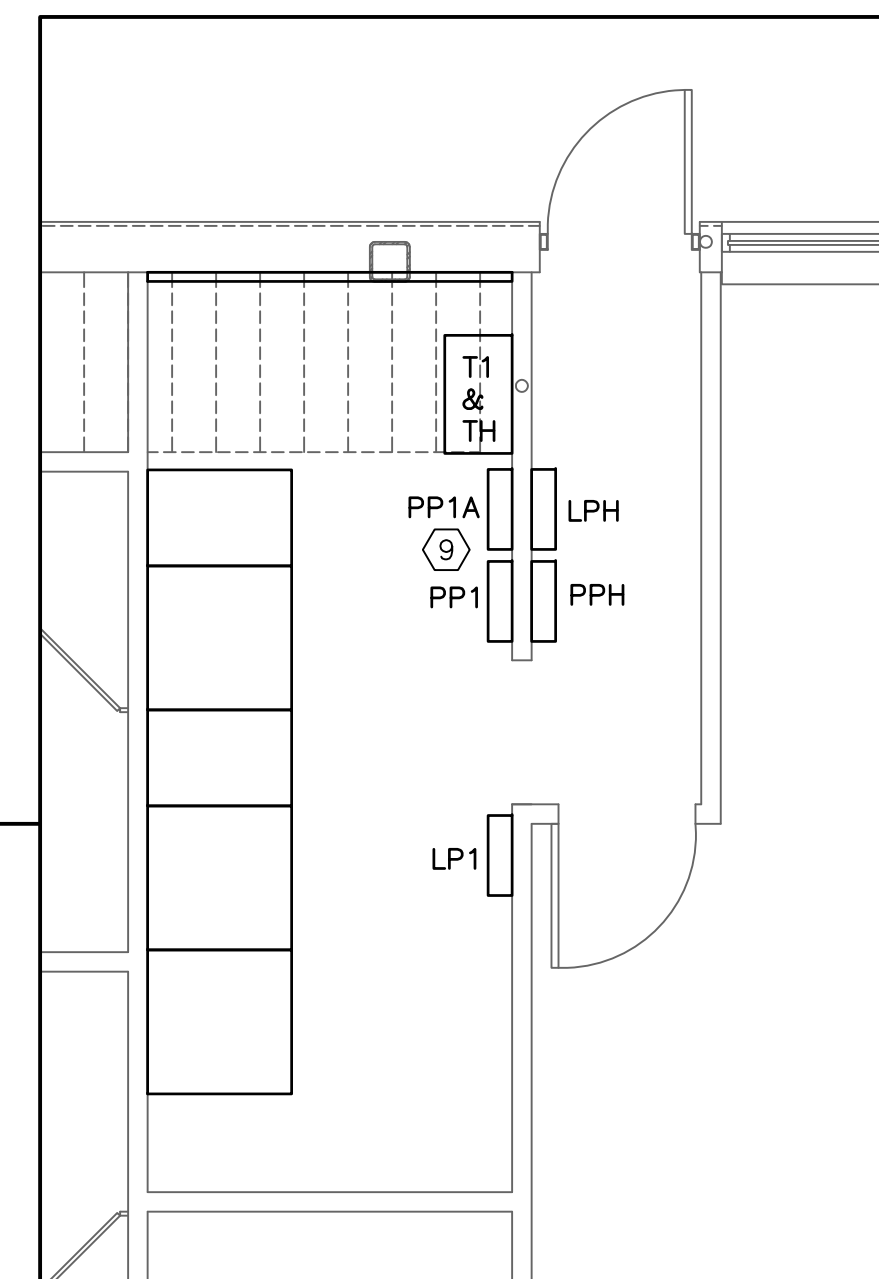
1. ALL WORK SHALL BE IN COMPLIANCE WITH NFPA-70, NATIONAL ELECTRICAL CODE.
2. THE INTENT IS TO REUSE THE EXISTING SERVICE ENTRANCE CONDUCTORS AND CONNECT TO NEW METERING SWITCHGEAR. UTILITY WILL HAVE TO REMOVE EXISTING CT METERING IN THE TRANSFORMER PAD. REMOVE ALL EXISTING METERING EQUIPMENT, CONDUITS AND WIRING. COORDINATE ALL ELECTRICAL SERVICE REQUIREMENTS WITH CENTRAL MAINE POWER COMPANY.
3. IN ELECTRICAL ROOM REMOVE EXISTING 1000A PANEL. RELOCATE ALL EQUIPMENT AS REQUIRED TO INSTALL NEW METERING SWITCHGEAR. INTENT IS TO RECONNECT EXISTING PANELS IN THIS SPACE TO NEW 400A SERVICE TO TENANT A.
4. FURNISH NEW CIRCUIT FEEDERS AND CONDUITS TO LOCATIONS SHOWN ON PLANS FOR NEW TENANT PANELS AND TRANSFORMERS.
5. EXISTING LIGHTING WIRING SHALL BE ROUTED BACK TO NEW 277/480V (LP) PANEL IN THAT TENANT SPACE. INSTALL NEW LIGHTING SWITCHES AT DOOR TO SPACE. FURNISH ADDITIONAL CONDUIT AND WIRING AS REQUIRED.
6. CONNECT CONVENIENCE RECEPTACLES BACK TO 208/120V (PP) PANEL IN THAT TENANT SPACE. PROVIDE ADDITIONAL CONDUIT AND WIRING AS REQUIRED.



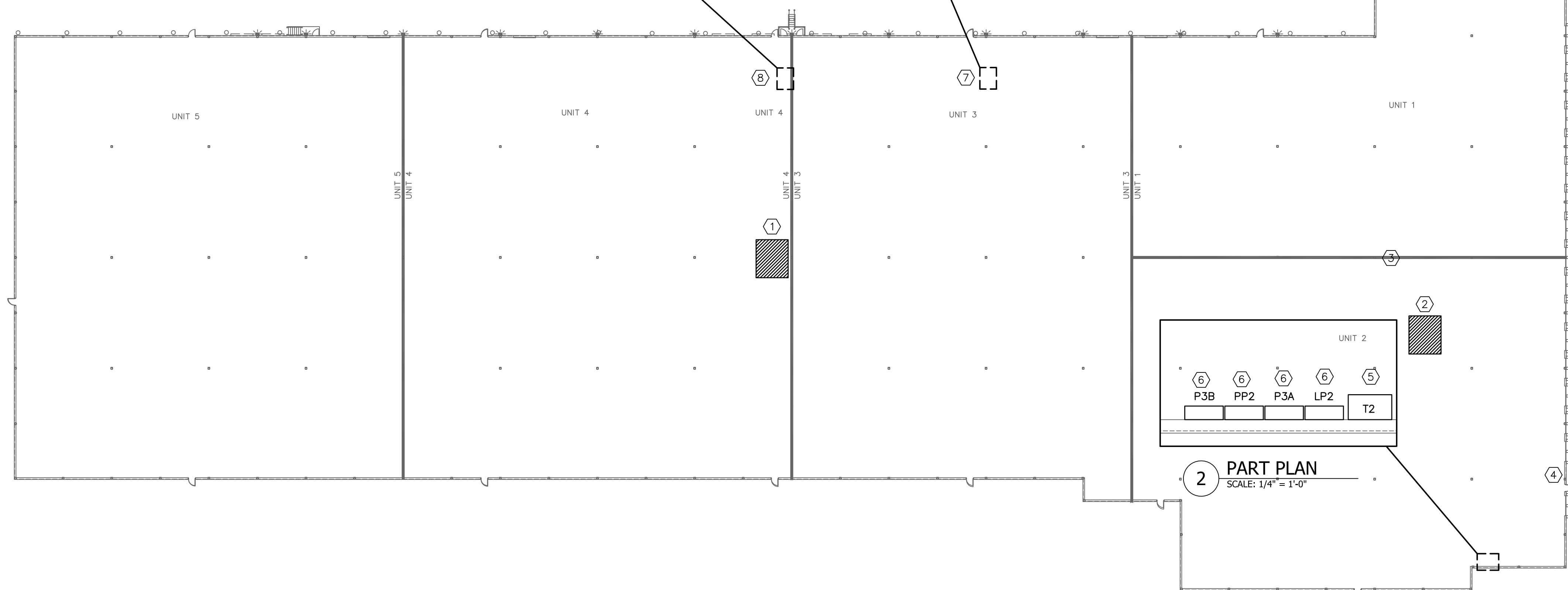
3 PART PLAN
SCALE: 1/4" = 1'-0"



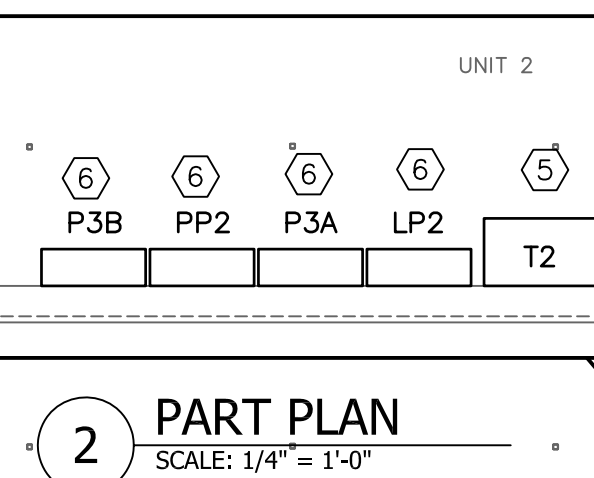
4 PART PLAN
SCALE: 1/4" = 1'-0"



6 ELECTRICAL ROOM PART PLAN
SCALE: 1/4" = 1'-0"



1 ELECTRICAL POWER PLAN
SCALE: 1/32" = 1'-0"



2 PART PLAN
SCALE: 1/4" = 1'-0"

| | | | |
|-----------------------------------|---|---------|------------------------------------|
| | | | |
| A | TDM | 12/7/12 | REVISED AS PER EXISTING CONDITIONS |
| REV | BY | DATE | STATUS |
| 765 WARREN AVE PORTLAND, MAINE | | | |
| ELECTRICAL PLAN | | | |
| | SWIFTCURRENT | | DESIGN BY: TDM |
| | Engineering Services | | DRAWN BY: KLM |
| | 10 Forest Falls Dr. Unit 8b Yarmouth, ME 04096 Tel: (207) 847-9280 | | DATE: 11-30-2012 |
| | 12/03/2012 | | JOB: SCALE: AS NOTED |
| | | | E101 |