

# PROPERTY SITE IMPROVEMENTS

165 WARREN AVENUE  
PORTLAND, MAINE

**APPLICANT:**  
WARREN DEVELOPMENT II, LLC  
& CHUNKY MONKEY, LLC  
C/O BOULOS PROPERTY  
MANAGEMENT  
ONE CANAL PLAZA  
PORTLAND, MAINE 04101

**ENGINEER/SURVEYOR/  
LANDSCAPE ARCHITECT**

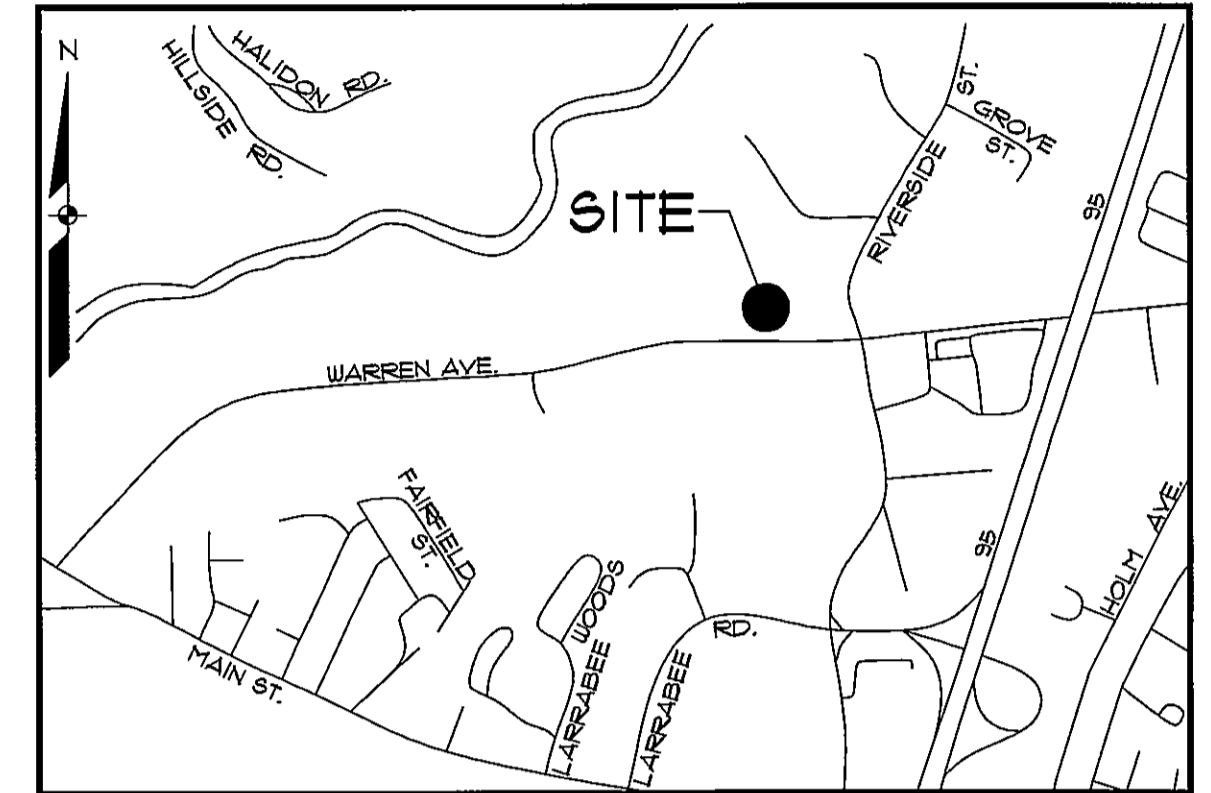
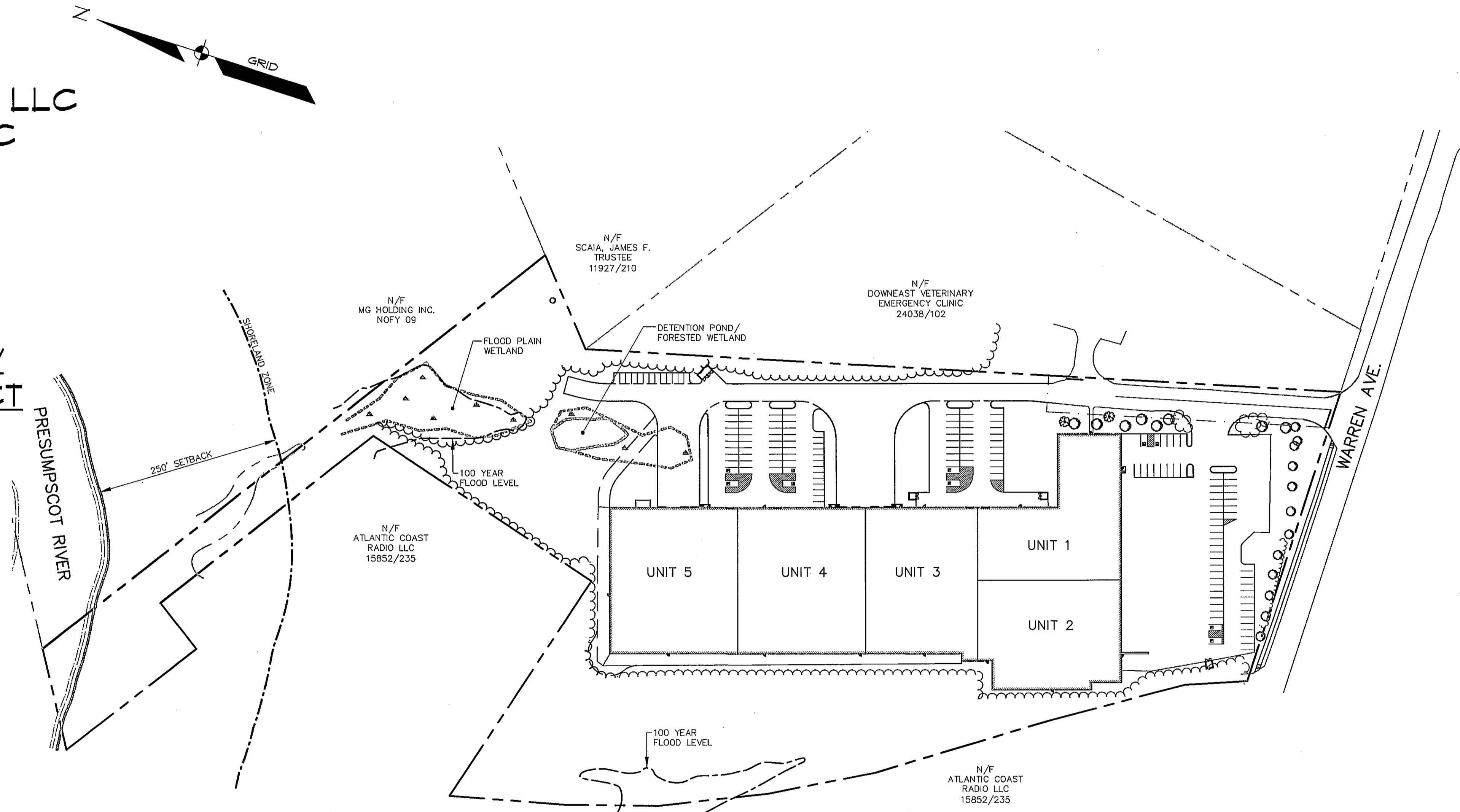
**SEBAGO**  
TECHNICS

CIVIL ENGINEERING • SURVEYING • LANDSCAPE ARCHITECTURE

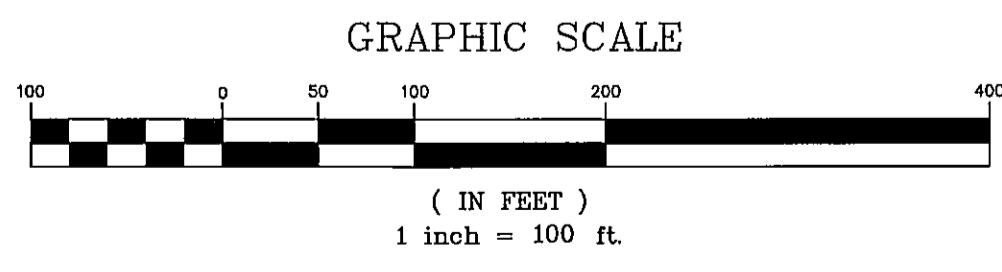
WWW.SEBAGOTECHNICS.COM

75 John Roberts Rd. - Suite 1A  
South Portland, ME 04106  
Tel. 207-200-2100

250 Goddard Rd. - Suite B  
Lewiston, ME 04240  
Tel. 207-783-5656



LOCATION MAP N.T.S.



**SHEET INDEX:**

SHEET	DESCRIPTION
1	COVER SHEET
2	STANDARD BOUNDARY SURVEY
3	EXISTING CONDITIONS/ DEMOLITION PLAN
4	SITE DEMOLITION PLAN
5	OVERALL SITE PLAN
6	SITE PLAN
7	SITE PLAN
8	GRADING AND UTILITY PLAN
9	GRADING AND UTILITY PLAN
10	WARREN AVENUE SIDEWALK PLAN
11	LANDSCAPE PRESERVATION PLAN
12	LANDSCAPE AND LIGHTING PLAN
13	LANDSCAPE AND LIGHTING PLAN
14	DETAILS
15	DETAILS
16	DETAILS
17	PRE-DEVELOPMENT STORMWATER PLAN
18	POST-DEVELOPMENT STORMWATER PLAN

