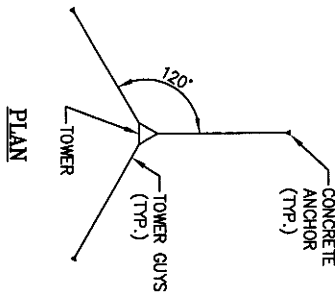




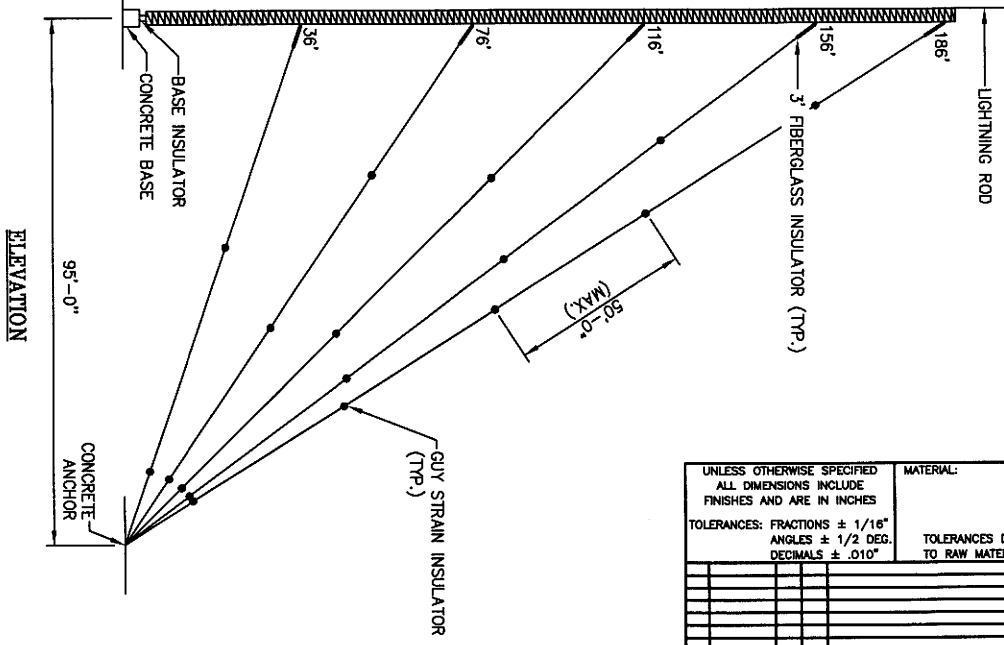
SPLICE BOLTS	
ELEVATION	BOLT SIZE
0' TO 188'	1/2" X 2"

GUY STRAND	
ELEVATION	STRAND SIZE
36'	1/4" EHS
76'	1/4" EHS
116'	1/4" EHS
156'	5/16" EHS
188'	5/16" EHS



- NOTES:**
1. THE PART NUMBER OF THE TOWER SECTION IS LOCATED AT THE TOP OF EACH SECTION.
 2. IT IS IMPORTANT TO ALIGN THESE PART NUMBERS ON THE SAME LEG FOR THE ENTIRE HEIGHT OF THE TOWER.
 3. NO MORE THAN 50' OF TOWER SHALL BE ASSEMBLED AND LIFTED AT ONE TIME.

188'	1.660	1/2	T1800023	66
184'	1.660	1/2	T1800023	66
180'	1.660	1/2	T1800001	136
170'	1.660	1/2	T1800001	136
160'	1.660	1/2	T1800001	136
150'	1.660	1/2	T1800001	136
140'	1.660	1/2	T1800001	136
130'	1.660	1/2	T1800001	136
120'	1.660	1/2	T1800001	136
110'	1.660	1/2	T1800001	136
100'	1.660	1/2	T1800001	136
90'	1.660	1/2	T1800001	136
80'	1.660	1/2	T1800001	136
70'	1.660	1/2	T1800001	136
60'	1.660	1/2	T1800001	136
50'	1.660	1/2	T1800001	136
40'	1.660	1/2	T1800001	136
30'	1.660	1/2	T1800001	136
20'	1.660	1/2	T1800001	136
10'	1.660	1/2	T1800001	136
0'	1.660	1/2	T1800001	136



UNLESS OTHERWISE SPECIFIED ALL DIMENSIONS INCLUDE FINISHES AND ARE IN INCHES		MATERIAL:	
TOLERANCES: FRACTIONS ± 1/16"		TOLERANCES DO NOT APPLY TO RAW MATERIAL	
ANGLES ± 1/2 DEG.			
DECIMALS ± .010"			
REV	DATE	DRW/CHK	DESCRIPTION



CONFIDENTIAL
 This document and the information contained herein is the confidential trade secret property of Sabre Communications Corporation ("Sabre") and must not be reproduced, copied or used, in whole or in part, for any purpose without the prior written consent of Sabre.
 © 2013 Sabre Communications Corporation. All rights reserved.

MASTER: 188', 1800 TLWD GUYED TOWER			
SITE: PORTLAND, ME			
CUSTOMER: NORTHERN PRIDE COMMUNICATIONS, INC.			
JOB NO. 90417	SIZE B	DRAWING NO. 90417-MG	REV 0
DATE 10/14/13	DRAWN BY DRL	SCALE None	PAGE 1 OF 2
CHECKED BY KTW			



TOWER DESIGN INFORMATION

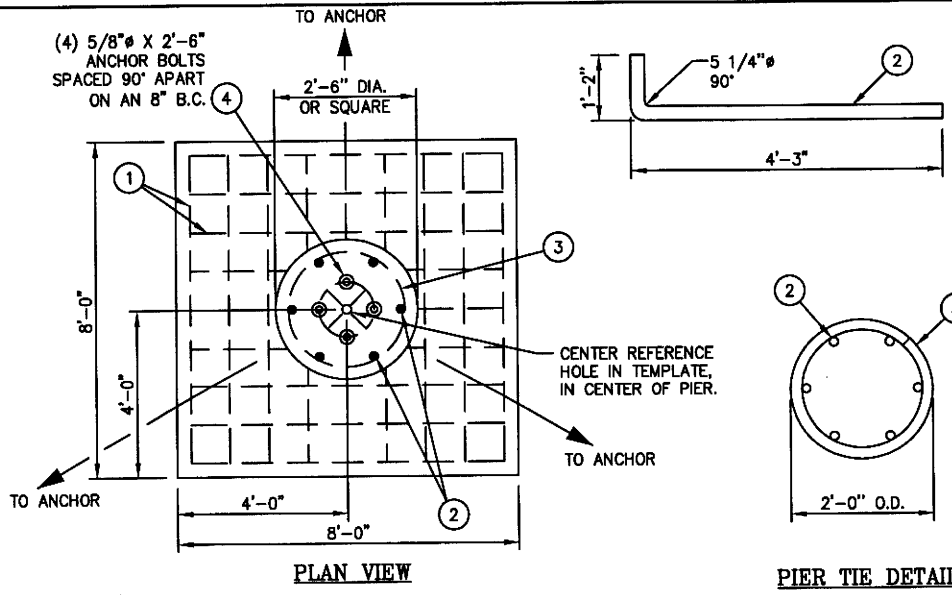
TOWER DESIGNED AT 100 MPH WIND + 0" ICE & 40 MPH WIND + 1" ICE IN ACCORDANCE WITH ANSI-TIA-222-G, STRUCTURE CLASS II, EXPOSURE CATEGORY C, TOPOGRAPHIC CATEGORY 1.

THIS ERECTION DRAWING PACKAGE IS BASED ON THE STRUCTURAL ANALYSIS NO. 90417. (REV. B)

DRAWING LIST

- 90417-F1 (REV. 2) . . CONCRETE FOUNDATION
- 90417-A1 CONCRETE ANCHORS
- 90417-PL (REV. 2) . . TOWER LAYOUT
- 90417-BI BASE INSTALLATION WITH INSULATOR
- C30904026 10 FT. GENERAL SECTION INFORMATION
- C30904029 4 FT. GENERAL SECTION INFORMATION
- C30904189 GUY BRACKET ASSEMBLY
- C30904138 LEG CAP ASSEMBLY
- 90417-GT GUY TEMPERATURE CHART
- 90417-GA GUY ASSEMBLY WITH INSULATORS
- C301521 TOWER GROUNDING (STD. T.I.A.)
- C30904103 LIGHTNING ROD MOUNT
- 9025689 LIGHTNING ROD
- 902816 TEMPORARY TOWER LIGHTING
- (SEE MANUAL) CABLE SAFETY CLIMB DEVICE WITHOUT HARNESS
- 9014671 BOLT DETAILS
- 907901 INVENTORY REQUIREMENT SHEET
- BOM-1 (REV. 1) BILL OF MATERIAL

UNLESS OTHERWISE SPECIFIED ALL DIMENSIONS INCLUDE FINISHES AND ARE IN INCHES		MATERIAL:		MASTER: 188', 1800 TLWD GUYED TOWER	
TOLERANCES: FRACTIONS ± 1/16" ANGLES ± 1/2 DEG. DECIMALS ± .010"		TOLERANCES DO NOT APPLY TO RAW MATERIAL		SITE: PORTLAND, ME	
			CONFIDENTIAL This document and the information contained herein is the confidential trade secret property of Sabre Communications Corporation ("Sabre") and must not be reproduced, copied or used, in whole or in part, for any purpose without the prior written consent of Sabre. © 2013 Sabre Communications Corporation. All rights reserved.	CUSTOMER: NORTHERN PRIDE COMMUNICATIONS, INC.	
				JOB NO. 90417	SIZE B
			DATE 10/14/13		REV 0
			DRAWN BY DRL	SCALE None	PAGE 2 OF 2
			CHECKED BY KTW		
REV	DATE	DRW/CHK	DESCRIPTION		

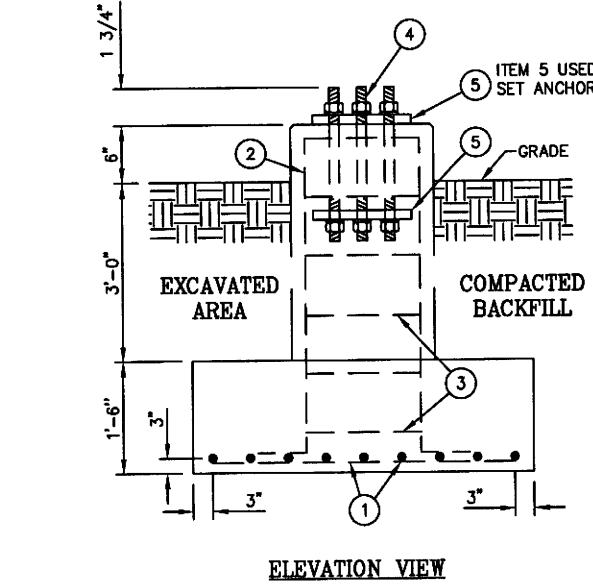


REINFORCING STEEL SCHEDULE							
ITEM	LOCATION	NO. REQ'D.	BAR SPC'G.	SIZE	CUT LENGTH	TOTAL LENGTH	TOTAL WT.
1.	PAD BOTTOM REINFORCING	18	EQUALLY SPACED AS SHOWN	#7	7'-6"	135'-0"	276 LBS.
2.	PIER VERTICAL REINFORCING	6	60" APART	#7	5'-5"	32'-6"	66 LBS.
3.	PIER TIES	5	12" C-C	#3	7'-6"	37'-6"	14 LBS.
TOTAL REBAR WT.							356 LBS.

CONCRETE REQUIRED		
LOCATION	W/ROUND PIERS	W/SQUARE PIERS
PAD	3.6 CU. YDS.	3.6 CU. YDS.
PIER	0.6 CU. YDS.	0.8 CU. YDS.
TOTAL CONCRETE	4.2 CU. YDS.	4.4 CU. YDS.

ANCHOR BOLT SCHEDULE				
ITEM	PART NO.	NO. REQ'D.	ANCHOR BOLT SIZE	SPACING
4.	C40094012	4	5/8" x 2'-9"	EQUALLY SPACED

TEMPLATE SCHEDULE			
ITEM	PART NO.	NO. REQ'D.	BOLT CIRCLE
5.	C30139066	2	8"



GENERAL NOTES

1. CONCRETE SHALL HAVE A MINIMUM 28 DAY COMPRESSIVE STRENGTH OF 4000 PSI, IN ACCORDANCE WITH ACI 318-05.
2. REBAR TO CONFORM TO ASTM SPECIFICATION A615 GRADE 60.
3. ALL REBAR TO HAVE A MINIMUM OF 3" CONCRETE COVER.
4. ALL EXPOSED CONCRETE CORNERS TO BE CHAMFERED 3/4".
5. THE FOUNDATION DESIGN IS BASED ON THE GEOTECHNICAL REPORT BY S.W. COLE ENGINEERING, PROJECT NO. 13-0993 S, DATED: SEPTEMBER 24, 2013.
6. THE FOUNDATION DESIGN IS BASED ON THE FOLLOWING FACTORED REACTIONS:
FACTORED AXIAL LOAD = 55.18
FACTORED SHEAR = 0.14
7. SEE THE GEOTECHNICAL REPORT FOR COMPACTION REQUIREMENTS, IF SPECIFIED.

UNLESS OTHERWISE SPECIFIED ALL DIMENSIONS INCLUDE FINISHES AND ARE IN INCHES	MATERIAL:		
TOLERANCES: FRACTIONS ± 1/16" ANGLES ± 1/2 DEG. DECIMALS ± .010"	TOLERANCES DO NOT APPLY TO RAW MATERIAL.		
REV	DATE	DRW/CHK	DESCRIPTION
2	10/27/13	DLK	REVISED FOUNDATION DESIGN PER STRUCTURAL ANALYSIS PERFORMED BY
1	10/24/13	DLK	REVISED ITEM NUMBER 4.

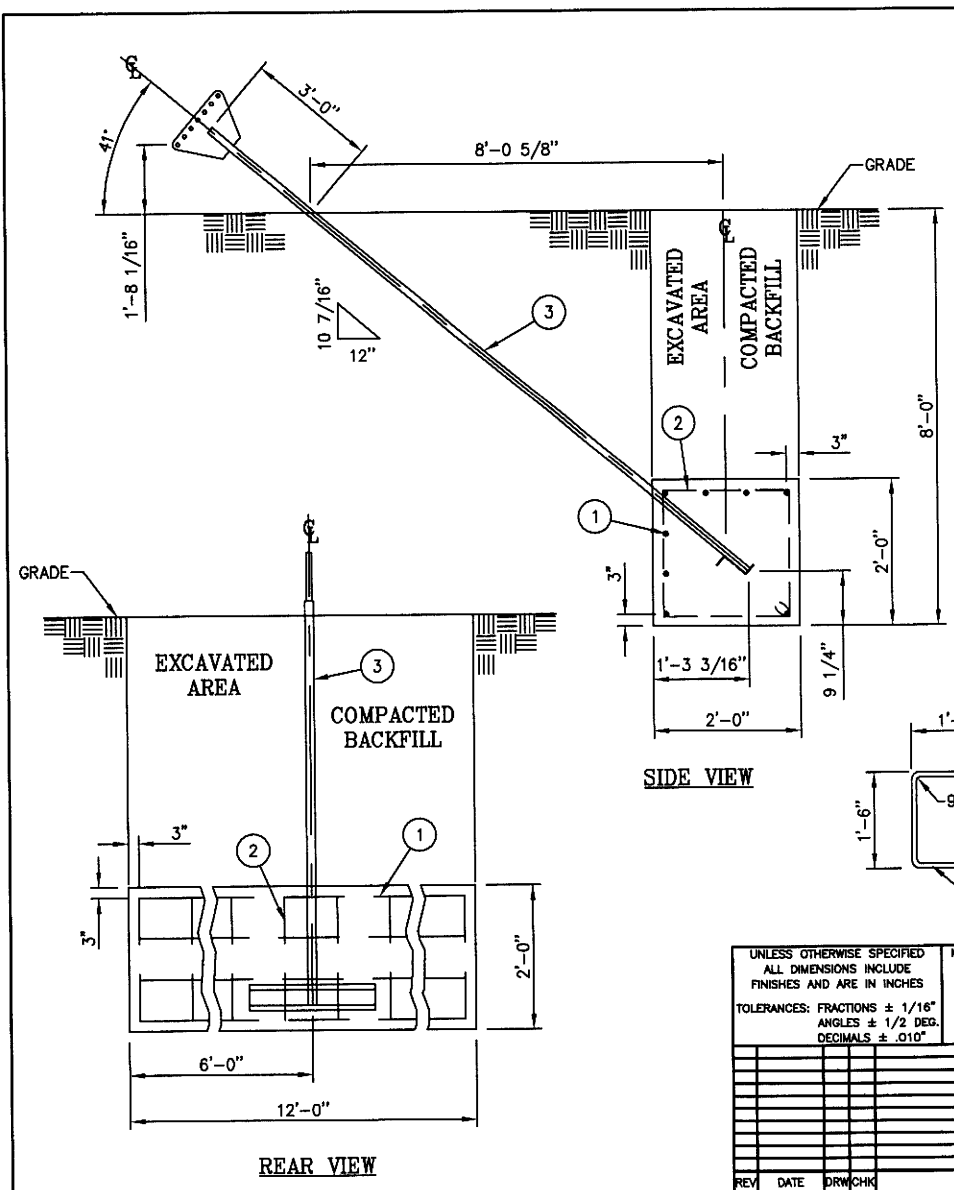
Sabre Industries
Towers and Poles

CONFIDENTIAL

This document and the information contained herein is the confidential trade secret property of Sabre Communications Corporation ("Sabre") and must not be reproduced, copied or used, in whole or in part, for any purpose without the prior written consent of Sabre.
© 2013 Sabre Communications Corporation. All rights reserved.

GUYED TOWER FOUNDATION
SITE: PORTLAND, ME
CUSTOMER: NORTHERN PRIDE COMMUNICATIONS, INC.

JOB NO. 90417	SIZE B	DRAWING NO. 90417-F1	REV 2
DATE 10/2/13	DRAWN BY DLK	CHECKED BY KTW	SCALE None
		PAGE 1 OF 1	



REINFORCING STEEL SCHEDULE PER ANCHOR							
ITEM	LOCATION	NO. REQ'D.	BAR SPACING	SIZE	CUT LENGTH	TOTAL LENGTH	TOTAL WT.
1.	HORIZONTAL REINFORCING	8	EQUALLY SPACED AS SHOWN	#5	11'-6"	92'-0"	96 LBS.
2.	BENT REINFORCING	13	EQUALLY SPACED AS SHOWN	#5	6'-6"	84'-6"	88 LBS.
TOTAL REBAR WT.							184 LBS.

CONCRETE REQUIRED PER ANCHOR	
TOTAL CONCRETE	1.8 CU. YDS.

EMBEDMENT STEEL REQUIRED PER ANCHOR				
ITEM	QTY.	PART NO.	DESCRIPTION	TOTAL WT.
3.	1	C30129033	WELDMNT, ANCHOR SHAFT, 1 1/4" DIA X 14'-2 7/8", 1/2" PL.	79 LBS.

GENERAL NOTES

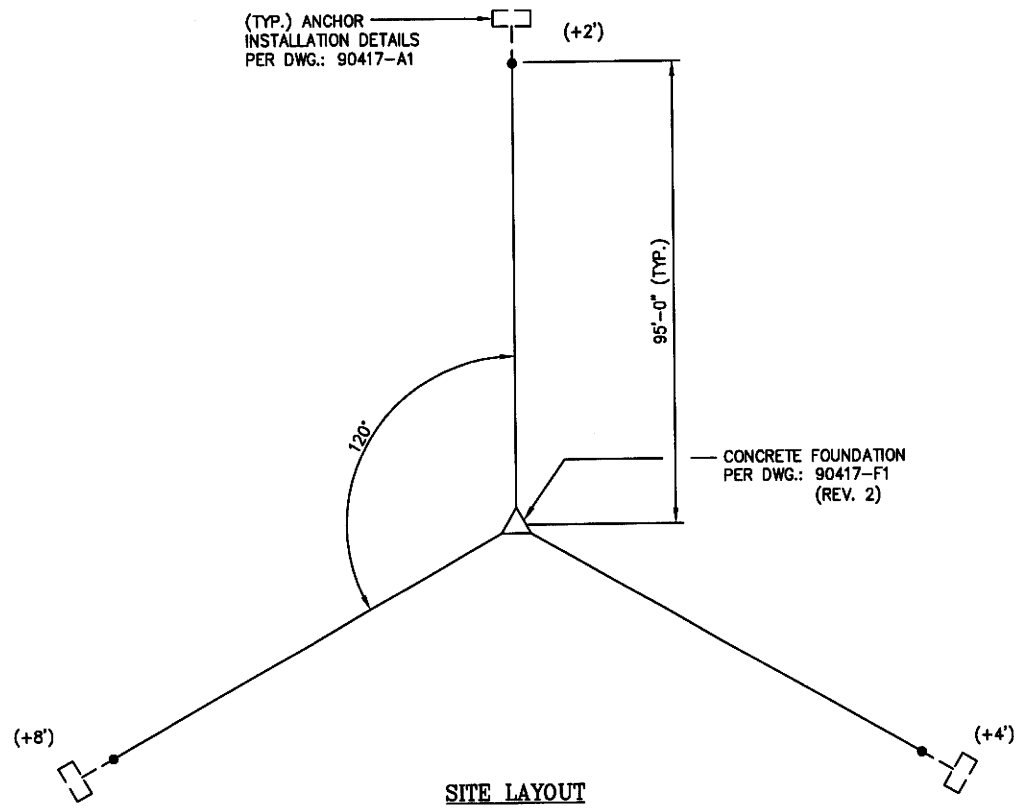
1. CONCRETE SHALL HAVE A MINIMUM 28 DAY COMPRESSIVE STRENGTH OF 4000 PSI, IN ACCORDANCE WITH ACI 318-05.
2. REBAR TO CONFORM TO ASTM SPECIFICATION A615 GRADE 60.
3. ALL REBAR TO HAVE A MINIMUM OF 3" CONCRETE COVER.
4. THE FOUNDATION DESIGN IS BASED ON THE GEOTECHNICAL REPORT BY: S.W. COLE ENGINEERING, PROJECT NO.: 13-0993 S, DATED: SEPTEMBER 24, 2013.
5. THE FOUNDATION DESIGN IS BASED ON THE FOLLOWING FACTORED REACTIONS:
 UPLIFT (KIPS) = 10.13
 HORIZONTAL FORCE (KIPS) = 11.39
6. WHEN THE SOIL ELECTRICAL RESISTIVITY IS LESS THAN 50 OHM-M AND/OR THE MEASURED SOIL pH VALUES ARE BELOW 3 OR GREATER THAN 9, ADDITIONAL CORROSION CONTROL IS REQUIRED. SEE THE GEOTECHNICAL REPORT FOR THESE PARAMETERS, IF SPECIFIED.
7. SEE THE GEOTECHNICAL REPORT FOR COMPACTION REQUIREMENTS, IF SPECIFIED.

UNLESS OTHERWISE SPECIFIED ALL DIMENSIONS INCLUDE FINISHES AND ARE IN INCHES	MATERIAL:
TOLERANCES: FRACTIONS ± 1/16" ANGLES ± 1/2 DEG. DECIMALS ± .010"	TOLERANCES DO NOT APPLY TO RAW MATERIAL
REV	DATE
DRW	CHK
DESCRIPTION	

Sabre Industries
Towers and Poles

CONFIDENTIAL
This document and the information contained herein is the confidential trade secret property of Sabre Communications Corporation ("Sabre") and must not be reproduced, copied or used, in whole or in part, for any purpose without the prior written consent of Sabre.
© 2013 Sabre Communications Corporation. All rights reserved.

CONCRETE ANCHOR			
SITE: PORTLAND, ME			
CUSTOMER: NORTHERN PRIDE COMMUNICATIONS, INC.			
JOB NO. 90417	SIZE B	DRAWING NO. 90417-A1	REV 0
DATE 10/2/13	DRAWN BY DLK	CHECKED BY KTW	SCALE None
		SCALE None	PAGE 1 OF 1



NOTES:

1. THE TOWER CENTER AND ANCHORS ARE TO BE LOCATED AND STAKED BY THE TOWER OWNER. (CONCRETE INSTALLER TO VERIFY).
2. THE ANCHOR DISTANCE SHOWN IS HORIZONTAL FROM THE TOWER BASE WITH A MAXIMUM GRADE DEVIATION, (SHOWN IN ()), OF PLUS 8 FT. OR MINUS 0 FT. FROM TOWER BASE TO ANCHOR POINT OF DAYLIGHT. CONTACT SABRE ENGINEERS IF ACTUAL GRADE EXCEEDS THE PLUS OR MINUS DESIGN.

UNLESS OTHERWISE SPECIFIED ALL DIMENSIONS INCLUDE FINISHES AND ARE IN INCHES		MATERIAL:
TOLERANCES: FRACTIONS ± 1/16" ANGLES ± 1/2 DEG. DECIMALS ± .010"		TOLERANCES DO NOT APPLY TO RAW MATERIAL.
REV	DATE	DESCRIPTION
2	10/29/13	DLK KTW CHANGED CONCRETE FOUNDATION REV. NOTE PER NEW FOUNDATION DESIGN.
1	10/04/13	DLK KTW ADDED REV. NOTE TO CONCRETE FOUNDATION.

Sabre Industries[™]
Towers and Poles

CONFIDENTIAL
This document and the information contained herein is the confidential trade secret property of Sabre Communications Corporation ("Sabre") and must not be reproduced, copied or used, in whole or in part, for any purpose without the prior written consent of Sabre.
© 2013 Sabre Communications Corporation. All rights reserved.

LAYOUT: 188', 1800 TLWD GUYED TOWER			
SITE: PORTLAND, ME			
CUSTOMER: NORTHERN PRIDE COMMUNICATIONS, INC.			
JOB NO. 90417	SIZE	DRAWING NO.	REV
DATE 10/2/13	B	90417-PL	2
DRAWN BY DLK		SCALE	PAGE
CHECKED BY KTW		None	1 OF 1

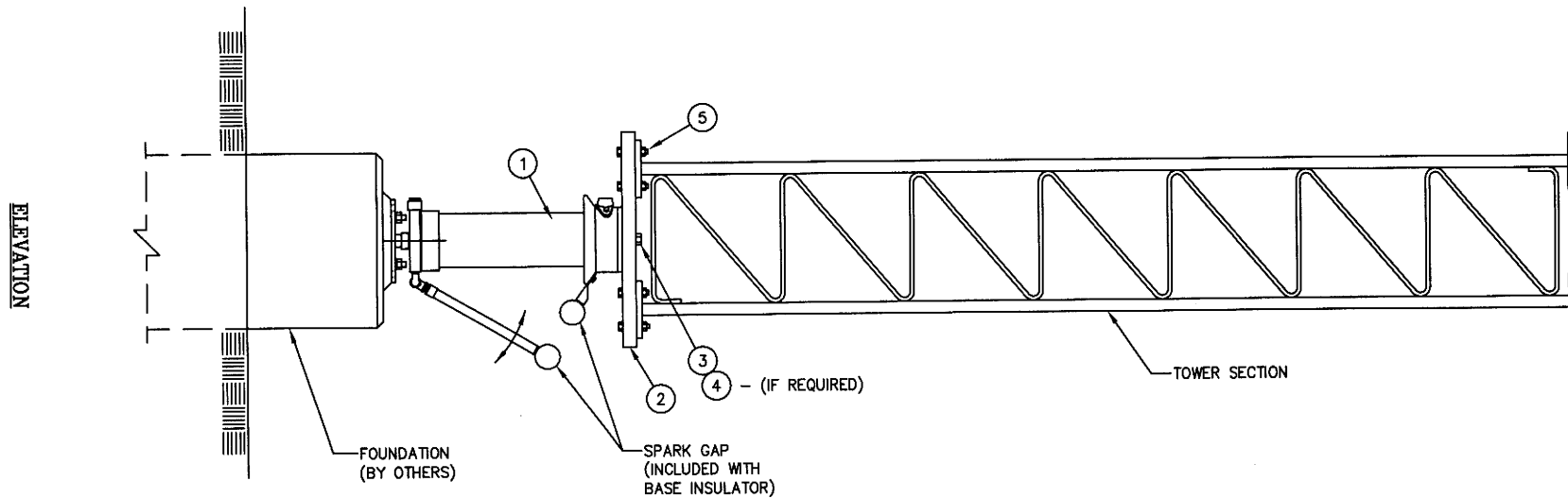


LIST OF MATERIAL

ITEM	QTY.	PART NO.	DESCRIPTION	WEIGHT
1.	1	C40085002	TOWER BASE INSULATOR (#A-4722-B) W/SPARK GAP	110#
2.	1	CS00803	TRANSITION PLATE	183#
3.	3	C40026025	BOLT ASSEMBLY, 5/8" X 2 1/2" A325	2#
4.	6	C40031003	FLATWASHER, 5/8" H.D.G.	1#
5.	9	C40026010	BOLT ASSEMBLY, 1/2" X 3 1/4" A325	4#
TOTAL WEIGHT				300#

NOTE:

SEE THE INSTALLATION INSTRUCTIONS INCLUDED WITH THE INSULATOR, FOR ASSEMBLY.



UNLESS OTHERWISE SPECIFIED ALL DIMENSIONS INCLUDE FINISHES AND ARE IN INCHES		MATERIAL:	
TOLERANCES: FRACTIONS ± 1/16" ANGLES ± 1/2 DEG. DECIMALS ± .010"		TOLERANCES DO NOT APPLY TO RAW MATERIAL	
REV	DATE	DRW/CHK	DESCRIPTION



CONFIDENTIAL
This document and the information contained herein is the confidential trade secret property of Sabre Communications Corporation ("Sabre") and must not be reproduced, copied or used, in whole or in part, for any purpose without the prior written consent of Sabre.
© 2013 Sabre Communications Corporation. All rights reserved.

BASE INSTALLATION WITH INSULATOR			
SITE: PORTLAND, ME			
CUSTOMER: NORTHERN PRIDE COMMUNICATIONS, INC.			
JOB NO. 90417	SIZE	DRAWING NO.	REV
DATE 10/14/13	B	90417-BI	0
DRAWN BY DRL	CHECKED BY KTW	SCALE None	PAGE 1 OF 1

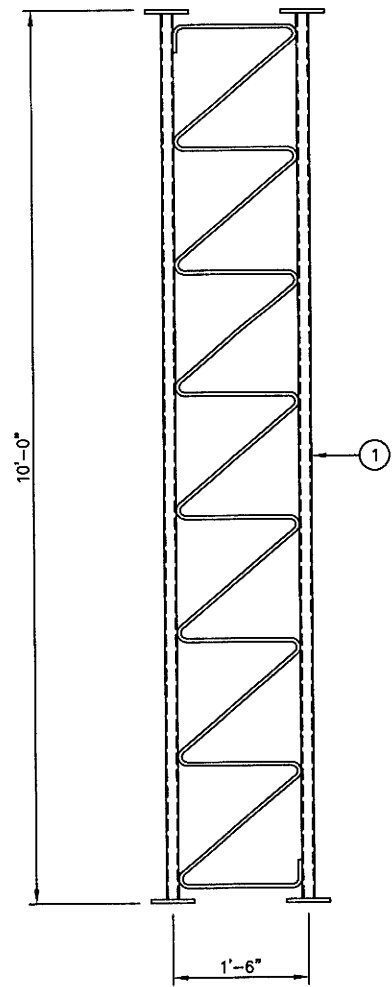


C30904026 10 FT. TOWER SECTION (MODEL 1800 TLWD)

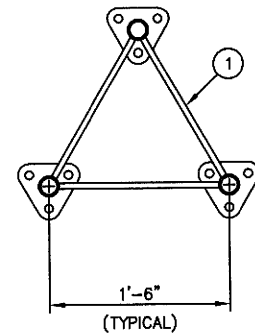
ITEM	QTY.	PART NO.	DESCRIPTION	WEIGHT
1.	1	T1800001	10 FT. TOWER SECTION (MODEL 1800 TLWD)	135.7#
2.	9	C40026005	BOLT ASSEMBLY, 1/2 X 2 A325	2.2#
TOTAL WEIGHT				137.9#

NOTES:

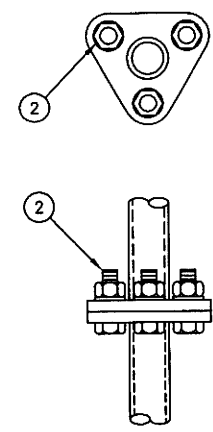
1. THE PART NUMBER OF THE TOWER SECTION IS LOCATED AT THE TOP OF EACH SECTION.
2. IT IS IMPORTANT TO ALIGN THESE PART NUMBERS ON THE SAME LEG FOR THE ENTIRE HEIGHT OF THE TOWER.



ELEVATION VIEW



PLAN VIEW



SPLICE DETAIL

UNLESS OTHERWISE SPECIFIED ALL DIMENSIONS INCLUDE FINISHES AND ARE IN INCHES		MATERIAL:	
TOLERANCES: FRACTIONS ± 1/16" ANGLES ± 1/2 DEG. DECIMALS ± .010"		TOLERANCES DO NOT APPLY TO RAW MATERIAL	
REV	DATE	DRW/CHK	DESCRIPTION
1	03/30/07	PSB/ESP	ADDED NOTES.

Sabre Industries
Towers and Poles

CONFIDENTIAL

This document and the information contained herein is the confidential trade secret property of Sabre Communications Corporation ("Sabre") and must not be reproduced, copied or used, in whole or in part, for any purpose without the prior written consent of Sabre.
© 2006 Sabre Communications Corporation. All rights reserved.

10 FT. TOWER SECTION (1.660" O.D. LEG - 1/2"Ø BRACING) MODEL 1800 TLWD			
DATE	11/6/03	SIZE	B
DRAWN BY	KLE	DRAWING NO.	C30904026
CHECKED BY	DLW	SCALE	None
		REV	1
		PAGE	1 OF 1

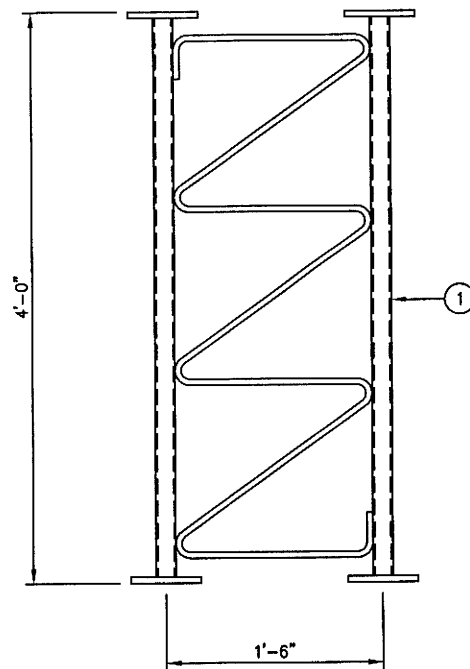


C30904029 4 FT. TOWER SECTION (MODEL 1800 TLWD)

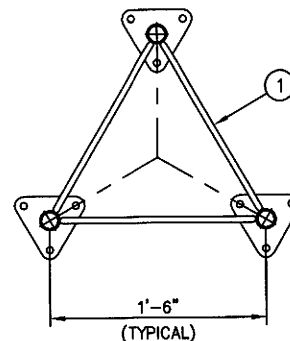
ITEM	QTY.	PART NO.	DESCRIPTION	WEIGHT
1.	1	T1800023	4 FT. TOWER SECTION (MODEL 1800 TLWD)	65.8#
2.	9	C40026005	BOLT ASSEMBLY, 1/2 X 2 A325	2.2#
TOTAL WEIGHT				68.0#

NOTES:

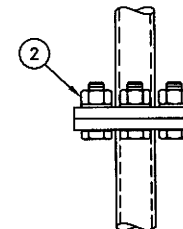
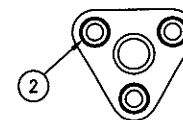
1. THE PART NUMBER OF THE TOWER SECTION IS LOCATED AT THE TOP OF EACH SECTION.
2. IT IS IMPORTANT TO ALIGN THESE PART NUMBERS ON THE SAME LEG FOR THE ENTIRE HEIGHT OF THE TOWER.



ELEVATION VIEW



PLAN VIEW



SPLICE DETAIL

UNLESS OTHERWISE SPECIFIED ALL DIMENSIONS INCLUDE FINISHES AND ARE IN INCHES		MATERIAL:
TOLERANCES: FRACTIONS ± 1/16" ANGLES ± 1/2 DEG. DECIMALS ± .010"		TOLERANCES DO NOT APPLY TO RAW MATERIAL
REV	DATE	DESCRIPTION
1	05/30/07	ISSUED AND NOTES

Sabre Industries™
Towers and Poles

CONFIDENTIAL
This document and the information contained herein is the confidential trade secret property of Sabre Communications Corporation ("Sabre") and must not be reproduced, copied or used, in whole or in part, for any purposes without the prior written consent of Sabre.
© 2006 Sabre Communications Corporation. All rights reserved.

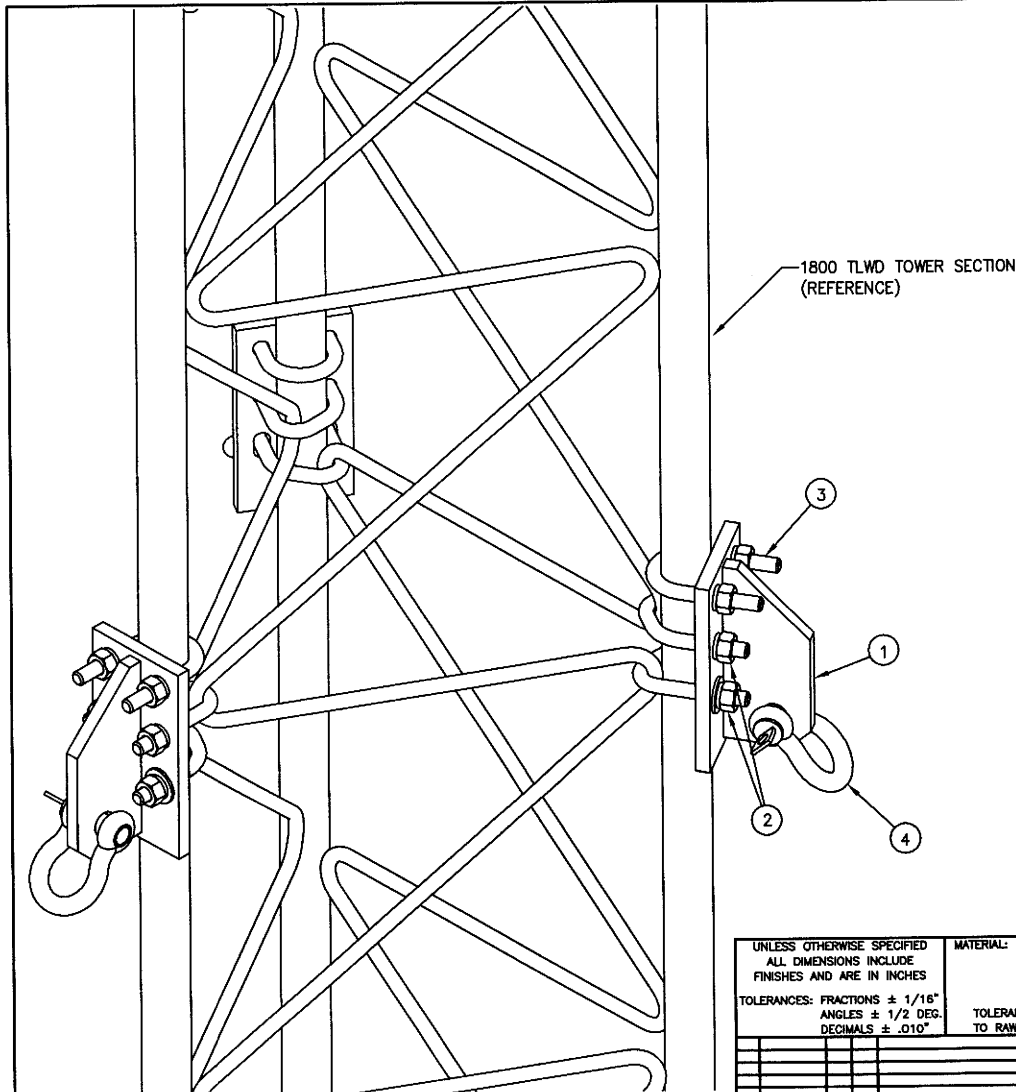
4 FT. TOWER SECTION
(1.660" O.D. LEG - 1/2"φ BRACING)
MODEL 1800 TLWD

DATE	08/03/04	SIZE	B	DRAWING NO.	C30904029	REV	1
DRAWN BY	WRF	CHECKED BY	DLW	SCALE	None	PAGE	1 OF 1



C30904189 GUY BRACKET ASSEMBLY FOR 1800 TLWD

ITEM	QTY.	PART NO.	DESCRIPTION	WEIGHT
1.	3	CW00160	GUY BRACKET	20.1#
2.	6	C40038998	BENT BOLT ASSEMBLY, 1/2 X 2 5/16" C/C	4.2#
3.	3	C40034012	U-BOLT ASSEMBLY, 1/2 X 2 5/16" C/C	2.3#
4.	3	C40053004	SHACKLE SCREW PIN, 5/8" H.D.G.	4.3#
TOTAL WEIGHT				30.9#



ISOMETRIC VIEW

UNLESS OTHERWISE SPECIFIED
ALL DIMENSIONS INCLUDE
FINISHES AND ARE IN INCHES

TOLERANCES: FRACTIONS ± 1/16"
ANGLES ± 1/2 DEG.
DECIMALS ± .010"

MATERIAL:
TOLERANCES DO NOT APPLY
TO RAW MATERIAL



**GUY BRACKET ASSEMBLY
FOR MODEL 1800 TLWD
(1.660" DIA. LEGS)**

REV	DATE	DRW/CHK	DESCRIPTION

CONFIDENTIAL
This document and the information
contained herein is the confidential trade
secret property of Sabre Communications
Corporation ("Sabre") and must not be
reproduced, copied or used, in whole or in
part, for any purpose without the prior
written consent of Sabre.
© 2006 Sabre Communications Corporation.
All rights reserved.

DATE		04/26/04	SIZE	B	DRAWING NO.	C30904189	REV	0
DRAWN BY		WRF	SCALE		None		PAGE	
CHECKED BY		DLW					1 OF 1	

NORTHERN PRIDE COMMUNICATIONS, INC.
188' 1800 TLWD GUYED TOWER
PORTLAND, ME
JOB NO.: 90417

GUY ELEVATION: 36 FEET
GUY RADIUS: 95 FEET
GUY SIZE: 1/4 E.H.S.
INITIAL TENSION: 665 LBS.

TEMPERATURE

deg.	lbs
-10	1002
0	953
10	905
20	857
30	809
40	761
50	713
60	665
70	617
80	569
90	521
100	473
110	425

INITIAL TENSION @ 60 degrees

GUY ELEVATION: 76 FEET
GUY RADIUS: 95 FEET
GUY SIZE: 1/4 E.H.S.
INITIAL TENSION: 665 LBS.

TEMPERATURE

deg.	lbs
-10	900
0	866
10	833
20	799
30	766
40	732
50	699
60	665
70	631
80	598
90	564
100	531
110	497

INITIAL TENSION @ 60 degrees

GUY ELEVATION: 116 FEET
GUY RADIUS: 95 FEET
GUY SIZE: 1/4 E.H.S.
INITIAL TENSION: 665 LBS.

TEMPERATURE

deg.	lbs
-10	820
0	797
10	775
20	753
30	731
40	709
50	687
60	665
70	643
80	621
90	599
100	577
110	555

INITIAL TENSION @ 60 degrees

GUY TEMPERATURE VARIANCE CHART

90417-GT

GUY ELEVATION: 156 FEET
GUY RADIUS: 95 FEET
GUY SIZE: 5/16 E.H.S.
INITIAL TENSION: 1120 LBS.

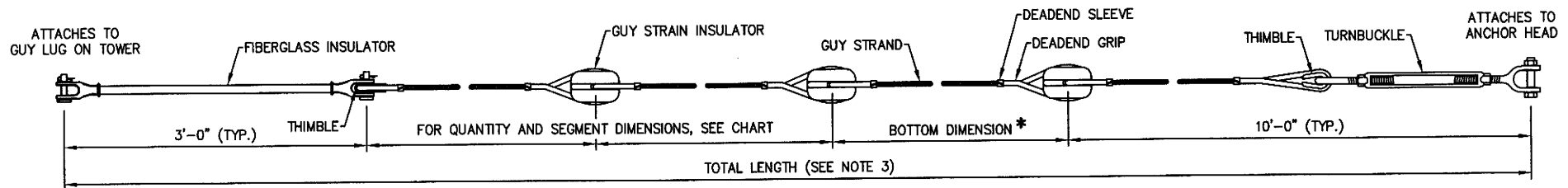
TEMPERATURE

deg.	INITIAL TENSION @ 60 degrees
-10	lbs 1282
0	1259
10	1235
20	1212
30	1189
40	1166
50	1143
60	1120
70	1097
80	1074
90	1051
100	1028
110	1005

GUY ELEVATION: 186 FEET
GUY RADIUS: 95 FEET
GUY SIZE: 5/16 E.H.S.
INITIAL TENSION: 1120 LBS.

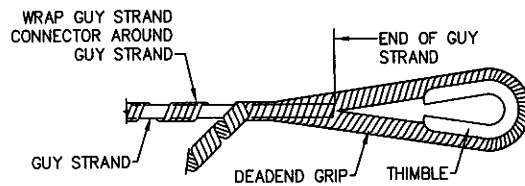
TEMPERATURE

deg.	INITIAL TENSION @ 60 degrees
-10	lbs 1244
0	1226
10	1208
20	1191
30	1173
40	1155
50	1138
60	1120
70	1102
80	1085
90	1067
100	1049
110	1032

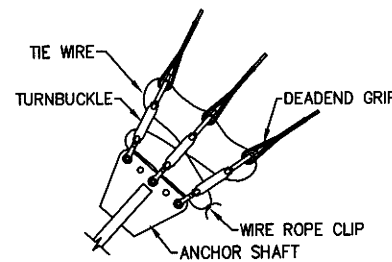


TYPICAL GUY ASSEMBLY WITH INSULATORS

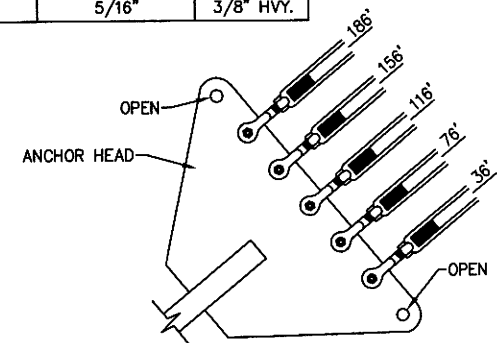
GUY STRAND AND HARDWARE REQUIRED										
ELEVATION	STRAND SIZE	TOTAL LENGTH (SEE NOTE 3)	QTY. & SEGMENT DIMENSIONS	BOTTOM DIMENSION*	FIBERGLASS INSULATOR	GUY STRAIN INSULATOR	TURNBUCKLE	DEADEND GRIP	DEADEND SLEEVE	THIMBLE
36'	1/4" EHS	107'	1 @ 50'	44'	C40080012	C40067001	1/2 X 12 J & E	1/4"	1/4"	3/8" HVY.
76'	1/4" EHS	128'	2 @ 50'	15'	C40080012	C40067001	1/2 X 12 J & E	1/4"	1/4"	3/8" HVY.
116'	1/4" EHS	158'	2 @ 50'	45'	C40080012	C40067001	1/2 X 12 J & E	1/4"	1/4"	3/8" HVY.
156'	5/16" EHS	192'	3 @ 50'	29'	C40080013	C40067003	3/4 X 12 J & E	5/16"	5/16"	3/8" HVY.
186'	5/16" EHS	220'	4 @ 50'	7'	C40080013	C40067003	3/4 X 12 J & E	5/16"	5/16"	3/8" HVY.



TYPICAL DEADEND GRIP DETAIL



TYPICAL TIRE WIRE ASSEMBLY



GUY PLACEMENT

NOTES:

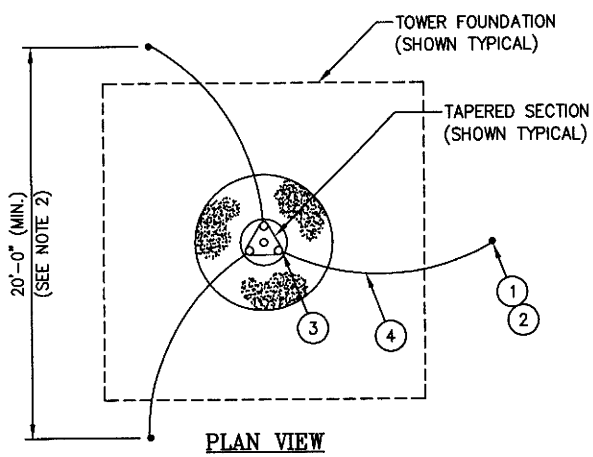
1. THE GUY STRAND AND CONNECTOR SHOWN HAVE A LEFT HAND LAY. STRAND WHICH HAS A RIGHT HAND LAY REQUIRES A CONNECTOR WITH A RIGHT HAND LAY.
2. WHEN INSTALLING DEADENDS ON THE GUY WIRES, START AT THE END OF GUY WIRE AT THE FIRST PAINTED CROSS-OVER MARK ON THE DEADEND. (MARK CLOSEST TO LOOP)
3. THE TOTAL LENGTH SHOWN INCLUDES 5% FOR SAG AND A VARIANCE FOR GRADE ELEVATION, IF REQUIRED. FOR CUTTING PURPOSES USE CUT LENGTHS SHOWN ON BILL OF MATERIAL, WHICH INCLUDES EXTRA.
- * 4. THE BOTTOM DIMENSION MAY VARY DUE TO VARIANCES IN ELEVATION FROM TOWER BASE TO ANCHOR.

UNLESS OTHERWISE SPECIFIED ALL DIMENSIONS INCLUDE FINISHES AND ARE IN INCHES		MATERIAL:	
TOLERANCES: FRACTIONS ± 1/16" ANGLES ± 1/2 DEG. DECIMALS ± .010"		TOLERANCES DO NOT APPLY TO RAW MATERIAL	
REV	DATE	DRW/CHK	DESCRIPTION

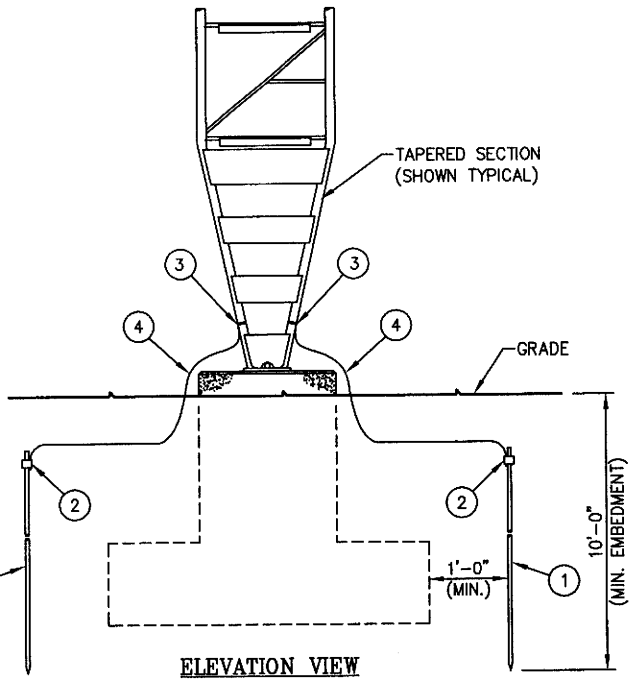
Sabre Industries[®]
Towers and Poles

CONFIDENTIAL
This document and the information contained herein is the confidential trade secret property of Sabre Communications Corporation ("Sabre") and must not be reproduced, copied or used, in whole or in part, for any purpose without the prior written consent of Sabre.
© 2013 Sabre Communications Corporation. All rights reserved.

GUY ASS'Y.: 186', 1800 TLWD GUYED TOWER			
SITE: PORTLAND, ME			
CUSTOMER: NORTHERN PRIDE COMMUNICATIONS, INC.			
JOB NO. 90417	SIZE B	DRAWING NO. 90417-GA	REV 0
DATE 10/14/13	DRAWN BY DRL	CHECKED BY KTW	SCALE None
PAGE 1 OF 1		PAGE 1 OF 1	



PLAN VIEW

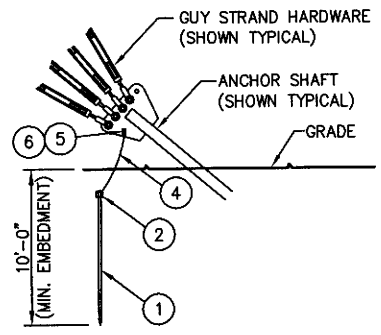


ELEVATION VIEW

TIA-222-G GROUNDING KITS FOR GUYED TOWERS									
KIT NUMBER	ANCHOR QTY.	LEG DIAMETER	ITEM #1	ITEM #2	ITEM #3	ITEM #4	ITEM #5	ITEM #6	KIT WEIGHT
			GROUND ROD 5/8 X 10'-0" GALV. STEEL	GROUND ROD CLAMP 5/8	GROUND CLAMP (AT TOWER LEG)	GROUND WIRE 2/0 STRANDED BARE COPPER	GROUND LUG (AT ANCHOR)	BOLT ASS'Y 3/8 X 2 1/4 S.S.	
C30152111	0	1 1/4"-2"	C30096006	C30097008	C30099003	C30095103	-	-	66#
C30152101	3	1 1/4"-2"	C30096006	C30097008	C30099003	C30095103	C30093003	C40012050	131#
C30152102	6	1 1/4"-2"	C30096006	C30097008	C30099003	C30095103	C30093003	C40012050	195#
C30152103	3	2 1/8"-3"	C30096006	C30097008	C30099004	C30095103	C30093003	C40012050	132#
C30152104	6	2 1/8"-3"	C30096006	C30097008	C30099004	C30095103	C30093003	C40012050	197#
C30152105	3	3 1/8"-5"	C30096006	C30097008	C30099006	C30095103	C30093003	C40012050	135#
C30152106	6	3 1/8"-5"	C30096006	C30097008	C30099006	C30095103	C30093003	C40012050	199#

NOTES:

1. TAPERED SECTION AND ANCHOR DETAILS SHOWN TYPICAL. DRAWING CAN BE USED FOR TAPERED OR STRAIGHT SECTIONS.
2. THERE SHALL BE A MINIMUM OF (3) GROUNDING ELECTRODES INSTALLED SYMMETRICALLY AROUND THE BASE OF THE STRUCTURE AT A MINIMUM 20 FT. SPACING.
3. A MINIMUM OF (1) GROUNDING ELECTRODE SHALL BE INSTALLED AND CONNECTED AT EACH ANCHOR.
4. ALL BENDS IN GROUND WIRE TO BE WELL ROUNDED CURVES FREE OF KINKS, TWISTS, ETC.



ANCHOR DETAILS

EACH GROUNDING KIT FOR (0) ANCHORS CONSISTS OF:

- (3) GROUND ROD 5/8 X 10'-0" GALV. STEEL
- (3) GROUND ROD CLAMP 5/8 (HARGER 302UGRC OR EQUAL)
- (3) GROUND CLAMP (THOMPSON OR EQUAL)
- (3) 25 FT. RUN OF 2/0 STRANDED BARE COPPER WIRE

EACH GROUNDING KIT FOR (3) ANCHORS CONSISTS OF:

- (6) GROUND ROD 5/8 X 10'-0" GALV. STEEL
- (6) GROUND ROD CLAMP 5/8 (HARGER 302UGRC OR EQUAL)
- (3) GROUND CLAMP (THOMPSON OR EQUAL)
- (6) 25 FT. RUN OF 2/0 STRANDED BARE COPPER WIRE
- (3) GROUND LUG (L250 BLACKBURN OR EQUAL)
- (3) BOLT ASSEMBLY 3/8 X 2 1/4 S.S.

EACH GROUNDING KIT FOR (6) ANCHORS CONSISTS OF:

- (9) GROUND ROD 5/8 X 10'-0" GALV. STEEL
- (9) GROUND ROD CLAMP 5/8 (HARGER 302UGRC OR EQUAL)
- (3) GROUND CLAMP (THOMPSON OR EQUAL)
- (9) 25 FT. RUN OF 2/0 STRANDED BARE COPPER WIRE
- (6) GROUND LUG (L250 BLACKBURN OR EQUAL)
- (6) BOLT ASSEMBLY 3/8 X 2 1/4 S.S.

UNLESS OTHERWISE SPECIFIED ALL DIMENSIONS INCLUDE FINISHES AND ARE IN INCHES		MATERIAL:	
TOLERANCES: FRACTIONS ± 1/16"		TOLERANCES DO NOT APPLY TO RAW MATERIAL	
ANGLES ± 1/2 DEG.			
DECIMALS ± .010"			
REV	DATE	DRW/CHK	DESCRIPTION
2	05/04/07	PSB/BSP	REVISED LEG DIMETERS IN CHART.
4	7/24/08	KLE/DLW	CHANGED ITEM 2 (WAS C30097001) & REVISED WEIGHTS.

Sabre Industries™
Towers and Poles

CONFIDENTIAL
This document and the information contained herein is the confidential trade secret property of Sabre Communications Corporation ("Sabre") and must not be reproduced, copied or used, in whole or in part, for any purpose without the prior written consent of Sabre.
© 2006 Sabre Communications Corporation. All rights reserved.

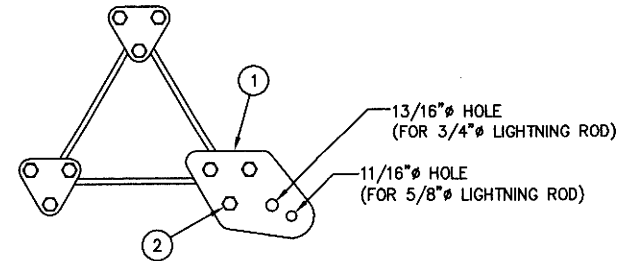
TOWER GROUNDING KITS PER TIA-222-G SPECIFICATONS FOR GUYED TOWERS			
DATE		SIZE	DRAWING NO.
12/7/05		B	C301521
DRAWN BY		SCALE	PAGE
MLC		None	1 OF 1
CHECKED BY		REV	
WMN		2	



C30904103 LIGHTNING ROD MOUNT FOR 1200 & 1800 TLWD

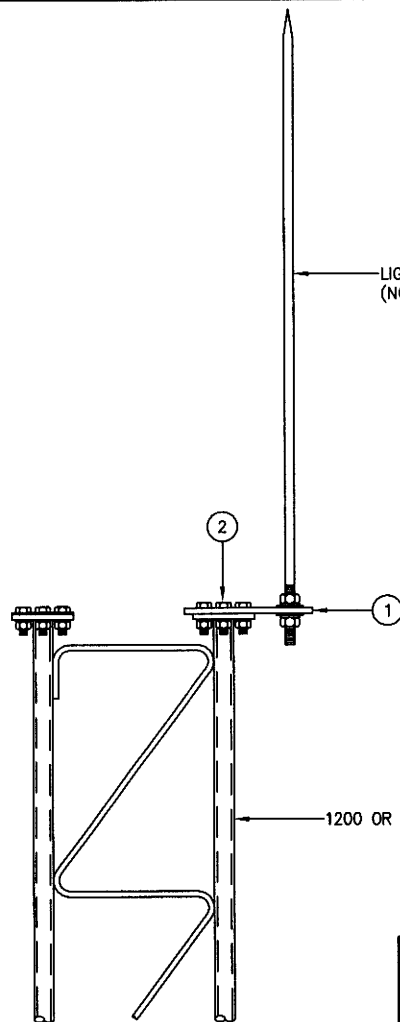
ITEM	QTY.	PART NO.	DESCRIPTION	WEIGHT
1.	1	CS00615	PLATE, LIGHTNING ROD MOUNT	3.6#
2.	3	C40026004	BOLT ASSEMBLY, 1/2 X 1 3/4 A325	0.7#
TOTAL WEIGHT				4.3#

LIGHTNING ROD SHOWN TYPICAL
(NOT INCLUDED)



PLAN VIEW

TOP OF TOWER



ELEVATION VIEW

1200 OR 1800 TLWD SECTION

UNLESS OTHERWISE SPECIFIED ALL DIMENSIONS INCLUDE FINISHES AND ARE IN INCHES			MATERIAL:
TOLERANCES: FRACTIONS $\pm 1/16"$ ANGLES $\pm 1/2$ DEG. DECIMALS $\pm .010"$			TOLERANCES DO NOT APPLY TO RAW MATERIAL
REV	DATE	DRW/CHK	DESCRIPTION



LIGHTNING ROD MOUNT INSTALLATION
MODEL 1200 & 1800 TLWD

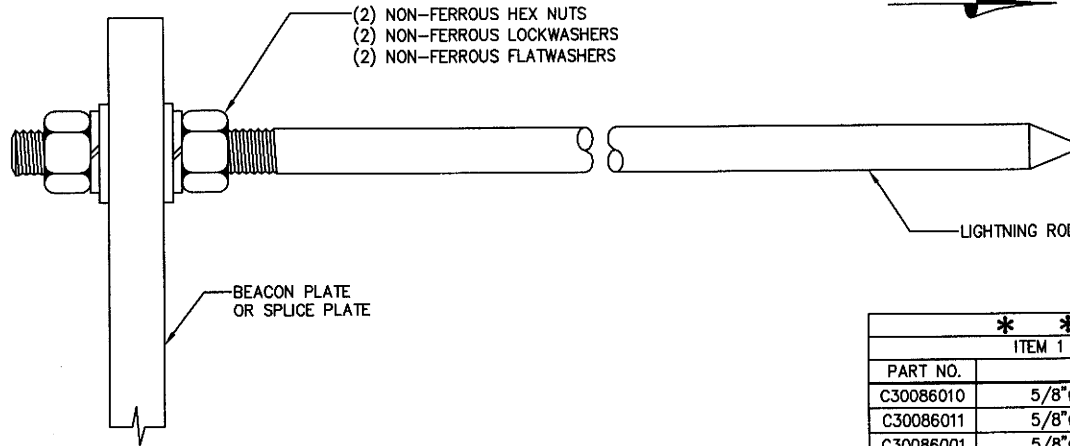
CONFIDENTIAL
This document and the information
contained herein is the confidential trade
secret property of Sabre Communications
Corporation ("Sabre") and must not be
reproduced, copied or used, in whole or in
part, for any purpose without the prior
written consent of Sabre.
© 2006 Sabre Communications Corporation.
All rights reserved.

DATE	11/6/03	SIZE	B	DRAWING NO.	C30904103	REV	0
DRAWN BY	KLE	SCALE	None	PAGE	1 OF 1		
CHECKED BY	DLW						

LIST OF MATERIAL

ITEM	QTY.	PART NO.	DESCRIPTION	WEIGHT
1.	1	* *	LIGHTNING ROD W/(2) NUT, LKW, FLW	* *

ELEVATION VIEW



* *	
ITEM 1	
PART NO.	SIZE
C30086010	5/8"φ X 2'-0"
C30086011	5/8"φ X 3'-0"
C30086001	5/8"φ X 4'-0"
C30086008*	5/8"φ X 4'-0"
C30086005	5/8"φ X 5'-0"
C30086006	5/8"φ X 6'-0"
C30086002	5/8"φ X 8'-0"
C30086009	5/8"φ X 12'-0" (2 PCS.)
C30086007	3/4"φ X 6'-0"
C30086003	3/4"φ X 8'-0"
C30086004	3/4"φ X 10'-0"

*THIS LIGHTNING ROD IS STAINLESS STEEL.

UNLESS OTHERWISE SPECIFIED ALL DIMENSIONS INCLUDE FINISHES AND ARE IN INCHES		MATERIAL:
TOLERANCES: FRACTIONS ± 1/16" ANGLES ± 1/2 DEG. DECIMALS ± .010"		TOLERANCES DO NOT APPLY TO RAW MATERIAL
REV	DATE	DESCRIPTION
7	6/8/07	TDJ/EPD ADDED STAINLESS STEEL 5/8"φ LIGHTNING ROD
6	09/26/06	KMM/CE ADDED 5/8"φ X 2' LIGHTNING ROD OPTION
5	4/28/05	ICHER/HC ADDED 5/8"φ X 3' LIGHTNING ROD OPTION
4	3/19/04	ICHER/CE UPDATED LIST OF MATERIAL
3	08/18/03	ROBT/SGH ADDED 5/8"φ X 12' LIGHTNING ROD OPTION
2	04/02/03	IKW/RWM ADDED 5/8"φ X 8'-0" LIGHTNING ROD OPTION
1	8/19/02	ICHER/ZAK CHANGED PART NOS. TO CATALOG

Sabre Industries
Towers and Poles

TYPICAL LIGHTNING ROD INSTALLATION


CONFIDENTIAL
This document and the information contained herein is the confidential trade secret property of Sabre Communications Corporation ("Sabre") and must not be reproduced, copied or used, in whole or in part, for any purposes without the prior written consent of Sabre.
© 2007 Sabre Communications Corporation. All rights reserved.

DATE	1/15/02	SIZE	B	DRAWING NO.	9025689	REV	7
DRAWN BY	TLH	SCALE	None	PAGE	1	OF 1	
CHECKED BY	CE						

FEDERAL AVIATION ADMINISTRATION
 SPECIFICATIONS: AC 70/7460-1K
 EFFECTIVE DATE: FEBRUARY 1, 2007


CHAPTER 4. LIGHTING
 PARAGRAPH 42
 SECTION e. OBSTRUCTION LIGHTS DURING CONSTRUCTION

AS THE HEIGHT OF THE STRUCTURE EXCEEDS EACH LEVEL AT WHICH PERMANENT OBSTRUCTION LIGHTS WOULD BE RECOMMENDED, TWO OR MORE LIGHTS OF THE TYPE SPECIFIED IN THE DETERMINATION SHOULD BE INSTALLED AT THAT LEVEL. TEMPORARY HIGH OR MEDIUM INTENSITY FLASHING WHITE LIGHTS, AS RECOMMENDED IN THE DETERMINATION, SHOULD BE OPERATED 24 HOURS A DAY UNTIL ALL PERMANENT LIGHTS ARE IN OPERATION. IN EITHER CASE, TWO OR MORE LIGHTS SHOULD BE INSTALLED ON THE UPPERMOST PART OF THE STRUCTURE ANY TIME IT EXCEEDS THE HEIGHT OF THE TEMPORARY CONSTRUCTION EQUIPMENT. THEY MAY BE TURNED OFF FOR PERIODS WHEN THEY WOULD INTERFERE WITH CONSTRUCTION PERSONNEL. IF PRACTICAL, PERMANENT OBSTRUCTION LIGHTS SHOULD BE INSTALLED AND OPERATED AT EACH LEVEL AS CONSTRUCTION PROGRESSES. THE LIGHTS SHOULD BE POSITIONED TO ENSURE THAT A PILOT HAS AN UNOBSTRUCTED VIEW OF AT LEAST ONE LIGHT AT EACH LEVEL.

UNLESS OTHERWISE SPECIFIED ALL DIMENSIONS INCLUDE FINISHES AND ARE IN INCHES		MATERIAL:			TEMPORARY LIGHTING OF TOWER DURING ERECTION						
TOLERANCES: FRACTIONS ± 1/16" ANGLES ± 1/2 DEG. DECIMALS ± .010"		TOLERANCES DO NOT APPLY TO RAW MATERIAL									
CONFIDENTIAL This document and the information contained herein is the confidential trade secret property of Sabre Communications Corporation ("Sabre") and must not be reproduced, copied or used, in whole or in part, for any purpose without the prior written consent of Sabre. © 2007 Sabre Communications Corporation. All rights reserved.				DATE	08/01/91	SIZE	B	DRAWING NO.	902816	REV	7
7 11/30/10 PSB/ZAK CHANGED FAA EFFECTIVE DATE 6 03/02/04 PSB/RGF REDRAWN ONTO B SIZE PAPER 5 03/05/01 JKW/PSB REDRAWN INTO AUTOCAD 2000 4 11/15/00 DLW --- UPDATED TO CURRENT SERIES WAS AC 70/7460/1M 3 07/13/00 DLW --- UPDATED TO CURRENT SERIES 2 08/02/97 DLW --- REDRAWN ONTO NEW TITLEBLOCK 1 11/21/95 PSB --- REDRAWN				DRAWN BY	RGF	CHECKED BY	DLW	SCALE	None	PAGE	1 OF 1
REV	DATE	DRW/CHK	DESCRIPTION								

BOLT INSTALLATION DETAILS:

1. INSTALLATION OF BOLTS: BOLTS FOR TOWERS AND ANTENNAS SHALL BE INSTALLED WITH THE NUTS FACING TO THE OUTSIDE AND/OR TO THE TOP OF THE TOWER, UNLESS PROHIBITED BY LACK OF CLEARANCE.
2. TIGHTENING OF BOLTS: ALL HIGH STRENGTH BOLTS SHALL BE TIGHTENED TO A SNUG-TIGHT CONDITION, AS DEFINED BY AISC.
3. NUT LOCKING DEVICE: ALL NUTS SHALL BE EQUIPPED WITH SOME TYPE OF NUT LOCKING DEVICE. SEE THE INDIVIDUAL DRAWINGS FOR THE TYPE OF NUT LOCKING DEVICE TO BE USED FOR EACH INDIVIDUAL APPLICATION.

UNLESS OTHERWISE SPECIFIED ALL DIMENSIONS INCLUDE FINISHES AND ARE IN INCHES TOLERANCES: FRACTIONS $\pm 1/16"$ ANGLES $\pm 1/2$ DEG. DECIMALS $\pm .010"$	MATERIAL: TOLERANCES DO NOT APPLY TO RAW MATERIAL		BOLT INSTALLATION DETAILS		
CONFIDENTIAL This document and the information contained herein is the confidential trade secret property of Sabre Communications Corporation ("Sabre") and must not be reproduced, copied or used, in whole or in part, for any purpose without the prior written consent of Sabre. © 2007 Sabre Communications Corporation. All rights reserved.		DATE 01/28/00	SIZE B	DRAWING NO. 9014671	REV 3
DRAWN BY MJM		CHECKED BY KJT/DLW		SCALE None	PAGE 1 OF 1
REV DATE DRW/CHK	DESCRIPTION				
3 02/15/08 KLE/DLW	REVISED PER KEITH HINDALL				
2 03/04/04 PSEB/ZAK	REDRAWN ON 10" B" SIZE TITLE BLOCK				
1 03/08/01 KJW/PSEB	REDRAWN IN AUTOCAD 2000				

NOTICE

ALL PARTS ARE TO BE INVENTORIED AND ANY
SHORTAGES REPORTED WITHIN 48 HOURS OF DELIVERY
TO THE CONTRACTING ERECTOR.

SHORTAGES REPORTED AFTER THIS TIME PERIOD WILL
BE CHARGED TO THE CONTRACTOR.

CALL 712-258-6690

TO REACH THE SABRE CONTRACTS DEPARTMENT.

AVISO


Todas las partes serán inventariadas y los faltantes reportados
por el contratista dentro de las 48 horas a partir de la entrega.

Los faltantes reportados después de 48 horas serán cargados al contratista.

Para aclaraciones llame a:

Sabre-Departamento de Contrataciones

(001) 712 258-6690

UNLESS OTHERWISE SPECIFIED ALL DIMENSIONS INCLUDE FINISHES AND ARE IN INCHES		MATERIAL:	 INVENTORY REQUIREMENT SHEET							
TOLERANCES: FRACTIONS $\pm 1/16"$ ANGLES $\pm 1/2$ DEG. DECIMALS $\pm .010"$		TOLERANCES DO NOT APPLY TO RAW MATERIAL								
CONFIDENTIAL This document and the information contained herein is the confidential trade secret property of Sabre Communications Corporation ("Sabre") and must not be reproduced, copied or used, in whole or in part, for any purpose without the prior written consent of Sabre. © 2008 Sabre Communications Corporation. All rights reserved.			DATE	05/12/97	SIZE	B	DRAWING NO.	907901	REV	3
1 03/04/04 PSE/ZAK REDRAWN ON 11" B SIZE TITLEBLOCK			DRAWN BY	ZAK	CHECKED BY	JD	SCALE	None	PAGE	1 OF 1
2 02/25/02 CHE/BNW ADDED SPANISH TEXT										
3 02/27/01 CHE/CE REDRAWN IN AUTOCAD 2000 & UPDATED VERBAGE										
REV	DATE	DRW/CHK	DESCRIPTION							



CUSTOMER NORTHERN PRIDE COMMUNICATIONS, INC.

SITE PORTLAND, ME

B.O.M. 188 FT. MODEL 1800 TLWD GUYED TOWER

PC=PIECE OR=ORANGE
 PLT=PALLET WH=WHITE
 BDL=BUNDLE O/W=OR & WH
 CRT=CRATE N/R=NOT REQ'D
 D=DRUM SP=SPECIAL
 BX=BOX

PACKING

ITEM NO.	NO. REQ'D.	DRAWING		PART NO.	DESCRIPTION	TOTAL WEIGHT LBS.	PAINT	KIT	QTY. OF PKG'S.	PKG. NO.
		NUMBER	REV							
1.					<u>ANCHOR BOLTS & TEMPLATES</u>					
2.	4			C40094012	THREADED ROD ASSEMBLY, 5/8" Ø X 2'-9 H.D.G.	14				
3.	1	C30139066	0	C30139066	BASE BOLT TEMPLATE	5				
4.										
5.										
6.										
7.										
8.										
9.					<u>ANCHOR SHAFTS</u>					
10.	3	C30129033	0	C30129033	WELDMENT, ANCHOR SHAFT (STD.) 7 HOLE, 1 1/4"Ø SHAFT, 14'-2 7/8" OVERALL LENGTH	245				
11.										
12.										
13.										
14.										
15.										
16.										
17.										
18.										
19.										
20.										

DATE	<u>10/2/13</u>	JOB NO.	<u>90417</u>
DRAWN BY	<u>DLK</u>	PRINT NO.	<u>BOM-1</u>
CHECKED BY	<u>KTW</u>	PAGE	<u>1</u> OF <u>6</u>
REV	DATE	DRWCHK	DESCRIPTION
1	10/4/13	LRS/KTW	REVISED ITEM NUMBER 2 (WAS C40041140).



CUSTOMER NORTHERN PRIDE COMMUNICATIONS, INC.
 SITE PORTLAND, ME
 B.O.M. 188 FT. MODEL 1800 TLWD GUYED TOWER

PC=PIECE OR=ORANGE
 PLT=PALLET WH=WHITE
 BDL=BUNDLE O/W=OR & WH
 CRT=CRATE N/R=NOT REQ'D
 D=DRUM SP=SPECIAL
 BX=BOX

PACKING

ITEM NO.	NO. REQ'D.	DRAWING		PART NO.	DESCRIPTION	TOTAL WEIGHT LBS.	PAINT	KIT	QTY. OF PKG'S.	PKG. NO.
		NUMBER	REV							
1.					<u>TOWER SECTIONS</u>					
2.	18	T1800001	0	T1800001	WELDMENT, 10 FT. 1800 TLWD SECTION (STD.)	2443				
3.	2	T1800023	0	T1800023	WELDMENT, 4 FT. 1800 TLWD SECTION (STD.)	132				
4.										
5.										
6.					<u>GUY STRAND</u>					
7.	90'			C40059001	GUY STRAND, 1/4" EHS (3 @ 30')	11				
8.	357'			C40059001	GUY STRAND, 1/4" EHS (3 @ 119')	43				
9.	420'			C40059001	GUY STRAND, 1/4" EHS (3 @ 140')	51				
10.	510'			C40059001	GUY STRAND, 1/4" EHS (3 @ 170')	62				
11.	612'			C40059002	GUY STRAND, 5/16" EHS (3 @ 204')	125				
12.	696'			C40059002	GUY STRAND, 5/16" EHS (3 @ 232')	143				
13.										
14.										
15.										
16.										
17.										
18.										
19.										
20.										

DATE 10/10/13 JOB NO. 90417
 DRAWN BY KTW PRINT NO. BOM-1
 CHECKED BY WTK ✓ PAGE 2 OF 6

REV	DATE	DRW/CHK	DESCRIPTION



CUSTOMER NORTHERN PRIDE COMMUNICATIONS, INC.

SITE PORTLAND, ME

B.O.M. 188 FT. MODEL 1800 TLWD GUYED TOWER

PC=PIECE OR=ORANGE
 PLT=PALLET WH=WHITE
 BDL=BUNDLE O/W=OR & WH
 CRT=CRATE N/R=NOT REQ'D
 D=DRUM SP=SPECIAL
 BX=BOX

PACKING

ITEM NO.	NO. REQ'D.	DRAWING		PART NO.	DESCRIPTION	TOTAL WEIGHT LBS.	PAINT	KIT	QTY. OF PKG'S.	PKG. NO.
		NUMBER	REV							
1.					<u>GUY HARDWARE KITS</u>					
2.	9 KITS			C40100119	HARDWARE KIT FOR 1/4" DIAMETER EHS GUY STRAND	33				
3.					(CATALOG TOWER)					
4.	6 KITS			C40100110	HARDWARE KIT FOR 5/16" DIAMETER EHS GUY STRAND	45				
5.					(CATALOG TOWERS)					
6.										
7.										
8.					<u>GUY BRACKET KITS</u>					
9.	5 KITS			C30904189	GUY BRACKET ASSEMBLY (MODEL 1800 TLWD)	155				
10.										
11.										
12.					<u>SAFETY CLIMB MATERIAL</u>					
13.	1 KIT			Z30012122	188' TUF-TUG SYNTHETIC SAFETY CLIMB MATERIAL	80				
14.										
15.										
16.										
17.										
18.										
19.										
20.										

REV	DATE	DRW/CHK	DESCRIPTION

DATE 10/10/13 JOB NO. 90417
 DRAWN BY KTW PRINT NO. BOM-1
 CHECKED BY WTK ✓ PAGE 3 OF 6



CUSTOMER NORTHERN PRIDE COMMUNICATIONS, INC.
 SITE PORTLAND, ME
 B.O.M. 188 FT. MODEL 1800 TLWD GUYED TOWER

PC=PIECE OR=ORANGE
 PLT=PALLET WH=WHITE
 BDL=BUNDLE O/W=OR & WH
 CRT=CRATE N/R=NOT REQ'D
 D=DRUM SP=SPECIAL
 BX=BOX

PACKING

ITEM NO.	NO. REQ'D.	DRAWING		PART NO.	DESCRIPTION	TOTAL WEIGHT LBS.	PAINT	KIT	QTY. OF PKG'S.	PKG. NO.
		NUMBER	REV							
1.					<u>BASE INSULATOR</u>					
2.	1			C40085002	TOWER BASE INSULATOR, A.O. AUSTIN #A-4722-B W/SPARK GAP, WL= 80,000#	110				
3.										
4.										
5.										
6.					<u>FIBERGLASS INSULATORS</u>					
7.	9			C40080012	GUY STRAIN INSULATOR, FLAGG #150-36R 5/8" X 3'-0", CLEVIS/CLEVIS, 15,000BS	32				
8.										
9.	6			C40080013	GUY STRAIN INSULATOR, FLAGG #210-36R 3/4" X 3'-0", CLEVIS/CLEVIS, 21,000BS	41				
10.										
11.										
12.										
13.					<u>GUY STRAIN INSULATORS</u>					
14.	24			C40067001	GUY STRAND PORCELAIN INSULATOR (502)	24				
15.	27			C40067003	GUY STRAND PORCELAIN INSULATOR (506)	69				
16.										
17.										
18.										
19.										
20.										

REV	DATE	DRWCHK	DESCRIPTION

DATE 10/10/13
 DRAWN BY KTW
 CHECKED BY WTK ✓

JOB NO. 90417
 PRINT NO. BOM-1
 PAGE 4 OF 6



CUSTOMER NORTHERN PRIDE COMMUNICATIONS, INC.

SITE PORTLAND, ME

B.O.M. 188 FT. MODEL 1800 TLWD GUYED TOWER

PC=PIECE OR=ORANGE
 PLT=PALLET WH=WHITE
 BDL=BUNDLE O/W=OR & WH
 CRT=CRATE N/R=NOT REQ'D
 D=DRUM SP=SPECIAL
 BX=BOX

PACKING

ITEM NO.	NO. REQ'D.	DRAWING		PART NO.	DESCRIPTION	TOTAL WEIGHT LBS.	PAINT	KIT	QTY. OF PKG'S.	PKG. NO.
		NUMBER	REV							
1.					<u>BASE TRANSITION PLATE</u>					
2.	1	CS00803	0	CS00803	PLATE, BASE TRANSITION FOR INSULATOR (1800 SRWD)	183	N/R			
3.										
4.										
5.					<u>WIRE ROPE CLIPS</u>					
6.	3			C40056002	WIRE ROPE CLIP, 1/4" H.D.G.	1				
7.										
8.										
9.					<u>LEG CAPS</u>					
10.	1 KIT			C30904138	LEG CAP ASSEMBLY (MODEL 1800 TLWD)	4	N/R			
11.										
12.										
13.					<u>TOWER GROUNDING</u>					
14.	1 KIT			C30152101	T.I.A. GROUNDING KIT, 3 GUY ANCHORS (1 1/4" TO 2" O.D. LEGS)	131				
15.										
16.										
17.					<u>LIGHTNING ROD MOUNT</u>					
18.	1 KIT			C30904103	LIGHTNING ROD MOUNT (MODEL 1200 & 1800 TLWD)	4	N/R			
19.										
20.										

REV	DATE	DRW	CHK	DESCRIPTION

DATE 10/14/13 JOB NO. 90417
 DRAWN BY DRL PRINT NO. BOM-1
 CHECKED BY KTW ✓ PAGE 5 OF 6



CUSTOMER NORTHERN PRIDE COMMUNICATIONS, INC.
 SITE PORTLAND, ME
 B.O.M. 188 FT. MODEL 1800 TLWD GUYED TOWER

PC=PIECE OR=ORANGE
 PLT=PALLET WH=WHITE
 BDL=BUNDLE O/W=OR & WH
 CRT=CRATE N/R=NOT REQ'D
 D=DRUM SP=SPECIAL
 BX=BOX

PACKING

ITEM NO.	NO. REQ'D.	DRAWING		PART NO.	DESCRIPTION	TOTAL WEIGHT LBS.	PAINT	KIT	QTY. OF PKG'S.	PKG. NO.
		NUMBER	REV							
1.					<u>LIGHTNING ROD</u>					
2.	1			C30086001	LIGHTNING ROD 5/8"φ X 4'-0" CCS W/(2) NUT, LKW, & FLW	5				
3.										
4.					<u>MISC. GUY HARDWARE</u>					
5.	48			C40058001	DEADEND GUY GRIP, 1/4"	24				
6.	48			C40057001	DEADEND GUY SLEEVE, 1/4"	1				
7.	54			C40058002	DEADEND GUY GRIP, 5/16"	44				
8.	54			C40057002	DEADEND GUY SLEEVE, 5/16"	2				
9.										
10.					<u>TOWER HARDWARE</u>					
11.	180			C40026005	BOLT ASSEMBLY, 1/2 φ X 2 A325	56				
12.	10			C40026010	BOLT ASSEMBLY, 1/2 φ X 3 1/4 A325	4				
13.	5			C40026025	BOLT ASSEMBLY, 5/8 φ X 2 1/2 A325	3				
14.										
15.	10			C40031003	FLATWASHER, 5/8 φ HARDENED ASTM F436	1				
16.										
17.										
18.	1			C40068001	CAN OF COLD GALV. SPRAY	1				
19.										
20.					REFERENCE DRAWING: 90417-MG					

DATE	<u>10/14/13</u>	JOB NO.	<u>90417</u>
DRAWN BY	<u>DRL</u>	PRINT NO.	<u>BOM-1</u>
CHECKED BY	<u>KTW ✓</u>	PAGE	<u>6</u> OF <u>6</u>
REV	DATE	DRWCHK	DESCRIPTION