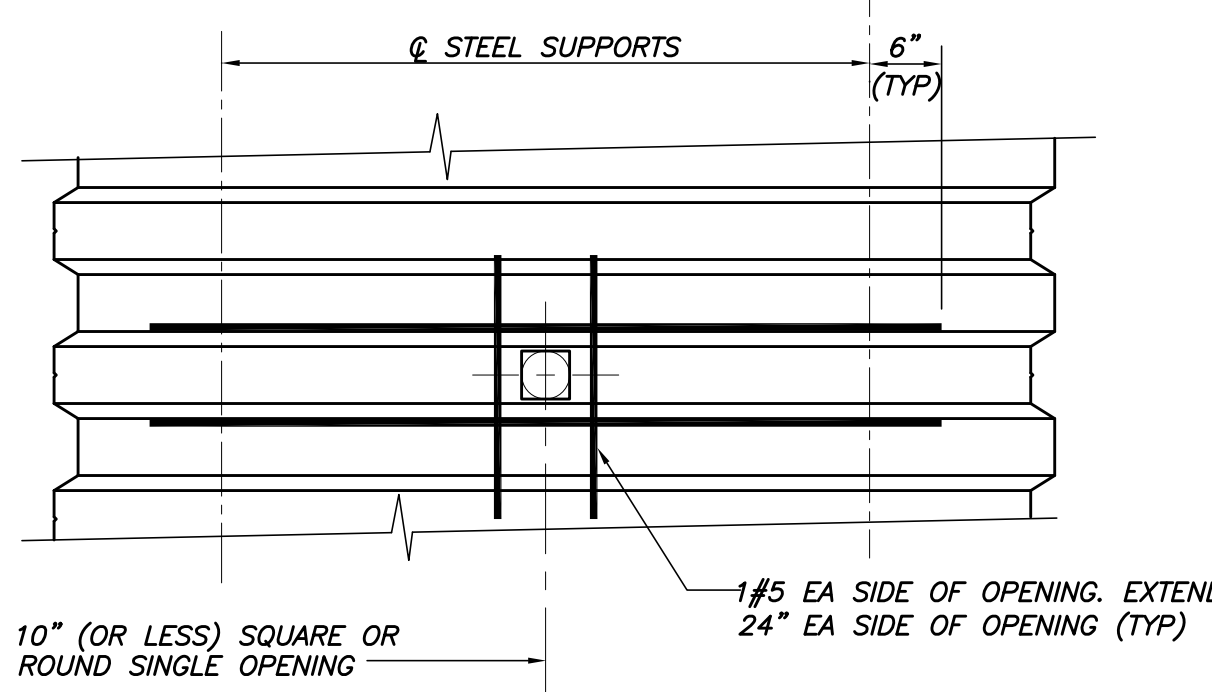
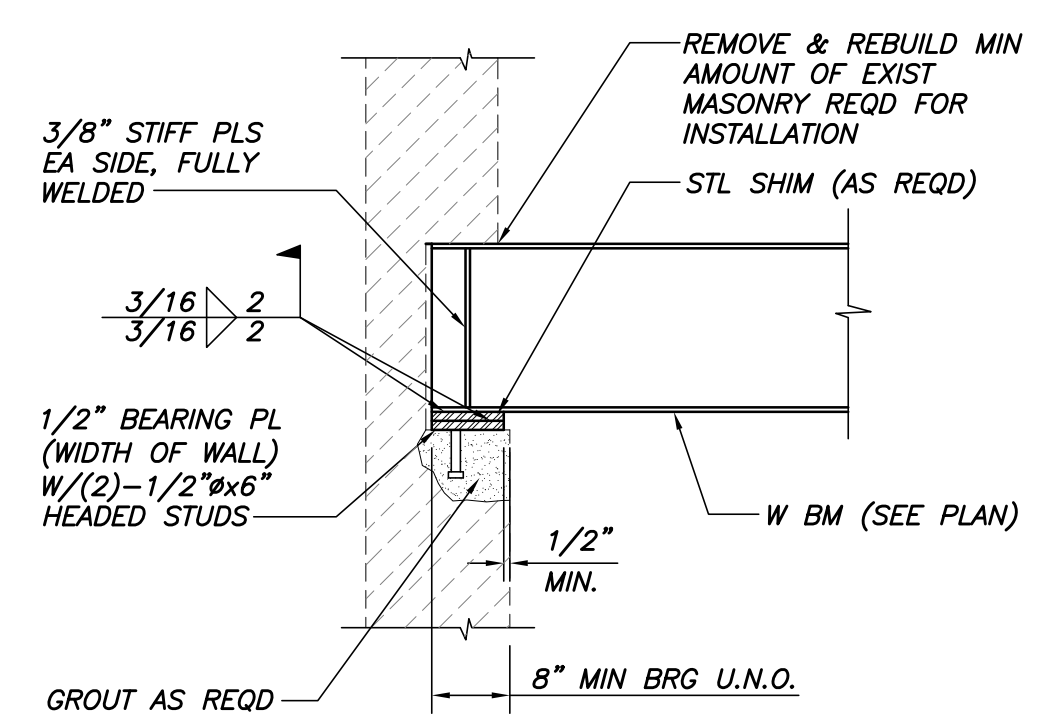


TYP COMPOSITE DECK DETAILS
N.T.S.

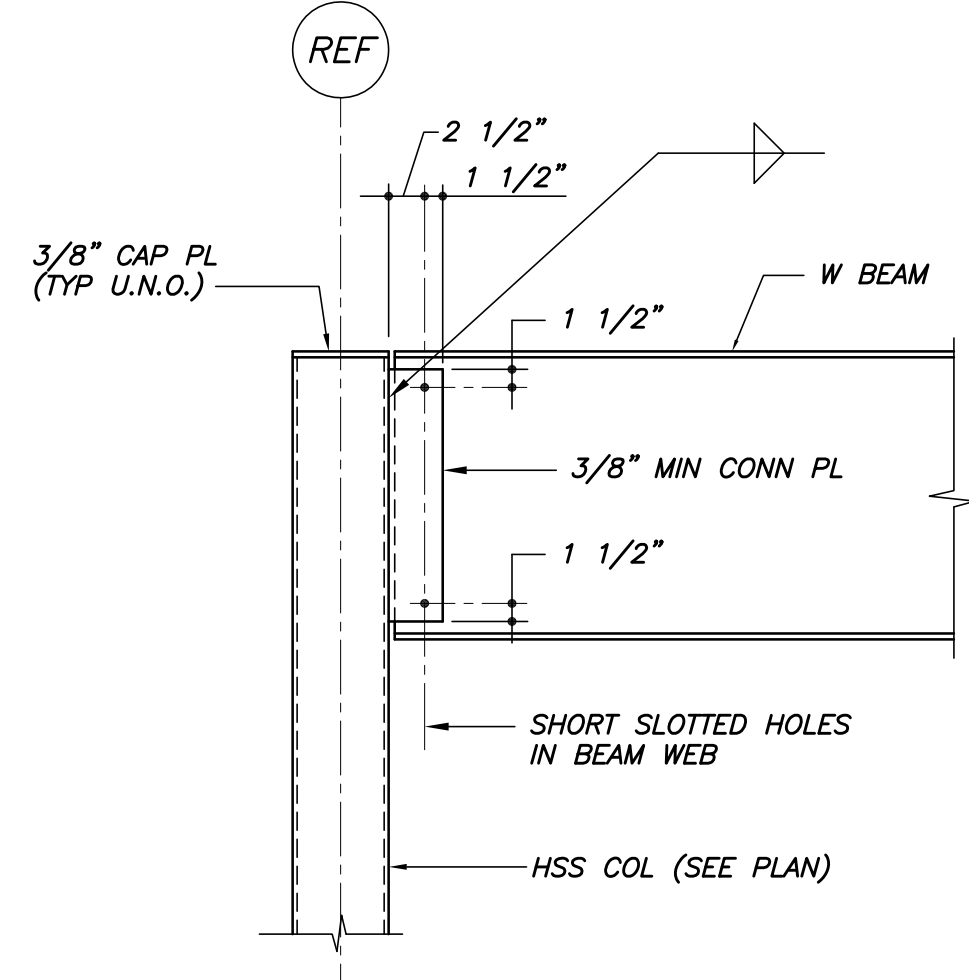


PLAN OF TYP OPENING IN COMPOSITE FLOOR DECK
N.T.S.

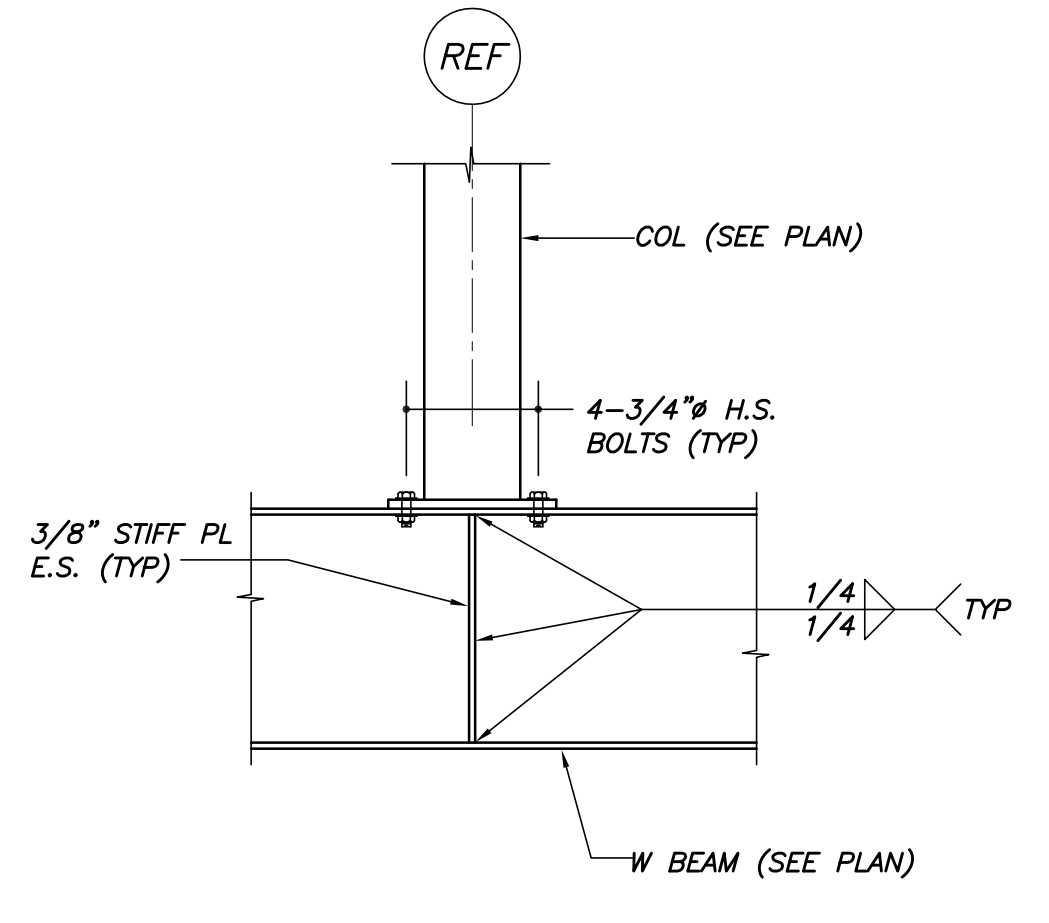
OVERHANG	POUR STOP GAGE
<3"	14 GA
3"-6"	12 GA
7"-9"	10 GA
>9"	SEE SECTIONS & DETAILS



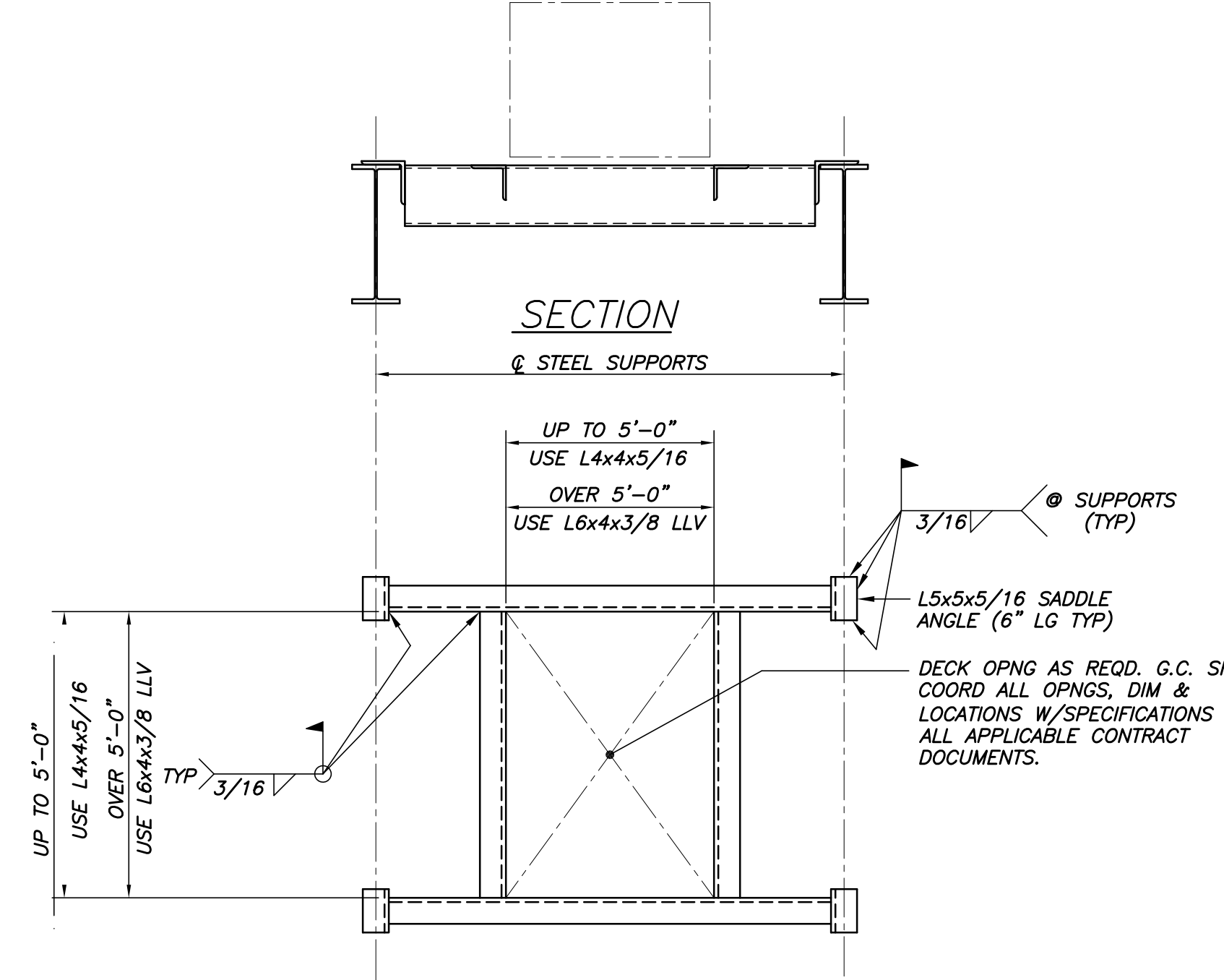
TYP LINTEL DETAIL U.N.O.
N.T.S.



TYP BEAM TO HSS COL CONN U.N.O.
N.T.S.



TYP COL TRANSFER DETAIL
N.T.S.



SECTION
PLAN OF TYP OPENING IN ROOF DECK
N.T.S.

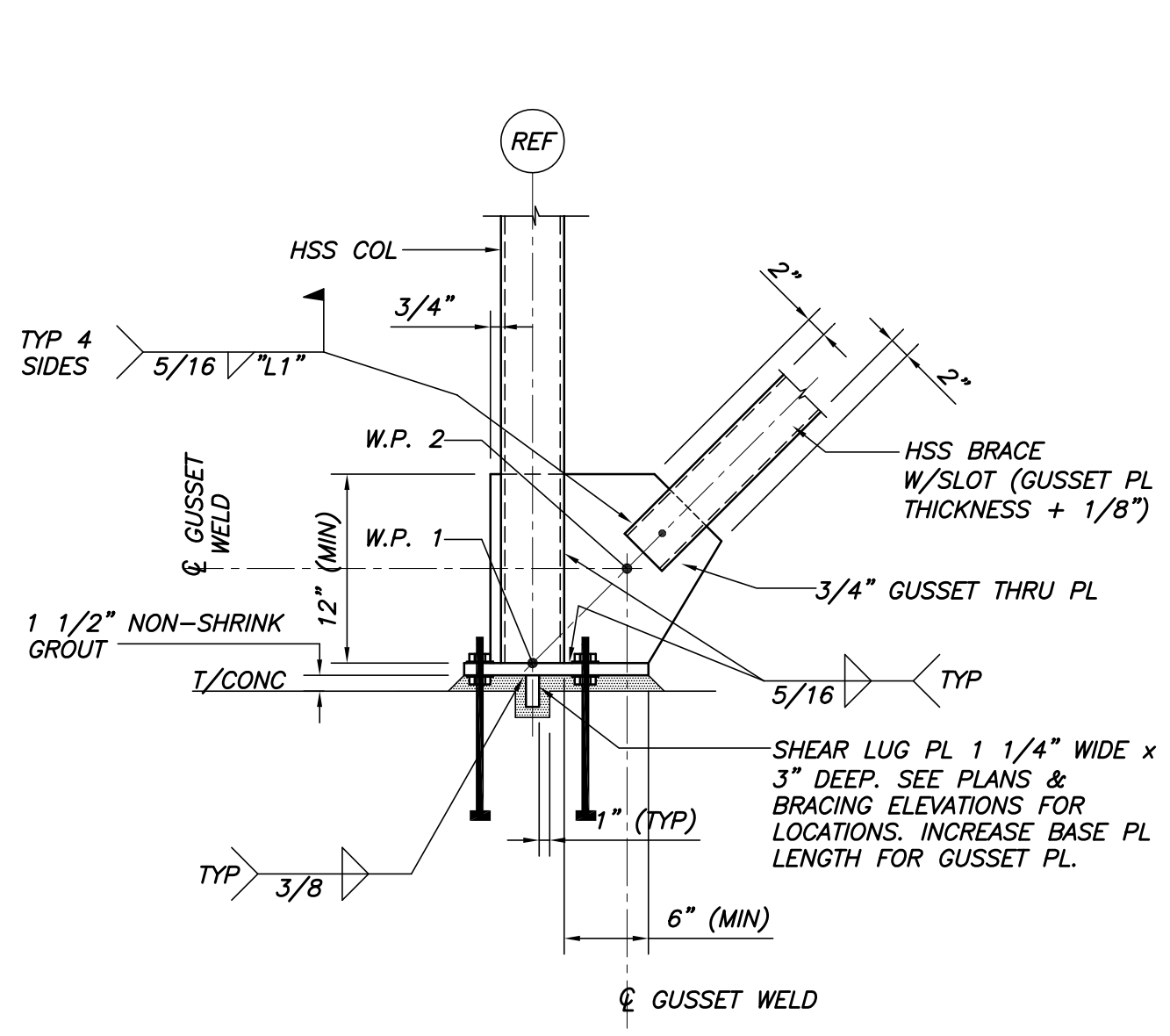
NOTE:
DETAIL TYPICAL AT ROOF DRAINS, EXHAUST FANS AND OTHER MECH AND HVAC EQUIP IF OPENING IS LARGER THAN 12"Ø OR CUTS MORE THAN (1) DECK RIB. FOR OPENINGS LESS THAN 12"Ø, REINF OPNG W/16GA MIN PL. MIN PL LENGTH SHALL BE "Ø"+4". EXTEND AS REQD FOR 2" MIN BRG ON DECK RIB.

SIMPLE SHEAR BEAM CONN. SCHEDULE					
BEAM SIZE	DESIGN REACTION	MINIMUM NO BOLTS		REMARKS	
		1 SIDED CONNECTION	2 SIDED CONNECTION		
WB W10	14K	2	2		
W12, W14	20K	3	2		
W16	40K	4	3		
W18	40K	5	3		
CB	10K	2	2		

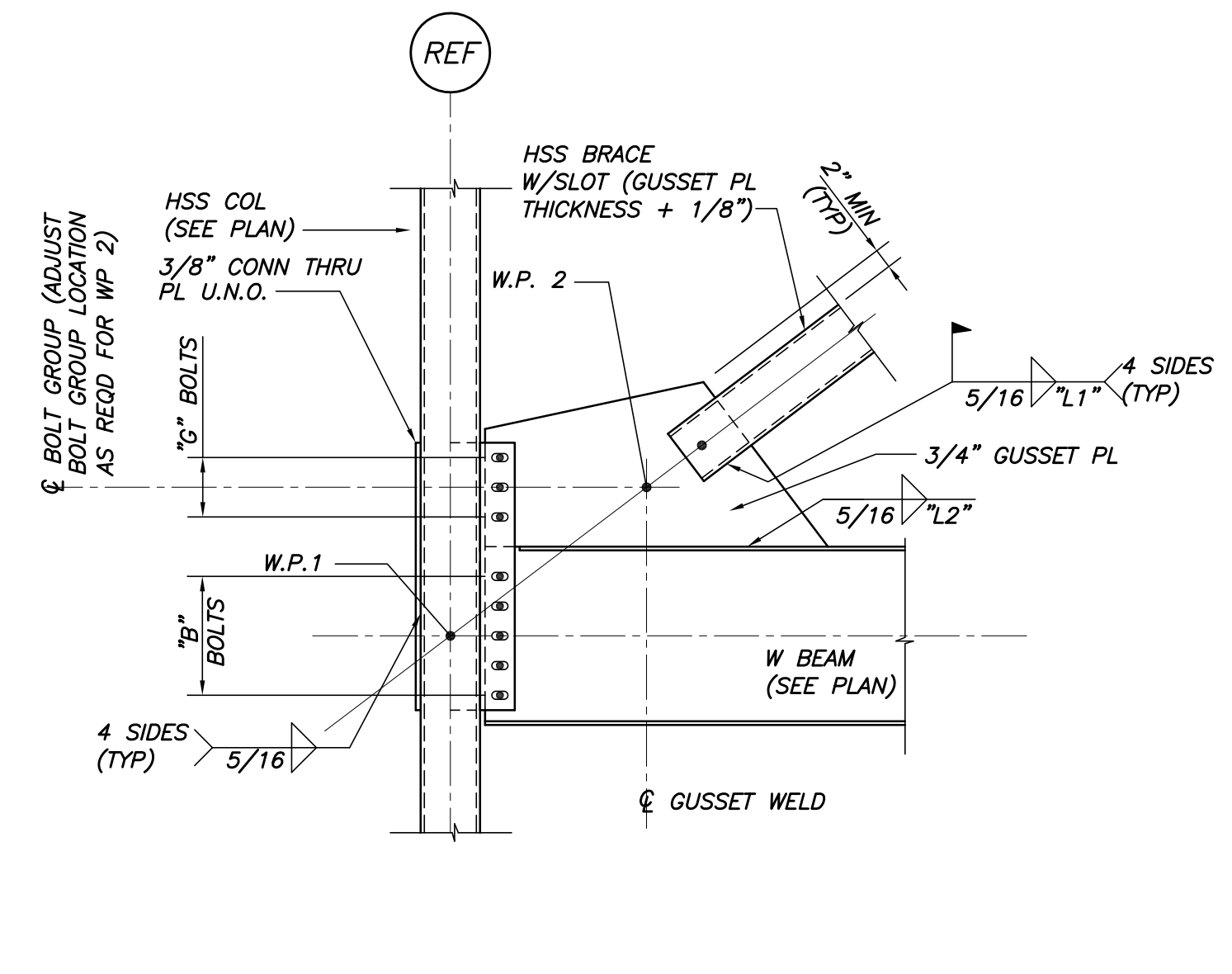
- SIMPLE SHEAR CONNECTIONS NOTES:
- SCHEDULE ABOVE DOES NOT APPLY TO BEAM CONNECTIONS AT BRACED FRAMES. SEE BRACED FRAME CONNECTION SCHEDULE & DETAILS, THIS DWG.
 - SIMPLE SHEAR CONNECTIONS SHALL BE SELECTED FROM THE AISC "MANUAL OF STEEL CONSTRUCTION - 13TH EDITION" USING THE ABOVE REFERENCED REACTIONS AND CRITERIA. REACTIONS INDICATED ARE UNFACTORED. MORE BOLTS THAN REFERENCED IN THE "MINIMUM" SECTIONS ABOVE MAY BE REQUIRED FOR LOAD REQUIREMENTS.
 - CONNECTIONS ARE SUBJECT TO REVIEW ON THE STEEL SHOP DRAWINGS.
 - ALL BOLTS SHALL BE A325 OR A490 FOR SIMPLE SHEAR CONNECTIONS, MIN 3/4"Ø. MINIMUM WELD SIZE SHALL BE 5/16". MINIMUM MATERIAL SIZE FOR PLATES OR ANGLES SHALL BE 3/8"
 - ONE SIDED CONNECTIONS INCLUDE SINGLE PLATES AND SINGLE ANGLE CONNECTIONS.
 - TWO SIDED CONNECTIONS INCLUDE DOUBLE ANGLE AND END PLATE CONNECTIONS.

BRACED FRAME CONNECTION SCHEDULE						
BRACE SIZE	WELD LENGTH (in)		NO. OF BOLTS	BEAM SIZE	NO. OF BOLTS	REMARKS
	"L1"	"L2"				
HSS4x4x1/4	4	18	3	W12, W14, W16, W18	3, 3, 4, 5	
HSS5x5x1/4	5	20	3	W12, W14, W16, W18	3, 3, 4, 5	
HSS6x6x3/8	6	20	4	W16, W18	4, 5	(10)-1"Ø A490 S.C. @ BF-2
HSS6x6x1/2	6	14	3	W18	5	

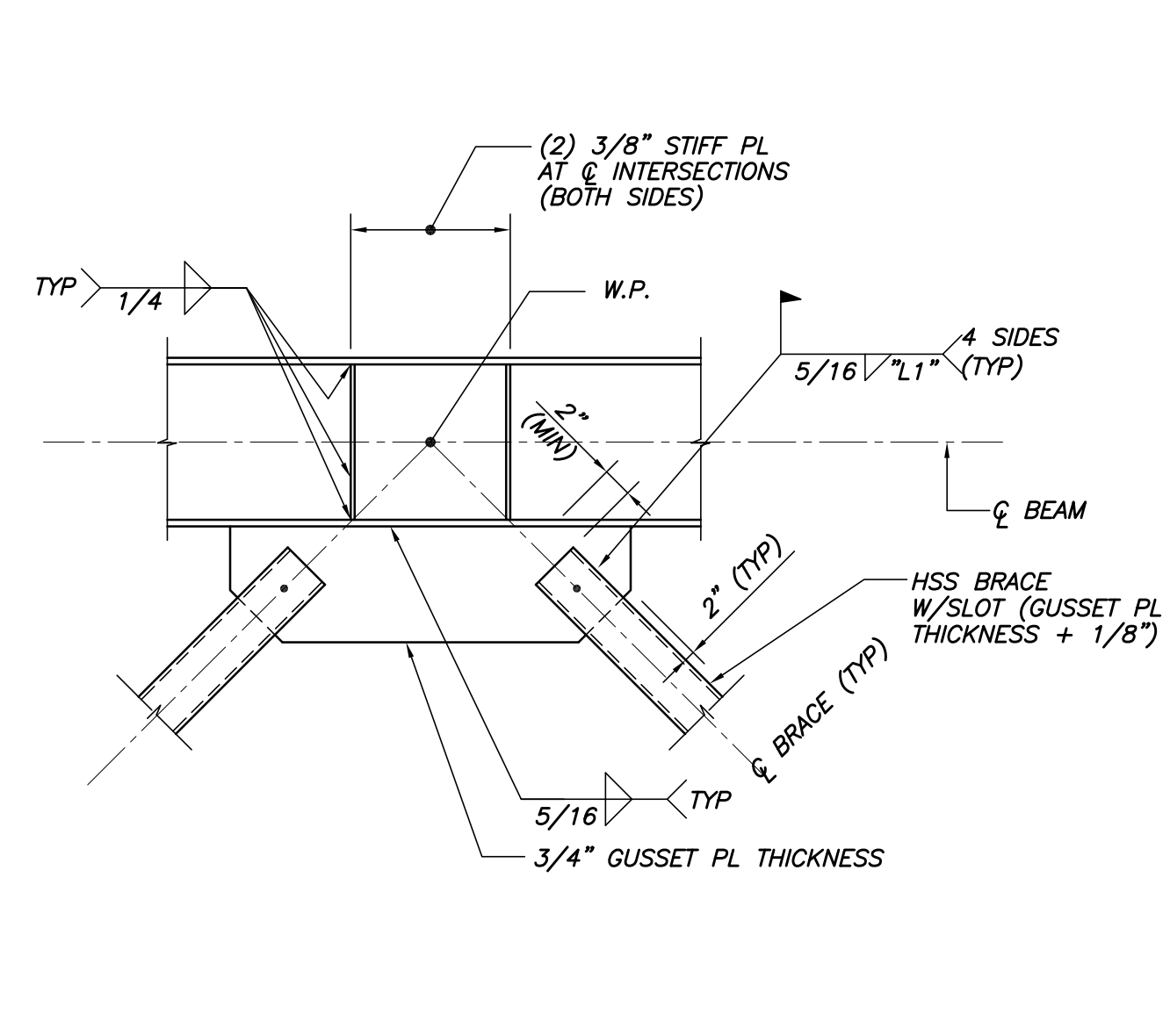
- NOTES:
- ALL WELDS ARE 5/16" FILLET, U.N.O.
 - ALL BOLTS ARE 1"Ø A490 (SC) SLIP CRITICAL BOLTS U.N.O.
 - WELD LENGTH AND NUMBER OF BOLTS ARE MINIMUM.



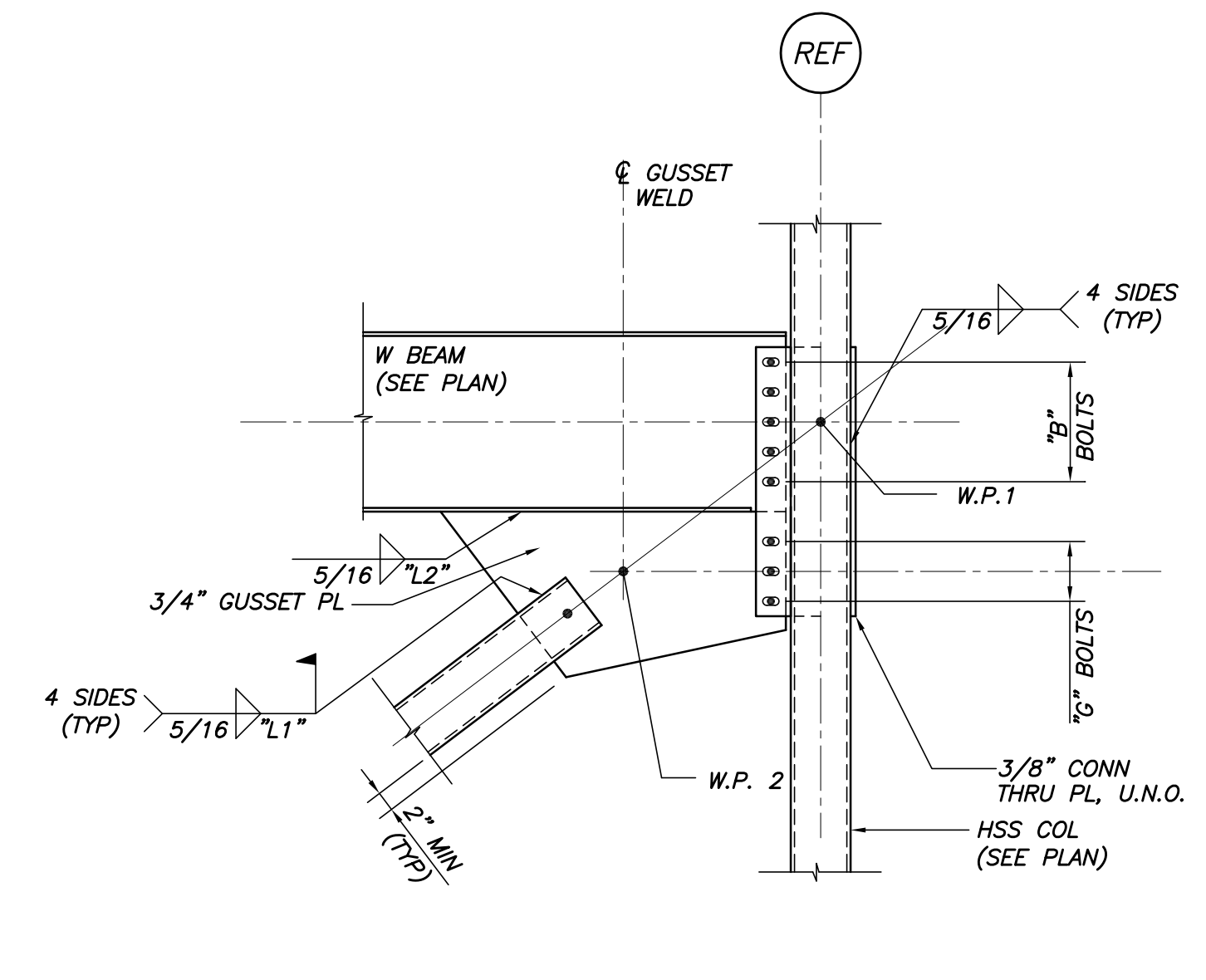
DETAIL A
3/4"=1'-0"



DETAIL B
3/4"=1'-0"



DETAIL C
3/4"=1'-0"



DETAIL D
3/4"=1'-0"