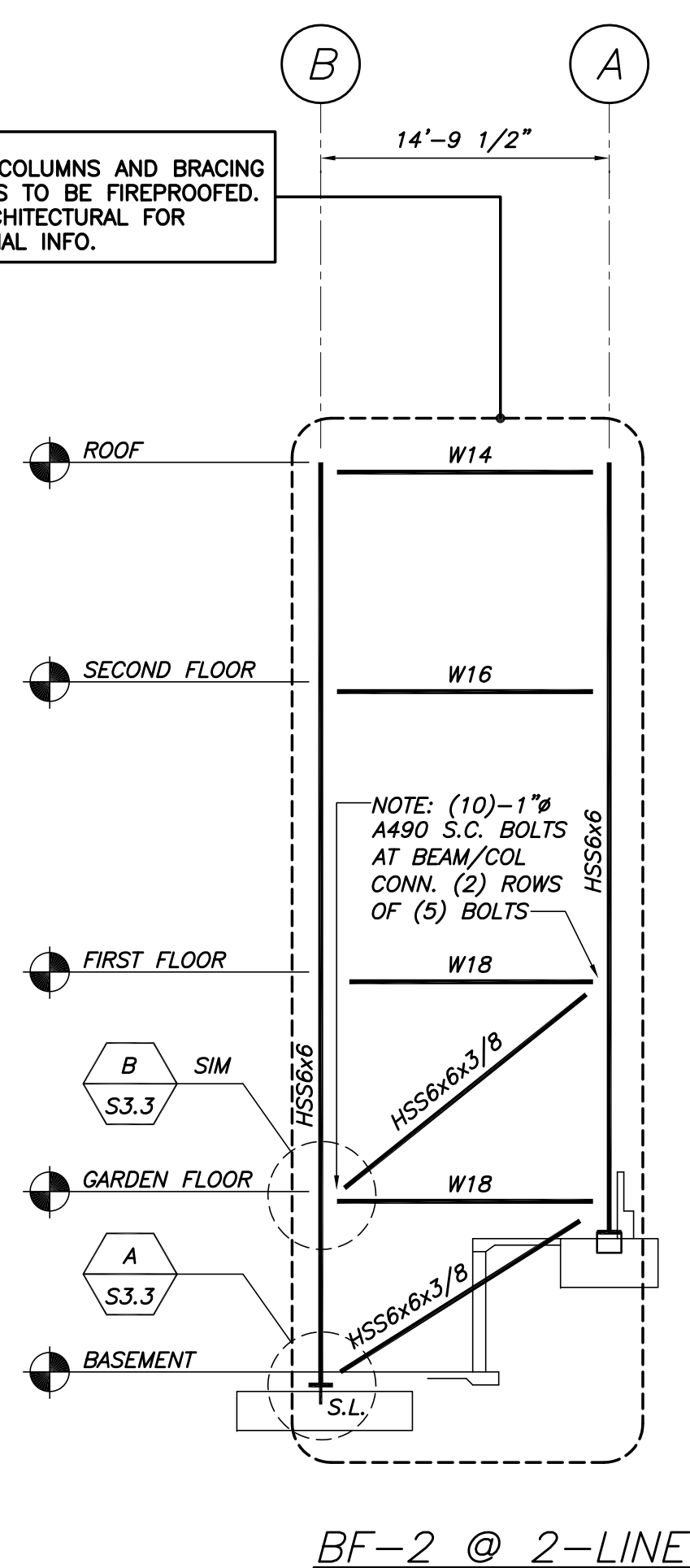
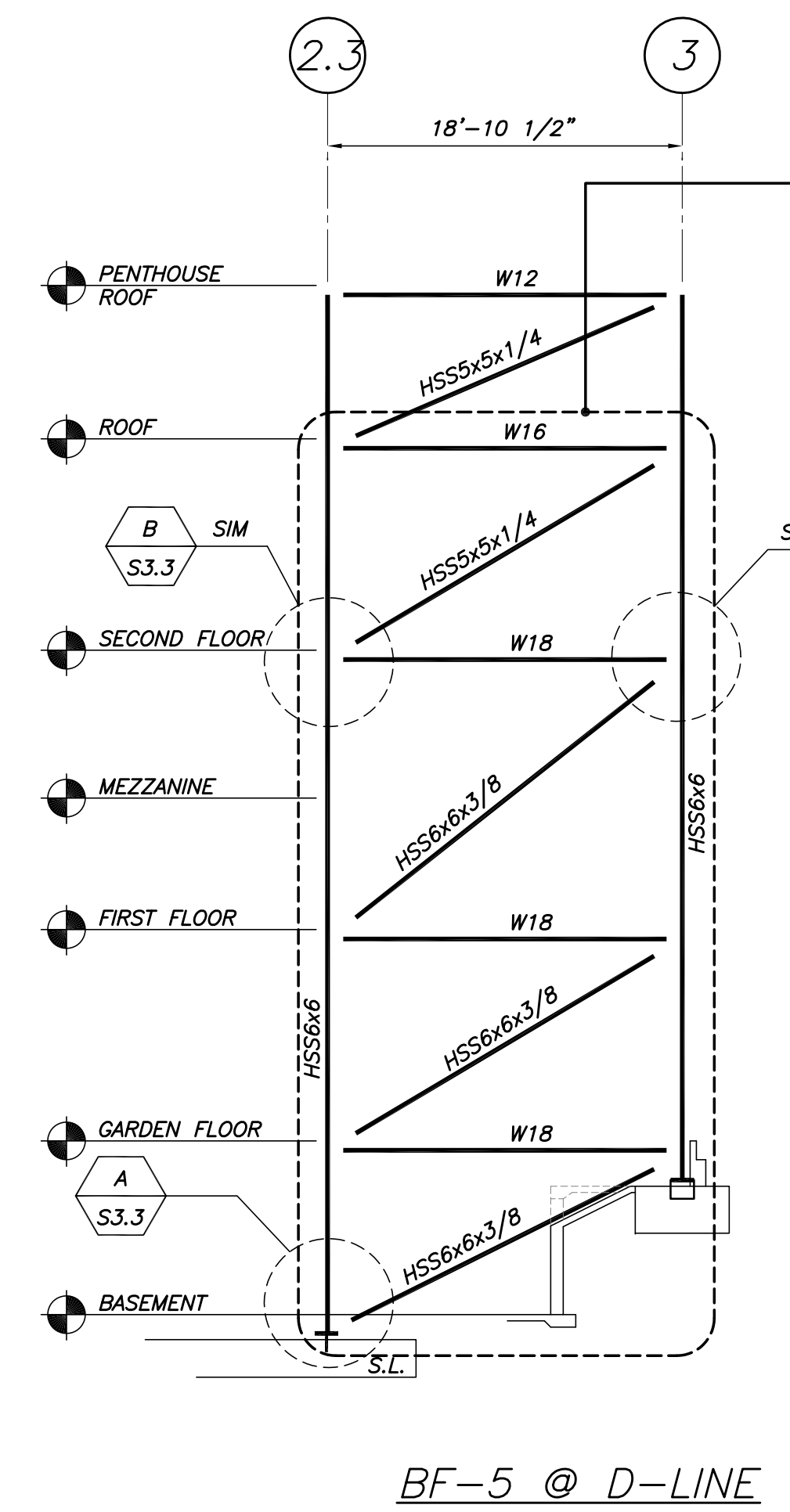
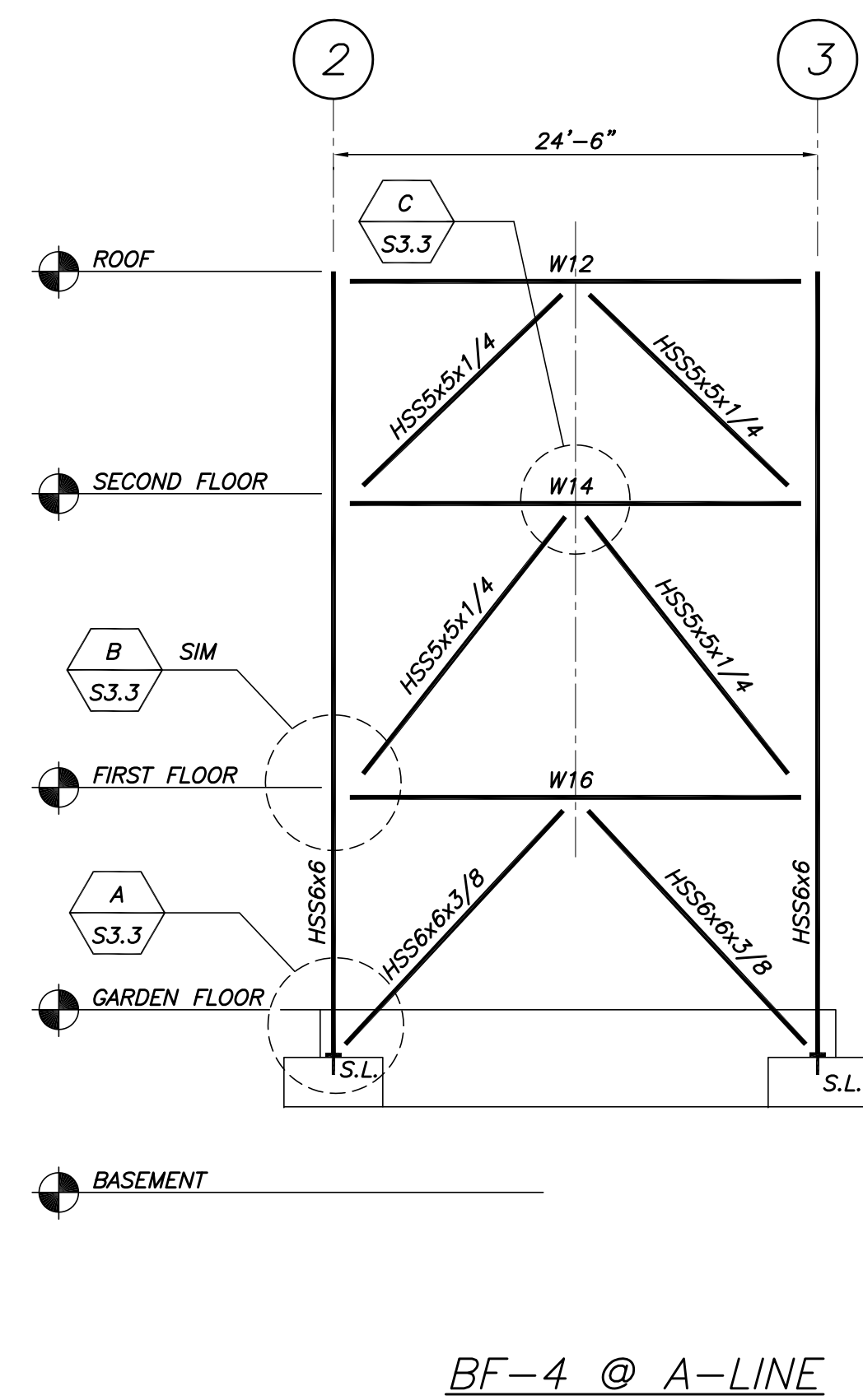
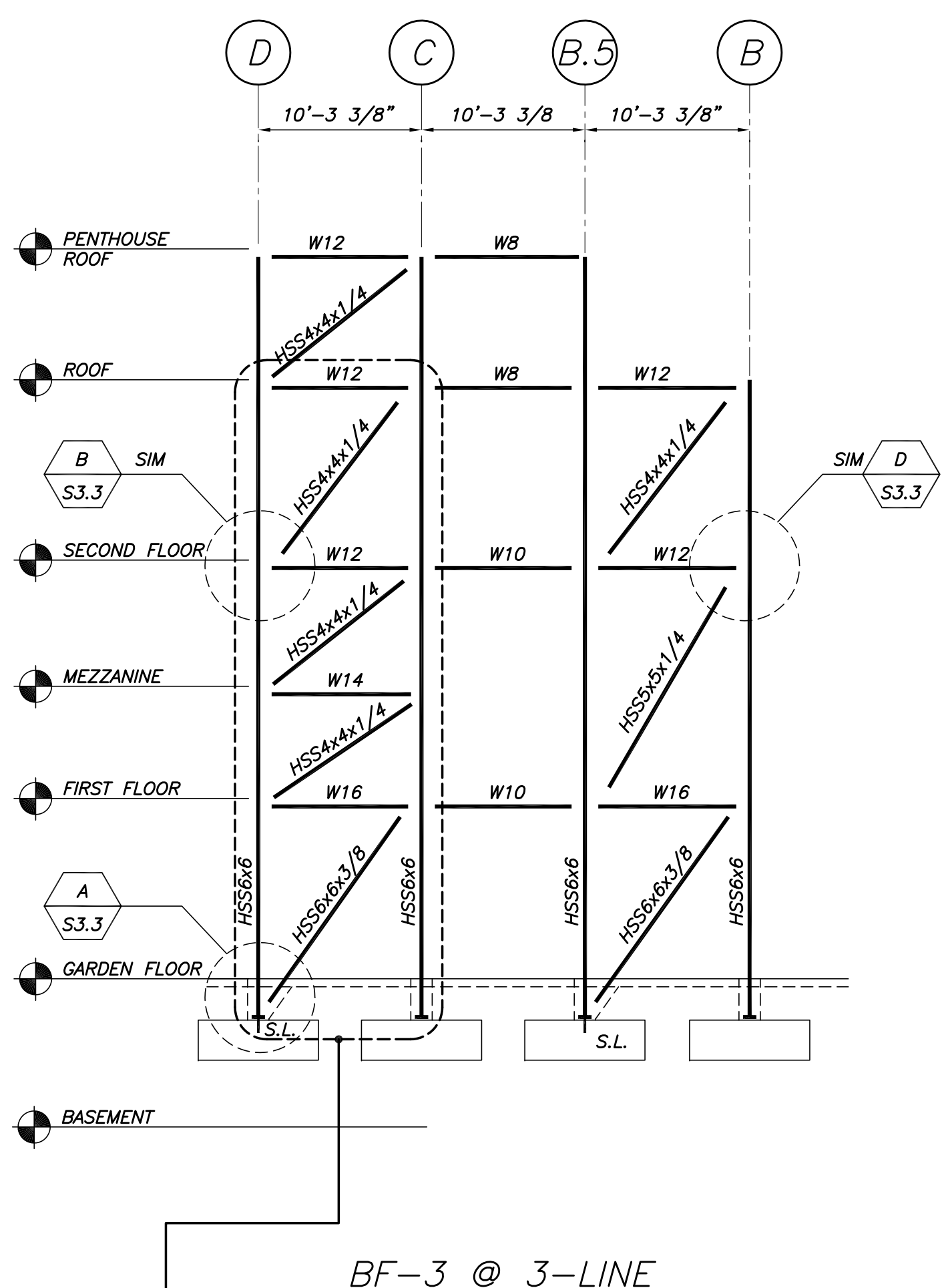


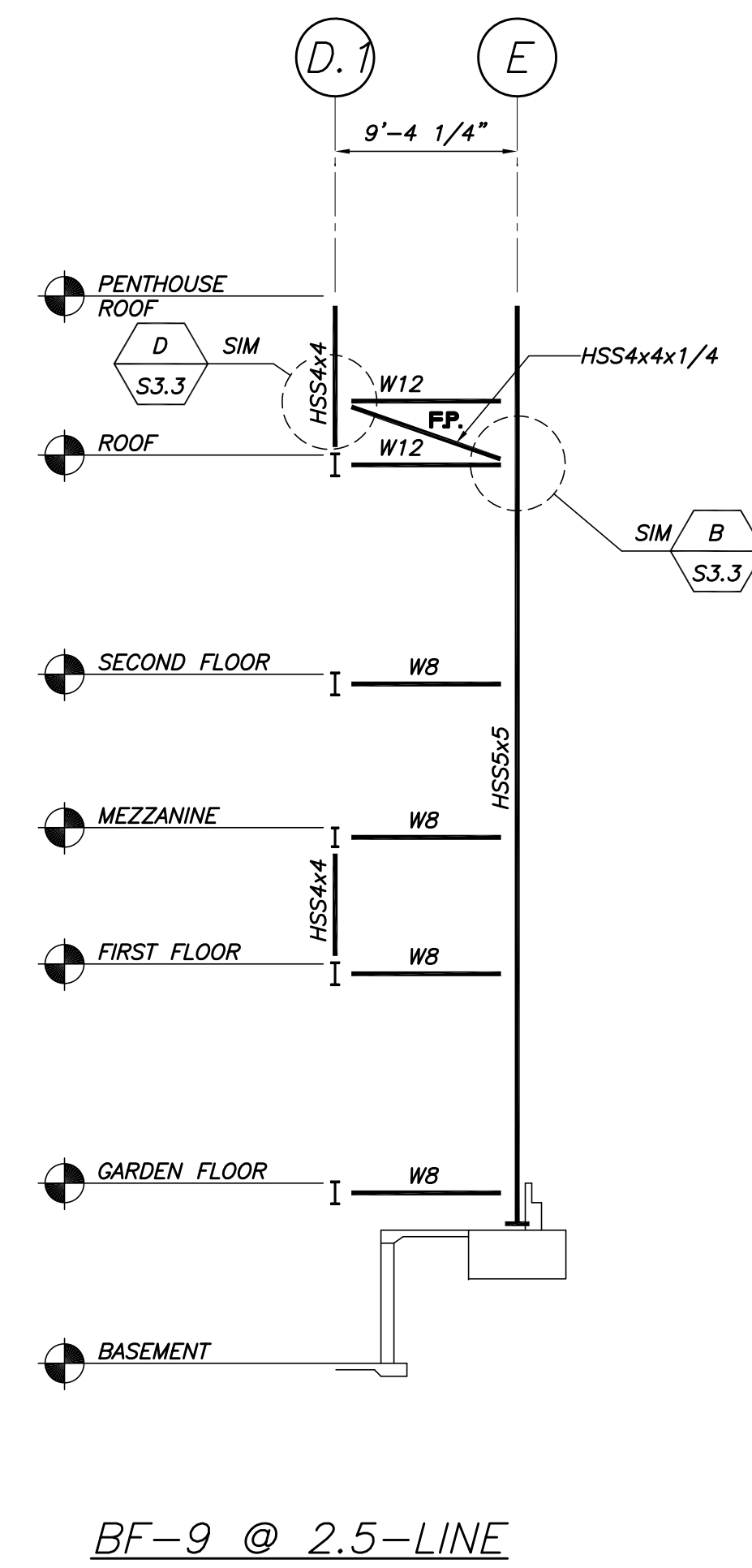
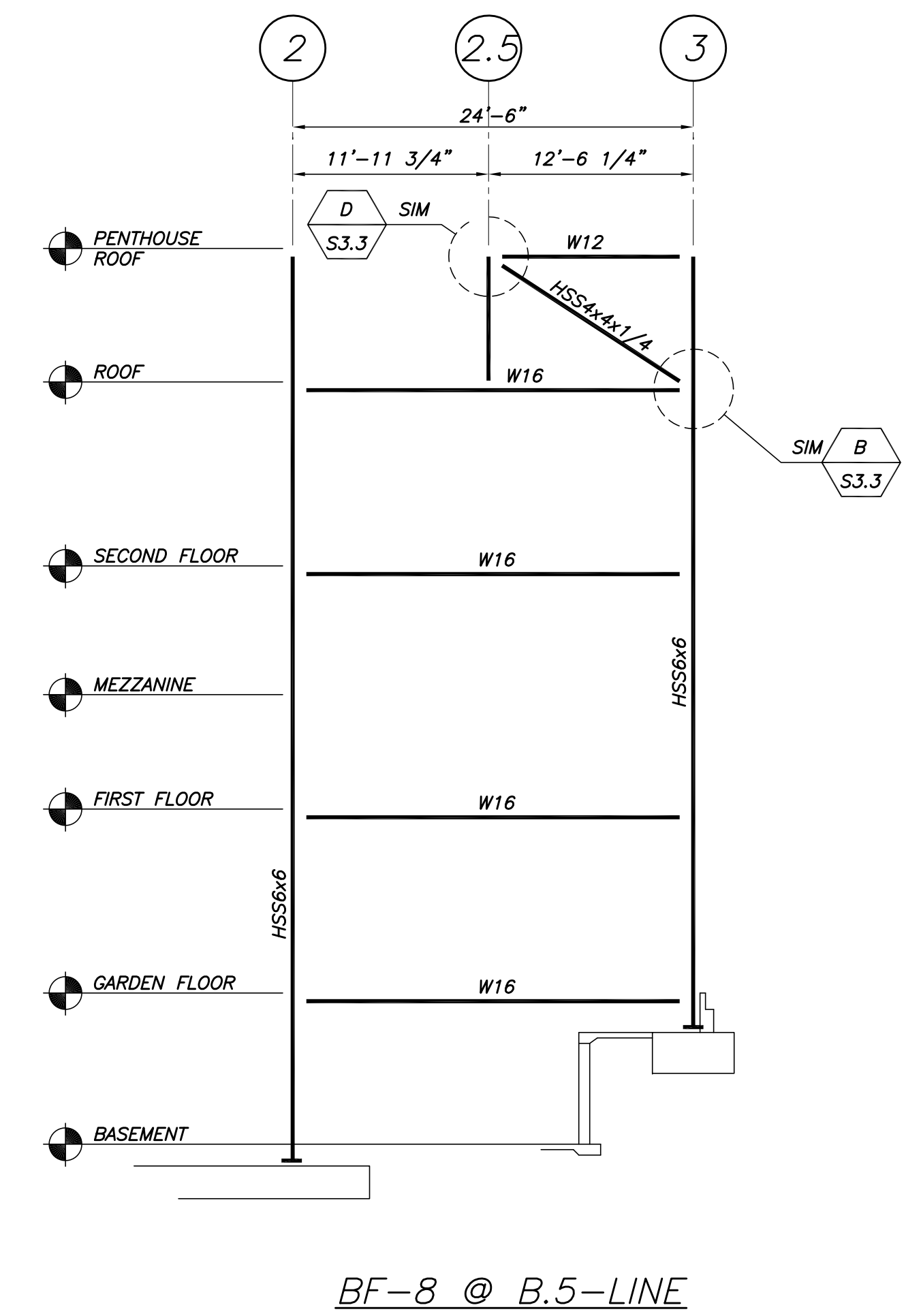
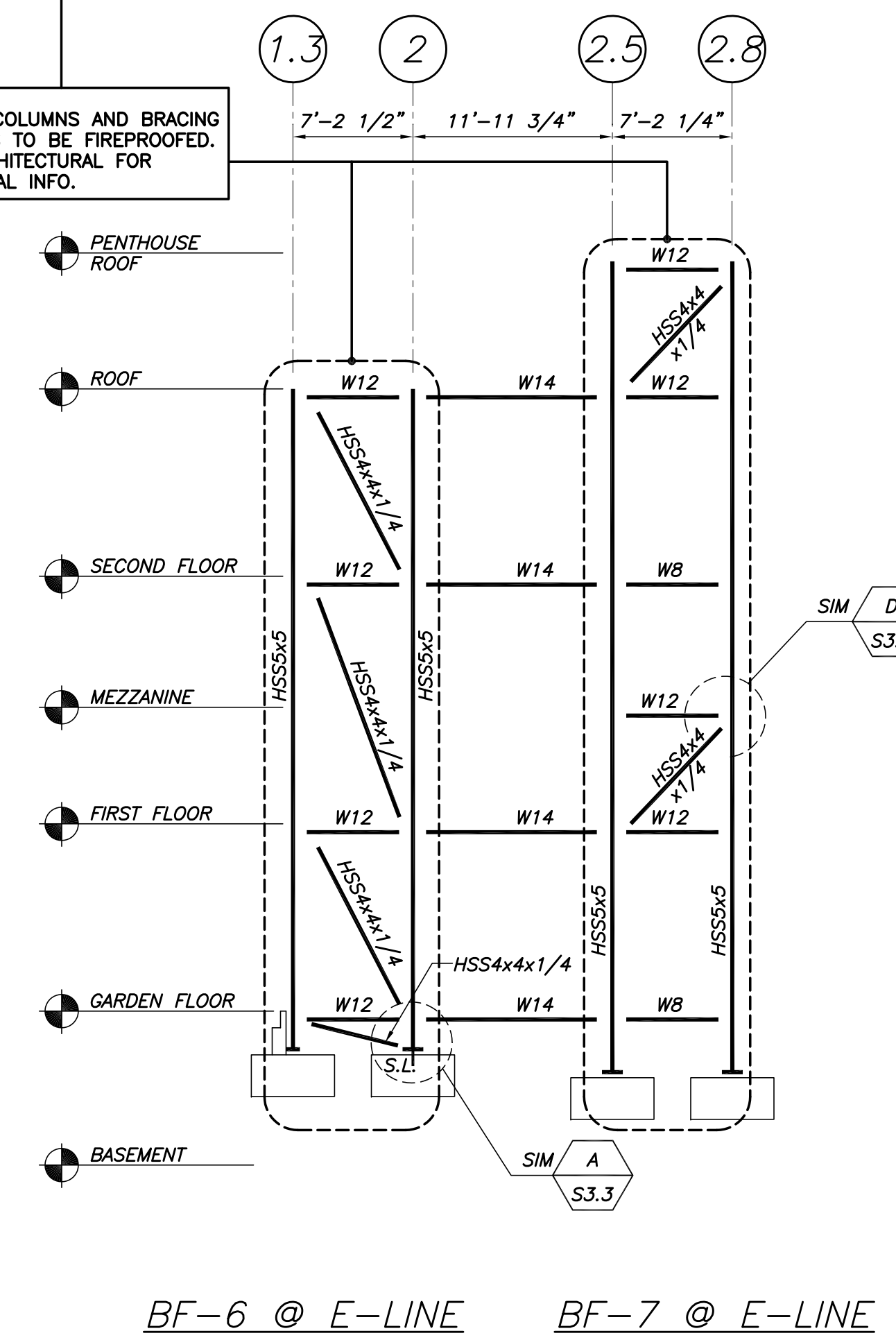
NOTE: BEAMS, COLUMNS AND BRACING MEMBERS TO BE FIREPROOFED. SEE ARCHITECTURAL FOR ADDITIONAL INFO.



NOTE: (10)-1" #4490 S.C. BOLTS AT BEAM/COL. CONN. (2) ROWS OF (5) BOLTS



NOTE: BEAMS, COLUMNS AND BRACING MEMBERS TO BE FIREPROOFED. SEE ARCHITECTURAL FOR ADDITIONAL INFO.



BRACED FRAME ELEVATIONS
1/8"=1'-0"