

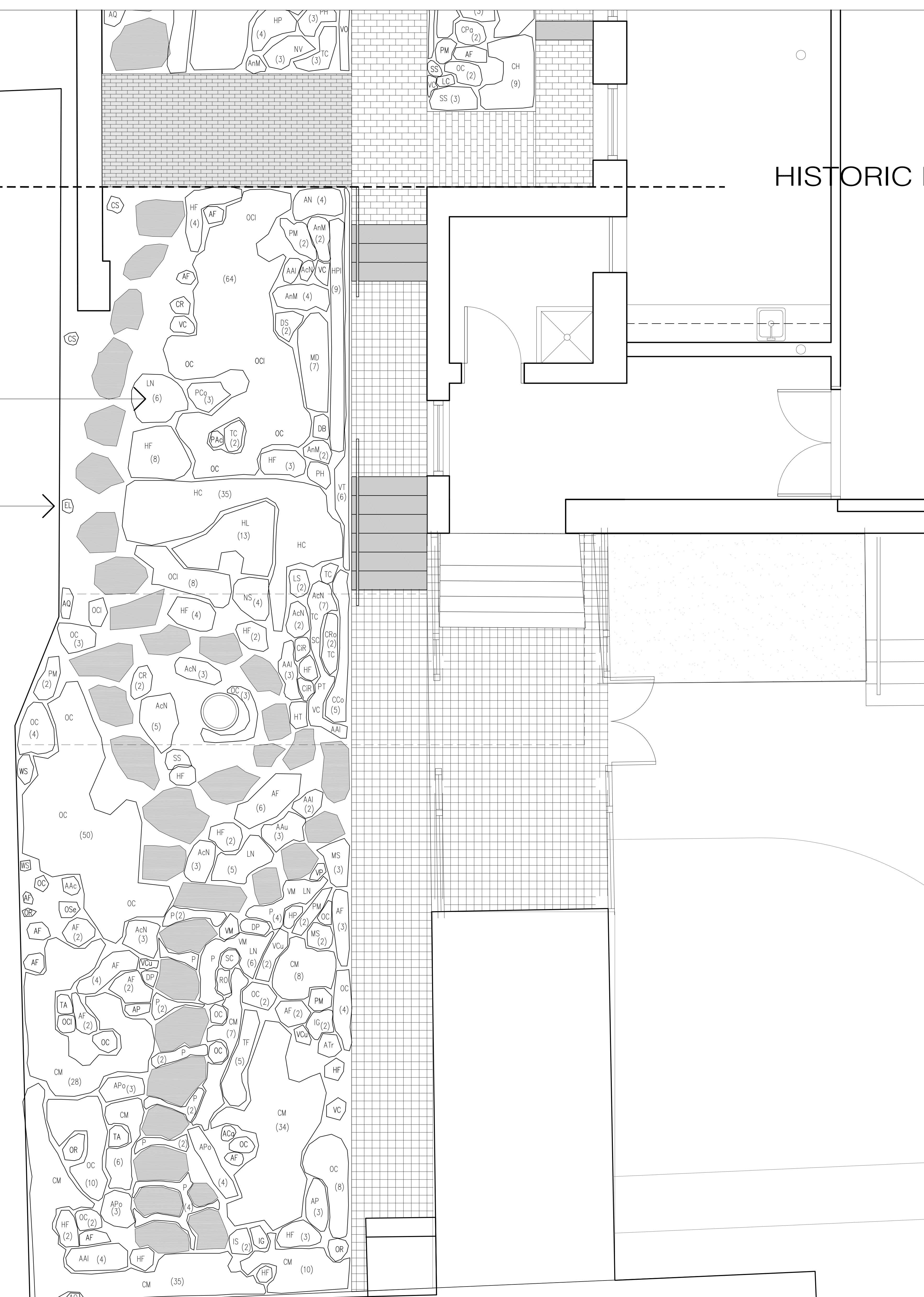
PLANT LIST

KEY	QTY*	BOTANICAL NAME	COMMON NAME	AREA (SF)
PERENNIALS				
AAu	T.B.D.	ACONTIUM AUTUMNALE	AZURE MONKSHOOD	3
AAH	T.B.D.	ACONTIUM NAPELLUS	COMMON MONKSHOOD	36
AA	T.B.D.	ACTAEA ALBA	WHITE BANEERRY	15
AR	T.B.D.	ACTAEA RUBRA	RED BANEERRY	1
AP	T.B.D.	ADIANTUM PEDATUM	AMERICAN MAIDENHAIR FERN	8
APo	T.B.D.	AEGOPDIUM PODOGRARIA	BISHOP'S WEED	10
AM	T.B.D.	ALYSSUM MARITIMUM	SWEET ALYSSUM	16
AJ	T.B.D.	ANDROMEDA JAPONICA	JAPANESE ANDROMEDA	2
Am	T.B.D.	ANTIRRHINUM MAJUS	SNAPDRAGON	9
AV	T.B.D.	AQUILEGIA VILGARIS	GARDEN COLUMBINE	2
ATr	T.B.D.	ARISAEMA TRIPHYLLUM	JACK IN THE PULPIT	1
AS	T.B.D.	ARTEMISIA STELLARIANA	DUSTY MILLER	5
AAc	T.B.D.	ASPIDIUM ACROSTOCHOIDES	NORTH AMERICAN FERN	1
AF	T.B.D.	ASPLENIUM FELIX-FEMINA	LADY FERN	47
AN	T.B.D.	ASTER NOV-BELGI	AUTUMN ASTER	13
AA6	T.B.D.	ASTILBE ASTILOIDES	ASTILBE	2
AIF	T.B.D.	ATHYRIUM FILIX-FEMINA	COMMON LADYFERN	4
CC	T.B.D.	CALLISTEPHUS CHINEIS	CHINA ASTER	5
CP	T.B.D.	CAMPANULA PERSICIFOLIA	PEACH-LEAF BELL FLOWER	7
CR6	T.B.D.	CAMPANULA ROTUNDFOLIA	BLUE-BELL BELL FLOWER	2
CC6	T.B.D.	CHRYSANTHEMUM COCCINEUM	PAINTED DAISY	13
CH	T.B.D.	CHRYSANTHEMUM HORTORUM	AMERICAN CRANBERRYBUSH	26
CL	T.B.D.	CHRYSANTHEMUM LEUCANTHEMUM HYBRIDUM	OXEYE DAISY	1
CP6	T.B.D.	CHRYSANTHEMUM FARTHENUM	FEVERFEW	7
CR	T.B.D.	CHRYSANTHEMUM RUBELLUM	MUM DAISY	7
CS6	T.B.D.	CHRYSANTHEMUM SPECIES	CHRYSANTHEMUM	8
CR	T.B.D.	CMICIFUGA RACEMOSA	BLACK COHOSH	5
CN	T.B.D.	COMMELINA NUDIFLORA	NAKEDSTEM DENTFLOWER	12
OM	T.B.D.	CONVALLARIA MAJALIS	LILY OF THE VALLEY	140
CPu	T.B.D.	CYPREDIUM PUBESCENS	LARGE YELLOW LADY-SLIPPER	3
DH	T.B.D.	DELPHINIUM HYBRID	HYBRID DELPHINIUM	3
DB	T.B.D.	DIANTHUS BARBATUS	SWEET WILLIAM	5
DS	T.B.D.	DICENTRA SPECTABILIS	BLEEDING HEART	2
DP	T.B.D.	DIGITALIS PURPUREA	COMMON FOXGLOVE	2
FS	T.B.D.	FUCHSIA SPECIOSA	FUCHSIA	
HA	T.B.D.	HELENIUM AUTUMNALE	COMMON SNEEZEWEED	3
HH	T.B.D.	HELIOPSIS HELIANTHOIDES	OXEYE SUNFLOWER	17
HP	T.B.D.	HELIOTROPUM PERUVIANUM	CHERRYPIE	8
HF	T.B.D.	HEMEROCALLIS FLAVA	YELLOW DAYLILY	147
HFu	T.B.D.	HEMEROCALLIS FULVA	ORANGE DAYLILY	35
HT	T.B.D.	HEPATICA TRILOBA	LIVERWORT	1
HC	T.B.D.	HOSTA CORDATA	UNKNOWN HOSTA	35
HL	T.B.D.	HOSTA LANCEOLATA	PLANTAIN LILY	17
HPI	T.B.D.	HOSTA PLANTAGINEA	FRAGRANT HOSTA	10
IG	T.B.D.	IRIS GERMANICA	GERMAN IRIS	28
IS	T.B.D.	IRIS SIBIRICA	SIBERIAN IRIS	4
LC	T.B.D.	LILIUM CANDIDUM	MADONNA LILY	6
LS	T.B.D.	LILIUM SPECIOSA	SPOTTED FLOWER LILY	2
LT	T.B.D.	LILIUM TIGRINUM	TIGER LILY	7
MS	T.B.D.	MENTHA SPICATA	SPEARMINT	5
MD	T.B.D.	MONARDA DIDYMA ROSEA	BEEBALM	7
MSc	T.B.D.	MYOSOTIS SCORPIOIDES	FORGET ME NOT	18
NP	T.B.D.	NARCISSUS POETICA	POET'S NARCISSUS	9
NS	T.B.D.	NARCISSUS SPECIES	DAFFODILS	4
NV	T.B.D.	NARCISSUS VON SION	OLD-FASHIONED DBL. DAFFODIL	3
OB	T.B.D.	ONOTHERA BIENNIS	COMMON EVENING PRIMROSE	50
OS6	T.B.D.	ONOCLEA SENSIBILIS	SENSITIVE FERN	1
OS	T.B.D.	ONOCLEA STRUTHOPTERIS	OSTRICH FERN	18
OC	T.B.D.	OSMUNDA CINNAMOMEA	CINNAMON FERN	111
OC	T.B.D.	OSMUNDA CLAYTONIANA	INTERRUPTED FERN	45
OR	T.B.D.	OSMUNDA REGALIS	ROYAL FERN	7
PO	T.B.D.	PAEONIA OFFICIALIS	COMMON PEONY	6
PH	T.B.D.	PELAGONIUM HORTORUM	COMMON GERANIUM	1
P	T.B.D.	PETROSELINUM	PARSLEY	19
PA	T.B.D.	PHALARIS ARUNDINACEA	REED CANARYGRASS	3
PD	T.B.D.	PHEGopteris DRYopteris	N. AM. BEECH FERN	1
PP	T.B.D.	PHLOX PANICULATA	GARDEN PHLOX	18
PC	T.B.D.	POLYMONIUM CAERULEUM	JACOB'S LADDER	2
PC6	T.B.D.	POLYGONATUM COMMUTATUM	SMOOTH SOLOMON'S SEAL	3
PM	T.B.D.	POLYGONATUM MULTIFLORUM	SOLOMON'S SEAL	64
PAc	T.B.D.	POLYSTICHUM ACROSTOCHOIDES	CHRISTMAS FERN	8
PN	T.B.D.	PTERIS NODULOSA	OSTRICH FERN	11
RO	T.B.D.	ROSMARINUS OFFICINALIS	ROSEMARY	4
SS	T.B.D.	SALVIA SPLENDENS	SALVIA	33
SC	T.B.D.	SANGUINARIA CANADENSIS	BLOODROOT	16
SSp	T.B.D.	SEDUM SPECTABILE	SHOWY SEDUM	4
TA	T.B.D.	THALICTRUM ADIANTIFOLIUM	SMALL MEADOW RUE	2
TC	T.B.D.	TIARELLA CORDIFOLIA	FOAMFLOWER	23
TF	T.B.D.	TRADESCANTIA FLUMINENSIS	WANDERING JEW	5
TV	T.B.D.	TRADESCANTIA VIRGINIANA	VIRGINIA SPIDERWORT	1
TAu	T.B.D.	TRITONIA AURANTICA	ORANGE TRITONIA	3
TB	T.B.D.	TUBER BEGONIA	TUBEROUS BEGONIA	5
VB	T.B.D.	WOLA BLANDA	SWEET WHITE VIOLET	6
VC	T.B.D.	WOLA CANADENSIS	CANADA VIOLET	46
VC6	T.B.D.	WOLA CORNUTA	TUFTED PANSY	1
VCu	T.B.D.	WOLA CUCULLATA	BLUE MARSH VIOLET	4
VO	T.B.D.	WOLA ODORATUS	UNKNOWN VIOLET	13
VP	T.B.D.	WOLA PEACOCK	UNKNOWN VIOLET	4
VPu	T.B.D.	WOLA PUBESCENS	DOWNY YELLOW VIOLET	1
VT	T.B.D.	WOLA TRICOLOR	JOHNNY JUMP-UP	11
-	-	ANNUALS	-	128
-	-	NATIVE WILDFLOWERS	-	47
GROUNDCOVERS AND VINES				
AC6	T.B.D.	ASARUM CANDENSE	WLD GINGER	5
AQ	T.B.D.	AMPELOPSIS QUINQUEFOLIA	VIRGINIA CREEPER	3
AU	T.B.D.	ARCOSTAPHYLUS UVA-URS	BEARBERRY	14
CS	T.B.D.	CELASTRUS SCANDENS	AMERICAN BITTERSWEET	2
EL	T.B.D.	ECHINOCYSTIS LOBATA	WILD CUCUMBER	1
EK	T.B.D.	EUONYMUS KEMENSIS	WINTERCREEPER	2
ER	T.B.D.	EUONYMUS RADICANS	DWARF WINTERCREEPER	1
LN	T.B.D.	LYSMACHIA NUMMULARIA	CREEPING JENNY	14
PT	T.B.D.	PACHYSANDRA TERMINALIS	JAPANESE SPURGE	4
VM	T.B.D.	VINCA MINOR	LESSER PERIWINKLE	11
WS	T.B.D.	WESTERIA SINENSIS	CHINESE WESTERIA	11
ZA	T.B.D.	ZANTHORHIZA APIFOLIA	YELLOWROOT	48
-	-	MIXED GROUNDCOVER AND FERNS	-	25

* FINAL PLANT QUANTITIES TO BE DETERMINED IN COORDINATION WITH LANDSCAPE ARCHITECT BASED ON AVAILABILITY OF PLANT SIZES AND RESULTANT PLANT SPACING TO ENSURE PROPER COVERAGE.

NOTE
NUMBERS ON PLAN INDICATE AREA (IN SQUARE FEET) FOR EACH PLANT GROUPING.
SEE SHEET L4 FOR TREE AND SHRUB PLANTINGS

NUMBERS INDICATE AREA, IN SQUARE FEET, OF EACH PLANT GROUPING
NO NUMBER INDICATES SINGLE PLANT





Michael Boucher
No. 1988
216 074
STATE OF MAINE

michael boucher landscape architecture
457 US Route 1
Freemantle, Maine 04088
Tel: 207.865.1808
Fax: 207.865.1855
www.boucherslandscape.com

SCHWARTZ / SILVER ARCHITECTS INC.
75 Kneeland Street
Boston, Massachusetts 02111 Telephone: 617.545.6650
Facsimile: 617.951.0779

PROJECT: MAINE HISTORICAL SOCIETY
489 CONGRESS ST.
PORTLAND, MAINE

DATE: 06/01/07
REVISIONS: 07/20/07
DRAWING TITLE: PERENNIAL & GR. COVER PLANTING PLAN
DRAWING NUMBER: L4.1

60% CD SET
100% CD REVIEW SET
100% CD SET

Drawn By: _____ Date: _____
Reviewed By: _____ Date: _____
Approved By: _____ Date: _____

Scale: 3/8" = 1'