

2 MEZZANINE DEMOLITION PLAN
Scale: 1/8" = 1'-0"

REMOVE WALL SHOWN HATCHED; SEE DEMO ELEV AND STRUCT. PROVIDE SUPPORT FOR EXIST MEZZ. GLASS FLOOR TO REMAIN. G.C. COORD. W/ ARCH. & STRUCT. DWGS.

SALVAGE CAST IRON STAIR, COLUMNS, AND HANDRAILS, AND DELIVER TO OWNER.

REMOVE CAST-IRON FLOOR FRAMING AND GLASS FLOOR PANELS SHOWN HATCHED; SUPPORT EXIST. FRAMING AND FLOOR PLATES TO REMAIN. COORD. W/ STRUCT. FOR EXTENT OF WORK

REMOVE BROKEN GLASS FLOOR PANELS. (5) LOCATIONS AT THIS LEVEL

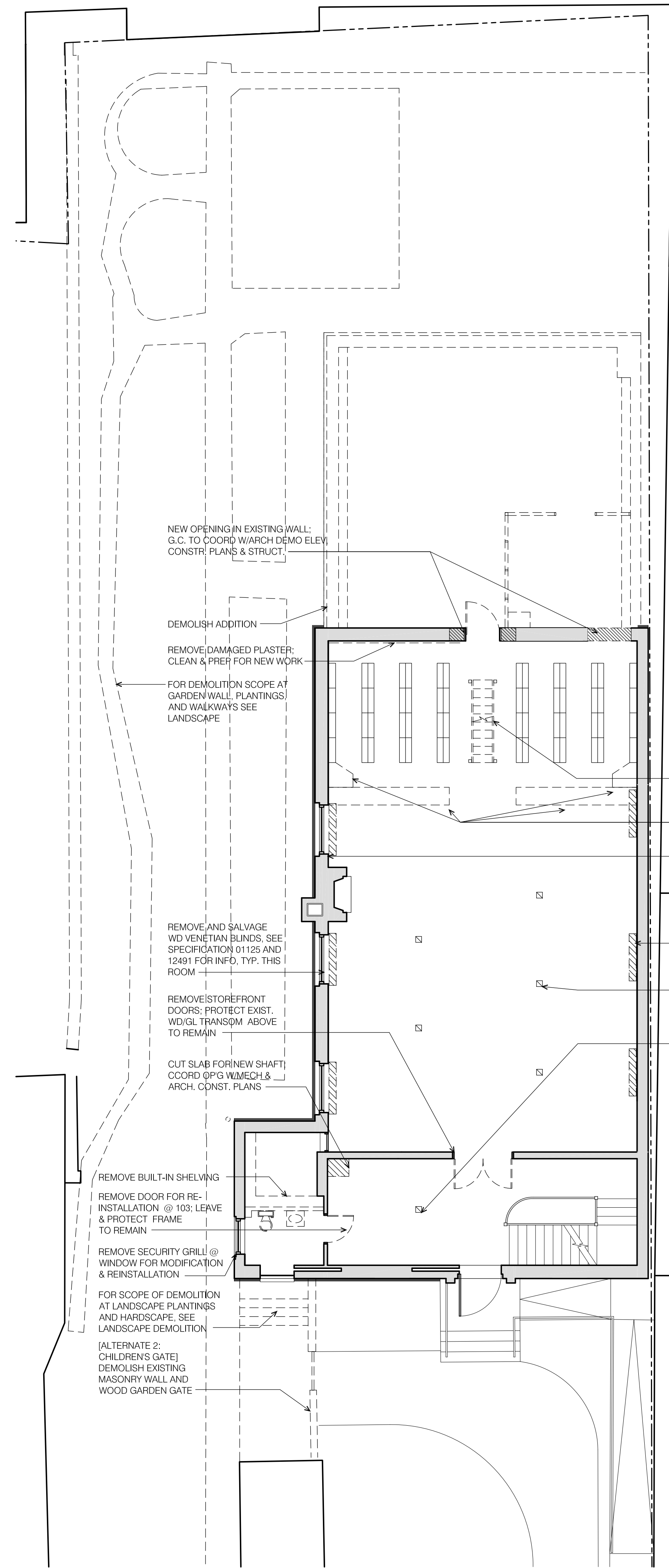
REMOVE LIGHT FIXTURES. (6) THIS ROOM

REMOVE CLG-MTD FANS. (2) THIS ROOM

REMOVE ROOFING & INSULATION; PREP FOR NEW (COPPER GUTTER & DOWNSPOUT TO REMAIN - PROTECT)

NEW OPENING IN EXIST. ROOF/CLG FOR HVAC FAN; COORD W/MECH

REMOVE LIGHT FIXTURES. (2) THIS ROOM



1 FIRST FLOOR DEMOLITION PLAN
Scale: 1/8" = 1'-0"

REMOVE DAMAGED PLASTER; CLEAN & PREP FOR NEW WORK

REMOVE STOREFRONT DOORS; PROTECT EXIST. W/ GL. TRANSP. ABOVE TO REMAIN

REMOVE BUILT-IN SHELVING

REMOVE DOOR FOR RE-INSTALLATION @ 103; LEAVE & PROTECT FRAME TO REMAIN

REMOVE SECURITY GRILL @ WINDOW FOR MODIFICATION & REINSTALLATION

FOR SCOPE OF DEMOLITION AT LANDSCAPE PLANTINGS AND HARDSCAPE; SEE LANDSCAPE DEMOLITION (ALTERNATE 2: CHILDREN'S GATE) DEMOLISH EXISTING MASONRY WALL AND WOOD GARDEN GATE

REMOVE AND SALVAGE WD VENETIAN BLINDS; SEE SPECIFICATION 01125 AND 12491 FOR INFO. TYP. THIS ROOM

REMOVE STOREFRONT DOORS; PROTECT EXIST. W/ GL. TRANSP. ABOVE TO REMAIN

CUT SLAB FOR NEW SHAFT; COORD W/ MECH & ARCH. CONST. PLANS

REMOVE BUILT-IN SHELVING

REMOVE DOOR FOR RE-INSTALLATION @ 103; LEAVE & PROTECT FRAME TO REMAIN

REMOVE SECURITY GRILL @ WINDOW FOR MODIFICATION & REINSTALLATION

FOR SCOPE OF DEMOLITION AT LANDSCAPE PLANTINGS AND HARDSCAPE; SEE LANDSCAPE DEMOLITION (ALTERNATE 2: CHILDREN'S GATE) DEMOLISH EXISTING MASONRY WALL AND WOOD GARDEN GATE

DEMOLISH ADDITION

REMOVE DAMAGED PLASTER; CLEAN & PREP FOR NEW WORK

FOR DEMOLITION SCOPE AT GARDEN WALL, PLANTINGS AND WALKWAYS SEE LANDSCAPE

SALVAGE CAST IRON STAIR, COLUMNS, AND HANDRAILS, AND DELIVER TO OWNER.

REMOVE BUILT-IN WD HALF-HT BOOKCASES, FULL-HT CLOSETS

REMOVE WD VENETIAN BLINDS & REFURBISH; (3) THIS ROOM

CUT SLAB FOR NEW DUCTS; COORD W/ MECH. (6) THIS ROOM

CORE FLOOR FOR NEW FLOOR BOXES; COORD W/ ELEC. AND SEE ARCH. CONST. PLANS (5) THIS ROOM

CORE FLOOR FOR NEW FLOOR BOX; COORD W/ ELEC. AND SEE ARCH. CONST. PLANS (1) THIS ROOM

DEMOLITION PLAN NOTES

1. EXISTING INTERIOR CONSTRUCTION INDICATED TO REMAIN SHALL BE PROTECTED, AND INCLUDES, BUT IS NOT LIMITED TO, THE FOLLOWING, AND AS INDICATED IN DRAWINGS AND SCHEDULES:

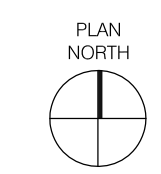
- MOSAIC AND TILE FLOORS
- BRICK FIREPLACES
- GLASS FLOOR PANELS
- METAL BOOKSTACKS, FRAMING AND RAILING SYSTEMS
- CLEAR-FINISHED WOOD DOORS, FRAMES AND TRIM
- DECORATIVE TREATMENTS
- PLASTER WALLS, CEILINGS AND TRIM

2. DEMOLITION AT EXISTING OPENINGS: REFER TO SPECIFICATION SECTION 08101 FOR DEMOLITION OF DOOR, FRAMES OR HARDWARE AT EXISTING OPENINGS INDICATED TO REMAIN.

3. REFER TO ARCHITECTURAL PLAN DRAWING NOTES FOR PATCHING WORK TO BE PERFORMED AT LOCATIONS OF DEMOLISHED ITEMS AT INTERIOR SURFACES.

4. REFER TO DIVISION 1 SPECIFICATION SECTION "SELECTIVE DEMOLITION" FOR SCOPE OF DEMOLITION WORK FOR GENERAL CONTRACTOR AND FILED SUB-BID SUBCONTRACTORS.

5. REFER TO MECHANICAL AND ELECTRICAL DRAWINGS FOR MECHANICAL AND ELECTRICAL DEMOLITION WORK AT EXISTING BUILDING INDICATED TO REMAIN.



CONSULTANTS

SCHWARTZ / SILVER ARCHITECTS INC.
75 Kneeland Street Boston, Massachusetts 02111 Telephone 617/542-6650 Facsimile 617/951-0779

PROJECT

MAINE HISTORICAL SOCIETY
489 CONGRESS ST. PORTLAND, MAINE

DATE	REVISIONS	DATE	REVISIONS
09/13/07	REVISION 01		

DRAWING TITLE

FIRST FLOOR / MEZZANINE DEMOLITION PLANS

DRAWING NUMBER

D1.02

Scale: 1/8" = 1'-0"