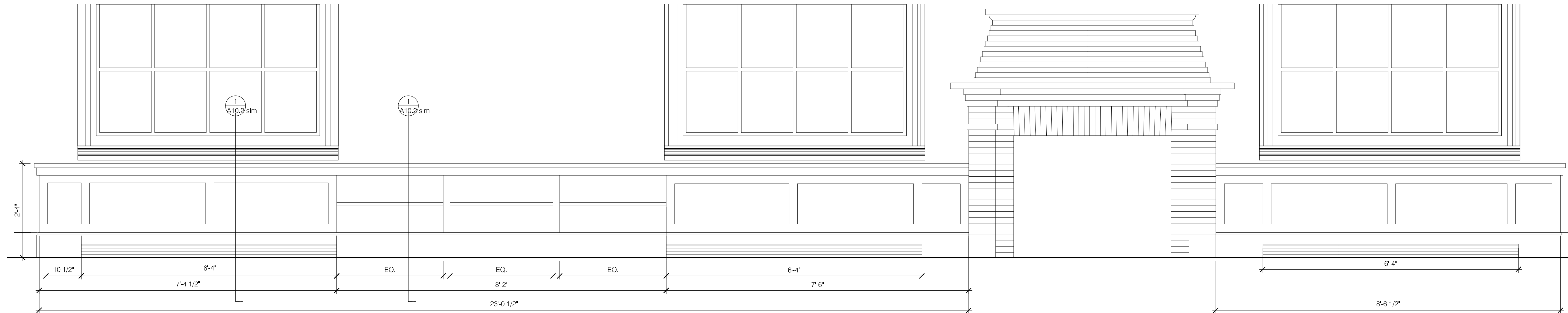
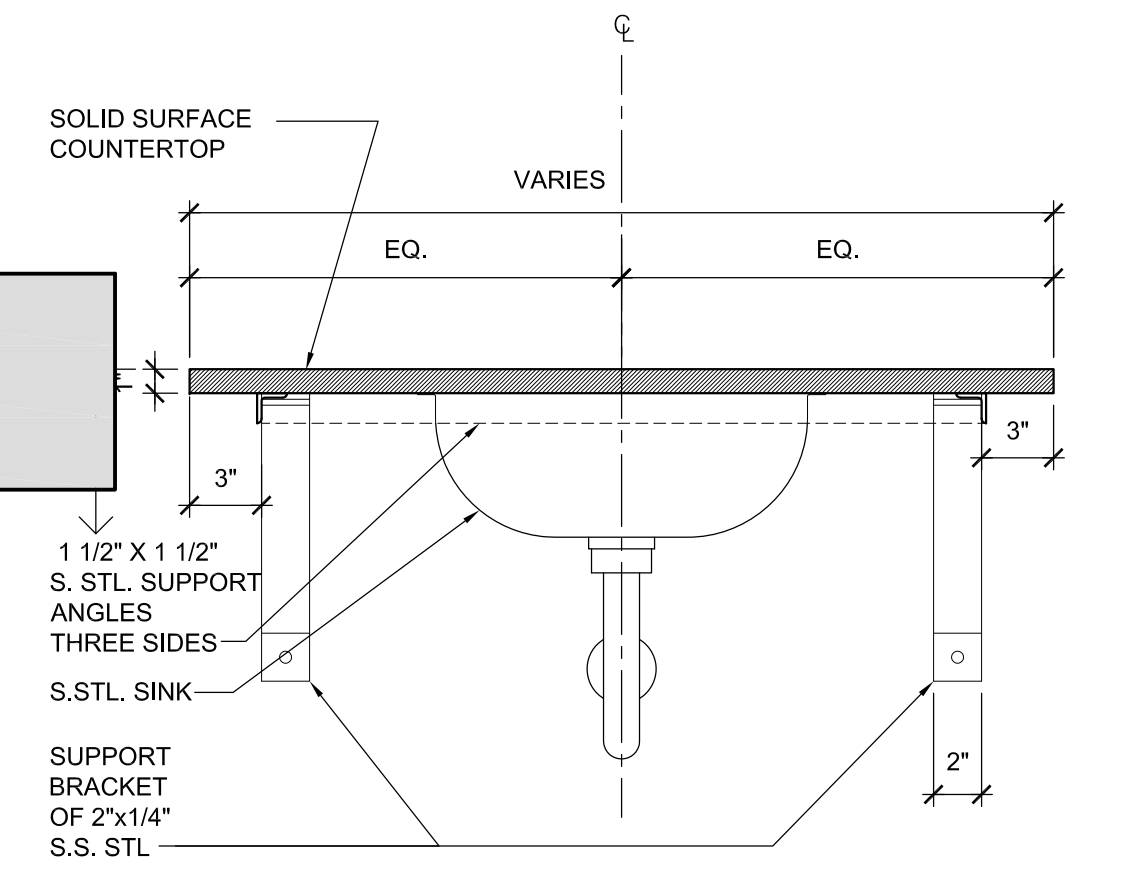


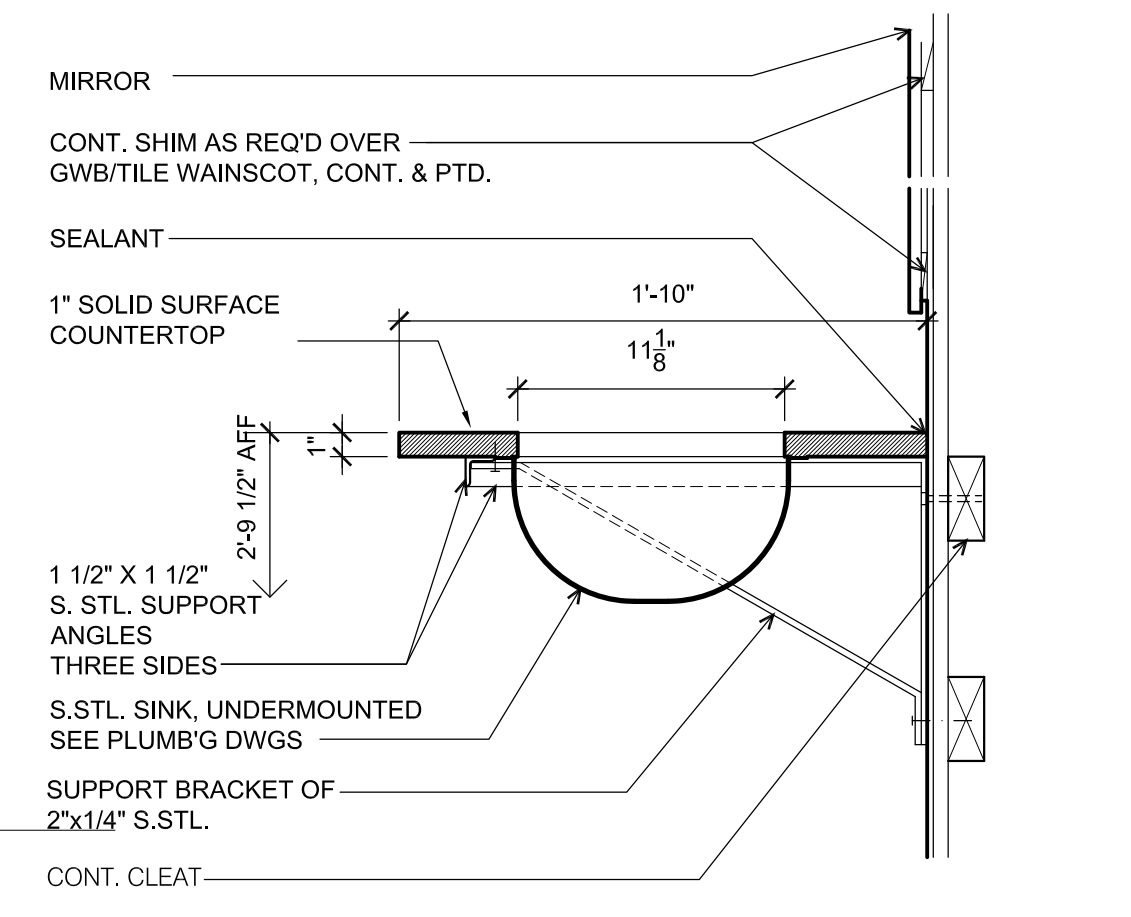
16 PLAN @ READING ROOM - WEST
Scale: 3/4" = 1'-0"



15 ELEVATION @ READING ROOM - WEST
Scale: 3/4" = 1'-0"

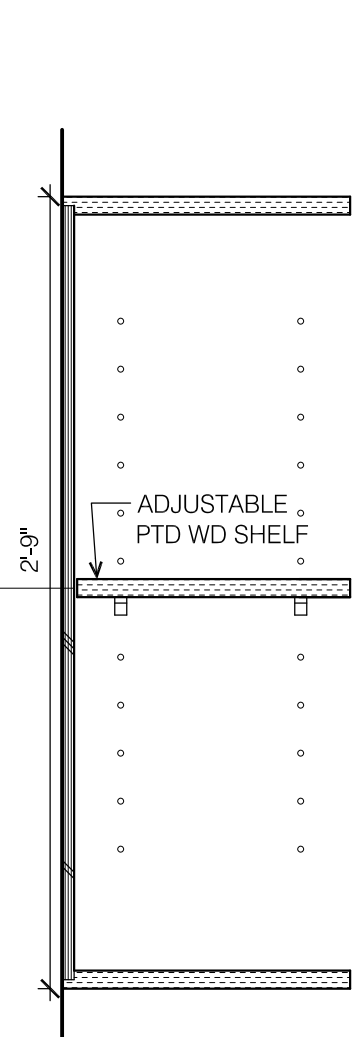


12 ELEVATION - BATHRM. SINK
Scale: 1 1/2" = 1'-0"

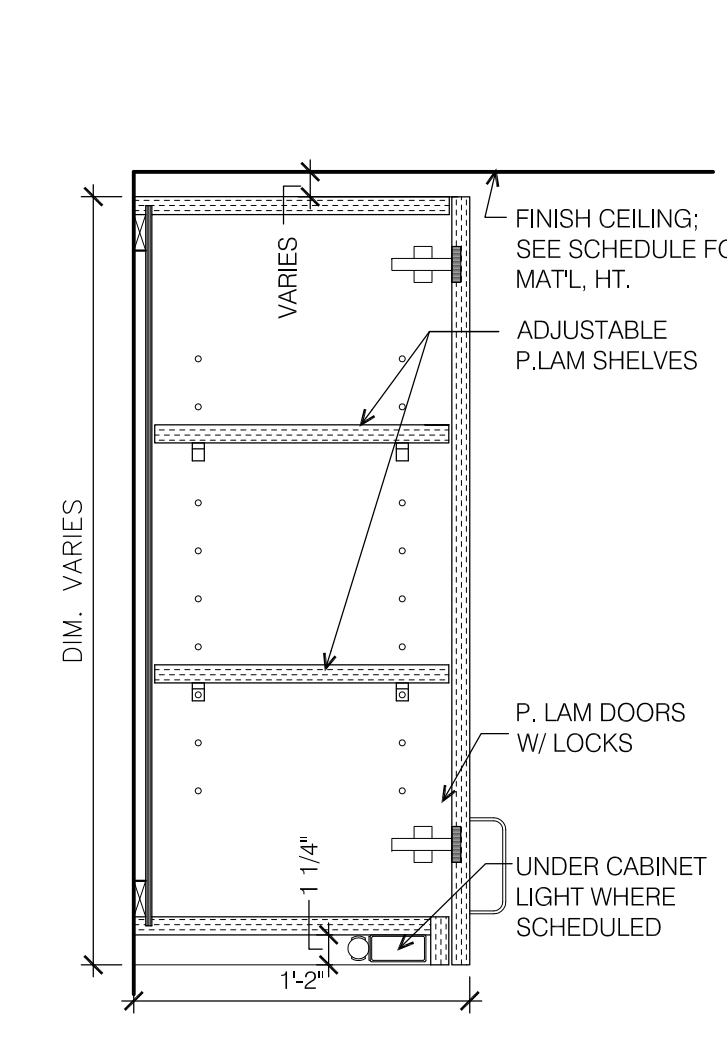


11 SECTION DETAIL - BATHRM. SINK
Scale: 1 1/2" = 1'-0"

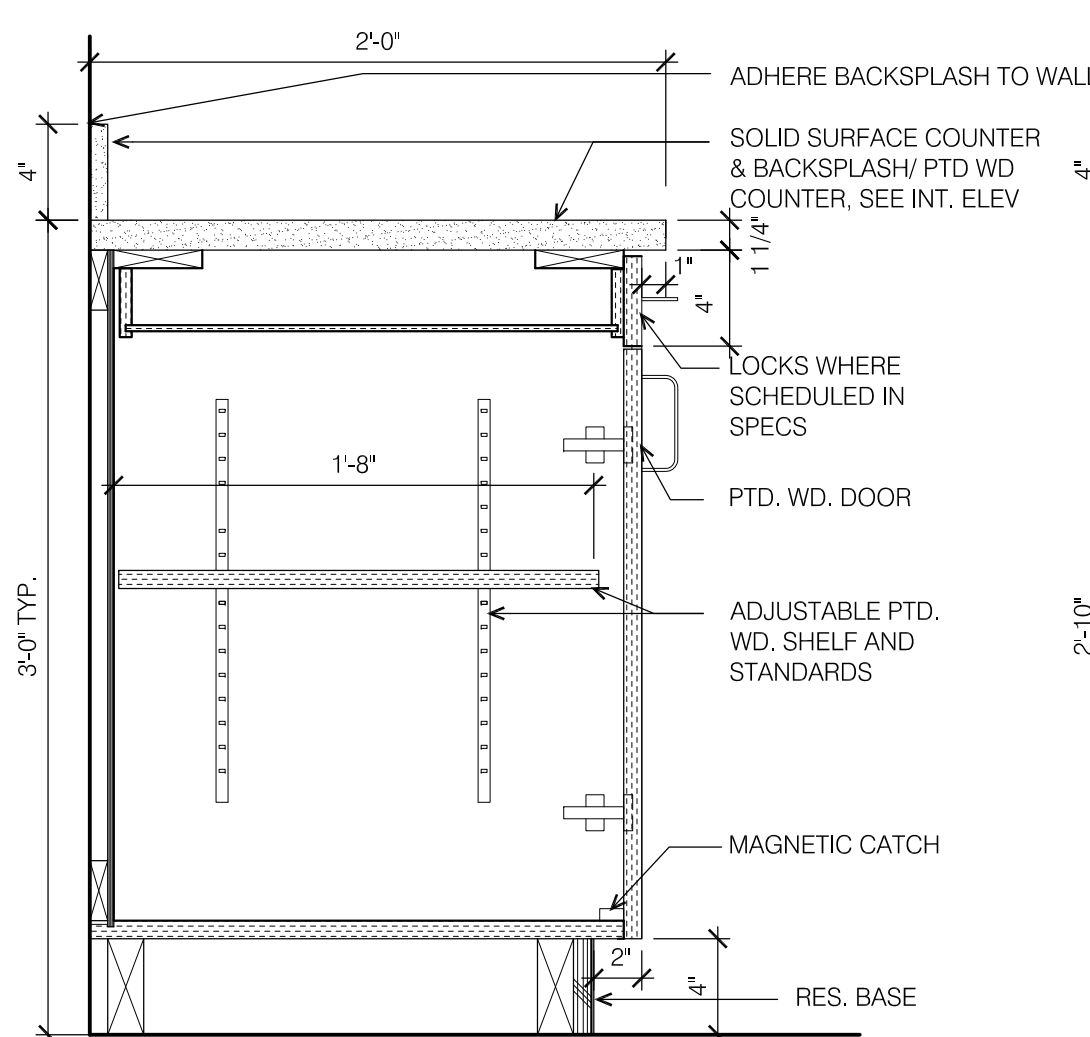
10 NOT USED
Scale: 1 1/2" = 1'-0"



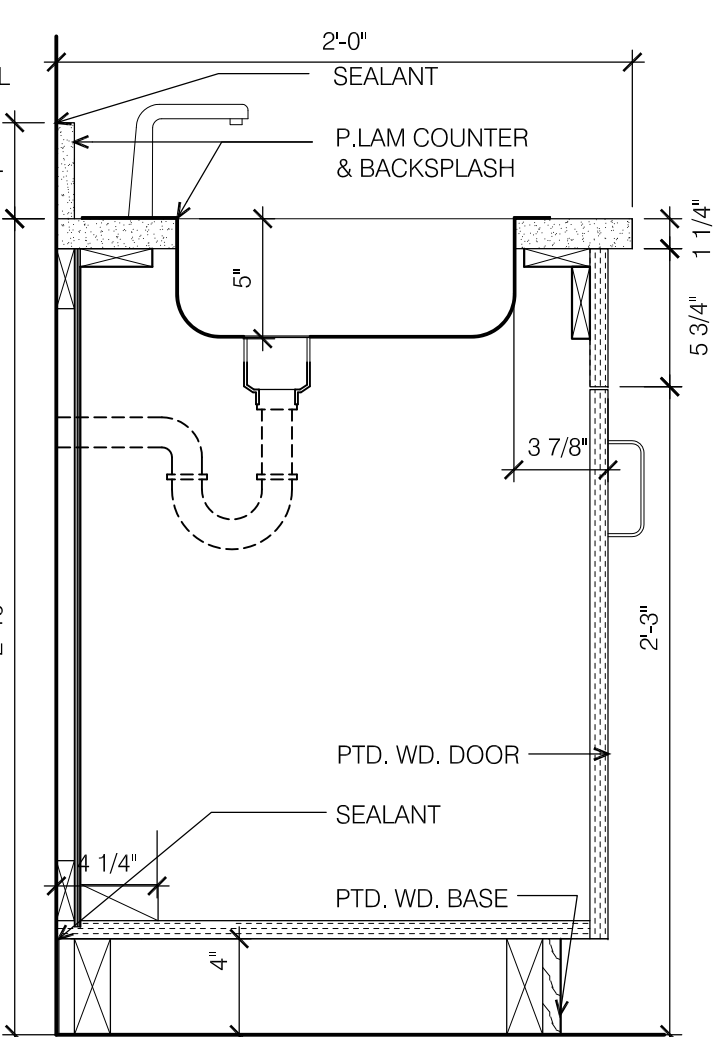
8 UPPER SHELVES
Scale: 1 1/2" = 1'-0"



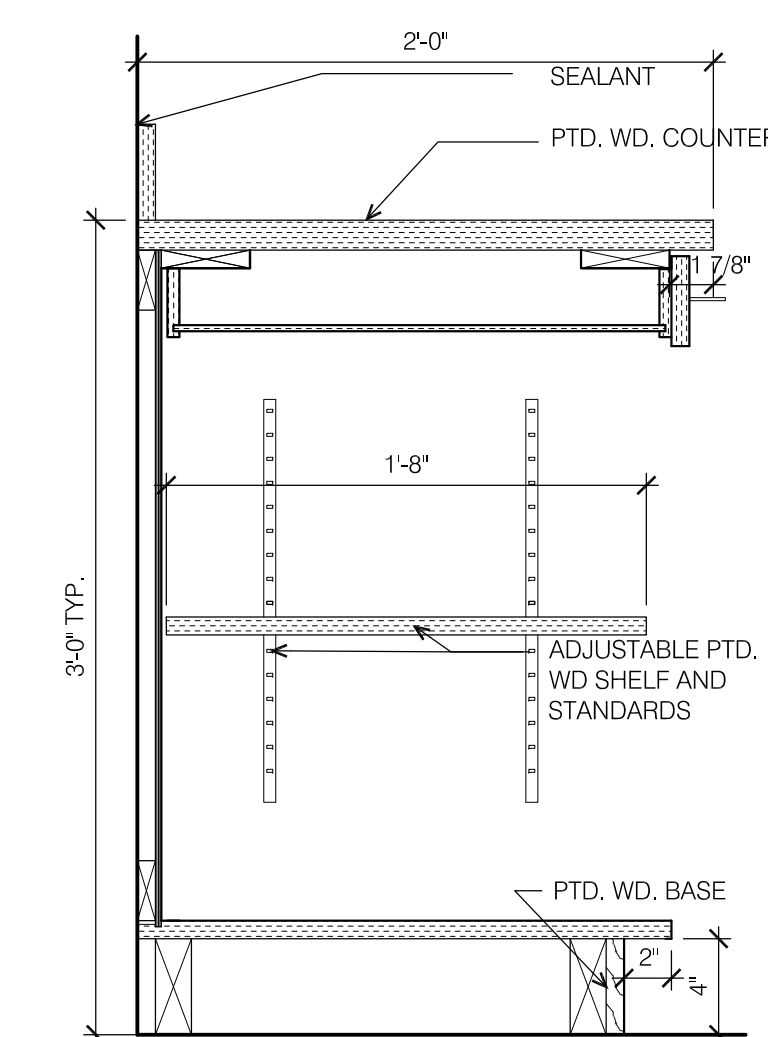
7 UPPER CABINET
Scale: 1 1/2" = 1'-0"



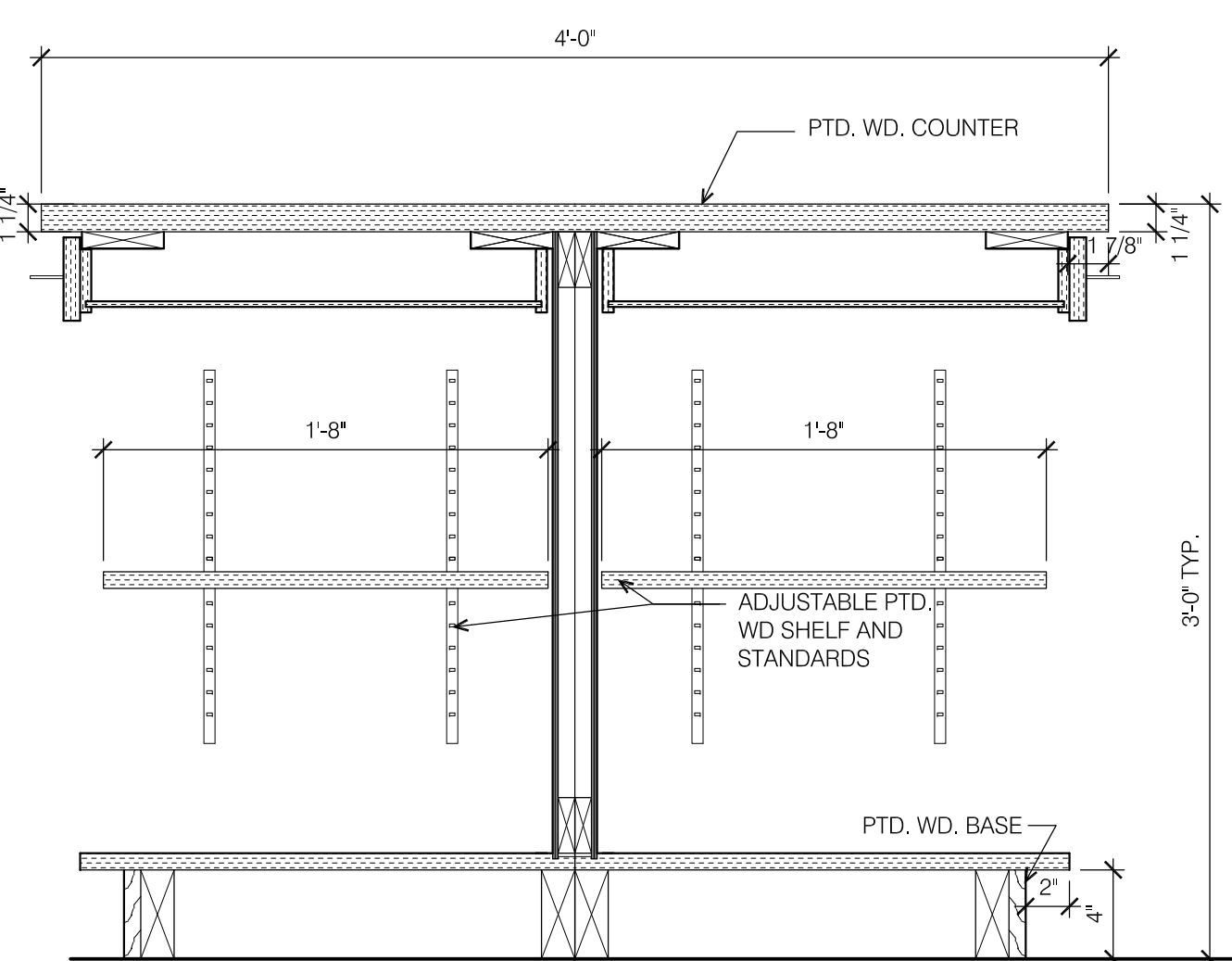
6 BASE CABINET
Scale: 1 1/2" = 1'-0"



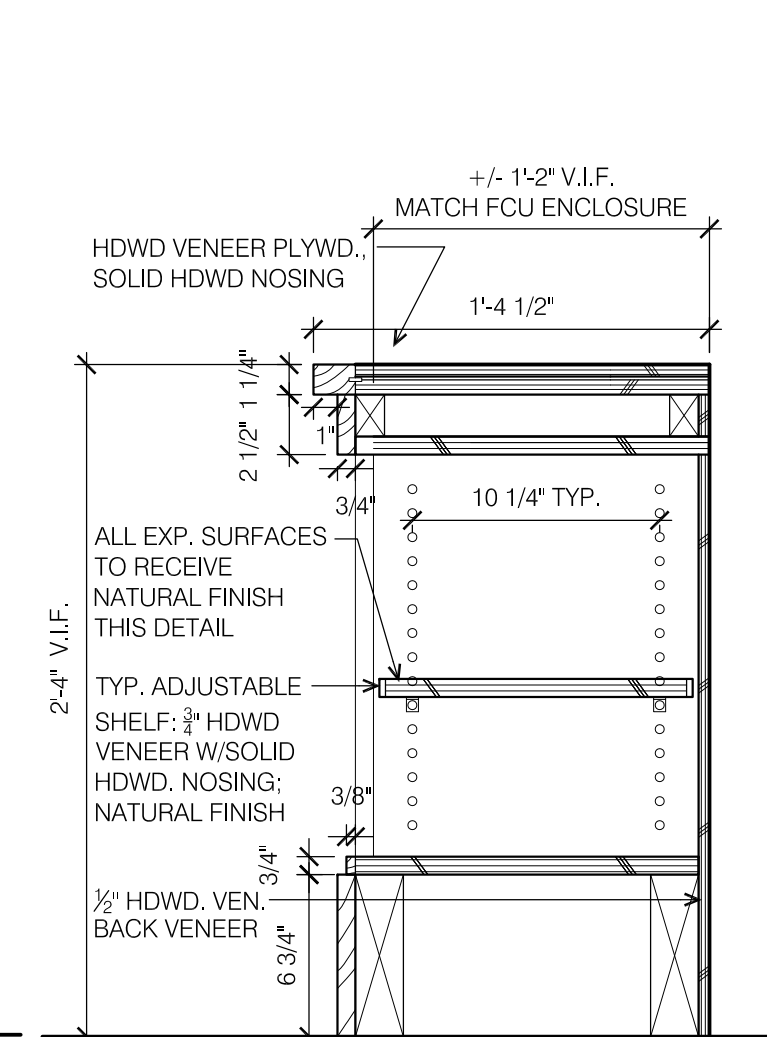
5 BASE CABINET W/ SINK
Scale: 1 1/2" = 1'-0"



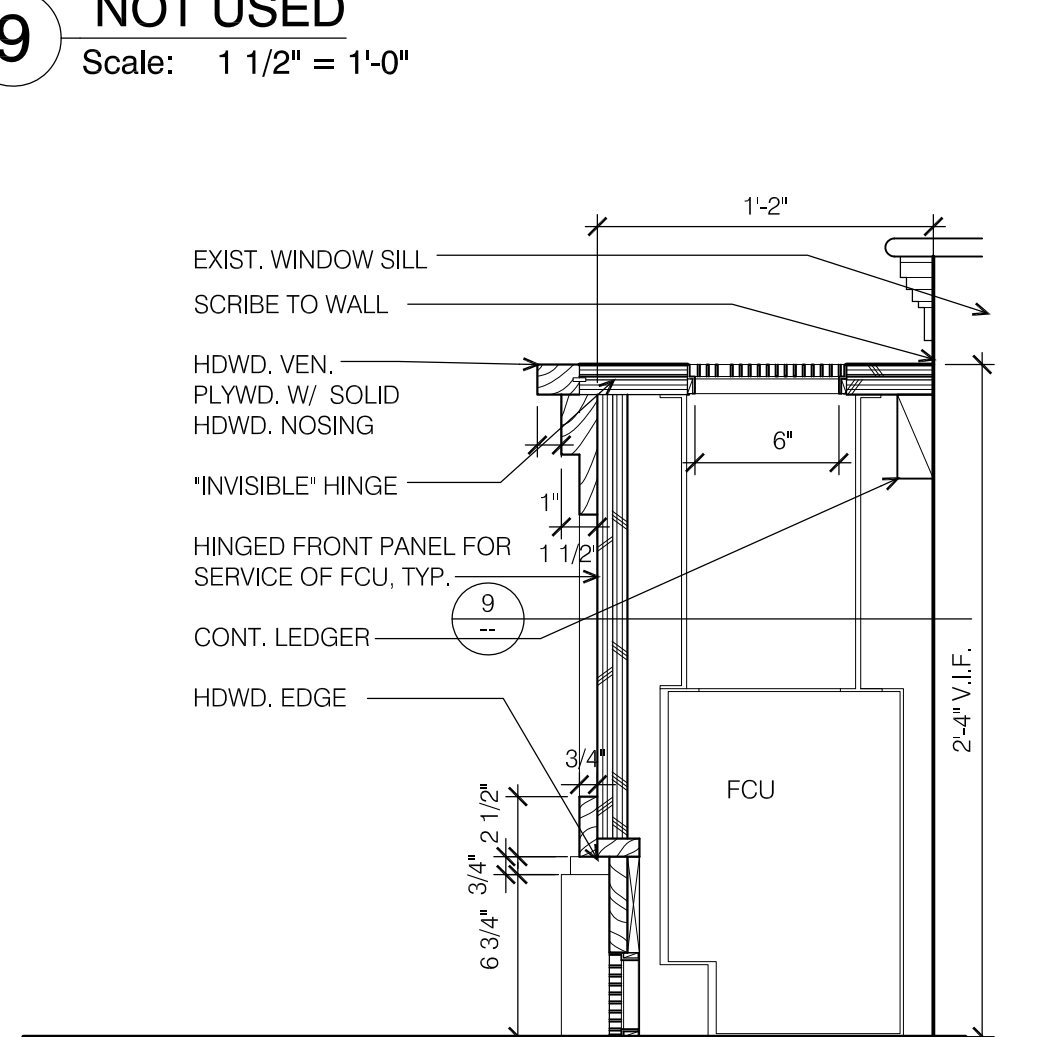
4 LOWER SHELVES
Scale: 1 1/2" = 1'-0"



3 LOWER SHELVES
Scale: 1 1/2" = 1'-0"



2 NEW BOOKCASE
Scale: 1 1/2" = 1'-0"



1 SECTION @ FCU
Scale: 1 1/2" = 1'-0"

DRAWING NUMBER: A10.03 | DRAWING TITLE: CASEWORK DETAILS | PROJECT: MAINE HISTORICAL SOCIETY | CONSULTANTS: SCHWARTZ / SILVER ARCHITECTS INC.

MAINE HISTORICAL SOCIETY
489 CONGRESS ST.
PORTLAND, MAINE

SCHWARTZ / SILVER
ARCHITECTS INC.
75 Kneeland Street
Boston, Massachusetts 02111
Telephone 617-542-6650
Facsimile 617-951-0779

| DATE | REVISIONS | Drawn By | Date | Reviewed By | Date | Approved By | Date |
|----------|-------------|----------|------|-------------|------|-------------|------|
| 09/13/07 | REVISION 01 | | | | | | |
| | | | | | | | |
| | | | | | | | |
| | | | | | | | |

AS NOTED
Scale

A10.03