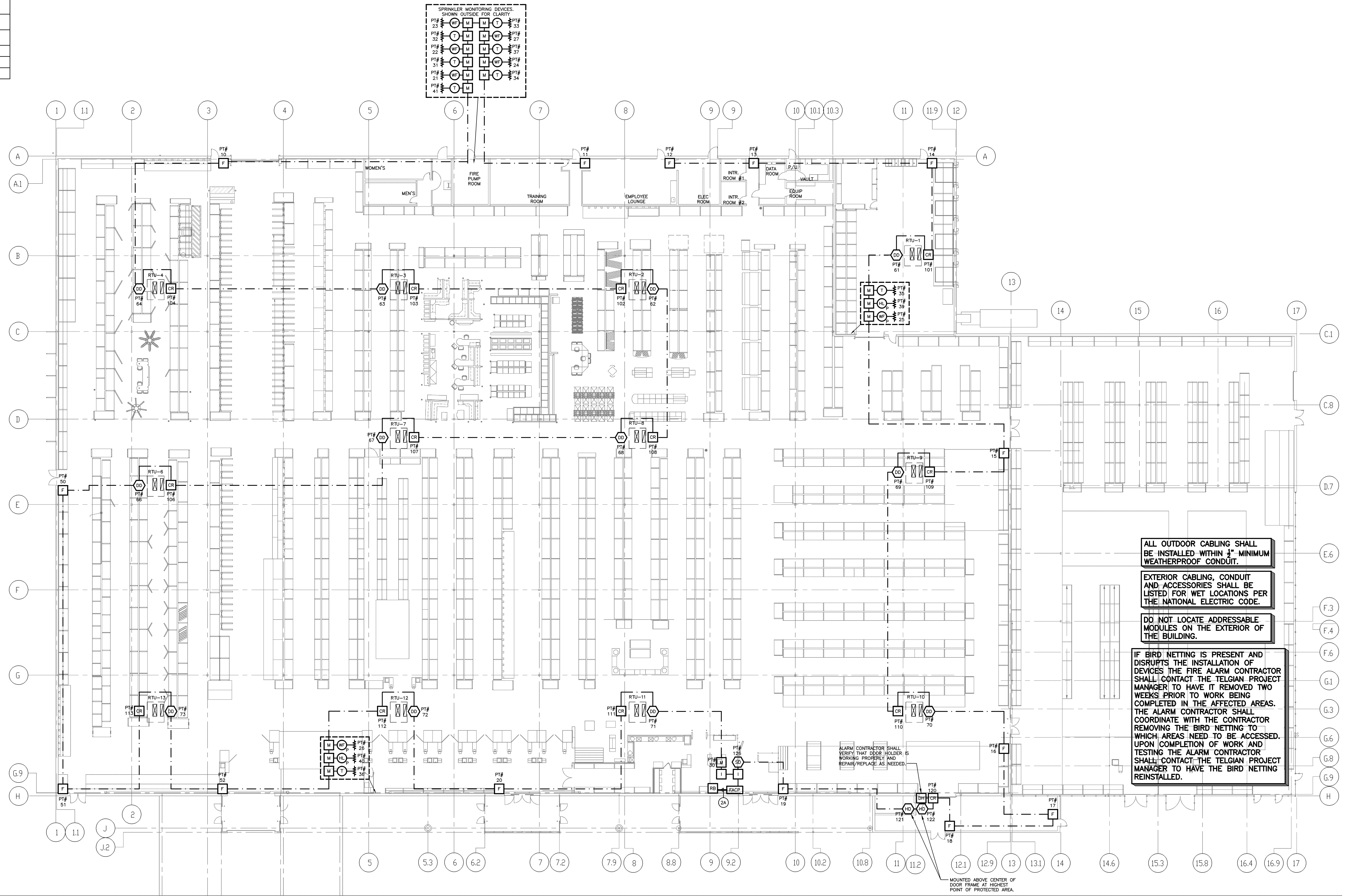


FIRE ALARM SYMBOLS LEGEND			
SYMBOL	QUANTITY	DESCRIPTION	MAKE/MODEL
[FACP]	1	FIRE ALARM CONTROL PANEL	SILENT KNIGHT 5806 / ALTRONIX AL300LXR / DRAWING CABINET
[PS-x]	6	N.A.C. POWER SUPPLIES / SD2000-MM MONITOR MODULES (Q = QUANTITY OF N.A.C. POWER SUPPLIES AND MONITOR MODULES)	SILENT KNIGHT 5499 / SILENT KNIGHT SD2000-MM
[J]	1	JUNCTION/WIRE SPLICE BOX	4"x4"x2 1/8" JUNCTION BOX WITH COVER, CLEARLY LABELED AS FIRE ALARM
[I]	2	FIRE ALARM ISOLATOR MODULE	SILENT KNIGHT SD600-LM; PROVIDE 4"x4"x2 1/8" BACK BOX
[SD]	1	PHOTOELECTRIC SMOKE DETECTOR	SILENT KNIGHT SD605-APS; PROVIDE OCTAGON BACK BOX AND SD605-6AB BASE
[HD]	2	HEAT DETECTOR	SILENT KNIGHT SD605-AHS; PROVIDE OCTAGON BACK BOX AND SD605-6AB BASE
[SDS]	12	DUCT SMOKE DETECTOR (INSTALLED ON SUPPLY SIDE)	SILENT KNIGHT SD605-DUCT; SMOKE HEAD INCLUDED, MUST INCLUDE SAMPLING TUBE
[M]	14	MANUAL PULL STATION (SINGLE ACTION)	SILENT KNIGHT SD600-PS; PROVIDE 4"x4"x2 1/8" BACK BOX WITH SINGLE GANG MUD RING
[M]	18	MONITOR MODULE	SILENT KNIGHT SD600-AM; PROVIDE 4"x4"x2 1/8" BACK BOX
[CR]	13	CONTROL RELAY	SILENT KNIGHT SD600-ARM; PROVIDE 4"x4"x2 1/8" BACK BOX
[RB]	1	MASTER RADIO BOX	
[DH]	1	DOOR HOLDER (24VAC)	ALARM CONTRACTOR SHALL VERIFY THAT DOOR HOLDER IS WORKING PROPERLY AND REPAIR/REPLACE AS NEEDED
[57]	57	CEILING MOUNTED MULTI-CANDELA STROBE LIGHT	SYSTEM SENSOR SCR 1150d UNLESS OTHERWISE NOTED; PROVIDE 4"x4"x2 1/8" BACK BOX
[53]	53	CEILING MOUNTED MULTI-CANDELA HORNSTROBE	SYSTEM SENSOR PCR 1150d UNLESS OTHERWISE NOTED; PROVIDE 4"x4"x2 1/8" BACK BOX
[57WP]	7	CEILING MOUNTED MULTI-CANDELA WEATHERPROOF STROBE LIGHT	SYSTEM SENSOR SCR 1150d UNLESS OTHERWISE NOTED; UTILIZE PROVIDED WEATHERPROOF BACK BOX (SA-WBRC)
[53WP]	7	CEILING MOUNTED MULTI-CANDELA WEATHERPROOF HORNSTROBE	SYSTEM SENSOR PCR 1150d UNLESS OTHERWISE NOTED; UTILIZE PROVIDED WEATHERPROOF BACK BOX (SA-WBRC)
[YWP]	1	WALL MOUNTED MULTI-CANDELA WEATHERPROOF HORNSTROBE	SYSTEM SENSOR PWR 75d UNLESS OTHERWISE NOTED; UTILIZE PROVIDED WEATHERPROOF BACK BOX (SA-WBB)
[SW]	8	SPRINKLER SYSTEM CONTROL VALVE SUPERVISORY TAMPER SWITCH	EXISTING TO REMAIN
[W]	5	WATERFLOW SWITCH	EXISTING TO REMAIN
[WAP]	2	WATERFLOW ALARM PRESSURE SWITCH	EXISTING TO REMAIN
[HAP]	2	HIGH/LOW AIR PRESSURE SUPERVISORY SWITCH	EXISTING TO REMAIN
[SP]	2	SURGE PROTECTOR	DITEK DTK-2LVLP-DPK; PROVIDE 4"x4"x2 1/8" BACK BOX; PROVIDE EXTENSION RING IF NECESSARY
[*]		*P INDICATES CIRCUIT NUMBER	
[—]		END OF LINE RESISTOR	
[—]		INDICATES WIRE QUANTITIES	
WIRE LEGEND			
A	---	COMMUNICATION CIRCUIT FOR SLD 16 AWG P/PLP/PL ONE PAIR	
B	---	DOOR HOLDER RELEASE 14 AWG P/PLP/PL ONE PAIR	
C	---	NOTIFICATION CIRCUIT 14 AWG P/PLP/PL ONE PAIR	
E	---	NOTIFICATION CIRCUIT 14 AWG THWN ONE PAIR	
	---	MULTIPLE CABLES	
		RED PLENUM RATED (P/PL/P) WIRE TO BE UTILIZED	
		WP = WEATHERPROOF CABLE SHALL BE PROVIDED AS REQUIRED	
		(+) POSITIVE CIRCUIT POLARITY (-) NEGATIVE CIRCUIT POLARITY	

SCOPE OF WORK
 THIS IS AN EXISTING STORE THAT IS OPEN FOR BUSINESS.
 THE EXISTING FIRE ALARM SYSTEM WILL BE REPLACED WITH NEW TO ENSURE RELIABLE PERFORMANCE.



ALL OUTDOOR CABLING SHALL BE INSTALLED WITHIN 1" MINIMUM WEATHERPROOF CONDUIT.
 EXTERIOR CABLING, CONDUIT AND ACCESSORIES SHALL BE LISTED FOR WET LOCATIONS PER THE NATIONAL ELECTRIC CODE.
 DO NOT LOCATE ADDRESSABLE MODULES ON THE EXTERIOR OF THE BUILDING.
 IF BIRD NETTING IS PRESENT AND DISRUPTS THE INSTALLATION OF DEVICES THE FIRE ALARM CONTRACTOR SHALL CONTACT THE TELGIAN PROJECT MANAGER TO HAVE IT REMOVED TWO WEEKS PRIOR TO WORK BEING COMPLETED IN THE AFFECTED AREAS. THE ALARM CONTRACTOR SHALL COORDINATE WITH THE CONTRACTOR REMOVING THE BIRD NETTING TO WHICH AREAS NEED TO BE ACCESSED. UPON COMPLETION OF WORK AND TESTING THE ALARM CONTRACTOR SHALL CONTACT THE TELGIAN PROJECT MANAGER TO HAVE THE BIRD NETTING REINSTALLED.

FIRE ALARM INITIATING DEVICE LAYOUT
 SCALE: 1"=20'



CONSULTANT:
Ray Dotis
 DESIGNER:
Bill Cummings
 QUALITY CONTROL:
Brian Scudder

THE HOME DEPOT
 Portland, ME



STORE#2401
 THE HOME DEPOT
 245 Riverside St.
 Portland, ME

NICET LEVEL IV
 BRIAN SCUDDER, SET
 FIRE ALARM SYSTEMS
 CERTIFICATION NUMBER
 96297
 DATE

- REVISIONS
- △
 - △
 - △
 - △
 - △

DESIGN COMPLETE:
05/16/11

HOME DEPOT
 REPLACEMENT PROGRAM
FA1.0
 FIRE ALARM INITIATING DEVICE LAYOUT