

CONTINUOUS RIDGE VENT
 235 LB ASPHALT SHINGLES
 GRACE TRI-FLEX 30 ROOFING PAPER
 5/8" APA KATED SHEATHING
 2 COURSES BITUMTHANE ICE AND WATER SHIELD
 ALUMINUM DRIFEDGE
 1/4" PINE SHADOW BOARD
 1/2" PINE FASCIA
 (NOTE: PINE TRIM TO BE ALUMINUM WRAPPED)

CONTINUOUS 2x8 BLOCKING SOB-FASCIA
 PERFORATED VINYL SOFFIT
 2x8 FT PLATE - SEE STRUCTURAL DRAWINGS
 TRUSSES (CHECK DESIGN BY TRUSS MANUFACTURER)
 1/2" STRAPPING
 3/4" FT PLYWOOD
 12" FIBERGLASS BATT INSULATION

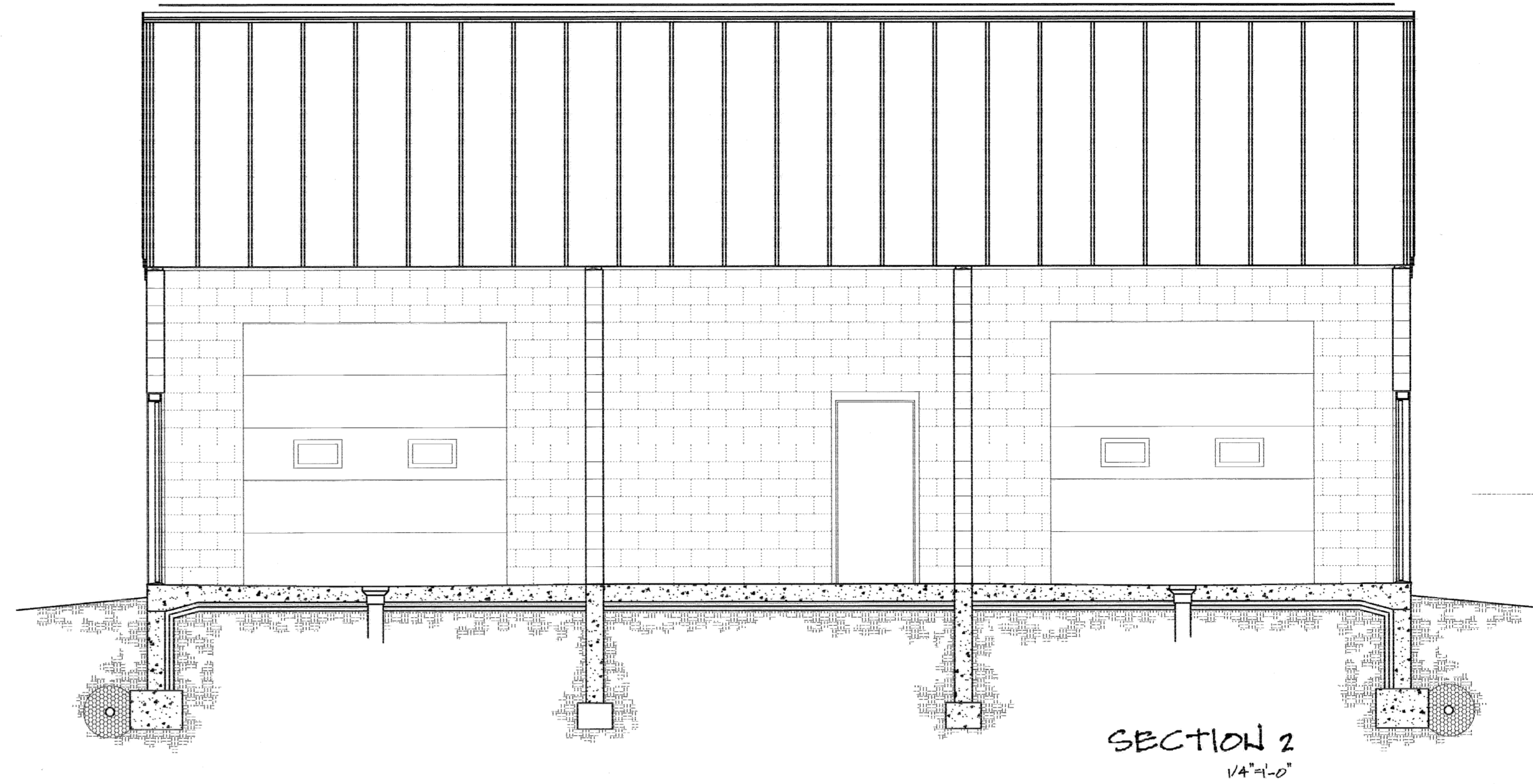
SEE STRUCTURAL DRAWINGS
 FOR CMU / HEADER / BLOCK
 REQUIREMENTS

12'-0" SLAB - TOP OF C.M.U.

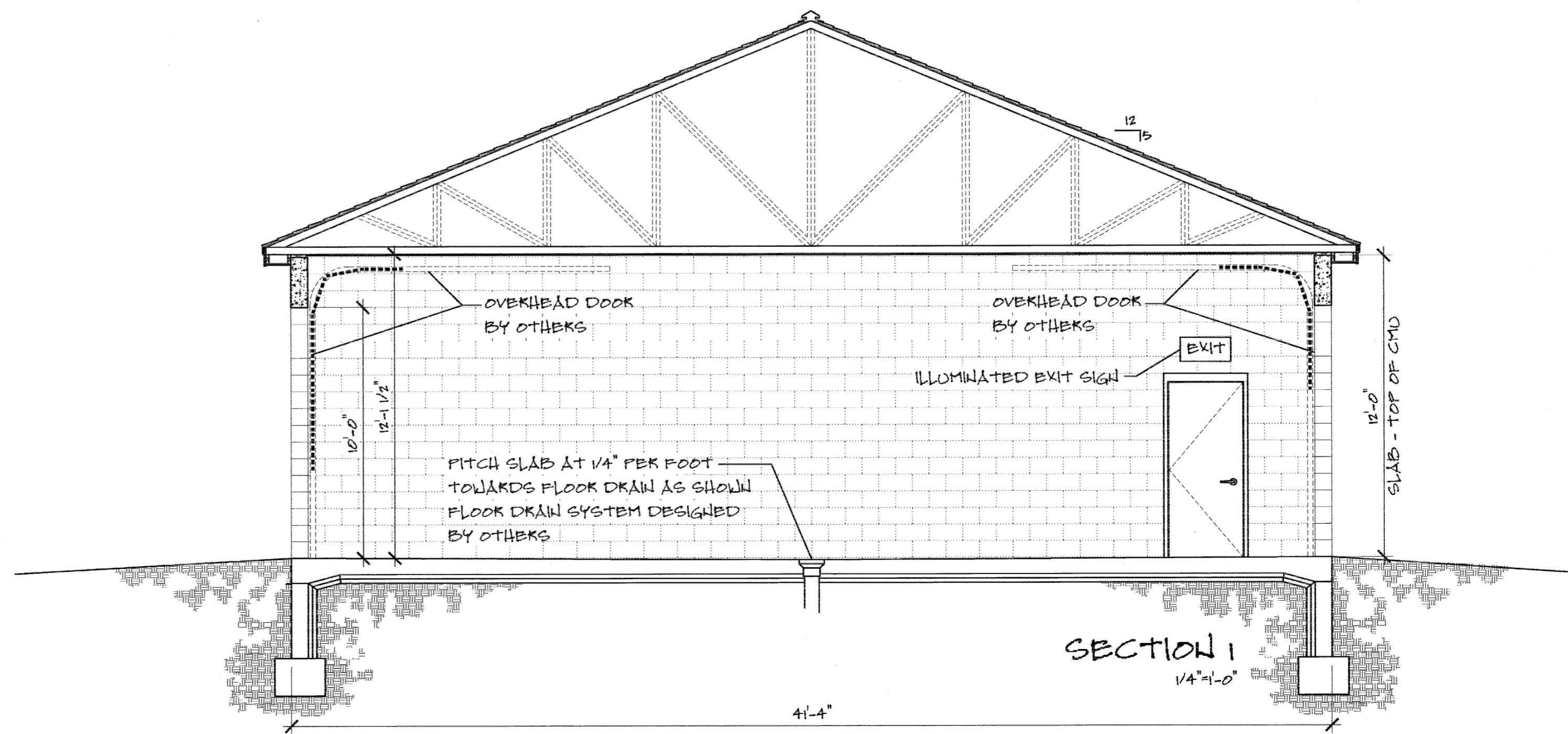
SEE SHEETS A4 AND A5 FOR
 SLAB / CMU AND FOUNDATION
 DETAILS (TYP)

1 LAYER - 2" POLYISOCYANURATE
 RIGID INSULATION (TYP)

SLOPE SLAB @ 1/4" PER FOOT
 TOWARDS DRAIN (TYP AT 2 BAYS)
 SEE SHEET A1



SECTION 2
 1/4"=1'-0"



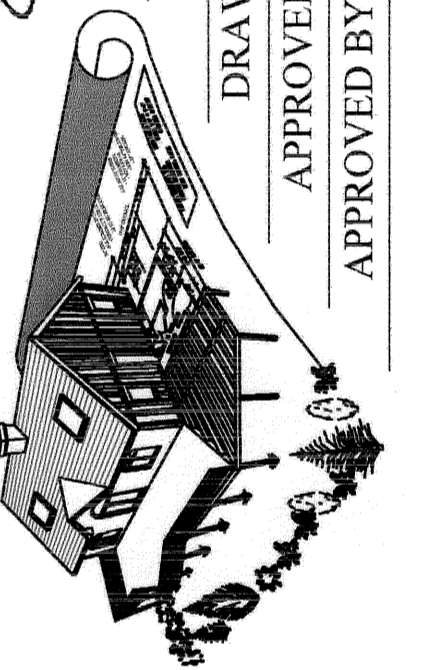
SECTION 1
 1/4"=1'-0"

NOTE: FOUNDATION DRAINS REMOVED
 AT OWNER REQUEST.

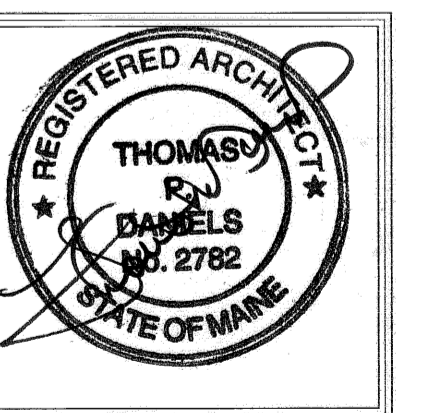
CUSTOM CONCEPTS, INC.
 684 U.S. ROUTE 1, BOX 2 - SCARBOROUGH, MAINE 04074
 TEL: (207) 888-0088 FAX: (207) 888-0081

JOB NUMBER: *****
 SCALE: 1/4" = 1'-0" O.A.D.
 UPDATED: 22 MARCH '06
 DRAWN BY: TFD

JOB: THE CAR WASH AT WAKRELL AVENUE
 DRAWING: SECTIONS
 APPROVED BY: _____
 APPROVED BY: _____



- PRELIMINARY DESIGN (FOR CLIENT REVIEW)
- DESIGN DEVELOPMENT (FOR CLIENT REVIEW AND COST ESTIMATING)
- CONTRACT DOCUMENTS (FOR PERMITS, BIDS, AND CONSTRUCTION)



A3