

NOTE:
CONSULT SANDWICH STATION POWER SCHEDULE THIS SHEET
FOR ADDITIONAL ELECTRICAL REQUIREMENTS. ASSIGN CIRCUITS
AS REQ'D

NOTE:
ELECTRIC PANELBOARDS AS SHOWN ARE DIAGRAMMATIC.
OWNER'S G.C. IS RESPONSIBLE FOR SIZING FINAL SERVICE LOAD
BASED ON LOADS OF EQUIPMENT AS SHOWN.

CONVENIENCE POWER NOTE

NOTE:
CONVENIENCE POWER IS PROVIDED ON THIS PLAN.
LOCATIONS FOR CONVENIENCE POWER TO BE REVIEWED W/
FRANCHISEE. TYPICAL LOCATIONS FOR ADDITIONAL OUTLETS:
FRONT AND BACK LINE COUNTERS, OFFICE, ABOVE CEILING IN
SALES AREA AND VESTIBULE, ROOF FOR HOLIDAY LIGHTING.

RECEPTACLES TAGGED WITH "USB" IN THE SALES & SEATING AREAS SHALL BE
HUBBELL #USB15X21 (IVORY) / NP261 (IVORY) COMBO USB CHARGER WITH
TAMPER-RESISTANT RECEPTACLE.

SEATING AREA RECEPTACLES SHALL BE IVORY WITH IVORY COVER PLATE AND
ARE TO BE MOUNTED AT 3'-2-1/2" AFF.

MAIN DISTRIBUTION PANELBOARD

VOLTAGE: 120/208 PHASE: 3 LOCATION: SEE PLAN
BUS AMPS: 600 WIRE: 4 MOUNTING: SURFACE
MAIN OVERCURRENT DEVICE: REMARKS: EXISTING
CIRCUIT #M-1

CKT	DESCRIPTION	BREAKER AMP	POLE	LOAD KVA	PHASE	CKT	DESCRIPTION	BREAKER AMP	POLE	LOAD KVA	PHASE
1	PANEL "A"	X	3	13.88	A	2	PANEL "B"	100	3	20.75	A
3				13.70	B	4				18.30	B
5				14.48	C	6				16.67	C
7	HVAC UNIT #1	45	3	3.77	A	8	HVAC UNIT #2	40	3	3.36	A
9	EXISTING V.I.F.			3.77	B	10	EXISTING V.I.F.			3.36	B
11				3.77	C	12				3.36	C
13	TURBOCHEF	30	2	1.75	A	14	TOASTER	20	2	1.6	A
15				1.75	B	16				1.6	B
17	TURBOCHEF	30	2	1.75	C	18	SPARE				
19				1.75	A	20	SPARE				
21	SPARE				B	22	HVAC UNIT #3	40	3	3.36	B
23					C	24	EXISTING V.I.F.			3.36	C
25					A	26				3.36	A
27	OVEN CONTROL	20	1	.5	B	28	SPARE				
29	OVEN EXHAUST FAN	20	1	.6	C	30					
31	SPARE				A	32	ICE MACHINE	20	2	1.4	A
33					B	34	EXISTING			1.4	B
35	WALK-IN FREEZER	20	2	4.2	C	36	SPARE				
37	EXISTING			4.2	A	38					
39	WALK-IN COOLER	20	2	1.32	B	40	SPARE				
41	EXISTING			1.32	C	42					

PHASE A LOAD (KVA): 55.82
PHASE B LOAD (KVA): 49.06
PHASE C LOAD (KVA): 49.51
TOTAL LOAD (KVA): 154.39

PANELBOARD "A"

VOLTAGE: 120/208 PHASE: 3 LOCATION: SEE PLAN
BUS AMPS: 100 WIRE: 4 MOUNTING: SURFACE
MAIN OVERCURRENT DEVICE: REMARKS: EXISTING
CIRCUIT #M-1

CKT	DESCRIPTION	BREAKER AMP	POLE	LOAD KVA	PHASE	CKT	DESCRIPTION	BREAKER AMP	POLE	LOAD KVA	PHASE
1	LIGHTING * P/S	20	1	1.5	A	2	CASH REGISTER *** SS	15	1	.2	A
3	LIGHTING * P/S	20	1	1.5	B	4	CASH REGISTER *** SS	15	1	.2	B
5	LIGHTING * P/S	20	1	1.5	C	6	CASH REGISTER *** SS	15	1	.2	C
7	LIGHTING * P/S	20	1	1.5	A	8	CASH REGISTER *** SS	15	1	.2	A
9	LIGHTING * P/S	20	1	1.5	B	10	SPARE				B
11	LTG GNL+REF	20	1	1.5	C	12	SPARE				C
13	EXTERIOR LIGHTING ** TC	20	1	1.5	A	14	COFFEE STATION	20	1	1.5	A
15	SITE LIGHTS/ SIGNAGE ** TC	20	1	1.5	B	16	COFFEE STATION	20	1	1.5	B
17	LIGHTS, EXIT & EMERG.	20	1	1.5	C	18	ELECTRIC FIREPLACE	20	1	1.5	C
19	DISPLAY CASE BALLAST	20	1	.9	A	20	BOOSTER PUMP	20	1	1.8	A
21	DIGITAL MENUBOARD	20	1	.5	B	22	HWH IGNITER	20	1	.2	B
23	SPARE				C	24	REFRIG. & BACK BAR	20	1	1.5	C
25	SPARE				A	26	UNDERCOUNTER REFRIG.	20	1	1.2	A
27	SPARE				B	28	UNDERCOUNTER REFRIG.	20	1	1.2	B
29	WP RECEPTACLES	20	1	.18	C	30	ON-THE-GO EQPM.	20	1	1.5	C
31	EXTERIOR SIGNS ** TC	20	1	1.5	A	32	BELLS/BUZZERS/CLOCKS	20	1	.5	A
33	EXTERIOR MENU BD. ** TC	20	1	.6	B	34	HAND DRYER	25	1	2.0	B
35	PYLON SIGN ** TC	20	1	1.0	C	36	HAND DRYER	25	1	2.0	C
37	SPARE				A	38	GENERAL OUTLETS	20	1	1.5	A
39	CONVENIENCE	20	1	1.5	B	40	GENERAL OUTLETS	20	1	1.5	B
41	CONVENIENCE	20	1	1.5	C	42	TOASTER FAN	20	1	.6	C

PHASE A LOAD (KVA): 13.88
PHASE B LOAD (KVA): 13.70
PHASE C LOAD (KVA): 14.48
TOTAL LOAD (KVA): 42.06

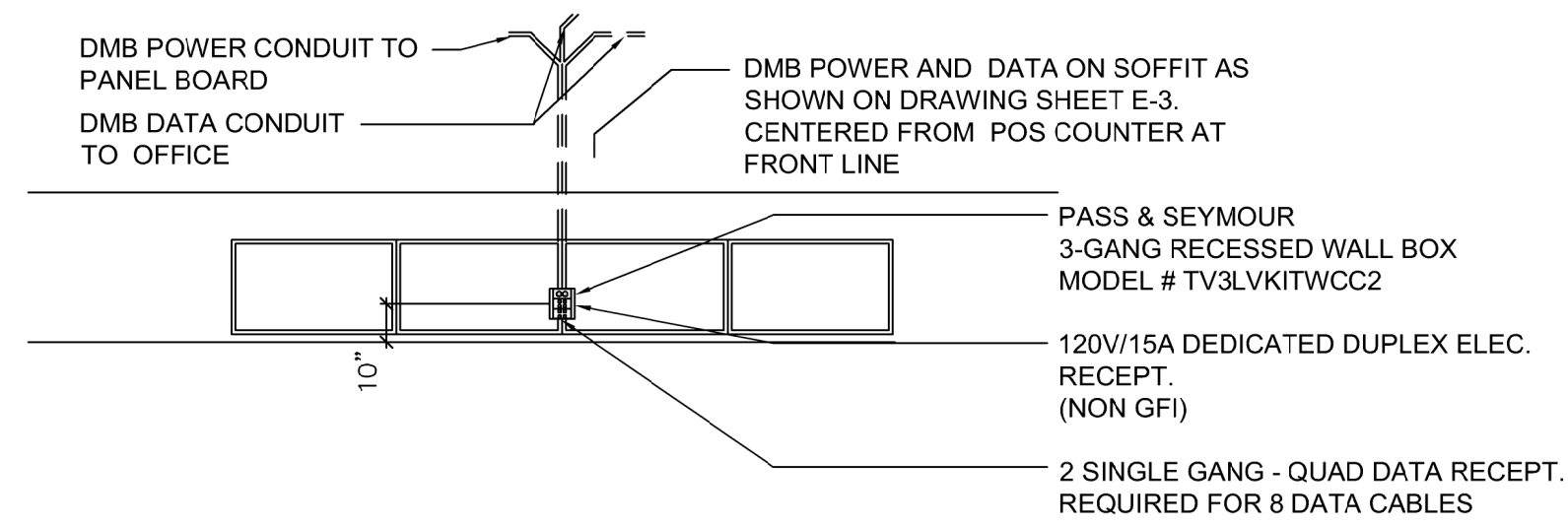
* P/S = PANEL SWITCHED *** SS = SURGE SUPPRESS
** TC = TIME CLOCK CONTROL

PANELBOARD "B"

VOLTAGE: 120/208 PHASE: 3 LOCATION: SEE PLAN
BUS AMPS: 100 WIRE: 4 MOUNTING: SURFACE
MAIN OVERCURRENT DEVICE: REMARKS: EXISTING
CIRCUIT #M-2

CKT	DESCRIPTION	BREAKER AMP	POLE	LOAD KVA	PHASE	CKT	DESCRIPTION	BREAKER AMP	POLE	LOAD KVA	PHASE
1	COFFEE MAKER	40	2	3.5	A	2	COFFEE MAKER	30	2	1.9	A
3				3.5	B	4				1.9	B
5	COFFEE MAKER	40	2	3.5	C	6	SPARE				C
7				3.5	A	8					A
9	SPARE				B	10	SPARE				B
11					C	12					C
13	ISLAND OASIS BLENDER	40	2	3.5	A	14	SPARE				A
15	*VERIFY*			3.5	B	16					B
17	ESPRESSO	30	2	1.55	C	18	ICED COFFEE BREWER	30	2	2	C
19				1.55	A	20					A
21	COOLATTA MACHINE 342	25	2	1.5	B	22	COOLATTA MACHINE 342	20	2	1.5	B
23	TAYLOR 342 SIDE 1	20	1	1.5	C	24	TAYLOR 342 SIDE 2	20	1	1.5	C
25	HOT WINTER BEVERAGE	30	2	1.7	A	26	SPARE				A
27				1.7	B	28	BEVERAGE MERCHANDISER	20	1	1.3	B
29	WARMER	20	1	.72	C	30	WARMER	20	1	1.2	C
31	SPARE				A	32	V.D.U. OUTLETS (D/T)	20	1	1.6	A
33	TOILET EXHAUST FAN	20	1	.6	B	34	V.D.U. OUTLET (SAND.)	20	1	.8	B
35	OFFICE	20	1	1.5	C	36	LAPTOP OUTLET *** SS	20	1	1.5	C
37	OFFICE	20	1	1.5	A	38	UTILITY FAN	20	1		A
39	SOUND SYSTEM	20	1	.5	B	40	LAPTOP OUTLET *** SS	20	1	1.5	B
41	OFFICE COMPUTER	20	1	.5	C	42	PRINTER(S)	20	1	1.2	C

PHASE A LOAD (KVA): 20.75
PHASE B LOAD (KVA): 18.30
PHASE C LOAD (KVA): 16.67
TOTAL LOAD (KVA): 55.72

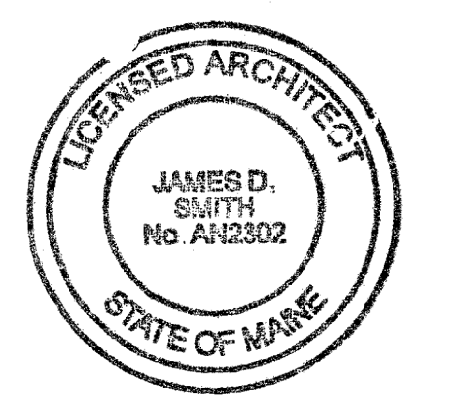
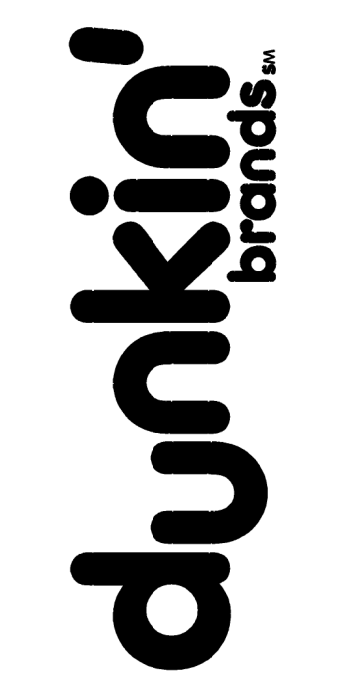


REFER TO EXTRANET FOR DMB GUIDELINES FOR PROPER
LOCATION OF DIGITAL MENU BD. RECEPTACLES.
LOCATION CAN VARY DEPENDING ON SPACE AVAILABLE
AND SIZE OF BOARDS TO BE USED

SANDWICH STATION POWER SCHEDULE

ITEM	DESCRIPTION	QTY	VOLTS	AMPS	CB	PHASE	RECEPTACLE	MTS	REMARKS
101-F	EXHAUST FAN	**	**	**	**	**	NO	**	2BOX @ CEILING/ROOF LOCATION
MALL1	MAKE-UP AIR UNIT	**	**	**	**	**	NO	**	2BOX @ CEILING/ROOF LOCATION
**	HASH BROWN FREEZER	**	115V	5.9	15A1P	1Ø	YES	NEMA 5-15R	**
**	COOK REFRIGERATOR w/ OVERSHELF	**	115V	7.2	15A1P	1Ø	YES	NEMA 5-15R	**
**	ASSEMBLY REFRIGERATOR w/ OVERSHELF	**	115V	7.2	15A1P	1Ø	YES	NEMA 5-15R	**
**	HOT HOLDING	**	208V	11.2	15A2P	1Ø	YES	NEMA 6-15R	**
**	TURBO CHEF OVEN	**	208V	30	30A2P	1Ø	YES	NEMA 6-30R	**
**	SINGLE LANE SMART TOASTER	**	208V	12.1	30A2P	1Ø	YES	NEMA 6-30R	**
**	DUAL LANE SMART TOASTER	**	208V	23.8	30A2P	1Ø	YES	NEMA 6-30R	**
**	BAGEL TOASTER	**	208V	15.9	30A2P	1Ø	YES	NEMA 6-30R	**
LOW VOLTAGE EQUIPMENT		QTY	VOLTS	AMPS	CB	PHASE	RECEPTACLE	MTS	REMARKS
11	VDU	**	120V	1.5	20A1P	NO	N/A	**	**4) LOCATED ABOVE CLG. (1) PLUGS INTO ITEM #5
11a	VDU CONTROLLER	**	120V	1.0	20A1P	YES	RMS	**	**4) LOCATED ABOVE CLG. (1) PLUGS INTO ITEM #5
12	PRINTER	**	120V	1.0	20A1P	YES	RMS	**	**4) LOCATED ABOVE CLG. (1) PLUGS INTO ITEM #5

POWER SCHEDULE NOTES:
1) MODIFY EXISTING ELECTRICAL PANELS TO ACCOMMODATE EQUIPMENT CIRCUITS AS REQ'D.
2) THE ELECTRICAL CONTRACTOR IS REQUIRED TO VERIFY ALL ELECTRICAL REQUIREMENTS OF EQUIPMENT. COORD FINAL SPECS W/ DUNKIN' BRANDS.
3) ALL RECEPTACLE MOUNTING HEIGHTS REFER TO CENTER OF RECEPTACLE.



JAMES D. SMITH, ARCHITECT, AIA
35 LOTHROP'S LANE
WEST BARNSTABLE, MA 02668
PHONE: 508-367-8920
JAMES@JSMITH11.COMCAST.NET

DATE	SCALE	NOTED	DRAWN	JOB #	C.M.
02-29-16			ARL	D15098	R. MAHONEY

STORE LOCATION:
PORTLAND, ME
599 WARREN AVE.
ELECTRIC PANEL-BOARDS,, DETAILS
P.C. #: 339010
FRESH BREW IMAGE: DARK ROAST