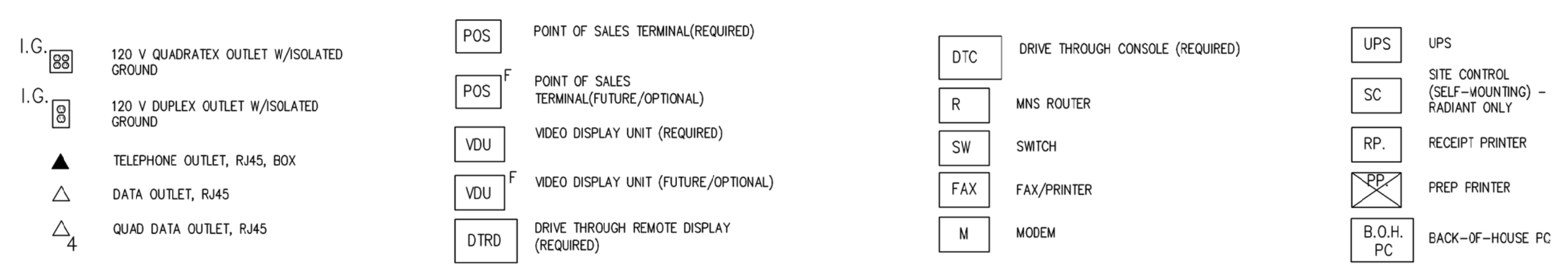


**GENERAL NOTES:**

- REFER TO HTTP://EXTRANET.DUNKINBRANDS.COM FOR A LISTING OF APPROVED POS VENDORS BY CONCEPT.
- FINAL POS DRAWINGS NEED TO BE PROVIDED TO POS VENDOR THAT IS SELECTED.
- POS VENDORS REQUIRE DEDICATED ISOLATED GROUND (DIG) OUTLETS ON A 20 AMP CIRCUIT DEDICATED ONLY TO POS EQUIPMENT. 60HZ, 120V±10%. ALL POS TERMINALS AND VIDEO DISPLAY DEVICES REQUIRE A DUPLEX OUTLET. THE BACK OFFICE CONTROLLER REQUIRES A QUAD OUTLET. THE NETWORK SWITCH REQUIRES A DUPLEX. IF FEDERAL, STATE, AND LOCAL WIRING CODES DO NOT MEET THIS REQUIREMENT, CONTACT THE POS VENDOR FOR INFORMATION ON ADDITIONAL EQUIPMENT THAT CAN BE PURCHASED TO MEET THIS REQUIREMENT. IF THIS REQUIREMENT IS NOT MET, THE POS SYSTEM WARRANTY IS INVALID.
- ALL POWER INDICATED ON THIS PLAN MUST HAVE A THIRD WIRE, ISOLATED GROUND, AND BE TERMINATED WITHIN (4) FEET OF THE DEVICE.
- IG-5362 RECEPTACLES MUST BE USED FOR ALL POS UNITS, VDU UNITS AND SITE CONTROLLER UNIT (IN OFFICE). LABEL RECEPTACLES "POS ONLY".
- LOW VOLTAGE WIRE IS REQUIRED TO BE CATEGORY 5 CABLE RUN IN 1 1/2" CONDUIT FOR POS EQUIPMENT ONLY, AND MUST BE TERMINATED WITH RJ45 JACKS. ALL POS EQUIPMENT LINES TERMINATE AT THE FRONT COUNTER CHASE.
- A 12" MINIMUM SEPARATION MUST BE MAINTAINED BETWEEN LOW VOLTAGE WIRES AND POWER WIRING (TO AVOID ELECTRICAL INTERFERENCE).
- BRAND REQUIREMENTS DICTATE THAT A MINIMUM OF THREE CONDUITS BE USED FOR DATA LINES BETWEEN THE OFFICE AND OTHER PARTS OF THE STORE- ONE CONDUIT IS TO BE DEDICATED TO POS WIRING, ONE FOR DIGITAL MENUBOARD DATA LINES, AND ANOTHER FOR NON-POS ITEMS (I.E. SECURITY CAMERAS, DT TIMERS, HEAD SET WIRING)
- EXACT # OF RECEPTACLES ON OFFICE MUST BE COORDINATED ON A PROJECT-BY-PROJECT BASIS IN TERMS OF EQUIPMENT LOCATED IN THE OFFICE
- ALL CEILING MOUNTED VDUs TO BE SUSPENDED FROM UNISTRUT BY THREADED ROD W/ WHITE PVC SLEEVE. CONNECT UNISTRUT TO ROOF STRUCTURE. VDU BY POS VENDOR; UNISTRUT & THREADED ROD BY G.C. UNISTRUT TO SUPPORT MINIMUM 50 LB. WEIGHT
- VDU MOUNTING HEIGHTS (TO BOTTOM OF MONITOR) ARE AS FOLLOWS:
  - SANDWICH STATION - 68" A.F.F.
  - DRIVE THRU - 61" A.F.F.
- DIGITAL MENUBOARD PREP WIRING:
  - PROVIDE BOX, PLATE AND 1" DIA. CONDUIT FROM FROM (2) QUAD DATA OUTLETS IN MENUBOARD SOFFIT TO (2) QUAD DATA OUTLETS IN OFFICE WALL. EITHER (A) PROVIDE PULL STRINGS IN EACH CONDUIT (CAT 5 CABLING AND FINAL DATA CONNECTIONS BY DMB VENDOR), OR (B) PROVIDE ALL CAT 5 CABLING AND FINAL CONNECTIONS TO DATA PLATES/BOXES- COORD. W/ FEE

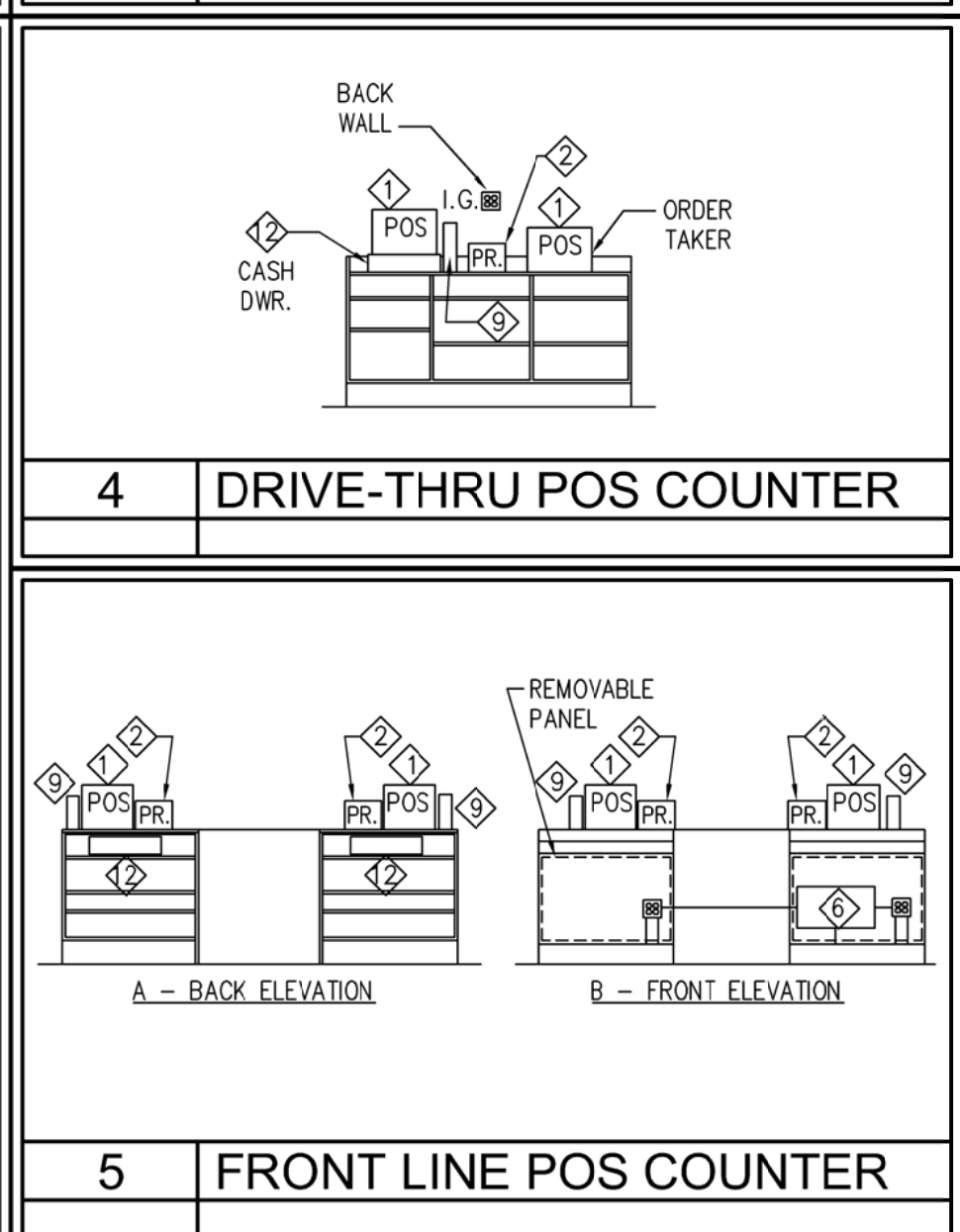
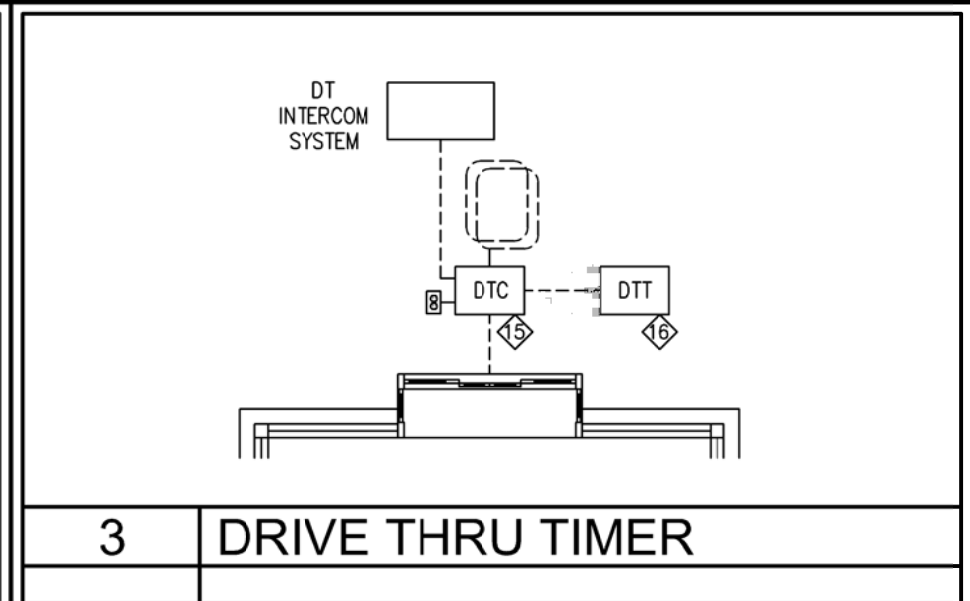
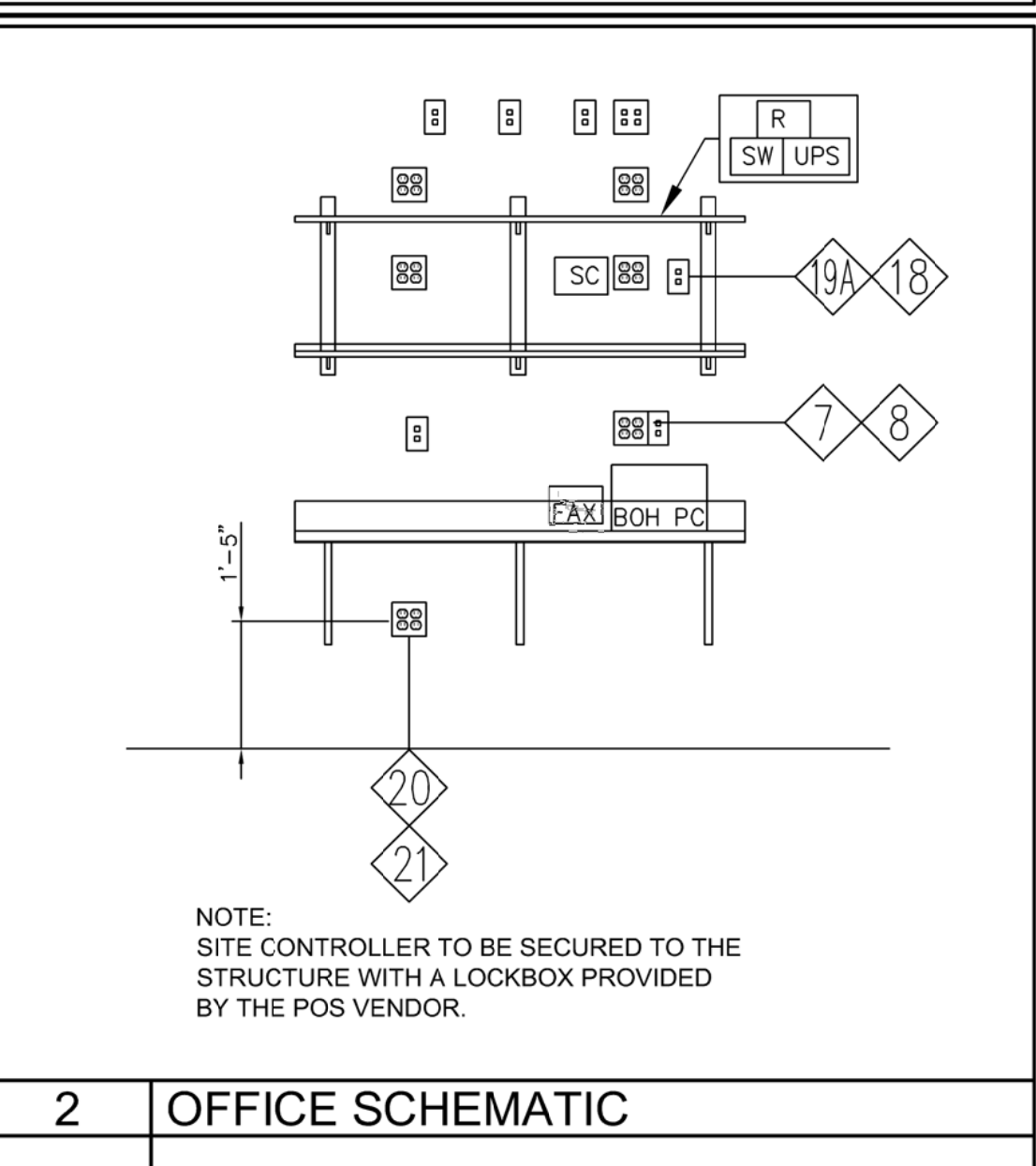
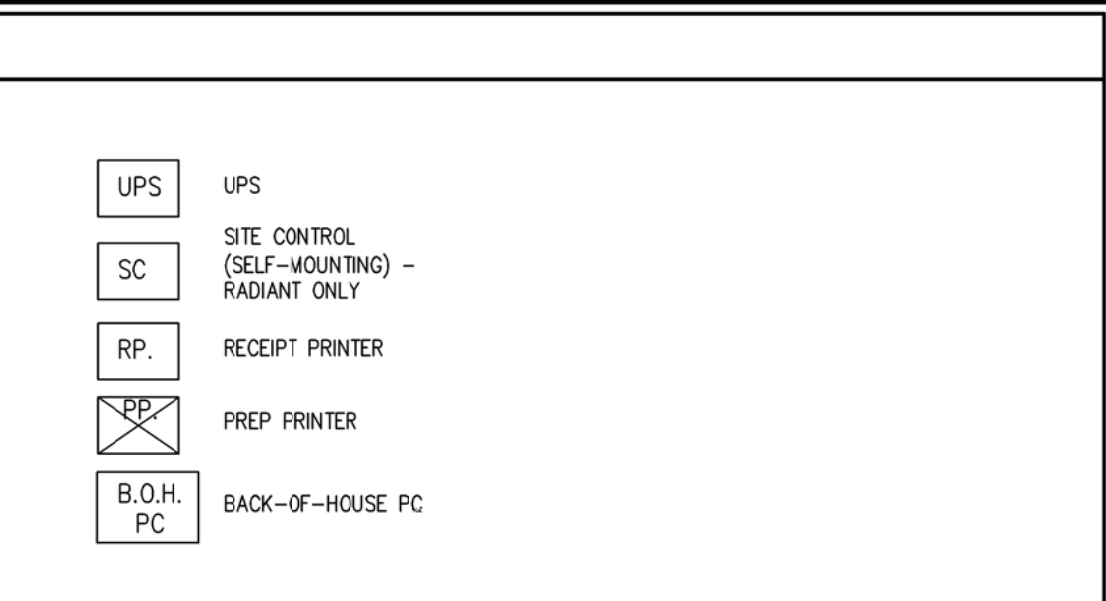
**1 POS PLAN**  
1/4"=1'-0"

**POS LEGEND**



**POS-COMMUNICATIONS EQUIPMENT SCHEDULE**

KEY NOTE #	QTY	DESCRIPTION	LOCATION	VOLTS	AMPS	TRANSFORMER	LOVO TERM	EXCEPTIONS/NOTES
<b>POS EQUIPMENT</b>								
1		POINT OF SALES TERMINAL (POS)	(2) DD FRONT COUNTER, (1) DT	100-120V	2.0	NO	RJ45	
2		RECEIPT PRINTER	(2) DD FRONT COUNTER, (1) DT	100-240V	2.0	YES	RJ45	
3		PREP PRINTER	(1) ESPRESSO STATION, (1) DUNKIN SANDWICH STATION	24/34V	1.2	YES	RJ45	
4		VDU	(1) DT EXPO STATION, (1) DUNKIN SANDWICH STATION	100-240V	1.5	NO	N/A	
5		VDU CONTROLLER (PC BASED)	(1) SS, (1) DT EXPO, (1) DT OFFICE	100-120V	1.0	YES	RJ45	
6		POS NETWORK HUB / SWITCH	POS COUNTER FRONT CHASE	100-120V	0.5	YES	RJ45	
7		PC SITE CONTROLLER	OFFICE	100-120V	4.0	NO	RJ45	
8		PRINTER / FAX / COPIER (B.O.H.)	OFFICE	100-120V	8.2	NO	N/A	
9		SCANNER	(2) DD FRONT COUNTER, (1) DT				RJ45	CONNECTED TO POS UNITS
10		PRICE CONFIRMATION DISPLAY	MOUNT OUTSIDE AT DT WINDOW				RJ45	CONNECTED TO DT POS UNIT
12		CASH DRAWER	UNDER CTR-ALL POS EXCL. D.T.	N/A	N/A	N/A	RJ45	DT ORDER TAKER DOES NOT GET CASH DRAWER; DT CASH DRAWER ON TOP OF COUNTER; AUTOMATIC COIN CHANGER IS OPTIONAL
<b>OTHER COMMUNICATIONS DEVICES</b>								
15		DRIVE THROUGH (DT) TIMER CONSOLE	OFFICE	120V	?	NO	RS232	MUST BE WITHIN 60FT OF DISPLAY
16		DT REMOTE DISPLAY	NEAR DT, VISIBLE TO ENTIRE SERVICE AREA	LOW VOLT	?	NO		
<b>PHONE &amp; DATA LINES</b>								
18		SPARE						
19		SPARE						
20		FAX LINE	OFFICE	LOW VOLT	N/A	N/A	RJ45	FAX LINE FOR OFFICE
21		PHONE LINE	OFFICE	LOW VOLT	N/A	N/A	RJ45	PHONE LINE FOR OFFICE
22		SPARE						
23		HIGH SPEED INTERNET (MNS)	OFFICE	LOW VOLT	N/A	N/A	RJ45	FOR SITE CONTROLLER & BOH PC
24		MARCH SYSTEMS SECURITY	SECURITY SYSTEM	LOW VOLT	N/A	N/A	RJ45	FOR MARCH SYSTEMS- PLUGS INTO MNS ROUTER PORT #2
25		DIGITAL MENUBOARD	OFFICE/MB SOFFIT	LOW VOLT	N/A	N/A	RJ45	BY VENDOR- PLUGS INTO MNS ROUTER PORT #4
26		BRAND APPROVED WIFI	OFFICE	LOW VOLT	N/A	N/A	RJ45	BY VENDOR- PLUGS INTO MNS ROUTER PORT #5
		DSL/CABLE	OFFICE	LOW VOLT	N/A	N/A	RJ45	FOR NON-MNS SUPPORTED APPLICATIONS (ATM, MUSIC, NON-MARCH SURVEILLANCE, ETC.)



**POS - COMMUNICATIONS**

**EQUIPMENT NOTES:**

- VDU HEIGHT TO BE COORDINATED WITH EQUIPMENT AND SIGNAGE (SEE ELEVATIONS). G.C. IS TO PROVIDE SOLID IN-WALL BLOCKING FOR THE VDU AS REQUIRED.
- ONLY REQUIRED EQUIPMENT IS VISUALLY REPRESENTED AND TAGGED IS SHOWN ON THIS FLOOR PLAN. OPTIONAL EQUIPMENT IS TAGGED BUT NOT SHOWN GRAPHICALLY.

**HIGH SPEED SYSTEM NOTES:**

BEFORE HIGH SPEED CAN BE INSTALLED AT THE SITE, THE FOLLOWING ITEMS MUST BE IN PLACE PRIOR TO THE INSTALLATION. THESE ELEMENTS NEED TO BE IN PLACE 6-7 WEEKS BEFORE THE STORE OPENING TO ENSURE HIGH SPEED CONNECTIVITY.

- SINGLE, 2" DEDICATED CONDUIT FROM BUILDING TO CURB, W/ 3-4 PULL STRINGS.
- FRAMED OFFICE IN A BUILDING THAT HAS A ROOF, CEMENT FLOORS AND EXTERIOR WALLS. ENSURE RECEPTACLE IN PLACE AND POWERED FOR ROUTER CONNECTION.
- GROUNDING ELECTRICAL (QUAD OUTLET) - THE FOLLOWING IS A LIST OF ACCEPTABLE GROUNDS IN ORDER OF PREFERENCE:
  - BUILDING SERVICE GROUND (MAIN GROUND ELECTRODE SYSTEM)
  - MAIN ELECTRIC BOX
  - BUILDING STEEL
  - WATER PIPE (AN ACCEPTABLE WATER PIPE IS A METAL UNDERGROUND WATER PIPE IN DIRECT CONTACT WITH THE EARTH FOR 10 FEET OR MORE AND ELECTRICALLY CONTINUOUS TO THE POINT WHERE THE PROTECTOR GROUND IS INSTALLED)

**MARCH SURVEILLANCE SYSTEM NOTES:**

- DEDICATED RECEPTACLE REQUIRED, 24" A.F.F.
- CLEAR WALL SPACE REQUIRED = 24" X 24" TO HANG DVR. REFER TO MANUFACTURER'S SPECIFICATION SHEET. UNIT IS DOCKED IN A LOCKABLE BRACKET WHICH ALLOWS UNIT TO SLIDE OUT.
- A DEDICATED PORT (#2) ON MNS ROUTER IS ASSIGNED TO MARCH SYSTEMS.
- DUNKIN BRANDS REQUIRES A MINIMUM OF ONE (1) CAMERA PER REGISTER TO BE CONSIDERED AS A COMPLIANT INSTALLATION.



**JAMES D. SMITH, ARCHITECT, AIA**  
35 LOTHROP'S LANE  
WEST BARNSTABLE, MA 02668  
PHONE: 508-367-8820  
JAMESDSMITH11@COMCAST.NET

DATE	SCALE	NOTED	DRAWN	JOB #	C.M.
02-29-16			ARL	D15098	R. MAHONEY

STORE LOCATION: **PORTLAND, ME**  
598 WARREN AVE.

**ELECTRIC POS & LOW-VOLTAGE**

P.C. #: 339010

FRESH BREW IMAGE: DARK ROAST

**E-3**