

EXTERIOR FINISH MATERIAL SCHEDULE

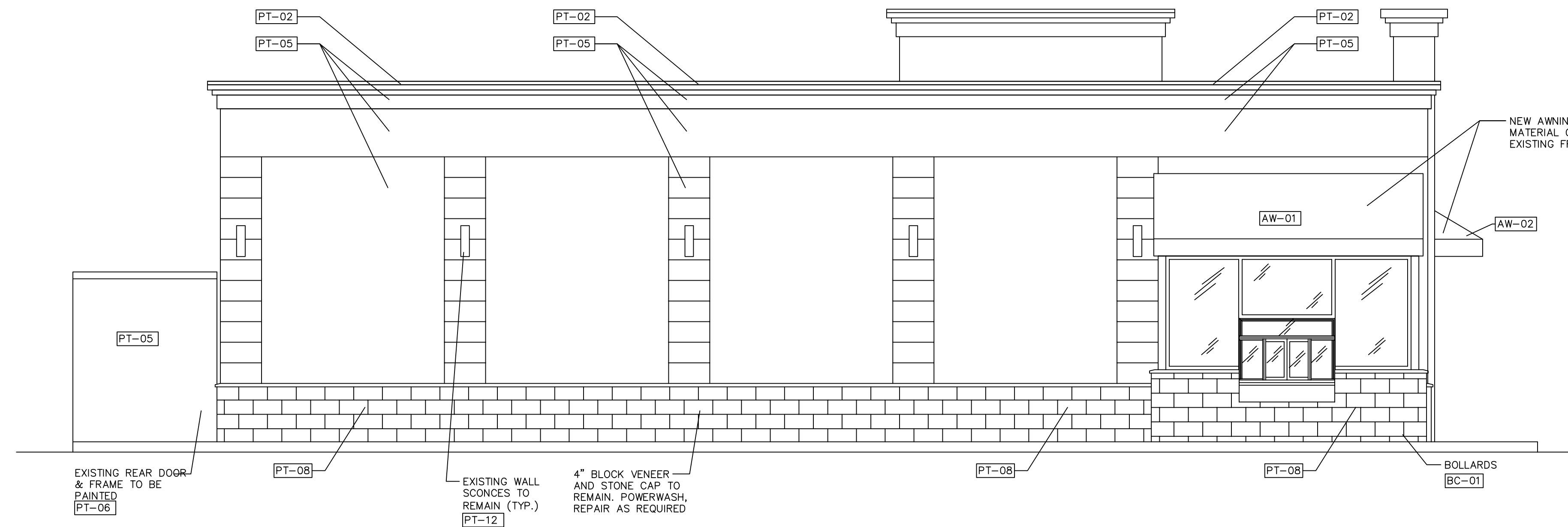
EXTERIOR FINISH MATERIAL SCHEDULE

Checked: 12/18/2014

| CODE | MATERIAL | MANUFACTURER | PRODUCT # | DESCRIPTION | REMARKS |
|----------|----------------|---------------------|----------------------|--|---|
| AW-01 | AWNING | ARLON | DD FRESH BREW AWNING | BROWN AWNING WITH FRESH BREW MESSAGING | STANDARD AWNING FOR FRESH BREW DESIGNS W/ ORANGE BAND |
| AW-01ALT | AWNING | ARLON | DD FRESH BREW AWNING | BROWN AWNING - PLAIN MATERIAL | STANDARD PLAIN MATERIAL FOR FIELD ERADICATION OF CUP ICON AND COFFEE & MORE MESSAGE |
| AW-02 | AWNING | ARLON | DD FRESH BREW AWNING | ORANGE AWNING WITH FRESH BREW MESSAGING | ALTERNATE AWNING FOR FB DESIGNS WHERE ORANGE BAND IS NOT ALLOWED OR PRACTICAL TO OVERALL DESIGN |
| AW-02ALT | AWNING | ARLON | DD FRESH BREW AWNING | ORANGE AWNING - PLAIN MATERIAL | STANDARD PLAIN MATERIAL FOR FIELD ERADICATION OF CUP ICON AND COFFEE & MORE MESSAGE |
| AW-03 | AWNING | ARLON | BR FLAVORS AWNING | PINK AWNING | STANDARD AWNING FOR BR FLAVOR DESIGNS W/BLEU BAND |
| BC-1 | BOLLARD COVERS | IDEAL SHIELD | BC1-CC-4-52-S | 4"W X 52"H ORANGE BOLLARD SLEEVE | |
| EIFS-02 | EIFS | DRYVIT SYSTEMS, INC | DUDO-10-1020 | PAINT COLORS TO MATCH MONOLITH SCHEME | *ALTERNATE MATERIAL TO HARDIPLANK BOARDS ON MONOLITH |
| EIFS-03 | EIFS | DRYVIT SYSTEMS, INC | DUDO-10-1020 | MATCH SHERWIN WILLIAMS 7536 "BITTERSWEET STEM" | *ALTERNATE BUILDING MATERIAL TO HARDIPLANK FIELD SIDING (NON-MONOLITH). |
| EIFS-04 | EIFS | DRYVIT SYSTEMS, INC | DUDO-10-1020 | MATCH SHERWIN WILLIAMS #6811 HONORABLE BLUE | BLUE BAND MATERIAL |
| EIFS-05 | EIFS | DRYVIT SYSTEMS, INC | DUDO-10-1020 | MATCH SHERWIN WILLIAMS 7006 "EXTRA WHITE" | *ALTERNATE BUILDING MATERIAL TO HARDIPLANK SIDING (BR SEGMENT OF COMBO ONLY). |
| PT-01 | PAINT | SHERWIN WILLIAMS | 6372 | "INVITING IVORY" | SATIN |
| PT-02 | PAINT | SHERWIN WILLIAMS | 6884 | "OBSTINATE ORANGE" | SATIN |
| PT-03 | PAINT | SHERWIN WILLIAMS | 6140 | "MODERATE WHITE" | SATIN |
| PT-04 | PAINT | SHERWIN WILLIAMS | 6099 | "SAND DOLLAR" | SATIN |
| PT-05 | PAINT | SHERWIN WILLIAMS | 7536 | "BITTERSWEET STEM" | SATIN |
| PT-06 | PAINT | SHERWIN WILLIAMS | 7724 | "CANOE" | SATIN |
| PT-07 | PAINT | SHERWIN WILLIAMS | 6117 | "SMOKEY TOPAZ" | SATIN |
| PT-08 | PAINT | SHERWIN WILLIAMS | 6096 | "JUTE BROWN" | SATIN |
| PT-09 | PAINT | SHERWIN WILLIAMS | 6097 | "STURDY BROWN" | SATIN |
| PT-10 | PAINT | SHERWIN WILLIAMS | 6090 | "JAVA" | SATIN |
| PT-11 | PAINT | SHERWIN WILLIAMS | 6069 | "FRENCH ROAST" | SATIN |
| PT-12 | PAINT | SHERWIN WILLIAMS | 6006 | "BLACK BEAN" | SATIN |
| PT-13 | PAINT | SHERWIN WILLIAMS | 7006 | "EXTRA WHITE" | SATIN (COMBO - BR FIELD) |

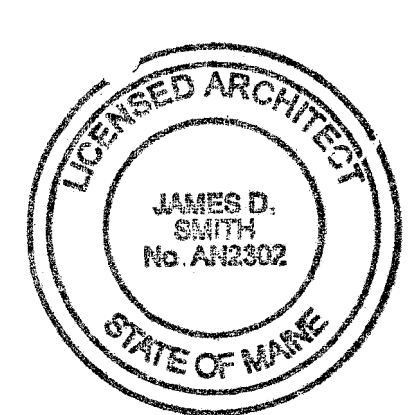
1 PYLON SIGN ELEVATION

1/4" = 1'-0" NOTE:



2 EXTERIOR ELEVATION @ LEFT SIDE

1/4" = 1'-0" NOTE:



JAMES D. SMITH, ARCHITECT, AIA
 35 LOTHROP'S LANE
 WEST BARNSTABLE, MA 02668
 PHONE: 508-367-8920
 JAMESDSMITH1@COMCAST.NET

| REVISIONS | DATE | SCALE | NOTED | DRAWN | JOB # | C.M. |
|-----------|----------|-------|-------|-------|--------|------------|
| | 02-29-16 | | | ARL | D15098 | R. MAHONEY |

STORE LOCATION:
PORTLAND, ME
 599 WARREN AVE.
EXTERIOR ELEVATIONS
 P.C. #: 339010
 FRESH BREW IMAGE: "DARK ROAST"

A-5B