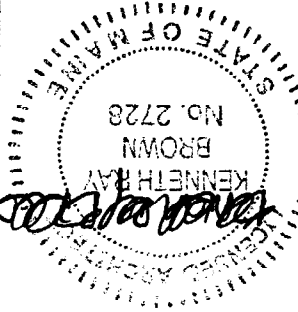


No.	DESCRIPTION
	COVER SHEET
1	SITE PLAN
2	SITE DETAILS
3	FOUNDATION PLAN
4	FLOOR PLAN
5	EXTERIOR ELEVATIONS
6A	INTERIOR ELEVATIONS/DINING ROOM
6B	INTERIOR ELEVATIONS/DINING ROOM FLOOR FINISH PLAN
6C	INTERIOR ELEVATIONS/RESTROOMS
6D	INTERIOR ELEVATIONS/BACKROOM
6E	INTERIOR ELEVATIONS/BACKROOM
7A	WALL SECTIONS
7B	WALL SECTIONS
8	STRUCTURAL PLAN
8A	STRUCTURAL DETAILS AND NOTES
9	EQUIPMENT PLAN
10A	REGISTER SYSTEM & MENU BOARDS
10B	SECURITY SHEET
11	HVAC PLAN
12	ELECTRICAL PLAN
13	LIGHTING AND REFLECTED CEILING PLAN
14	ELECTRICAL DISTRIBUTION
15	PLUMBING PLAN
15A	PLUMBING ROUGH-IN PLAN ANGUL FIRE SUPPRESSION SYSTEM

No.	DESCRIPTION
F-1	FINISH SCHEDULE - TERRA
F-2	FINISH SCHEDULE - DELTA
F-3	FINISH SCHEDULE - SUMMIT
F-4	FINISH SCHEDULE - MESA
5.1	SPECIFICATIONS
5.2	SPECIFICATIONS
5.3	SPECIFICATIONS
5.4	SPECIFICATIONS
5.5	CONTRACTORS BID SHEET

- GENERAL NOTES**
- SCOPE OF WORK
NEW RESTAURANT
 - BUILDING TYPE
A-3 ASSEMBLY
 - CONSTRUCTION TYPE
SB WOODFRAME
UNPROTECTED
 - ALL POSTING REQUIREMENTS SHALL BE MET PER 1999 BOCA NATIONAL BUILDING CODE AND LOCAL REQUIREMENTS (AS FOLLOWS) USE GROUP ASSEMBLY (A)
 - DESIGN LOADS
FLOOR 100 PSF
GROUND SNOW 50 PSF
ROOF (T) 35 PSF
WIND 80 MPH
EXPOSURE "B"
 - ALL EXTERIORS SHALL COMPLY WITH 1999 BOCA NATIONAL BUILDING CODE
 - ALL HANDICAPPED REQUIREMENTS SHALL COMPLY WITH ANSI 117.1
 - ALL VENTILATION SHALL COMPLY WITH 1995 BOCA NATIONAL MECHANICAL CODE
 - ALL FIRE DAMPERS SHALL BE INSTALLED PER N.F.P.A. 101

PLAN NUMBER: EVOLUTION 2000 REVISION 2
 PLAN DATE: JANUARY 28, 2002
 © COPYRIGHT 2001, MENDY'S INTERNATIONAL, INC. ALL RIGHTS RESERVED.
 OWNER: MENDY'S INTERNATIONAL, INC.
 SITE ADDRESS: WARREN AVENUE
 LOCATION: PORTLAND, MAINE



2001-05B - PORTLAND, MAINE - COLONIAL EVOLUTION 2000 REVISION 2
 BRICK / SERIES 1 / GAS HEAT - GAS/ELECTRIC COOKING

2001-05B
 COLONIAL

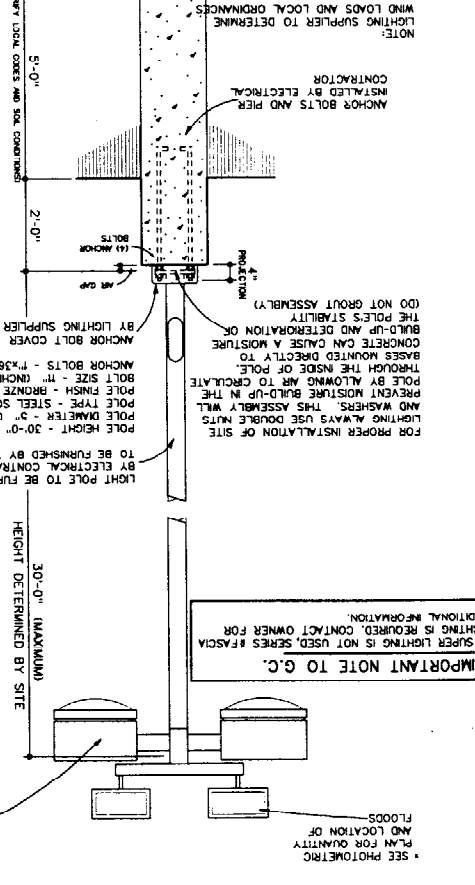
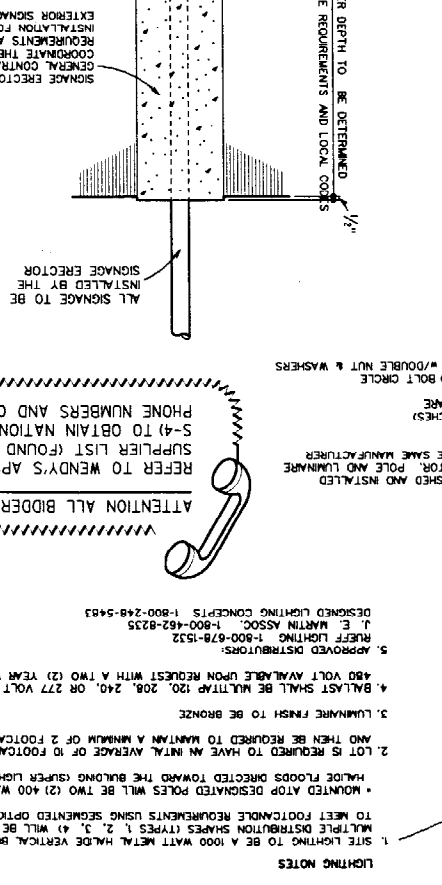
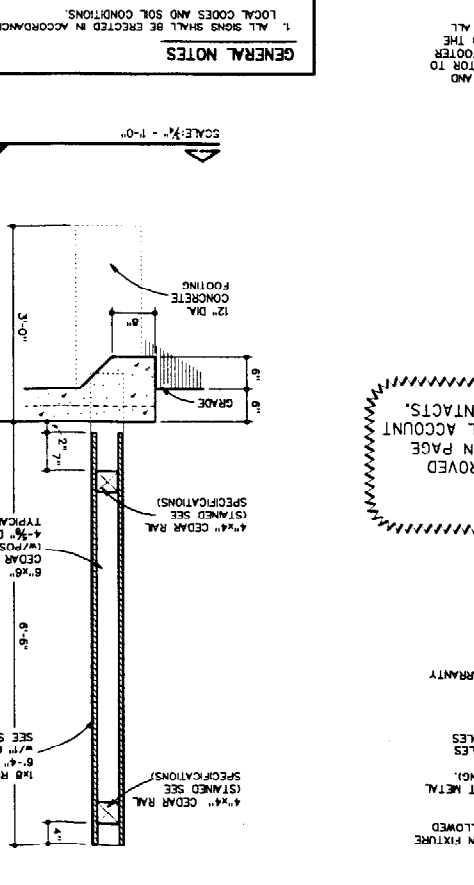
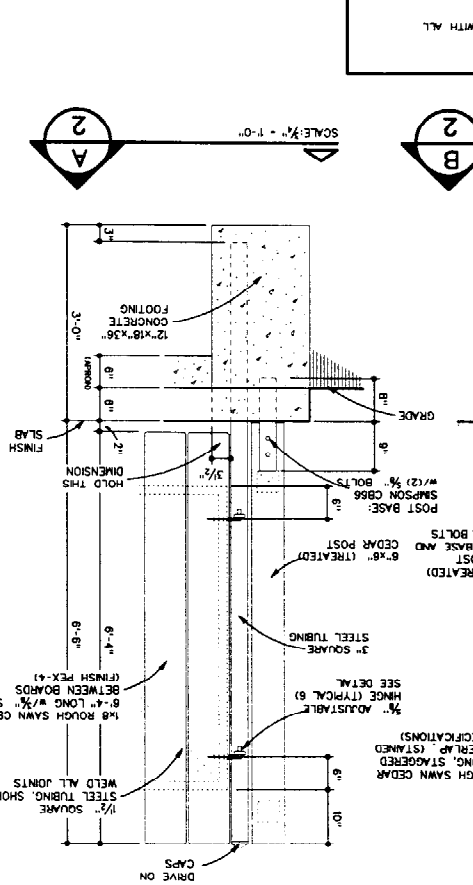
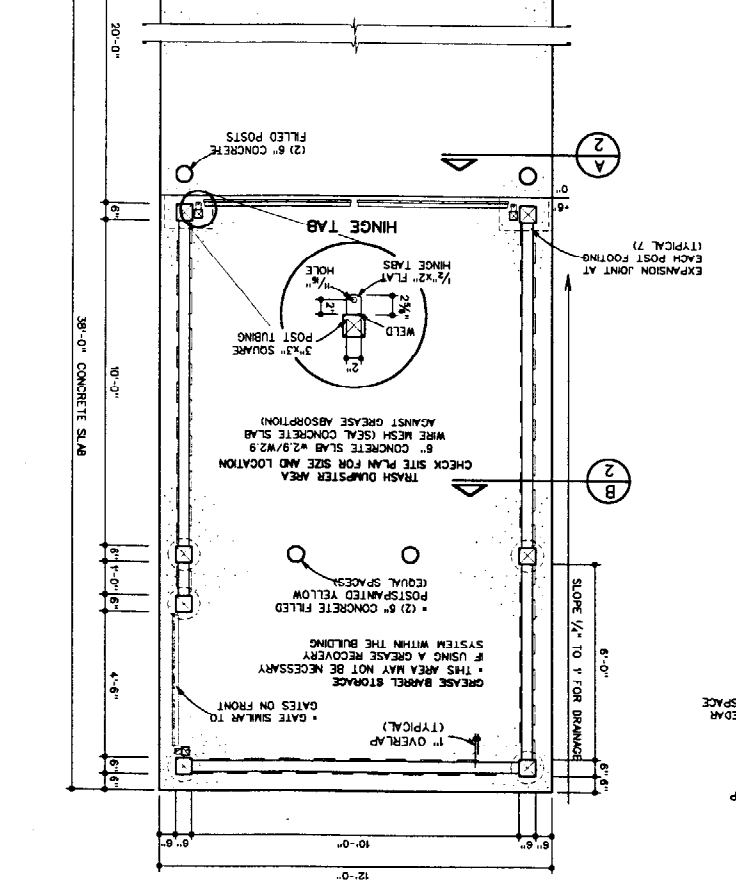
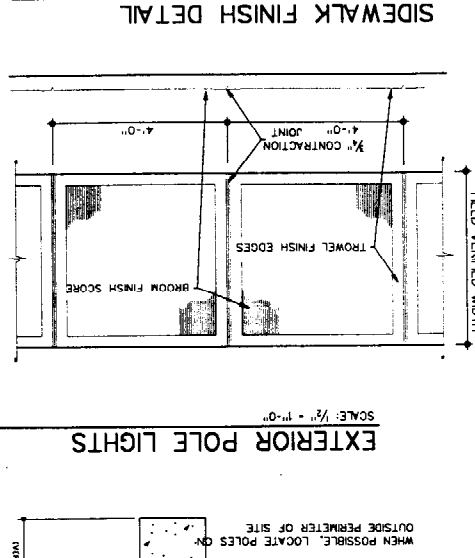
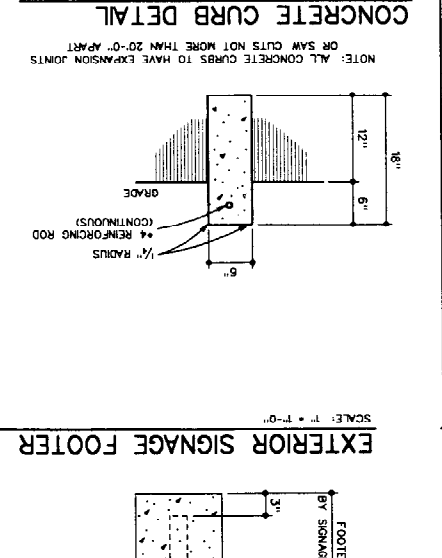
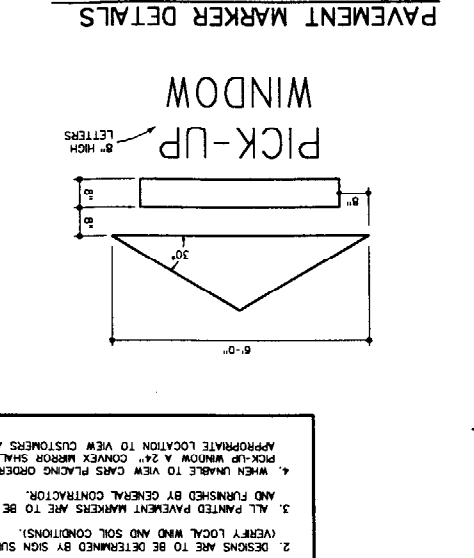
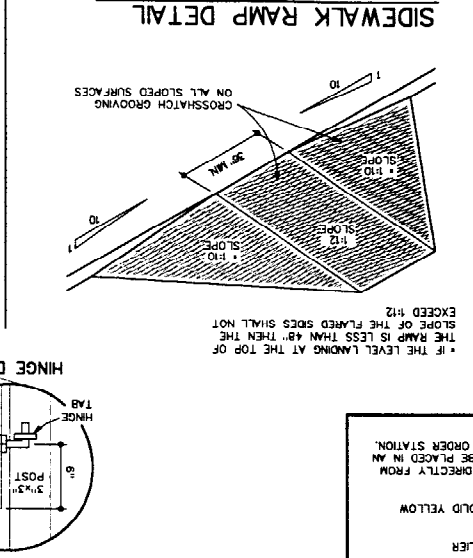
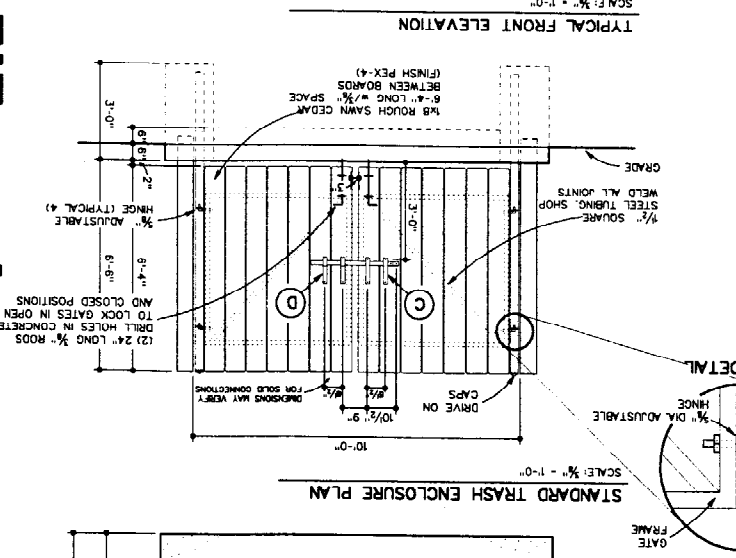
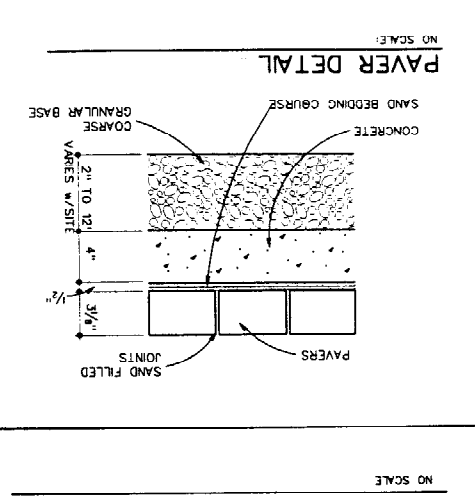
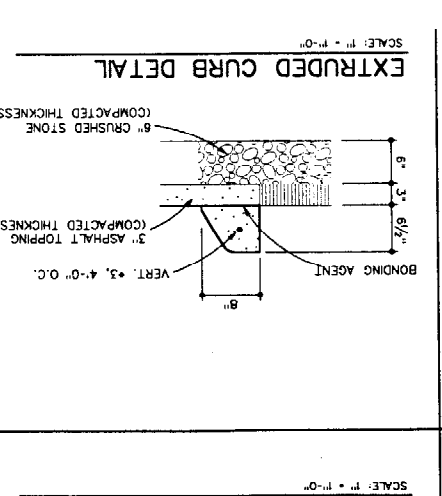
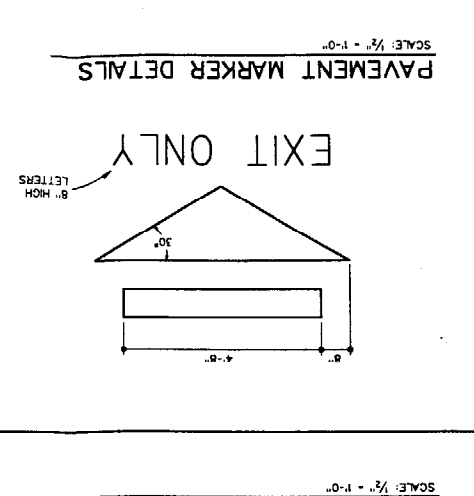
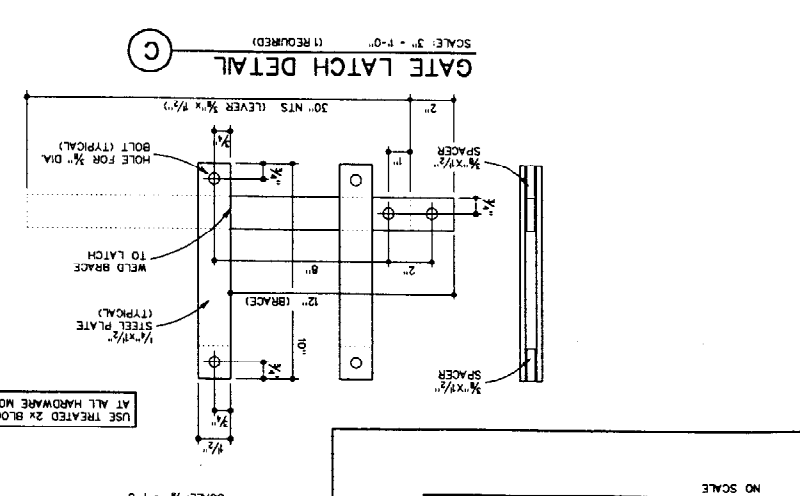
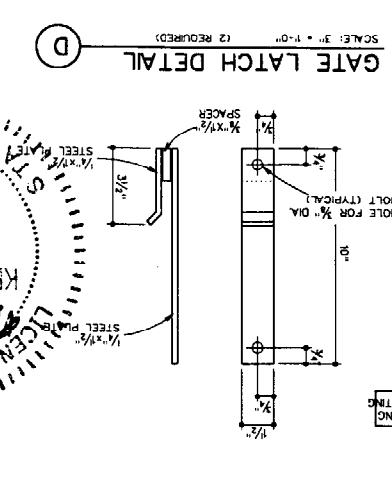
2001-058
JOB No. SHEET No. 2
E-2000
PLM No. 2728
KENNETH RAY
LICENSED ARCHITECT
WENDY'S STORE NO.
PORTLAND, MAINE

Wendy's
OLD FASHIONED HAMBURGERS
Warren Avenue
Portland, Maine

SCALE: SHOWN

DRAWN	MB	1/21/02
CHECK	MB	1/21/02
REV. 1		
REV. 2		
REV. 3		
PL. 01	MB	1/21/02
PL. 02		

design + inc.
2011 Washington Road
Buxton, Kentucky 40205 502-651-5011

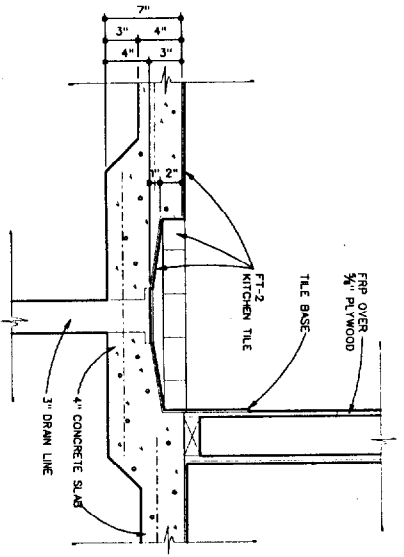


LIGHTING NOTES

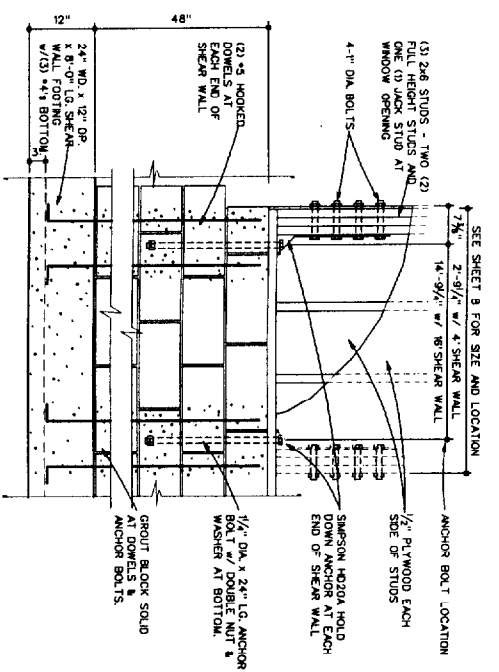
1. SITE LIGHTING TO BE A 1000 WATT METAL HALIDE VERTICAL BURN FIXTURE
2. MULTIPLE DISTRIBUTION SHAPES (TYPES 1, 2, 3, 4) WILL BE ALLOWED TO MEET FOOTCANDLE REQUIREMENTS USING SEGMENTED OPTICS
3. MOUNTED TYPE DESIGNATED POLES WILL BE TWO (2) 400 WATT METAL HALIDE FLOODS DIRECTED TOWARD THE BUILDING (SUPER LIGHTING)
4. LOT IS REQUIRED TO HAVE AN INITIAL AVERAGE OF 2 FOOTCANDLES AND THEN BE REQUIRED TO MAINTAIN A MINIMUM OF 2 FOOTCANDLES
5. BALLAST SHALL BE MULTITAP 120, 208, 240, OR 277 VOLT
6. 480 VOLT AVAILABLE UPON REQUEST WITH A TWO (2) YEAR WARRANTY
7. REFER TO WENDY'S APPROVED SUPPLIER LIST (FOUND ON PAGE S-4) TO OBTAIN NATIONAL ACCOUNT PHONE NUMBERS AND CONTACTS.
8. ATTENTION ALL BIDDERS
9. APPROVED DISTRIBUTORS:
E. E. MARTIN ASSOC. 1-800-678-1522
REFLECT LIGHTING 1-800-462-8235
DESIGNED LIGHTING CONCEPTS 1-800-248-5483
10. LUMINAIRE FINISH TO BE BRONZE
11. LUMINAIRE FINISH TO BE BRONZE
12. LIGHT POLE TO BE FURNISHED AND INSTALLED BY ELECTRICAL CONTRACTOR, POLE AND LUMINAIRE TO BE FURNISHED BY THE SAME MANUFACTURER
13. POLE HEIGHT - 30'-0"
14. POLE TYPE - BRONZE
15. POLE FINISH - BRONZE
16. PREVENT MOISTURE BUILD-UP IN THE ASSEMBLY AND WASHERS. THIS ASSEMBLY WILL ALLOW AIR TO CIRCULATE THROUGH THE INSIDE OF POLE.
17. BOLT SIZE - 1/2" (ANCHOR) BOLT CIRCLE
18. ANCHOR BOLTS - 1/2" (ANCHOR) BOLT CIRCLE
19. BASES MOUNTED DIRECTLY TO CONCRETE CAN CAUSE A MOISTURE BUILD-UP AND DETEIORATION OF THE POLE'S STABILITY
20. DO NOT GROUT ASSEMBLY)
21. ANCHOR BOLT COVER BY LIGHTING SUPPLIER
22. LIGHTING SUPPLIER TO DETERMINE WIND LOADS AND LOCAL ORDNANCES WHEN POSSIBLE, LOCATE POLES ON OUTSIDE PERIMETER OF SITE
23. NOTE: LIGHTING SUPPLIER TO DETERMINE WIND LOADS AND LOCAL ORDNANCES WHEN POSSIBLE, LOCATE POLES ON OUTSIDE PERIMETER OF SITE

IMPORTANT NOTE TO G.C.
IF SUPER LIGHTING IS NOT USED, SERIES #F50A LIGHTING IS REQUIRED. CONTACT OWNER FOR ADDITIONAL INFORMATION.

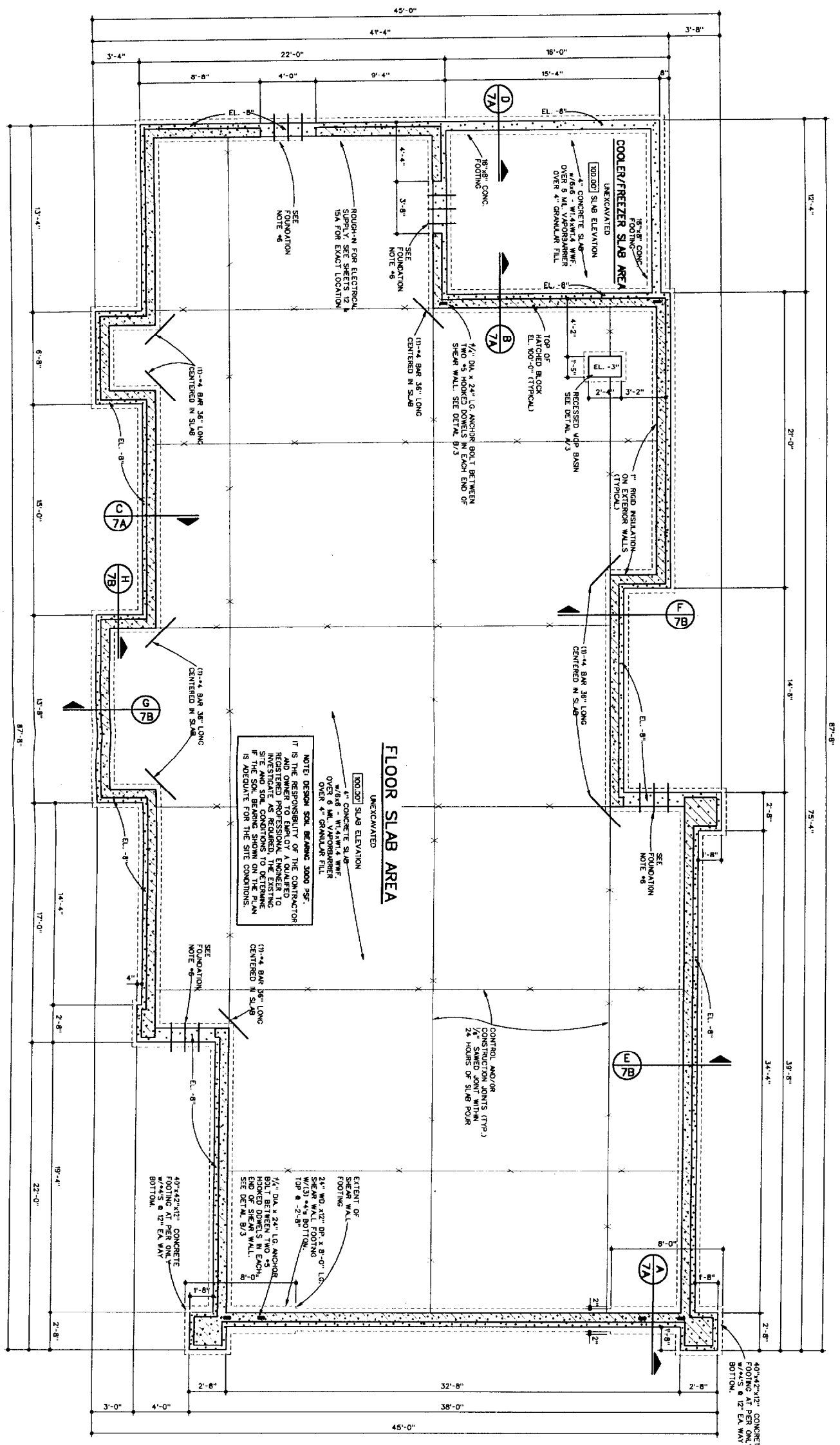
SEE PHOTOGRAPHIC PLAN FOR QUANTITY AND LOCATION OF FLOODS



A RECESSED MOP BASIN DETAIL
SCALE: 1/2" = 1'-0"



B SHEAR WALL DETAIL
SCALE: 3/4" = 1'-0"



FLOOR SLAB AREA
UNEXCAVATED
4" CONCRETE SLAB
4" W/4" W/4" W/4" W/4"
OVER 4" GRANULAR FILL

NOTE: DESIGN SOIL BEARING 3000 P.S.F.
IT IS THE RESPONSIBILITY OF THE CONTRACTOR TO INVESTIGATE AS REQUIRED, THE EXISTING SITE AND SOIL CONDITIONS TO DETERMINE IF THE FOUNDATION DESIGN IS APPROPRIATE FOR THE SITE CONDITIONS.

- FOUNDATION NOTES**
1. ALL FOOTINGS ARE 20" x 8" w/ 2-#4 BARS, CONTINUOUS, UNLESS NOTED OTHERWISE.
 2. VERIFY DEPTH OF FOOTING BELOW GRADE WITH LOCAL CODE.
 3. CONCRETE BLOCK COURSE STARTS AT TOP OF FOOTING WITH OSB #1.
 4. SEE ELECTRICAL SHEETS FOR LOCATIONS OF CONDUIT RUNS.
 5. SEE PLUMBING PLAN FOR LOCATION OF PRING RODS.
 6. AT DOOR OPENINGS:
• PROVIDE 3-#4 BARS AT 2'-0" ON CENTER x 2'-0" LONG, W/A PROTECTION PLAN AS MOUNTED ON FOUNDATION PLAN.
• POUR SLAB THROUGH OPENING.
• PROVIDE CONTROL JOINT CENTERED ON WALL.
 7. ALL FOOTINGS ARE DESIGNED FOR 3000 P.S.F. SOIL BEARING PRESSURE. VERIFY SOIL BEARING CAPACITY BEFORE PLACING FOOTINGS.
 8. PROVIDE 1/2" DIA. x 8" AB. W/ 3" HOOKS & 32" O.C. TYPICAL IN STUD WALLS. GROUT BLOCK SOLD

SCALE:	1/4" = 1'-0"
DRAWN:	KB 1/21/02
CHECK:	KB 1/21/02
REV. #1:	
REV. #2:	
REV. #3:	
PLOT:	KB 1/21/02
PLOT:	

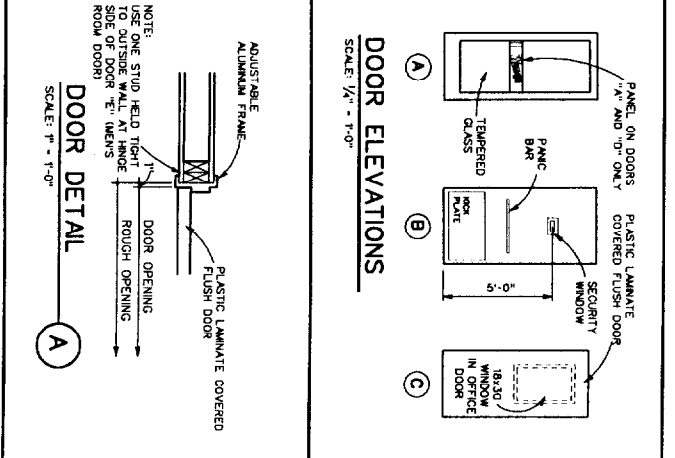
design +, inc.
2011 bardstom road Louisville, Kentucky 40205 502-454-5011

Wendy's
Warren Avenue
Portland, Maine
OLD FASHIONED HAMBURGERS
FOUNDATION PLAN

STATE OF MAINE
LICENSE
KENNETH BROWN
No. 2723
E-2000
PLAN NO/REVISION #2
JOB No. SHEET No.
2001-058 3

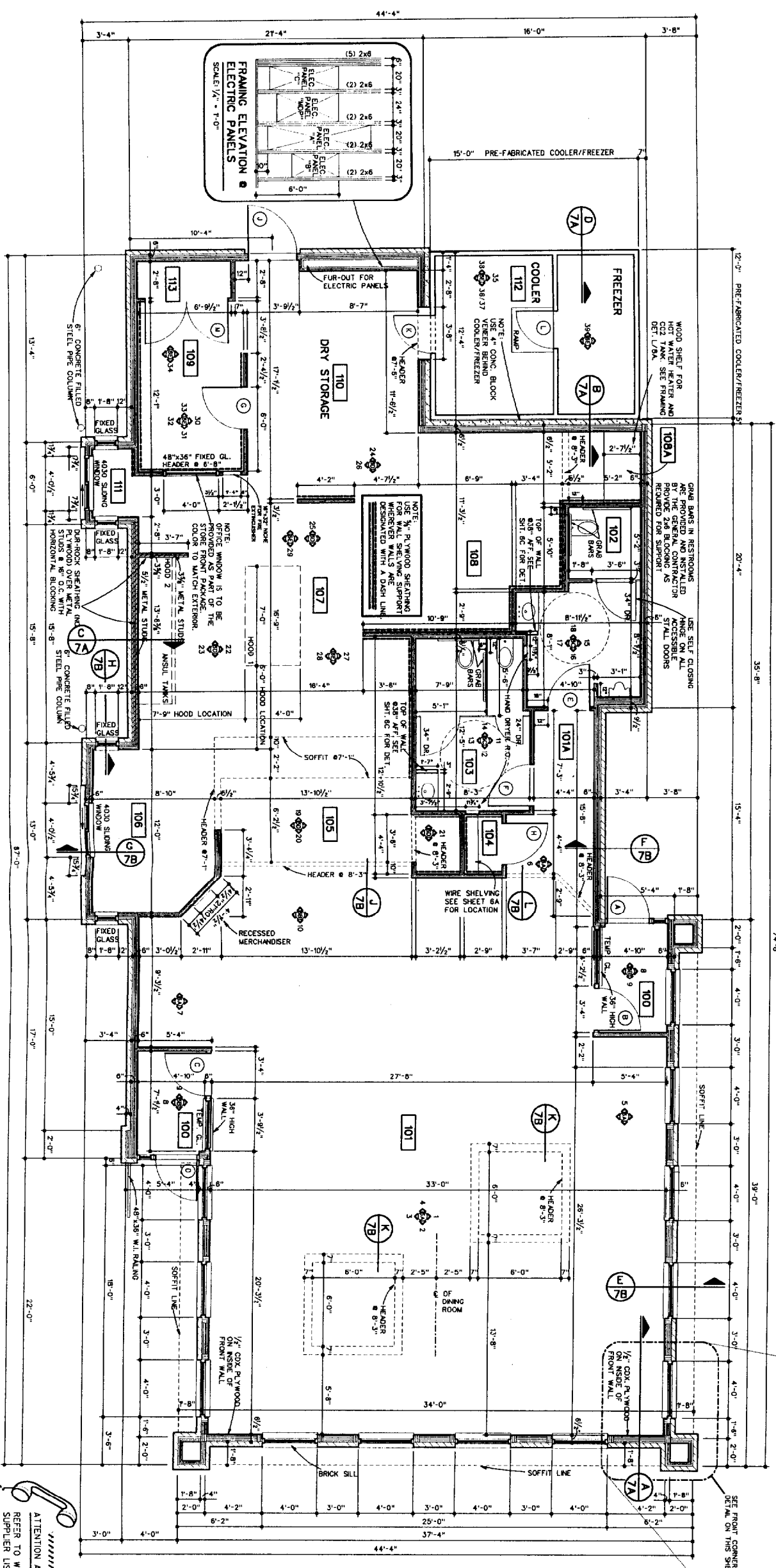
ROOM	FLOOR	BASE	WALLS	CEILING	TRIM	DOOR
100 VESTIBULE	QUARRY TILE	WOOD	PANELING	9'-0" CEILING HEIGHT	PAINT	ALUMINUM
101 PUBLIC AREA (DINING)	CARPET	CERAMIC TILE	CERAMIC TILE	10'-0" CEILING HEIGHT	STAIN	PLASTIC LAMINATE
102 MEN'S ROOM	DECOR. TILE	WOOD	F.R.P.	9'-0" CEILING HEIGHT	ALUM. DOOR TRIM	
103 WOMEN'S ROOM	FLOOR MATS	CERAMIC TILE	VINYL FABRIC	10'-0" CEILING HEIGHT		
104 CLOSET	QUARRY TILE	WOOD	EXPOSED BRICK	9'-0" CEILING HEIGHT		
105 SERVING AREA	DECOR. TILE	CERAMIC TILE	PAINTED DRYWALL	SUSPENDED		
106 SERVING AREA	QUARRY TILE	WOOD	ACUSTIC	DRYWALL		
107 SERVING AREA	DECOR. TILE	CERAMIC TILE	WASHABLE	HEIGHT (FEET)		
108 PREPARATION AREA	QUARRY TILE	WOOD	PAINT			
109 OFFICE	DECOR. TILE	CERAMIC TILE	STAIN			
110 DRY STORAGE AREA	QUARRY TILE	WOOD	ALUMINUM			
111 SERVING AREA	DECOR. TILE	CERAMIC TILE	PLASTIC LAMINATE			
112 COOLER/FREEZER	QUARRY TILE	WOOD				
113 EQUIPMENT CLOSET	QUARRY TILE	WOOD				

DOOR	TYPE	FRAME	HINGES	LATCH-CATCHES	ACC.
100	PLASTIC LAMINATE COVERED FLUSH DOOR WITH ADJUSTABLE ALUMINUM FRAME, USE "A" SERIES 500 AS LATCH AND "T" ALTERN.	ALUMINUM	SEMI DUTY CLOSER, AMERICAN DEVICE SERIES - 6301 OR LCN 4021	KEYED LOCK	ROOM SIGN
101	PLASTIC LAMINATE COVERED FLUSH DOOR WITH ADJUSTABLE ALUMINUM FRAME, USE "A" SERIES 500 AS LATCH AND "T" ALTERN.	ALUMINUM	SEMI DUTY CLOSER, AMERICAN DEVICE SERIES - 6301 OR LCN 4021	KEYED LOCK	ROOM SIGN
102	PLASTIC LAMINATE COVERED FLUSH DOOR WITH ADJUSTABLE ALUMINUM FRAME, USE "A" SERIES 500 AS LATCH AND "T" ALTERN.	ALUMINUM	SEMI DUTY CLOSER, AMERICAN DEVICE SERIES - 6301 OR LCN 4021	KEYED LOCK	ROOM SIGN
103	PLASTIC LAMINATE COVERED FLUSH DOOR WITH ADJUSTABLE ALUMINUM FRAME, USE "A" SERIES 500 AS LATCH AND "T" ALTERN.	ALUMINUM	SEMI DUTY CLOSER, AMERICAN DEVICE SERIES - 6301 OR LCN 4021	KEYED LOCK	ROOM SIGN
104	PLASTIC LAMINATE COVERED FLUSH DOOR WITH ADJUSTABLE ALUMINUM FRAME, USE "A" SERIES 500 AS LATCH AND "T" ALTERN.	ALUMINUM	SEMI DUTY CLOSER, AMERICAN DEVICE SERIES - 6301 OR LCN 4021	KEYED LOCK	ROOM SIGN
105	PLASTIC LAMINATE COVERED FLUSH DOOR WITH ADJUSTABLE ALUMINUM FRAME, USE "A" SERIES 500 AS LATCH AND "T" ALTERN.	ALUMINUM	SEMI DUTY CLOSER, AMERICAN DEVICE SERIES - 6301 OR LCN 4021	KEYED LOCK	ROOM SIGN
106	PLASTIC LAMINATE COVERED FLUSH DOOR WITH ADJUSTABLE ALUMINUM FRAME, USE "A" SERIES 500 AS LATCH AND "T" ALTERN.	ALUMINUM	SEMI DUTY CLOSER, AMERICAN DEVICE SERIES - 6301 OR LCN 4021	KEYED LOCK	ROOM SIGN
107	PLASTIC LAMINATE COVERED FLUSH DOOR WITH ADJUSTABLE ALUMINUM FRAME, USE "A" SERIES 500 AS LATCH AND "T" ALTERN.	ALUMINUM	SEMI DUTY CLOSER, AMERICAN DEVICE SERIES - 6301 OR LCN 4021	KEYED LOCK	ROOM SIGN
108	PLASTIC LAMINATE COVERED FLUSH DOOR WITH ADJUSTABLE ALUMINUM FRAME, USE "A" SERIES 500 AS LATCH AND "T" ALTERN.	ALUMINUM	SEMI DUTY CLOSER, AMERICAN DEVICE SERIES - 6301 OR LCN 4021	KEYED LOCK	ROOM SIGN
109	PLASTIC LAMINATE COVERED FLUSH DOOR WITH ADJUSTABLE ALUMINUM FRAME, USE "A" SERIES 500 AS LATCH AND "T" ALTERN.	ALUMINUM	SEMI DUTY CLOSER, AMERICAN DEVICE SERIES - 6301 OR LCN 4021	KEYED LOCK	ROOM SIGN
110	PLASTIC LAMINATE COVERED FLUSH DOOR WITH ADJUSTABLE ALUMINUM FRAME, USE "A" SERIES 500 AS LATCH AND "T" ALTERN.	ALUMINUM	SEMI DUTY CLOSER, AMERICAN DEVICE SERIES - 6301 OR LCN 4021	KEYED LOCK	ROOM SIGN
111	PLASTIC LAMINATE COVERED FLUSH DOOR WITH ADJUSTABLE ALUMINUM FRAME, USE "A" SERIES 500 AS LATCH AND "T" ALTERN.	ALUMINUM	SEMI DUTY CLOSER, AMERICAN DEVICE SERIES - 6301 OR LCN 4021	KEYED LOCK	ROOM SIGN
112	PLASTIC LAMINATE COVERED FLUSH DOOR WITH ADJUSTABLE ALUMINUM FRAME, USE "A" SERIES 500 AS LATCH AND "T" ALTERN.	ALUMINUM	SEMI DUTY CLOSER, AMERICAN DEVICE SERIES - 6301 OR LCN 4021	KEYED LOCK	ROOM SIGN
113	PLASTIC LAMINATE COVERED FLUSH DOOR WITH ADJUSTABLE ALUMINUM FRAME, USE "A" SERIES 500 AS LATCH AND "T" ALTERN.	ALUMINUM	SEMI DUTY CLOSER, AMERICAN DEVICE SERIES - 6301 OR LCN 4021	KEYED LOCK	ROOM SIGN



- GENERAL NOTES**
- ALL PARTINGS NOT DIMENSIONED ARE 3/4" WOOD STUDS (METAL STUDS MAY BE USED) ALL DIMENSIONS MUST BE ADJUSTED.
 - PROVIDE BLOCKING AS REQUIRED IN FRAME WALLS.
 - RIGID ROOF INSULATION IS REQUIRED - NOT FOAM.
 - EXTERIOR DIMENSIONS ARE FROM OUT TO OUT OF PLYWOOD SHEATHING.
 - INTERIOR DIMENSIONS ARE FROM FACE TO FACE OF FRAMING.
 - CROSSHATCHED INTERIOR WALLS ROCKITE.
 - STAINLESS STEEL PANELS ON DUR-ROCK SHEATHING BEHIND ALL COOKING EQUIPMENT TO EXTEND BEYOND EDGES OF EQUIPMENT. (BY KITCHEN EQUIPMENT SUPPLIER)

design + inc.
2011 bardstow road Louisville, Kentucky 40205 502-454-5011



Wendy's
OLD FASHIONED HAMBURGERS

Warren Avenue
Portland, Maine

STATE OF KENTUCKY
RECEIVED
JAN 11 2001
N. 2728

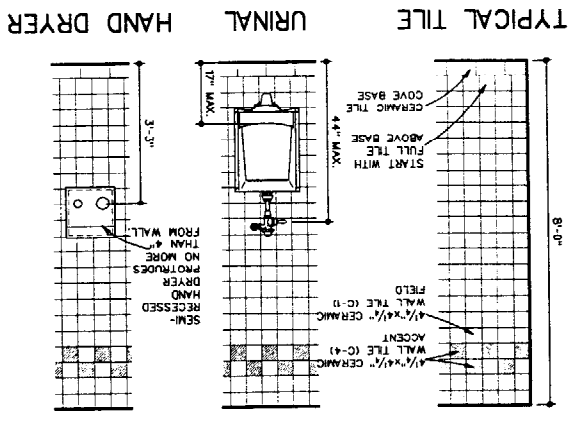
WENDY'S ARCHITECTURE
WARREN AVENUE
PORTLAND, MAINE 04106
PHONE: 603-833-1111
FAX: 603-833-1112

ATTENTION ALL BIDDERS
REFER TO WENDY'S APPROVED
SUPPLIER LIST FOUND ON PAGE
S-4 TO OBTAIN NATIONAL ACCOUNT
PHONE NUMBERS AND CONTACTS.

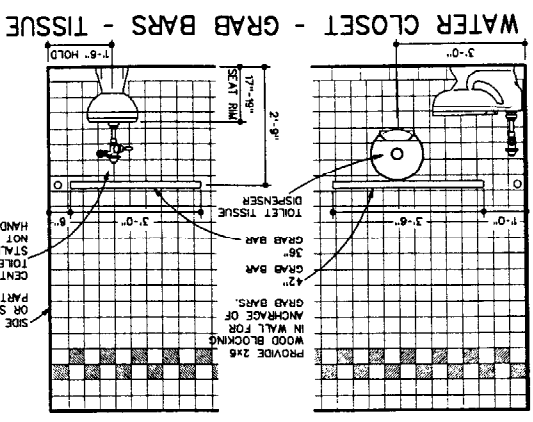
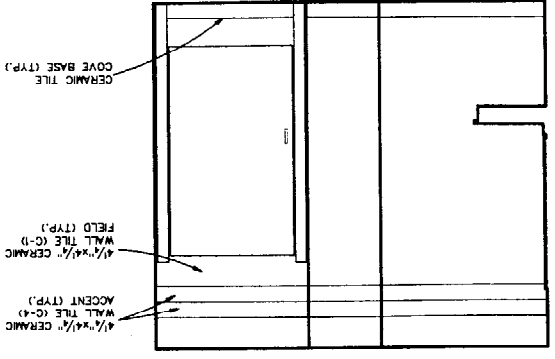
E-2000
PLAN NO/REVISION 22
JOB NO. 2001-058
SHEET NO. 4

SCALE: 1/4" = 1'-0"

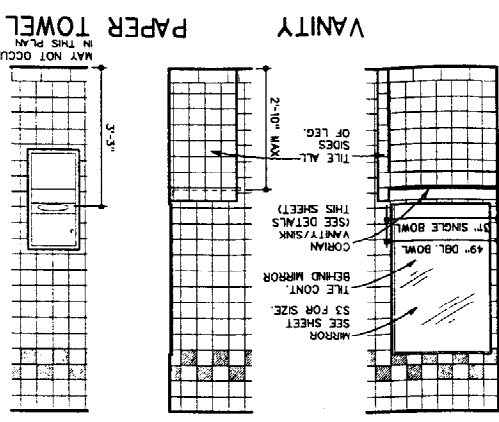
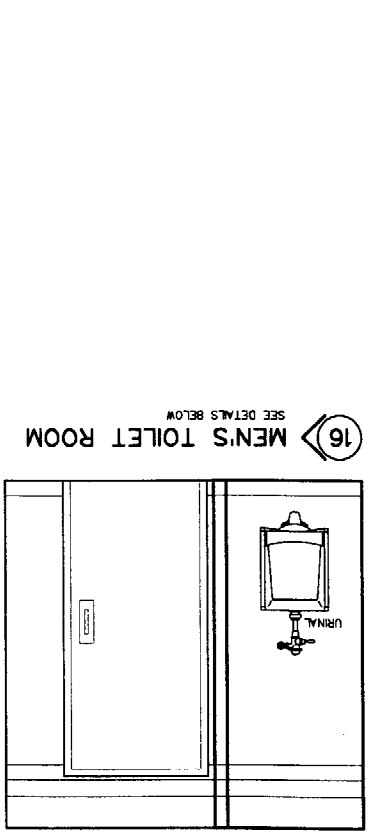
DRAWN	KB	1/21/02
CHECK	KB	1/21/02
REV. #1		
REV. #2		
REV. #3		
PLOT	KB	1/21/02
PLOT		



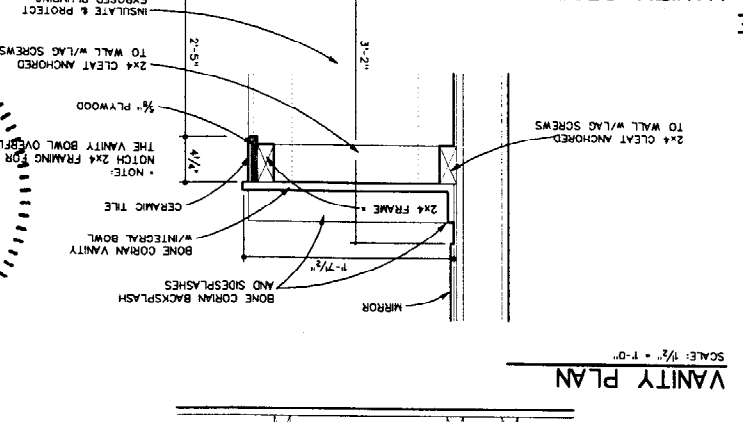
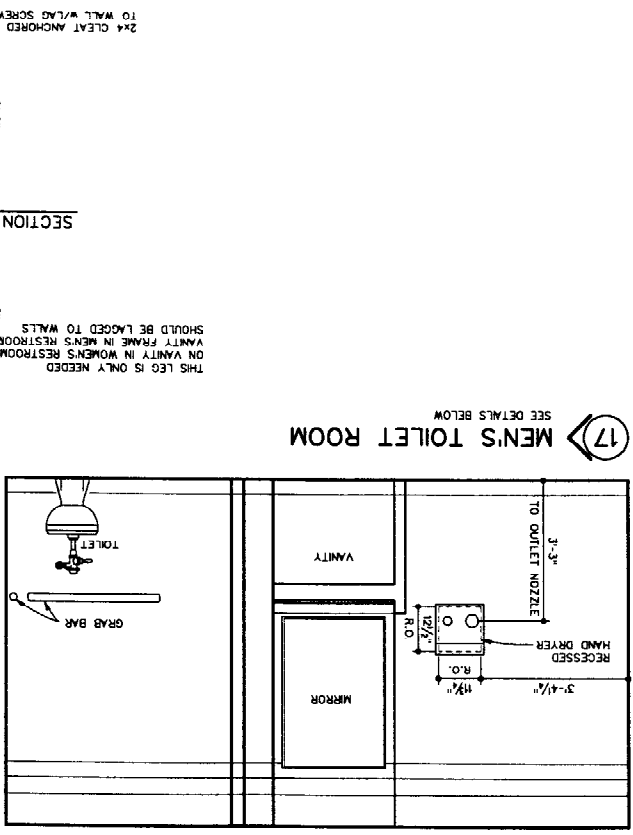
18 MEN'S TOILET ROOM
SEE DETAILS BELOW



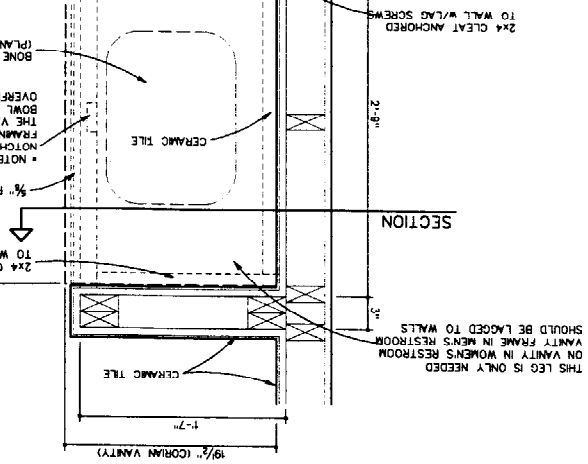
16 MEN'S TOILET ROOM
SEE DETAILS BELOW



17 MEN'S TOILET ROOM
SEE DETAILS BELOW

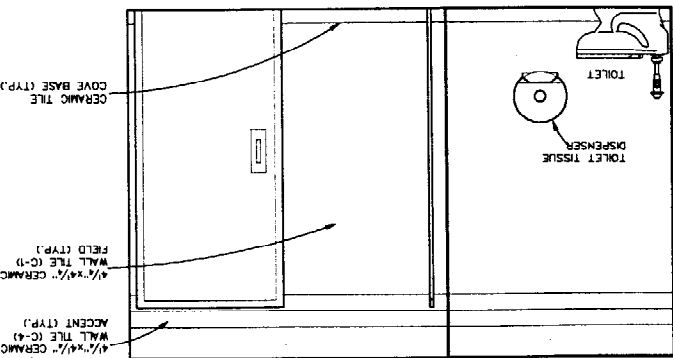


14 WOMEN'S TOILET ROOM
SEE DETAILS BELOW

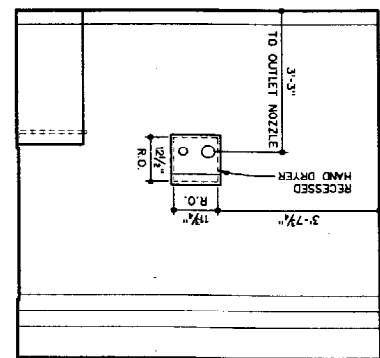


ATTENTION ALL BIDDERS
REFER TO WENDY'S APPROVED
SUPPLIER LIST (FOUND ON PAGE
S-4) TO OBTAIN NATIONAL ACCOUNT
PHONE NUMBERS AND CONTACTS.

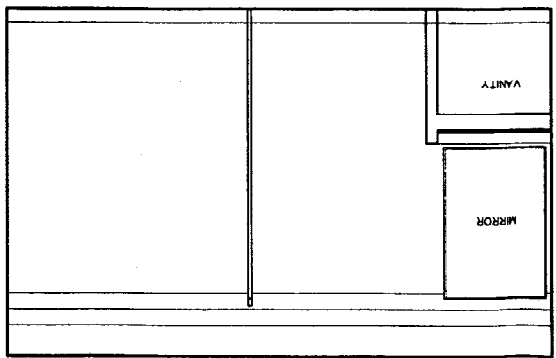
11 WOMEN'S TOILET ROOM
SEE DETAILS BELOW



12 WOMEN'S TOILET ROOM
SEE DETAILS BELOW



13 WOMEN'S TOILET ROOM
SEE DETAILS BELOW

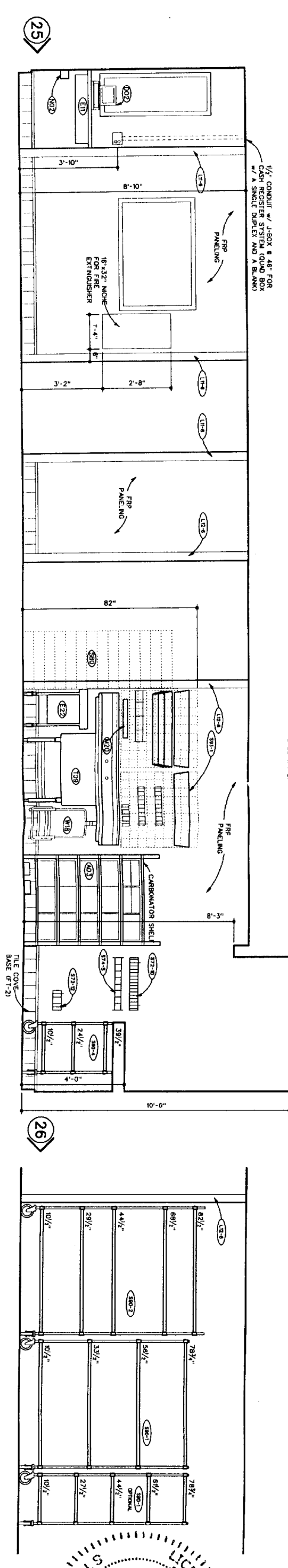
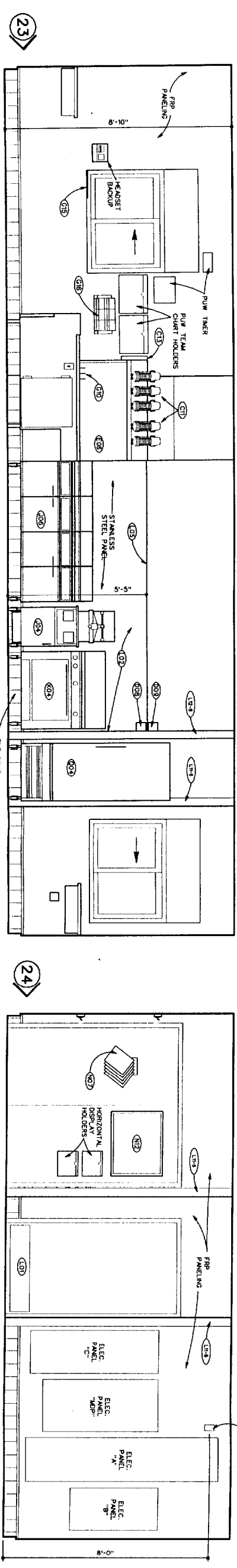
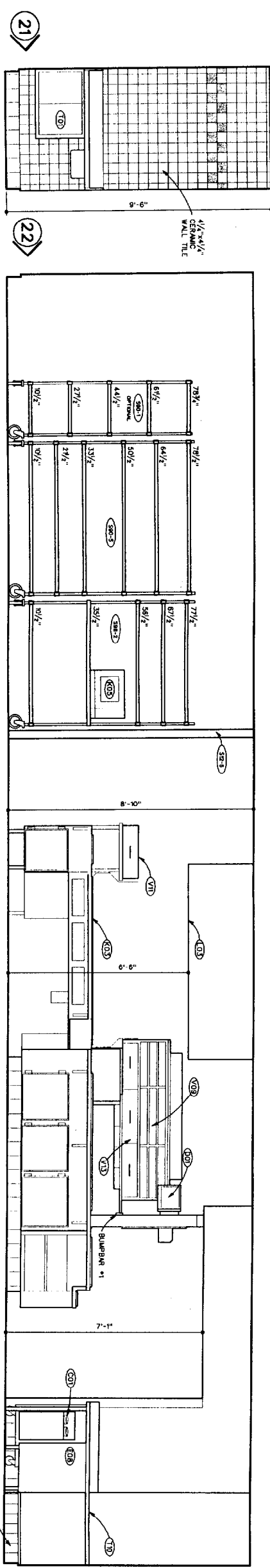
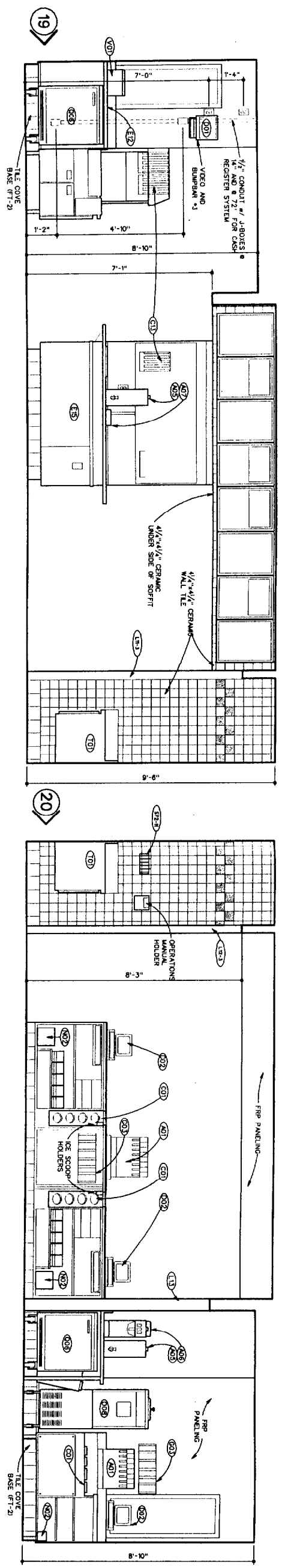


2001-058 6C
JOB No. E-2000
SHEET No. 2
KENNETH MAY
No. 2128
LICENSED ARCHITECT
COLONIAL BROCK BUILDING
2001-058
WENDY'S STORE No.
WENDY'S
WARREN AVENUE
PORTLAND, MAINE

Wendy's
OLD FASHIONED HAMBURGERS
Warren Avenue
Portland, Maine
INTERIOR ELEVATIONS / RESTROOMS

SCALE: 1/4" = 1'-0"	DATE: 1/23/02
DRAWN: KB	BY: KB
CHECK: KB	DATE: 1/23/02
REV. 12	
REV. 13	
PLOT	KB
PLOT	1/23/02

design + inc.
2011 Washington Road
Buxton, Kentucky 40205
502-654-5001



WENDY'S AVENUE
 PORTLAND, MAINE
 WENDY'S STORE NO.
 2001-056
 6D

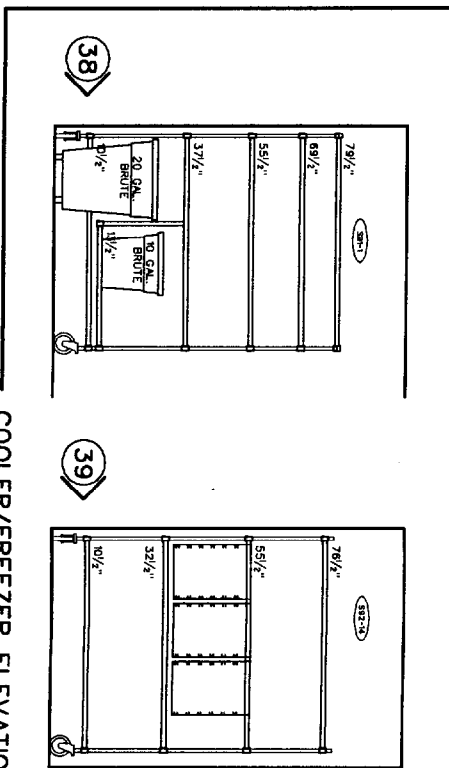
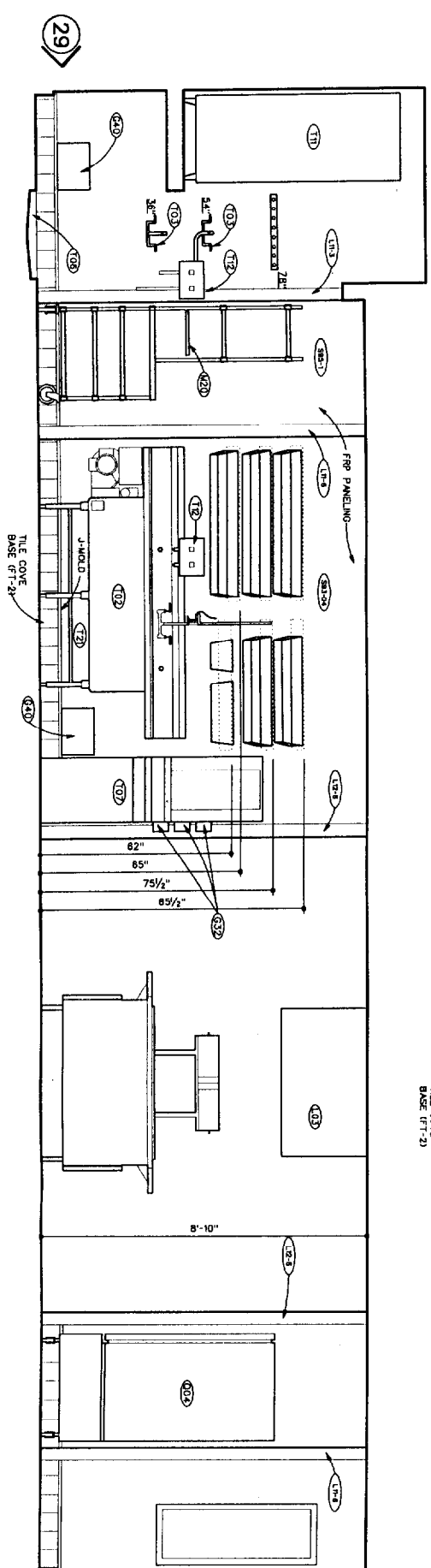
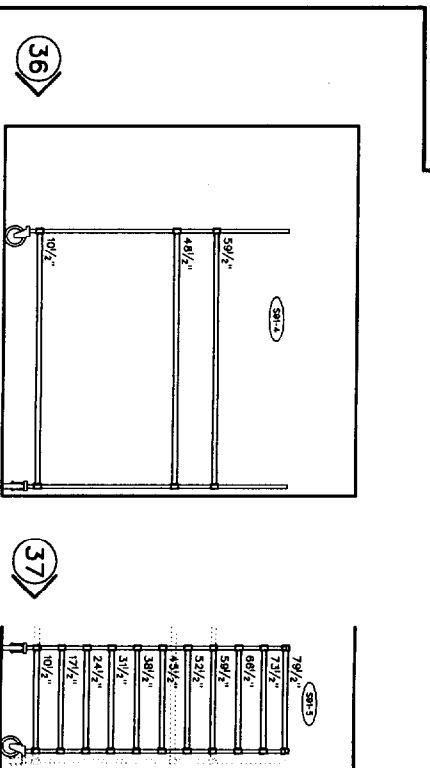
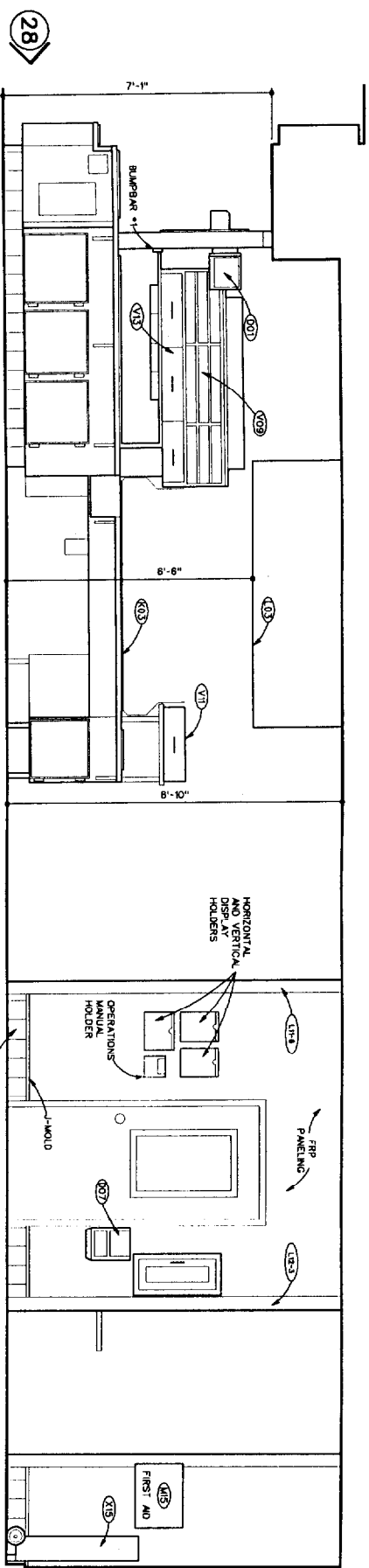
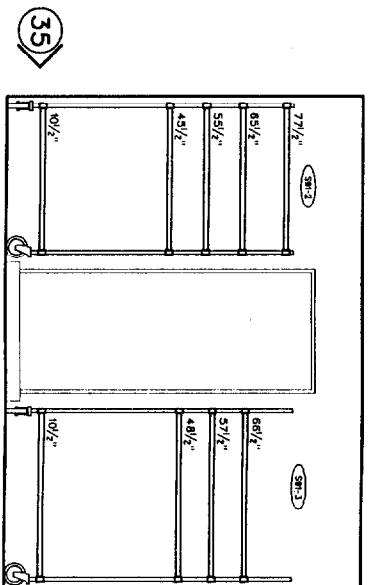
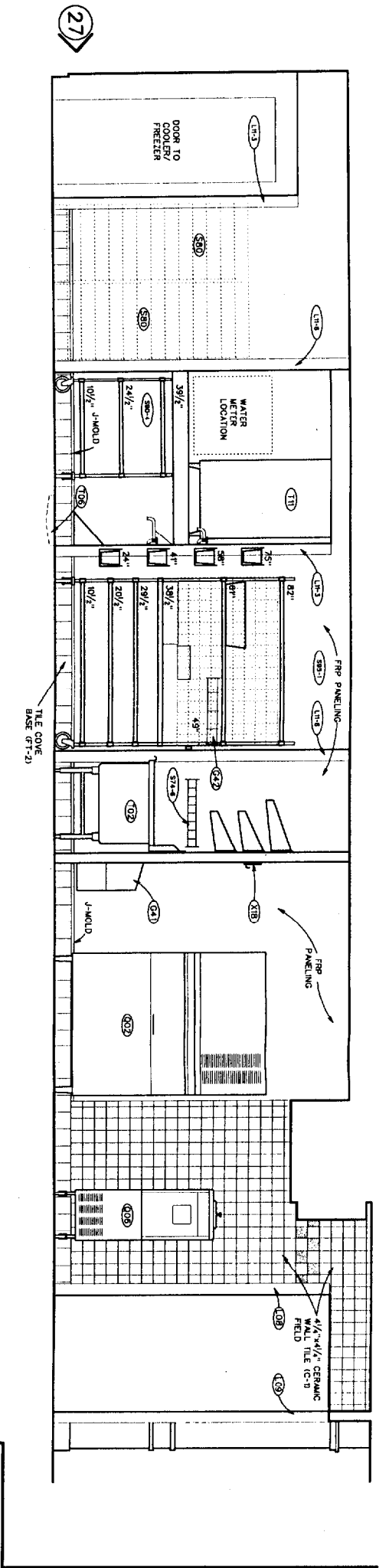
Wendy's
 OLD FASHIONED HAMBURGERS
 INTERIOR ELEVATIONS / BACKROOM

Warren Avenue
 Portland, Maine

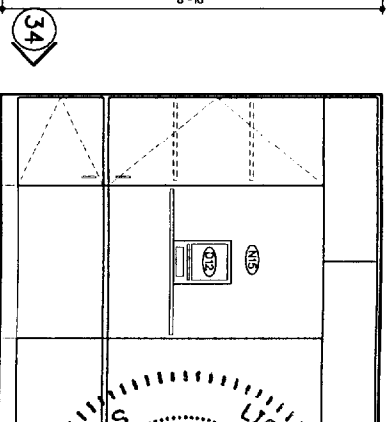
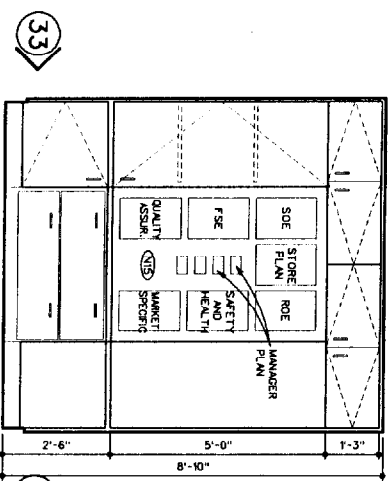
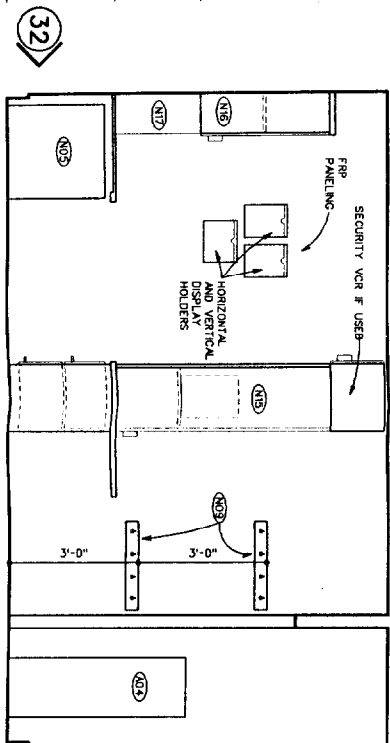
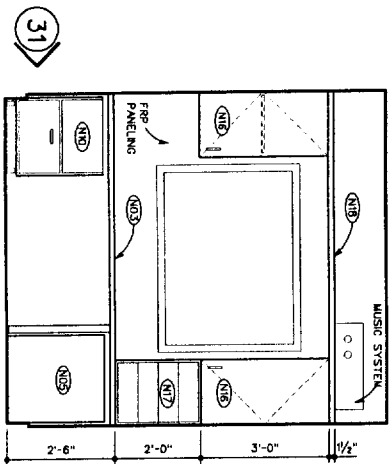
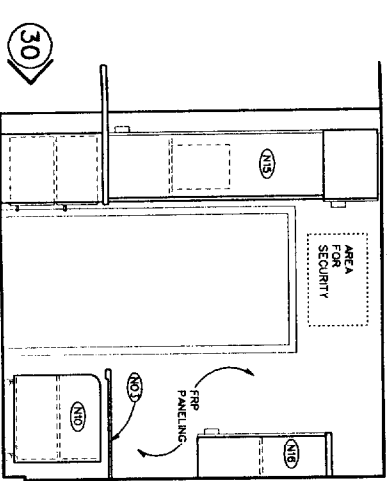
SCALE: 1/2" = 1'-0"	
DRAWN	KB 1/21/02
CHECK	KB 1/21/02
REV. #1	
REV. #2	
REV. #3	
PLOT	KB 1/21/02
PLOT	

design +, inc.
 2811 bardstowm road Louisville, kentucky 40205 502-454-5011

12.233



COOLER/FREEZER ELEVATIONS



Wendy's
 OLD FASHIONED HAMBURGERS
 INTERIOR ELEVATIONS / BACKROOM

Warren Avenue
 Portland, Maine

SCALE: 1/2" = 1'-0"

DRAWN	KB	1/21/02
CHECK	KB	1/21/02
REV. #1		
REV. #2		
REV. #3		
PLOT	KB	1/21/02
PLOT		
PLOT		

design + inc.
 2011 bardstow road Louisville, Kentucky 40205 502-454-5011

WENDY'S
 WARREN AVENUE
 PORTLAND, MAINE
 WENDY'S STORE NO.
 2001-056
 2001-056
 SHEET NO.
 6E

DESIGNED BY
 KENNETH BROWN
 NO. 2728

DATE
 1/21/02

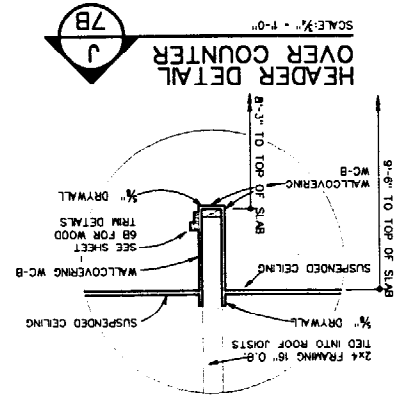
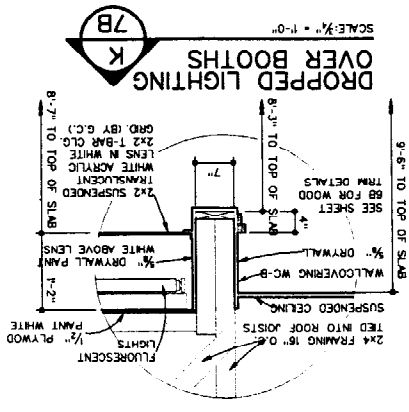
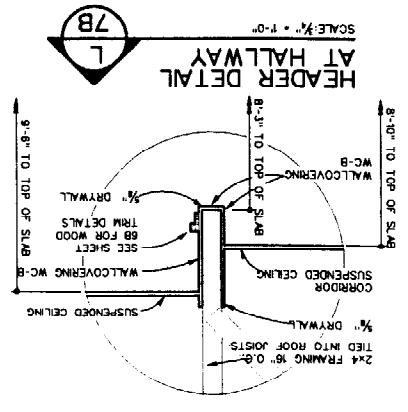
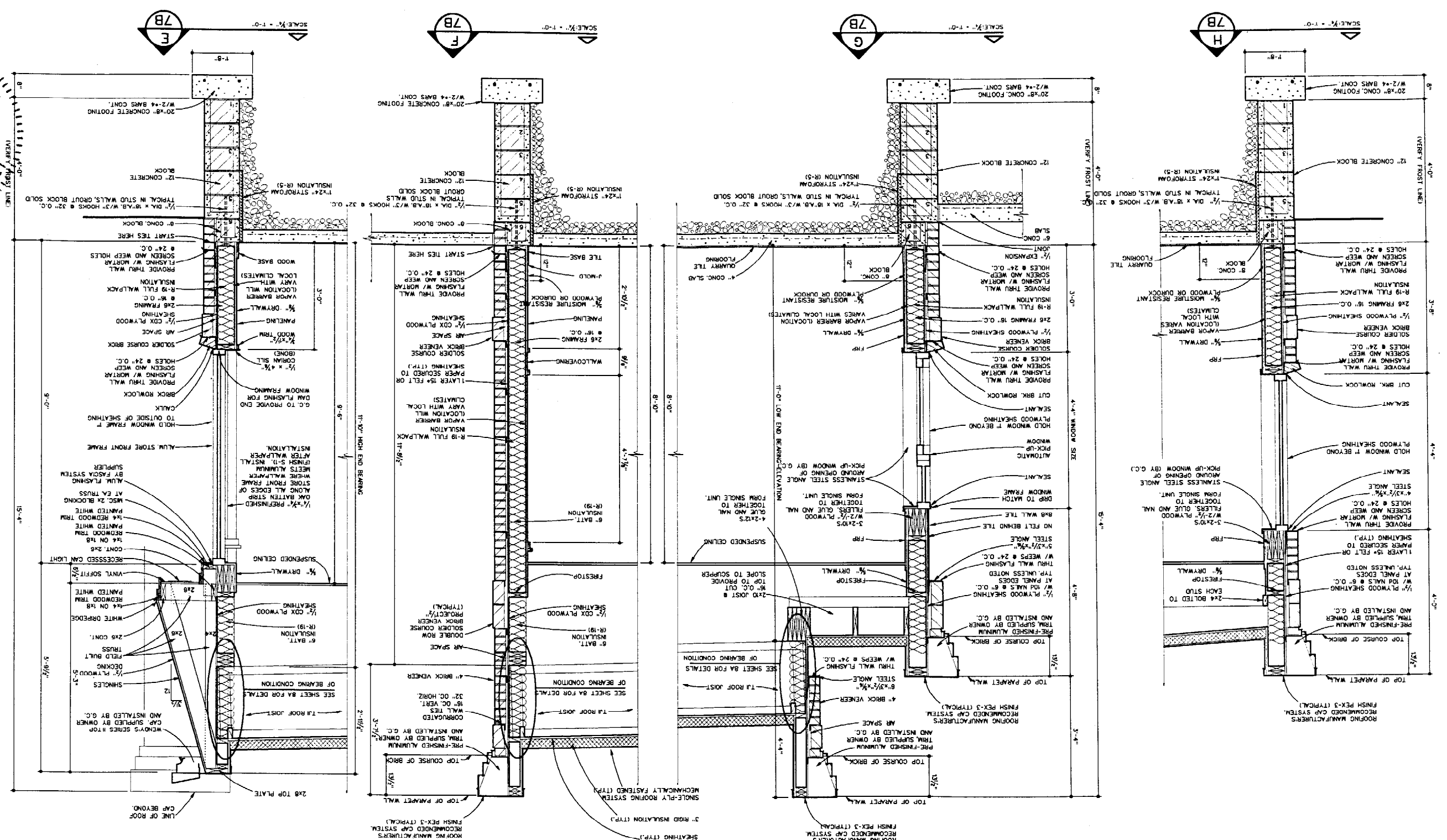
REVISION
 E-2000

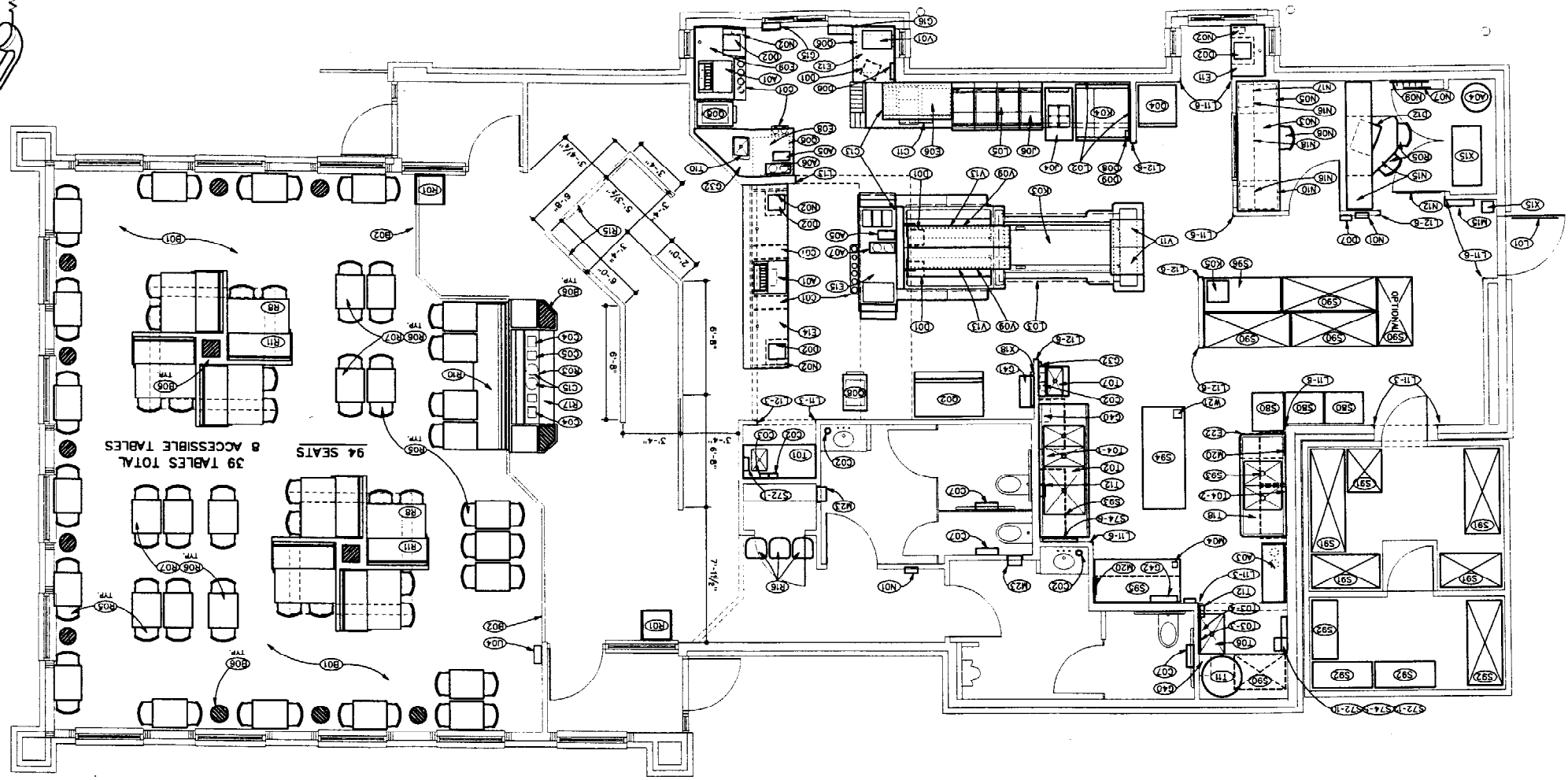
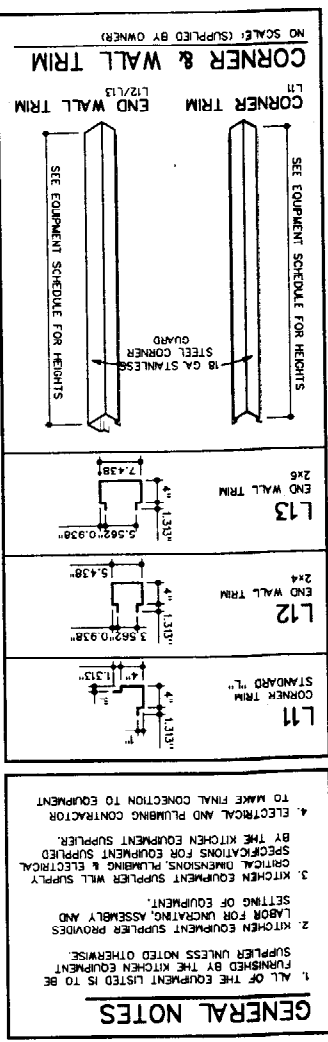
Wendy's
 OLD FASHIONED HAMBURGERS
 Warren Avenue
 Portland, Maine

SCALE: 3/8" = 1'-0"	DRAWN	WB	1/21/02
	CHECK	NB	1/21/02
	REV. 1		
	REV. 2		
	REV. 3		
	PLOT	NB	1/21/02
	PLOT		

design + inc.
 2011 Washington Road
 Orono, ME 04475
 502-454-5011

ATTENTION ALL BIDDERS
 REFER TO WENDY'S APPROVED
 SUPPLIER LIST (FOUND ON PAGE
 S-4) TO OBTAIN NATIONAL ACCOUNT
 PHONE NUMBERS AND CONTACTS.





MARK	EQUIPMENT NUMBER	DESCRIPTION OF EQUIPMENT	REMARKS	FURNISHED BY	MARK	EQUIPMENT NUMBER	DESCRIPTION OF EQUIPMENT	REMARKS	FURNISHED BY
001	001	DRINK TOWER 23 X 23		001	001	DRINK TOWER 23 X 23		001	001
002	002	BAO N BOX RACK		002	002	BAO N BOX RACK		002	002
003	003	BLK CO2 TANK		003	003	BLK CO2 TANK		003	003
004	004	ON SHELF 48" AFF		004	004	ON SHELF 48" AFF		004	004
005	005	ICED TEA DISPENSER		005	005	ICED TEA DISPENSER		005	005
006	006	COFFEE BREWER		006	006	COFFEE BREWER		006	006
007	007	COFFEE WARMER		007	007	COFFEE WARMER		007	007
008	008	CHEST		008	008	CHEST		008	008
009	009	CARBET/ITL TRANSITION STRIP		009	009	CARBET/ITL TRANSITION STRIP		009	009
010	010	SILK PLANT PACKAGE		010	010	SILK PLANT PACKAGE		010	010
011	011	CUP DISPENSER		011	011	CUP DISPENSER		011	011
012	012	SOAP DISPENSER		012	012	SOAP DISPENSER		012	012
013	013	TOWEL DISPENSER		013	013	TOWEL DISPENSER		013	013
014	014	MAPPIN DISPENSER		014	014	MAPPIN DISPENSER		014	014
015	015	SOUFLE CUP DISPENSER		015	015	SOUFLE CUP DISPENSER		015	015
016	016	TOILET TISSUE DISPENSER		016	016	TOILET TISSUE DISPENSER		016	016
017	017	FRY CARTON DISPENSER		017	017	FRY CARTON DISPENSER		017	017
018	018	PORTION PACK DISPENSER		018	018	PORTION PACK DISPENSER		018	018
019	019	CONDIMENT PUMP		019	019	CONDIMENT PUMP		019	019
020	020	POS MONITOR		020	020	POS MONITOR		020	020
021	021	POS TERMINAL		021	021	POS TERMINAL		021	021
022	022	WIRELESS HEADSET		022	022	WIRELESS HEADSET		022	022
023	023	TIME CLOCK		023	023	TIME CLOCK		023	023
024	024	MULTI-PRODUCT TIMER		024	024	MULTI-PRODUCT TIMER		024	024
025	025	GRILL TIMER		025	025	GRILL TIMER		025	025
026	026	TV-VCR		026	026	TV-VCR		026	026
027	027	FRAYDRUM CABINET		027	027	FRAYDRUM CABINET		027	027
028	028	COFFEE COUNTER		028	028	COFFEE COUNTER		028	028
029	029	DRIVE-THRU DRINK COUNTER		029	029	DRIVE-THRU DRINK COUNTER		029	029
030	030	CHANGE WINDOW SHELF		030	030	CHANGE WINDOW SHELF		030	030
031	031	DRIVE-THRU ASSEMBLY COUNTER		031	031	DRIVE-THRU ASSEMBLY COUNTER		031	031
032	032	FRONT COUNTER		032	032	FRONT COUNTER		032	032
033	033	COOKCENTER		033	033	COOKCENTER		033	033
034	034	LETITUE CART		034	034	LETITUE CART		034	034
035	035	UNDER 2 COMP PREP SINK		035	035	UNDER 2 COMP PREP SINK		035	035
036	036	OFFICE/TRAINING MODULE		036	036	OFFICE/TRAINING MODULE		036	036
037	037	BULLETIN BOARD		037	037	BULLETIN BOARD		037	037
038	038	OFFICE COMPUTER RACK		038	038	OFFICE COMPUTER RACK		038	038
039	039	COAT RACK		039	039	COAT RACK		039	039
040	040	TRAINING CENTER WALL HOOKS		040	040	TRAINING CENTER WALL HOOKS		040	040
041	041	OFFICE CHAIR		041	041	OFFICE CHAIR		041	041
042	042	MONEY SAFE		042	042	MONEY SAFE		042	042
043	043	OFFICE DESK TOP		043	043	OFFICE DESK TOP		043	043
044	044	CASH DUMP BOX		044	044	CASH DUMP BOX		044	044
045	045	FIRE EXTINGUISHER CABINET		045	045	FIRE EXTINGUISHER CABINET		045	045
046	046	SEE SHEET 15A FOR MORE INFO.		046	046	SEE SHEET 15A FOR MORE INFO.		046	046
047	047	FREEZER STORAGE UNIT		047	047	FREEZER STORAGE UNIT		047	047
048	048	COOLER STORAGE UNIT		048	048	COOLER STORAGE UNIT		048	048
049	049	BUN RACKS		049	049	BUN RACKS		049	049
050	050	CLEANING BRUSH HOOKS		050	050	CLEANING BRUSH HOOKS		050	050
051	051	FLOOR TOOL HOOKS		051	051	FLOOR TOOL HOOKS		051	051
052	052	HAND DRYER		052	052	HAND DRYER		052	052
053	053	CAM OPENER		053	053	CAM OPENER		053	053
054	054	SPRAY BOTTLE RACK FOR DINING ROOM		054	054	SPRAY BOTTLE RACK FOR DINING ROOM		054	054
055	055	HYDRORAMER RACK		055	055	HYDRORAMER RACK		055	055
056	056	2X4 UNIT IS OPTIONAL		056	056	2X4 UNIT IS OPTIONAL		056	056
057	057	TRAY WASH SINK UNIT		057	057	TRAY WASH SINK UNIT		057	057
058	058	POWER SOAK (3 COMP) SINK		058	058	POWER SOAK (3 COMP) SINK		058	058
059	059	FAUCET - SERVICE SINK		059	059	FAUCET - SERVICE SINK		059	059
060	060	BREAK/BURN WORK STATION		060	060	BREAK/BURN WORK STATION		060	060
061	061	CHALK BOARD		061	061	CHALK BOARD		061	061
062	062	30" X 72" WORKTABLE		062	062	30" X 72" WORKTABLE		062	062
063	063	SINK MODULE		063	063	SINK MODULE		063	063
064	064	FREEZER STORAGE UNIT		064	064	FREEZER STORAGE UNIT		064	064
065	065	COOLER STORAGE UNIT		065	065	COOLER STORAGE UNIT		065	065
066	066	BUN RACKS		066	066	BUN RACKS		066	066
067	067	CLEANING BRUSH HOOKS		067	067	CLEANING BRUSH HOOKS		067	067
068	068	FLOOR TOOL HOOKS		068	068	FLOOR TOOL HOOKS		068	068
069	069	HAND DRYER		069	069	HAND DRYER		069	069
070	070	CAM OPENER		070	070	CAM OPENER		070	070
071	071	SPRAY BOTTLE RACK FOR KITCHEN		071	071	SPRAY BOTTLE RACK FOR KITCHEN		071	071
072	072	HYDRORAMER RACK		072	072	HYDRORAMER RACK		072	072
073	073	2X4 UNIT IS OPTIONAL		073	073	2X4 UNIT IS OPTIONAL		073	073
074	074	TRAY WASH SINK UNIT		074	074	TRAY WASH SINK UNIT		074	074
075	075	POWER SOAK (3 COMP) SINK		075	075	POWER SOAK (3 COMP) SINK		075	075
076	076	FAUCET - SERVICE SINK		076	076	FAUCET - SERVICE SINK		076	076
077	077	BREAK/BURN WORK STATION		077	077	BREAK/BURN WORK STATION		077	077
078	078	CHALK BOARD		078	078	CHALK BOARD		078	078
079									

Wendy's
 OLD FASHIONED HAMBURGERS
 Warren Avenue
 Portland, Maine

SCALE	1/2" = 1'-0"
DRAWN	KB
CHECK	1/21/02
REV. #1	
REV. #2	
REV. #3	
DATE	1/21/02
PLT	

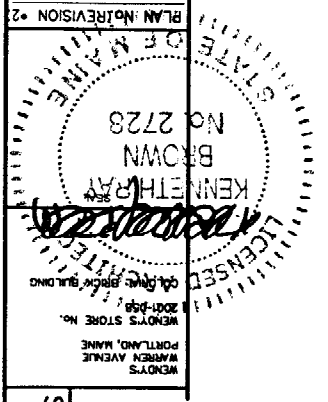
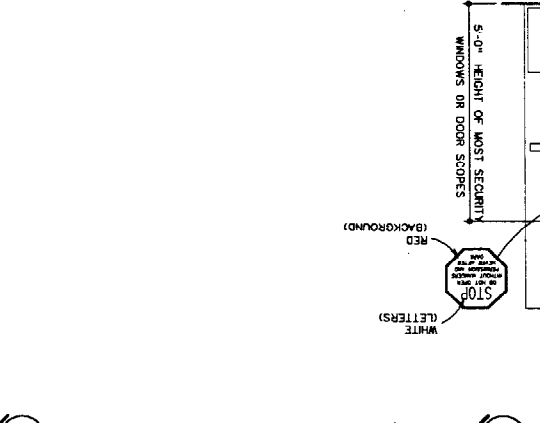
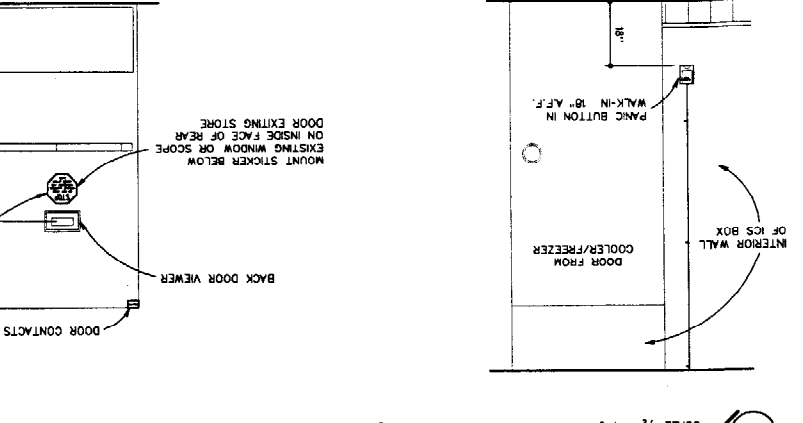
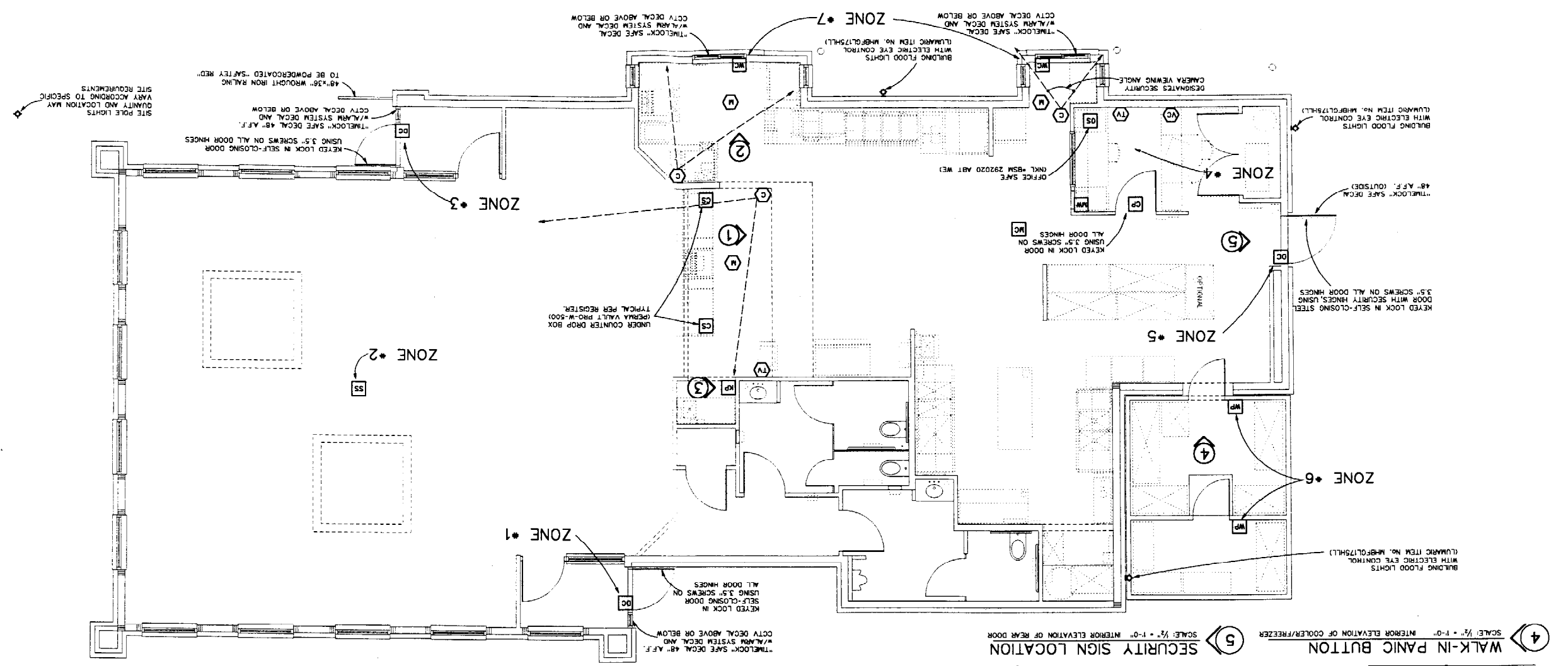
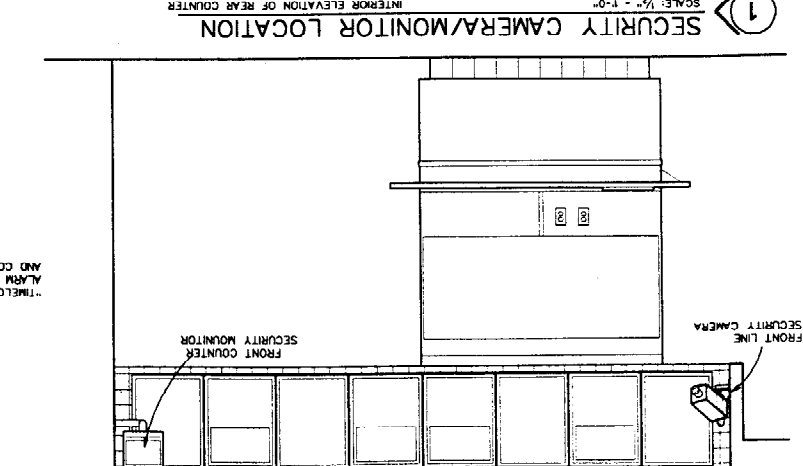
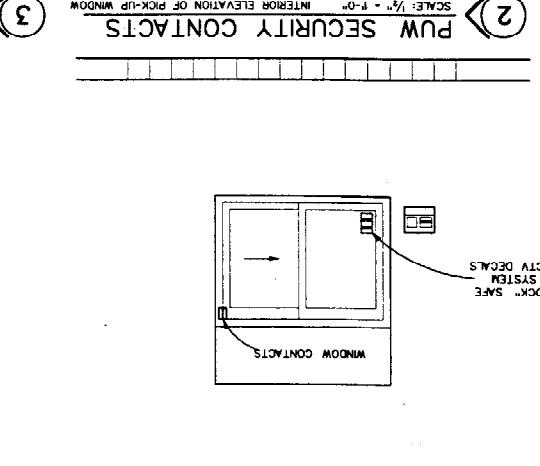
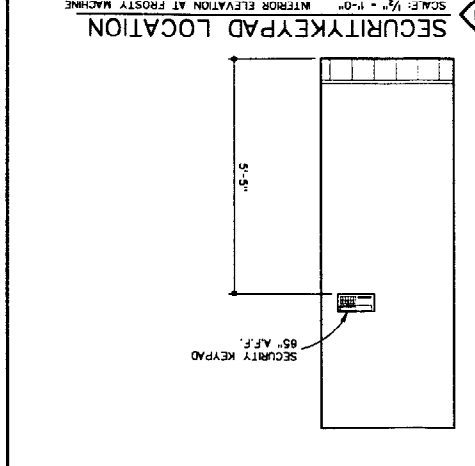
design + inc.
 2011 Washington Road
 Bangor, Maine 04205 502-674-5011

MARK	ITEM	QUANTITY	LOCATION	REMARKS
DC	DOOR CONTACTS	1	IN FRAME HEAD ON LATCH SIDE OF OPENING	
MC	MOTION DETECTOR (WALL MOUNT)	1	WALL MOUNT 8" BELOW CEILING	
MC	MOTION DETECTOR (CEILING MOUNT)	1	CEILING MOUNT	
WP	WALK-IN PANIC BUTTON	1	WALL MOUNT 12 TO 18" A.F.F.	
WC	WINDOW CONTACTS	1	UPPER JAMB SIDE OF OPERABLE LEAF	
MP	KEYPAD	1	WALL MOUNT 85" A.F.F. OR MOUNTED ACCORDING TO LOCAL OPERATIONS PERSONNEL	
CP	CONTROL PANEL	1	WALL MOUNT ABOVE DOOR OR MOUNTED ACCORDING TO LOCAL OPERATIONS PERSONNEL	
SS	SIREN / STROBE	1	SIREN / STROBE STRIKE SURFACE MOUNTED ON CEILING	
OS	OFFICE SAFE	1	SEE SAFE INSTRUCTIONS	
CS	COUNTER SAFE	1	BOLTED DOWN UNDER REGISTER(S)	
BL	BUILDING FLOOD LIGHTS	1	MOUNTED ON ROOF AT TOP OF WALL	
VL	VCR'S	1	MOUNTED INSIDE UPPER CABINET IN MANAGERS OFFICE. ADDITIONAL NO AC POWER REQUIRED	

MARK	ITEM	QUANTITY	LOCATION	REMARKS
MC	MOTION DETECTOR (WALL MOUNT)	1	WALL MOUNT 8" BELOW CEILING	
MC	MOTION DETECTOR (CEILING MOUNT)	1	CEILING MOUNT	
WP	WALK-IN PANIC BUTTON	1	WALL MOUNT 12 TO 18" A.F.F.	
WC	WINDOW CONTACTS	1	UPPER JAMB SIDE OF OPERABLE LEAF	
MP	KEYPAD	1	WALL MOUNT 85" A.F.F. OR MOUNTED ACCORDING TO LOCAL OPERATIONS PERSONNEL	
CP	CONTROL PANEL	1	WALL MOUNT ABOVE DOOR OR MOUNTED ACCORDING TO LOCAL OPERATIONS PERSONNEL	
SS	SIREN / STROBE	1	SIREN / STROBE STRIKE SURFACE MOUNTED ON CEILING	
OS	OFFICE SAFE	1	SEE SAFE INSTRUCTIONS	
CS	COUNTER SAFE	1	BOLTED DOWN UNDER REGISTER(S)	
BL	BUILDING FLOOD LIGHTS	1	MOUNTED ON ROOF AT TOP OF WALL	
VL	VCR'S	1	MOUNTED INSIDE UPPER CABINET IN MANAGERS OFFICE. ADDITIONAL NO AC POWER REQUIRED	

SAFE INSTRUCTIONS

1. THE SAFE IS PROVIDED WITH A 3/4" DIAMETER ANCHOR ASSEMBLY FOR FIELD INSTALLATION.
2. SAFE ANCHORING TO BE DONE BY LOCKSMITH.
3. THE SAFE IS TO BE ANCHORED TO THE FLOOR TO MAXIMIZE SECURITY.
4. FOR PROPER INSTALLATION FOLLOW STEPS BELOW:
 - A. MARK THE AREA DESIRED FOR ANCHORING.
 - B. DRILL INTO FLOOR WITH A 1" DIAMETER MASONRY BIT 1" DEEP.
 - C. DIS-ASSEMBLY THE ANCHORING BOLT/WASHER FROM THE LEAD SHIELD ASSEMBLY.
 - D. TAP THE LEAD SHIELD ANCHOR IN THE FLOOR FLUSH WITH THE SURFACE.
 - E. LOCATE AND ALIGN THE HOLE IN THE BOTTOM OF THE SAFE WITH THE LEAD SHIELD ANCHOR IN THE FLOOR.
 - F. INSTALL THE FLAT WASHER/BOLT THROUGH THE BOTTOM OF THE SAFE AND TIGHTEN SECURELY.
5. WILL SMELL. WEDGING THE ANCHOR TO THE FLOOR BY DOING SO, THE SLEEVE ON THE ANCHOR ASSEMBLY WILL BE BROKEN.



INTERIOR FINISH SCHEDULE

ITEM	DESCRIPTION	QTY	UNIT	EST.	INST.	FIN.	PAINT	GLASS	OTHER
CE-1	CEILING TILE								
DRY-WL	DRYWALL								
FL-1	FLOORING								
W-1	WALLS								
MIS-1	MISCELLANEOUS								
L-1	LIGHTING								

INTERIOR FINISH SCHEDULE

ITEM	DESCRIPTION	QTY	UNIT	EST.	INST.	FIN.	PAINT	GLASS	OTHER
CE-1	CEILING TILE								
DRY-WL	DRYWALL								
FL-1	FLOORING								
W-1	WALLS								
MIS-1	MISCELLANEOUS								
L-1	LIGHTING								

INTERIOR FINISH SCHEDULE

ITEM	DESCRIPTION	QTY	UNIT	EST.	INST.	FIN.	PAINT	GLASS	OTHER
CE-1	CEILING TILE								
DRY-WL	DRYWALL								
FL-1	FLOORING								
W-1	WALLS								
MIS-1	MISCELLANEOUS								
L-1	LIGHTING								

COMMON FINISHES

ITEM	DESCRIPTION	QTY	UNIT	EST.	INST.	FIN.	PAINT	GLASS	OTHER
SS-1	SOLID SURFACES								
PL-1	PLASTER								
PL-2	PLASTER								
PL-3	PLASTER								
PL-4	PLASTER								
V-5	WOOD FINISHES								

INTERIOR FINISH SCHEDULE

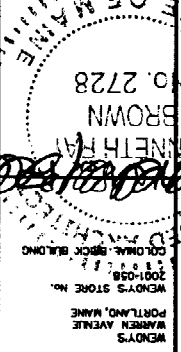
ITEM	DESCRIPTION	QTY	UNIT	EST.	INST.	FIN.	PAINT	GLASS	OTHER
CE-1	CEILING TILE								
DRY-WL	DRYWALL								
FL-1	FLOORING								
W-1	WALLS								
MIS-1	MISCELLANEOUS								
L-1	LIGHTING								

EXTERIOR FINISH SCHEDULE

ITEM	DESCRIPTION	QTY	UNIT	EST.	INST.	FIN.	PAINT	GLASS	OTHER
BR-1	BRICK								
BR-2	BRICK								
BR-3	BRICK								
BR-4	BRICK								
BR-5	BRICK								
BR-6	BRICK								
BR-7	BRICK								
BR-8	BRICK								
BR-9	BRICK								
BR-10	BRICK								
BR-11	BRICK								
BR-12	BRICK								
BR-13	BRICK								
BR-14	BRICK								
BR-15	BRICK								
BR-16	BRICK								
BR-17	BRICK								
BR-18	BRICK								
BR-19	BRICK								
BR-20	BRICK								
BR-21	BRICK								
BR-22	BRICK								
BR-23	BRICK								
BR-24	BRICK								
BR-25	BRICK								
BR-26	BRICK								
BR-27	BRICK								
BR-28	BRICK								
BR-29	BRICK								
BR-30	BRICK								
BR-31	BRICK								
BR-32	BRICK								
BR-33	BRICK								
BR-34	BRICK								
BR-35	BRICK								
BR-36	BRICK								
BR-37	BRICK								
BR-38	BRICK								
BR-39	BRICK								
BR-40	BRICK								
BR-41	BRICK								
BR-42	BRICK								
BR-43	BRICK								
BR-44	BRICK								
BR-45	BRICK								
BR-46	BRICK								
BR-47	BRICK								
BR-48	BRICK								
BR-49	BRICK								
BR-50	BRICK								
BR-51	BRICK								
BR-52	BRICK								
BR-53	BRICK								
BR-54	BRICK								
BR-55	BRICK								
BR-56	BRICK								
BR-57	BRICK								
BR-58	BRICK								
BR-59	BRICK								
BR-60	BRICK								
BR-61	BRICK								
BR-62	BRICK								
BR-63	BRICK								
BR-64	BRICK								
BR-65	BRICK								
BR-66	BRICK								
BR-67	BRICK								
BR-68	BRICK								
BR-69	BRICK								
BR-70	BRICK								
BR-71	BRICK								
BR-72	BRICK								
BR-73	BRICK								
BR-74	BRICK								
BR-75	BRICK								
BR-76	BRICK								
BR-77	BRICK								
BR-78	BRICK								
BR-79	BRICK								
BR-80	BRICK								
BR-81	BRICK								
BR-82	BRICK								
BR-83	BRICK								
BR-84	BRICK								
BR-85	BRICK								
BR-86	BRICK								
BR-87	BRICK								
BR-88	BRICK								
BR-89	BRICK								
BR-90	BRICK								
BR-91	BRICK								
BR-92	BRICK								
BR-93	BRICK								
BR-94	BRICK								
BR-95	BRICK								
BR-96	BRICK								
BR-97	BRICK								
BR-98	BRICK								
BR-99	BRICK								
BR-100	BRICK								

EXTERIOR FINISH SCHEDULE

ITEM	DESCRIPTION	QTY	UNIT	EST.	INST.	FIN.	PAINT	GLASS	OTHER
BR-1	BRICK								
BR-2	BRICK								
BR-3	BRICK								
BR-4	BRICK								
BR-5	BRICK								
BR-6	BRICK								
BR-7	BRICK								
BR-8	BRICK								
BR-9	BRICK								
BR-10	BRICK								
BR-11	BRICK								
BR-12	BRICK								
BR-13	BRICK								
BR-14	BRICK								
BR-15	BRICK								
BR-16	BRICK								
BR-17	BRICK								
BR-18	BRICK								
BR-19	BRICK								
BR-20	BRICK								
BR-21	BRICK								
BR-22	BRICK								
BR-23	BRICK								
BR-24	BRICK								
BR-25	BRICK								
BR-26	BRICK								
BR-27	BRICK								
BR-28	BRICK								
BR-29	BRICK								
BR-30	BRICK								
BR-31	BRICK								
BR-32	BRICK								
BR-33	BRICK								
BR-34	BRICK								
BR-35	BRICK								
BR-36	BRICK								
BR-37	BRICK								
BR-38	BRICK								
BR-39	BRICK								
BR-40	BRICK								
BR-41	BRICK								
BR-42	BRICK								



Warren Avenue Portland, Maine

Table with columns: SCALE, DRAWING, CHECK, REV, DATE, PLOT.

design + inc. 2001 Bathdown Road Portland, Kentucky 40305 502-654-5011

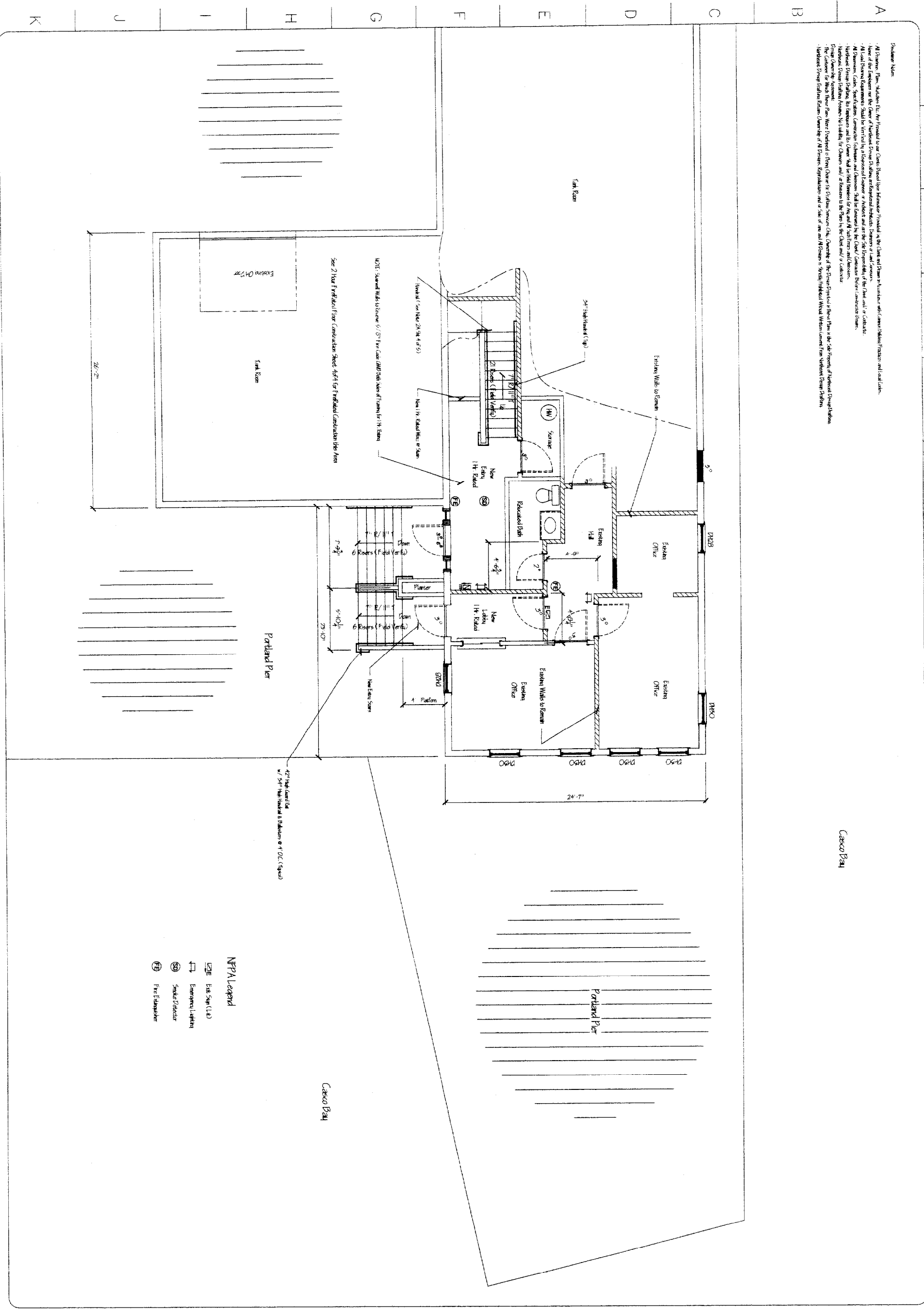
Main table with columns: DIVISION, ITEM, DESCRIPTION, and various technical specifications for electrical and mechanical systems.

Vertical text on the right side of the page, likely a continuation of specifications or notes.

1 2 3 4 5 6 7 8 9 10 11 12 13 14 15

Disclaimer:

- All Drawings, Plans, Specifications, etc. are provided to our Clients, Subcontractors, Permitting Agencies, and Local Authorities of the Engineer or the Owner of the Project. No liability is assumed for any errors or omissions.
- All Drawings, Plans, Specifications, etc. shall be prepared by a Licensed Professional Engineer or Architect and are the property of the Client and/or Contractor.
- All Drawings, Plans, Specifications, etc. shall be prepared by a Licensed Professional Engineer or Architect and are the property of the Client and/or Contractor.
- All Drawings, Plans, Specifications, etc. shall be prepared by a Licensed Professional Engineer or Architect and are the property of the Client and/or Contractor.
- All Drawings, Plans, Specifications, etc. shall be prepared by a Licensed Professional Engineer or Architect and are the property of the Client and/or Contractor.
- All Drawings, Plans, Specifications, etc. shall be prepared by a Licensed Professional Engineer or Architect and are the property of the Client and/or Contractor.
- All Drawings, Plans, Specifications, etc. shall be prepared by a Licensed Professional Engineer or Architect and are the property of the Client and/or Contractor.
- All Drawings, Plans, Specifications, etc. shall be prepared by a Licensed Professional Engineer or Architect and are the property of the Client and/or Contractor.
- All Drawings, Plans, Specifications, etc. shall be prepared by a Licensed Professional Engineer or Architect and are the property of the Client and/or Contractor.
- All Drawings, Plans, Specifications, etc. shall be prepared by a Licensed Professional Engineer or Architect and are the property of the Client and/or Contractor.



Casco Bay

NPPAL Legend

- Existing Structure
- Emergency Egress
- Smoke Detector
- ⊕ Fire Extinguisher

or
999 BOX 72000 NFA 101
M Lomp
DATE 02.01.02
CHECKED MPH
APPROVED 1/4" = 1'-0"
JOB ORDER 012902
DRAWING NO.
012902-3



DWG. TITLE:
First Floor Renovations

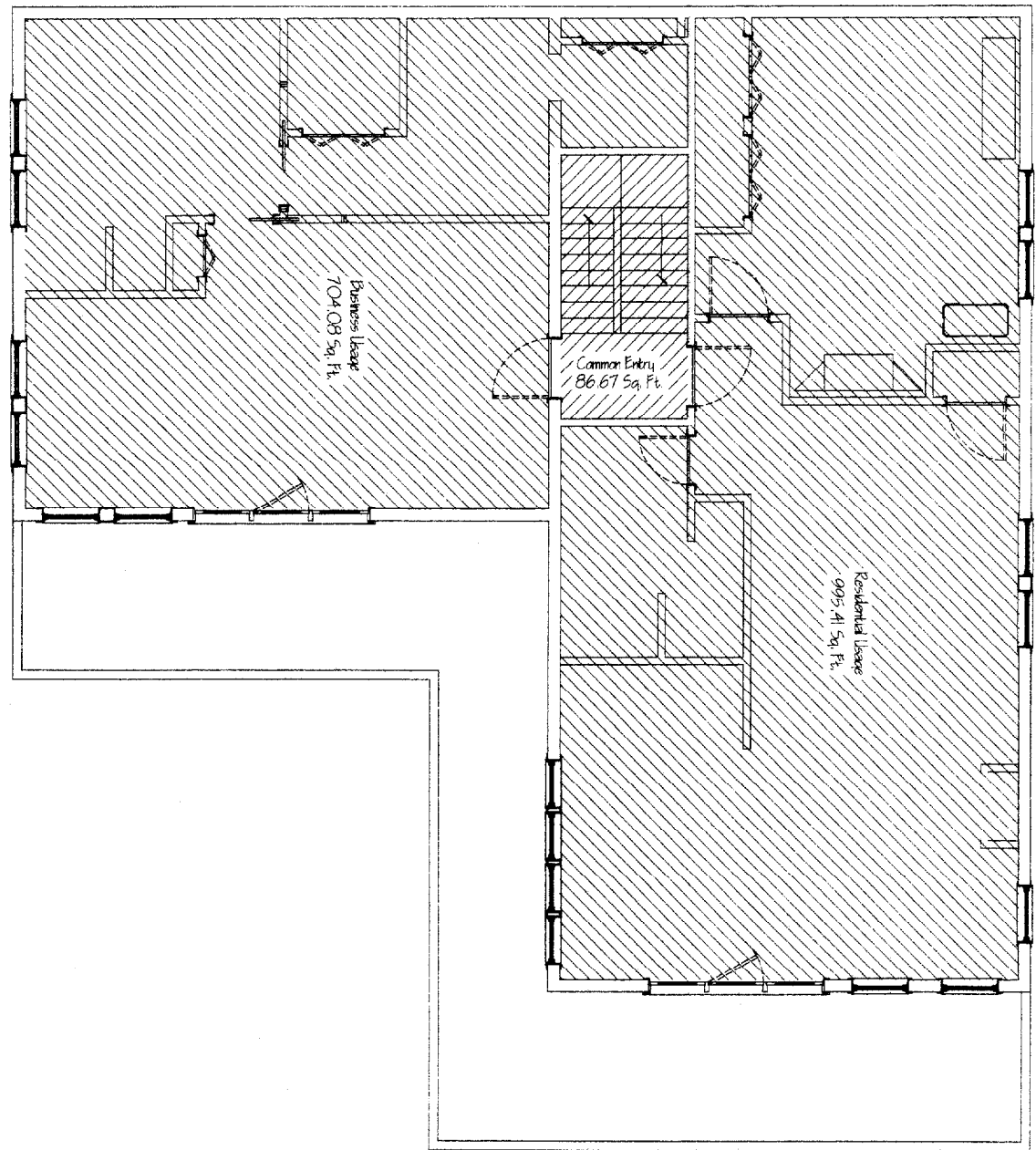
REV.	DESCRIPTION	DATE

PROJECT FOR:
**New Meadows Lobster
Pete & Kathleen McAleney
60 Portland Pier
Portland, Maine 04101**
Phone: 207.775.1612 Fax: 207.874.2456

NORTHEAST DESIGN DRAFTING
DRAFTING EXCELLENCE BACKED BY DESIGN EXPERIENCE
95 Sumac Street Portland, ME 04102 Phone 207.797.7776 Fax 207.878.0069
WWW.NORTHEASTDESIGNDRAFTING.COM

SHEET 3 OF 5

All drawings, plans, sections, etc., are prepared by the drafter under the supervision of the architect. The architect is not responsible for the accuracy of the information provided by the owner. The architect is not responsible for the accuracy of the information provided by the owner. The architect is not responsible for the accuracy of the information provided by the owner.



399 BOCK
 STATE OF MAINE
 LICENSED ARCHITECT
 MICHAEL F. HAYS
 NO. 1724

REV.	DESCRIPTION	DATE

PROJECT FOR:
 New Meadows Lobster
 Pete & Kathleen McAleney
 60 Portland Pier
 Portland, Maine 04101
 Phone: 207.775.1612 Fax: 207.874.2456

NORTHEAST DESIGN DRAFTING
 DRAFTING EXCELLENCE BACKED BY DESIGN EXPERIENCE
 55 Sunac Street, Portland, ME 04103 Phone: 207.797.7716 Fax: 207.878.0065
 WWW.NORTHEASTDESIGNDRAFTING.COM

SHEET 5 OF 5
 012902-5