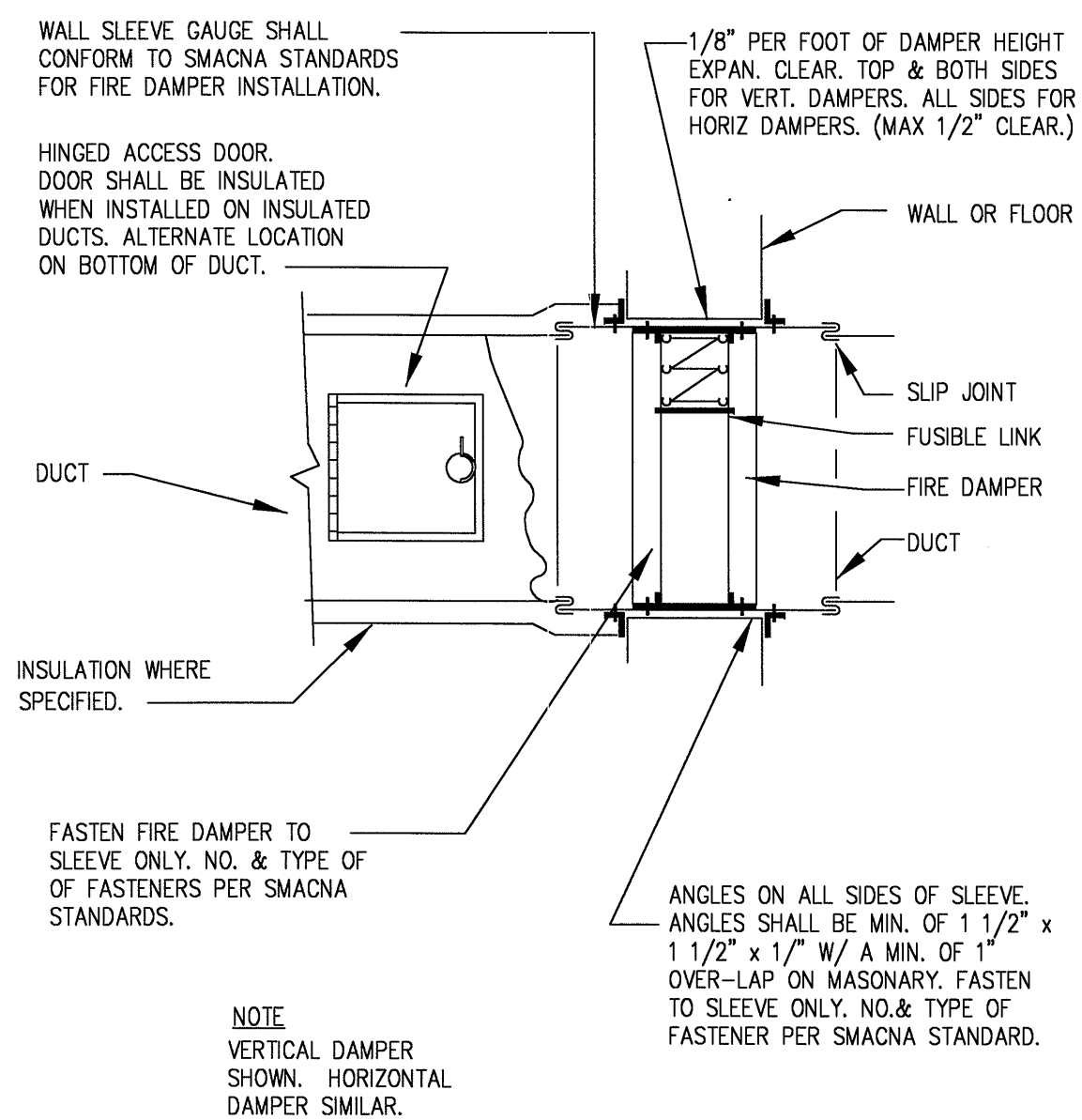
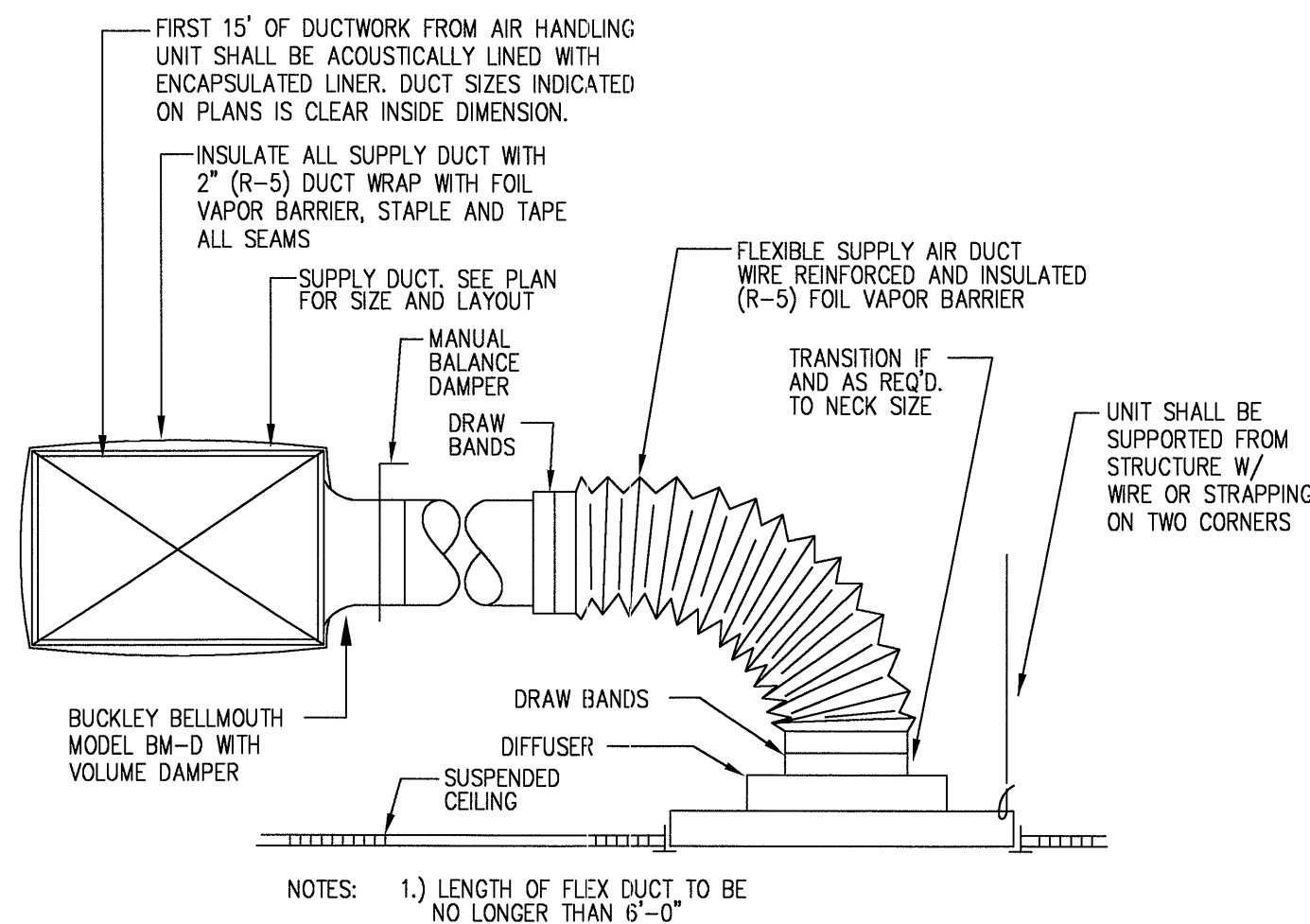


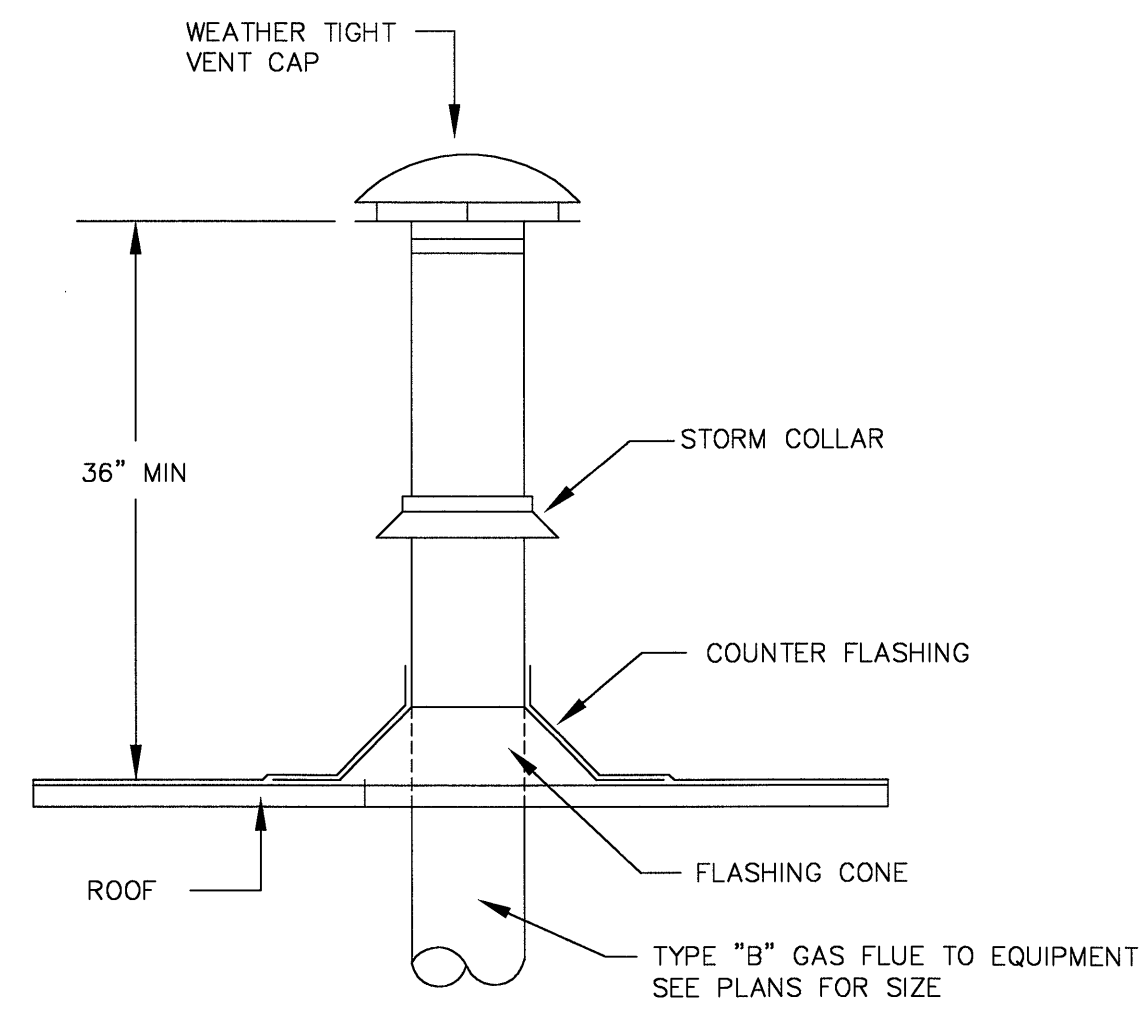
1 45° DUCT TAKE-OFF
NO SCALE



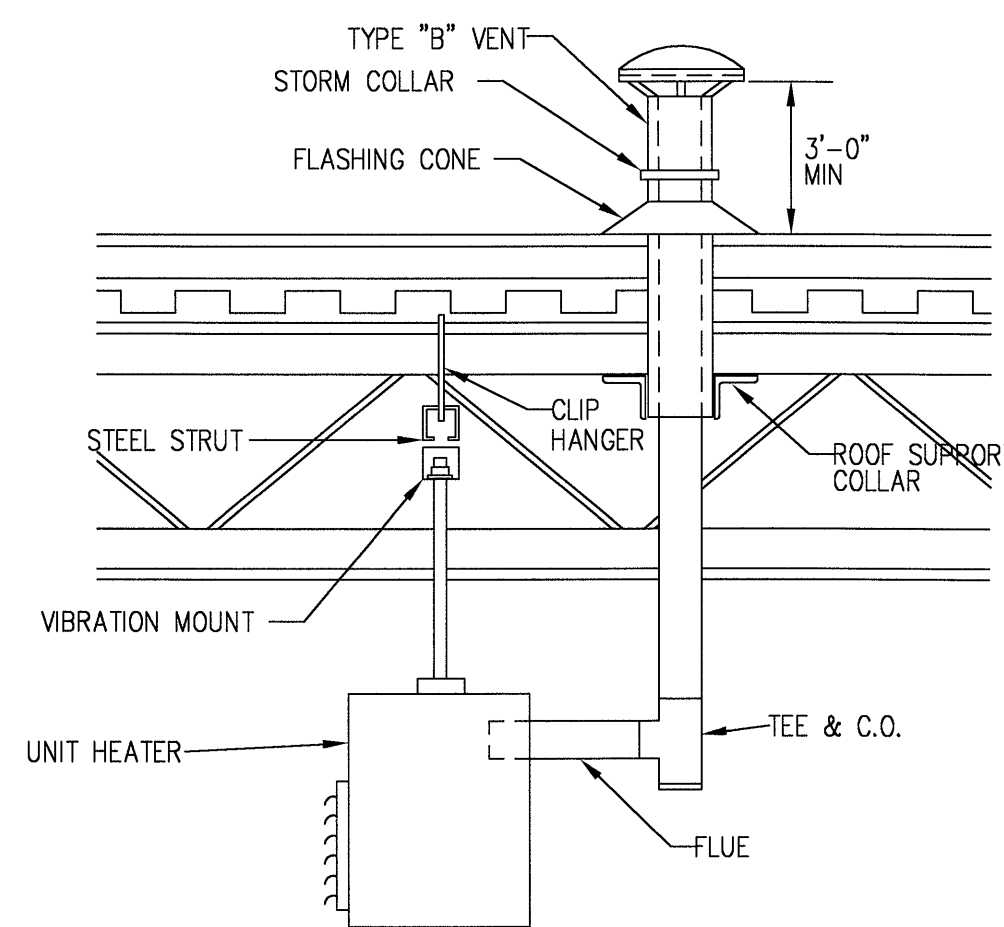
2 Fire Damper Detail
No Scale



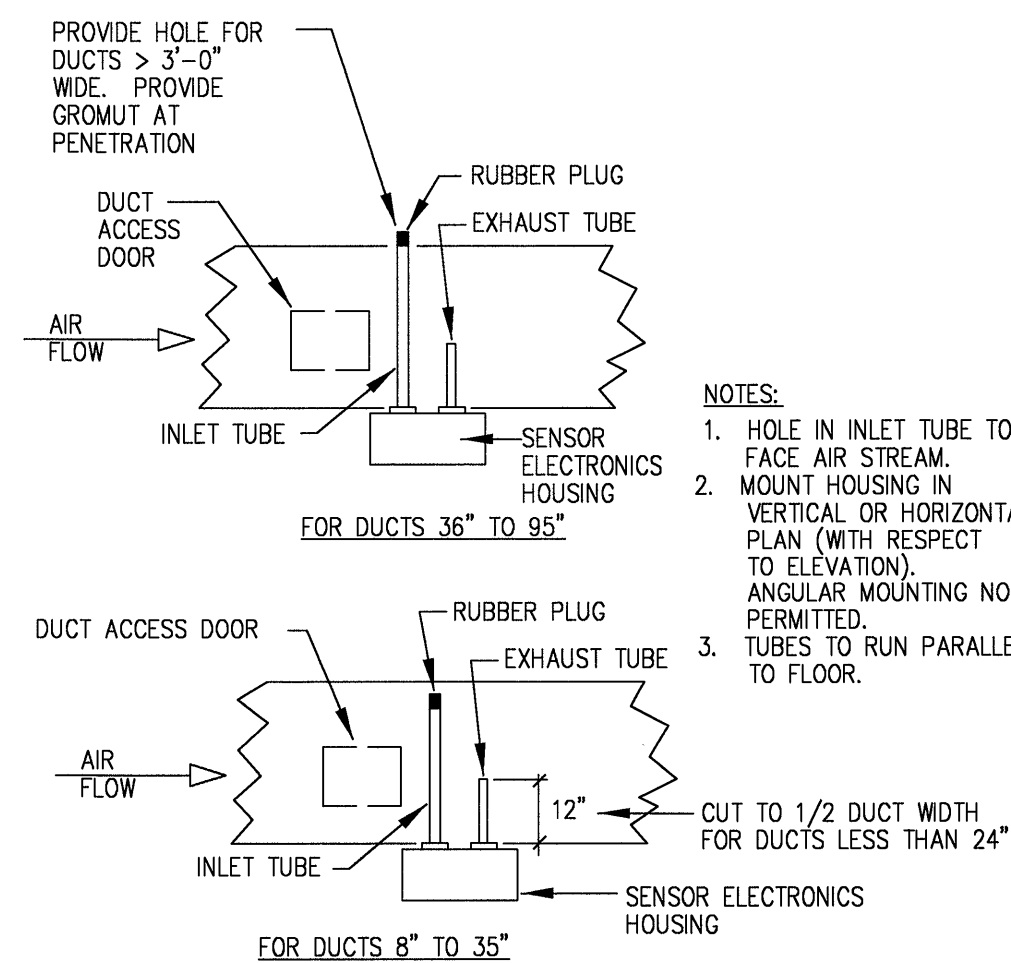
3 DIFFUSER FLEX RUN-OUT DETAIL
NO SCALE



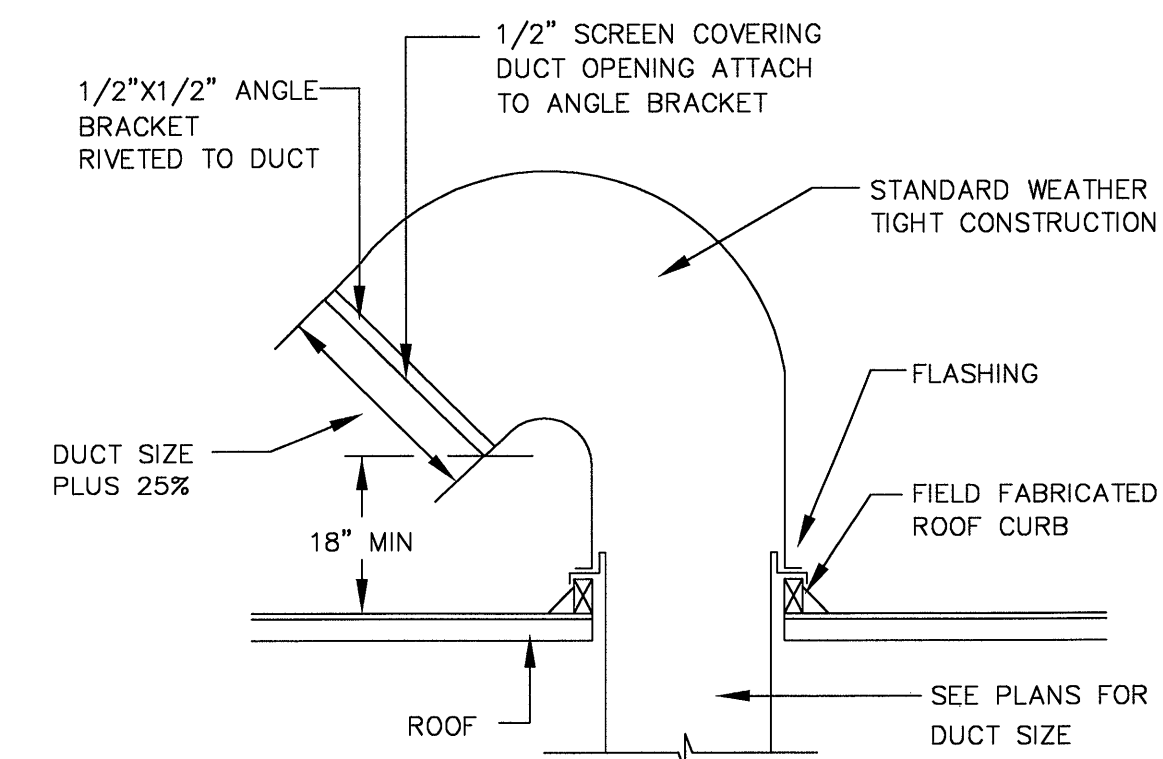
4 GAS VENT TERMINATION
NO SCALE



5 UNIT HEATER MOUNTING DETAIL
NO SCALE



7 DUCT SMOKE DETECTOR
NO SCALE



6 ROOF CURB DETAIL
NO SCALE

GOOSENECK DETAIL
NO SCALE

SPLIT SYSTEM FURNACE SCHEDULE												
UNIT NO.	MANUF.	MODEL NO.	CFM	HEATING		FAN		ELECTRIC			REMARKS	UNIT WEIGHT
				INPUT CFH	OUTPUT BTU	HP	RPM	VOLTS	PH	HZ		
F-1	LENNOX	G50-UH-36B-090	1200	88	72100	1/3	HI	120	1	60	SEE NOTE #1 BELOW	146 LBS
F-2	LENNOX	G50-UH-60D-135	2000	132	106900	3/4	.	.	.	60	SEE NOTE #2 BELOW	192 LBS
F-3	LENNOX	G50-UH-48C-110	3000	110x2=220	180400	(2)91/2	.	.	.	60	SEE NOTE #3 BELOW	338 LBS

1. FURNISH UNIT WITH: PROGRAMMABLE ELECTRONIC THERMOSTAT SIDE FILTER RACK, MATCHING C33-36B-2F (3) TON UP FLOW COOLING COIL.
2. FURNISH UNIT WITH: PROGRAMMABLE ELECTRONIC THERMOSTAT SIDE FILTER RACK, MATCHING C33-60D-2F (5) TON HORIZONTAL COOLING COIL.
3. FURNISH UNIT WITH: PROGRAMMABLE ELECTRONIC THERMOSTAT SIDE FILTER RACK, MAGICAIR HX-7.5V (7-1/2) TON HORIZONTAL COOLING COIL.

SPLIT SYSTEM CONDENSING UNIT SCHEDULE													
UNIT NO.	MANUF.	MODEL NO.	COOLING BTUH		LIQUID	SUCTION	ELECTRIC				REMARKS	UNIT WEIGHT	
			SENSIBLE	TOTAL			VOLTS	PH	HZ	MOCBP			MCA
AC-1	LENNOX	HS29-036	27720	36000	3/8"	3/4"	208	3	60	20A	14.0	SEE NOTES BELOW	148 LBS
AC-2	LENNOX	HS29-060	45296	59600	3/8"	7/8"	208	3	60	40A	23.5	SEE NOTES BELOW	207 LBS
AC-3	LENNOX	HS29-090	.	.	5/8"	1-3/8"	208	3	60	60A	39.0	SEE NOTES BELOW	427 LBS

1. FURNISH UNIT WITH: MOUNTING BASE, LEVELING LEGS, TIMED OFF CONTROL

UNIT HEATER SCHEDULE												
UNIT NO.	MANUF.	MODEL NO.	CFM	HEATING		FAN		ELECTRIC			REMARKS	UNIT WEIGHT
				INPUT CFH	OUTPUT BTU	HP	RPM	VOLTS	PH	HZ		
UH-1 THRU 10	MODINE	PAE-400	5900	400	320000	3/4	1140	208	1	60	SEE NOTE BELOW	410 LBS

1. FURNISH UNIT WITH: TWO STAGE GAS CONTROL & INTERMITTENT PILOT

FAN SCHEDULE												
UNIT NO.	MANUF.	MODEL NO.	CFM	SERVICE	S.P. INCH	ELECTRICAL DATA				REMARKS	UNIT WEIGHT	
						HP	RPM	VOLTS	PH			HZ
EF-1,2,3,4	PENN	ZT	75	TOILET RMS	0.375"	48W	1200	120	1	60	SEE NOTE #1 BELOW	19 LBS
EF-5	PENN	DX11S	200	BREAK ROOM	0.5"	1/11	1300	120	1	60	SEE NOTE #4 BELOW	38 LBS
EF-6	PENN	DX11S	225	TOILET RM	0.60"	1/11	1400	120	1	60	SEE NOTE #1 BELOW	38 LBS
EF-7, 8, 9 & 11	GREENHECK	LB-36-7	7,900	OPEN STORAGE	0.25"	3/4	1725	208	3	60	SEE NOTE #3 BELOW	332 LBS
CF-1 THRU 9	DAYTON	4CB55	23500	WAREHOUSE	---	---	245	120	1	60	SEE NOTE #2 BELOW	24 LBS

1. FURNISH UNIT WITH: BACKDRAFT DAMPER, SWITCH W/PILOT LIGHT
2. FURNISH WITH SECONDARY SUPPORT CABLE AND CEILING FAN GUARD, SPEED CONTROL, SWIVEL BASE
3. FURNISH WITH: SLOPPED ROOF CURB, BACK DRAFT DAMPER, MATCHING STARTER WITH 24VOLT AXUL. CONTACT & UNIT MOUNT DISCONNECT
4. FURNISH WITH: SLOPPED ROOF CURB, BACK DRAFT DAMPER, SPEED CONTROL, UNIT MOUNT DISCONNECT

S.S.E. SOUTH SHORE ENGINEERING TEAM INC.

ELECTRICAL & MECHANICAL ENGINEERS Phone: 781-331-4660 Fax: 781-829-4405 - E-mail: SSETINC@aol.com
720 WASHINGTON STREET - HANOVER, MA - COLLEGE PARK - YALE BUILDING

DION & SOKOL INC ARCHITECTS

Project no. 01-20
Drawn GMP
Checked C.J.W./JPS
Date 01-21-2003

H-3

HVAC SCHEDULES & DETAILS
WAREHOUSE FACILITY
HARVEY INDUSTRIES 401 RIVERSIDE ST. PORTLAND, ME

SUDBURY MA

revisions: