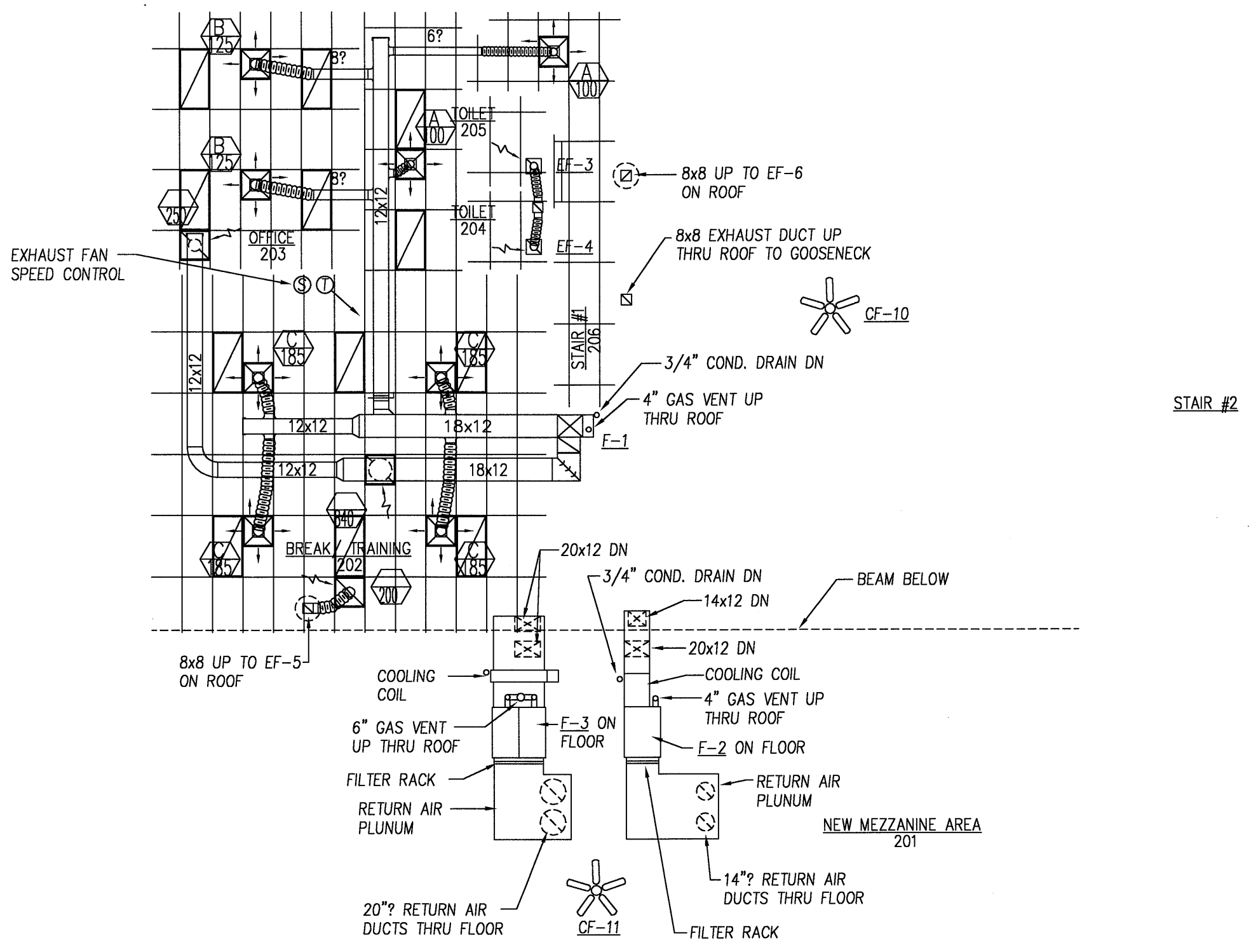


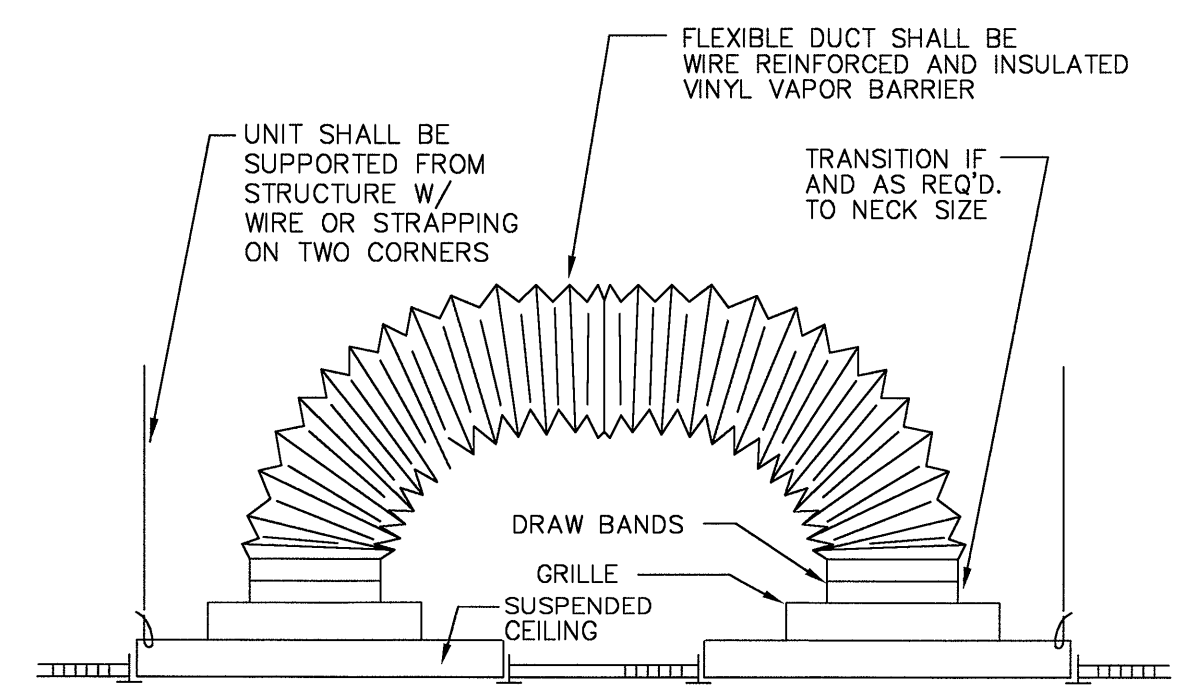
ADDITIONAL ELECTRIC HEATER BY ELECT. CONT.

OFFICE AREA FIRST FLOOR
1/8"=1'-0"



OFFICE AREA MEZZANINE
1/8"=1'-0"

- GENERAL NOTES:
- FURNISH & INSTALL COPPER REFRIGERATION PIPING FROM EVAPORATOR COILS TO EXTERIOR GRADE MOUNTED CONDENSING UNITS AS REQUIRED. LINES SHALL BE FULLY INSULATED & CHARGED. COORDINATE EXACT ROUTING IN FIELD.
 - FURNISH & INSTALL COOLING COIL CONDENSATE DRAINS AS INDICATED. COORDINATE EXACT ROUTING IN FIELD & INSTALL WITHOUT CREATING TRAPS.
 - REFER TO DRAWING DM-1 FOR HVAC DEMOLITION NOTES.
 - FURNISH & INSTALL PROGRAMMABLE ELECTRONIC THERMOSTATS WITH CLEAR TAMPERPROOF COVERS & ALL RELATED LOW VOLTAGE CONTROL WIRING FOR EACH SYSTEM.



RETURN AIR TRANSFER DETAIL
NO SCALE

S.S.E.T. SOUTH SHORE ENGINEERING TEAM, INC.
ELECTRICAL & MECHANICAL ENGINEERS - Phone: 781-331-4660 - Fax: 781-829-4405 - E-mail: SSETINC@AOL.COM
720 WASHINGTON STREET - HANOVER, MA - COLLEGE PARK - YALE BUILDING

DION & SOKOL INC ARCHITECTS

ENLARGED OFFICE & MEZZANINE
HVAC PLANS PHASE I

HARVEY INDUSTRIES WAREHOUSE FACILITY
401 RIVERSIDE PORTLAND, ME

project no.	01-20
drawn	GMP
checked	CJW/JPS
dated	01-21-2003

H-1

SUBURRY MA

REVISIONS: