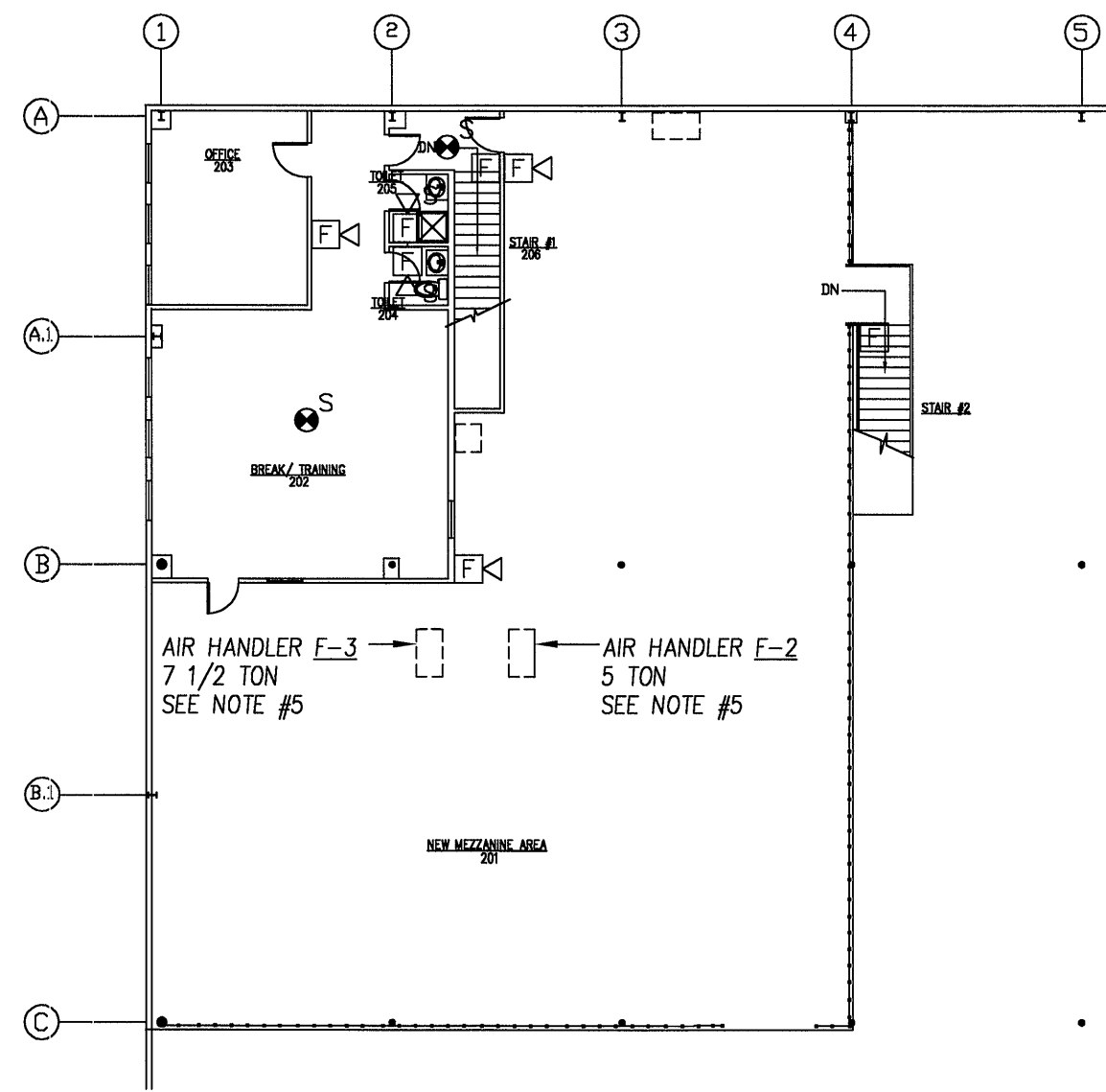
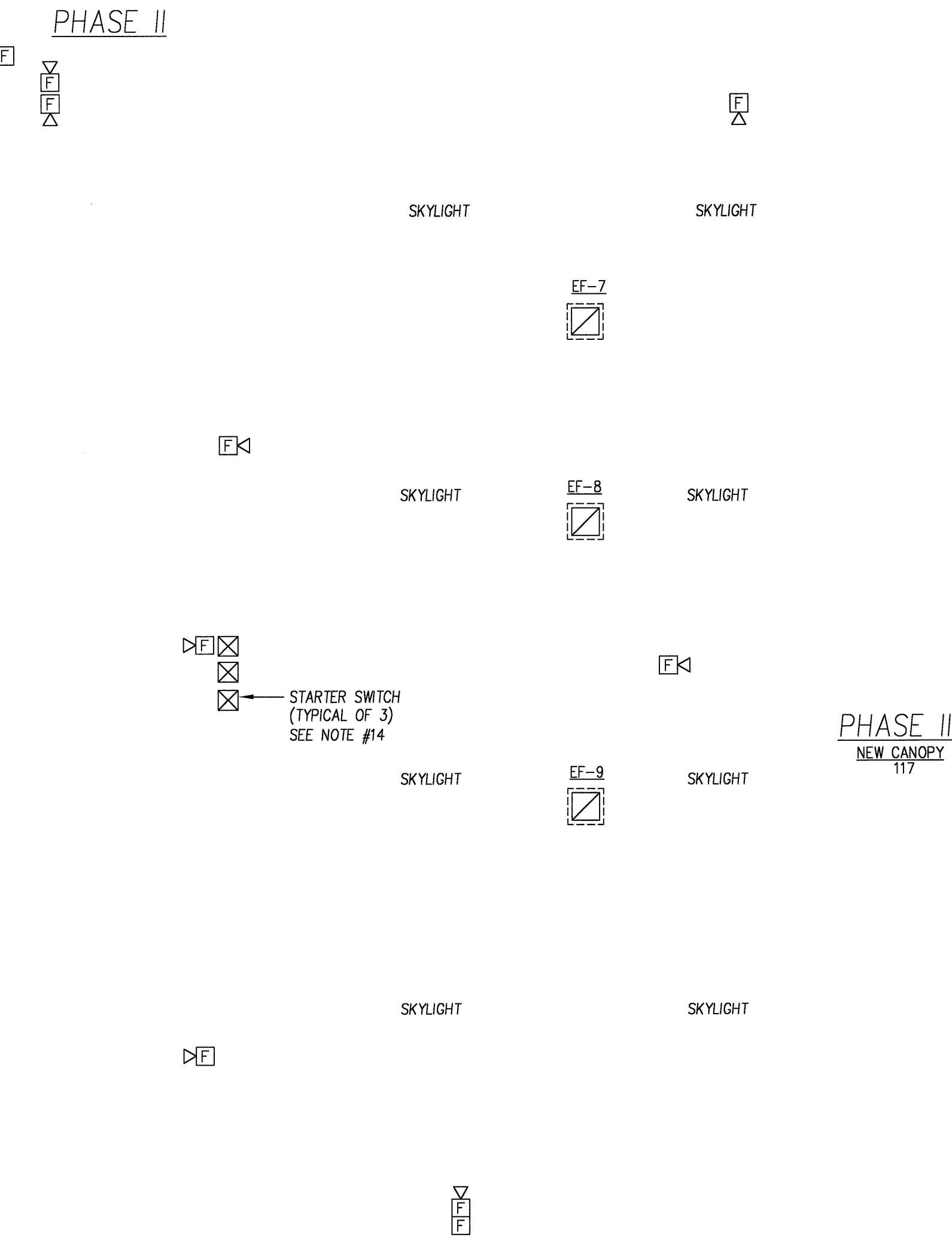


MEZZANINE PHASE I FIRE ALARM PLAN  
1/16"=1'-0"



WAREHOUSE PHASE I FIRE ALARM PLAN  
1/16"=1'-0"



revisions:

OVERALL & MEZZANINE FIRE ALARM PLANS PHASE I

WAREHOUSE FACILITY  
HARVEY INDUSTRIES 401 RIVERSIDE ST. PORTLAND, ME

Project no.	01-20
drawn	EAB
checked	CJW/JPS
dated	01-17-2003

FA-1

**FIRE ALARM SYSTEM NOTES:**

- FURNISH AND INSTALL MONITOR MODULES AT EACH FIRE ALARM DEVICE SHOWN. CONNECT TO LOOP OF MULTIPLEX SYSTEM.
- ALL FIRE ALARM WIRING SHALL BE INSTALLED IN CONDUIT. ALL CONDUIT AND BOXES SHALL BE CLEARLY LABELED "FIRE ALARM" AND TAGGED, AND SHALL BE RED IN COLOR.
- EACH SPRINKLER FLOW SWITCHES, AND LOW PRESSURE SWITCHES SHALL HAVE SEPARATE ZONE AND MONITOR MODULE.
- SPRINKLER TAMPER SWITCHES AT EACH RISER MAY BE CONNECTED TO SEPARATE ZONE AND MONITOR MODULE.
- FURNISH AND INSTALL DUCT MOUNTED DETECTOR SENSING TUBE IN SUPPLY DUCTWORK OF ALL HVAC EQUIPMENT 2000 CFM AND GREATER. COORDINATE WITH HVAC CONTRACTOR. FURNISH AND INSTALL WITH REMOTE INDICATING LIGHT AND TEST SWITCHES. LABEL AS TO HVAC UNIT SERVED.
- HORN/STROBES IN WAREHOUSE SHALL BE MOUNTED ON THE SIDE OF RACKS 80" A.F.F. RUN CONDUIT DOWN COLUMN FROM ROOF DECK AND INSTALL HORN STROBE ON RACK FACING EGRESS AISLE. DEVICE SHALL BE INSTALLED AS TO BE PROTECTED FROM ABUSE ALL 130 cd.
- CARRY IN BID AMOUNT IN ADDITION TO DEVICES SHOWN THE FOLLOWING FIRE ALARM EQUIPMENT WIRED UP COMPLETE LOCATIONS TO BE DETERMINED BY LOCAL AUTHORITY: 2 PULL STATIONS, 3 HORN/STROBES, 3 SMOKE DETECTORS, 2 FLOW SWITCHES & 2 TAMPER SWITCHES. BREAKOUT COST IN BID AMOUNT.
- FURNISH AND INSTALL GRAPHIC MAP NEXT TO FIRE ALARM CONTROL PANEL.
- FURNISH AND INSTALL RADIO CONTROL MASTER BOX AND ANTENNA ON ROOF. COORDINATE WITH PORTLAND FIRE DEPT. AND REFER TO 2000 REGULATIONS.
- COORDINATE EXACT LOCATIONS OF ALL TAMPER AND FLOW SWITCHES WITH SPRINKLER CONTRACTOR PRIOR TO ROUGHING.
- REFER TO "PORTLAND FIRE ALARM RULES AND REGULATIONS" WHICH ARE HEREBY PART OF ALL THE ELECTRICAL SUB CONTRACTORS WORK TO BE CARRIED IN BID AMOUNT. CARRY ALL PORTLAND FIRE PERMIT AND INSPECTION FEES IN BID AMOUNT.
- FURNISH & INSTALL W.P. BACK LIT REMOTE ADDRESSABLE ANNUNCIATOR WITH ALARMS, SILENCE SWITCHES RESET SWITCHES MOMENTARY TYPE AND EQUIPPED WITH #135 KEY SWITCH ALL WITH SPRING LOADED WEATHER RESISTANT KEY SWITCH COVERS. REFER TO PORTLAND REGULATIONS FOR REMOTE ANNUNCIATORS.
- ELECTRICAL CONTRACTOR SHALL SUBMIT TO MANCHESTER FIRE DEPT. COMPLETE SHOP DRAWINGS OF ALL FIRE ALARM EQUIPMENT INCLUDING POINT TO POINT DRAWINGS, INDICATING ALL ADDRESSES, BATTERY CALCULATIONS ETC. REFER TO PORTLAND ADMINISTRATIVE RULES.
- PROVIDE FAN SHUT DOWN VIA AUXILIARY RELAYS IN FAN STARTERS FOR NEW CANOPY ROOF EXHAUST FANS #7, 8 & 9.

**FIRE ALARM LEGEND**

NOTE: SOME ITEMS IN THIS LEGEND MAY NOT BE USED, SEE PLANS FOR APPLICABLE ITEMS.

- FS SPRINKLER FLOW SWITCH
- TS SPRINKLER TAMPER SWITCH
- IV SPRINKLER POST INDICATING VALVE
- SS SINGLE STATION SMOKE DETECTOR
- DS SMOKE DETECTOR (SYSTEM TYPE)
- HT HEAT DETECTOR, FIXED TEMPERATURE
- HR HEAT DETECTOR, RATE OF RISE
- DS DUCT SMOKE DETECTOR
- HS HEAT DETECTOR
- PS FIRE ALARM PULL STATION 48" A.F.F.
- SL FIRE ALARM STROBE LIGHT
- HL FIRE ALARM HORN & LIGHT 80" A.F.F.
- MB FIRE ALARM MASTER BOX
- FACP FIRE ALARM CONTROL PANEL
- K KNOX BOX
- FL FIRE ALARM INDICATING LIGHT WEATHERPROOF
- DS DUCT SMOKE DETECTOR TEST SWITCHES
- EC ELECTRICAL CONTRACTOR
- GC GENERAL CONTRACTOR
- ARCH ARCHITECT
- HVAC HEATING VENTILATING AND AIR CONDITIONING
- AFF ABOVE FINISHED FLOOR
- LTG LIGHTING
- EM EMERGENCY
- WP WATERPROOF
- cd CANDELA

S.S.E.I. SOUTH SHORE ENGINEERING TEAM INC.

ELECTRICAL & MECHANICAL ENGINEERS - Phone: 781-331-4660 - Fax: 781-829-4405 - E-mail: SSETING@AOL.COM  
720 WASHINGTON STREET - HANOVER, MA - COLLEGE PARK - YALE BUILDING

DION & SOKOL INC ARCHITECTS

SUBURRY MA