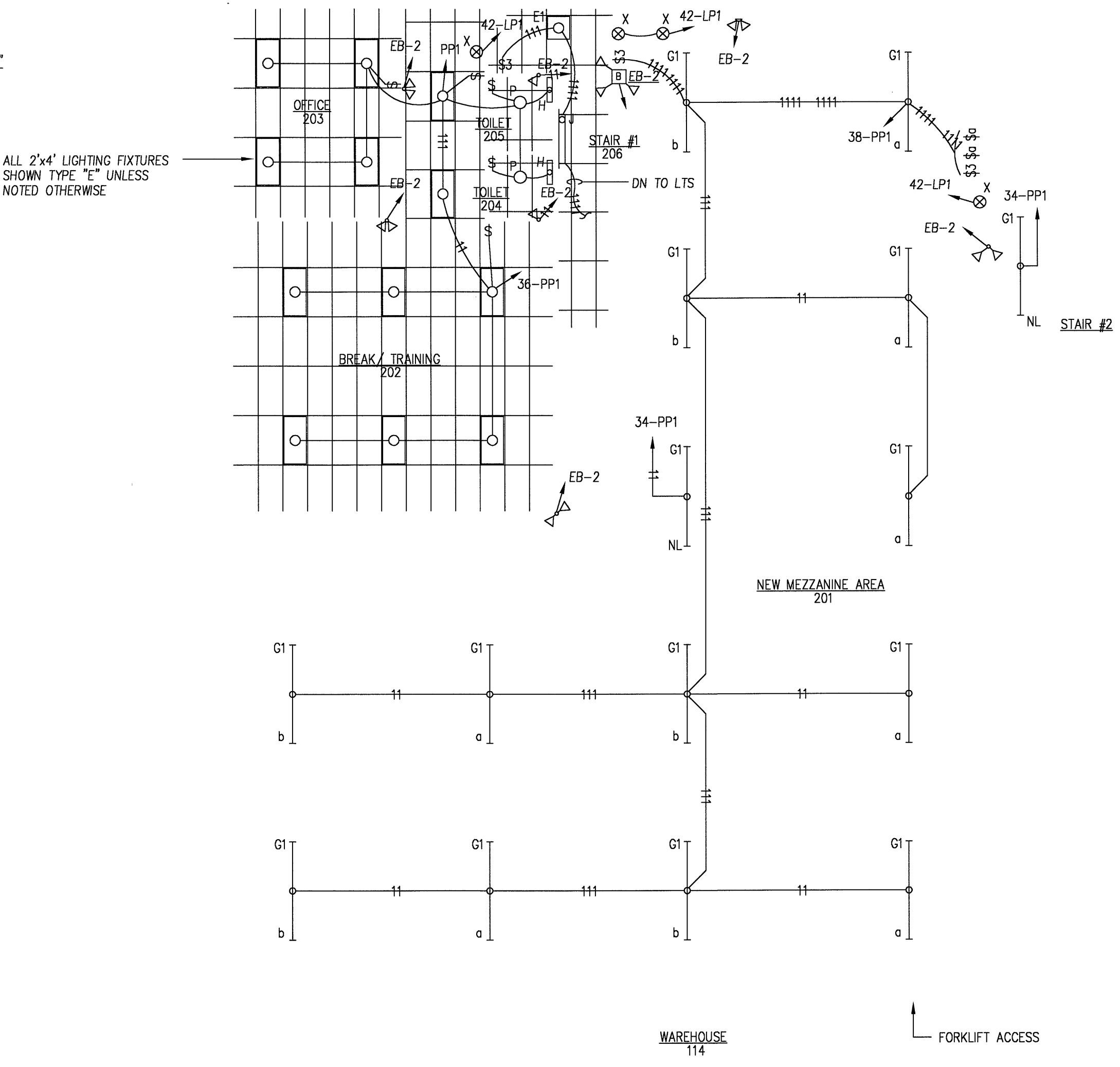
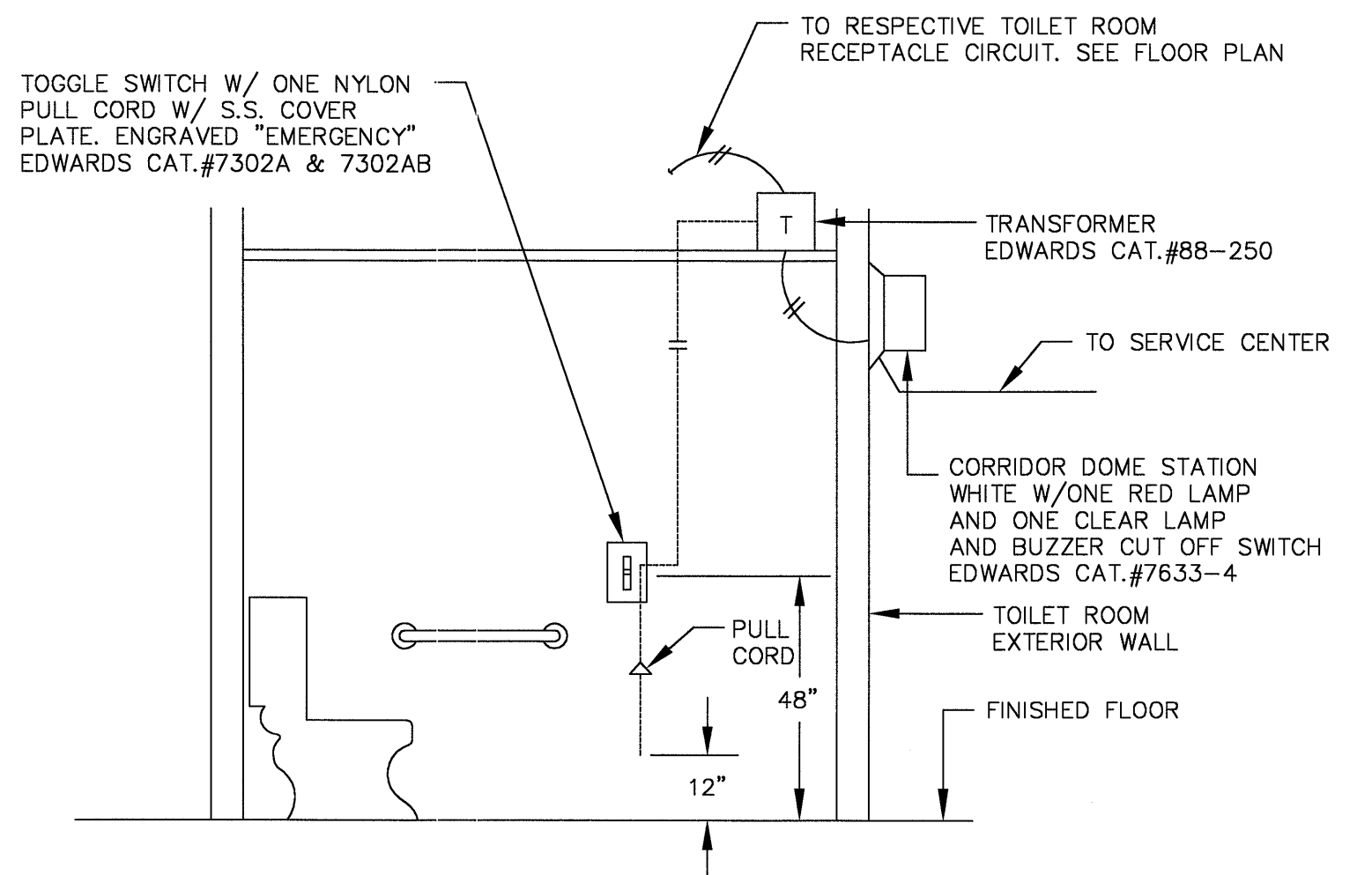


ENLARGED OFFICE AREA FIRST FLOOR  
1/8"=1'-0"



ENLARGED OFFICE AREA MEZZANINE  
1/8"=1'-0"



NOTE: IF HANDICAPPED TOILET REQUIRED, FURNISH & INSTALL CALL FOR AID SIGNALING DEVICES AS SPECIFIED. EQUIP. AS MFRD. BY DUKANE SHALL BE CONSIDERED AS AN EQUAL.

CALL FOR AID ALARM DETAIL  
NO SCALE

- NOTES:
1. ALL EXIT LIGHTING FIXTURES TYPE "X" EQUIPPED WITH SELF CONTAINED BATTERY BACKUP.
  2. ALL EMERGENCY BATTERY UNITS SHALL BE WIRED TO CONSTANT LIGHTING CIRCUIT WITHIN AREA SERVED.
  3. LIGHTING FIXTURES INDICATED BY "NL" SHALL BE ON CONSTANT NIGHT LIGHTING CIRCUIT.
  4. COORDINATE EXACT LOCATIONS OF UNDER COUNTER LIGHTING WITH ARCHITECT IN FIELD.
  5. REFER TO ARCHITECTURAL REFLECTED CEILING PLAN FOR EXACT LOCATION OF ALL LIGHTING FIXTURES.

S.S.E.I. SOUTH SHORE ENGINEERING TEAM, INC.  
ELECTRICAL & MECHANICAL ENGINEERS - Phone: 781-331-4860 - Fax: 781-829-4405 - E-mail: SSETTING@AOL.COM  
720 WASHINGTON STREET - HANOVER, MA - COLLEGE PARK - YALE BUILDING

**DION & SOKOL INC** ARCHITECTS

SUBBURY MA

ELECTRICAL ENLARGED OFFICE & MEZZANINE  
LIGHTING PLANS PHASE I

HARVEY INDUSTRIES WAREHOUSE FACILITY  
401 RIVERSIDE PORTLAND, ME

Project no.	01-20
drawn	EAB
checked	CJW/JPS
dated	01-21-2003

E-4