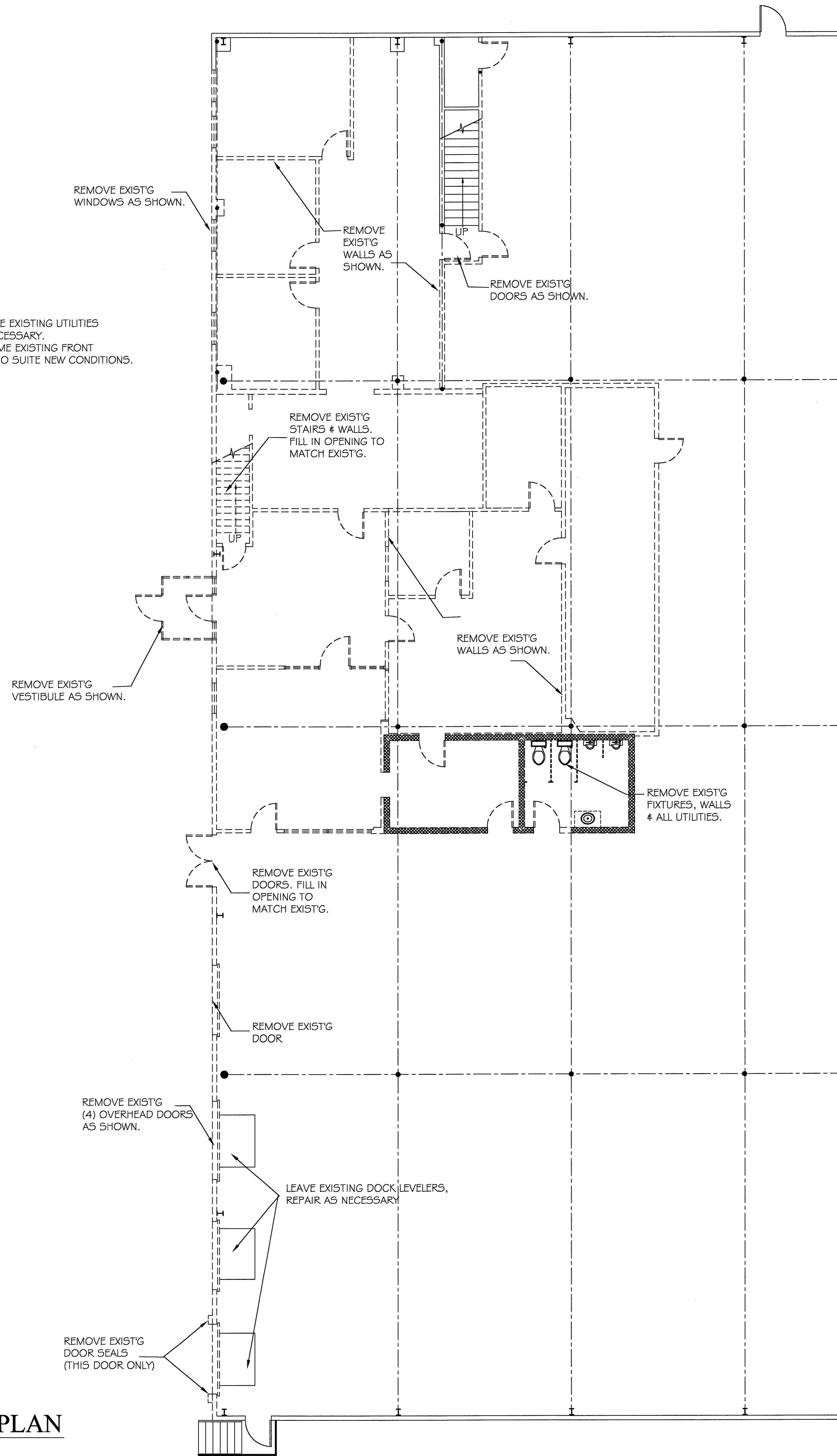


DEMOLITION MEZZANINE PLAN

SCALE: 1/8" = 1'-0"

NOTE
 1 REMOVE EXISTING UTILITIES AS NECESSARY.
 2 REFRAME EXISTING FRONT WALL TO SUITE NEW CONDITIONS.



KEY:	
EXISTING WALLS:	— — — —
STUD WALLS TO BE REMOVED:	- - - -
CMU WALLS TO BE REMOVED:	▨ ▨ ▨ ▨

DEMOLITION FLOOR PLAN

SCALE: 1/8" = 1'-0"