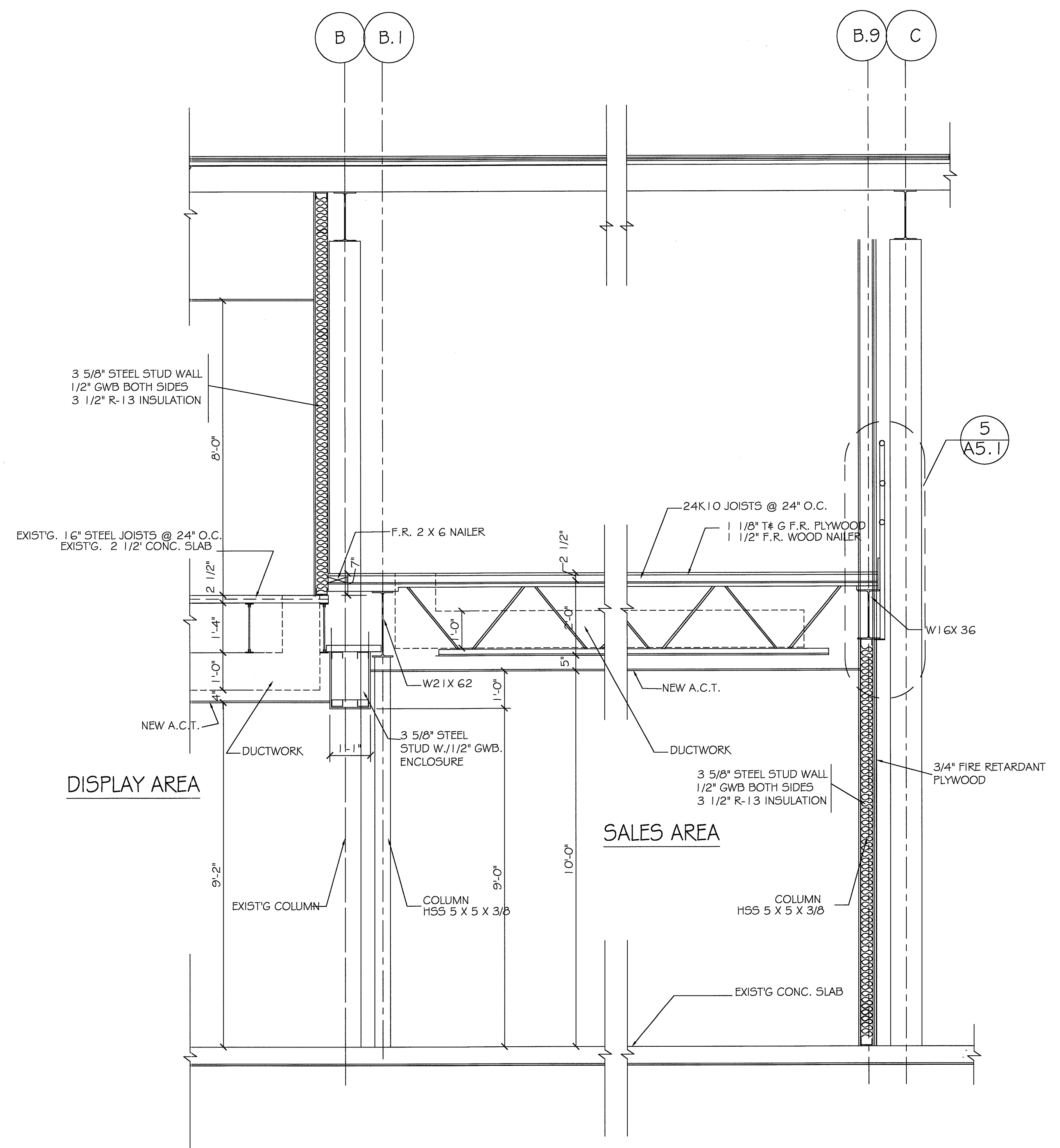
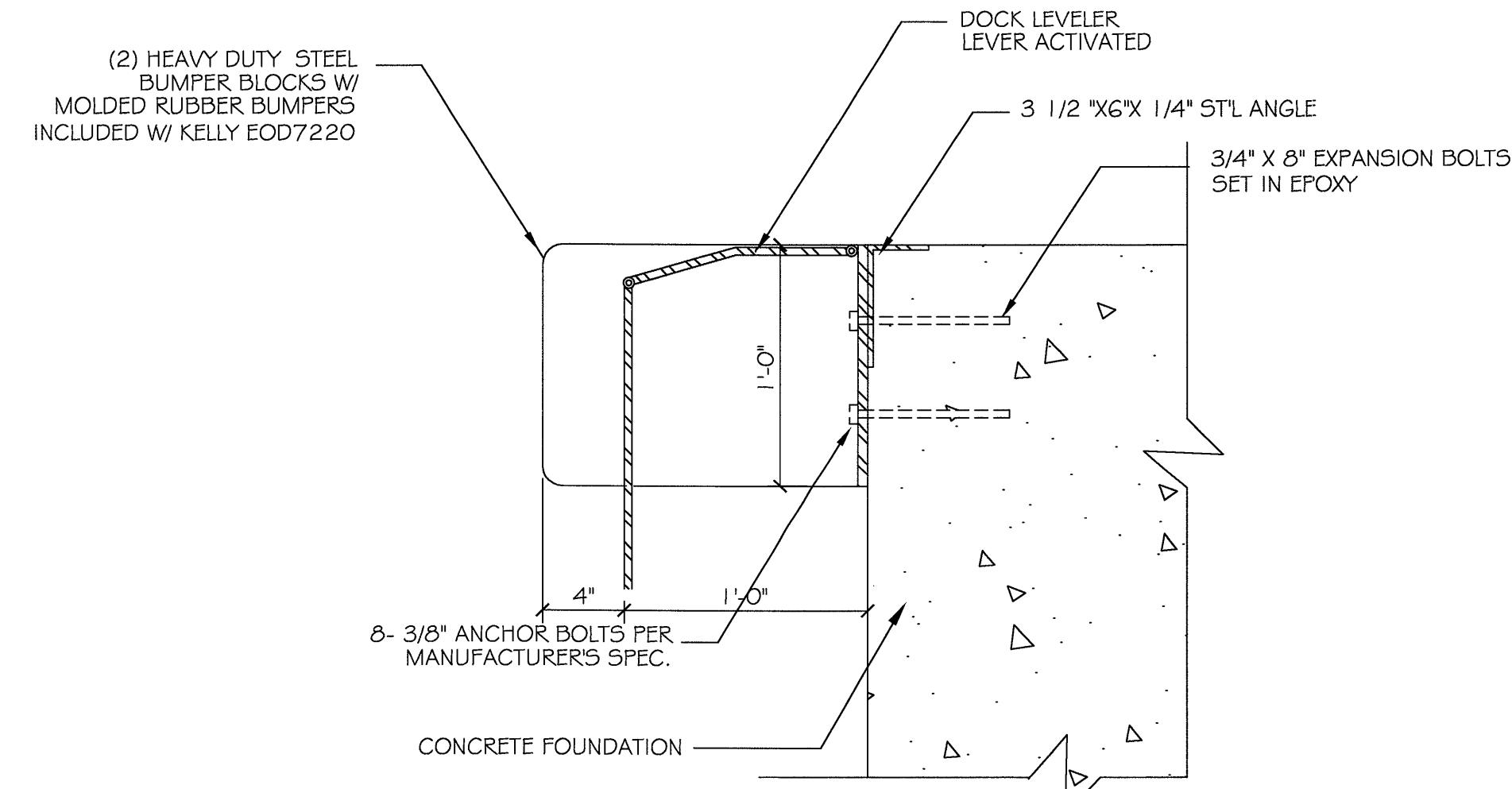


7 WALL SECTION
 SCALE: 1/2" = 1'-0"



8 WALL SECTION
 SCALE: 1/2" = 1'-0"



A
A3.3 DOCK LEVELER & BUMPER DETAIL
 SCALE: 3" = 1'-0"

WALL SECTIONS

WAREHOUSE FACILITY
 401 RIVERSIDE STREET
 PORTLAND, ME

HARVEY INDUSTRIES

project no.	01-20
drawn	AMG
checked	RRD
dated	01-21-03

A-3.3