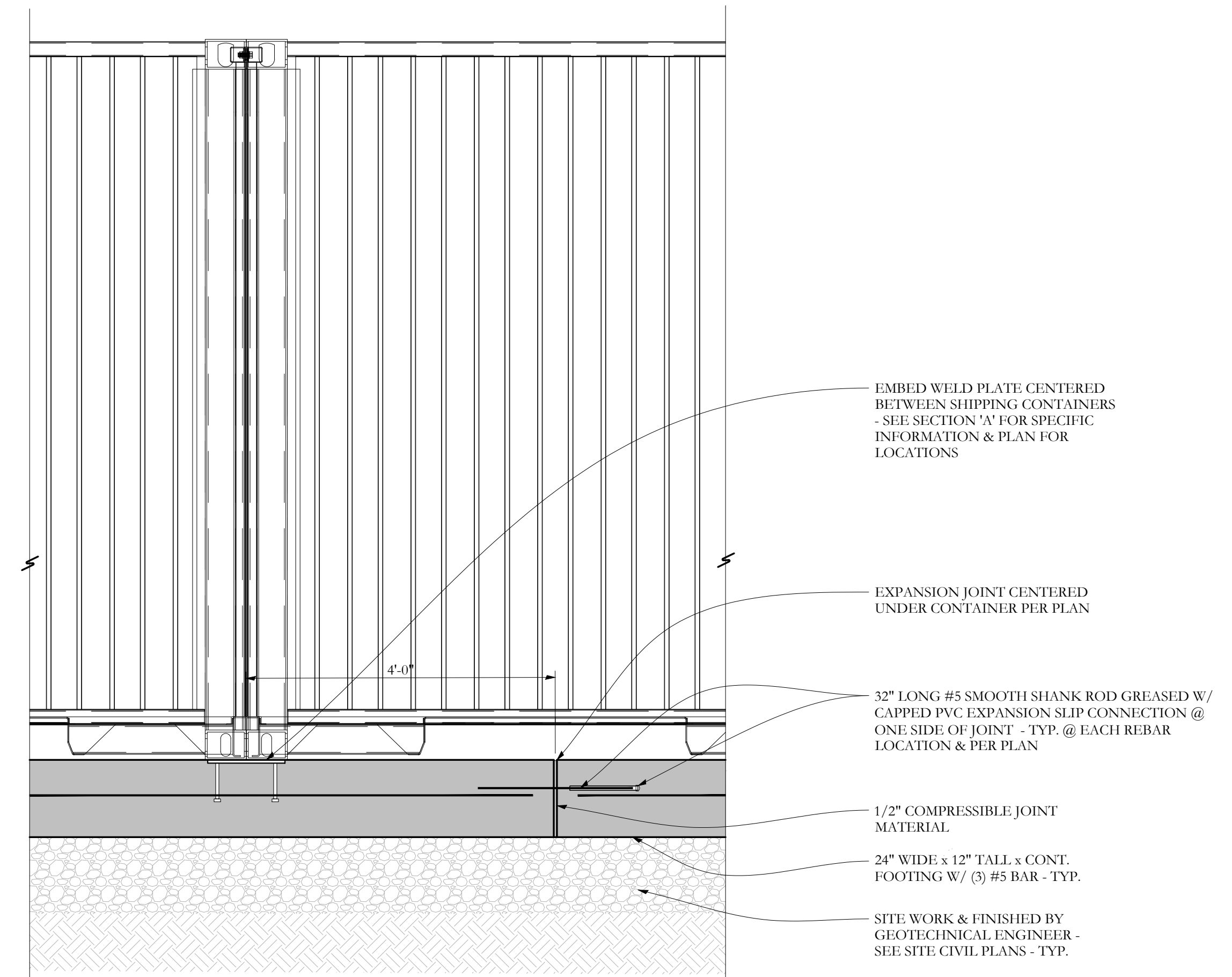
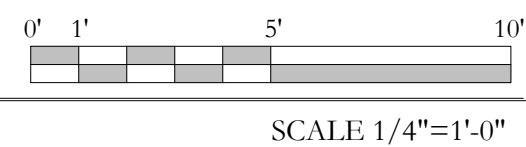
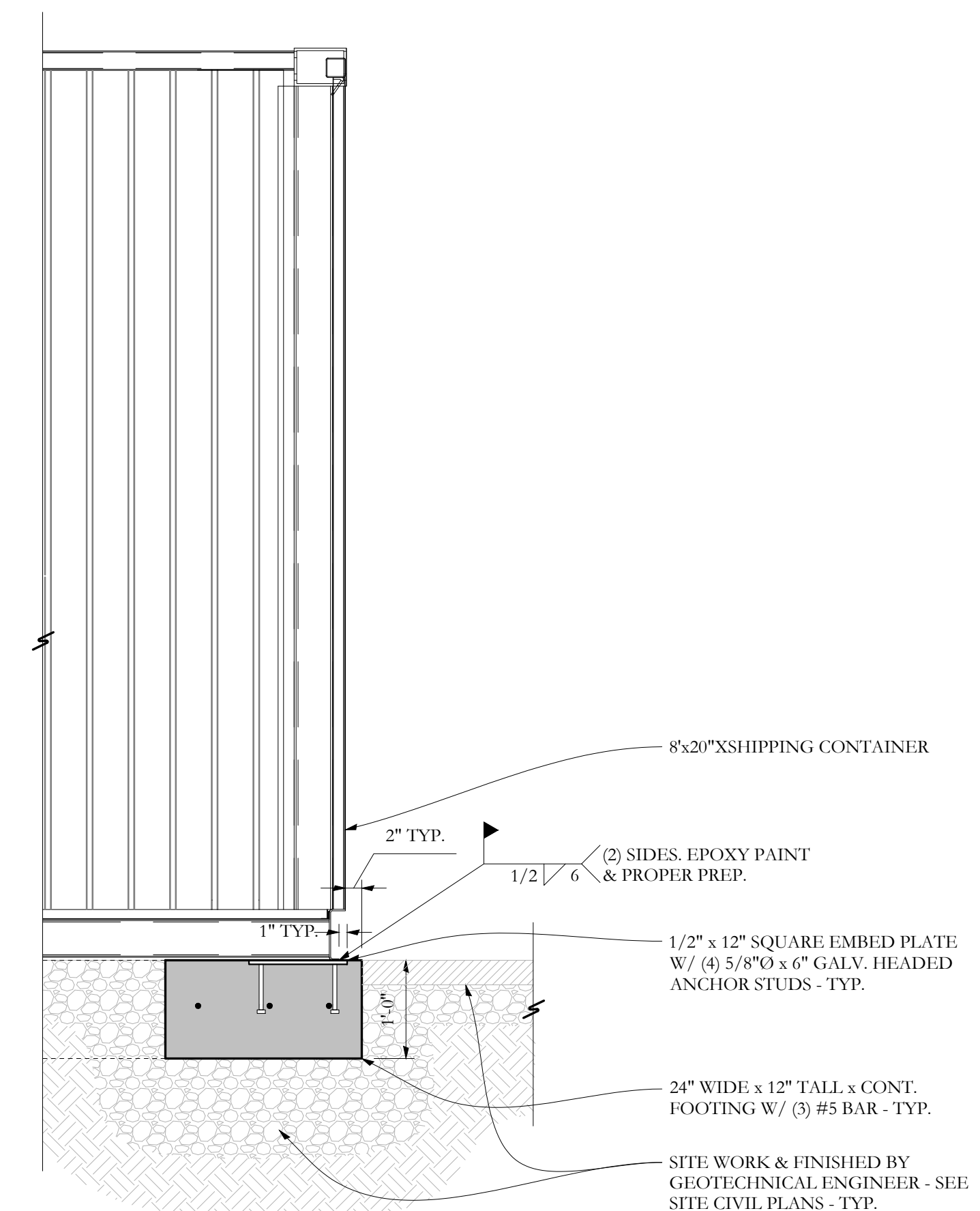


PARTIAL FOUNDATION PLAN

- NOTES:
1. ALL FOOTINGS ARE 12" DEEP 2'-0" WIDE x CONT. WITH (3) # 5 BARS CONT. - TYP. UNO
 2. VERIFY DIMENSIONS WITH ACTUAL SHIPPING CONTAINERS TO BE USED - TYP.



SECTION **B** S1.2 3/4"=1'-0



SECTION **A** S1.2 3/4"=1'-0

