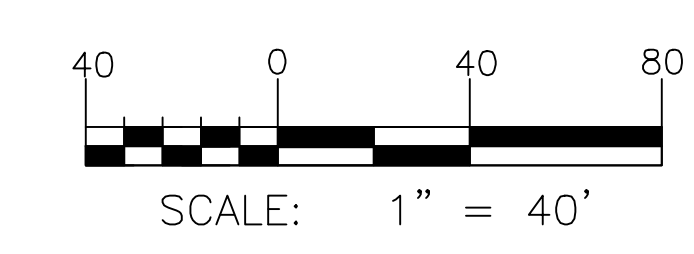
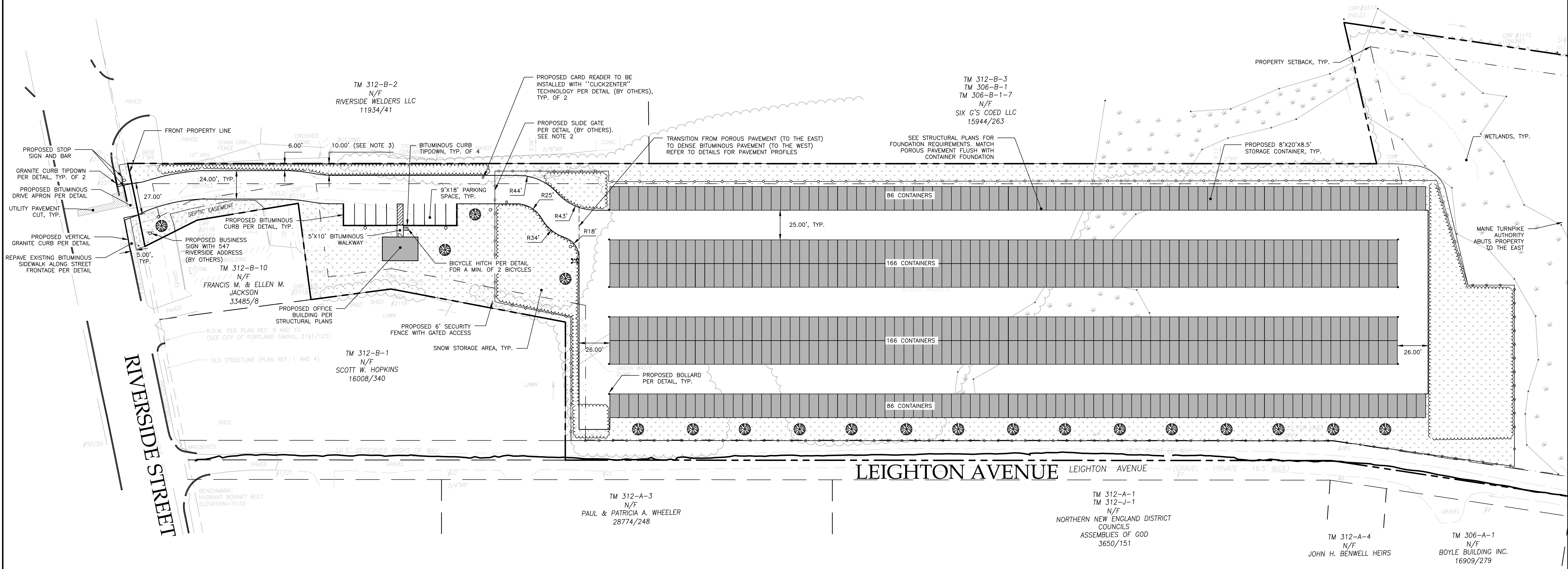
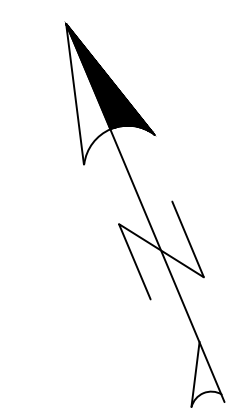


- GENERAL NOTES:
1. ALL PARKING AND STRIPING SHALL BE 4" AND WHITE UNLESS OTHERWISE NOTED.
 2. PER CITY OF PORTLAND TECHNICAL MANUAL, SLIDE GATE SHALL PROVIDE AN ACCESS WIDTH 2 FEET GREATER THAN THE TRAVEL WIDTH, YIELDING A MINIMUM WIDTH OF 28 FEET.
 3. DRIVEWAY SHALL COMPLY WITH 10' PAVEMENT SETBACK FROM ALL POINTS EAST OF THE 10' DIMENSION ARROWS.

SPACE AND BULK STANDARDS		
ZONE: I-M	REQUIRED	PROPOSED
MINIMUM LOT SIZE	NONE	290,450 SF
MINIMUM STREET FRONTAGE	60 FT	72 FT
MAXIMUM BUILDING HEIGHT	75 FT	17 FT
FRONT YARD SETBACK	1 FT / 1 FT BLDG HEIGHT	17 FT
REAR YARD SETBACK	1 FT / 1 FT BLDG HEIGHT	17 FT
SIDE YARD SETBACK	1 FT / 1 FT BLDG HEIGHT	17 FT
PAVEMENT SETBACK	10'	VARIES (SEE NOTE 3)
MAXIMUM IMPERVIOUS SURFACE RATIO	75%	54%
PARKING SPACES	1 SPACE / 1,000 SF FLOOR SPACE = 81	10

SURFACE SUMMARY	
8'x20' STORAGE CONTAINER COUNT	504
STORAGE CONTAINER SURFACE AREA	80,640 SF
OFFICE SURFACE AREA	600 SF
DENSE PAVEMENT SURFACE AREA	11,425 SF
POROUS PAVEMENT SURFACE AREA	58,905 SF
TOTAL	151,040 SF

LEGEND	
HATCH STYLE	ASSOCIATED AREAS
	GREEN SPACE
	CONCRETE
	SNOW STORAGE AREA



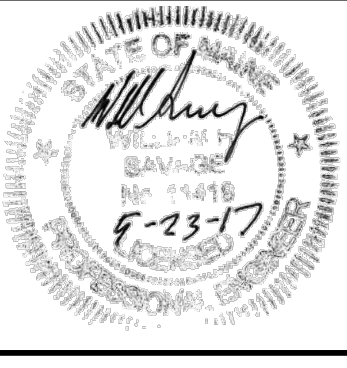
FINAL
NOT ISSUED FOR
CONSTRUCTION

ISSUED FOR	BY	DATE
PRELIM. APP.	WHS	2/2/17
SLODA APP.	WHS	3/3/17
FINAL APP.	WHS	4/18/17
WETLAND REV.	WHS	5/1/17
BLDG & MCG PERMITS	WHS	5/23/17

DRAWING NAME: **SITE PLAN**
 PROJECT NAME: **RIVERSIDE SELF-STORAGE CONTAINERS**
 CLIENT: **547 RIVERSIDE LLC**
 59 MOODY STREET, PORTLAND, MAINE 04101

ACORN ENGINEERING, INC.
 158 BANGOR ST. PORTLAND, MAINE 04102
 (207) 775-2655

FILE: 1080_CIVIL
 JN: 1080
 SCALE: 1" = 40'
 DESIGNED BY: WHS
 DRAWN BY: SJL
 CHECKED BY: WHS



DRAWING NO. **C-10**