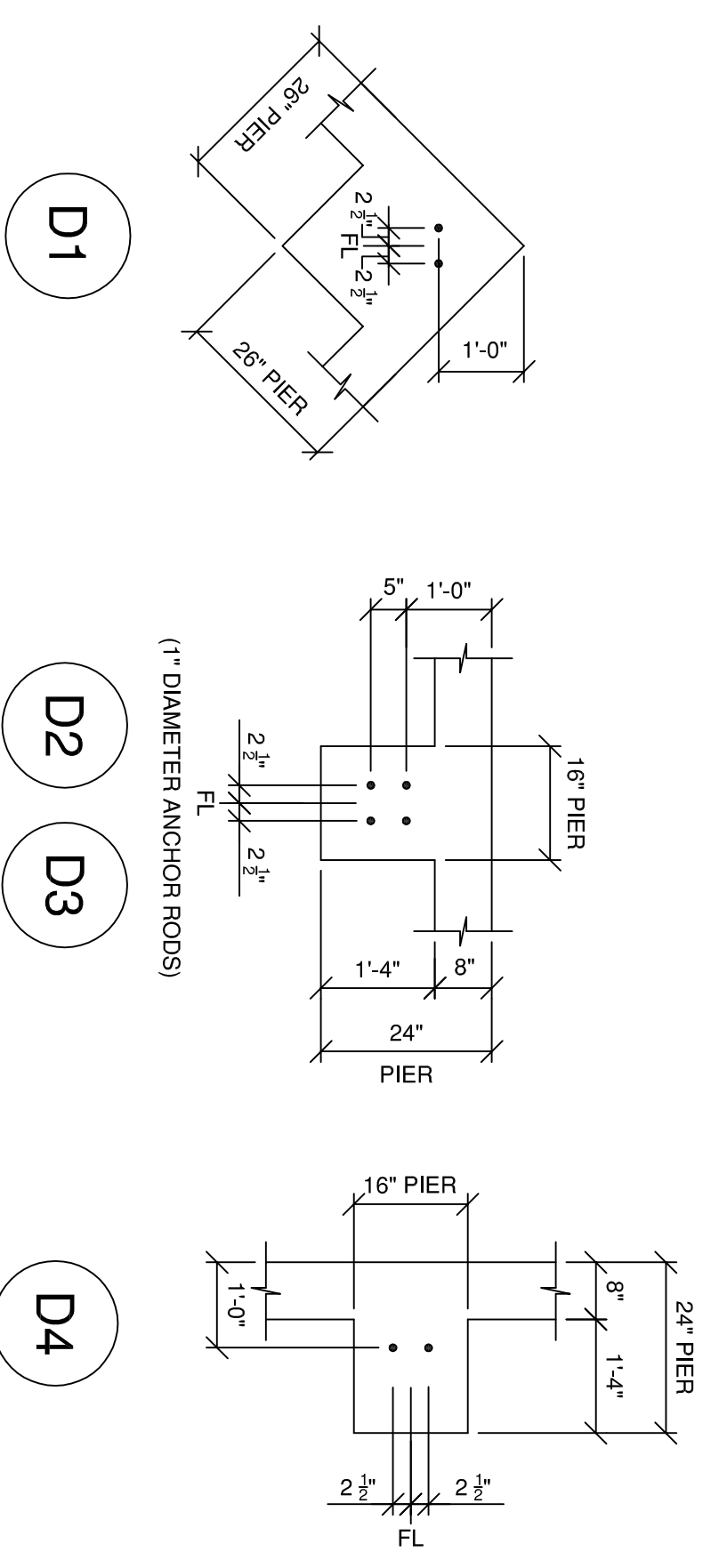


ISSUED FOR
CONSTRUCTION

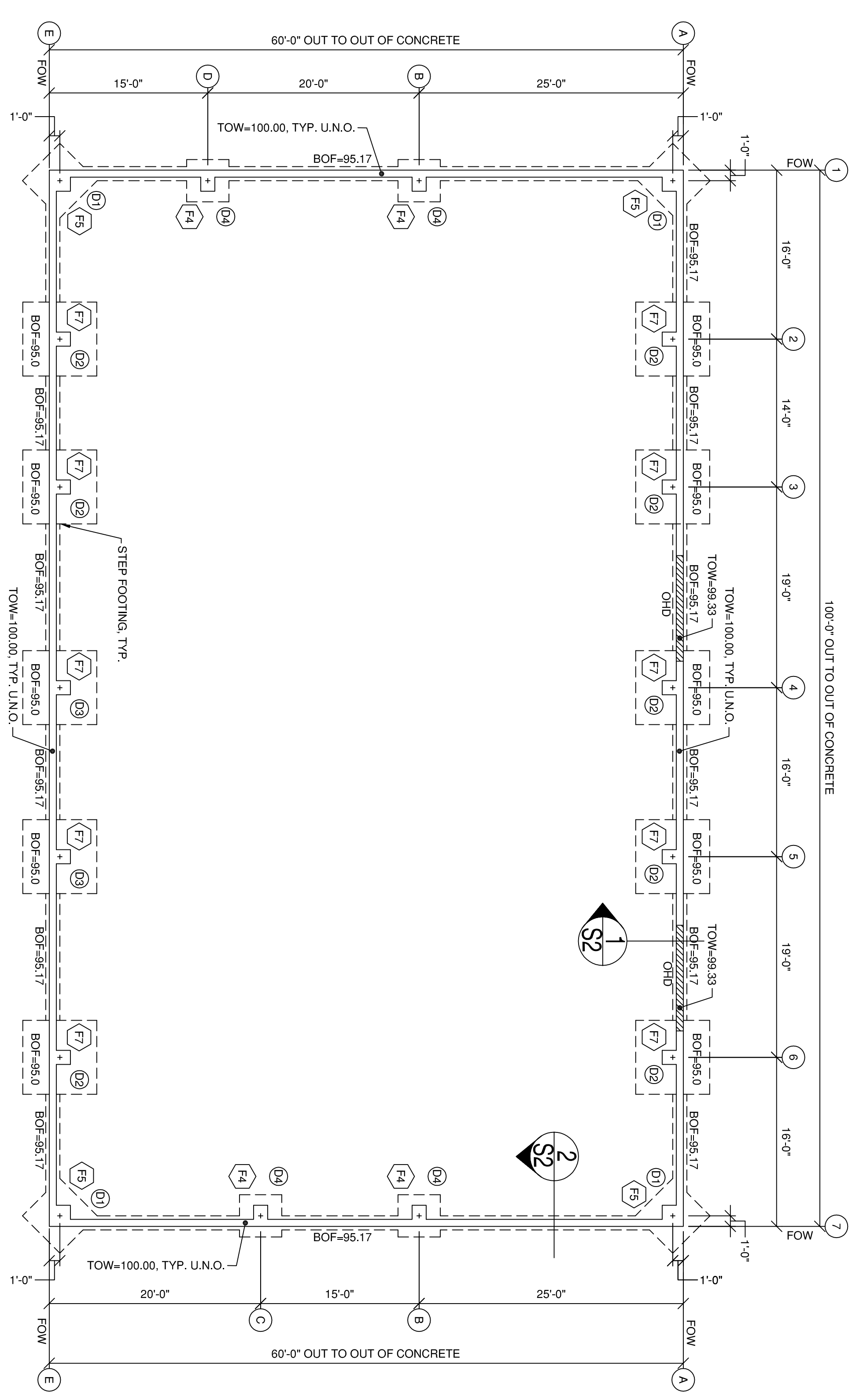


CONTRACTOR NOTE:
CONTRACTOR TO CONFIRM DOOR SIZE/
LOCATIONS, PIER SIZE, AND TOP OF
CONCRETE ELEVATIONS WITH FINAL
"VARCO-PRUDEN" (VP)
METAL BUILDING PLANS.

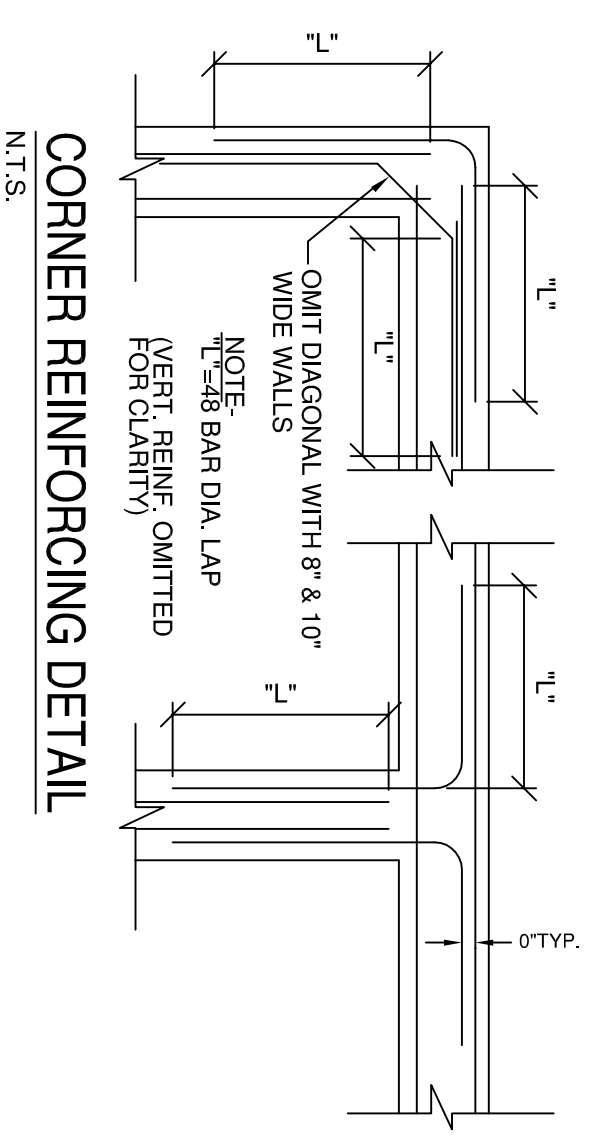
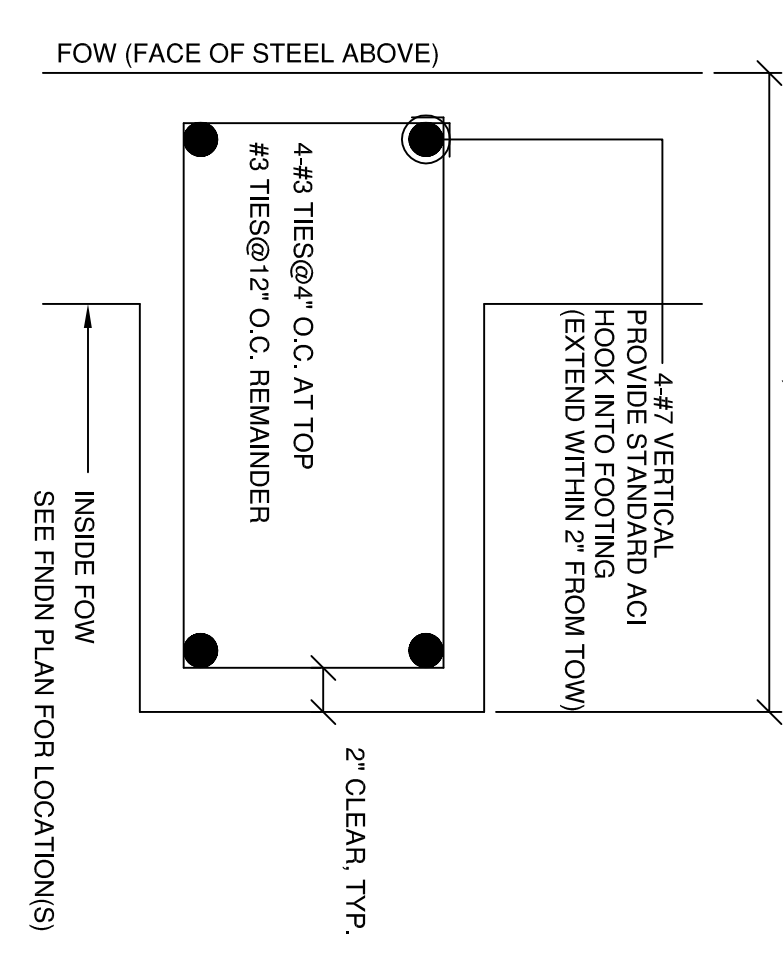
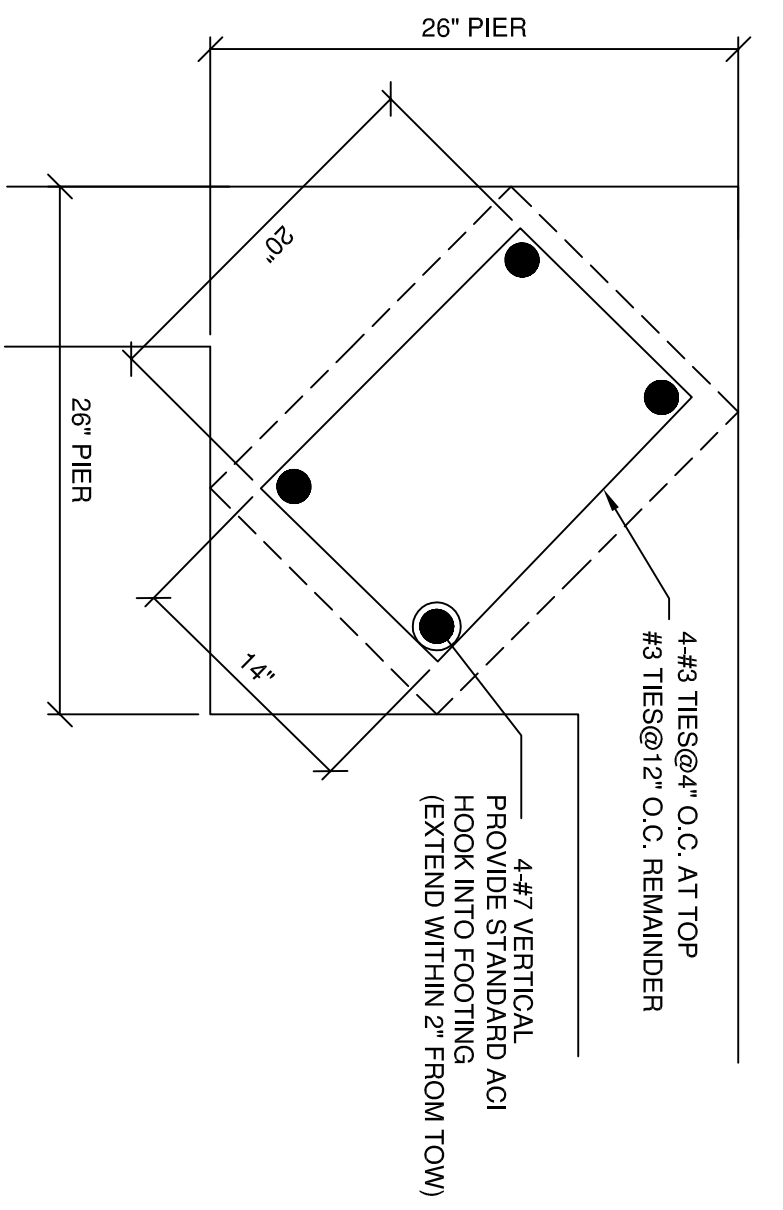
(ALL ANCHOR RODS TO BE 3/4" DIAMETER, UNLESS NOTED OTHERWISE)
PIER DETAILS
N.T.S.

ANCHOR BOLT DETAILS		
DIAMETER	SHAPE	LOCATION
3/4" A36 T.R.	1'-5" EMBED-3" PROJECTION EMBEDDED NUT	SEE PIER DETAILS
1" A36 T.R.	1'-8" EMBED-3" PROJECTION EMBEDDED NUT	SEE PIER DETAILS

ANCHOR BOLT NOTES:
1. CONTRACTOR TO CONFIRM ANCHOR ROD LAYOUT WITH
BOLTS BUILDING MANUF. PRIOR TO SETTING ANCHOR
2. ALL ANCHOR RODS TO BE 3/4" O THREADED ROD (TR)
UNLESS NOTED OTHERWISE.
3. EMBEDMENT SHOWN IS MIN. TO TOP OF NUT.
4. SEE VP PLANS FOR 1/2" DIA. JOIST REOS AT FRAMED
OPENINGS.



CONTRACTOR NOTE:
ALL COLUMN PIERS ARE DESIGNED FOR HORIZONTAL
THRUST BY COLUMN, AS A RESULT, ELEVATION
BOTTOM OF FOOTING LOWER THAN INDICATED IS
NOT ACCEPTABLE. CONTACT SRG ENGINEERING
SO ALL FOUNDATIONS CAN BE REDESIGNED SHOULD
ELEVATION BOTTOM OF FOOTINGS NEED TO BE LOWER.



FOOTING SCHEDULE		
SYMBOL	SIZE (L X TH X W)	COMMENTS
F4	4'-0" x 1'-0" x 4'-0"	6 - #4 E.W.
F5	5'-0" x 1'-0" x 5'-0"	7 - #4 E.W.
F7	7'-0" x 1'-2" x 7'-0"	7 - #5 E.W.

- FOUNDATION NOTES:**
- DESIGN MAXIMUM ASSUMED SOIL BEARING PRESSURE=2,000 PSF. TO BE VERIFIED BY THE PROJECT GEOTECHNICAL ENGINEER.
 - CONCRETE: WALLS & FOOTINGS F-3,000 P.S.I., 3/4" AGGREGATE, MAX. W/C=0.50, TYPE I OR II CEMENT.
(USE A MID-RANGE WATER REDUCER IF MORE WORKABILITY IS DESIRED.)
 - CONCRETE SUPPLIER IS TO SUBMIT MIX DESIGNS TO ENGINEER OF RECORD FOR EACH TYPE OF CONCRETE TO BE USED.
REINFORCING TO BE GRADE 60, NEW DEFORMED BARS.
 - ALL FOUNDATION WALLS ARE 8" WIDE, UNLESS NOTED OTHERWISE ON PLANS.
 - UNLESS NOTED ON PIER DETAILS, ALL ANCHOR RODS ARE 3/4" DIA. ASTM F1554 A36 THREADED ROD WITH NUT
EACH END. SEE DETAILS.
 - ALL FRAME AND WALK DOOR OPENINGS TO BE FIELD LOCATED.
 - G.C. TO VERIFY AND COORDINATE ALL LOCATIONS OF OVERHEAD DOORS (OHD), PEOPLE DOORS, AND
LOADING DOCKS.
 - REF. ELEV. TOP OF FOUNDATION WALL = 100.0 FT. TYP. UNLESS NOTED OTHERWISE THUS "TOW=-"
REF. ELEV. TOP OF PIER = 100.0 FT. TYP. UNLESS NOTED OTHERWISE THUS "TOP=-"
REFERENCE BOTTOM OF WALL FOOTING ELEVATION = 95.17 FT. TYPICAL U.N.O. THUS "BOF=-"
 - *ALL EXTERIOR FOOTINGS SHALL EXTEND 4'-6" BELOW FINISH GRADE.
 - ALL FOOTINGS TO BE CENTERED BELOW COLUMN BASE ABOVE.
 - SEE "VP" PLANS FOR ANCHOR ROD LOCATION, ORIENTATION, AND SIZE.
 - REFER TO PROJECT GEOTECHNICAL ENGINEERING REPORT FOR ALL FOUNDATION,
DRAINAGE, COMPACTION, BACKFILL, AND SUB-GRADE PREPARATION REQUIREMENTS.
 - G.C. TO DETERMINE SLAB PITCH REQUIREMENTS AND FIELD COORDINATE.
 - ALL SUB-SLAB STRUCTURAL FILL TO BE COMPACTED TO A MINIMUM OF 95% AS DETERMINED BY ASTM D-1557.
UNLESS SPECIFIED DIFFERENTLY, BY PROJECT GEOTECHNICAL ENGINEER.
 - CONTRACTOR TO COMPLY WITH LATEST PROVISIONS OF ACI 305 AND ACI 308 FOR HOT AND COLD WEATHER CONCRETING.
 - CONTRACTOR TO COMPLY WITH LATEST PROVISIONS OF ACI 304 FOR CONCRETE PLACEMENT.
 - SLAB, INCLUDING CONSTRUCTION, ISOLATION, CONTROL JOINTS AND VAPOR BARRIER DESIGN BY OTHERS.
 - CONTRACTOR TO SUBMIT DETAILED REINFORCING SHOP DRAWINGS TO SRG FOR REVIEW PRIOR TO CONSTRUCTION.

SRG ENGINEERING, INC.
CONSULTING STRUCTURAL ENGINEERS
P.O. BOX 925
GRAY, ME 04039
TEL: (207) 657-7323
FAX: (207) 657-7342
EMAIL: SRG@SRGENG.COM

PROJECT NO.	EOR	DESIGN	CHKD	DRAWN
05-132	SRG	SRG	SRG	SRG

REV.	BY:	DATE:	STATUS:

THIS PLAN SHALL NOT BE MODIFIED WITHOUT WRITTEN PERMISSION FROM SRG ENGINEERING, INC. ANY ALTERATIONS,
AUTHORIZED OR OTHERWISE, SHALL BE AT THE USER'S SOLE RISK AND WITHOUT LIABILITY TO SRG ENGINEERING, INC.

FOUNDATION PLAN AND DETAILS
OF
PHOENIX WELDING
PORTLAND, MAINE
FOR
PATCO CONSTRUCTION CO., INC.
SANFORD, MAINE