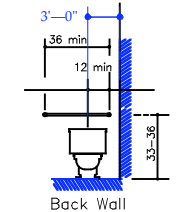
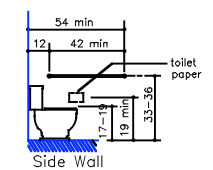


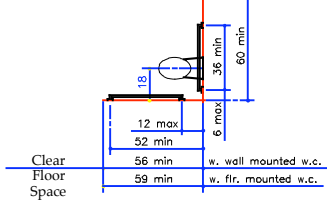
Typical Wall Framing
Scale: 1" = 1'-0"



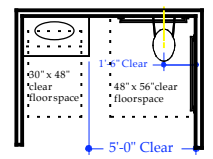
Grab Bars and Water Closets



Grab Bars and Water Closets



Standard Grab Bars and Minimum Clear Floor Space



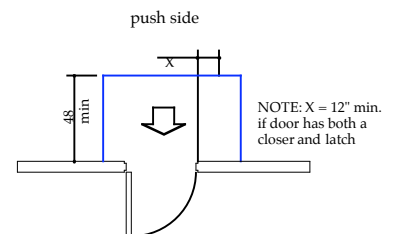
Min. Rest Room Req.

ALARM REQUIREMENTS

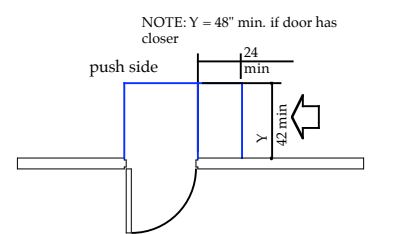
Note: tie alarm to Sprinkler system with flow switch.

- 4.28 Alarms.
- 4.28.1 General. Alarm systems required to be accessible by 4.1 shall comply with 4.28. At a minimum, visual signal appliances shall be provided in buildings and facilities in each of the following areas: restrooms and any other general usage areas (e.g., meeting rooms), hallways, lobbies, and any other area for common use.
- 4.28.2 Audible Alarms. Audible emergency alarms shall produce a sound that exceeds the prevailing equivalent sound level in the room or space by at least 15 dbA or exceeds any maximum sound level with a duration of 60 seconds by 5 dbA, whichever is louder. Sound levels for alarm signals shall not exceed 120 dbA.
- 4.28.3 Visual Alarms. Visual alarm signal appliances shall be integrated into the building or facility alarm system. If single station audible alarms are provided then single station visual alarm signals shall be provided. Visual alarm signals shall have the following minimum photometric and location features:
- (1) The lamp shall be a xenon strobe type or equivalent.
 - (2) The color shall be clear or nominal white (i.e., unfiltered or clear filtered white light).
 - (3) The maximum pulse duration shall be two tenths of one second (0.2 sec) with a maximum duty cycle of 40 percent. The pulse duration is defined as the time interval between initial and final points of 10 percent of maximum signal.
 - (4) The intensity shall be a minimum of 75 candela.
 - (5) The flash rate shall be a minimum of 1 Hz and a maximum of 3 Hz.
 - (6) The appliance shall be placed 80 in (2030 mm) above the highest floor level within the space or 6 in (152 mm) below the ceiling, whichever is lower.
 - (7) In general, no place in any room or space required to have a visual signal appliance shall be more than 50 ft (15 m) from the signal (in the horizontal plane). In large rooms and spaces exceeding 100 ft (30 m) across, without obstructions 6 ft (2 m) above the finish floor, such as auditoriums, devices may be placed around the perimeter, spaced a maximum 100 ft (30 m) apart, in lieu of suspending appliances from the ceiling.
 - (8) No place in common corridors or hallways in which visual alarm signalling appliances are required shall be more than 50 ft (15 m) from the signal.

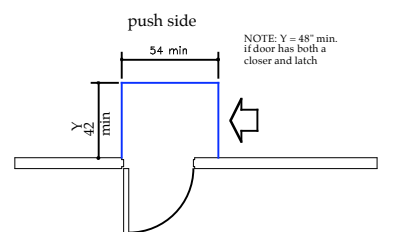
PUSH SIDE



1. Front Approach - Swinging Door

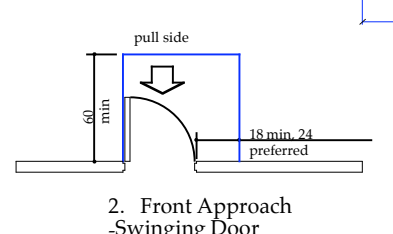


3. Latch Side Approach - Swinging Door

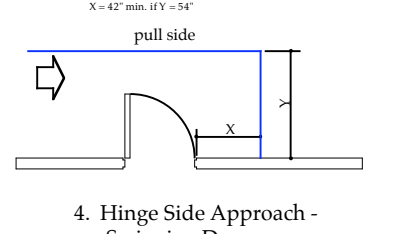


5. Side Approach - Swinging Door

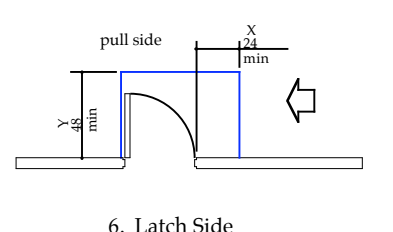
PULL SIDE



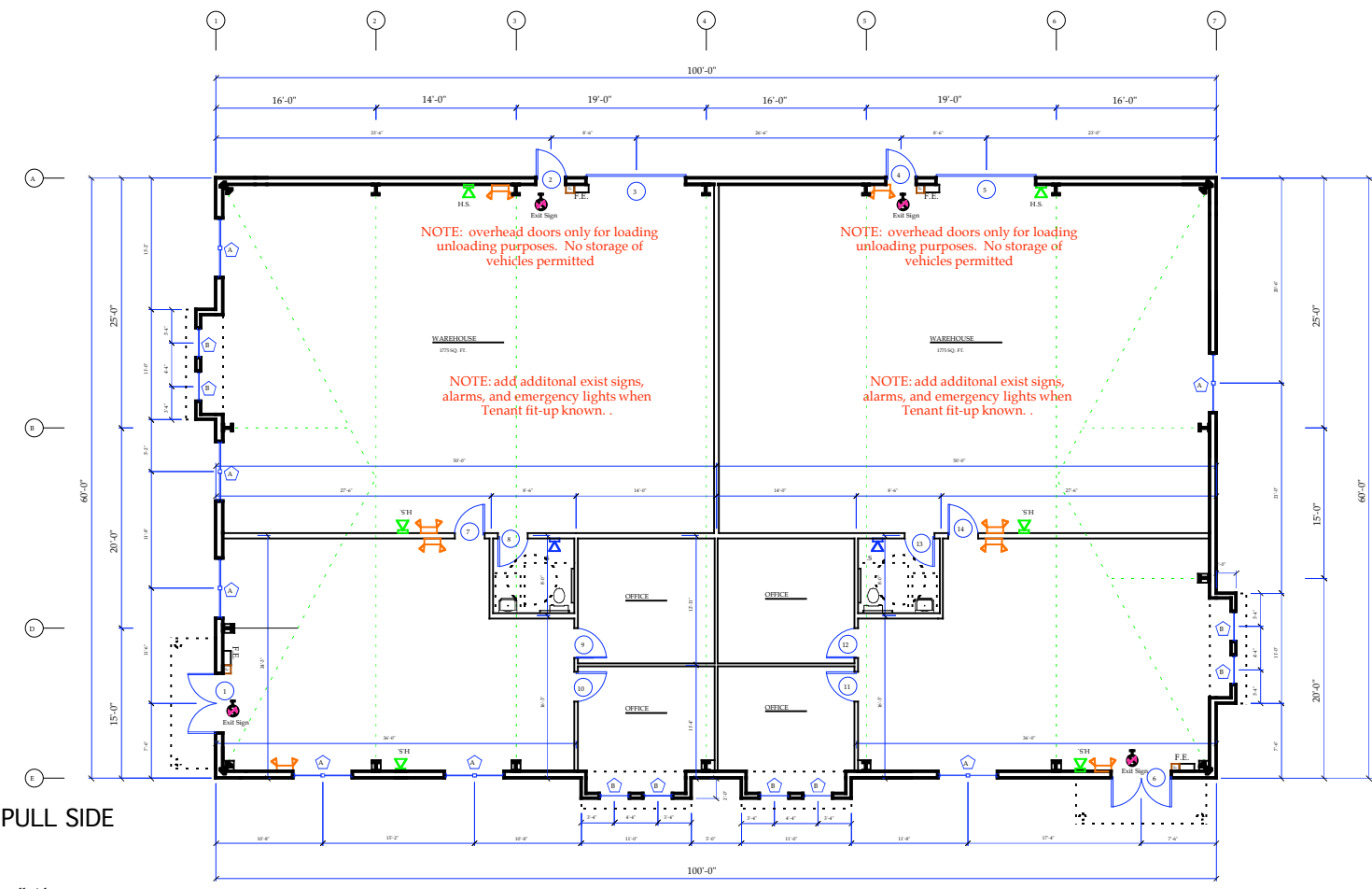
2. Front Approach - Swinging Door



4. Hinge Side Approach - Swinging Door



6. Latch Side Approach - Swinging Door



GENERAL NOTES

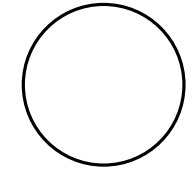
- Contractor shall work from given dimensions and large scale details only. Do not scale the drawings.
- The building shall be constructed to conform with all applicable codes including, but not limited to, 2003 edition of IBC, 2003 edition of NFPA 101, and 2003 International Energy Code.
- All wood in contact with concrete shall be pressure preservative treated.
- General contractor shall verify all existing conditions & dimensions prior to construction and report any discrepancies to the owner. General contractor shall proceed with the work only after discrepancy has been resolved by the owner.
- Caulking around windows shall be non-hardening type sealant.
- This project shall not contain hazardous material of any kind, in any product, of any kind; i.e. Asbestos.
- Install blocking behind all surface applied fixtures, and grab bars when mounted on stud walls.
- All door hardware to be accessible; e.g. lever handles.
 - Max. pull pressure exterior doors - 8lbs
 - Max. pull pressure interior doors - 5lbs
- All doors to be 36", unless noted otherwise. Min. clear door opening with - 32", unless noted otherwise.
- All exterior doors to have a maximum threshold of 1/2", with 45° bevel.
- For all structural design details and requirements refer to plans prepared by Varco Pruden Buildings.
- Smoke detector and emergency lighting system to be install per plan and designed by contractor in accordance with all applicable codes and regulations. Add emergency lighting and hornstobes as required when equipment in place.
- Fire suppression system shall be designed and installed, in the new and existing, in accordance with all applicable codes and regulations and as approved by the Maine State Farm Marshal and the local fire department

LEGEND

- EMERGENCY LIGHT
- EXIT SIGN
- FIRE EXTINGUISHER
- PULL STATION
- HORN STROBE
- STROBE

Floor Plan
Scale: 1/8" = 1'-0"

NO.	DATE	BY



PATCO CONSTRUCTION INC.
1293 MAIN STREET SANFORD, ME 04073
TEL: (207)324-5574 FAX: (207)324-1643
www.patco-construction.com

John W. Einstedler, R.A.
Architect
148 San Road Kennebunk, Maine 04043
Phone: 207-965-9700 Fax: 207-965-9818
http://www.patcoconstruction.com
Architect - Interior Design - General Design

PROPOSED BUILDING FOR:
PHOENIX WELDING
PORTLAND, MAINE

FLOOR PLAN / DETAILS

DATE:	Nov. 15, 2005
SCALE:	AS SHOWN
DRAWN BY:	J.G./J.W.E.
CHECKED BY:	
JOB NUMBER:	2696
SHEET:	