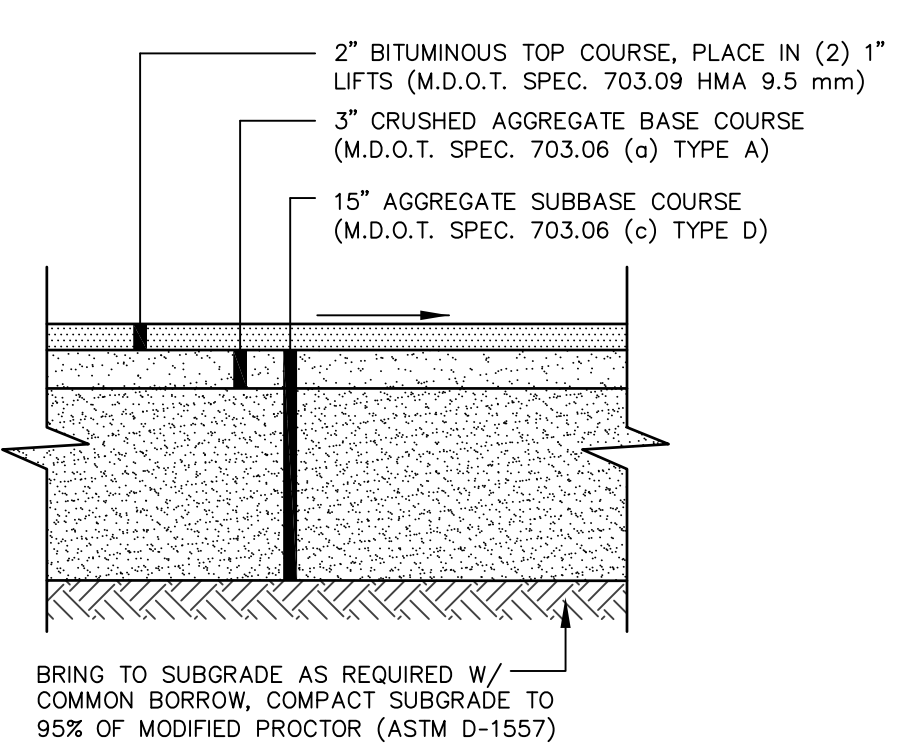


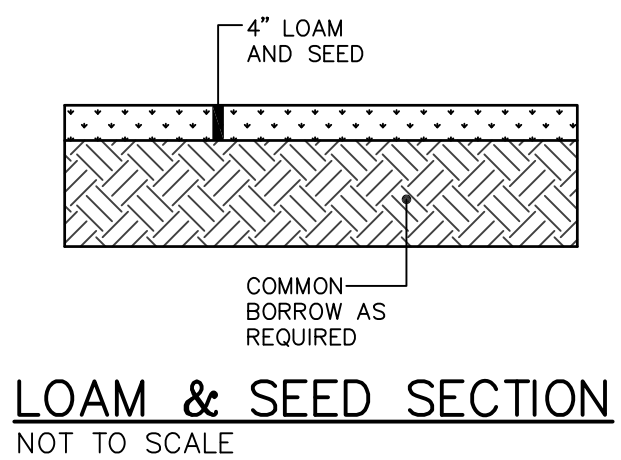
- NOTES:**
1. COMPACT GRAVEL SUBBASE AND BASE COURSES TO 95% OF MAXIMUM DENSITY USING HEAVY ROLLER COMPACTION.
 2. HOT MIX ASPHALT SURFACE COARSE SHALL BE COMPACTED TO 95% OF ITS THEORETICAL MAXIMUM DENSITY (ASTM D-2041). BASE COARSE SHALL BE COMPACTED TO 95% ± 2.5% OF ITS THEORETICAL MAXIMUM DENSITY (ASTM D-2041).
 3. APPLY TACK COAT BETWEEN SUCCESSIVE LIFTS OF BITUMINOUS PAVEMENT.
 4. CONTRACTOR SHALL SET GRADE STAKES MARKING SUBBASE AND FINISH GRADE ELEVATIONS FOR CONSTRUCTION REFERENCE.

PAVEMENT SECTION
NOT TO SCALE

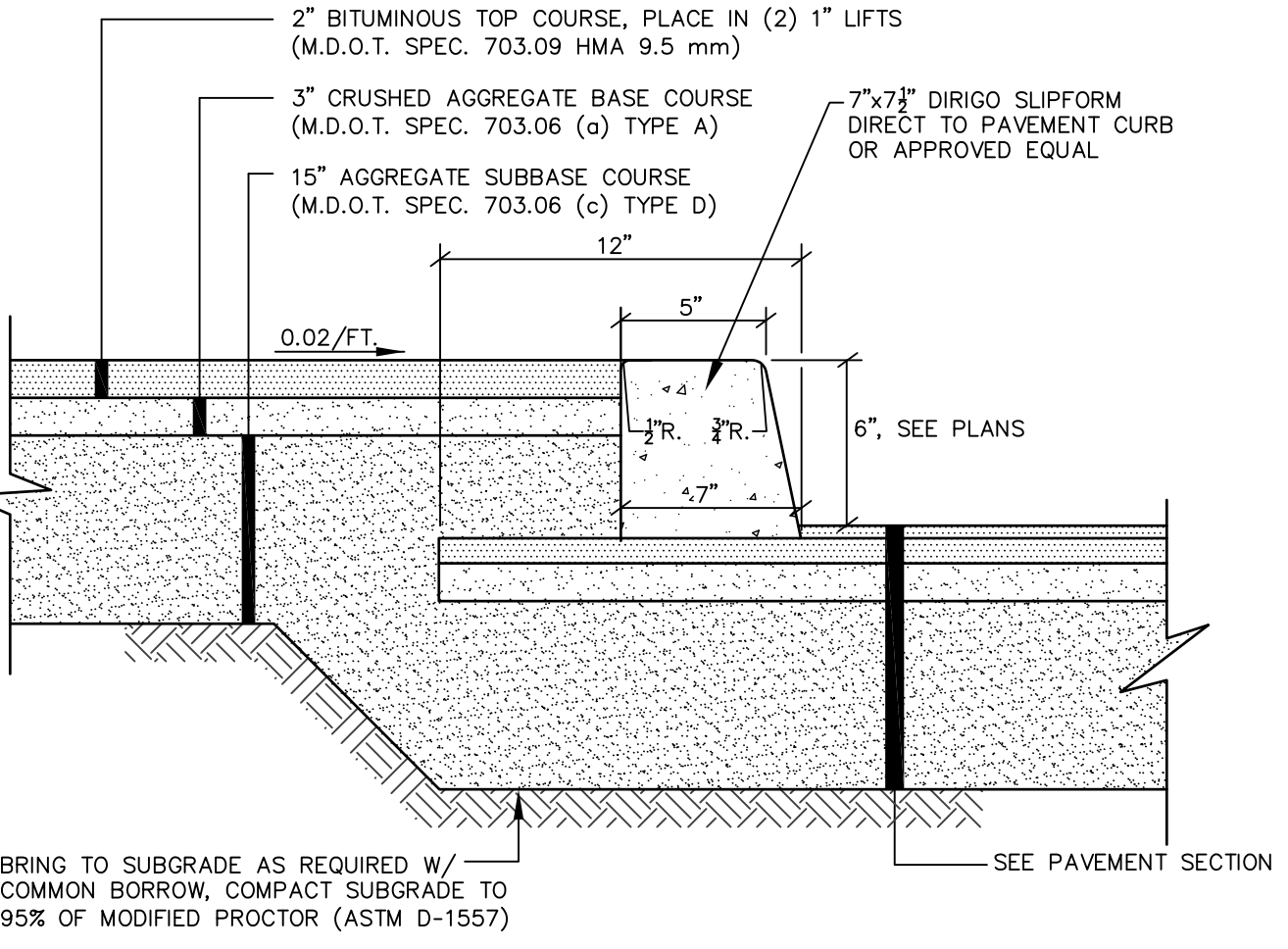


- NOTES:**
1. COMPACT GRAVEL SUBBASE AND BASE COURSES TO 95% OF MAXIMUM DENSITY USING HEAVY ROLLER COMPACTION.
 2. HOT MIX ASPHALT SURFACE COARSE SHALL BE COMPACTED TO 95% OF ITS THEORETICAL MAXIMUM DENSITY (ASTM D-2041). BASE COARSE SHALL BE COMPACTED TO 95% ± 2.5% OF ITS THEORETICAL MAXIMUM DENSITY (ASTM D-2041).
 3. APPLY TACK COAT BETWEEN SUCCESSIVE LIFTS OF BITUMINOUS PAVEMENT.
 4. CONTRACTOR SHALL SET GRADE STAKES MARKING SUBBASE AND FINISH GRADE ELEVATIONS FOR CONSTRUCTION REFERENCE.

PEDESTRIAN (WALKWAY) PAVING
NOT TO SCALE

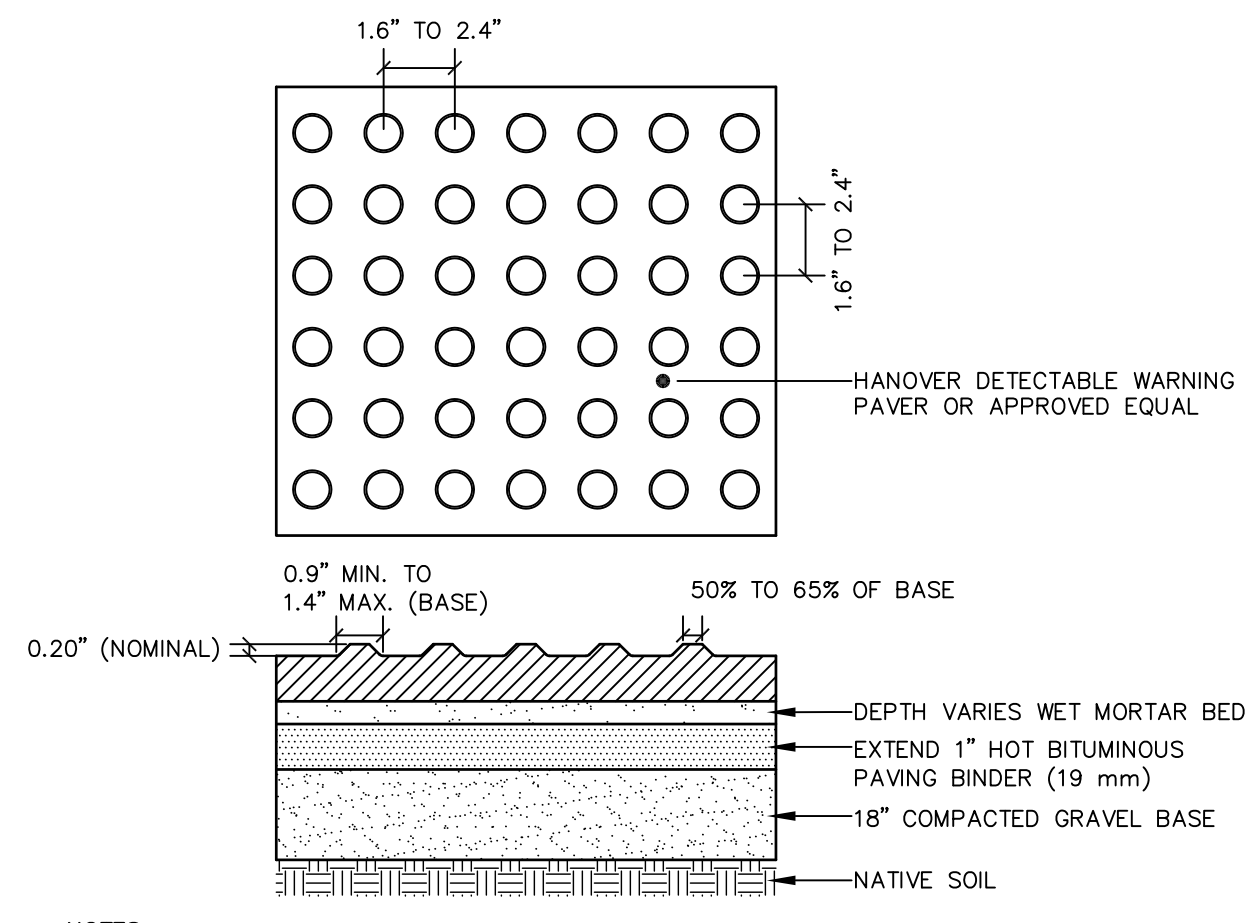


LOAM & SEED SECTION
NOT TO SCALE



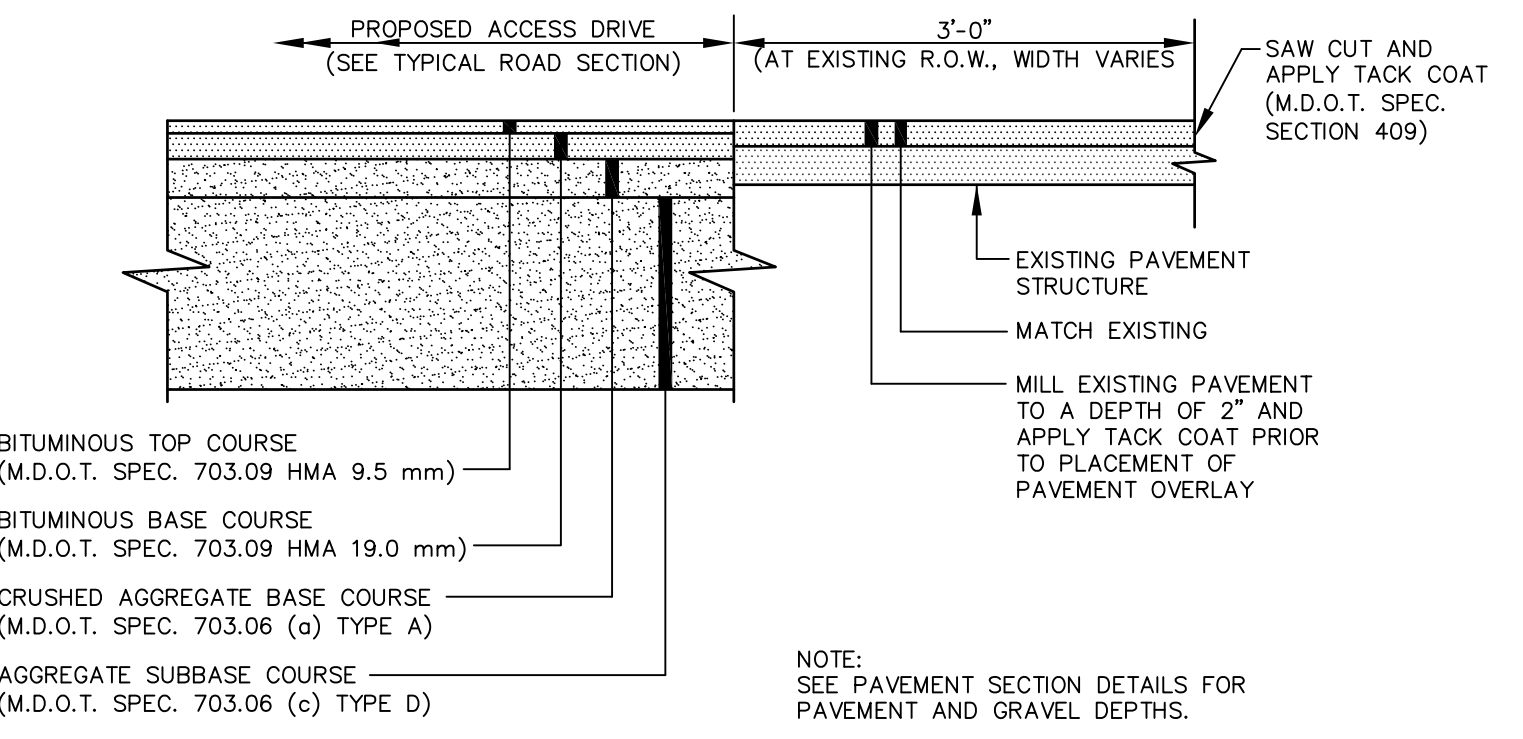
- NOTES:**
1. COMPACT GRAVEL SUBBASE AND BASE COURSES TO 95% OF MAXIMUM DENSITY USING HEAVY ROLLER COMPACTION.
 2. HOT MIX ASPHALT SURFACE COARSE SHALL BE COMPACTED TO 95% OF ITS THEORETICAL MAXIMUM DENSITY (ASTM D-2041). BASE COARSE SHALL BE COMPACTED TO 95% ± 2.5% OF ITS THEORETICAL MAXIMUM DENSITY (ASTM D-2041).
 3. APPLY TACK COAT BETWEEN SUCCESSIVE LIFTS OF BITUMINOUS PAVEMENT.
 4. CONTRACTOR SHALL SET GRADE STAKES MARKING SUBBASE AND FINISH GRADE ELEVATIONS FOR CONSTRUCTION REFERENCE.

PEDESTRIAN WALK W/ CURB
NOT TO SCALE

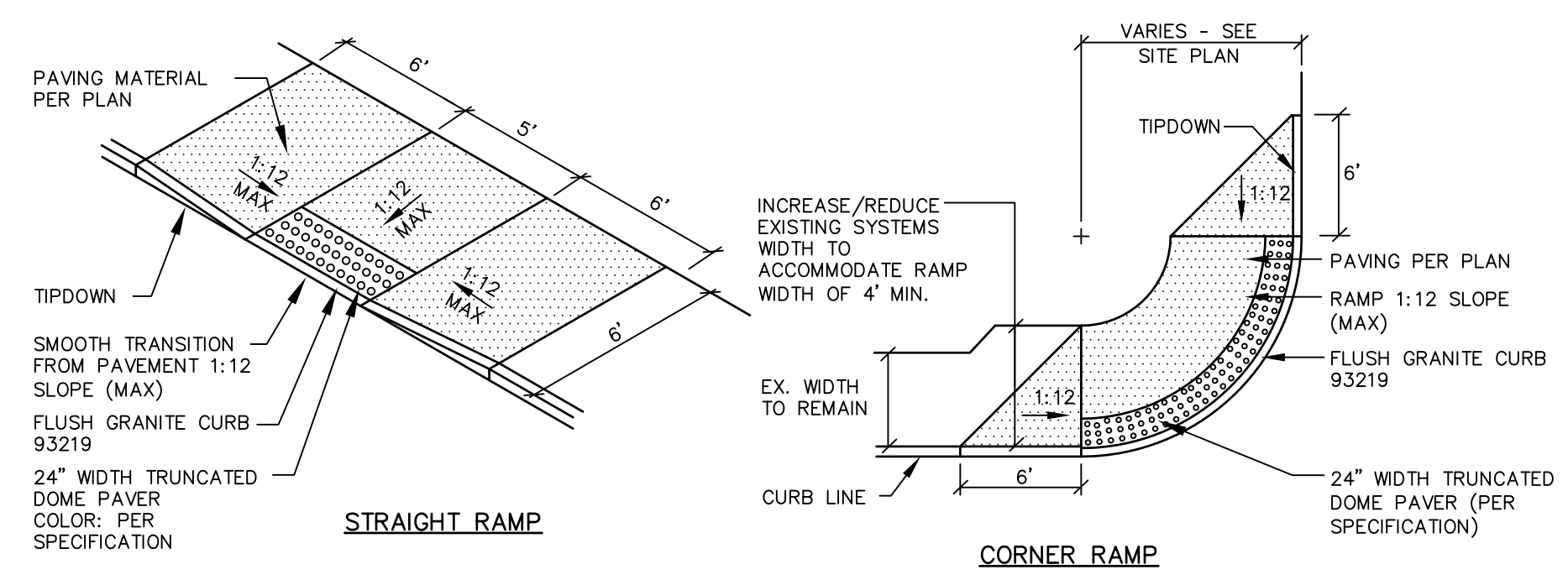


- NOTES:**
1. PAVERS ARE INSTALLED IN A WET MORTAR BED OVER HOT BITUMINOUS OR COMPACTED FILL BASE. THE WET MORTAR BED IS REQUIRED TO LEVEL THE PAVERS.
 2. SPACING REQUIREMENTS:
 - A. TRUNCATED DOME PAVERS HAVE A BASE DIAMETER OF 0.9" (23 MM) MINIMUM TO 1.4" (36 MM) MAXIMUM, A TOP DIAMETER OF 50% OF THE BASE DIAMETER MINIMUM TO 65% OF THE BASE DIAMETER MAXIMUM, AND A NOMINAL DOME HEIGHT OF 0.2" (5 MM).
 - B. TRUNCATED DOME PAVERS IN A DETECTABLE WARNING SURFACE HAVE A CENTER-TO-CENTER SPACING OF 1.6" (41 MM) MINIMUM AND 2.4" (61 MM) MAXIMUM, AND A BASE-TO-BASE SPACING OF 0.65" (16 MM) MINIMUM, MEASURED BETWEEN THE MOST ADJACENT DOMES ON THE SQUARE GRID.
 - C. DETECTABLE WARNING SURFACES SHALL BE COLORED PER SPECIFICATION.

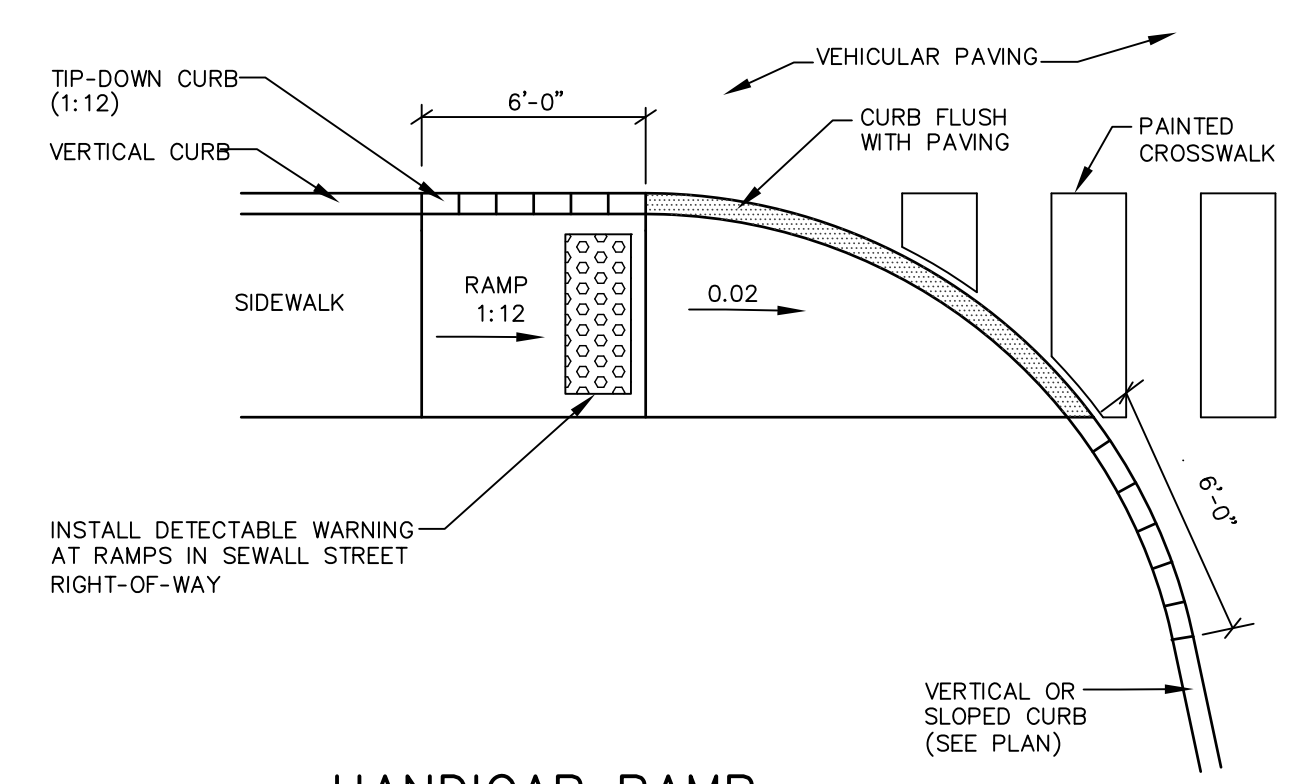
TRUNCATED DOME DETAIL
NOT TO SCALE



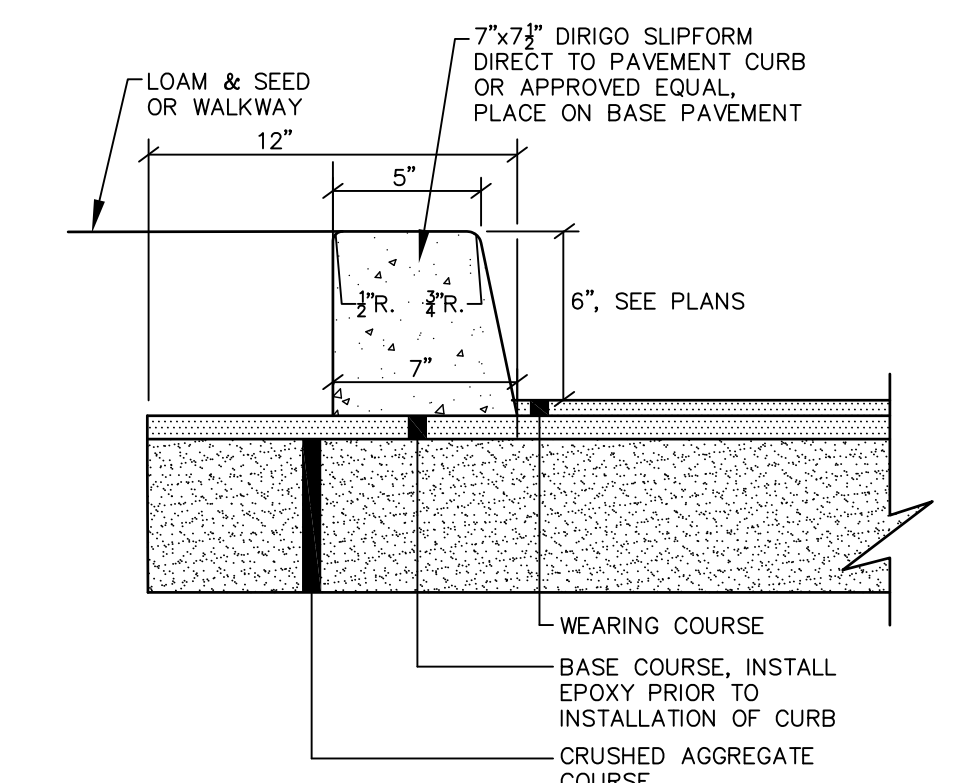
TYPICAL PAVEMENT JOINT AT PUBLIC R.O.W.
NOT TO SCALE



HANDICAP RAMP WITH TRUNCATED DOME BAND
NOT TO SCALE

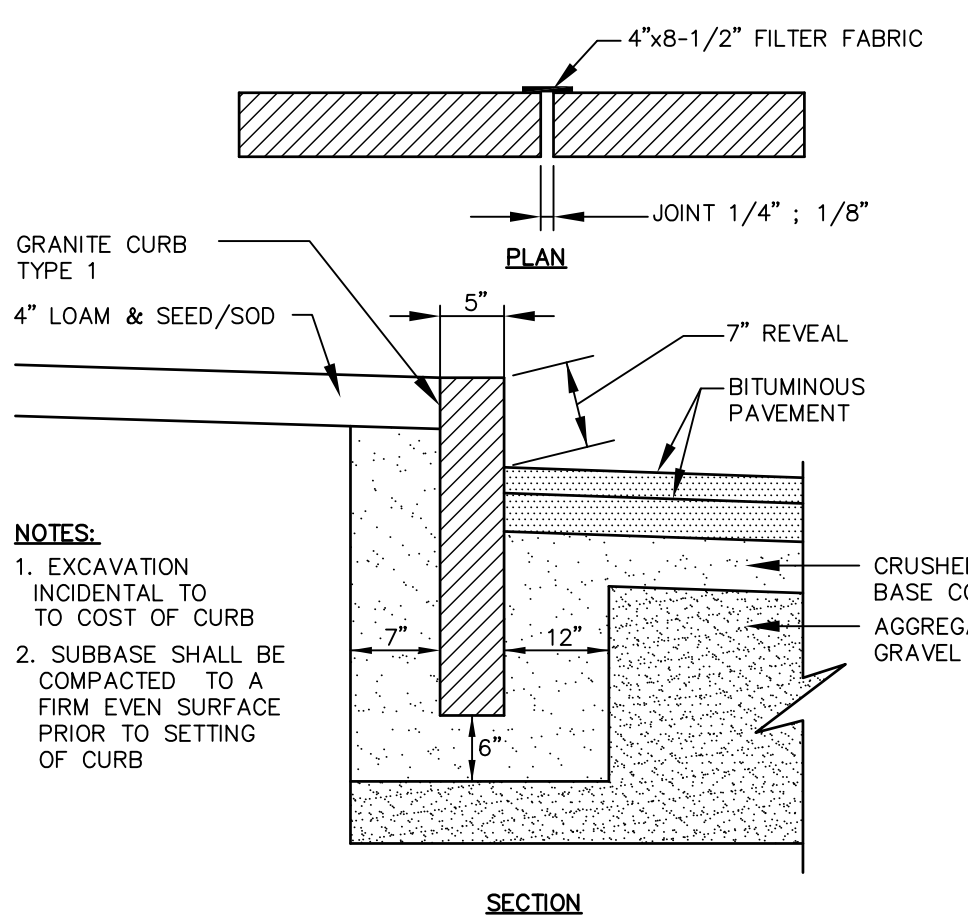


HANDICAP RAMP
NOT TO SCALE

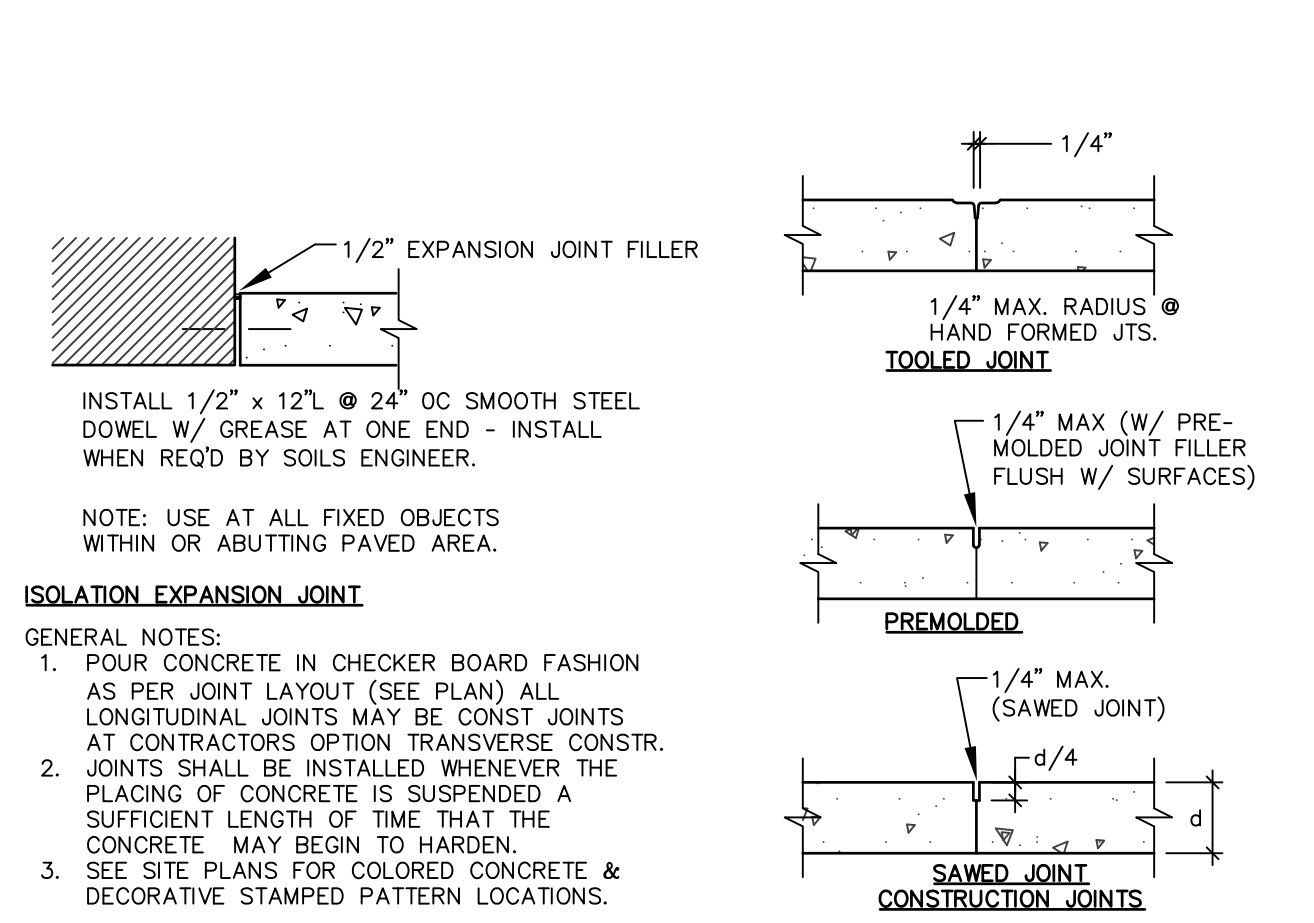


- NOTES:**
1. SEE TYPICAL ACCESS DRIVE SECTION FOR ROADWAY MATERIAL SPECIFICATIONS AND DEPTHS.
 2. 6 inch TIPDOWNS SHALL BE PROVIDED AS SHOWN ON PLANS.

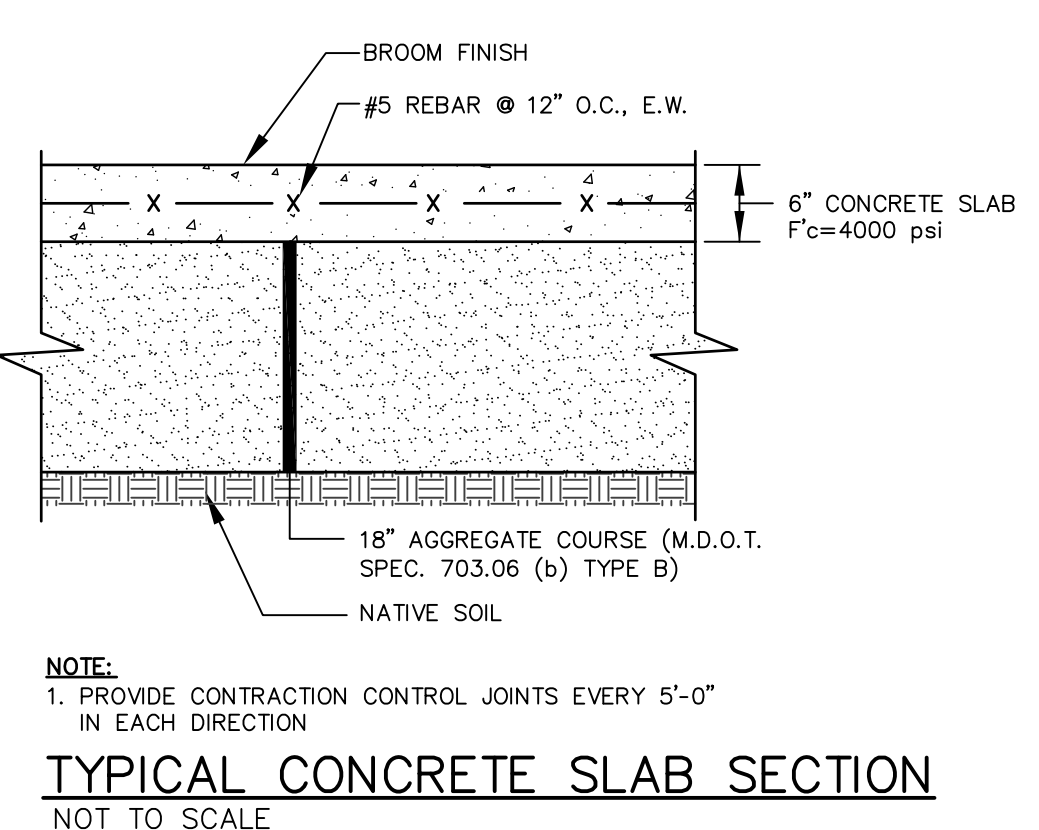
SLIPFORM CURB SECTION
NOT TO SCALE



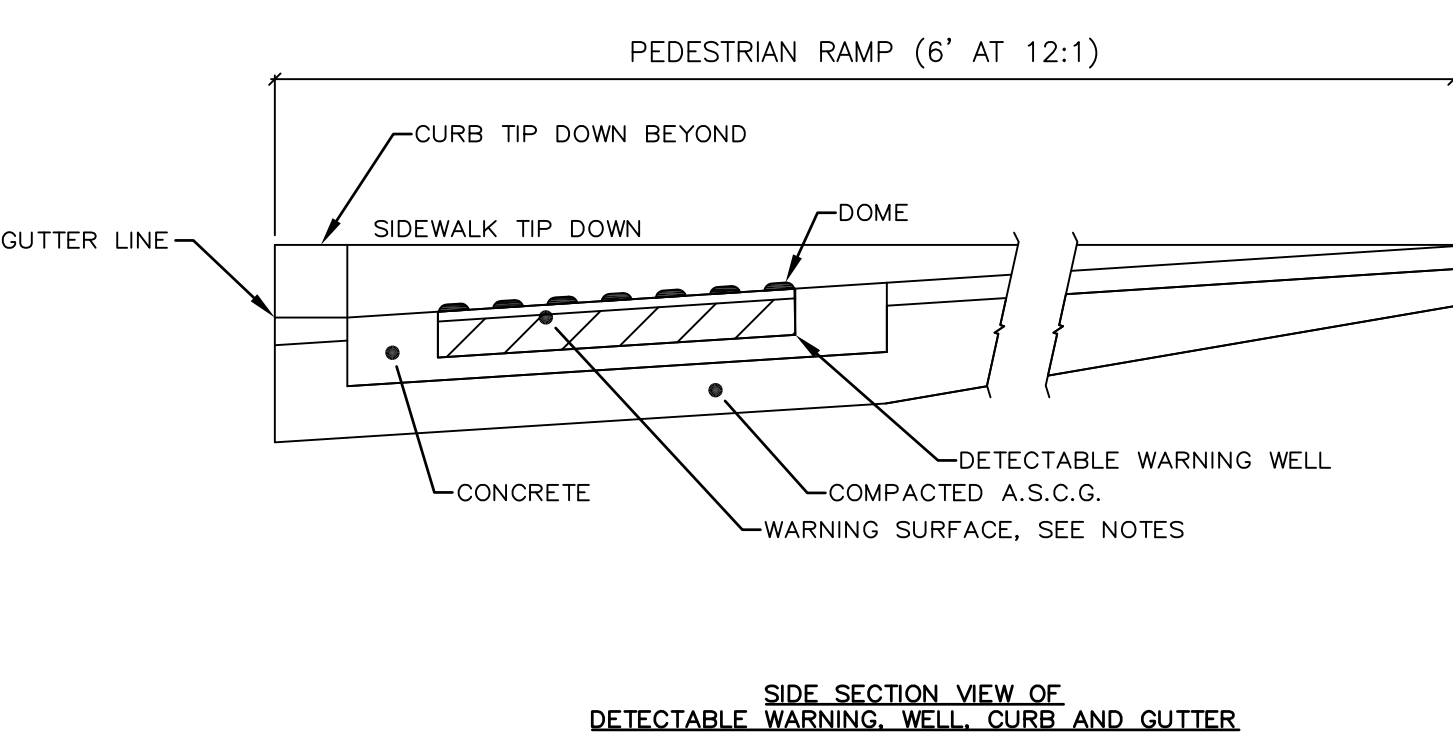
CONTROL JOINT DETAILS
NOT TO SCALE



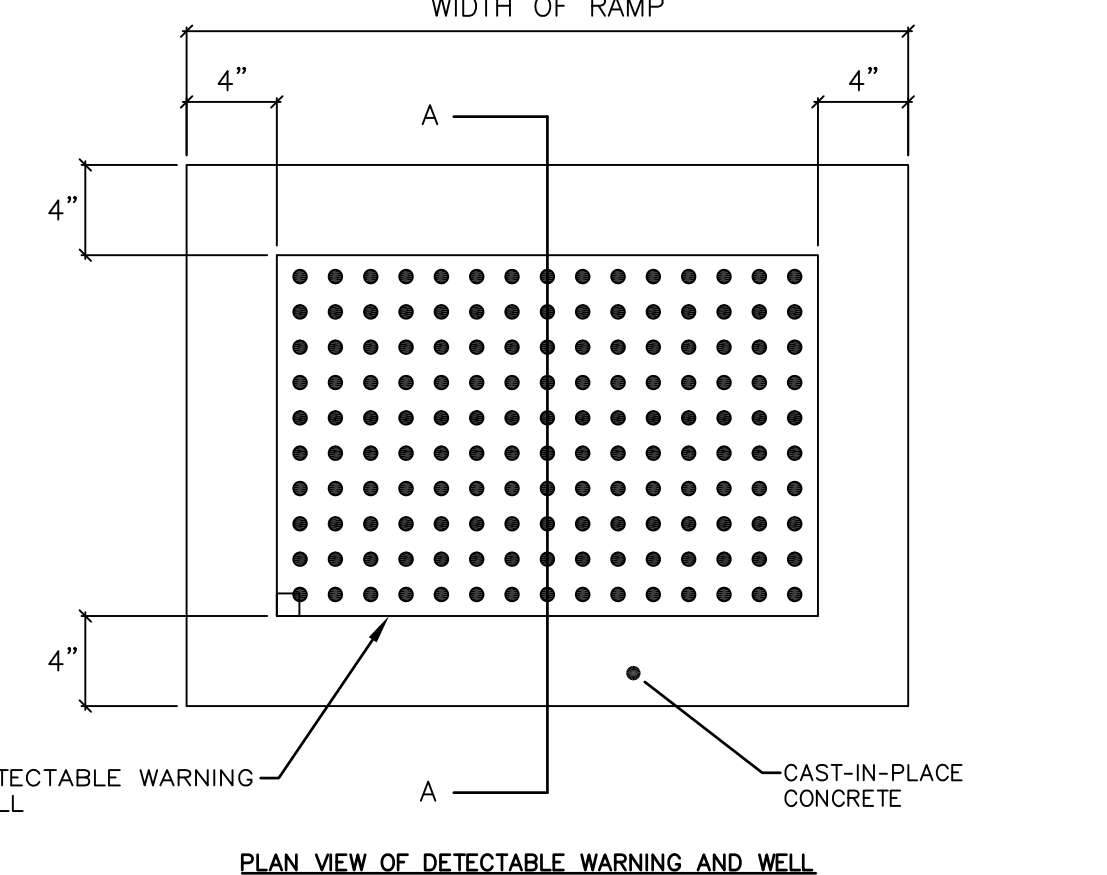
CONTROL JOINT DETAILS
NOT TO SCALE



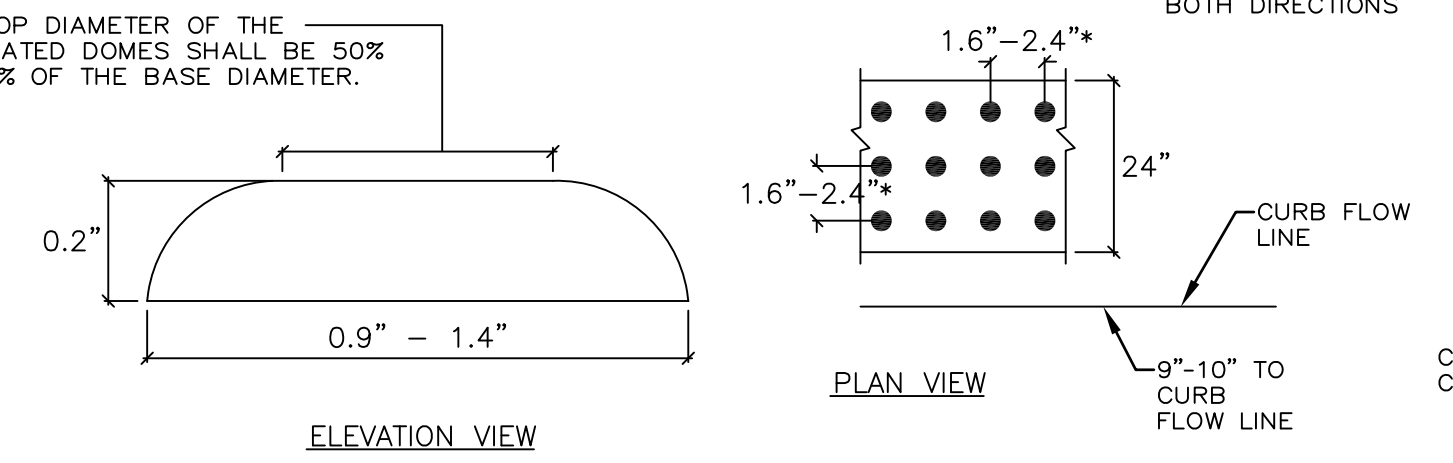
TYPICAL CONCRETE SLAB SECTION
NOT TO SCALE



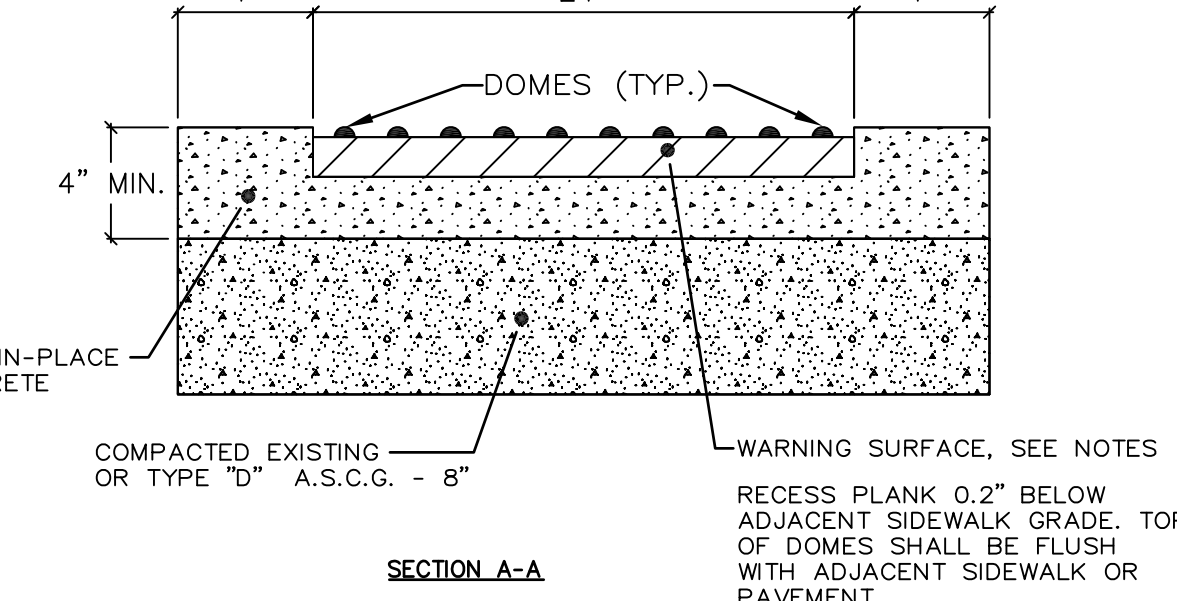
PEDESTRIAN RAMP (6 inch AT 12:1)
NOT TO SCALE



PLAN VIEW OF DETECTABLE WARNING AND WELL
NOT TO SCALE



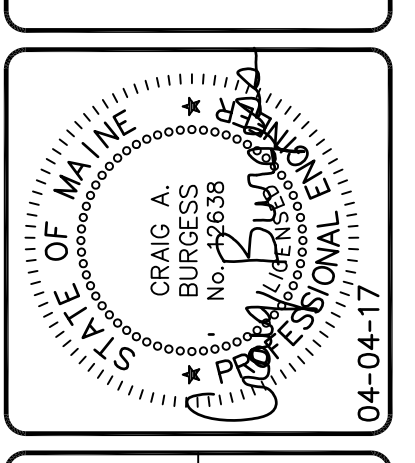
DOME AND DETECTABLE WARNING DETAILS
NOT TO SCALE



SECTION A-A
NOT TO SCALE

- NOTE:**
1. CAST-IN-PLACE CONCRETE SHALL BE MINIMUM 4,000 PSI AND REINFORCED WITH FIBER MESH @ 3 LBS./CY.
 2. ALL DETECTABLE WARNING AREAS SHALL START 9" - 10" FROM THE FLOW LINE OF THE CURB, BE 24" IN DEPTH, AND COVER THE COMPLETE WIDTH OF THE RAMP AREA ONLY.
 3. DETECTABLE WARNING PLATES SHALL BE CAST-IN-PLACE REPLACEABLE TACTILE OAVERS, BY ADA SOLUTIONS, INC. (WWW.ADATILE.COM), COLOR: YELLOW

DETECTABLE WARNING SURFACE
NOT TO SCALE



DESIGNED	CHECKED
CAB	MAM
REVIEWED FOR CITY REVIEW & APPROVAL	
REV. BY:	DATE:
A. CAB	04-04-17
SUBMITTED FOR CITY REVIEW & APPROVAL	
STATUS:	
THIS PLAN SHALL NOT BE MODIFIED WITHOUT WRITTEN PERMISSION FROM SEBAGO TECHNICS, INC. ANY ALTERATIONS AUTHORIZED OR OTHERWISE, SHALL BE AT THE USER'S SOLE RISK AND WITHOUT LIABILITY TO SEBAGO TECHNICS, INC.	

SEBAGO TECHNICS
WWW.SEBAGO-TECHNICS.COM
250 Goddard Rd.
Suite B
LeWistown, ME 04106
Tel. 207-783-5656

PROPOSED OFFICE BUILDING
473 & 483 RIVERSIDE ST
PORTLAND, ME
FOR: **ACADIA LENDING GROUP**
180 RIVERSIDE ST. UNIT 48
PORTLAND, ME 04103

PROJECT NO.	SCALE
16078	NTS