

**GENERAL NOTES:**

1. All work shall be in accordance with the 2009 IRC, 2009 State Building Code, 1998 Maine State Plumbing Code, ASHRAE, U.L. 199A tables and all local, state or federal codes.
2. All required City and State permits must be obtained before any work starts.
3. Structural, mechanical, electrical and plumbing design and installation to be performed in accordance with local, state and federal standards.
4. Bid of contractor to construct per drawings with approval of the engineering professional.
5. Building shall have approved smoke detectors in accordance with 10509-101.

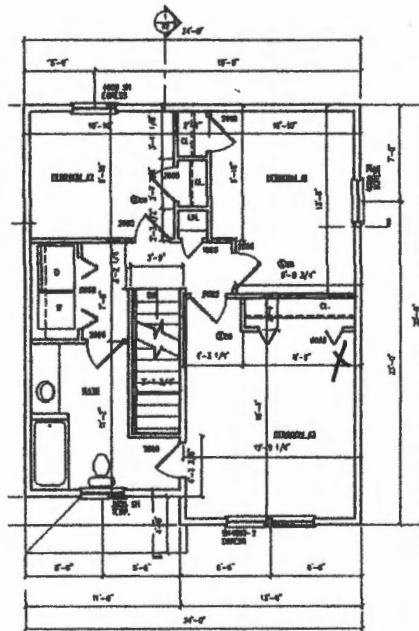


Inspection Division

Date: 10/10/14

HEADER SCHEDULE	
HEADER OPENING	HEADER SIZE
0" - 2'-0"	C1 - 2x6
2'-0" - 4'-0"	C2 - 2x8
4'-0" - 6'-0"	C3 - 2x10
6'-0" - 7'-0"	C4 - 2x12

NOTE: TOPPING SHALL BE 1/2" THICK 1500 PSI CONCRETE  
 1) 2x6 JOIST 24" ON CENTER UP TO 2'-0" FLOOR OPENING  
 2) 2x8 JOIST 24" ON CENTER UP TO 4'-0" FLOOR OPENING  
 3) 2x10 JOIST 24" ON CENTER UP TO 6'-0" FLOOR OPENING  
 4) 2x12 JOIST 24" ON CENTER UP TO 7'-0" FLOOR OPENING



**SECOND FLOOR PLAN**  
 608 S.F. SCALE: 1/4"=1'-0"

24x30 COLONIAL  
 PORTLAND, MAINE  
 FOUNDATION/TRACING PLAN  
 FIRST FLOOR PLAN /  
 SECOND FLOOR PLAN  
 DETAILS  
 10/10/14

A1

*X place 9" from ceiling  
 18" from closet*

*L SN 090 HSV4  
 11 7/32" high  
 35 1/4" long  
 8 9/32" deep*