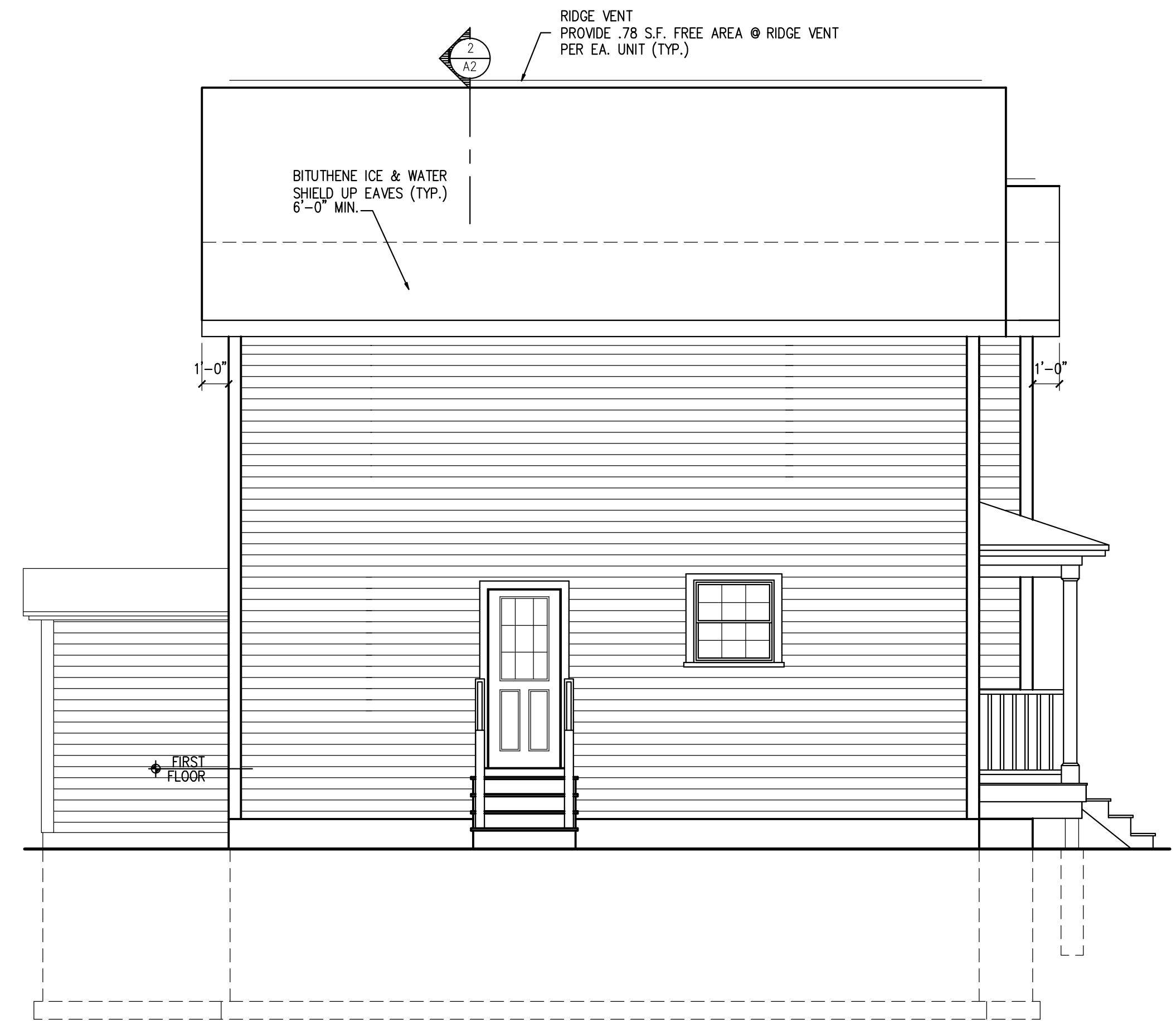
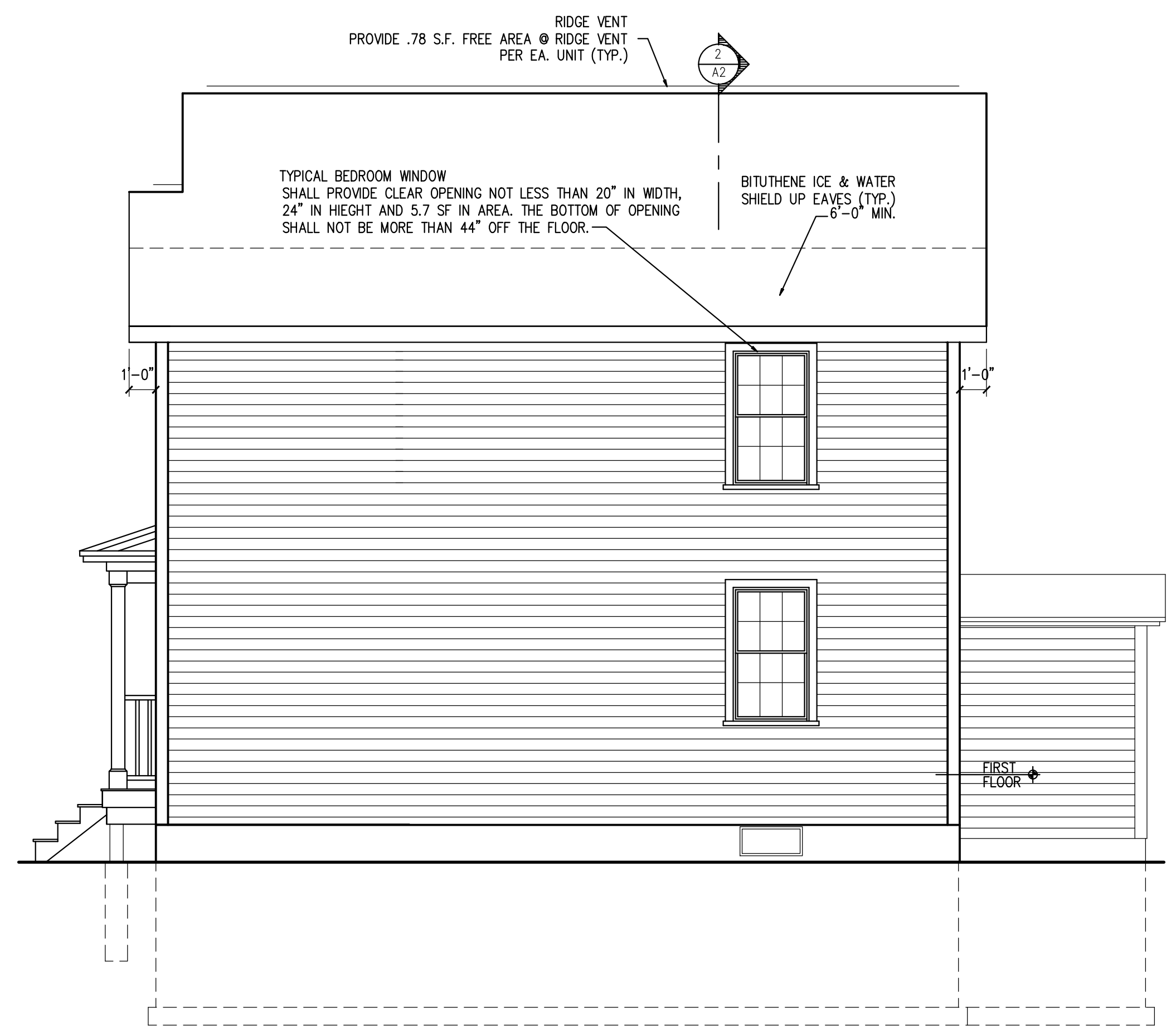


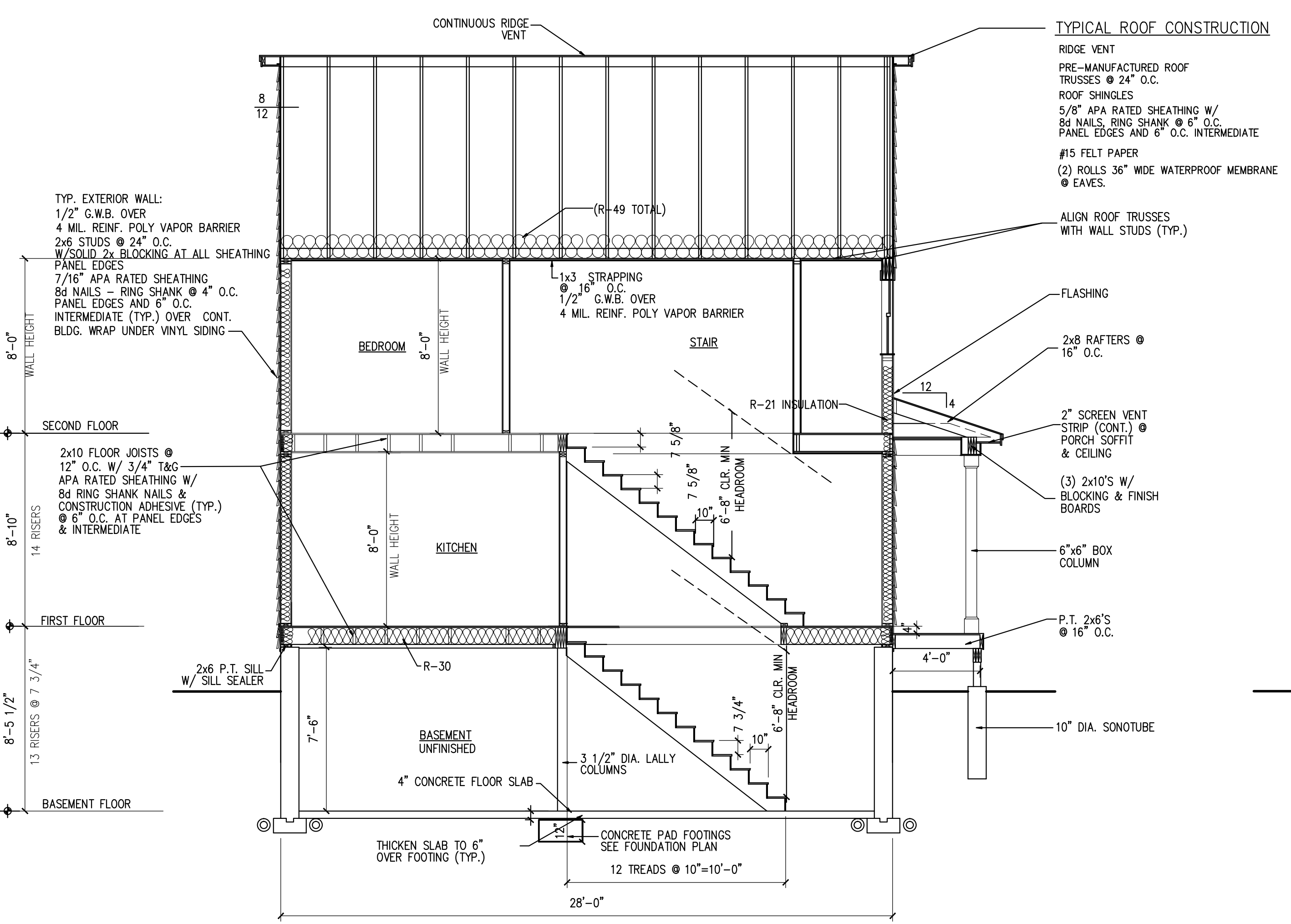
SECTION THRU HOUSE
SCALE : 1/4" = 1' - 0"



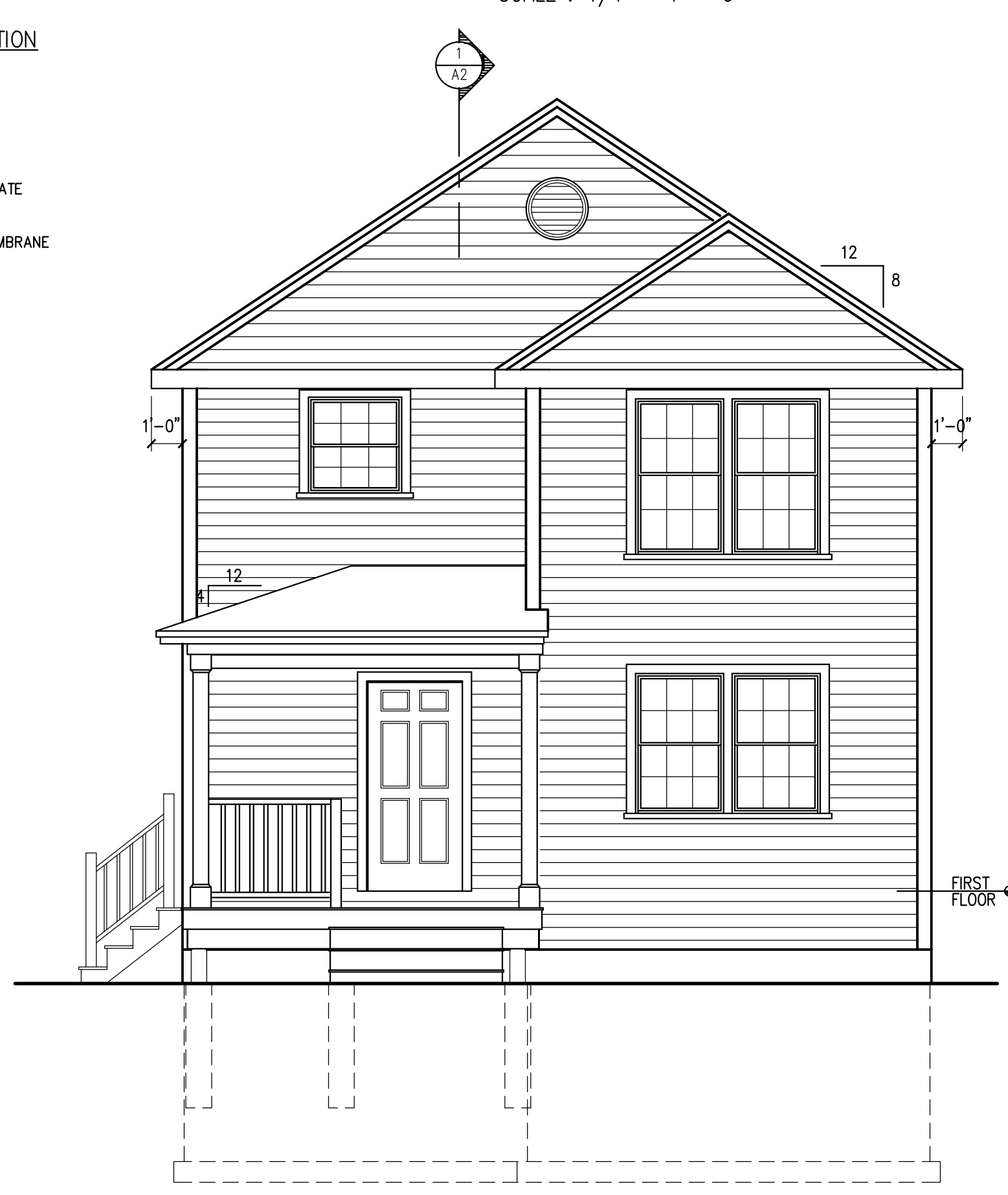
LEFT SIDE ELEVATION
SCALE : 1/4" = 1' - 0"



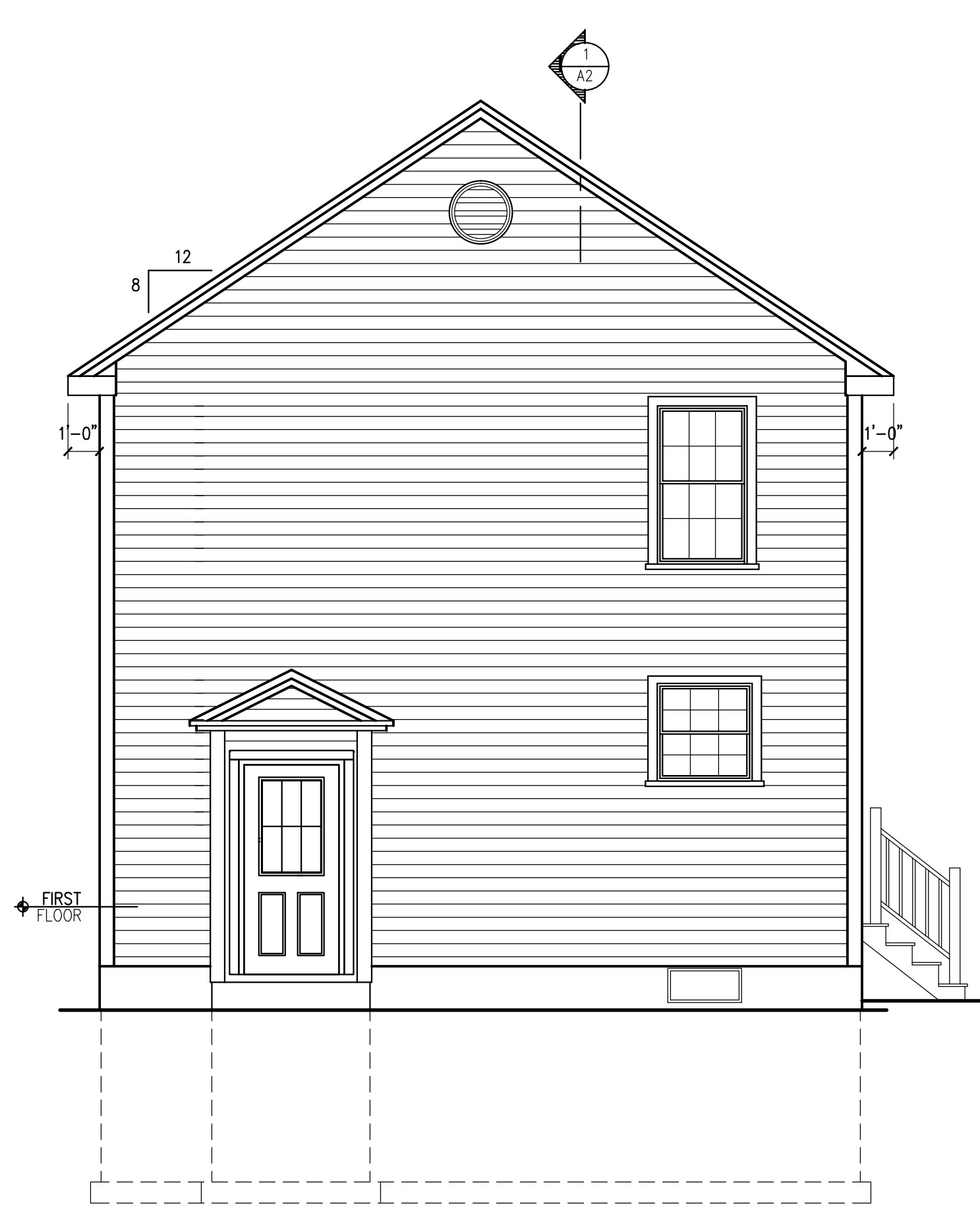
RIGHT SIDE ELEVATION
SCALE : 1/4" = 1' - 0"



SECTION THRU HOUSE
SCALE : 1/4" = 1' - 0"



FRONT ELEVATION
SCALE : 1/4" = 1' - 0"



REAR ELEVATION
SCALE : 1/4" = 1' - 0"

24x30 COLONIAL
PORTLAND, MAINE

DRAWINGS THIS SHEET
ELEVATIONS
BUILDING SECTIONS

DATE
09/08/14

A2