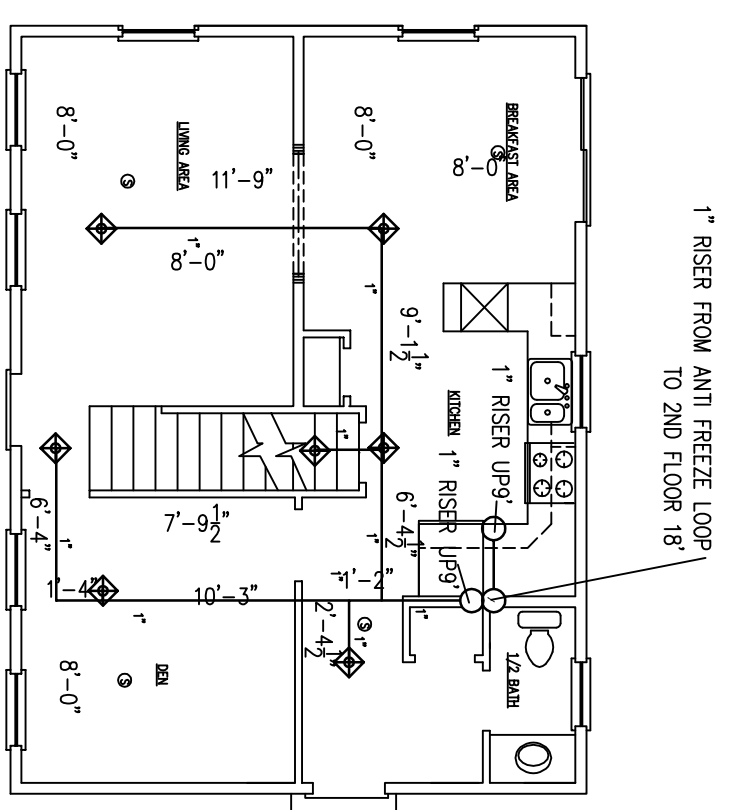


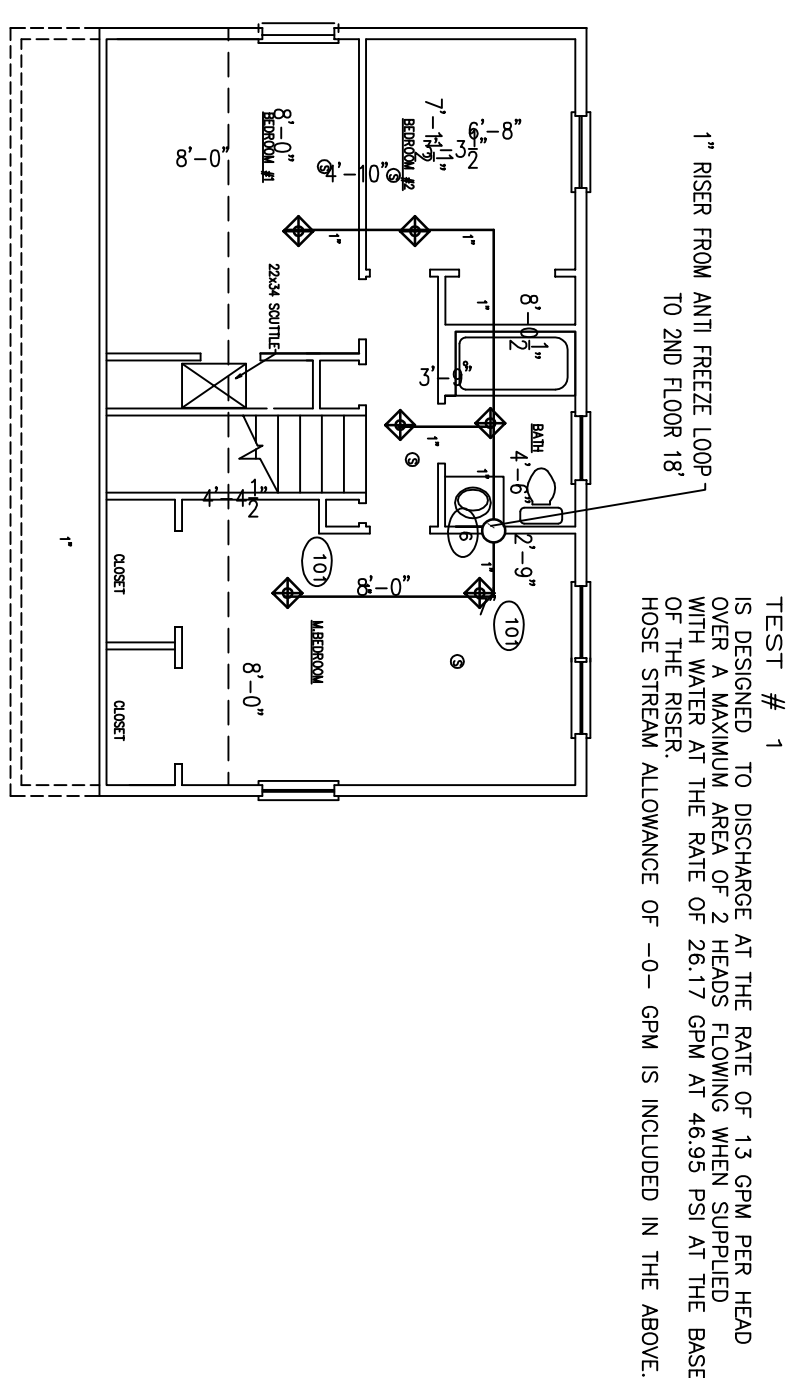
BASEMENT FLOOR 4 K= 4.9 RESIDENTIAL GB-QR 155F PENDENT SPRINKLER HEADS RQD.

SCALE: 1/8"=1'-0"



FIRST FLOOR 7 K= 4.9 RESIDENTIAL GB-QR 155F PENDENT SPRINKLER HEADS RQD.

SCALE: 1/8"=1'-0"



SECOND FLOOR 6 K= 4.9 RESIDENTIAL GB-QR 155F PENDENT SPRINKLER HEADS RQD.

SCALE: 1/8"=1'-0"

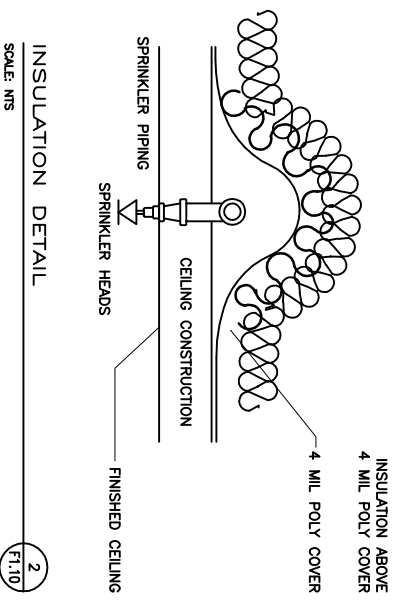
WATER PRESSURE INFORMATION SUPPLIED BY PORTLAND WATER DEPARTMENT 9-10-2012 11:00 AM

WATER PRESSURE INFORMATION	
STATIC	75 psi
RESIDUAL	58 psi
PISTON	n/a
COEFFICIENT OF	
OUTLET	N/A
FLOW	1113 gpm

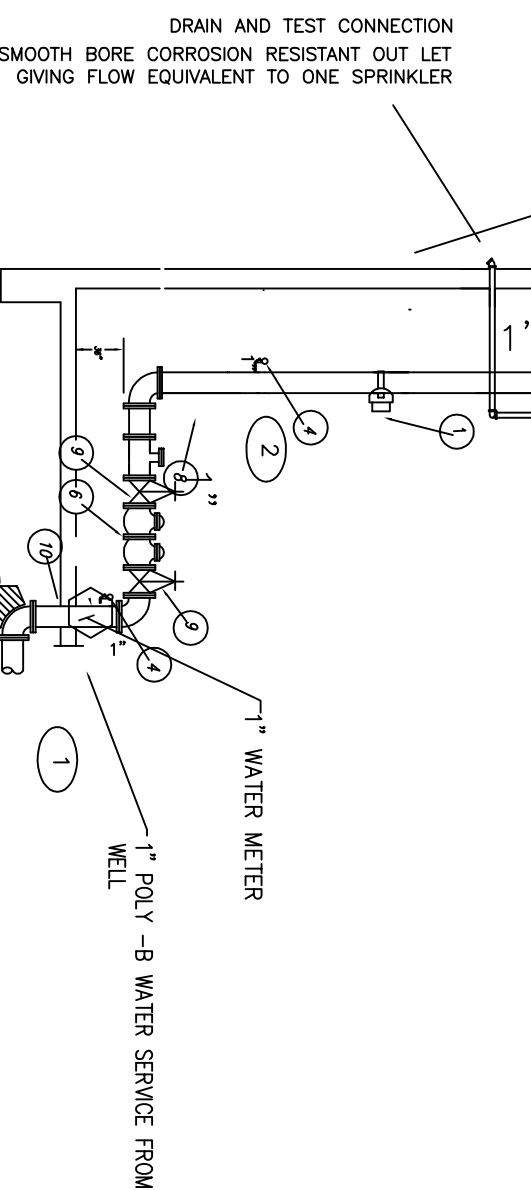
NOTE: ANTI FREEZE TO MEET THE REQUIREMENTS OF THE STATE OF MAINE  
PREMIXES GLYCERINE BASED ANTIFREEZE ONLY

NOTE APPROX. 12 GAL OF ANTIFREEZE CAPACITY IN SYSTEM

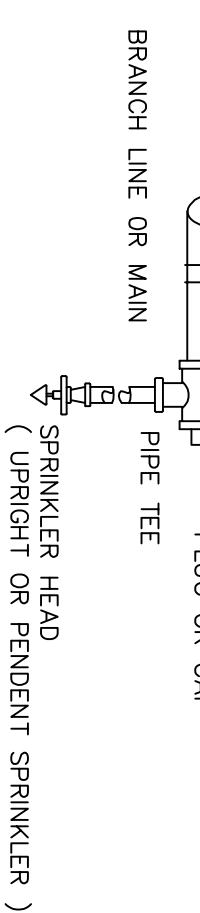
FDC NOT REQUIRED BY CODE BUT MAY BE REQUIRED  
BY LOCAL AUTHORITY  
AUDIO DEVICE NOT REQUIRED BUT RECOMMEND



Model	Flow (GPM)	Response Time (min)	Typical Response
Standard	1.13	1.15	1-1.15
Quick Response	1.13	0.95	1-0.95
ESFR	1.13	0.15	1-0.15
ESFR	1.13	0.15	1-0.15
ESFR	1.13	0.15	1-0.15
ESFR	1.13	0.15	1-0.15
ESFR	1.13	0.15	1-0.15
ESFR	1.13	0.15	1-0.15
ESFR	1.13	0.15	1-0.15
ESFR	1.13	0.15	1-0.15

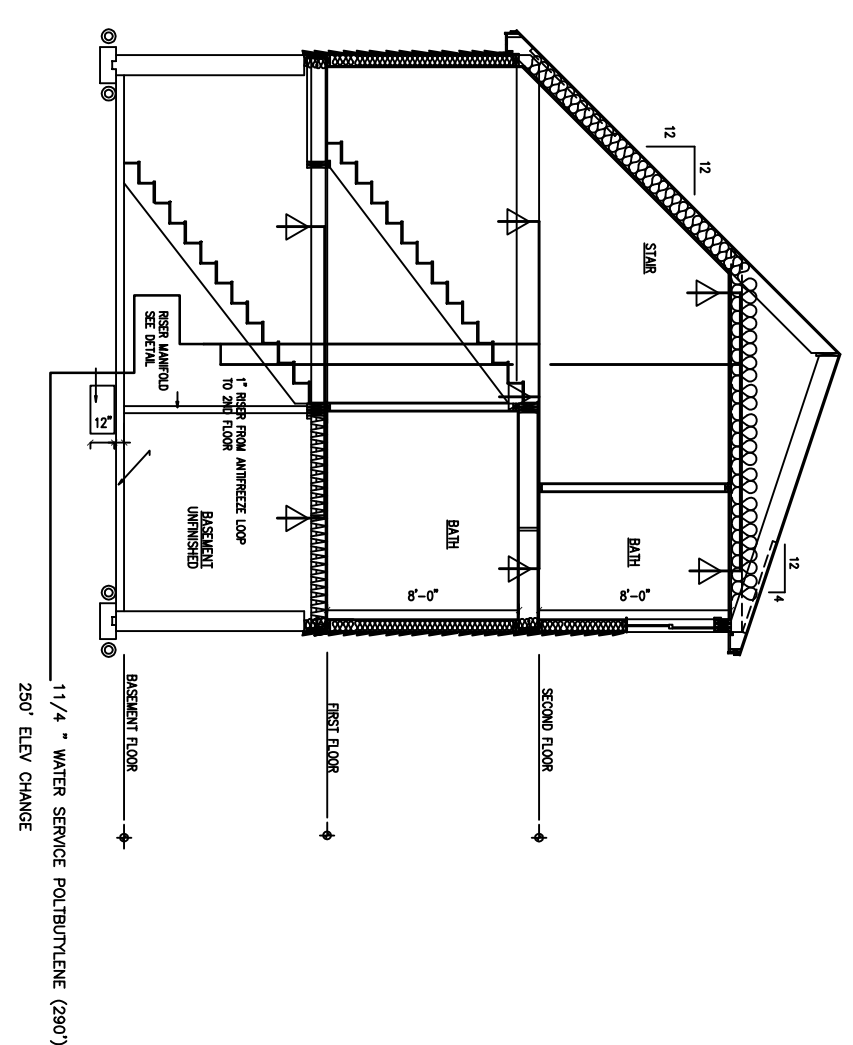


ITEM	DESCRIPTION
1.	FLOW SWITCH (WITH 30 SEC DELAY)
4.	WATER PRESSURE GAUGE (TYP. FOR 2)
5.	CHECK VALVE
6.	REDUCED PRESSURE ZONE CHECK ASSEMBLY
7.	REDUCED PRESSURE ZONE CHECK ASSEMBLY WITH BYPASS VALVE
8.	1" MAIN DRAIN VALVE
9.	1" MAIN DRAIN
10.	COSMET VALVE WITH SUPERSONIC SWITCH
11.	1" INSPECTIONS TEST VALVE
12.	1" INSPECTIONS TEST VALVE
13.	ELEC BELL



TYPICAL END FLUSHING/DRAIN DETAIL N.T.S.

SECTION SCALE: 1/8"=1'-0"



HYDRAULIC CALCULATIONS

HYDRAULIC CALCULATIONS FOR

16 CASTINE ROAD  
PORTLAND MAINE 04106  
CONTRACT NO. 213010  
02-02-2013

DESIGN DATA  
OCCUPANCY CLASSIFICATION: RESIDENTIAL  
DESIGN APPLICATION: SEE HEAD LISTING  
DESIGN SPRINKLER TYPE: RESIDENTIAL  
SPECIAL SPRINKLERS CALCULATED: 246 SFT MAX  
IN RACK DEMAND: 246 SFT MAX  
HOST SYSTEM REQUIRED: -0- GPM  
TOTAL DEMAND: 246 SFT

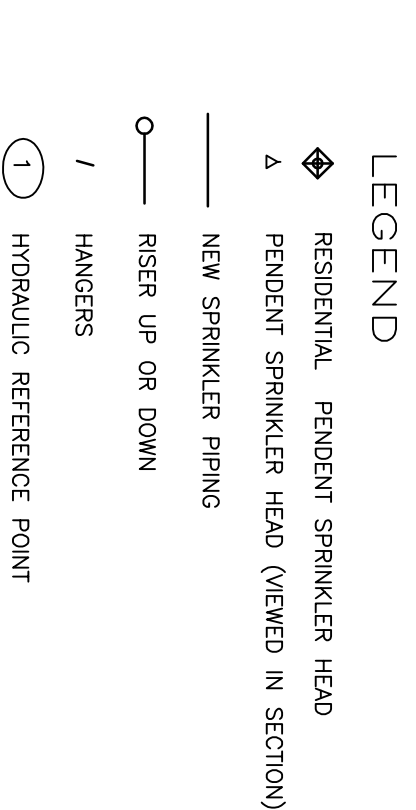
NAME OF CONTRACTOR: TIM DAVIS  
NAME OF DESIGNER: ATLANTIC DESIGN RESOURCES LTD  
ADDRESS: P.O. BOX 496 GREENLAND NH 03840  
PORTLAND MAINE 04106  
AUTHORITY HAVING JURISDICTION: STATE OF MAINE/PORTLAND MAINE

SAMPLE NAME/PLATE

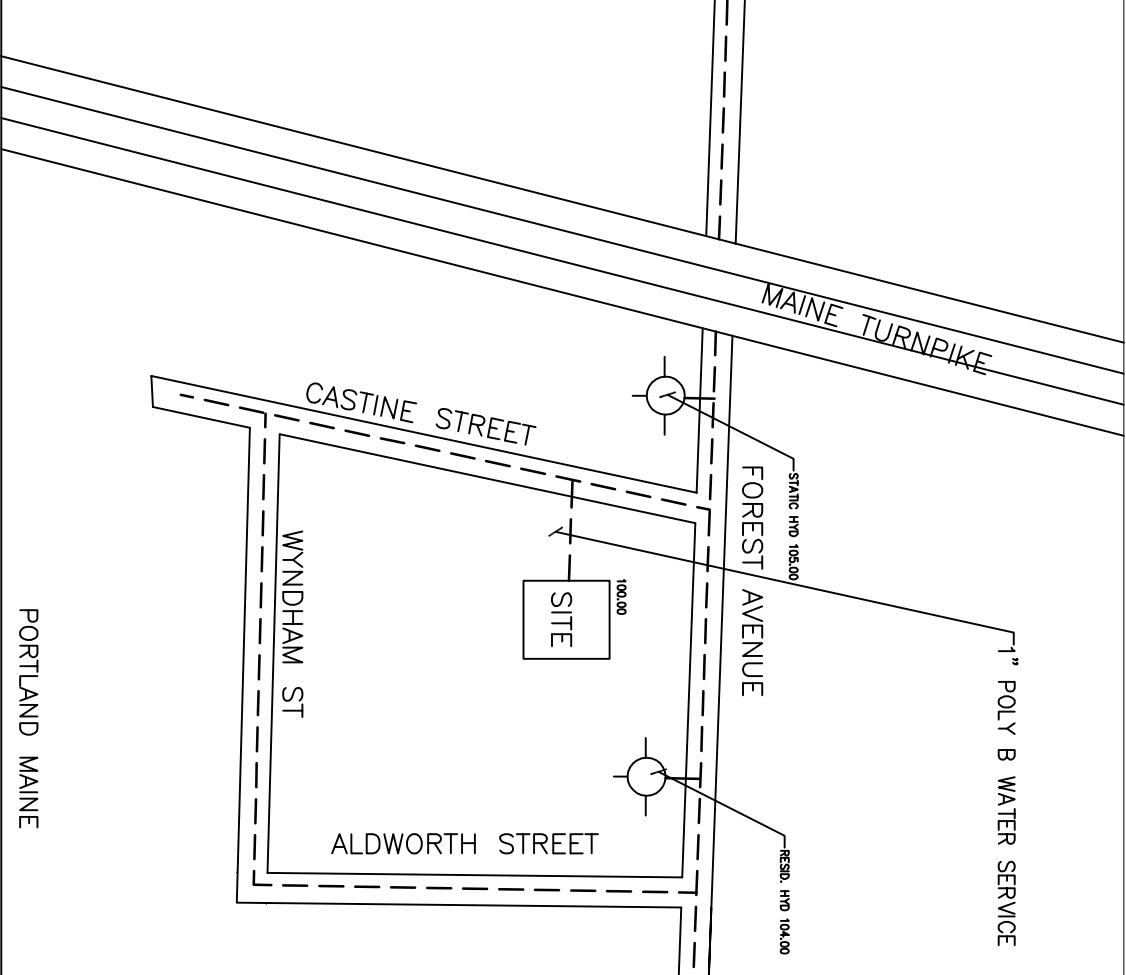
THIS SYSTEM WAS SHOWN ON ATLANTIC DESIGN RESOURCES LTD PROJECT NO. 213010-1 DATED 02-02-2013 10:00 AM  
16 CASTINE ROAD  
PORTLAND MAINE  
213010  
02-02-2013

TEST # 1  
IS DESIGNED TO DISCHARGE AT THE RATE OF 1.3 GPM PER HEAD  
OVER A MAXIMUM AREA OF 2 HEADS FLOWING WHEN SUPPLIED  
WITH WATER AT THE RATE OF 26.17 GPM AT 46.95 PSI AT THE BASE  
OF THE RISER. THE RATE OF 26.17 GPM AT 46.95 PSI AT THE BASE  
HOSE STREAM ALLOWANCE OF -0- GPM IS INCLUDED IN THE ABOVE.

Nominal Pipe Size (in.)	1	1-1/4	1-1/2	2	2-1/2	3	3-1/2	4	5	6	8
Standard	1.13	1.13	1.13	1.13	1.13	1.13	1.13	1.13	1.13	1.13	1.13
Quick Response	1.13	1.13	1.13	1.13	1.13	1.13	1.13	1.13	1.13	1.13	1.13
ESFR	1.13	1.13	1.13	1.13	1.13	1.13	1.13	1.13	1.13	1.13	1.13
ESFR	1.13	1.13	1.13	1.13	1.13	1.13	1.13	1.13	1.13	1.13	1.13
ESFR	1.13	1.13	1.13	1.13	1.13	1.13	1.13	1.13	1.13	1.13	1.13
ESFR	1.13	1.13	1.13	1.13	1.13	1.13	1.13	1.13	1.13	1.13	1.13
ESFR	1.13	1.13	1.13	1.13	1.13	1.13	1.13	1.13	1.13	1.13	1.13
ESFR	1.13	1.13	1.13	1.13	1.13	1.13	1.13	1.13	1.13	1.13	1.13
ESFR	1.13	1.13	1.13	1.13	1.13	1.13	1.13	1.13	1.13	1.13	1.13
ESFR	1.13	1.13	1.13	1.13	1.13	1.13	1.13	1.13	1.13	1.13	1.13



LOCATION MAP



Revisions:	No	Date	By	Description

Scale:	AS NOTED
Drawn By:	RM / MO
Checked By:	RM
Approved By:	
Project No.:	212066
Issued:	FOR REVIEW
Plot Date:	SEE HEADER
File:	213010 FP-1
Dwg No.:	
	<b>FP-1</b>

16 CASTINE ROAD  
PORTLAND MAINE

TIM DAVIS P & H INC  
P.O. BOX 255  
ALFRED 04002

ATLANTIC DESIGN RESOURCES, LLC

P.O. BOX 496 / GREENLAND NH 03840  
603.418.0764 voice / 603.418.6375 fax  
asdrnh@gmail.com