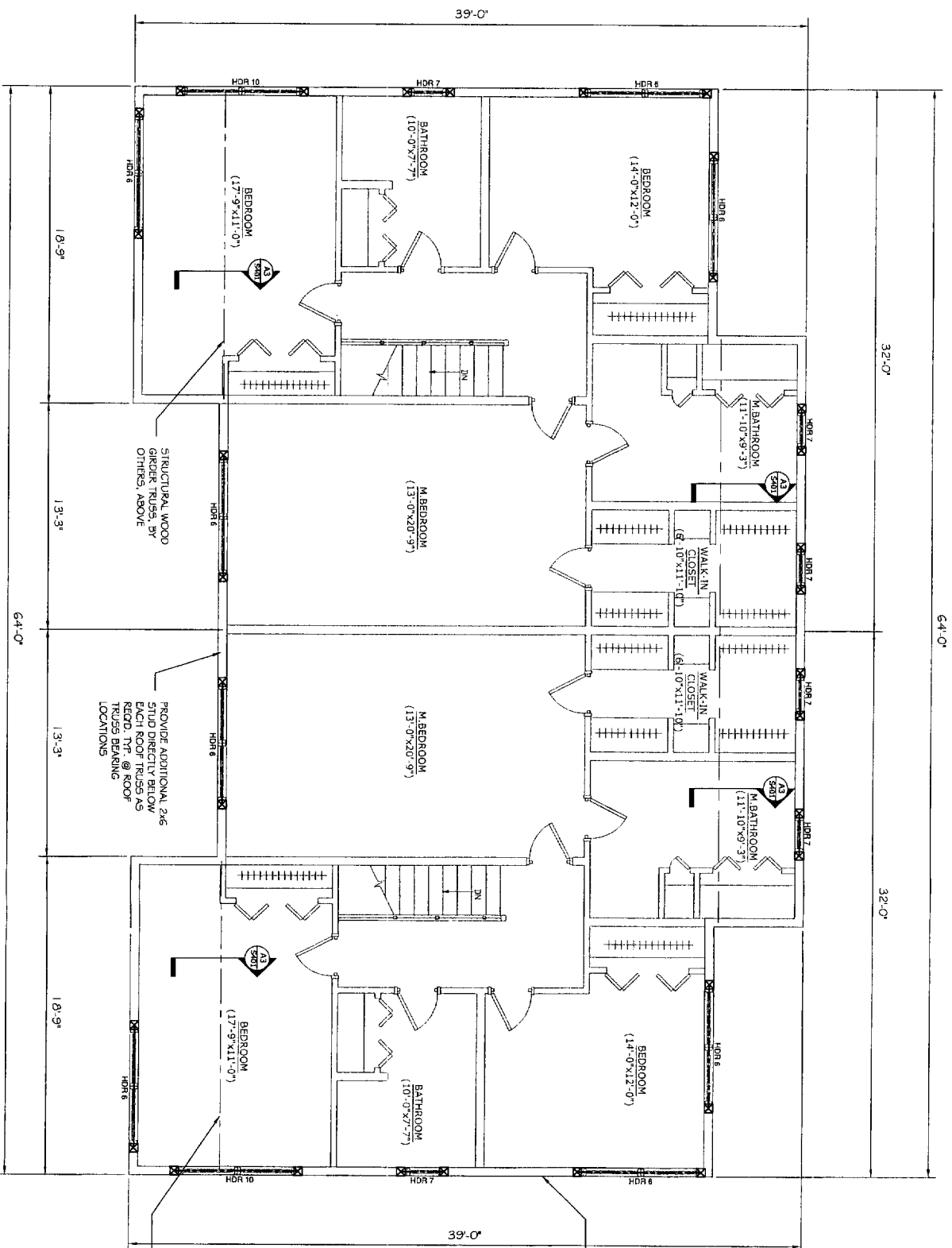


THIS P.E. REVIEW COVERS STRUCTURAL FRAMING MEMBERS SIZES FOR NEW OR MODIFIED STRUCTURE ONLY. INTERNAL MOISTURE PROTECTION, TEMPORARY SHORING AND BRACING, LAYOUT AND LIFE SAFETY REQUIREMENTS HAVE NOT BEEN REVIEWED AND ARE BEYOND THE PURVIEW OF THIS P.E. SEAL.



2x6 EXTERIOR WALL STUDS @ 16 o.c. w/ 1/2" EXTERIOR SHEATHING, TYP.

- GENERAL STRUCTURAL NOTES:
1. ALL P.S.'S ARE 2.0 E. PARALAM UNLESS OTHERWISE NOTED. BY TRUS-JOIST MCMILLAN OR EQUAL
 2. ALL LVS ARE 1.5E MCMILLAN UNLESS OTHERWISE NOTED. BY TRUS-JOIST MCMILLAN OR EQUAL
 3. BUILT-UP LVLS MUST HAVE BEEN SPECIFIED AS LAMINATES OR 3" HDG MEMBERS. CONTRACTOR MAY PROVIDE AN LVL MEMBER, SCHED. HEREIN.
 4. BUILT-UP LVLS MEMBERS TO BE MAILED TOGETHER USING (2) ROWS OF 16d x 3 1/2" NAILS IN ONE FACE FOR 3/4" WIDE MEMBERS & (2) ROWS OF 16d x 3 1/2" NAILS @ EACH LVL FACE
 5. ALL STRUCTURAL LUMBER TO BE SPRUCE-PINE-FIR #2 OR BETTER, UNLESS OTHERWISE NOTED ON PLANS
 6. ALL SPECIFIED HEADER POSTS ARE JACK STUDS. CONTRACTOR SHOULD PROVIDE 2x KING STUD, AS SPECIFIED, UNLESS OTHERWISE NOTED.
 7. QUANTITY OF 2x BUILT-UP POSTS ARE NUMBERED @ EACH END OF HEADER UNLESS OTHERWISE NOTED
 8. PROVIDE & INSTALL ALL SIMPSON STRONG-TIE CONNECTORS AS RECOMMENDED BY MANUFACTURER.

HEADER DESIGNATION	HEADER SECTION	JACK STUD CONSTRUCTION	KING STUD CONSTRUCTION
HBR6	(3) 2x6 w/ 2 1/2" FLYWOOD LVS	(2) BUILT-UP 2x6	(2) BUILT-UP 2x6
HBR7	(3) 2x6 w/ 2 1/2" FLYWOOD LVS	(2) BUILT-UP 2x6	(2) BUILT-UP 2x6
HBR8	(3) 1 3/4x9 1/4" LVL	(2) BUILT-UP 2x4	(2) BUILT-UP 2x4
HBR9	(3) 1 3/4x11 1/4" LVL	(2) BUILT-UP 2x6	(2) BUILT-UP 2x6

SECOND FLOOR HEADER FRAMING

SCALE: 1/4" = 1'-0"

REVISIONS		DATE
No.	DESCRIPTION	
1	FOR CONSTRUCTION	8/11/05

PROJECT: **JARITA COURT CONDO**
 LANE AVENUE, PORTLAND
 FOR: LOU WOOD

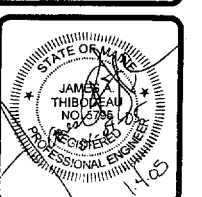
SHEET TITLE: **HEADER FRAMING PLAN**
 ISSUED FOR CONSTRUCTION

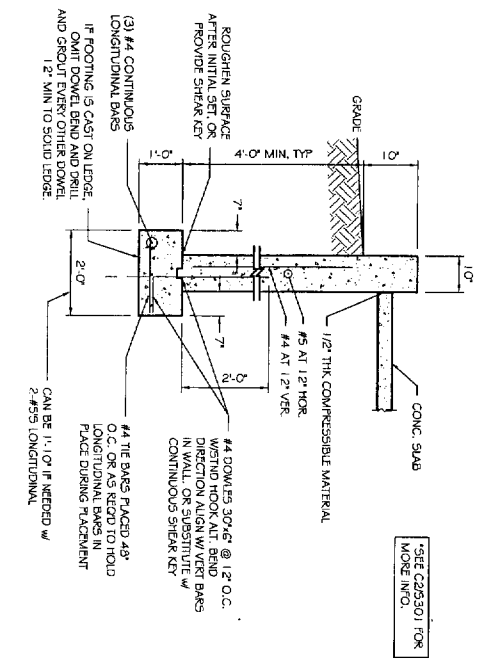
THE DESIGN, DESIGN AND SUPERVISION OF ASSOCIATED DESIGN PARTNERS INC. IS A PROFESSIONAL SERVICE. THE CONTRACTOR SHALL BE RESPONSIBLE FOR VERIFYING ALL DIMENSIONS AND CONDITIONS OF THE WORK.

ASSOCIATED DESIGN PARTNERS INC.

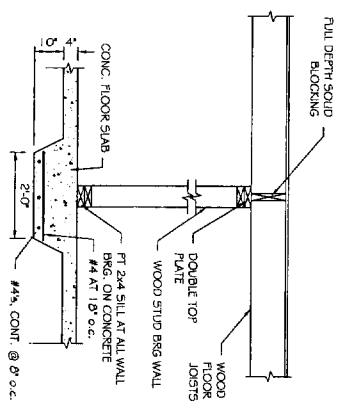
80 Leighton Road
 Falmouth, Maine 04105

Office: (207) 878-1751
 Fax: (207) 878-1788
 E-Mail: adp@adpengineering.com

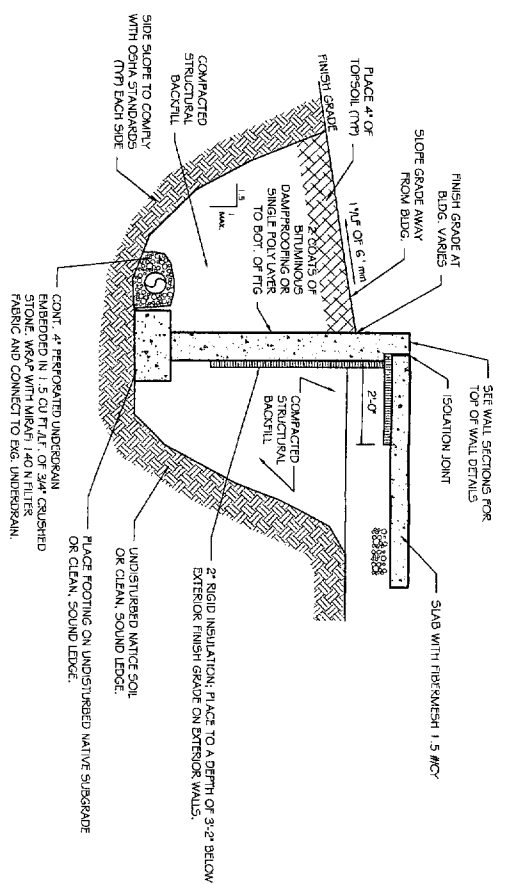




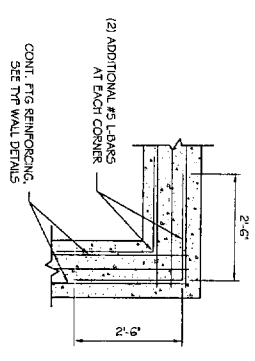
C3 TYPICAL 10" CONCRETE WALL @ GARAGE
S101 SCALE: 1/2" = 1'-0"



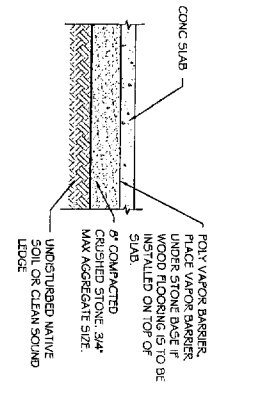
B4 THICKENED SLAB
S101 SCALE: 1/2" = 1'-0"



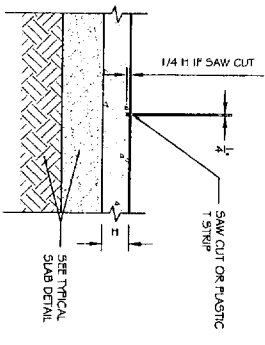
C2 TYPICAL EARTHWORK DETAIL
S101 SCALE: 1/2" = 1'-0"



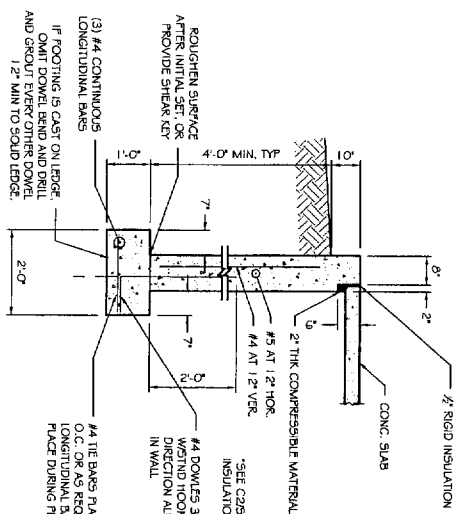
B3 CORNER REINFORCING IN FOOTING
S101 SCALE: 1/2" = 1'-0"



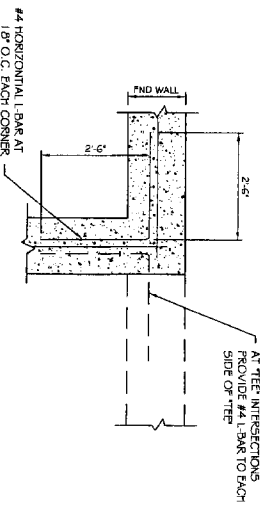
B2 TYPICAL SLAB DETAIL
S101 SCALE: 1/2" = 1'-0"



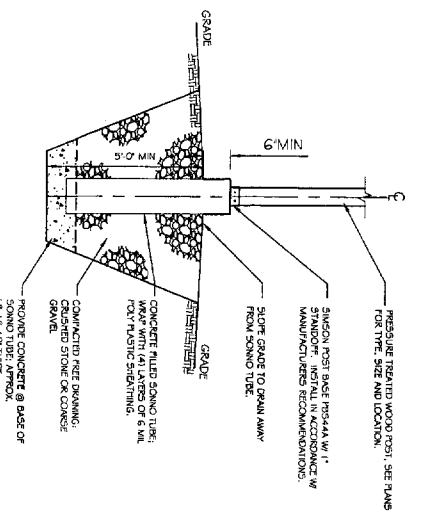
B1 TYPICAL SLAB CONTROL JOINT DETAIL
S101 SCALE: 3/4" = 1'-0"



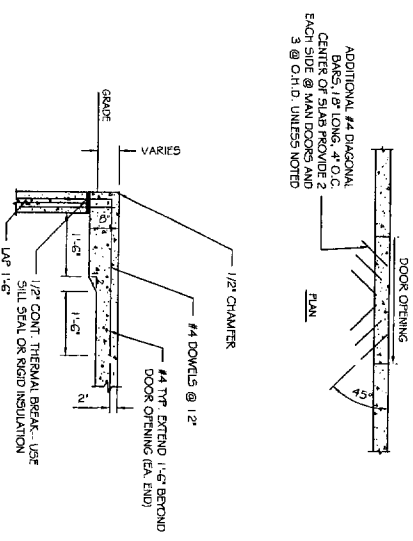
A4 TYPICAL 10" CONCRETE FOUNDATION WALL
S101 SCALE: 1/2" = 1'-0"



A3 CORNER REINFORCING IN FOUNDATION WALL
S101 SCALE: 1/2" = 1'-0"



A2 CORNER REINFORCING IN FOUNDATION WALL
S101 SCALE: 1/2" = 1'-0"



A1 TYPICAL SLAB DETAILS @ DOOR OPENINGS
S101 SCALE: 1/2" = 1'-0"

REVISIONS		DATE
No.	BY	DESCRIPTION
1	JHT	FOR CONSTRUCTION
2		
3		
4		

PROJECT: **JARITA COURT CONDO**
LANE AVENUE, PORTLAND
 FOR: LOU WOOD

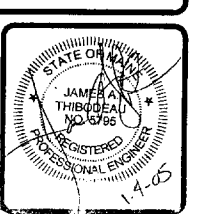
SHEET TITLE:
FOUNDATION DETAILS
ISSUED FOR CONSTRUCTION

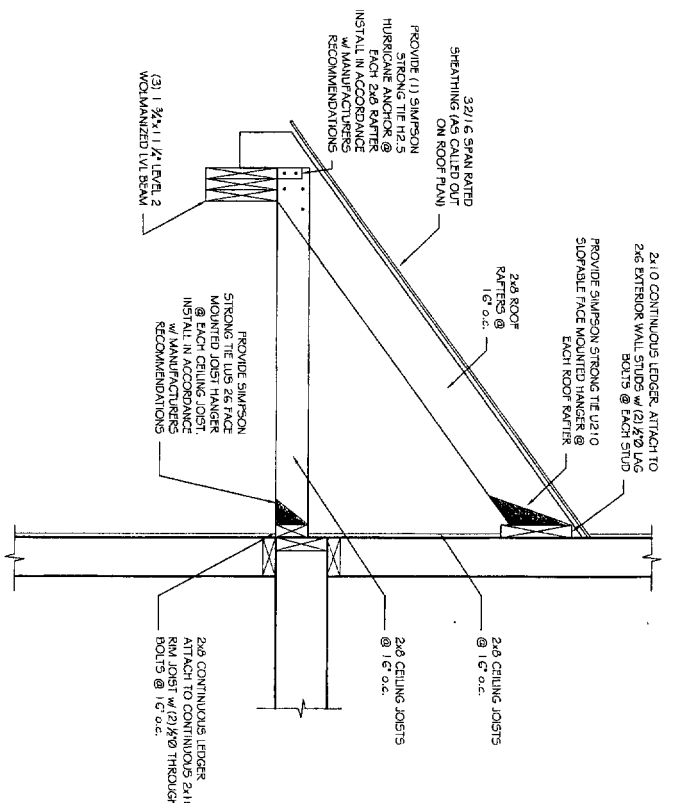
THIS DOCUMENT IS THE PROPERTY OF ASSOCIATED DESIGN PARTNERS, INC. AND IS NOT TO BE REPRODUCED OR TRANSMITTED IN ANY FORM OR BY ANY MEANS, ELECTRONIC OR MECHANICAL, WITHOUT THE WRITTEN CONSENT OF ASSOCIATED DESIGN PARTNERS, INC.

ASSOCIATED DESIGN PARTNERS INC.

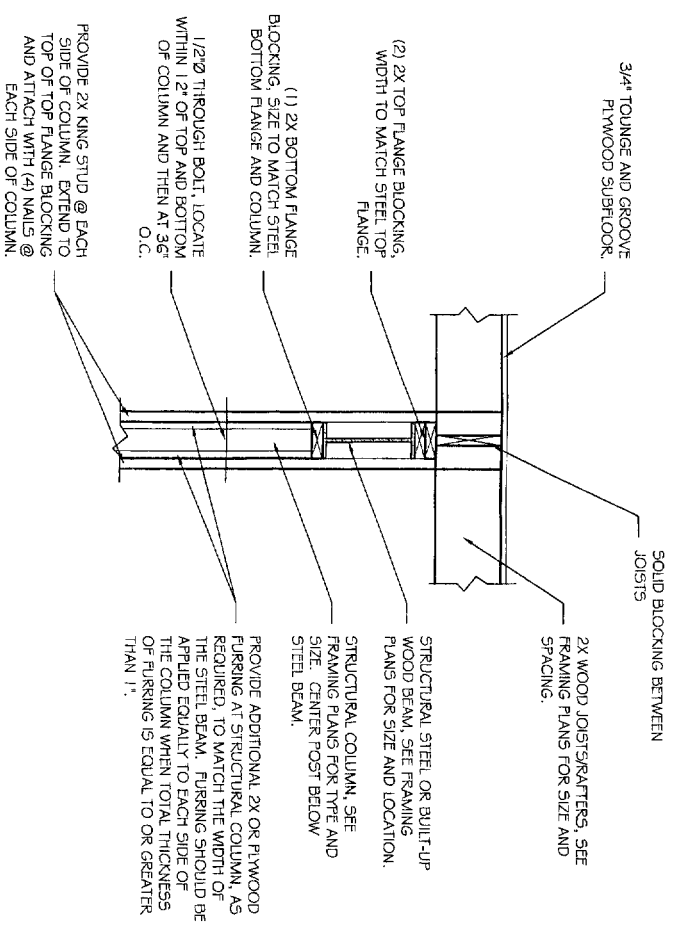
80 Leighton Road
 Falmouth, Maine 04105

Office: (207) 878-1751
 Fax: (207) 878-1788
 E-Mail: adp@adpengineering.com

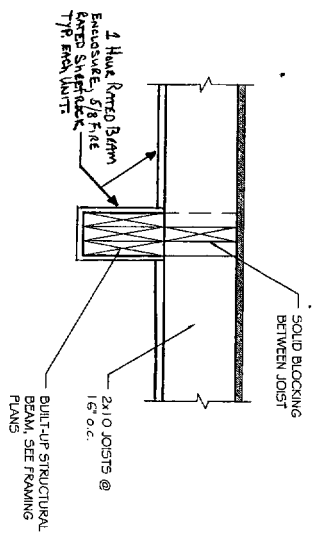




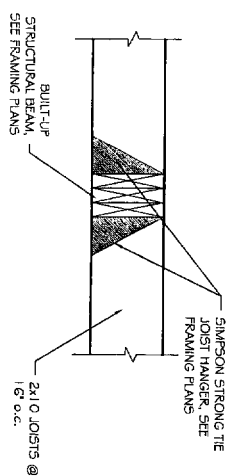
B4 SECTION THROUGH BACK PORCH
SCALE: NTS



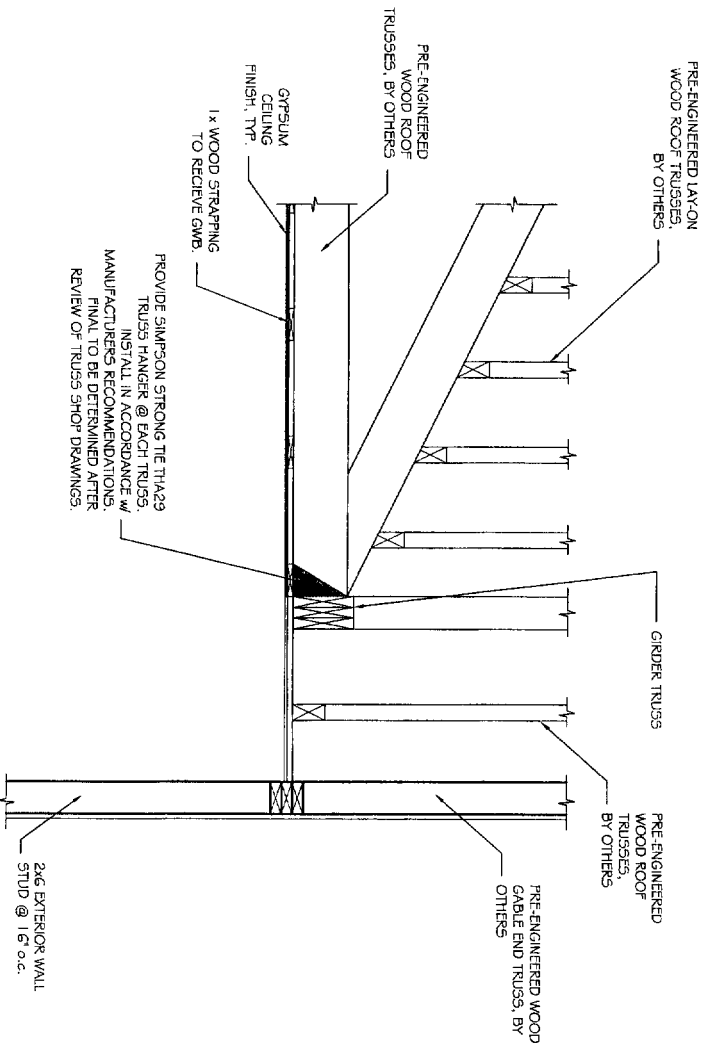
B3 STL BEAM FRAMING @ COLUMNS
SCALE: NTS



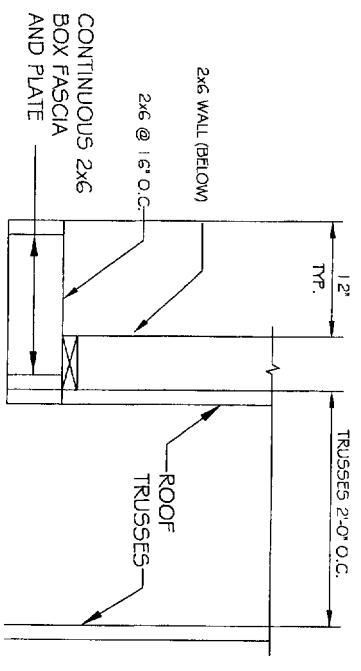
B1 SECTION THROUGH OVER FRAMED BEAM
SCALE: NTS



B2 SECTION THROUGH FLUSH BEAM
SCALE: NTS



A3 SECTION THROUGH ROOF AT REAR
SCALE: NTS



A1 RAKE FRAMING SECTION
SCALE: NTS

REVISIONS		
No.	BY	DESCRIPTION
1	SHS	FOR CONSTRUCTION
2		
3		
4		

PROJECT: **JARITA COURT CONDO**
LANE AVENUE, PORTLAND
FOR: LOU WOOD

SHEET TITLE: **FRAMING DETAILS**
ISSUED FOR CONSTRUCTION

THESE DRAWINGS, SPECIFICATIONS, AND CONDITIONS ARE THE PROPERTY OF ASSOCIATED DESIGN PARTNERS, INC. NO PART OF THIS DOCUMENT SHALL BE REPRODUCED OR TRANSMITTED IN ANY FORM OR BY ANY MEANS, ELECTRONIC OR MECHANICAL, WITHOUT CONSENT OR PERMISSION.

ASSOCIATED DESIGN PARTNERS INC.

80 Leighton Road
Falmouth, Maine 04105

Office: (207) 878-1751
Fax: (207) 878-1788
E-Mail: adp@acpengineering.com

